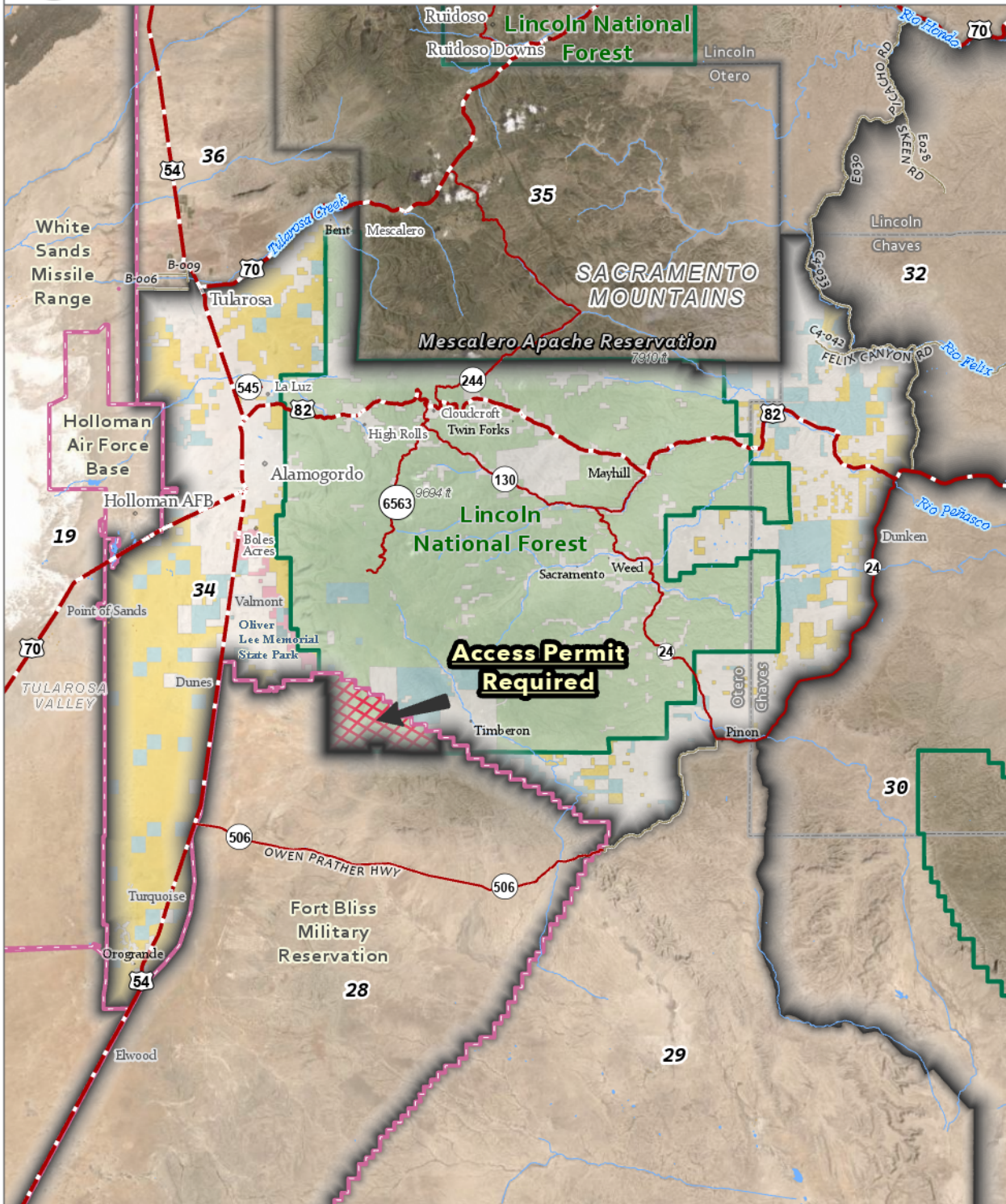
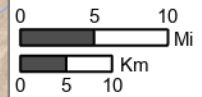




# Game Management Unit 34



- Game Management Unit
- ACCESS PERMIT REQUIRED
- Bureau of Land Management
- Dept. of Defense
- Forest Service
- Private
- State
- State Park
- Tribal
- Military Facility
- State Boundaries
- County
- US Highway
- State Highway
- Local Road



Scale: 1:825,000

**GMU 34:** Beginning at the junction of Tulie Gate road (Otero CR B-006) and the east boundary of the White Sands missile range at Tularosa gate and running east along Tulie Gate road to its junction with Railroad avenue (Otero CR B-009), then north on Railroad avenue to its intersection with US 54, then running south along US 54 to its intersection with US 70 at Tularosa, then running northeast along US 70 to its intersection with the west boundary of the Mescalero Apache Tribe reservation, then south along the west boundary of the reservation, east along its south boundary, and north along its east boundary to the Lincoln-Chaves county line, then east along the county line approximately two miles to its intersection with Picacho road, then southerly along Picacho road to its intersection with Felix Canyon road, then east along Felix Canyon road to its intersection with Picacho road, then south along Picacho road to its intersection with US 82, then west along US 82 to its junction with NM 24 north of Dunken, then south along Pinon Dunken road (NM 24) to its intersection with Owen Prather highway (NM 506) at Pinon, then west, south and west on Owen Prather highway (NM 506) to the east boundary of the Fort Bliss military reservation, then north and west along the boundary of the Fort Bliss-McGregor Range Camp military reservation to its intersection with the Sacramento division of the Lincoln national forest, then west and north along the boundary of the Sacramento division of the Lincoln national forest to its intersection with the north boundary of the Fort Bliss-McGregor Range Camp military reservation, then west and south along the boundary of the Fort Bliss-McGregor Range Camp military reservation to its junction with the east boundary of the Fort Bliss-Dona Ana Range Camp at US 54 south of Orogrande, then north along the east boundary of Fort Bliss-Dona Ana Range Camp, then north along the east boundary of White Sands missile range to Holloman Air Force base, then east and north along the eastern Holloman Air Force base boundary to the east boundary of White Sands missile range, then north along the east boundary of White Sands missile range to its intersection of Tulie Gate road (Otero CR B-006) at Tularosa gate.

**BLM Maps:** Alamogordo and Ruidoso Quadrangles.  
**US Forest Service Maps:** Lincoln National Forest, Sacramento Ranger District.