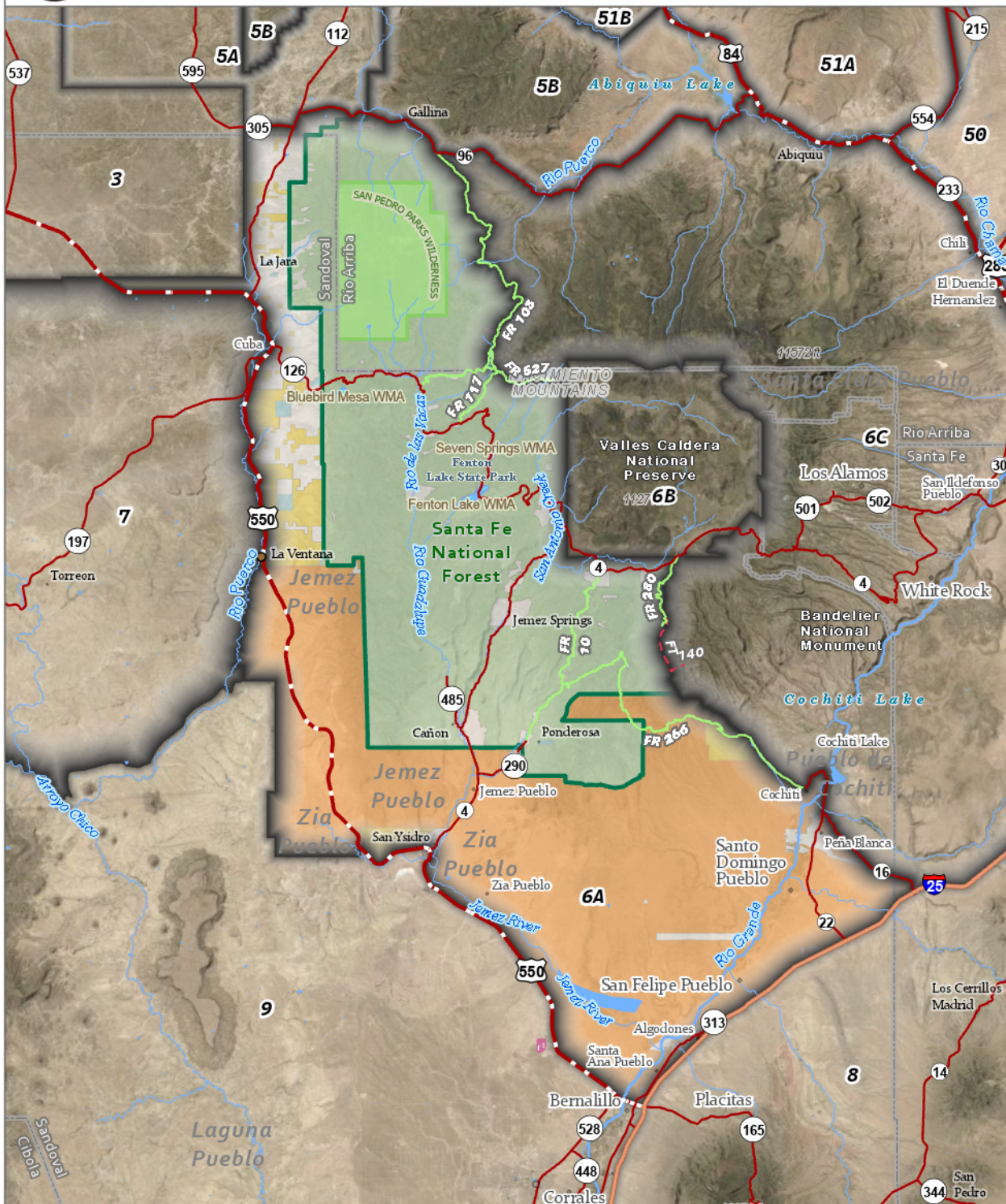
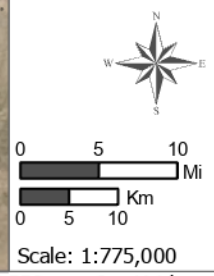




# Game Management Unit 6A



- Game Management Unit
- Wildlife Management Area
- Bureau of Land Management
- Forest Service
- National Park Service
- Other Federal Agency
- Private
- State
- State Game & Fish
- State Park
- Tribal
- USFS Wilderness
- BLM Wilderness
- County
- Interstate
- US Highway
- State Highway
- USFS Road
- Non-mechanized trail



**GMU 6A:** That portion of GMU 6 starting at the junction of I-25 and US 550 at Bernalillo and running northwest and west along US 550 past San Ysidro to its intersection with the boundary of the Pueblo of Zia reservation, then south, west and north along the Pueblo of Zia reservation boundary to the Pueblo of Jemez reservation, then west, north and east along Pueblo of Jemez reservation boundary to its intersection with US 550 near La Ventana, then north and west along US 550 to its intersection with the south boundary of the Jicarilla Apache Nation reservation, then east along the south boundary of the Jicarilla Apache Nation reservation and north along its east boundary to its intersection with NM 595, then east along NM 595 to its junction with NM 96, then east along NM 96 to its junction with Santa Fe FR 103, then south along Santa Fe FR 103 to its junction with Santa Fe FR 117, then south along Santa Fe FR 117 to its junction with Santa Fe FR 527 (Pipeline road), then east along Santa Fe FR 527 to its junction with the west boundary of the Valles Caldera national preserve, then south and east along the boundary of the Valles Caldera national preserve to its junction with Santa Fe FR 280 and NM 4, then south along Santa Fe FR 280 to its junction with Santa Fe FT 140, then south along Santa Fe FT 140 to Peralta creek, then south and east along Peralta creek to its junction with Santa Fe FR 266, then south and east along Santa Fe FR 266 to its junction with NM 22, then along NM 22 to its junction with NM 16, then southeast along NM 16 to its junction with I-25, then south and west along I-25 to its junction with US 550 at Bernalillo.