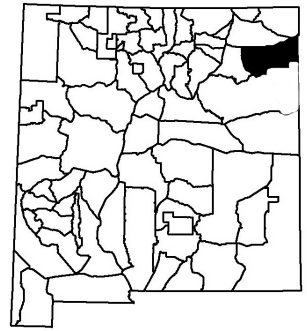




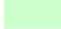


Providing New Mexico  
and its wildlife

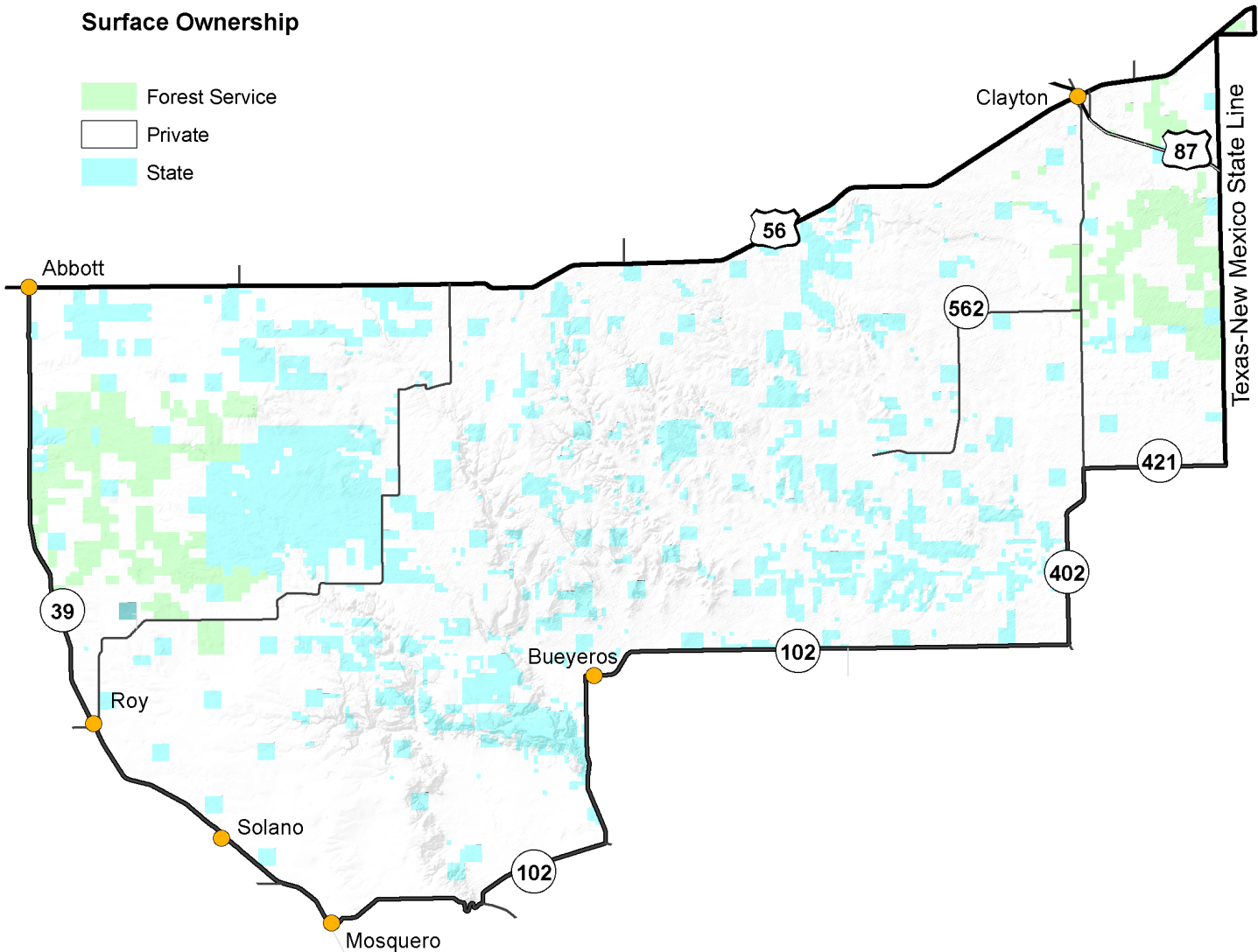
**Year-round  
Excellent  
Services**

# Game Management Unit 59



## New Mexico Surface Ownership

-  Forest Service
-  Private
-  State



**GMU 59:** Beginning at the intersection of NM 39 and US 56 at Abbott, then east along US 56 to the New Mexico-Texas state line, then south along the New Mexico-Texas state line to NM 421 east of Sedan, then west along NM 421 to its intersection with NM 402 north of Stead, then south along NM 402 to its intersection with NM 102 north of Amistad, then west, south, and west along NM 102 to its intersection with NM 39 east of Mosquero, then north along NM 39 to its intersection with US 56 at Abbott.

### Maps for GMU 56

**BLM Maps:** Capulin Mountain Quad, Clayton Quad, Raton Quad, and Springer Quad.

**US Forest Service Maps:** Cibola National Forest, Kiowa Grasslands.

These and other maps may be found at NM Public Lands Information Center, (877) 851-8946, or visit <http://plicmapcenter.org/NM/>.