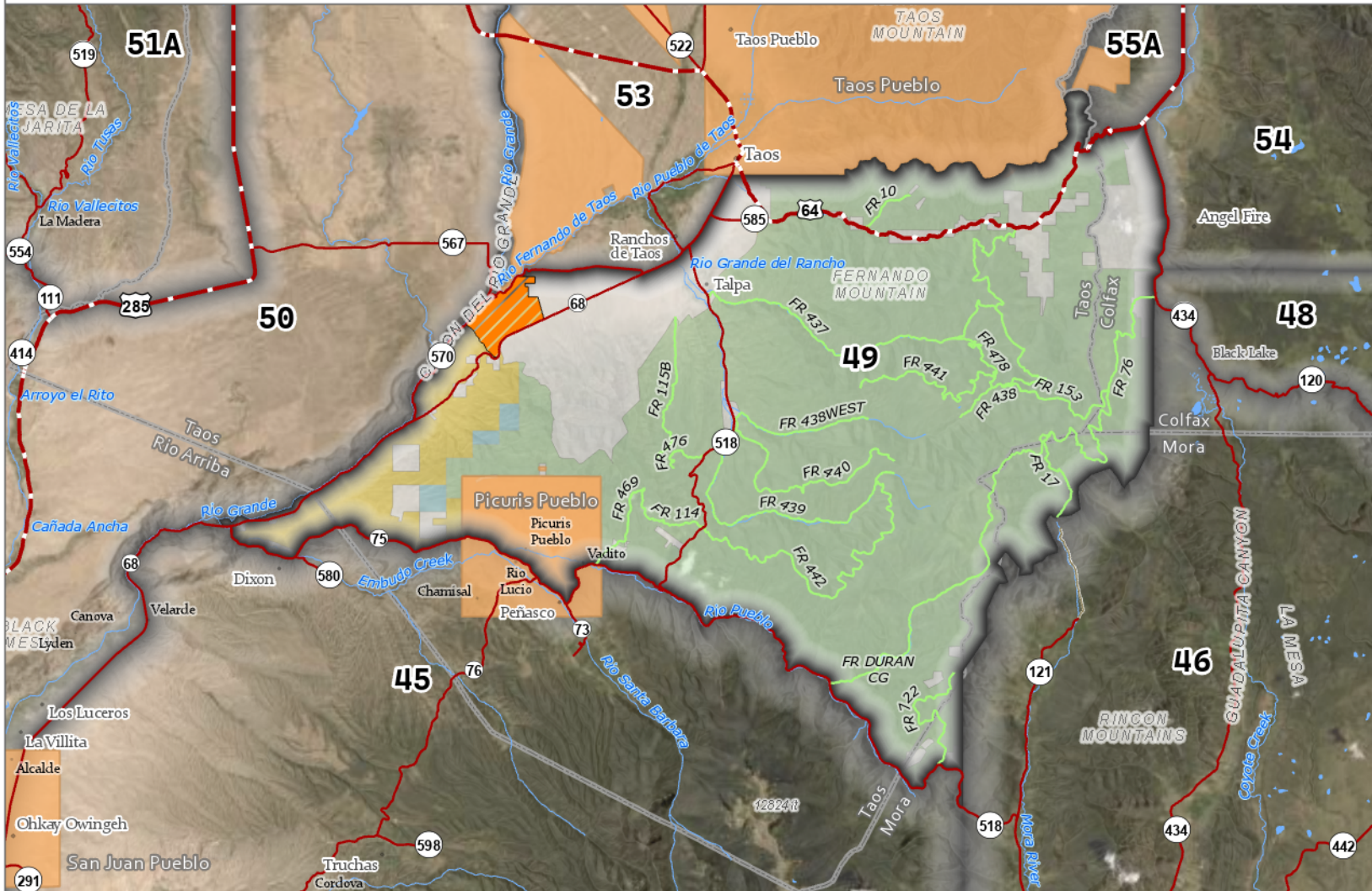
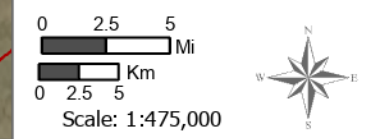




# Game Management Unit 49



- Game Management Unit
- CLOSED TO HUNTING
- Bureau of Land Management
- Forest Service
- Private
- State Land Office
- Tribal
- NM Counties
- US Highway
- State Highway
- USFS Road



**GMU 49:** Beginning on the Rio Grande at Embudo Creek and running north along the Rio Grande to its intersection with NM 567 at Taos Junction Bridge, then east on NM 567 to NM 570, then northeast on NM 570 to its junction with NM 68 immediately south of Ranchos de Taos, then north along NM 68 to the south boundary of the Taos Pueblo lands, then east along the pueblo's south boundary to the Taos County line, then south along the Taos County line to its intersection with US 64, then east along US 64 to its junction with NM 434 north of Black Lake, then south along NM 434 to the Carson National Forest boundary at forest road 76, then south along Carson National Forest boundary to intersection of NM 518 at Holman hill, then westerly along NM 518 to its junction with NM 75, then west along NM 75 to NM 68, then south on NM 68 to Embudo Creek; and west on Embudo Creek to the Rio Grande.