

# **Proposed Amendments to (19.31.12 NMAC) Ibex and Barbary Sheep Management**

**August 22, 2013**

**New Mexico State Game Commission Meeting  
Grants, NM**



## **Ibex Amendments 19.31.12.10 and 19.31.12.13**

### **Department Recommended Option**

- Eliminate over-the-counter nannie hunt**
- Create population management hunts (similar to other big game species)**
- Keep the incentive billy draw for those hunters successful in killing two nannies during population management hunts**



# **Ibex Amendments**

## **19.31.12.10 and 19.31.12.13**

### **Other Options**

- **Web Sale**
- **Set number of licenses and hunts**





# Barbary Sheep Amendments

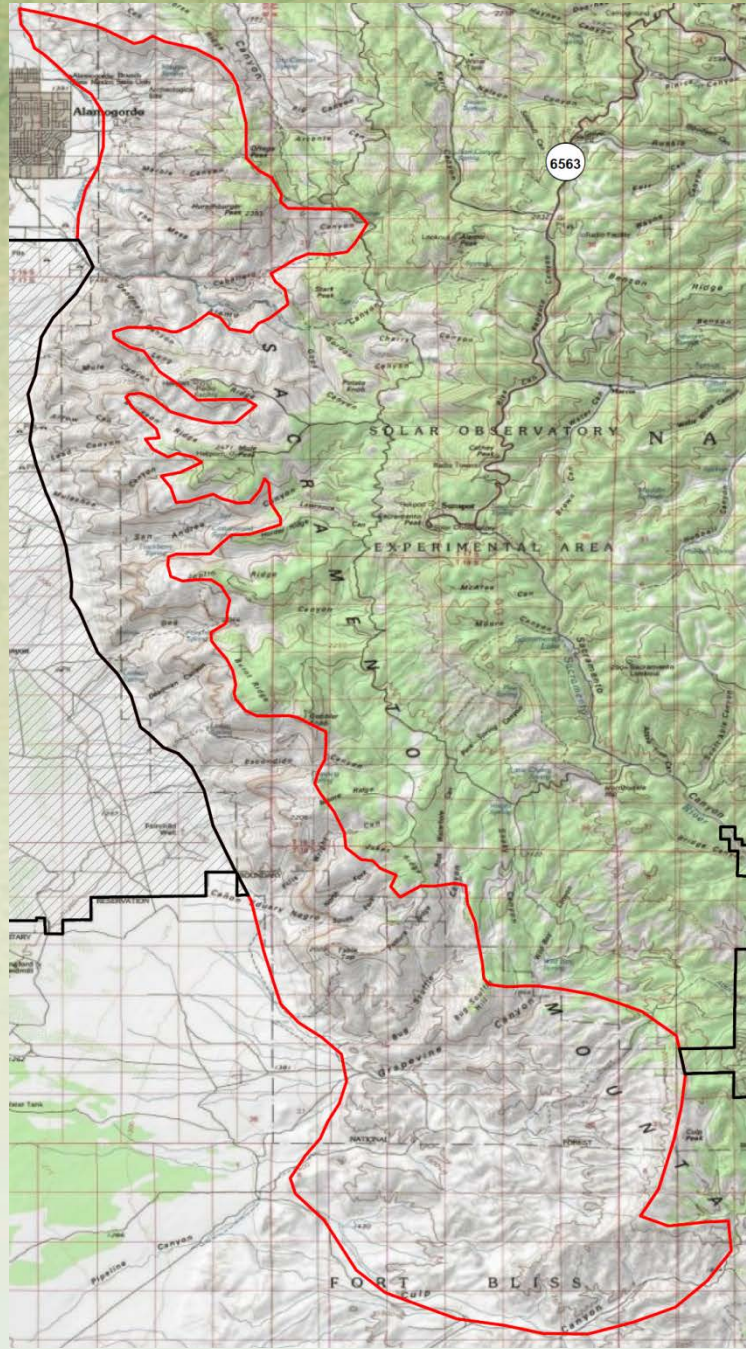
19.31.12.11

- Amend Barbary Sheep rule to allow portions of GMU 34 be valid for over-the-counter licenses
- This amendment is aimed at reducing the Barbary Sheep population in the proposed Desert Bighorn reintroduction area



***Questions?***





*Wildlife Management Division*



# Ibex Surveys

- Aerial Survey flown on March 19, 2013
  - 759 ibex observed (702 in 2012 survey)
  - 102 “white billies” observed (130 in 2012)
- Ground Survey conducted on Aug 14, 2013
  - 494 Ibex observed (~20% of mountain covered)
  - Kid:Female ratio ~80:100
  - Male:Female ratio ~110:100
- Assumption is that ~350 kids were born this season and based upon natural mortality and wounding loss, harvest (reduced to possession) needs to be ~340 animals to start reducing the population.