



State Game Commission

Habitat Stamp Program Procedures

Agenda Item 9B

June 9, 2011

by

**Dale Hall, Habitat Stamp Program Manager
NM Dept. Game and Fish**

What is the Habitat Stamp Program?

- A habitat management process authorized under the federal *Sikes Act*,
- A funding vehicle for wildlife habitat work,
- A forum for inter-agency coordination and collaboration, and
- An agency AND citizen partnership





HSP Partners





Tri-Agency HSP Review

Identified main issues/problems

1. Maintenance
2. Enclosure Vandalism
3. Asset Inventory
4. Varying Agency Values
5. Citizen Participation
6. Formula Constraints
7. Billings



Commission Appoints Citizen Advisors

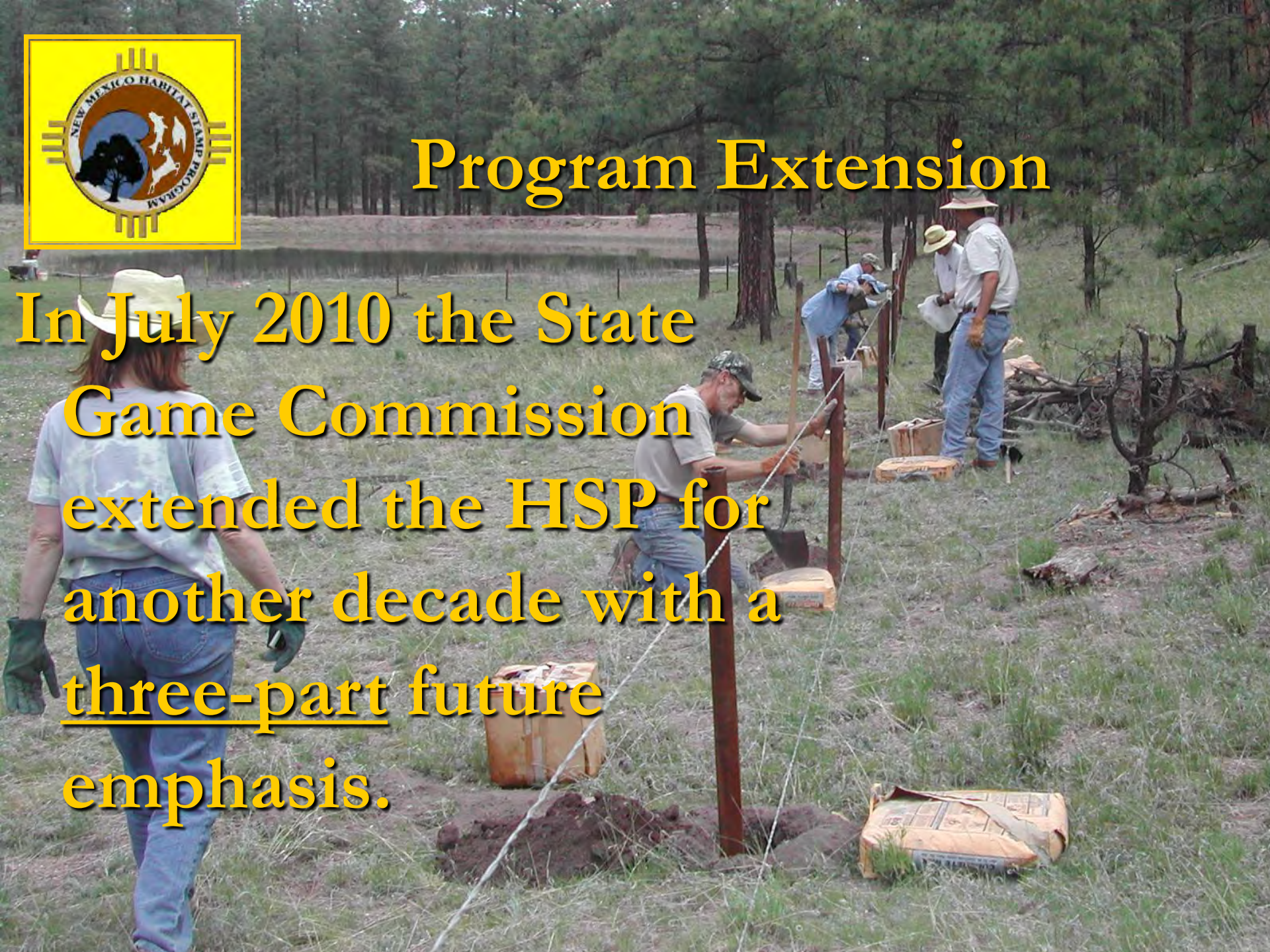
- 35 citizens representing
 - Sportsmen
 - Fed land permittees
 - Environmentalists
- Regional outlook
- Rank proposal and recommend back to Commission





Program Extension

In July 2010 the State Game Commission extended the HSP for another decade with a three-part future emphasis.





Emphasis for Future

#1.--Maintain Current Structures



Emphasis for Future #2--More Fisheries/Aquatics Projects



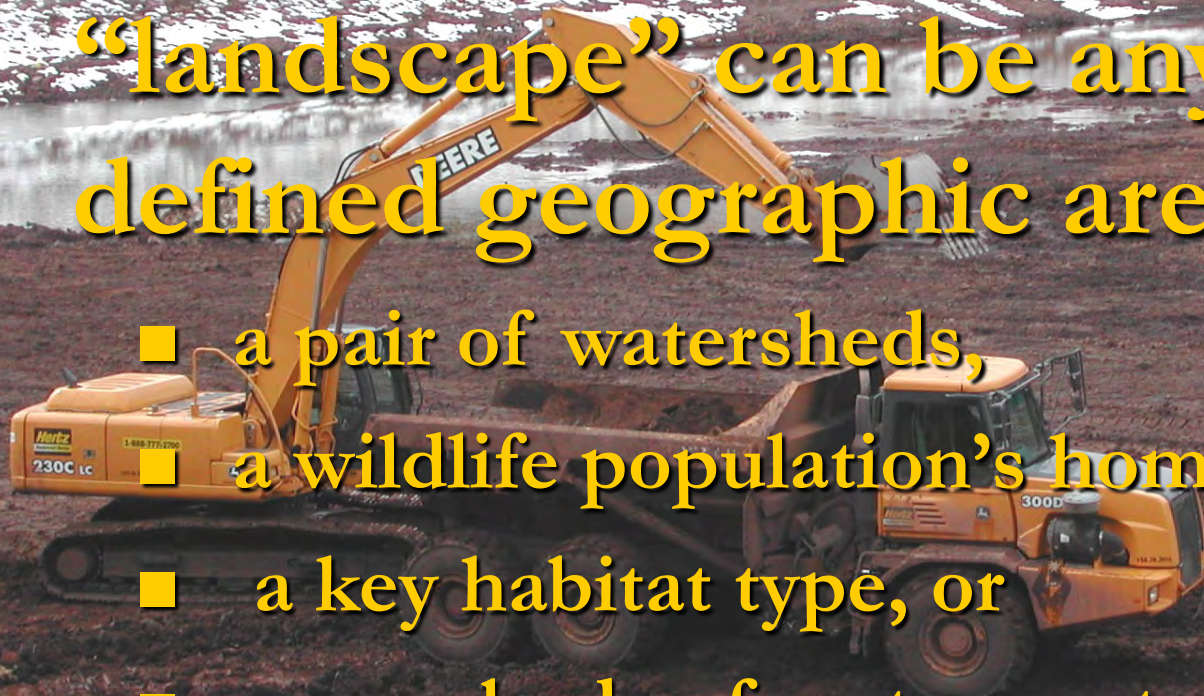
Emphasis for Future

#3.--Citizen Involvement in a Landscape Approach

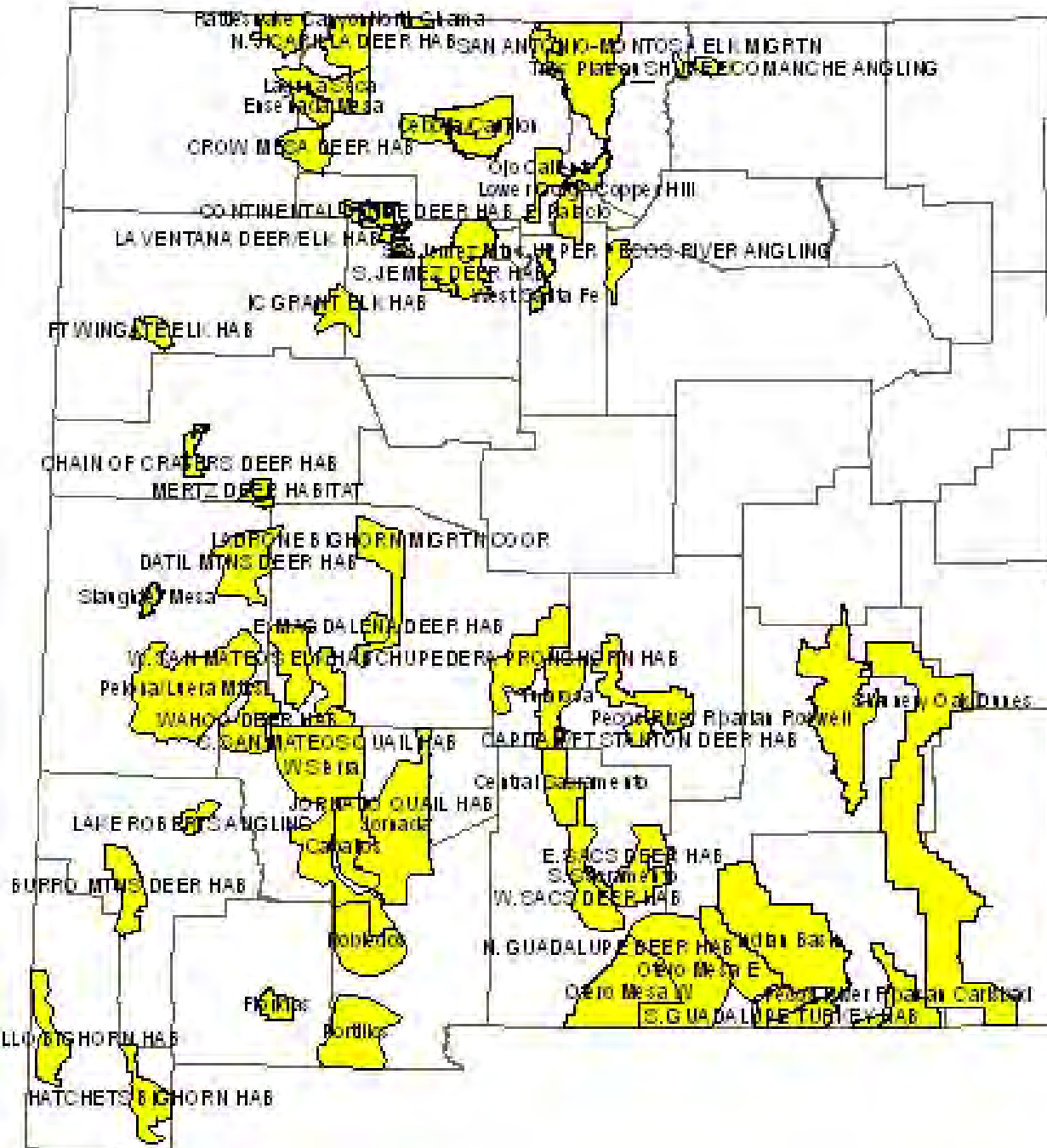
What is a “Landscape”

For planning purposes a
“landscape” can be any clearly
defined geographic area.

- a pair of watersheds,
- a wildlife population’s home range,
- a key habitat type, or
- even a body of water or stretch of stream
- Etc.



HSP Landscapes



What is a “Landscape Plan”

1. Defined geographic area as mentioned previously
2. Spatially displays past habitat improvements
3. Spatially displays future habitat proposals in next 3 years
4. Ties project proposals back to agency plans for goals and objectives



Why “Landscapes”

- Show public “whole story”
- Do larger, more impactful projects
- Complications arise and dense funds are needed to do aquatic landscapes
- Some Fed units not ready for work
- Attract more partners/funds
- Incorporate limited G&F personnel in planning

Public Involvement Process

- Citizens identified alternatives April 2010
- Public review of draft alternatives Fall 2010
 - 5 public meetings, emails, and web post
- Executive Committee compiled all comments
- Tri-agency leadership reviewed public preferences
- Updated SGC on Dec 9th. 2010
- Agencies draft more specific recommendations for review by 5 CACs in spring 2011
- Update SGC in summer 2011



Delegates Convene

1/3 of funds set aside for LSs

1 delegate from each of 5 regions

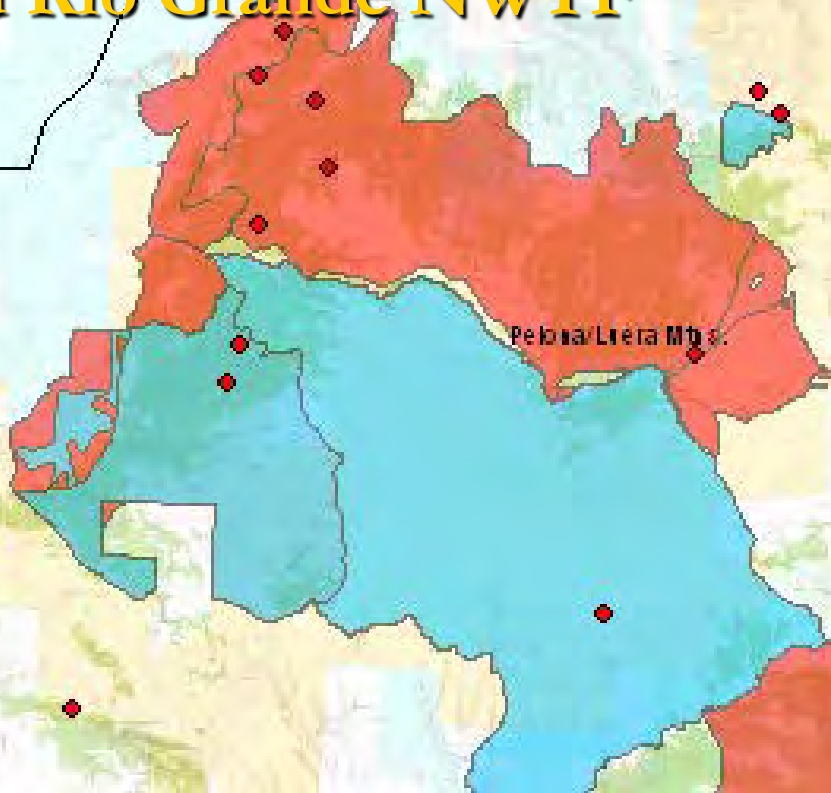
23 landscapes nominated

\$250,000 to allocate

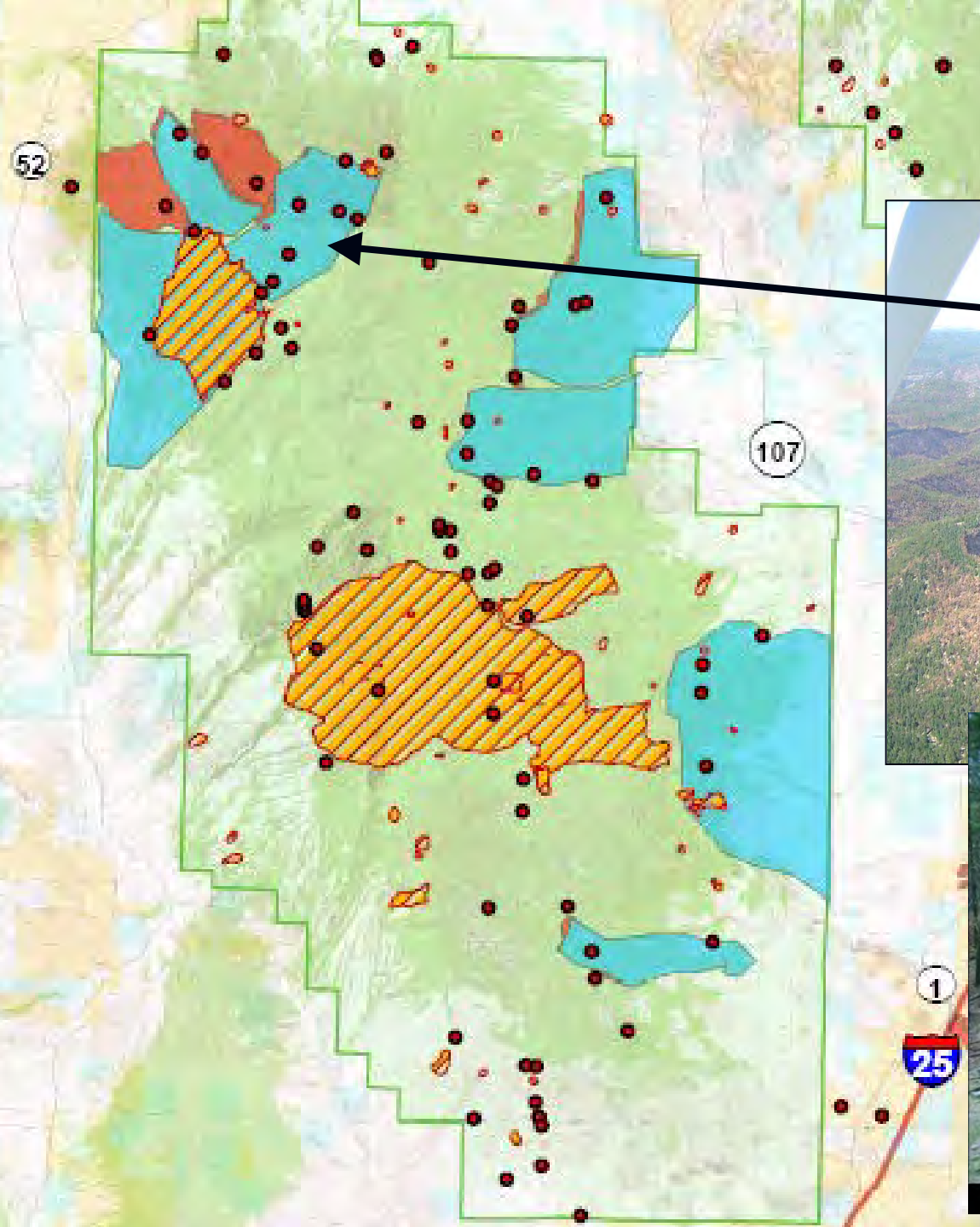


Pelona/Luera LS

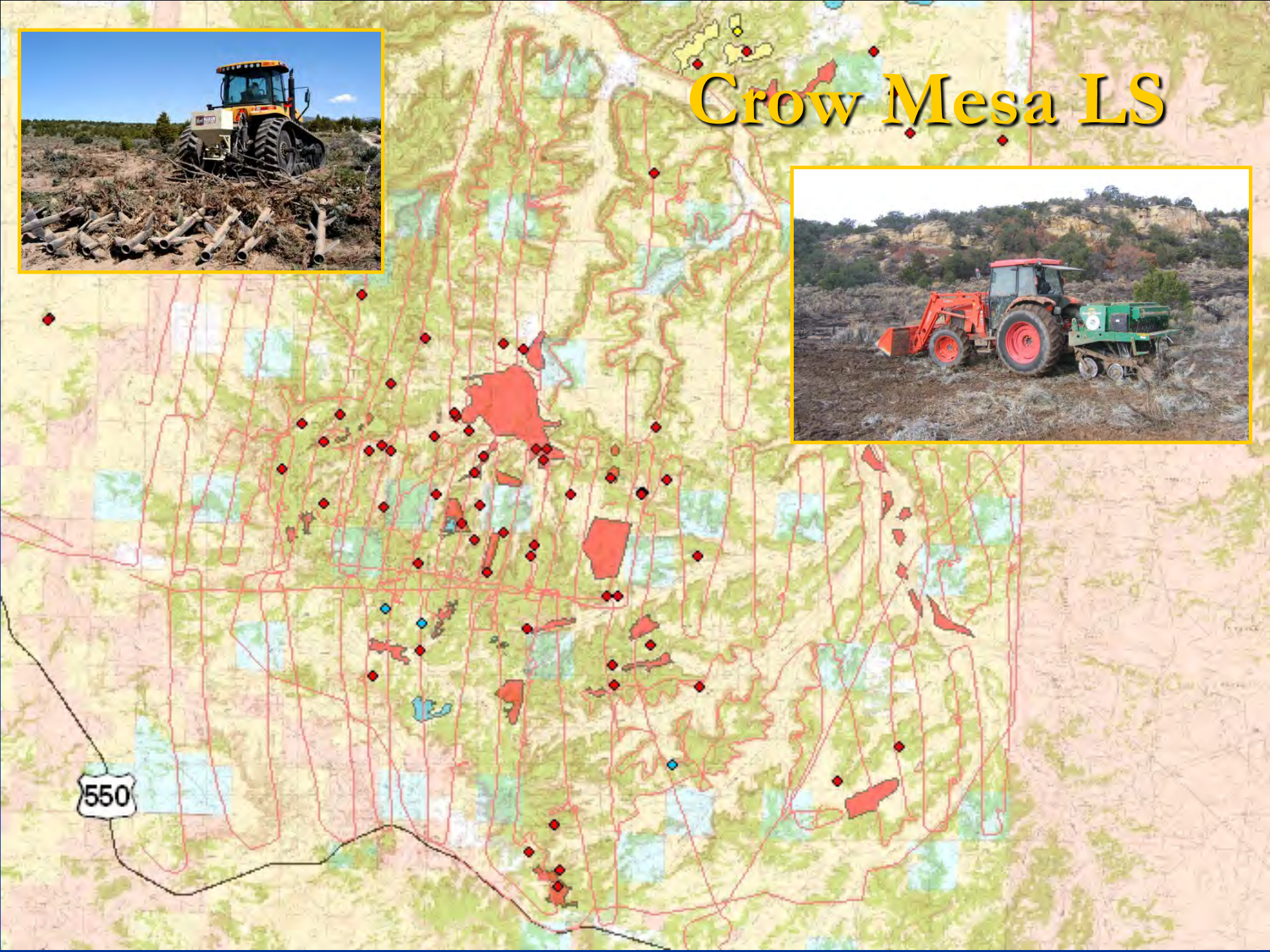
- Treat 180,000 acres in 3 years
- G&F contributed \$190,000
- Matched by another \$435,000
- SLO; L/Os; State Forestry; SWCD; BLM; Mid Rio Grande NWTF



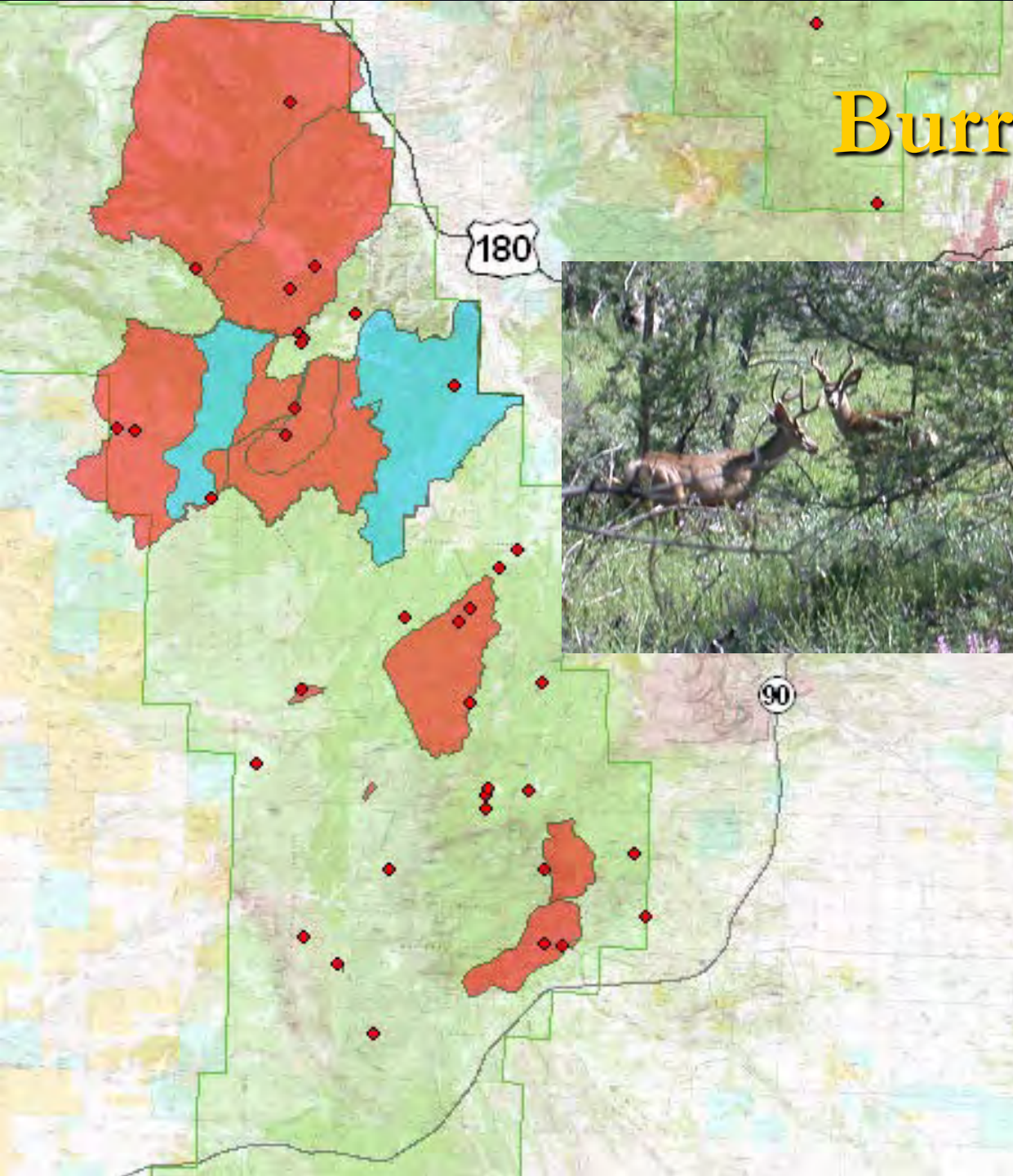
San Mateo LS



Crow Mesa LS



Burro Mtns. LS



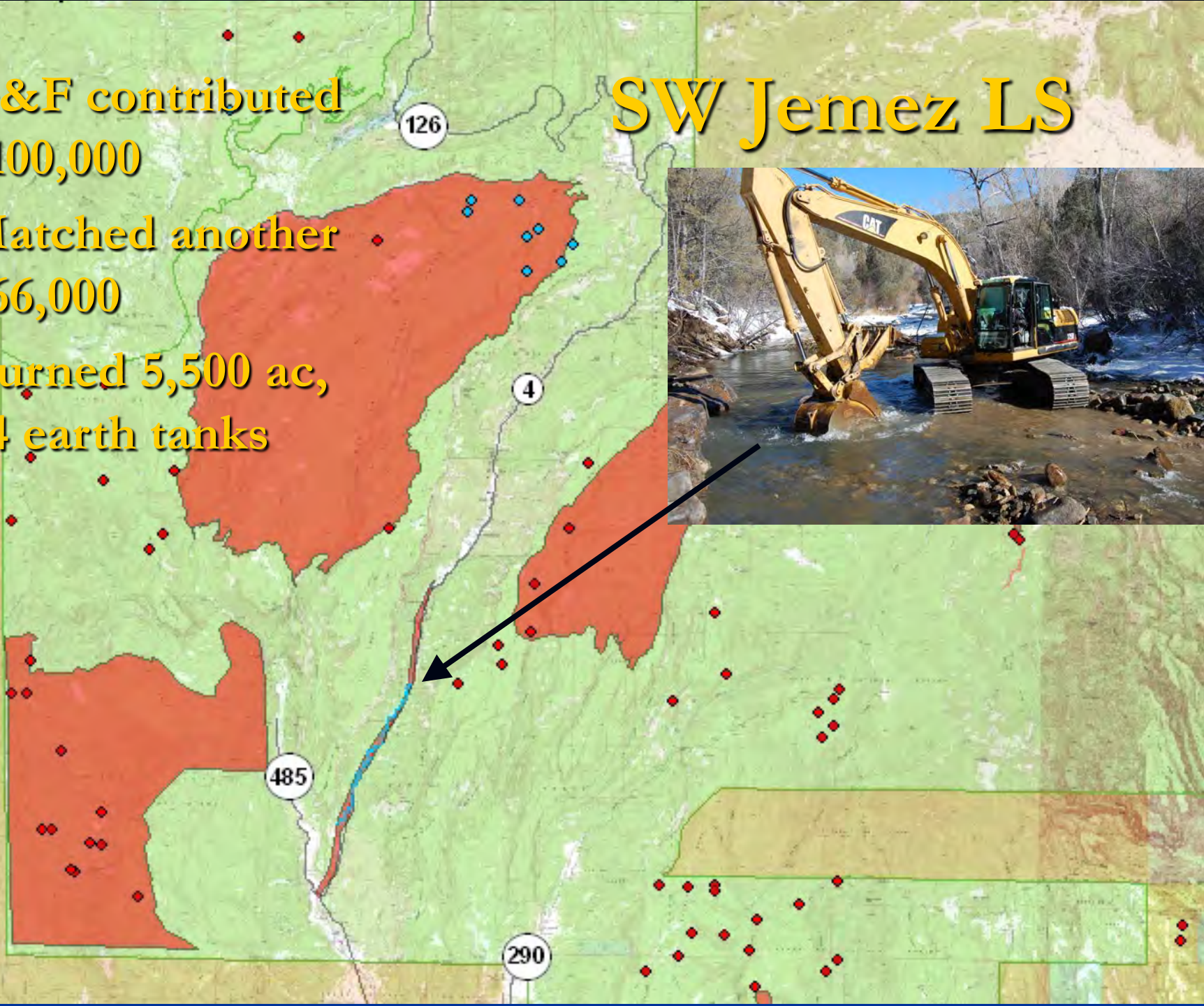
- SWCD; L/Os; Env. Dep.; NGOs
- G&F contributed \$300,000
- Matched another \$640,000
- Burned 50,000 ac, 200 erosion structures; and 15 water developments

- G&F contributed \$100,000

- Matched another \$66,000

- Burned 5,500 ac,
24 earth tanks

SW Jemez LS

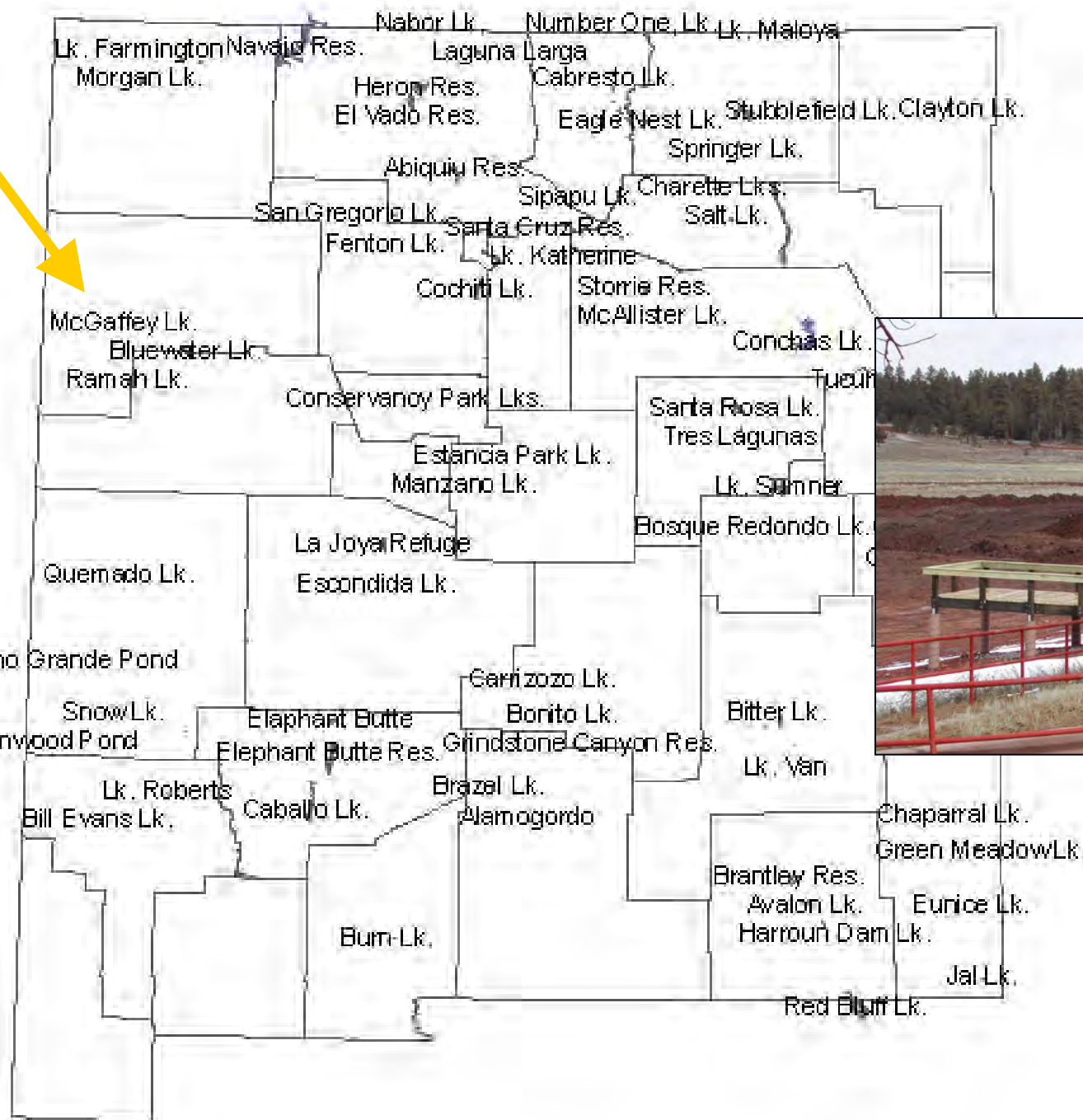


Ladrone Pk. LS

- G&F contributed \$300,000
- Matched another \$300,000 by BLM
- Treated 6,000 ac in pattern, 200 erosion structures; and 1 water development, 10 springs



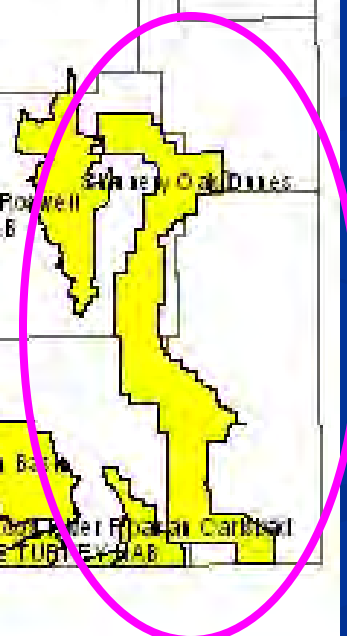
Lakes of NM



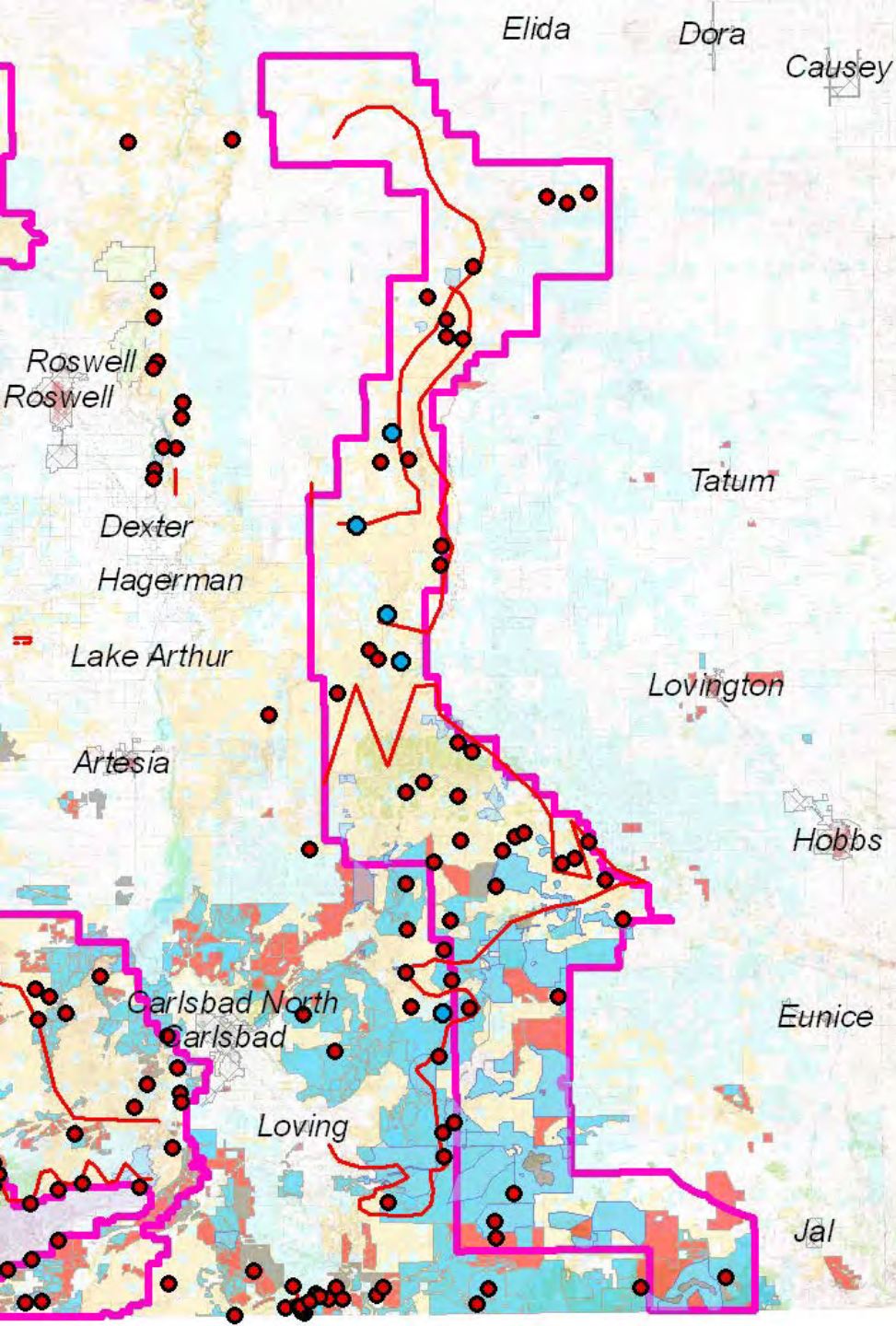
G&F
contributed
\$130,000



1 landscape plan selected



Shinnery Oak Dunes LS



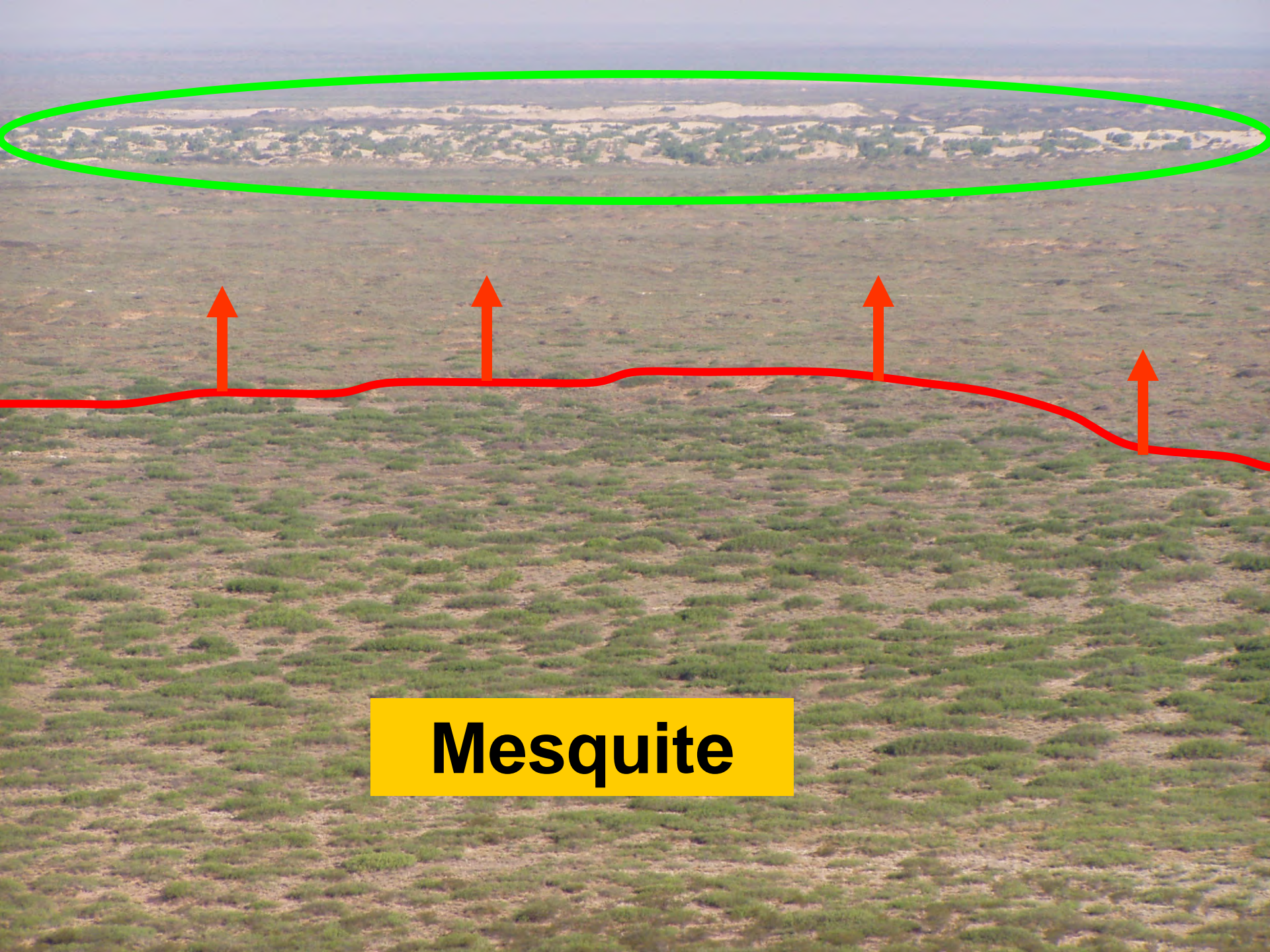


Habitat Restoration is Key to Success...



RED LAKE 08Dec2006 07:32AM





Mesquite



We seek your....

Direction on future process

