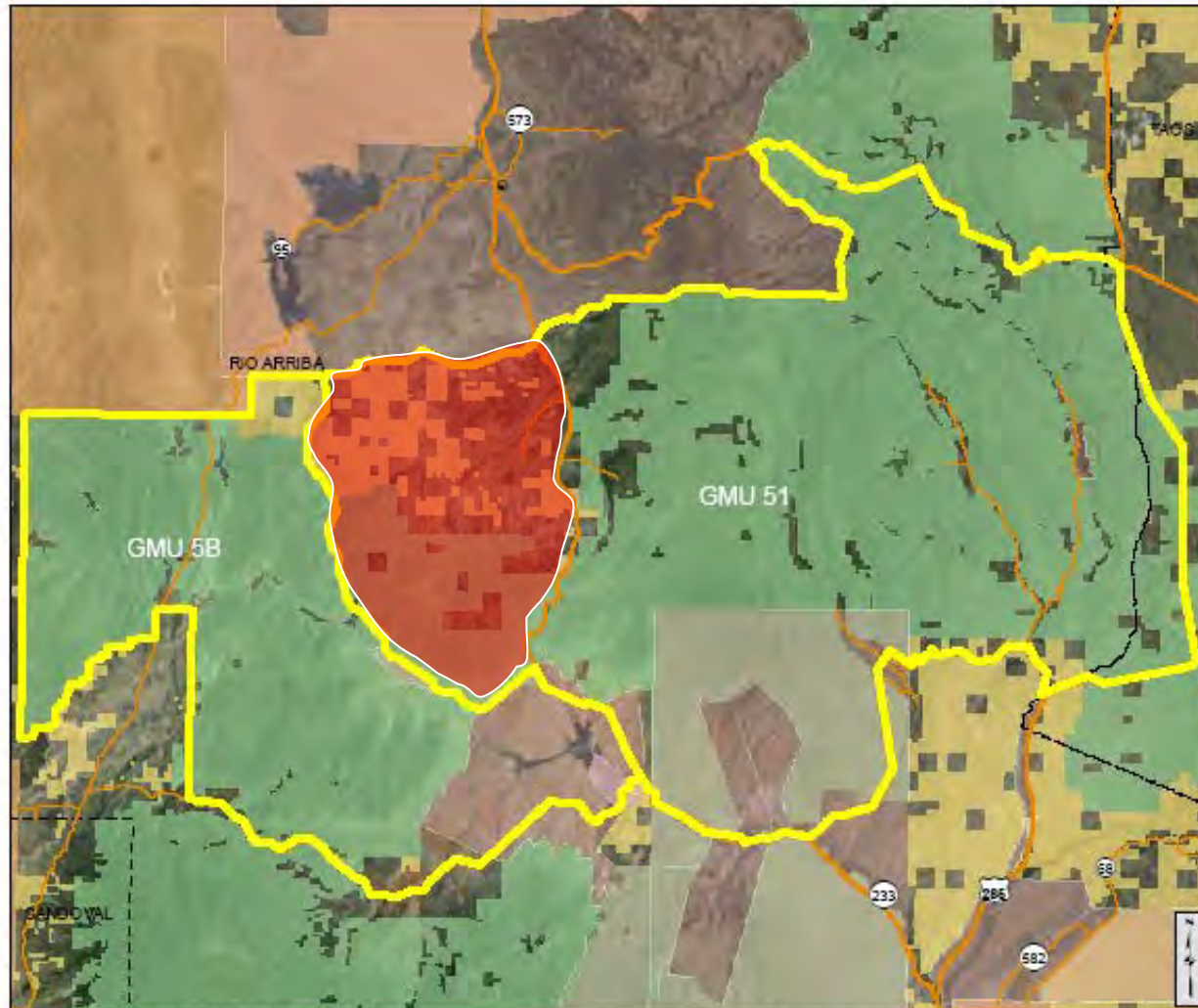


Deer Management Unit 5B and 51





Cartographic Features

- City, Town or Village
- County Seat
- - - County Boundary
- ▲ SLO District Office
- SLO District Boundary
- Land Grant
- Interstate Highway
- US Highway
- NM Highway
- Local Road or Street

Federal Surface Management

- Bureau of Land Management
- Bureau of Reclamation
- Department of Agriculture
- Department of Defense
- Department of Energy
- USDA Forest Service
- Fish and Wildlife Service
- Bureau Indian Affairs
- National Park Service
- Wilder Calder National Preserve

State Trust Lands

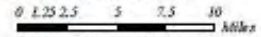
- Surface Estate
- Subsurface Estate
- Surface and Subsurface Estate

Lease Types

- Oil and Gas Lease
- Agricultural Lease
- Commercial Lease
- Mineral Lease

New Mexico State Land Office

Trust Land Status

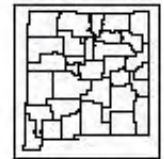


Universal Transverse Mercator Projection, Zone 13
1983 North American Datum

The New Mexico State Land Office assumes no responsibility or liability for, or in connection with, the accuracy, reliability or use of the information provided here, in State Land Office data layers or any other data layer.

Land Office Geographic Information Center
logis@slo.state.nm.us

Created On: 11/8/2009 10:12:19 AM



www.nmstatelands.org

Purpose for Boundary Change

- ▶ Wildlife management objectives for the area between US 84 and the Chama River are more closely associated to Unit 51 than Unit 5B.
 - Winter range for elk and deer from areas of Unit 51.
 - Chama River is a natural barrier that limits elk and deer movement from Unit 5B.

Issues and Concerns

- ▶ Boundary change will have a negative impact to deer in the portion of Unit 5B that is now included in Unit 51.
- ▶ The Deer hunt in Unit 51 is running concurrent with an Elk hunt.
- ▶ The current deer hunts coincided with deer starting to move onto the winter range.
- ▶ Law Enforcement Presence.

2007 Deer Population Reconstruction Summary

GMU 5B

- ▶ No. Animals Observed
 - 134
- ▶ Population Estimate
 - 347 -- 862
- ▶ Buck:Doe Ratio
 - 28 ± 8

GMU 51

- ▶ No. Animals Observed
 - 90
- ▶ Population Estimate
 - 236 -- 793
- ▶ Buck:Doe Ratio
 - 33 ± 12

2008 Deer Harvest Summary

GMU 5B

- ▶ Licenses Issued = 98
 - (20 public & 78 private)
- ▶ Harvest Total = 59
- ▶ Success Rate = 63%

GMU 51

- ▶ Licenses Issued = 314
 - (281 public & 33 private)
- ▶ Harvest = 65
- ▶ Success Rate = 26%

2009 Deer Hunt Comparison

GMU 5B

- ▶ Nov. 7-11, 2009
 - 15 Permits Available
 - Fee type: Quality

- ▶ Nov. 25-29, 2009
 - 10 Youth Only Permits Available
 - Fee type: Quality

GMU 51

- ▶ Oct. 24-28, 2009
 - 100 Permits Available
 - Fee type: Standard

- ▶ Oct. 31 – Nov. 4, 2009
 - 100 Permits Available
 - Fee type: Standard

2009 Unit 51 Hunt Overlaps

Deer

- ▶ Bow
 - Sept. 1-22
- ▶ Muzzleloader
 - N/A
- ▶ Rifle
 - Oct. 24-28
 - Oct. 31-Nov. 4

Elk

- ▶ Bow
 - Sept. 1-15
 - Sept. 16-22
- ▶ Muzzleloader
 - Dec. 5-9
- ▶ Rifle
 - Oct. 10-14 - MB
 - Oct. 17-24 - MB
 - Oct. 24-28 - MB
 - Nov. 7-11 - A
 - Nov. 14-18 - A

Considerations

- ▶ Number of deer licenses issued in Unit 51.
- ▶ Hunt Dates
 - Timing of deer hunts
 - Overlap with elk hunt
- ▶ Hunt Area (Full Unit or Sub Unit)
- ▶ Law Enforcement Priority
- ▶ 2009 Harvest Data Results