



Taos Plateau Habitat Connectivity Project



Project Contacts

BLM – Carl Thomson

CThomson@blm.gov

NMDGF – Brock Lorenzen

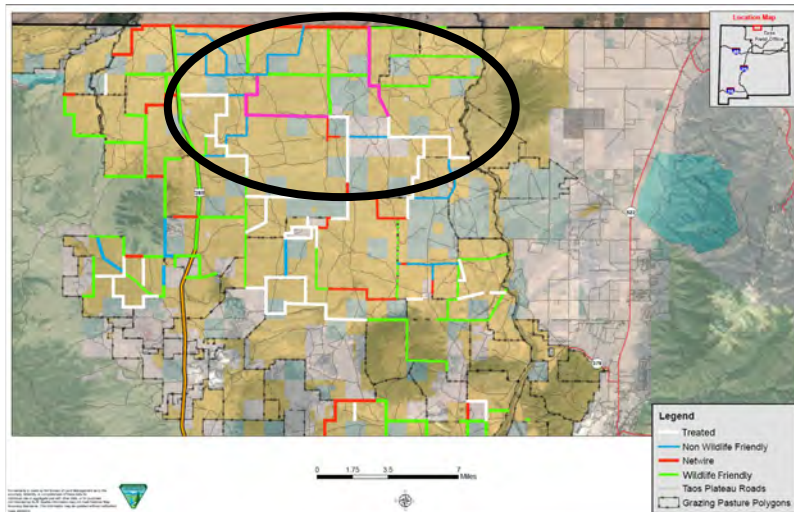
Brock.Lorenzen@dgf.nm.gov

- The Taos Plateau Habitat Connectivity project takes place on the on the Rio Grande del Norte National Monument managed by the BLM, encompassing essential winter habitat for the Northcentral Pronghorn herd and San Antonio elk herd. Historically this winter range and migration corridor has been fragmented and obstructed by the historic construction of netwire sheep fence and non-wildlife friendly fence on this landscape. The historic fences degrade wildlife habitat by causing mortality via direct entanglement, obstructing wildlife movement patters, causing calf/fawn separation, preventing access to resources, and by creating pinch points that increase likelihood of predation.
- Following numerous academic studies of wildlife geolocation data and movement patterns over the past decade, the BLM has been increasing habitat connectivity on this landscape by collaborating with grazing permittees and over a dozen partners convert over 72 miles of historic netwire and non-wildlife friendly fences to wildlife friendly specifications or remove it completely. The goals of this work include:
 - Expand access to essential winter habitat for big game including Pronghorn, Elk, and Mule Deer
 - Reduce fence related mortality on the Taos Plateau for Pronghorn, Elk, and Mule Deer
 - Provide for easier landscape movement for Pronghorn, Elk, and Mule Deer, increasing survival

Proposed Management Action

[Google Earth Link](#)

- In FY 2027 the BLM aims to convert 18 miles of netwire to wildlife friendly fence and remove an additional 11 miles of non-wildlife friendly fence. They have secured funding to convert 6.5 miles of netwire and are planning with volunteers to remove the 11 miles. To complete this work BLM is requesting assistance from NMDOW to convert the remaining 11.5 miles.
- The NMDOW, in collaboration with the BLM, will contract the removal and replacement of 11.5 miles of netwire fence with wildlife friendly fence at an estimated cost of \$23,000 per mile. This effort will:
 - Expand accessible winter habitat by over 50,000 acres
 - Connect multiple areas of previous connectivity work
- HSP Funds will be utilized for the payment of contracts remove and dispose of old fence off site, and the construction of new wildlife friendly fence.



Estimated Budget: \$265,000



Taos Plateau Habitat Connectivity



**Bureau of Land Management Taos
Field Office**

Taos Plateau Habitat Connectivity

Project Contacts

Brock Lorenzen
Brock.Lorenzen@dgf.nm.gov



Carl Thomson
CThomson@blm.gov



Background

Non-Wildlife Friendly Fence

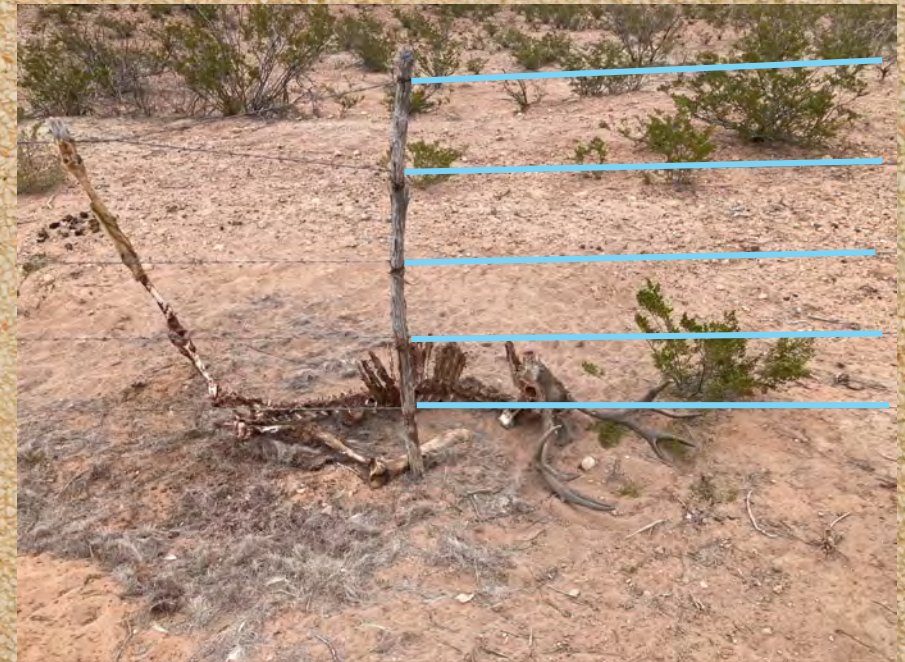
- **Netwire/Sheep fence (most restrictive)**
- **More than 4 strands**
- **Top wire higher than 42”**



Background

Non-Wildlife Friendly Fence

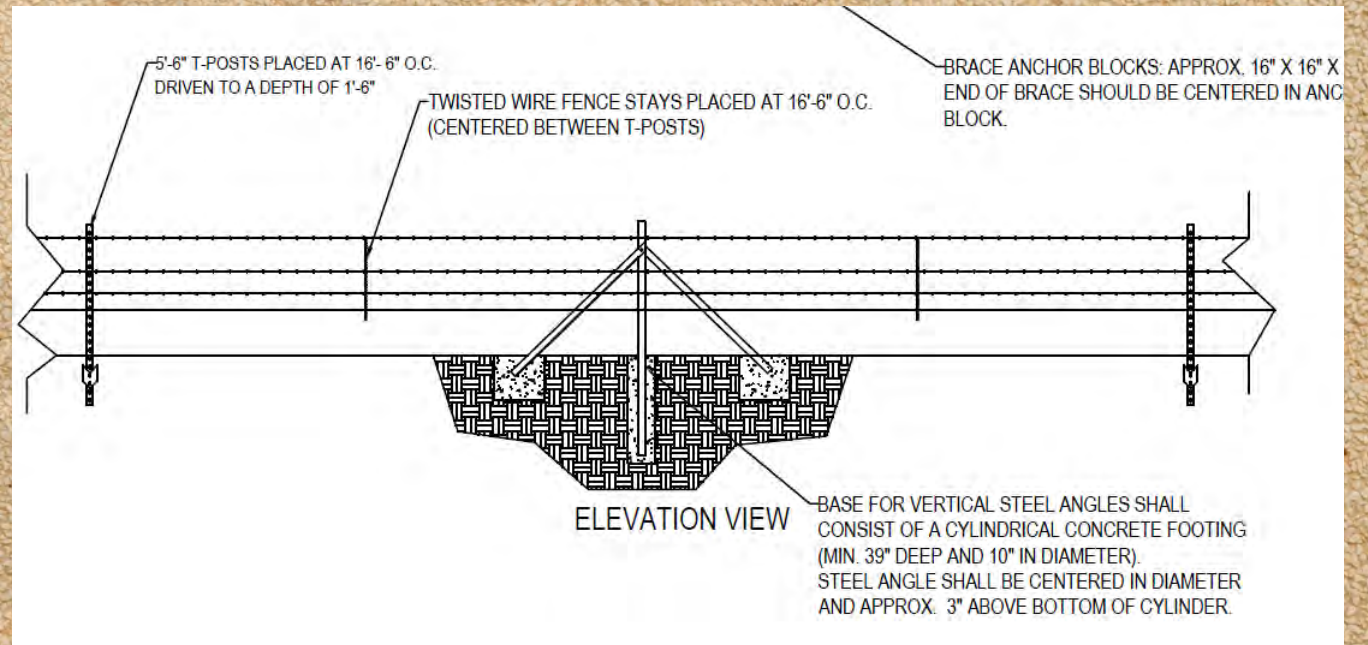
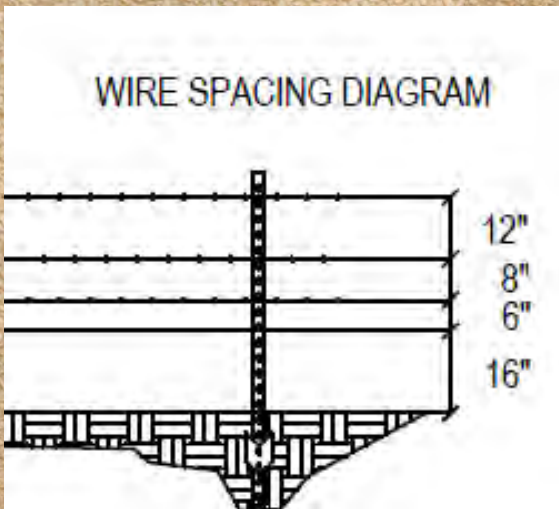
- **Entanglement (Mortality)**
- **Calf/Fawn Separation**
- **Altered Movement Patterns**
- **Predator Pinch Points**



Background

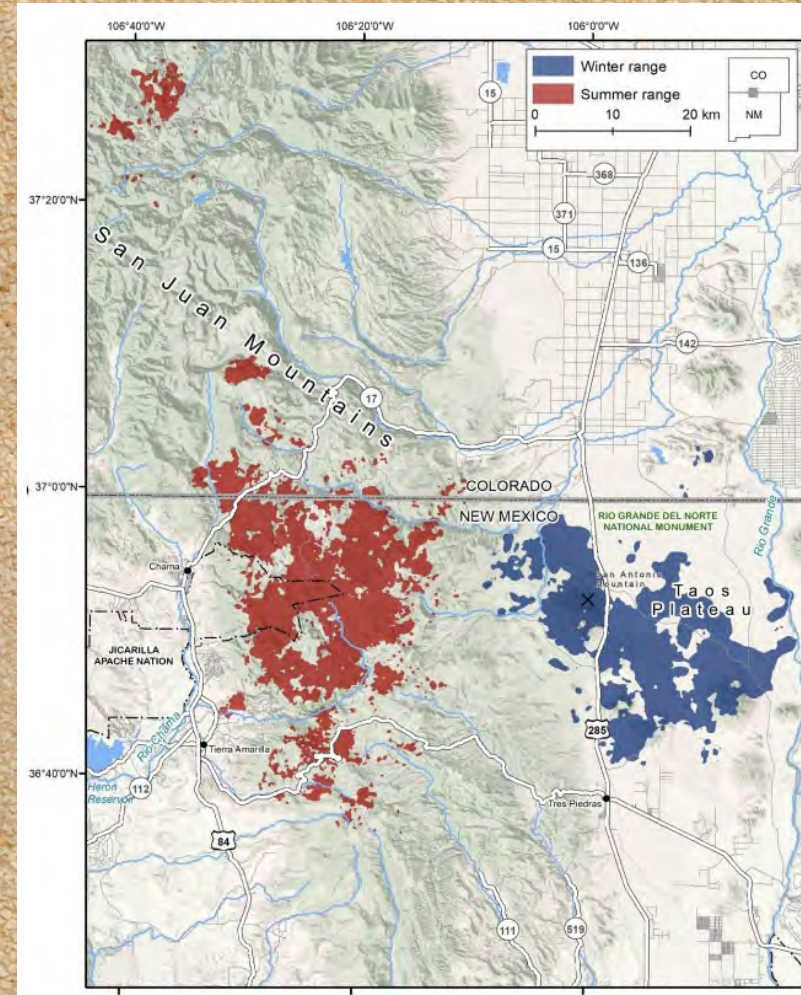
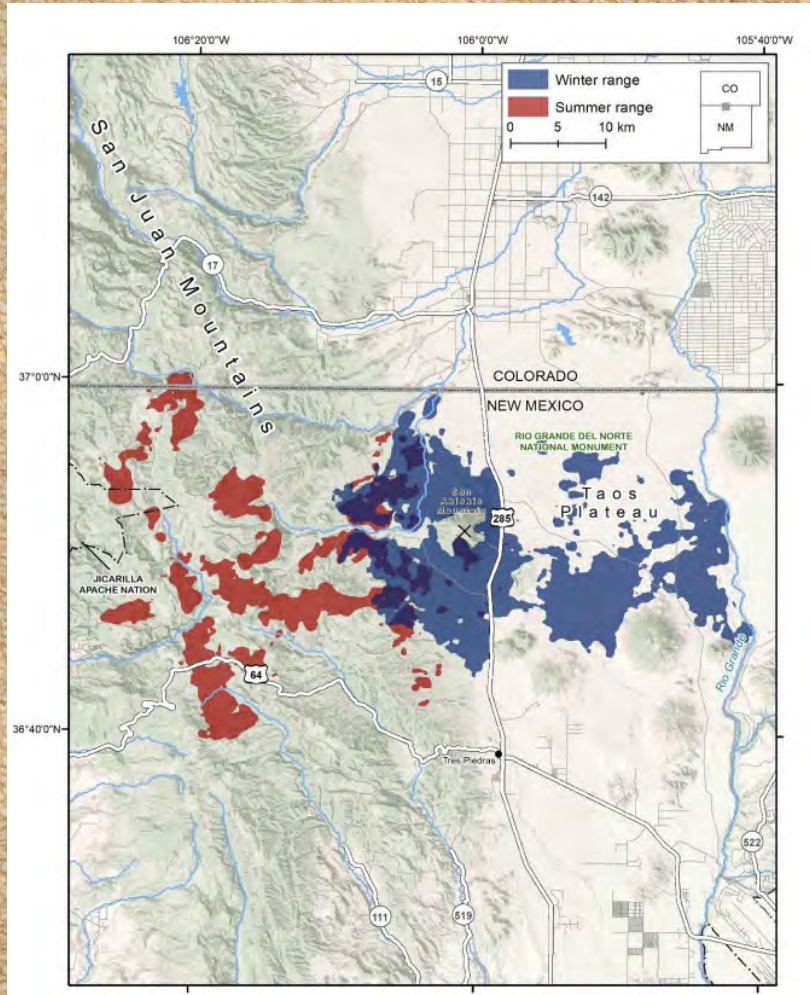
Wildlife Friendly Fence

- **Four strand**
- **Wire spacing**
- **Smooth bottom wire**



Location

**San Antonio
Pronghorn Herd
Summer and
Winter Ranges
(Data 2020 – 2022)**

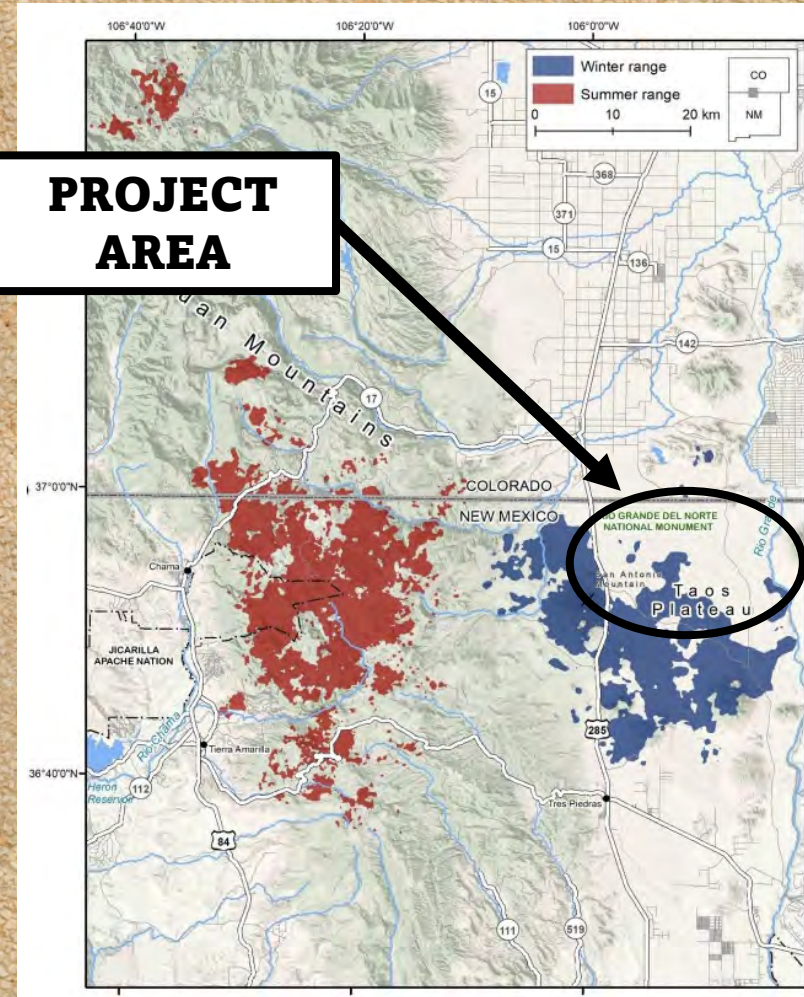
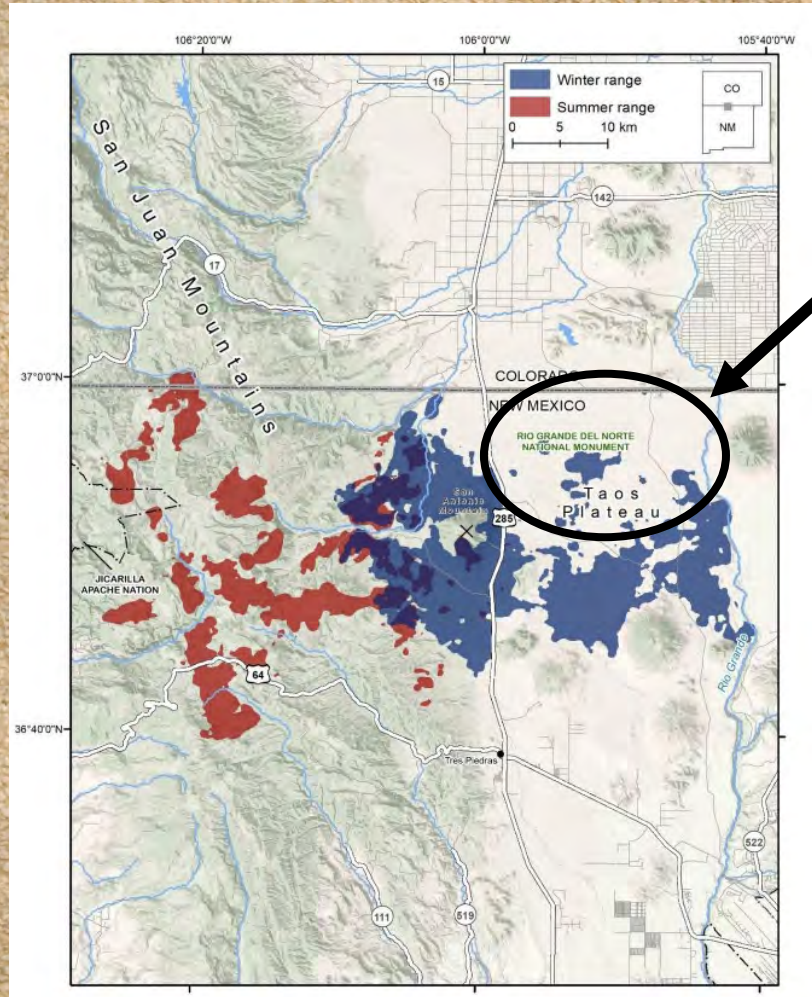


**San Antonio Elk
Herd Summer and
Winter Ranges
(Data 2019 – 2020)**

**Taos County, NM
Rio Grande del Norte National Monument**



Location



PROJECT AREA

San Antonio Pronghorn Herd Summer and Winter Ranges (Data 2020 - 2022)

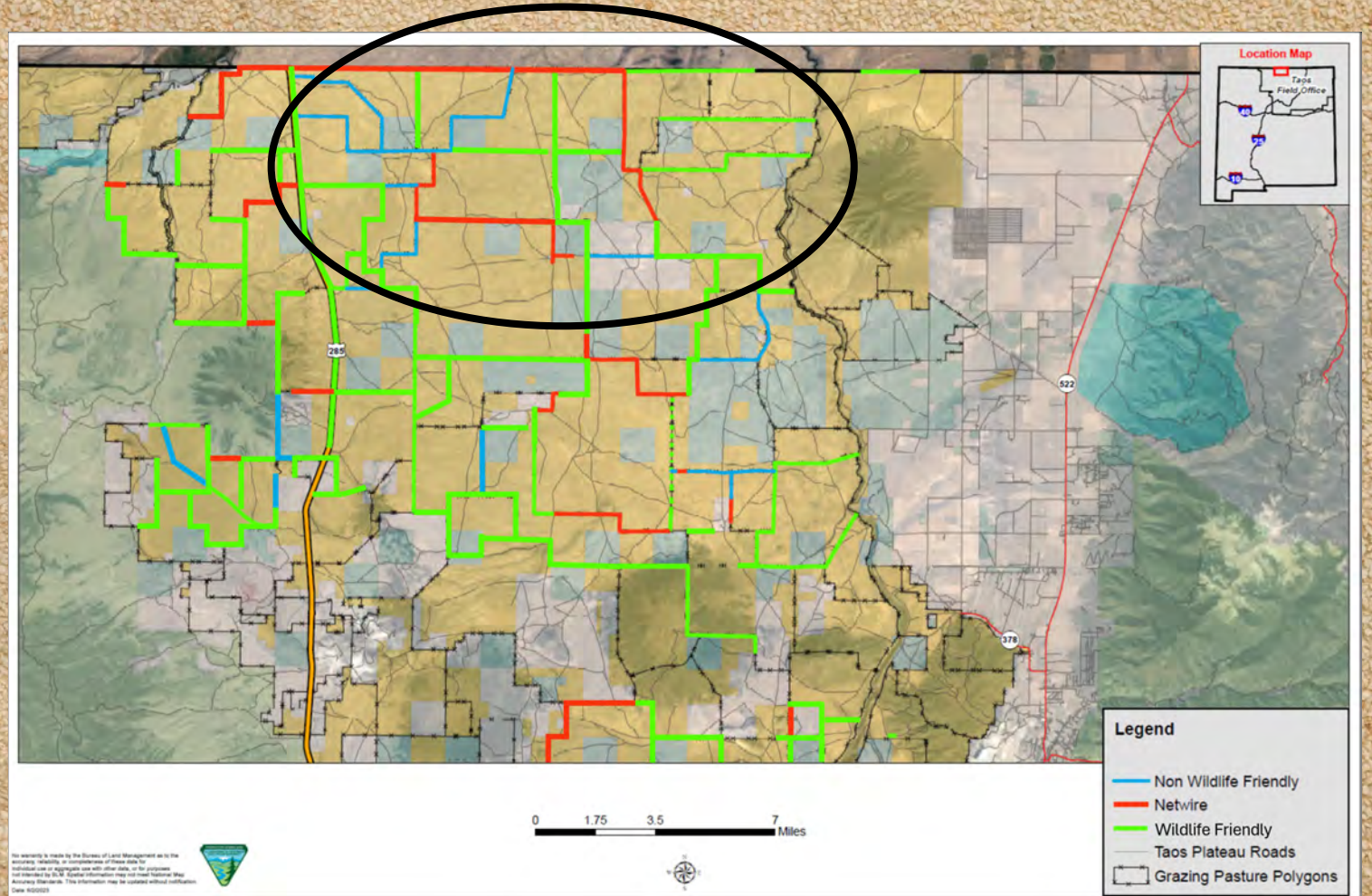
San Antonio Elk Herd Summer and Winter Ranges (Data 2019 - 2020)

**Taos County, NM
Rio Grande del Norte National Monument**



Location

- **62 Total Grazing Allotments**



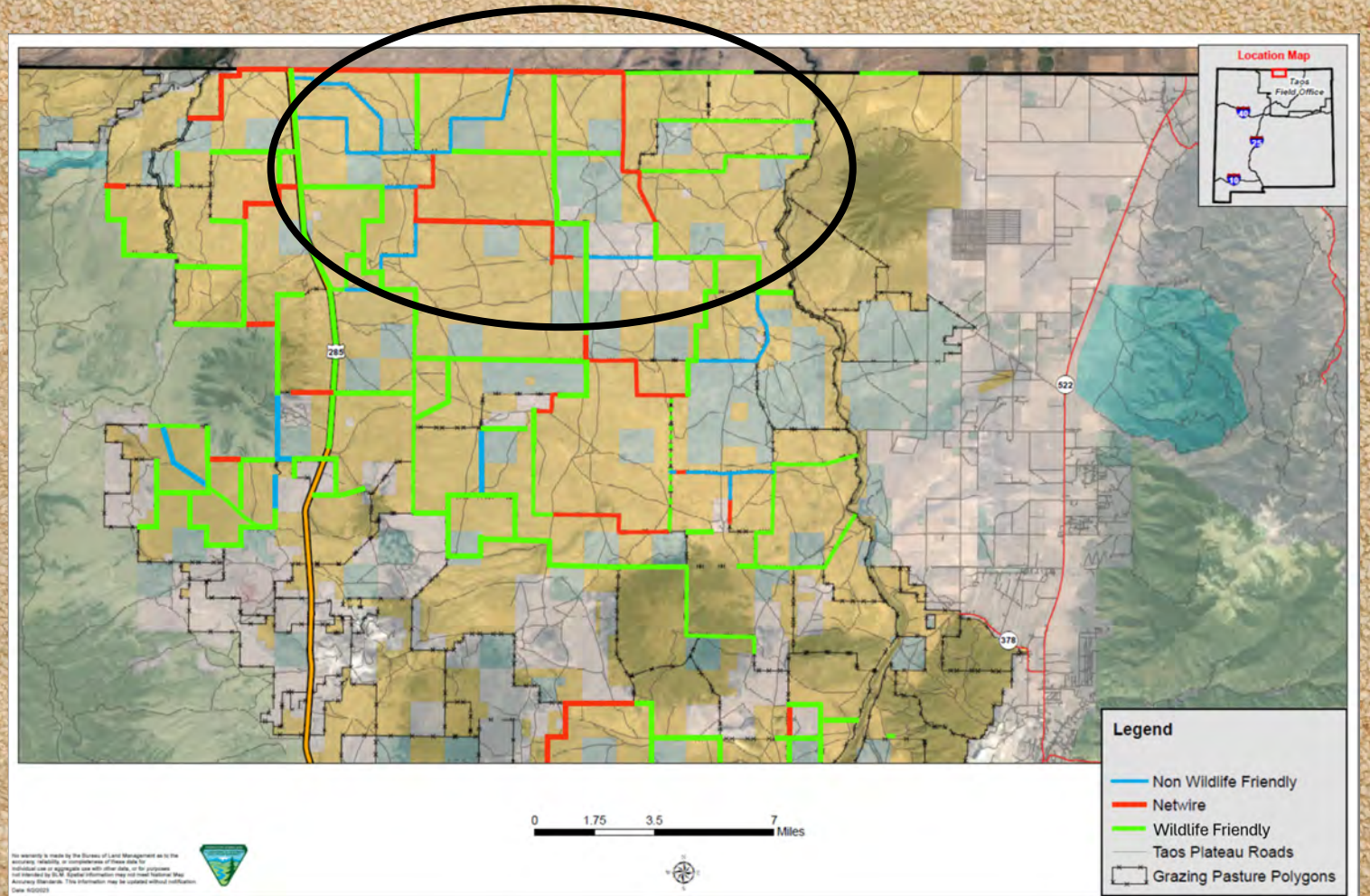
Taos County, NM

Rio Grande del Norte National Monument



Location

- **62 Total Grazing Allotments**
- **14 Allotments Vacant**



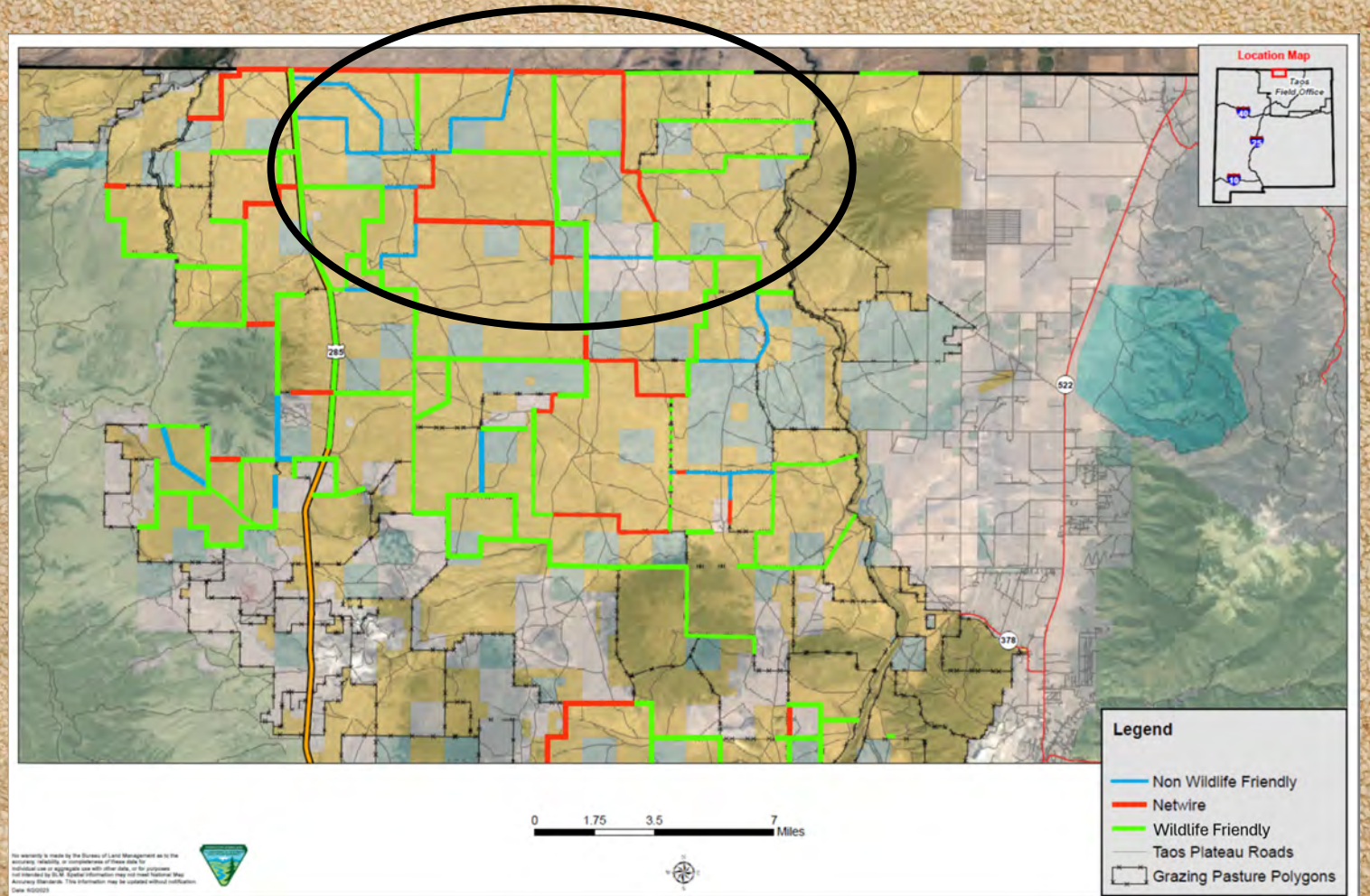
Taos County, NM

Rio Grande del Norte National Monument



Location

- **62 Total Grazing Allotments**
- **14 Allotments Vacant**
- **All new fence here must be constructed to wildlife friendly standards**

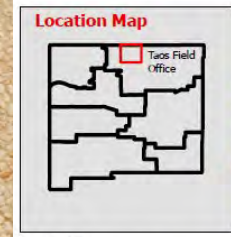
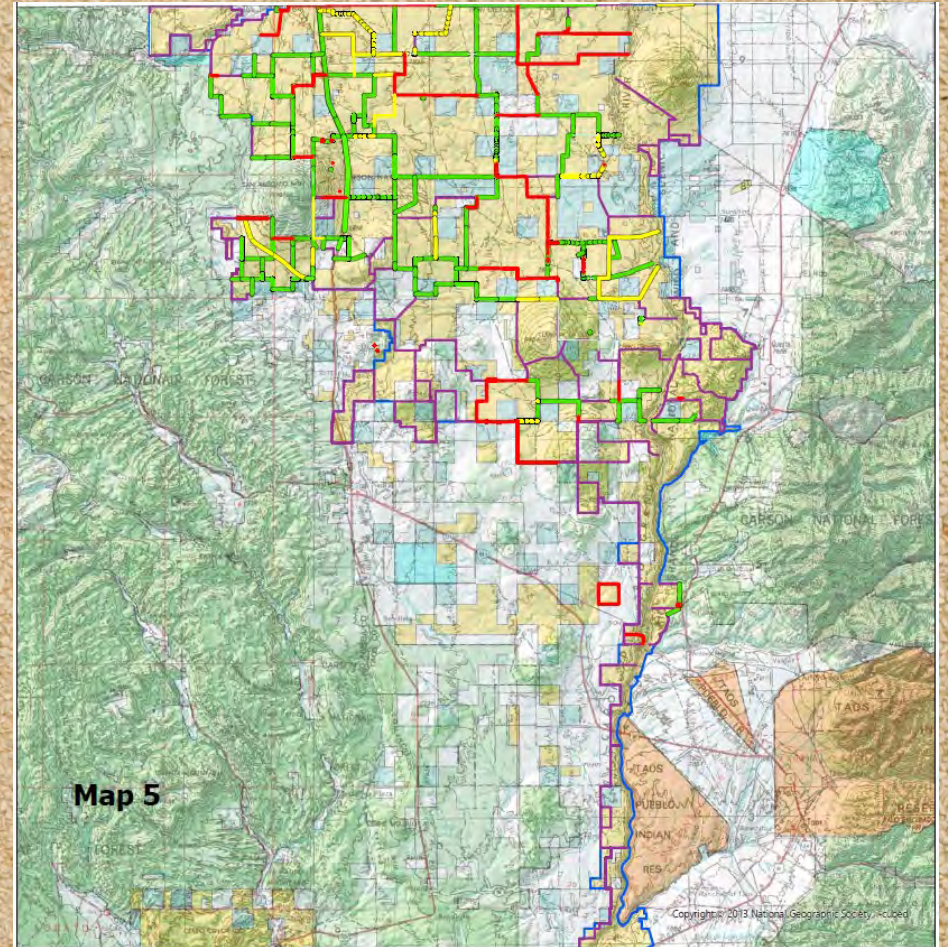


Taos County, NM

Rio Grande del Norte National Monument

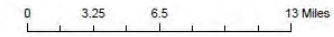


Expanding Past Efforts

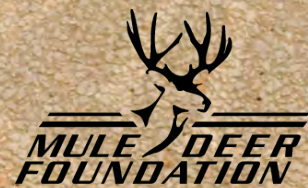


Legend

— Exlosures or Enclosures	— <all other values>
— Four strand	— Uninventoried
— Four strand barbed wire	— Bureau of Land Management
— Lay down Fence	— Forest Service
— More than four strand	— Tribal
— Net wire	— Private
— Other	— State
— Three strand	— State Game & Fish

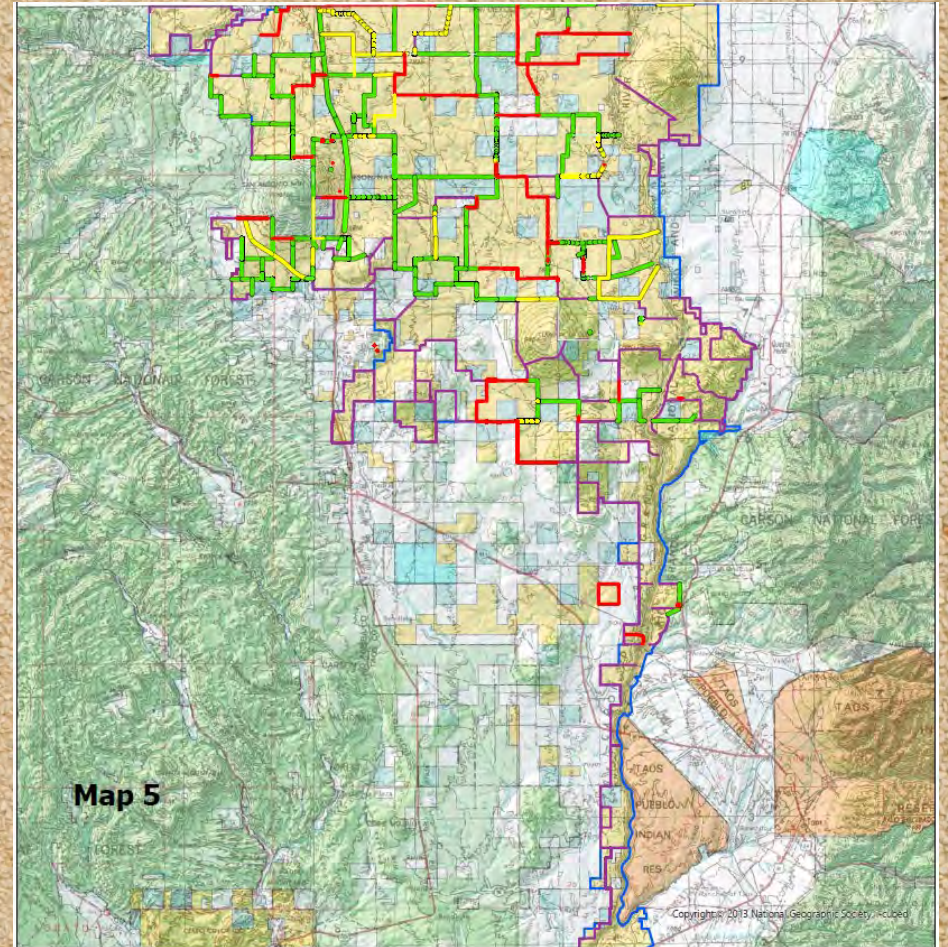


RMEF



Expanding Past Efforts

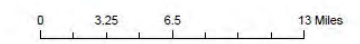
Since 2020



Date: 3/31/2026
 No warranty is made by the Bureau of Land Management as to the accuracy, reliability, or completeness of these data for individual use or aggregate use with other data, or for purposes not intended by BLM. Spatial information may not meet National Map Accuracy Standards. This information may be updated without notification.

Legend

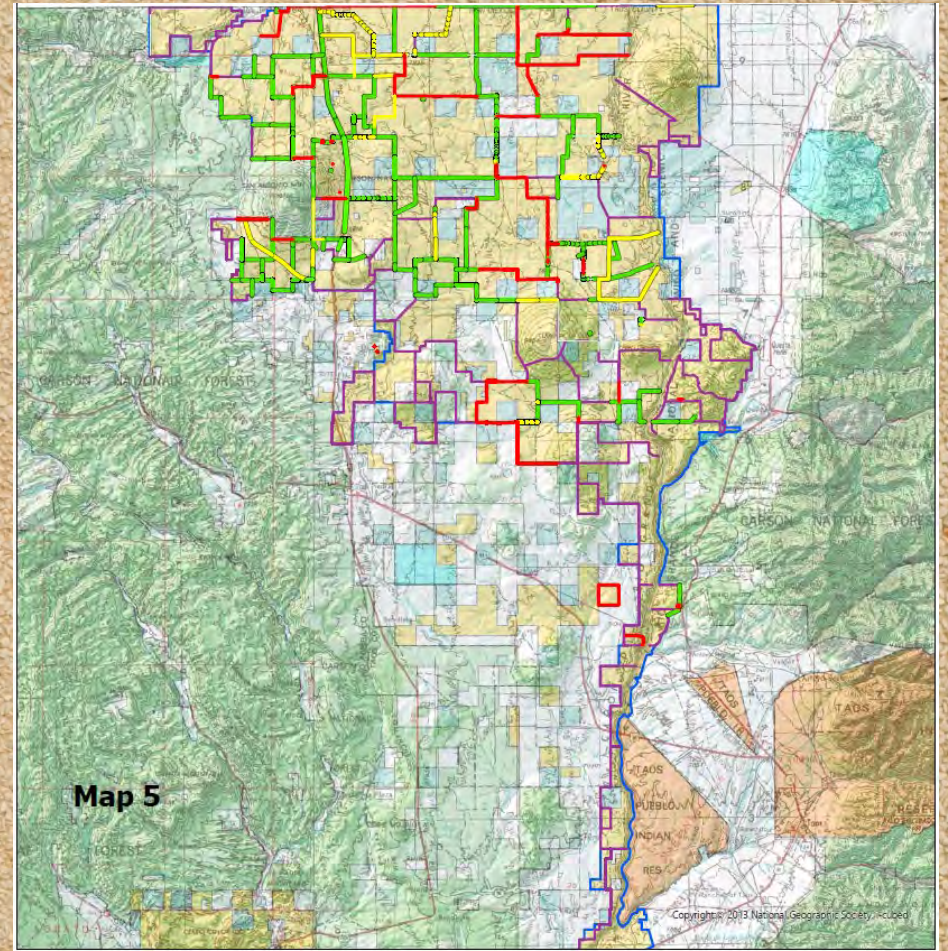
Four strand	<all other values>
Four strand barbed wire	Bureau of Land Management
Lay down Fence	Forest Service
More than four strand	Tribal
Net wire	Private
Other	State
Three strand	State Game & Fish



Expanding Past Efforts

Since 2020

- **HSP: ~24.5 miles of replacement**



Location Map

Legend

— Exclosures or Enclosures	— <all other values>
— Four strand	— Uninventoried
— Four strand barbed wire	— Bureau of Land Management
— Lay down Fence	— Forest Service
— More than four strand	— Tribal
— Net wire	— Private
— Other	— State
— Three strand	— State Game & Fish

Date: 3/31/2026
 No warranty is made by the Bureau of Land Management as to the accuracy, reliability, or completeness of these data for individual use or aggregate use with other data, or for purposes not intended by BLM. Spatial information may not meet National Map Accuracy Standards. This information may be updated without notification.

0 3.25 6.5 13 Miles



Expanding Past Efforts

Since 2020

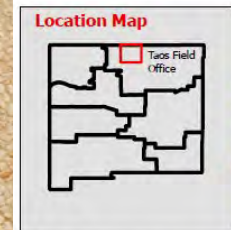
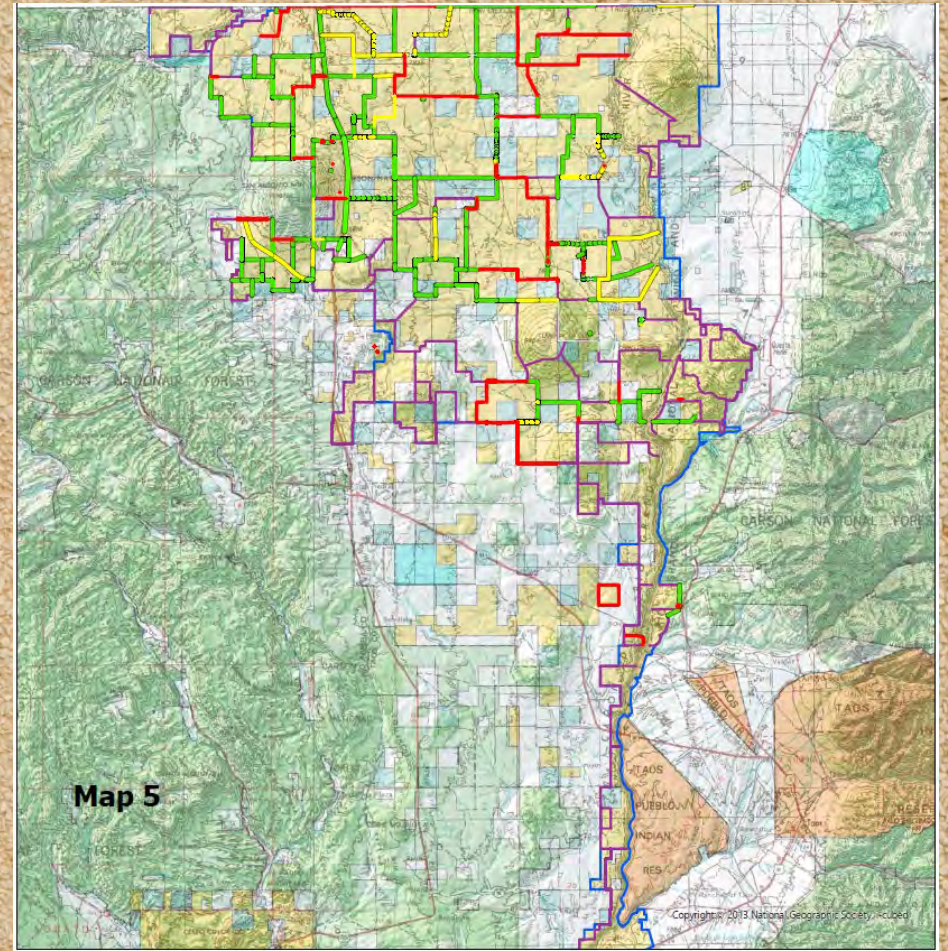
72 miles

HSP: ~24.5 miles of replacement

BLM: ~11.5 miles of replacement

Others: ~15 miles of replacement

Volunteers: ~17.5 miles removed, ~3.5 modified



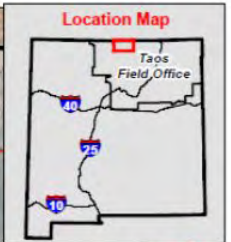
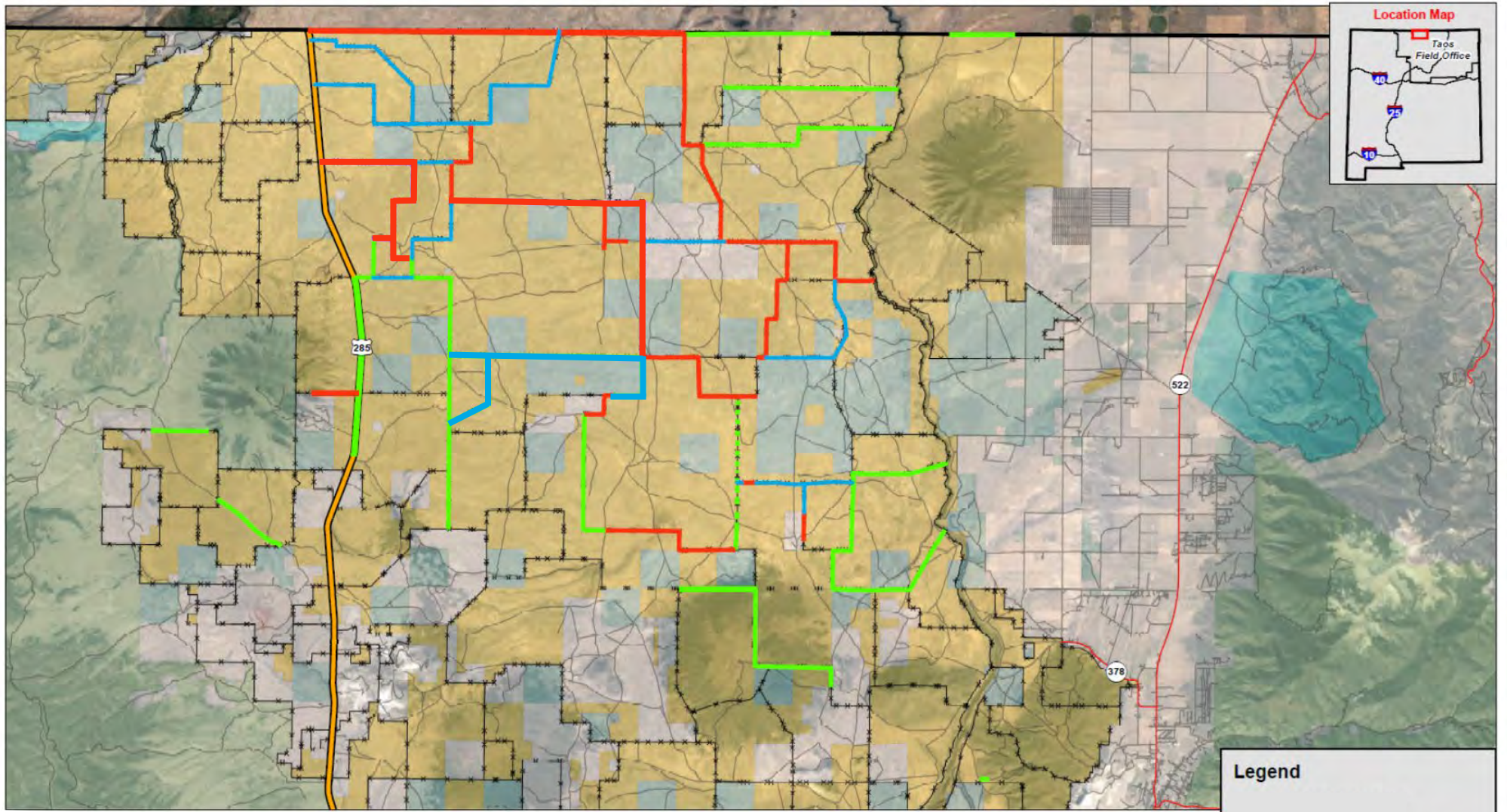
Legend

— Exclosures or Enclosures	— <all other values>
— Four strand	— Uninventoried
— Four strand barbed wire	— Bureau of Land Management
— Lay down Fence	— Forest Service
— More than four strand	— Tribal
— Net wire	— Private
— Other	— State
— Three strand	— State Game & Fish



Date: 3/31/2026
 No warranty is made by the Bureau of Land Management as to the accuracy, reliability, or completeness of these data for individual use or aggregate use with other data, or for purposes not intended by BLM. Spatial information may not meet National Map Accuracy Standards. This information may be updated without notification.





Legend

- Non Wildlife Friendly
- Netwire
- Wildlife Friendly
- Taos Plateau Roads
- ▭ Grazing Pasture Polygons



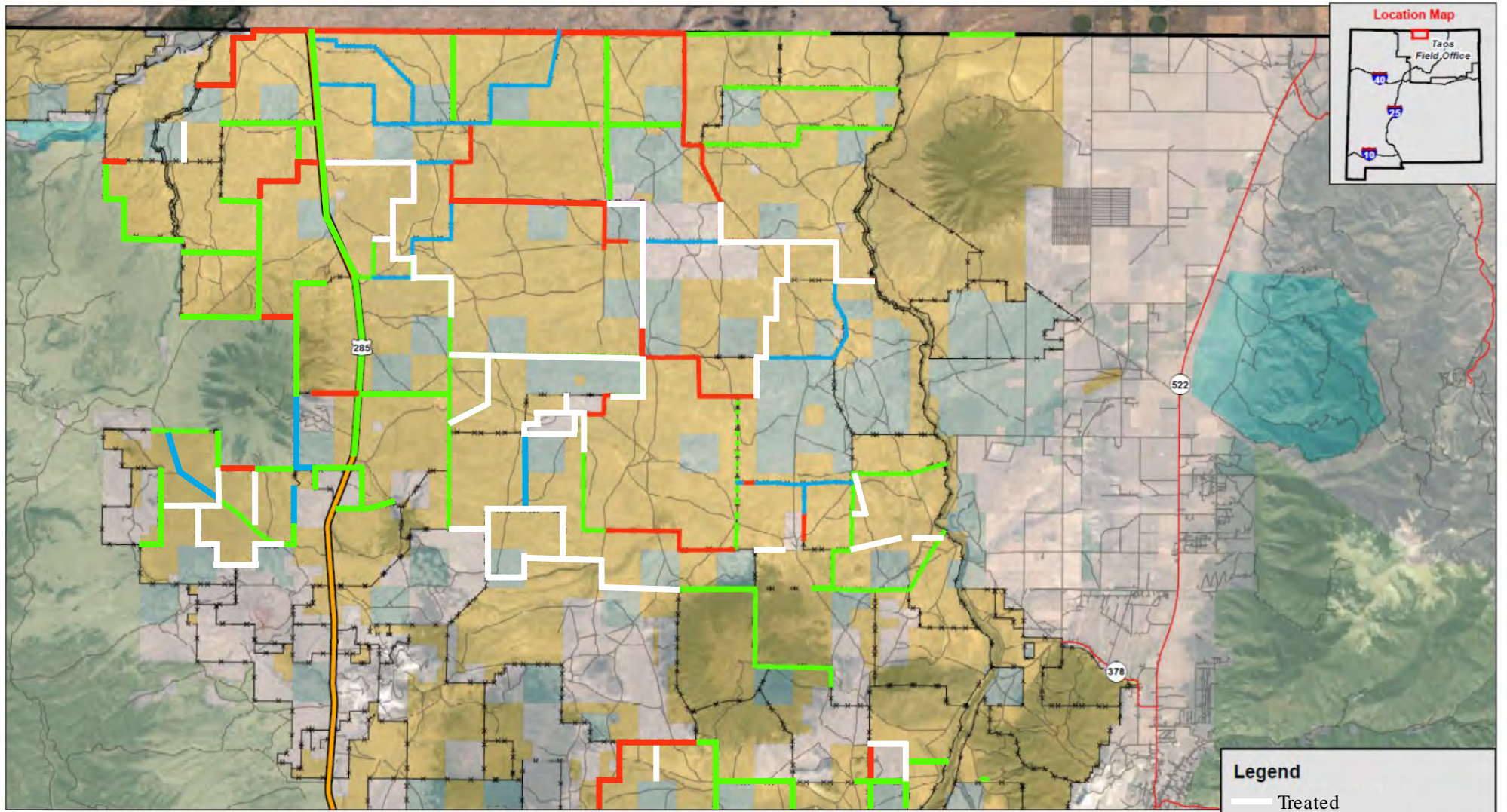
No warranty is made by the Bureau of Land Management as to the accuracy, reliability, or completeness of these data for individual use or aggregate use with other data, or for purposes not intended by BLM. Spatial information may not meet National Map Accuracy Standards. This information may be updated without notification.
Date: 6/20/23



Landscape In 2020

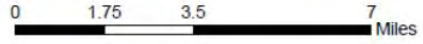


Landscape In 2026



Legend

- Treated
- Non Wildlife Friendly
- Netwire
- Wildlife Friendly
- Taos Plateau Roads
- ▭ Grazing Pasture Polygons



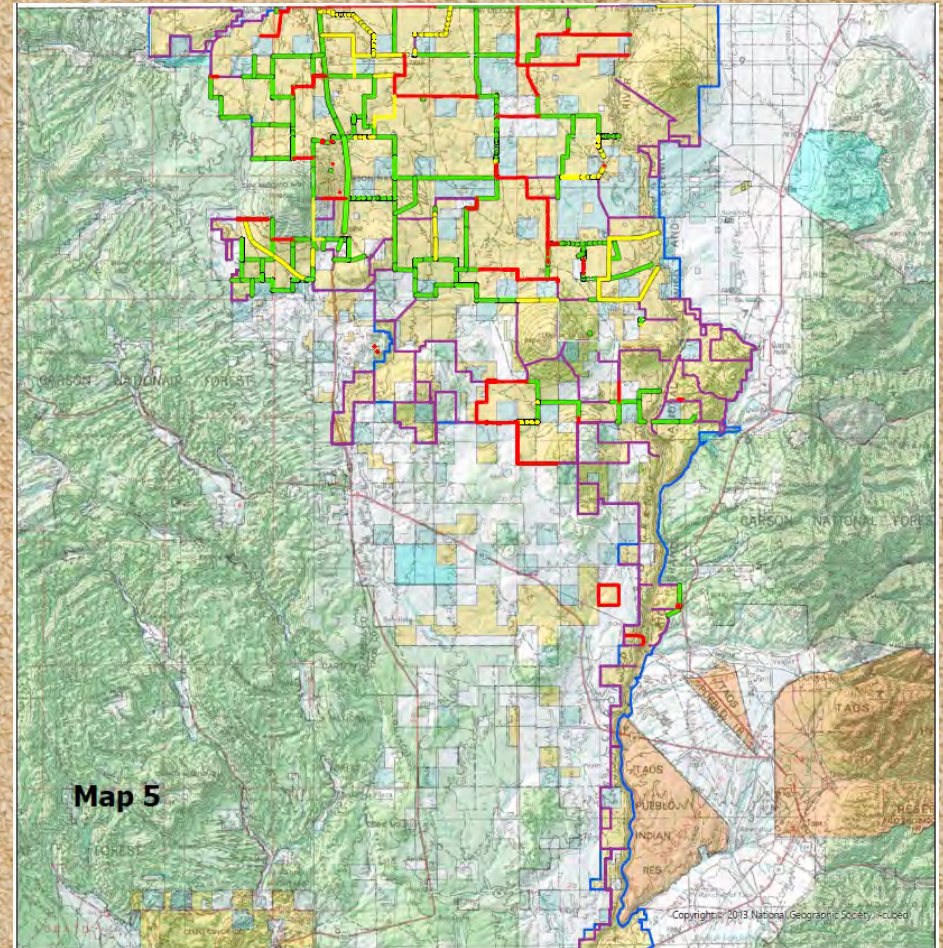
No warranty is made by the Bureau of Land Management as to the accuracy, reliability, or completeness of these data for individual use or aggregate use with other data, or for purposes not intended by BLM. Spatial information may not meet National Map Accuracy Standards. This information may be updated without notification.
Date: 6/22/23



Upcoming Work

In 2026

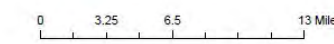
- **\$100K Grant from RMEF to BLM**
 - ~3 miles of replacement on Forest Service border
- **BLM replacing 3.6 miles with “laydown fence”**
 - Purchased by National Wildlife Federation
 - Implemented by BLM and BHA
- **~11 Miles Identified for Removal**



Legend	
—	Exlosures or Enclosures
—	<all other values>
—	Uninventoried
—	Bureau of Land Management
—	Forest Service
—	Tribal
—	Private
—	State
—	State Game & Fish
—	Four strand
—	Four strand barbed wire
—	Lay down Fence
—	More than four strand
—	Net wire
—	Other
—	Three strand



Date: 3/31/2026
No warranty is made by the Bureau of Land Management as to the accuracy, reliability, or completeness of these data for individual use or aggregate use with other data, or for purposes not intended by BLM. Spatial information may not meet National Map Accuracy Standards. This information may be updated without notification.

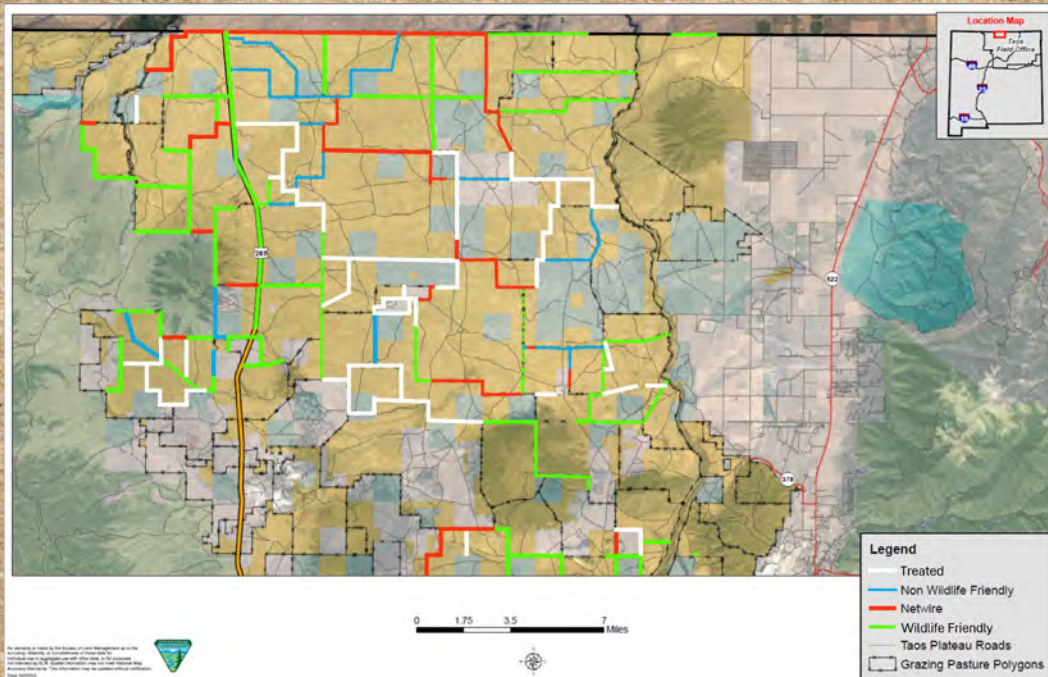


RMEF



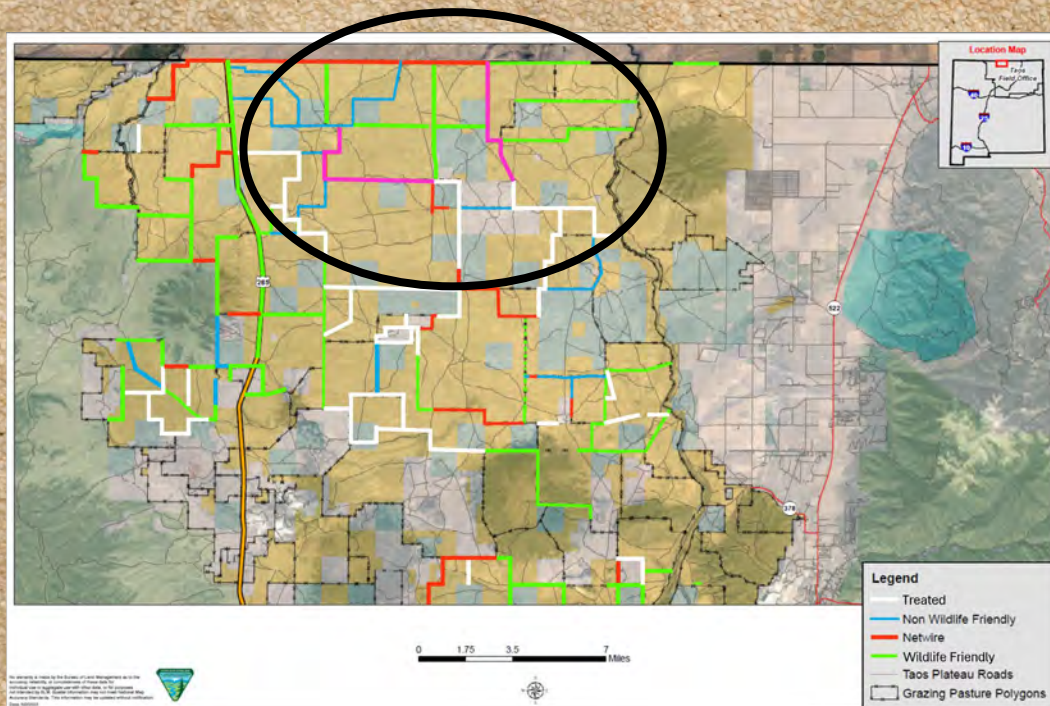
Proposed HSP Project

- Covert 11.5 Miles of Netwire to Wildlife Friendly



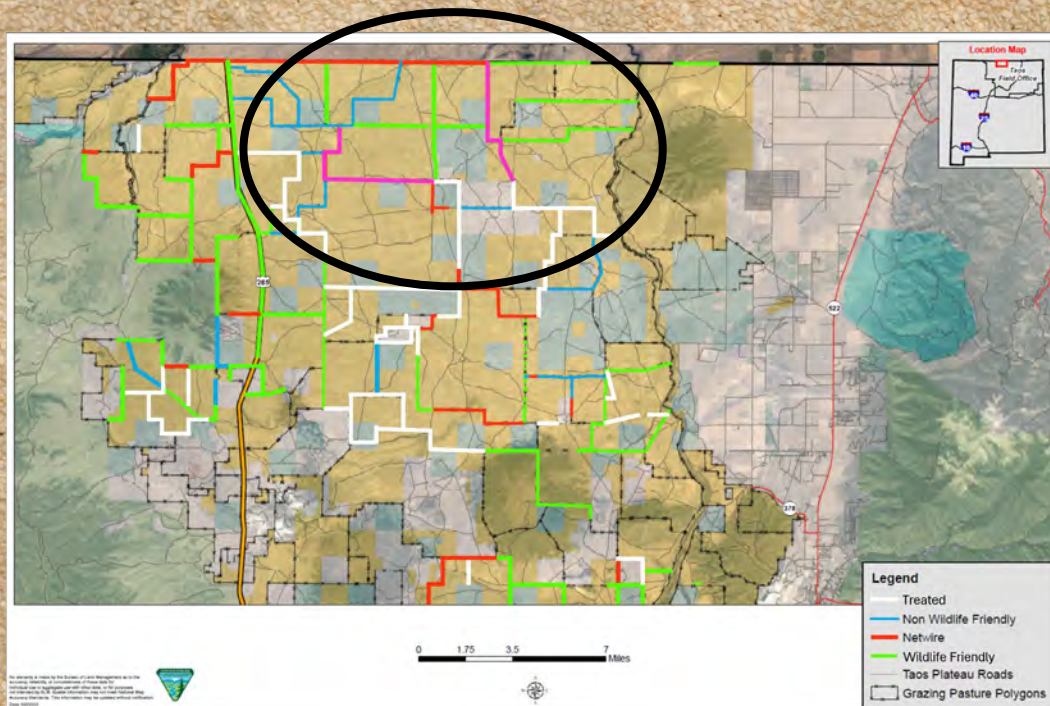
Proposed HSP Project

- Convert 11.5 Miles of Netwire to Wildlife Friendly



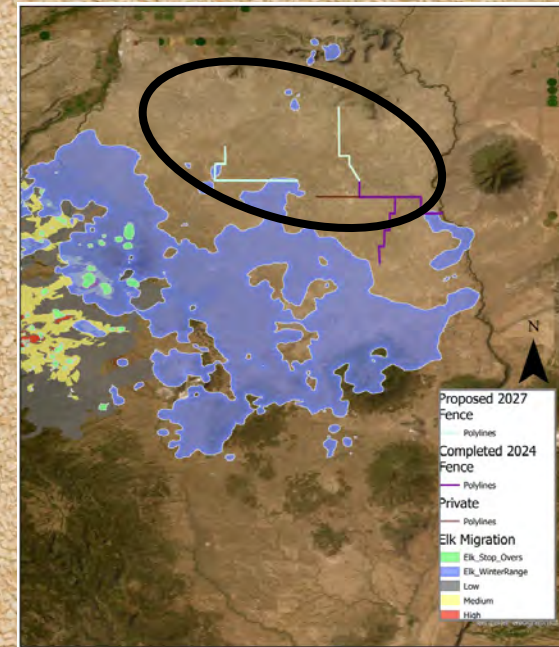
Proposed HSP Project

- Convert 11.5 Miles of Netwire to Wildlife Friendly
- Connects areas of previous treatment

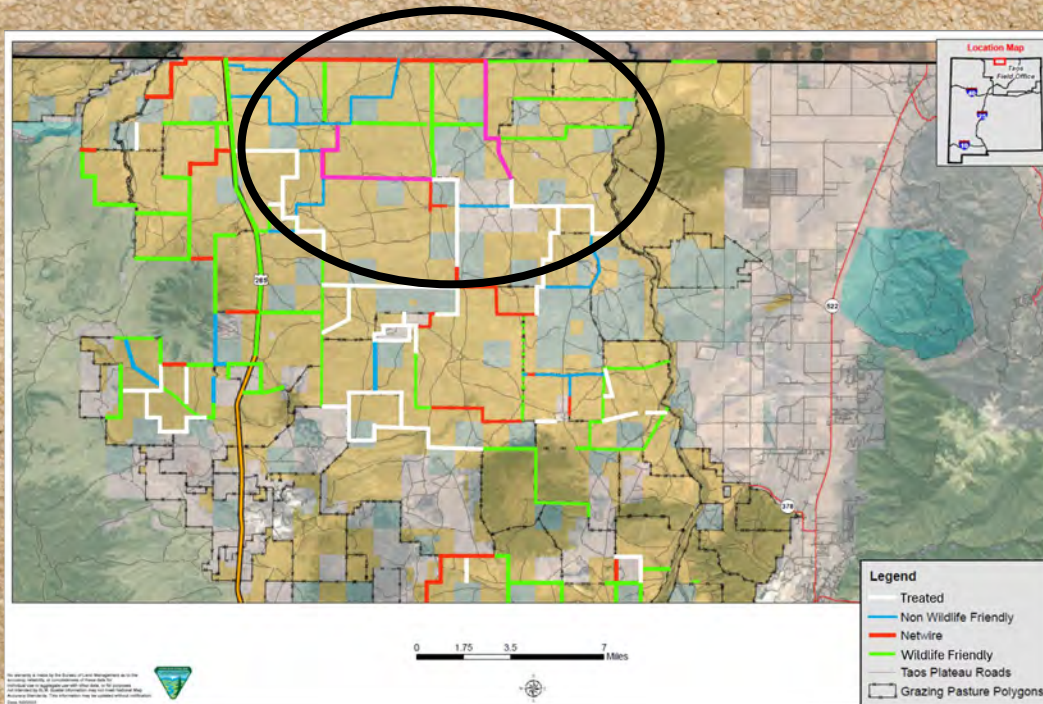


Proposed HSP Project

- Convert 11.5 Miles of Netwire to Wildlife Friendly
- Connects areas of previous treatment



Elk Winter Habitat Prior to 2024 Fence Replacement

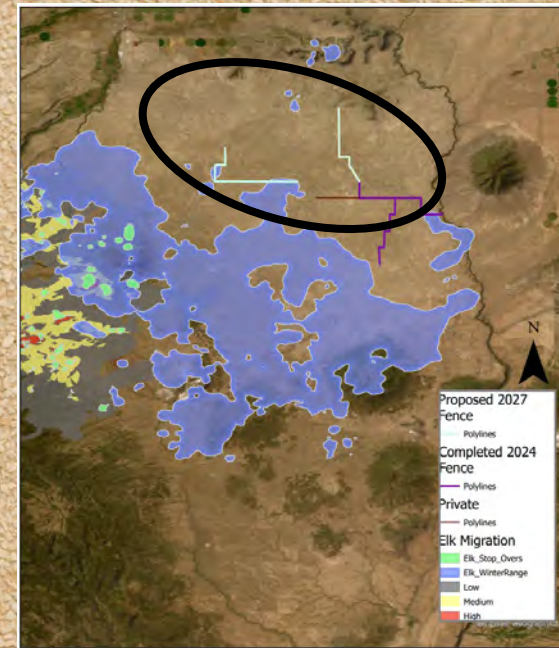


Pronghorn Winter Habitat Prior to 2024 Fence Replacement

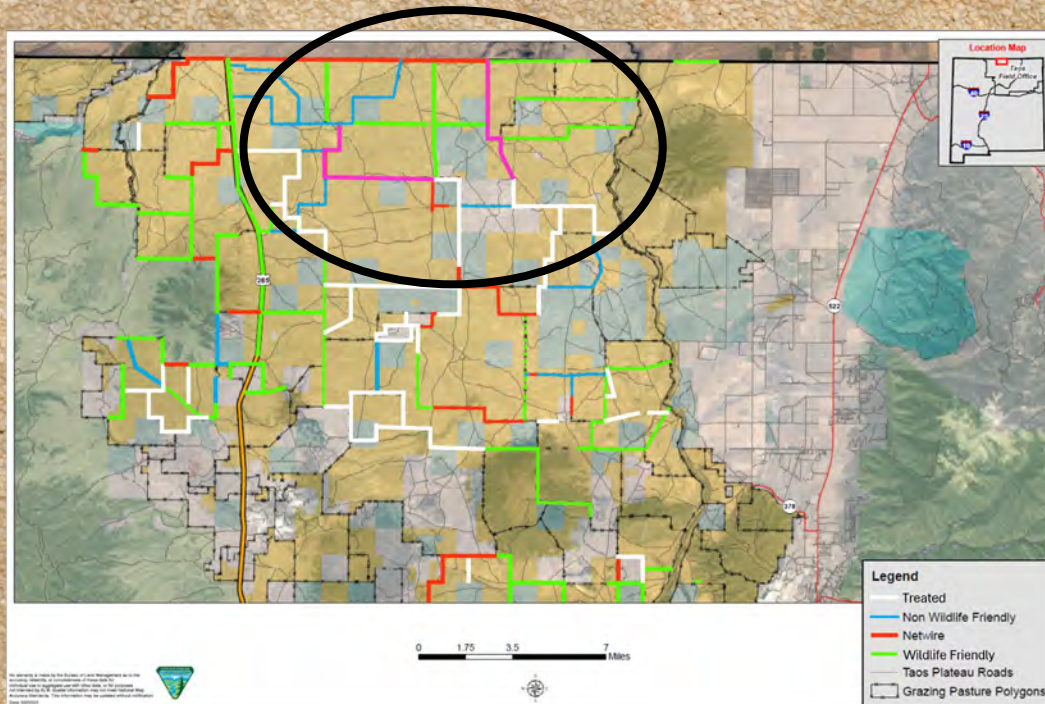


Proposed HSP Project

- Convert 11.5 Miles of Netwire to Wildlife Friendly
- Connects areas of previous treatment
- Expands accessible Winter Habitat by +50,000 acres



Elk Winter Habitat Prior to 2024 Fence Replacement



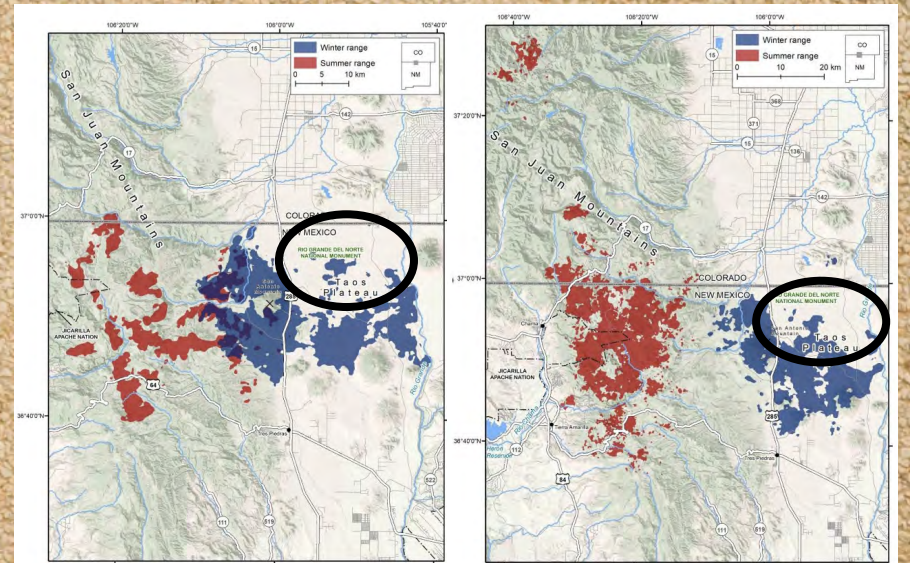
Pronghorn Winter Habitat Prior to 2024 Fence Replacement



Proposed HSP Project

Benefits

- **Access to Winter range for Pronghorn, Elk, and Deer greatly expanded**
- **Connect previous efforts to multiply ecological lift**
- **Reduce Winter mortality from fence and predator-fence interactions**



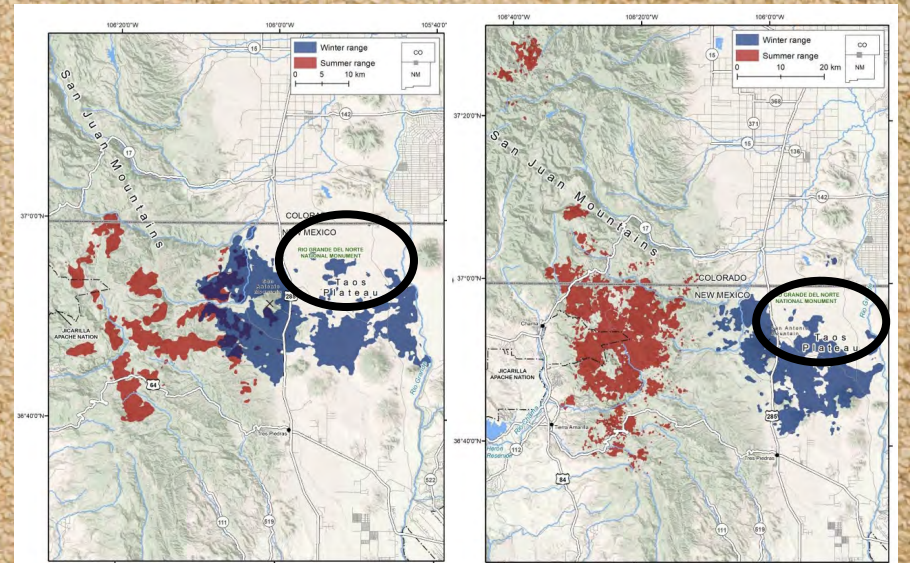
Proposed HSP Project

Estimated Cost

Item	Unit Price	Quantity	Total
Fence Removal	\$0.44/ ft	62,200	\$27,368
Fence Construction	\$3.54/ ft	62,200	\$220,188
Corner Braces	\$407 each	10	\$2,442
H-Braces	\$275 each	38	\$10,450
Mobilization	\$11/ mile	211	\$2,266

TOTAL ESTIMATE = \$265,000

**Expected Implementation:
June 2027 – September 2028**



Project Name:

Project relation to CAC advice or priorities:

Project Specific Details:

Historical Data:

Itemized Use of Funds:

Comprehensive Project Analysis:

Monitoring Plan/ Strategy:

Project Emphasis Species:

