

## **PROPOSED FISHERIES RULE SUMMARY, 2026-2030**

The fisheries rule (19.31.4 NMAC) and relevant sections of the manner and method of taking rule (19.31.10) are amended every four years as part of the fisheries rule development cycle. The current 4-year fisheries rule expires March 31, 2026 and proposed changes would take effect on April 1, 2026. Proposed changes to the rule are made based on findings in scientific literature, data collected by Department staff, and public observations and recommendations.

Proposed amendments to the fisheries rule (19.31.4 NMAC) include:

- Clarify the definition of “Barbless lure or fly” to make it consistent with the definition in the manner and method of taking rule
- Add a definition for ‘Special trout waters’
- Change the Special Trout Water designation in Jack’s Creek to remove the bag limit for rainbow trout, brown trout, and brook trout
- Designate Special Trout Waters with catch-and-release for Rio Grande Cutthroat Trout and unlimited bag limit for rainbow trout, brown trout, and brook trout in sections of Rio San Antonio (Rio Arriba county) and Rio Chiquito (Taos county)
- Removed references to ice fishing restrictions for specific waters to make it consistent with the manner and method of taking rule
- Designate it unlawful to fish from the boat ramp at the Crusher Hole Day Use Area and Texas Hole Day Use Area located in Navajo Lake State Park (San Juan County)

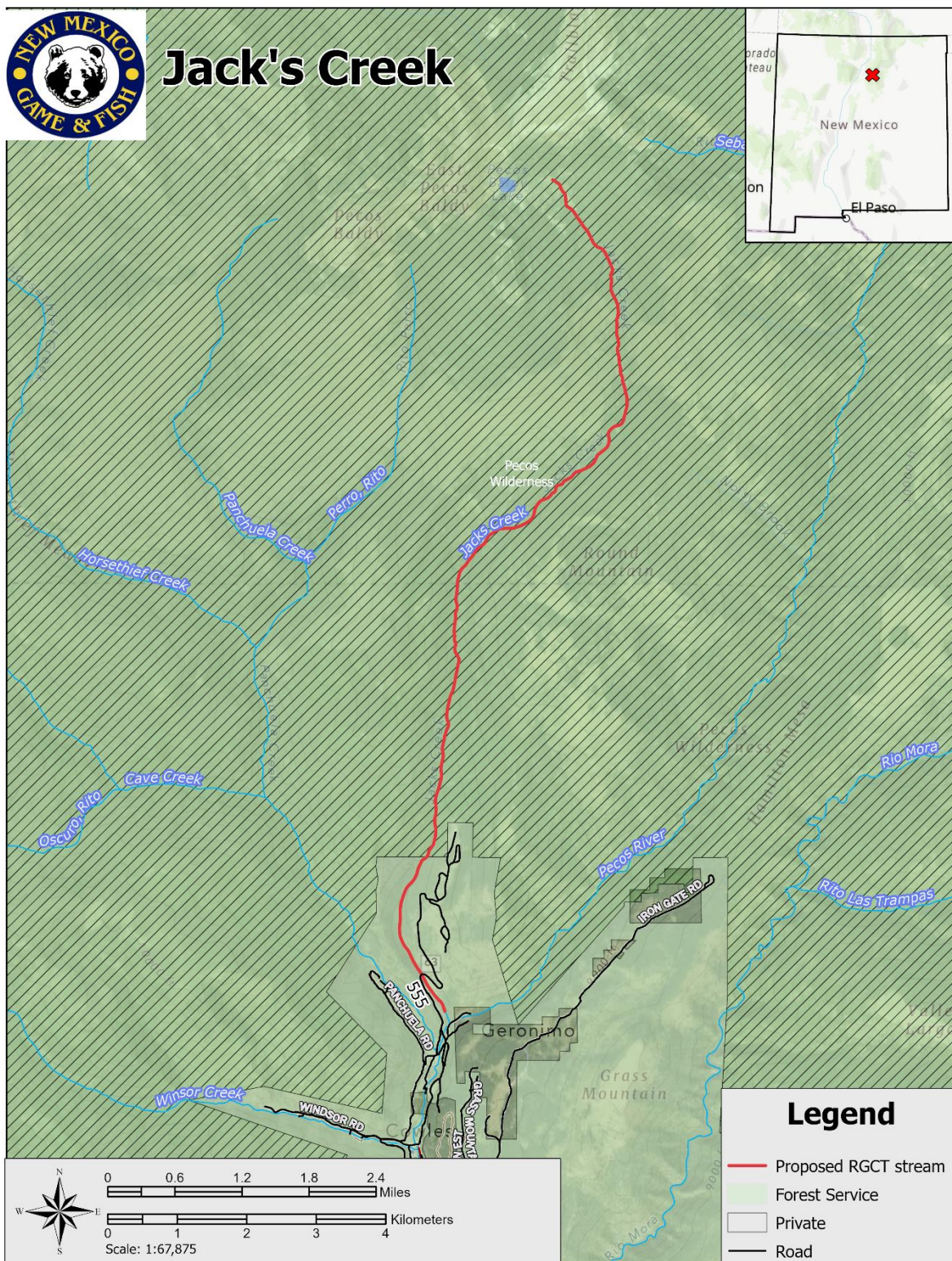
Proposed amendments to the manner and method of taking rule (19.31.10) include:

- Clarify the definition of “Barbless lure or fly” to make it consistent with the definition in the fisheries rule
- Removed references to ice fishing restrictions for specific waters to make it consistent with the fisheries rule
- Clarify trotline use in Class A lakes and waterbodies generally inaccessible to the public
- Clarify that it is unlawful to use baitfish in the Bureau of Land Management overflow wetlands
- Clarify when the Director can temporarily suspend angling limits and/or manner and method of take under certain conditions
- Establish when the Director can temporarily close a fishery and/or alter manner and method of take under certain conditions
- Add Jackson lake WMA to the list of locations where electric boat motors can be used

If you would like to comment on the proposal, send email to: [DGF-FisheriesRule@dgf.nm.gov](mailto:DGF-FisheriesRule@dgf.nm.gov)

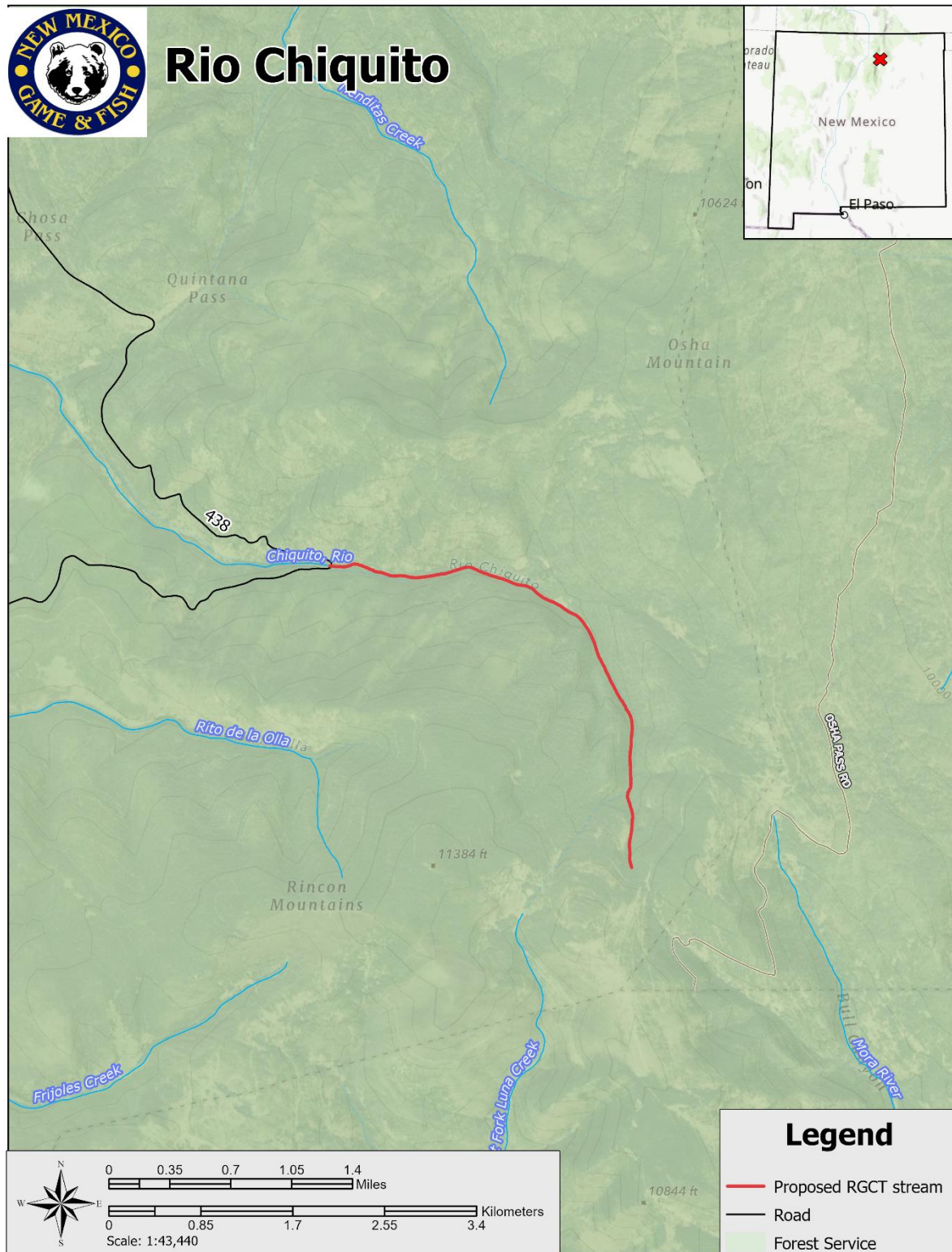


# Jack's Creek

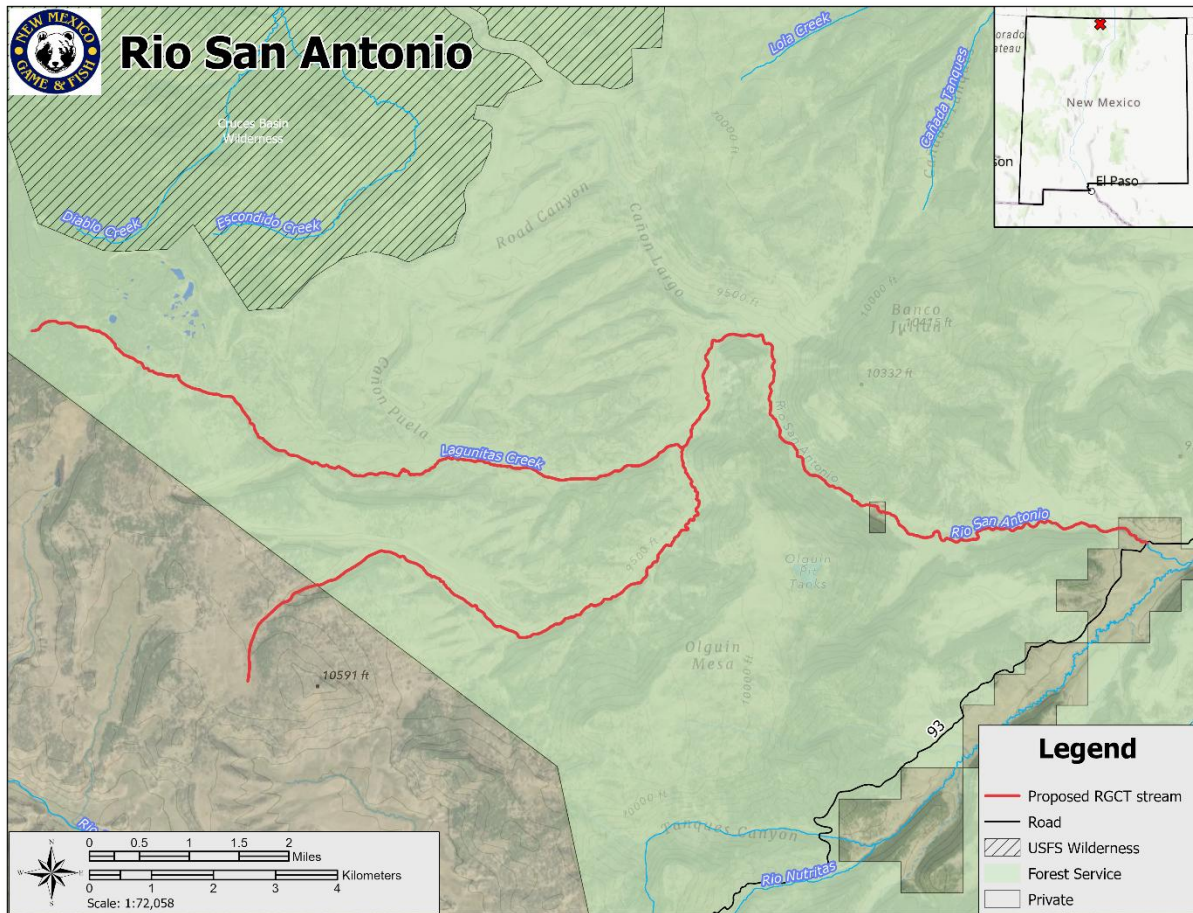




Proposed updated Special Trout Water on Jack's Creek (red line).



Proposed Special Trout Water on Rio Chiquito (red line).



Proposed Special Trout Water on Rio San Antonio (red line).