



# Stewart Meadows Phase 1 Restoration Project



- The Stewart Meadows Phase 1 Restoration Project Area is located along one of the few laterally unconfined reaches of the Rio San Antonio, where the river exits the Tusas Mountains and creates the western boundary of the Taos Plateau Volcanic Field. Much of the Rio San Antonio Watershed is composed of highly erodible fine textured soils and loosely consolidated rock. The grazing management history and logging following the arrival of the railroad in 1880 has contributed to erosion related degradation across this watershed.
- Since its acquisition by the Carson National Forest in 1973, efforts have been underway to restore the Stewart Meadows area due to its unique and sensitive wetland and riparian habitat. These efforts have included the exclusion of livestock, previous wetland restoration work, and recent instream work in the upper watershed. Continuing this legacy, NMDGF has funded conceptual engineering designs of a phased approach for instream, riparian, and floodplain restoration work at Stewart Meadows.
- Previous efforts have been essential primers to prepare the Stewart Meadows area for Phase 1 of instream, riparian, and floodplain restoration work. The goals of this work include:
  - Reconnecting historic floodplain with channels, wetlands, and backwater habitat
  - Redistributing flood energy and sediment across the valley bottom
  - Increasing overbank flow at lower flood stages
  - Accelerating floodplain development
  - Improving water quality: reduced turbidity and increased stream shading
  - Increased growth and footprint of riparian vegetation

## Project Contacts

USFS – Nessa Rasmussen

[Jenny.Rasmussen2@usda.gov](mailto:Jenny.Rasmussen2@usda.gov)

NMDGF – Brock Lorenzen

[Brock.Lorenzen@dgf.nm.gov](mailto:Brock.Lorenzen@dgf.nm.gov)



## Proposed Management Action [Google Earth Link](#)

- The NMDGF, in collaboration with the USFS, will contract the construction of instream, riparian, and floodplain restoration features along 1 mile of the Rio San Antonio including:
  - Earthen channel plugs
  - Lead-out channels
  - Channel shaping features
  - Shallow burrow wetland areas
- HSP Funds will be utilized for the purchase of material, mobilization of heavy equipment, labor wages to operate machinery and construct restoration features, de-mobilization of equipment, and the mitigation of implementation footprints by seeding disturbed areas.
- Following the implementation, the NMDGF and USFS will monitor and evaluate the efficacy and effects of this landscape restoration effort as part of planning and implementing future phases of this work.

Estimated Budget: \$435,000

# Stewart Meadows Phase 1

Tres Piedras District, Carson National Forest



# Stewart Meadows Phase 1

## Project Contacts



Brock Lorenzen  
Brock.Lorenzen@dgf.nm.gov



Nessa Rasmussen  
Jenny.Rasmussen2@usda.gov

# Phase 1: Project Overview

Location

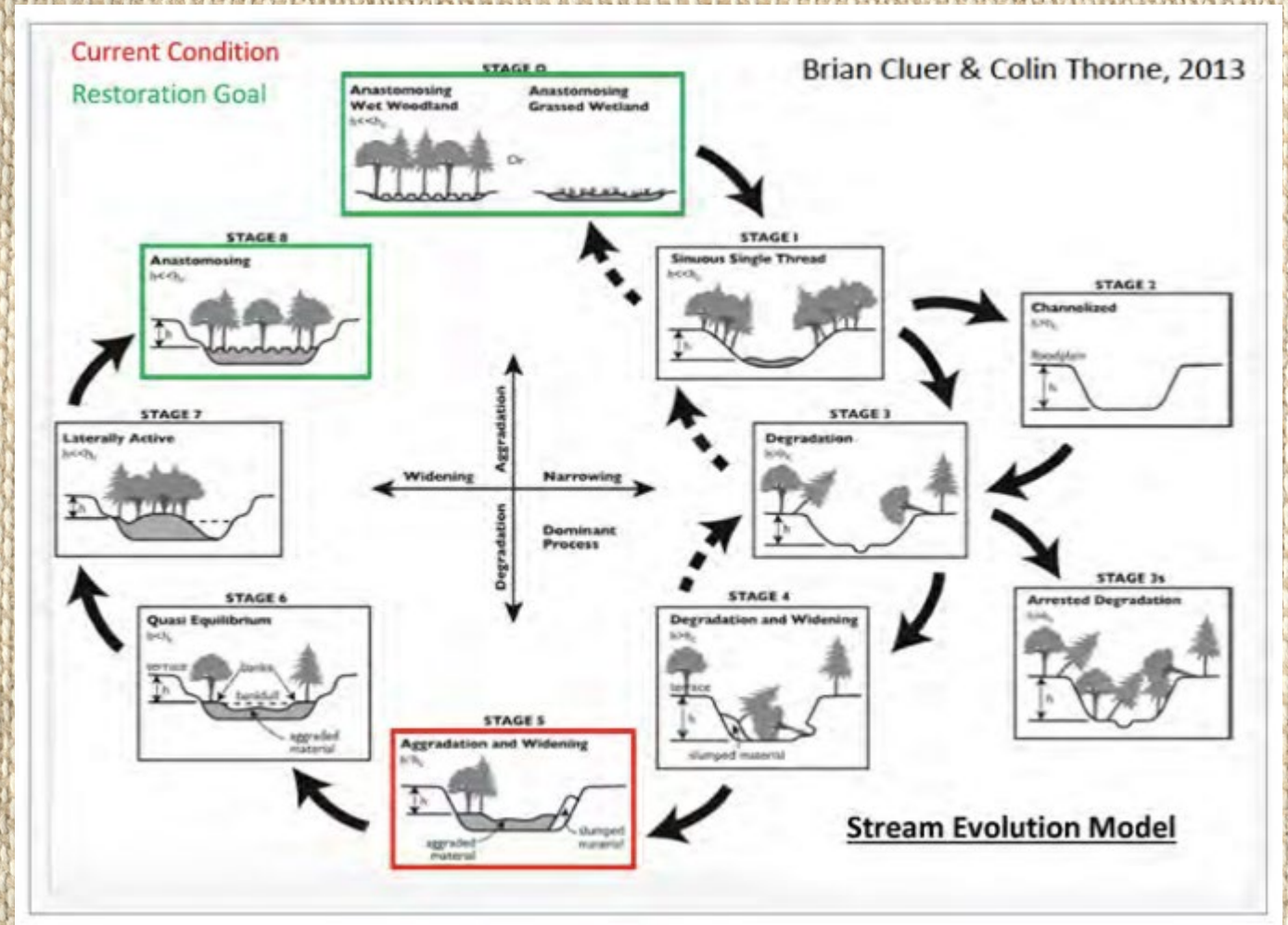
Background

Current Conditions

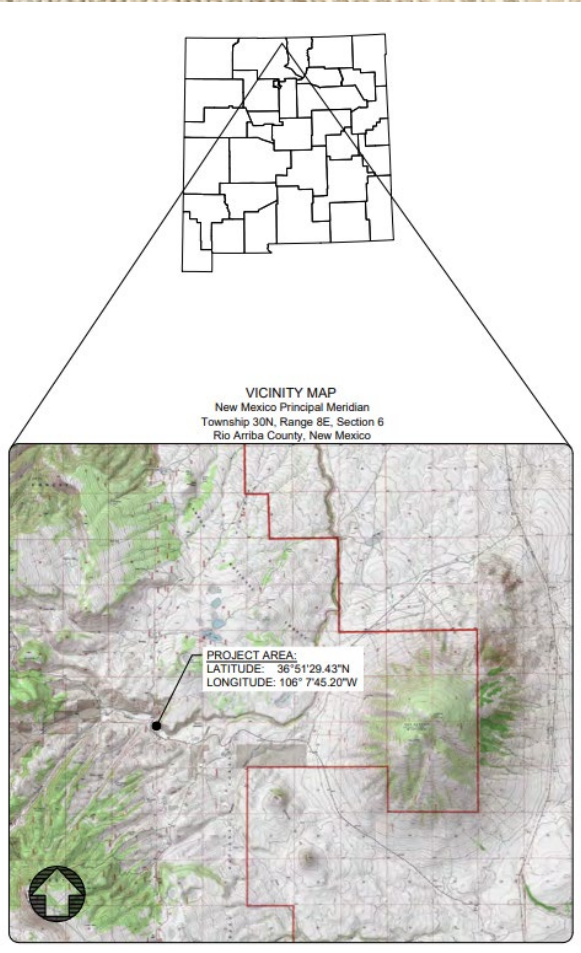
Proposed Actions

Landscape Benefits

Wildlife Benefits



# Location



# Background

1973

Stewart Meadows is acquired by the Carson NF



# Background

1973

Stewart Meadows is acquired by the Carson NF

1980's

Restoration of 350 acres of wetlands



# Background

1973

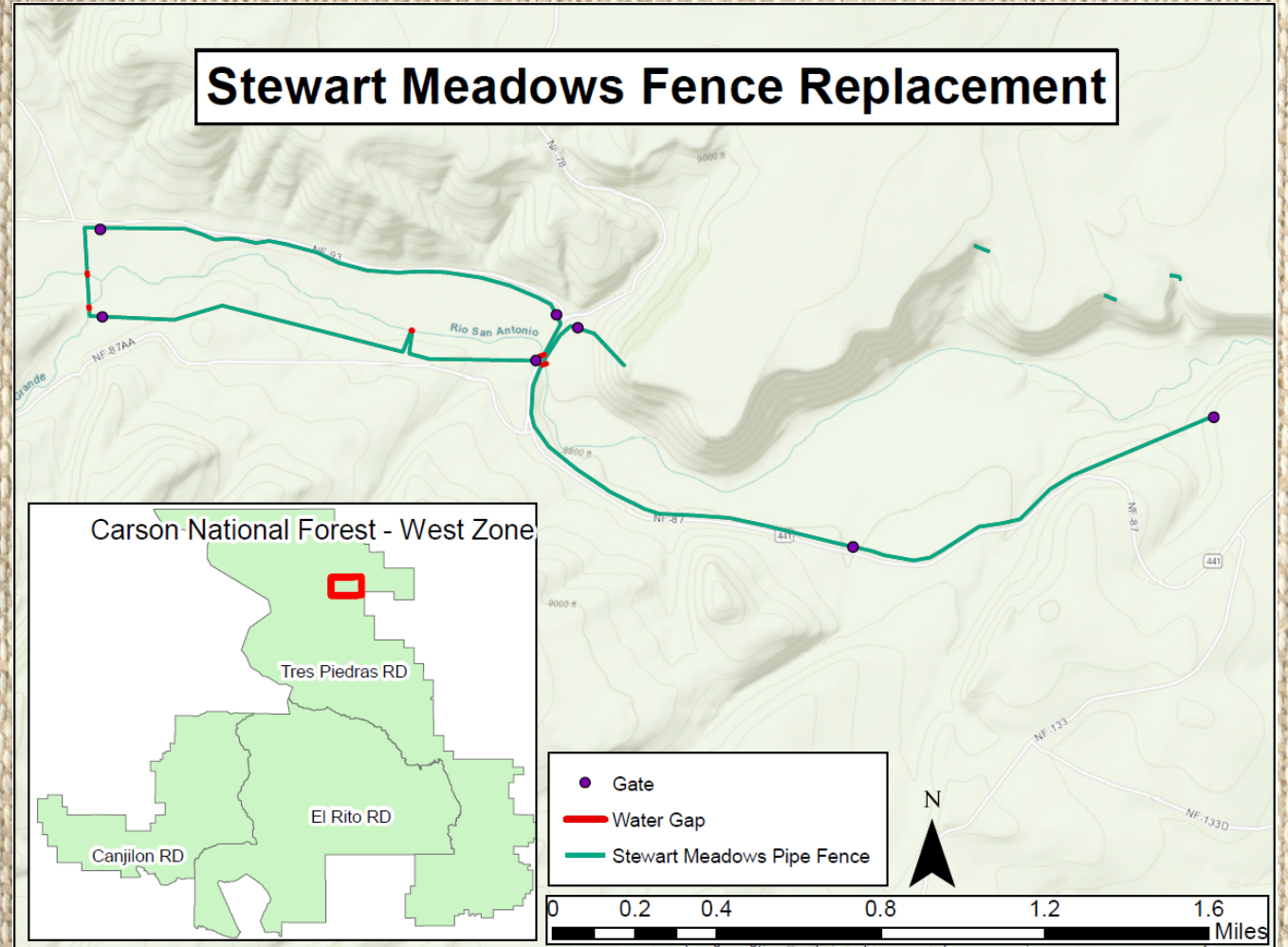
Stewart Meadows is acquired by the Carson NF

1980's

Restoration of 350 acres of wetlands

2021

6 miles of dilapidated wood fence replaced with pipe and cable fence using HSP funds





# Background

1973

Stewart Meadows is acquired by the Carson NF

1980's

Restoration of 350 acres of wetlands

2021

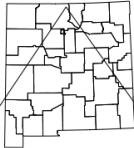
6 miles of dilapidated wood fence replaced with pipe and cable fence using HSP funds

2022

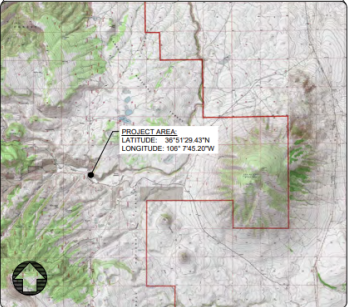
Conceptual engineering designs created for Phases 1 and 2

## Stewart Meadows Habitat Assessment & Conceptual Design


Rio Arriba County, New Mexico



VICINITY MAP  
New Mexico Principal Meridian  
Township 30N, Range 4E, Section 6  
Rio Arriba County, New Mexico



PROJECT AREA  
LATITUDE: 36°51'29.43"N  
LONGITUDE: 107°7'43.20"W



Rio San Antonio

**SHEET INDEX**

SHEET NUMBER	DRAWING NUMBER	DESCRIPTION
1	CVR01	Cover Sheet
2	AUS01	Upstream Project Area: Assessment Overview
3	AUS02	Upstream Project Area: Assessment Summary
4	AUS03	Upstream Project Area: Restoration Potential
5	AUS04	Upstream Project Area 1: Assessment Map & Photo Points
6	AUS05	Upstream Project Area 1: Additional Assessment Information
7	AUS06	Upstream Project Area 2: Assessment Map & Photo Points
8	AUS07	Upstream Project Area 2: Additional Assessment Information
9	AD001	Downstream Project Area: Assessment Overview
10	AD002	Downstream Project Area: Assessment Summary
11	AD003	Downstream Project Area: Restoration Potential
12	AD004	Downstream Project Area 1: Assessment Map & Photo Points
13	AD005	Downstream Project Area 1: Additional Assessment Information
14	AD006	Downstream Project Area 2: Assessment Map & Photo Points
15	AD007	Downstream Project Area 2: Additional Assessment Information
16	CPT01	Conceptual Plan Overview
17	CPT02	Conceptual Plan: Upstream Project Area
18	CPT03	Conceptual Plan: Downstream Project Area 1
19	CPT04	Conceptual Plan: Downstream Project Area 2
20	CPT05	Conceptual Plan: Downstream Project Area 3
21	CPT06	Conceptual Plan: Downstream Project Area 4

**CLIENT:**  
New Mexico Department of Game & Fish  
1 Wildlife Way  
Santa Fe, NM 87507  
(505) 476-8000

**RESTORATION DESIGN SPECIALIST & PROJECT PRIME:**  
Wildland Alliance  
1000 Cordova Place, #832  
Santa Fe, New Mexico  
(505) 577-6625

**CIVIL/ECOLOGICAL ENGINEERING:**  
Oxbow Ecological Engineering, LLC  
3481 S. Gilmer Street Drive  
Flagstaff, AZ 86005  
(928) 266-6162

**PROJECT NAME:**  
Stewart Meadows  
Habitat Assessment & Conceptual Design

**LOCATION:**  
Stewart Meadows  
Rio Arriba County, NM

**PROJECT NUMBER:**  
NA

**PROJECT PHASE:**  
70% Design Plans

**CLIENT:**  
New Mexico Department of Game & Fish  
1 Wildlife Way  
Santa Fe, NM 87507  
(505) 476-8000

**DESIGNED BY:** GFC  
**DESIGNED BY:** CS & GFC  
**REVIEWED BY:** CS & GFC

**PRELIMINARY  
NOT FOR  
CONSTRUCTION**

**UNAUTHORIZED CHANGES & USES:**  
The engineer preparing these plans will not be responsible for, or liable for, unauthorized changes to or uses of these plans. All changes must be in writing and must be approved by the engineer of record.

**PLAN REDUCTIONS:**  
The plans have been created on ANSI B (11 IN. x 17 IN.) sheets. For reductions, refer to graphic scale. The plans have been created for full color plotting. Any set of the plans that is not plotted in full color shall not be considered adequate. Warning information may be used on copying and/or gray scale plotting.

**811** See what's below. Call before you dig.

**DATE:** 06/29/2022 **DEE PROJECT #:** NM-014-1

**DRAWING #:** CVR01 **SHEET #:** 1 **OF 21**

# Background

1973

Stewart Meadows is acquired by the Carson NF

1980's

Restoration of 350 acres of wetlands

2021

6 miles of dilapidated wood fence replaced with pipe and cable fence using HSP funds

2022

Conceptual engineering designs created for Phases 1 and 2

2024

Pipe fence maintenance and new water gap



# Background

1973

Stewart Meadows is acquired by the Carson NF

1980's

Restoration of 350 acres of wetlands

2021

6 miles of dilapidated wood fence replaced with pipe and cable fence using HSP funds

2022

Conceptual engineering designs created for Phases 1 and 2

2024


Pipe fence maintenance and new water gap




2025

Phase 3 conceptual engineering designs funded

## Stewart Meadows Habitat Assessment & Conceptual Design

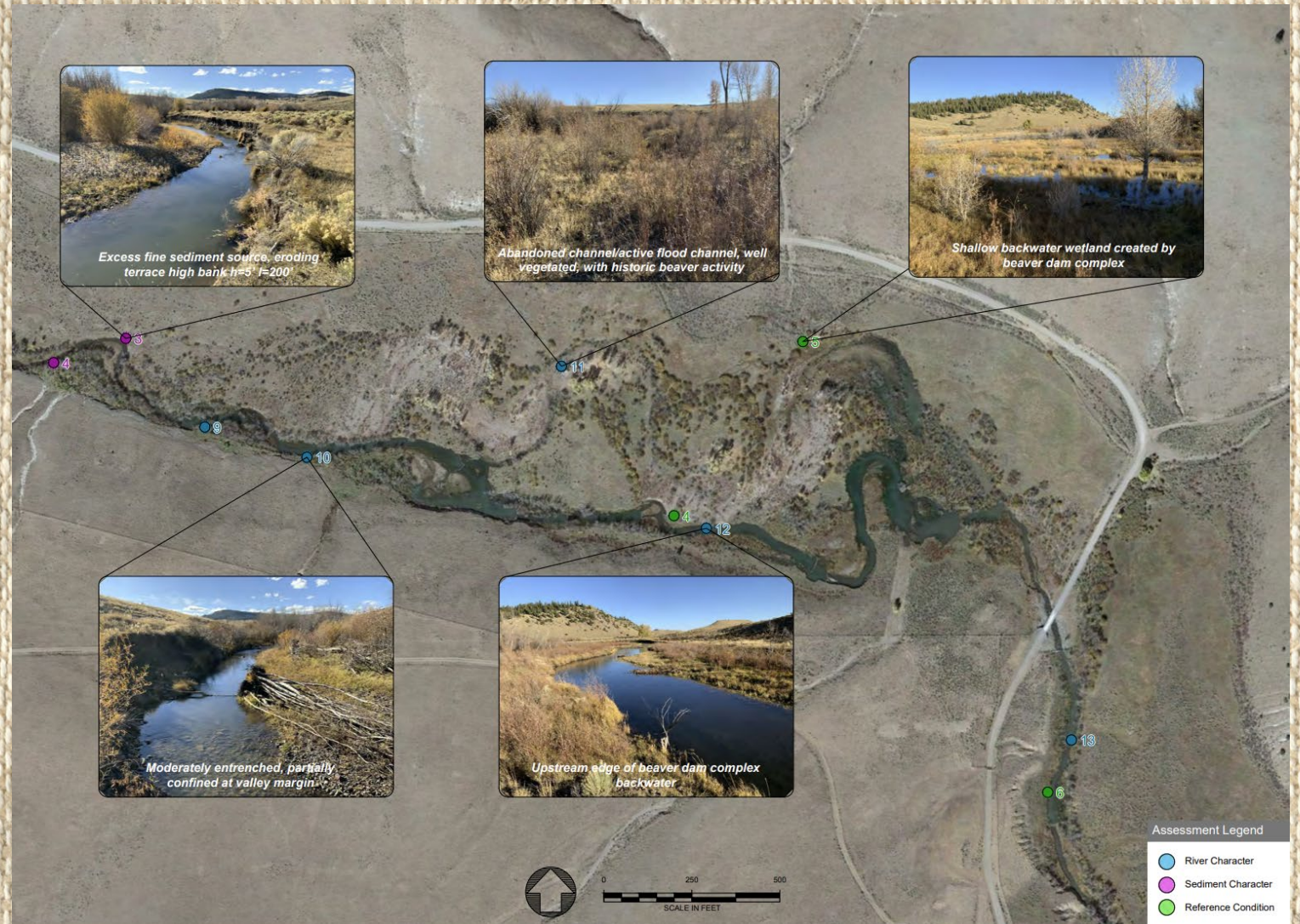
Rio Arriba County, New Mexico



		
PROJECT NAME: Stewart Meadows Habitat Assessment & Conceptual Design		
LOCATION: Stewart Meadows Rio Arriba County, NM		
PROJECT NUMBER: NA		
PROJECT PHASE: 70% Design Plans		
CLIENT: New Mexico Department of Game & Fish 1 Wildlife Way Santa Fe, NM 87507 (505) 475-8500		
		
DRAWN BY: GFC DESIGNED BY: CS & GFC REVIEWED BY: CS & GFC		
<b>PRELIMINARY NOT FOR CONSTRUCTION</b>		
<small>UNAUTHORIZED CHANGES &amp; USES: The engineer preparing these plans will not be responsible for, or liable for, unauthorized changes to or uses of these plans. All changes must be in writing and must be approved by the engineer of record.</small>		
<small>PLAN REPRODUCTION: The plans have been created on ANSI B (11 IN. x 17 IN.) sheets. For reductions, refer to graphic scale. The plans have been created for full color plotting. Any set of the plans that is not plotted in full color shall not be considered adequate. Warning: Information may be lost in copying and/or gray scale plotting.</small>		
 <small>See what's below. Call before you dig.</small>		
DATE: 06/29/2022	DEE PROJECT #: NM-014-1	
DRAWING: Cover Sheet		
DRAWING #: CVR01	SHEET #: 1 OF 21	REVISION #: A

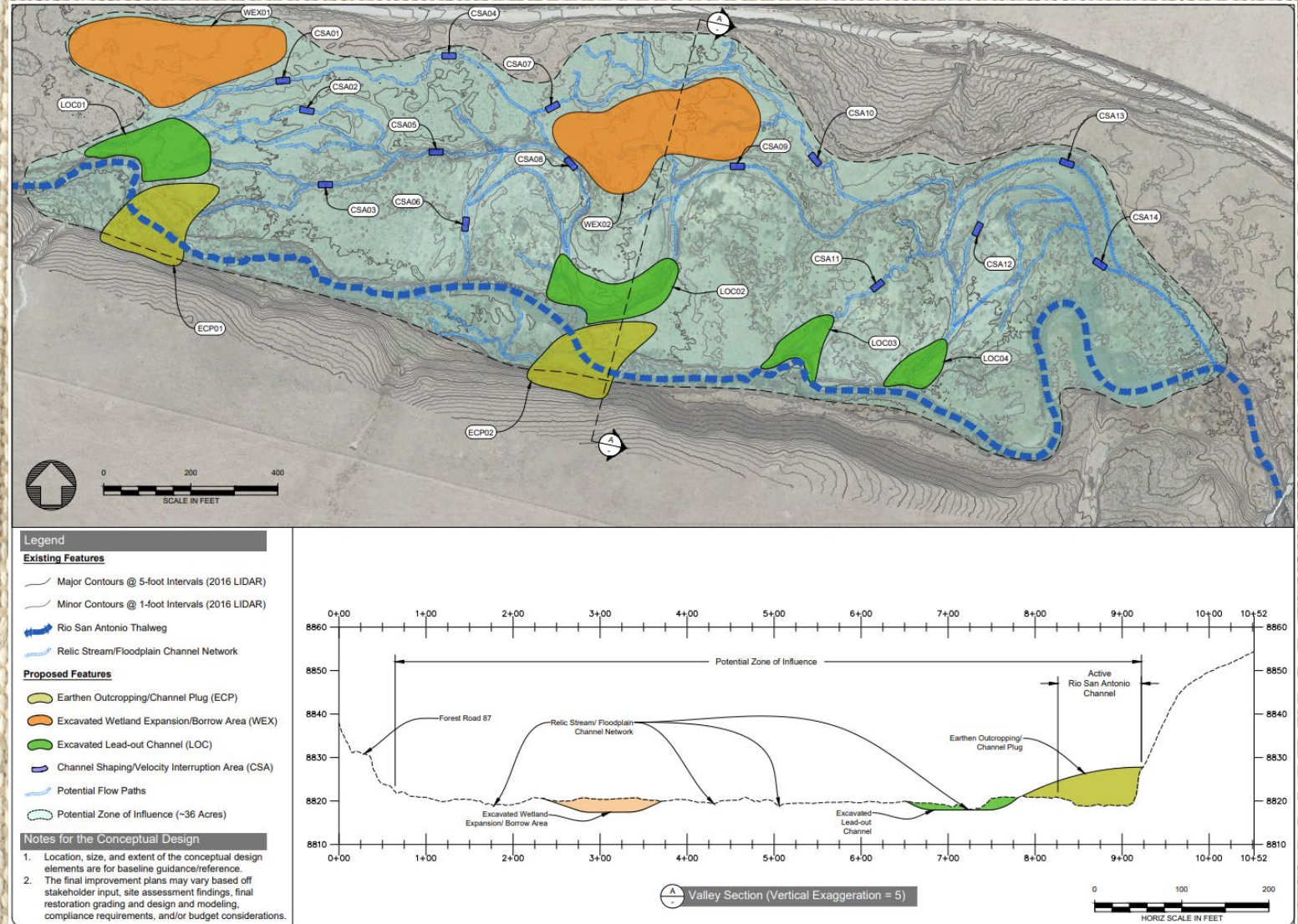
# Current Conditions

- High sediment loads
- Slightly to moderately entrenched river channel
- Critical sediment buffer for downstream reaches of Rio San Antonio
- Isolation from historic floodplain, channel connected wetlands, and backwater habitat
- Risk of bank erosion and downcutting
- Active beaver population



# Proposed Actions

- Implement Stewart Meadows Phase 1 (upstream reach)
- Encompasses 1 mile of the Rio San Antonio
- Construction of earthen channel plugs to redirect water flow
- Construction of lead-out channels to reconnect the historic floodplain
- Channel shaping to spread out runoff water
- Creation of shallow burrow areas to enhance off channel wetlands



# Landscape Benefits

- Reconnect historic floodplain with channels, wetlands, and backwater habitat
- Redistribute flood energy and sediment across valley bottom
- Increase overbank flow at lower flood stages
- Accelerate floodplain development
- Improve water quality by increasing stream shading and reducing downstream sediment loads
- Increase growth and footprint of riparian vegetation



# Wildlife Benefits

- Increases quality and quantity of waterfowl habitat
- Increased resiliency of water for ungulate species
- Increased browse and cover for deer and elk
- Expands opportunity for beaver population
- Increased water quality downstream to benefit many fish and wildlife species.



# Project Summary

Stewart Meadows Phase 1 continues a legacy of restoration work in this areas made possible through diverse partnerships among conservation minded groups

All compliance, permitting, and design work is completed.

Spring 2026 is the expected start date for implementation.

Implementation will cost an estimated \$435,000



Project Name:

---

Project relation to CAC advice or priorities:

---

Project Specific Details:

---

Historical Data:

---

Itemized Use of Funds:

---

Comprehensive Project Analysis:

Google Earth Link

---

Monitoring Plan/ Strategy:

---

Project Emphasis Species:

---

