

Santa Fe National Forest Aquatic Organism Passage Project

Rito Peñas Negras AOP



Rio Cebolla AOP



Fisheries Division



Project Contacts



Brendon Sucher
Fisheries Biologist
Santa Fe National Forest
Brendon.Sucher@usda.gov



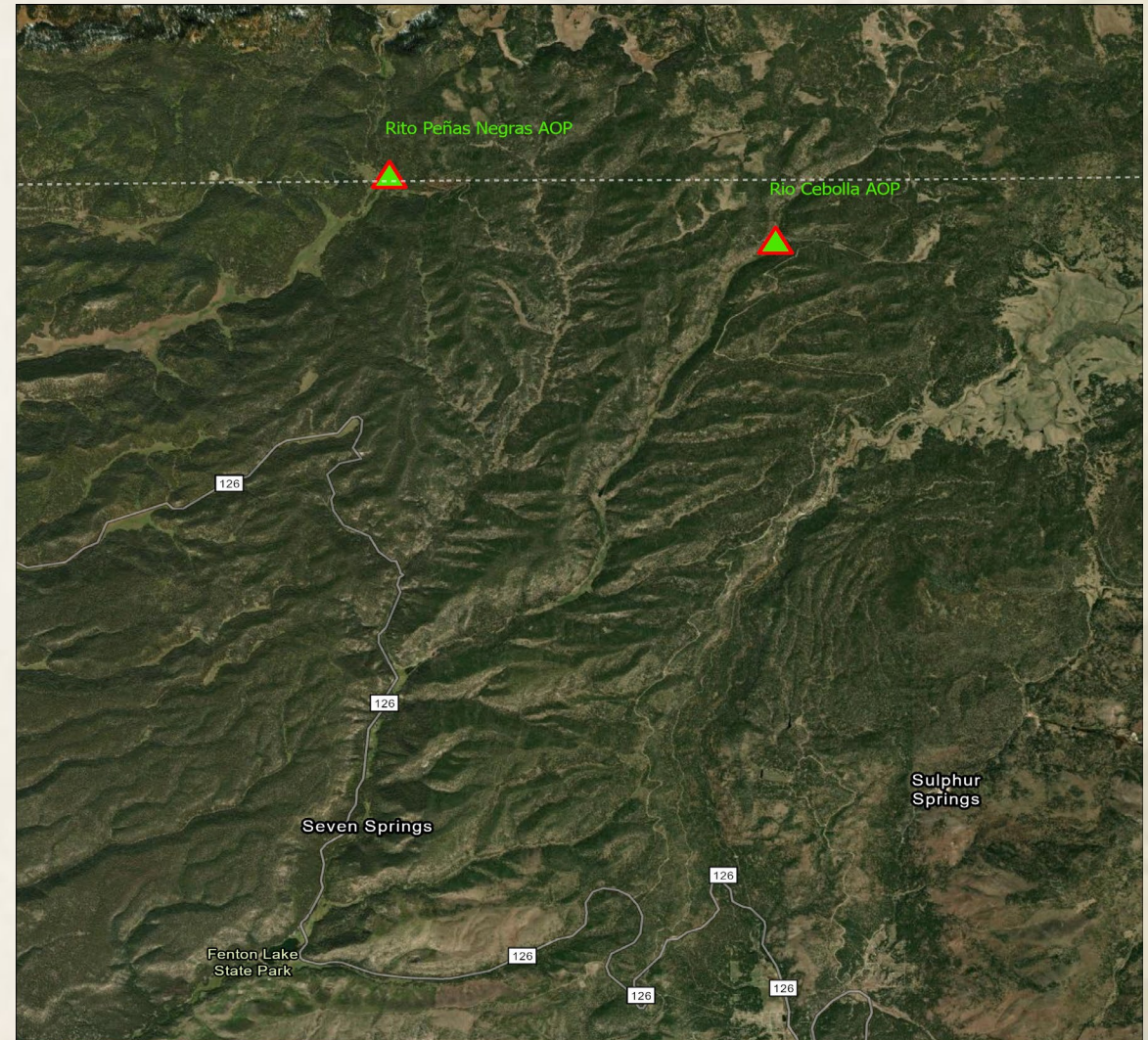
Corey Webster
Fish Habitat Coordinator
New Mexico Department of Game and Fish
Corey.Webster@dgf.nm.gov

Fisheries Division

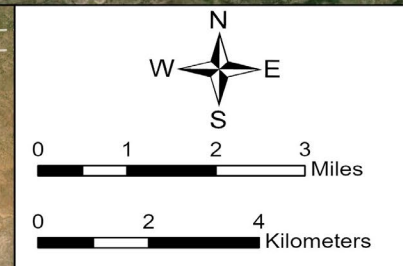


Project Location

- Santa Fe National Forest, Cuba Ranger District, Jemez Ranger District
- Sandoval and Rio Arriba Counties
- Rito Peñas Negras-(36.00094, -106.70817)
- Rio Cebolla- (35.99102, -106.6442)



Fisheries Division



Project Background

Rito Peñas Negras

- Heavy erosion
- Culvert head is separated from body
- Creek runs around and underneath culvert
- Aquatic organisms can't pass through



Project Background Cont.

Rio Cebolla

- Current culverts are dilapidated
- Fish can't pass through due to design
- Core conservation population for Rio Grande Cutthroat Trout with >99% purity
- Popular area for public angling



Project Purpose

- **Mimicking Natural Channels:**
 - Replicate the physical characteristics of the natural stream within the crossing structure, including channel dimensions, substrate, and bed material.
- **Promote fish passage:**
 - By replicating natural stream conditions, stream simulation aims to ensure that fish and other aquatic organisms can easily navigate through the structure.
- **Restoring Ecological Processes:**
 - Stream simulation strives to restore ecological processes, such as sediment transport, debris passage, and hydraulic conditions, within the passage structure.
- **Reducing Maintenance Needs:**
 - Stream simulations are designed to have larger sizes, which decreases the likelihood of plugging and overtopping, ultimately reducing long-term maintenance needs.



Fisheries Division



Project Summary- Estimated Cost \$700,000

- Designs- \$65,000
- Construction- \$635,000



Fisheries Div