

**Rio Grande Cutthroat Trout**  
**(*Oncorhynchus clarkii virginalis*)**  
**Conservation Strategy**



**January 23, 2024**

## Table of Contents

I. BACKGROUND.....	1
Summary.....	1
Rio Grande Cutthroat Trout Range-wide Conservation Team.....	1
Purpose.....	2
Past and Existing Conservation Agreements.....	2
Duration of the Conservation Strategy.....	2
II. RIO GRANDE CUTTHROAT TROUT INFORMATION.....	3
Taxonomy.....	3
Historical Distribution.....	3
Current Distribution.....	6
Habitat and Life History.....	8
Nature and Extent of Threats.....	10
Habitat Loss.....	10
Nonnative species.....	10
Drought.....	11
Fire.....	11
Climate Change.....	12
Disease.....	14
III. CONSERVATION GOALS AND OBJECTIVES.....	15
Goals.....	15
The 3Rs - Resiliency, Representation, and Redundancy.....	15
Resiliency: The ability of the species to withstand stochastic events.....	16
Representation: The ability of a species to adapt to changing environmental conditions.....	17
Redundancy: The ability of a species to withstand catastrophic events.....	17
Probability of Persistence Model.....	18
Objectives.....	18
IV. CONSERVATION EFFORTS TO DATE.....	19
Interagency Coordination.....	19
Restoration in New Mexico.....	19
Restoration in Colorado.....	20
Public Education and Outreach.....	20
Summary.....	21
V. CONSERVATION MEASURES.....	22
VI. MONITORING AND ADAPTIVE MANAGEMENT.....	28
LITERATURE CITED.....	29
APPENDIX A. Conservation Actions for RGCT since 2000 by Conservation Team.....	36
APPENDIX B. Conservation Actions to be Implemented under the Conservation Strategy.....	48
APPENDIX C. Progress toward 10-year goals identified in the 2013 Conservation Strategy.....	55

APPENDIX D. Status of Current Conservation Populations of Rio Grande cutthroat trout..... 61  
APPENDIX E. Draft Habitat Monitoring Protocol..... 65  
APPENDIX F. Fire and Drought Contingency Plans..... 66

**Citation**

RGCT Conservation Team. 2024. Rio Grande cutthroat trout (*Oncorhynchus clarkii virginialis*) Conservation Strategy. New Mexico Department of Game and Fish, Santa Fe, NM.

# RIO GRANDE CUTTHROAT TROUT CONSERVATION STRATEGY

---

## I. BACKGROUND

### Summary

Cooperative efforts to manage and conserve Rio Grande cutthroat trout have been continuing since 2003. This Conservation Strategy is a voluntary recommitment to implement these ongoing actions that will provide for the long-term viability of the Rio Grande cutthroat trout (*Oncorhynchus clarkii virginalis*) by maintaining sufficient secure populations and range-wide genetic integrity of the species, while recognizing existing land uses, resource uses (including angling and other recreational opportunities), Tribal sovereignty, and private property rights. The purpose of this document is to provide specific direction that, when implemented, will conserve this species and minimize or remove the threats to its viability. This will be accomplished through an adaptive management process of implementing, monitoring and adjusting conservation measures by the Rio Grande Cutthroat Trout Conservation Team (Conservation Team).

### Rio Grande Cutthroat Trout Range-wide Conservation Team

The Conservation Team is a working group of agency representatives charged with the management and protection of the Rio Grande cutthroat trout, and it includes members of the public who have committed their time to actively participate in developing this Conservation Strategy. The Conservation Team was established in 2003, when the Conservation Agreement for the Range-wide Preservation and Management of the Rio Grande Cutthroat Trout (2003 Conservation Agreement) was first signed. The Team is comprised of individuals from agencies, tribes, and private organizations. While the Team has no authority to mandate agency actions, team members develop range-wide priorities, review annual work plans, coordinate agency actions, and update and maintain a status assessment database.

Participants in the Rio Grande Cutthroat Trout Range-wide Conservation Team (\* indicates the signatories to the 2023 Conservation Agreement):

- Colorado Parks and Wildlife (CPW)\*
- New Mexico Department of Game and Fish (NMDGF)\*
- U.S. Forest Service (USFS)\*
- U.S. Fish and Wildlife Service (FWS)\*
- Jicarilla Apache Nation\*
- Taos Pueblo\*
- National Park Service (NPS)\*
- Bureau of Land Management (BLM)\*
- Coalition of Colorado Counties\*
- Turner Enterprises, Inc.\*
- Trout Unlimited

## **Purpose**

The Rio Grande Cutthroat Trout Conservation Team (Conservation Team) was formed to assure the long-term viability of Rio Grande cutthroat trout throughout its historical range and reduce the likelihood that Rio Grande cutthroat trout would require listing under the Endangered Species Act (ESA) of 1973, as amended. This Conservation Strategy was developed in accordance with the Conservation Agreement for Rio Grande Cutthroat Trout in the States of Colorado and New Mexico (RGCT Conservation Team 2023) (Conservation Agreement) and is intended to remove and minimize threats to the species and guide restoration efforts for the maximum benefit of the trout. Conservation and management strategies outlined in this Conservation Strategy are designed to meet the guidelines set forth by the U.S. Fish and Wildlife Service<sup>1</sup> in their Policy for Evaluation of Conservation Efforts (PECE) standards. Participants in this Conservation Strategy agree to implement the conservation and monitoring actions specified herein. Commitment to implementation of this Conservation Strategy<sup>2</sup> will be documented through a revision and signing of an updated Conservation Agreement.

The information contained in this Conservation Strategy is intended to serve as a set of guidelines for state and Federal agencies to conserve Rio Grande cutthroat trout. It is neither a National Environmental Policy Act (NEPA) decision document, nor a federal or state recovery plan. Any future federal actions based on this Conservation Strategy will include NEPA compliance and compliance with other laws and regulation as needed.

## **Past and Existing Conservation Agreements**

This Conservation Strategy is the implementation document for the Conservation Agreement for Rio Grande Cutthroat Trout that was signed by the parties in 2003, and renewed in 2009, 2013, and 2023. The Conservation Agreement is a collaborative and cooperative effort among state, federal, and tribal resource agencies. The Conservation Agreement was designed to provide a framework for the long-term conservation of Rio Grande cutthroat trout by guiding the implementation of actions that reduce threats to the subspecies. This Conservation Strategy will be part of a renewed Conservation Agreement for the Rio Grande Cutthroat Trout. Additional information regarding authorities, governing documents, and policies may be found in the accompanying Conservation Agreement.

## **Duration of the Conservation Strategy**

This Conservation Strategy was written to guide conservation actions for the next 10 years, although it is expected that participants will continue working on conservation of the species beyond that timeframe. The Conservation Strategy was also designed and written to be a dynamic document that can be adapted and updated to incorporate new information regarding local and regional needs of the Rio Grande cutthroat trout populations and habitats. Minor modifications may be made to the Strategy so long as they do not change the Goals and

---

<sup>1</sup> Participation by FWS in this Conservation Strategy and the related Conservation Agreement does not constitute a PECE review of any conservation efforts included in this Strategy, nor does it not predetermine any subsequent status review and listing determination by FWS under the ESA.

<sup>2</sup> Compliance with this strategy by agencies, private enterprises, and private individuals is strictly voluntary.

Objectives. This will allow the Conservation Team to respond to changing conditions on the ground, taking advantage of conservation opportunities that may arise. The Conservation Team will annually re-evaluate the status of Rio Grande cutthroat trout populations and habitats across their range and review progress of the strategies listed in the Conservation Strategy.

Annually, the parties involved will review the Conservation Strategy and its effectiveness to determine whether it should be revised and to update the annual operating plan (see **Annual Coordination Meeting** below). By the tenth year, the Conservation Strategy must be reviewed and either modified, renewed, or terminated.

## **II. RIO GRANDE CUTTHROAT TROUT INFORMATION**

### **Taxonomy**

The Rio Grande cutthroat trout, one of 14 subspecies of cutthroat trout, is native to the Rio Grande, Pecos River, and Canadian River basins in New Mexico and Colorado (Sublette et al. 1990; Behnke 2002).

### **Historical Distribution**

The historical distribution of Rio Grande cutthroat trout is not known with certainty. In general, it is assumed that Rio Grande cutthroat trout occupied all streams capable of supporting<sup>3</sup> trout in the Rio Grande, Pecos River, and Canadian River basins (Alves et al. 2008) (Figure 1). The Pecos River is a tributary of the Rio Grande, so a historical connection between the two basins likely existed. Although no early museum specimens document its occurrence in the headwaters of the Canadian River, it is very likely that Rio Grande cutthroat trout inhabited this river as well (Behnke 2002). The Canadian River, which is a tributary to the Mississippi River, has no connection with the Rio Grande. It is possible that through headwater capture (a tributary from one watershed joins with a tributary from another) there may have been natural migration of fish between the Pecos and Canadian headwater streams (Behnke 2002). The Rio Grande cutthroat trout in the Pecos and Canadian River basins have long been isolated from those in the Rio Grande basin and are considered to be moderately genetically differentiated from those in the Rio Grande basin (Pritchard et al. 2007, Pritchard et al. 2008). Rio Grande cutthroat trout populations occur throughout the headwaters of the Rio Grande basin.

There is some evidence that Rio Grande cutthroat trout may have occurred in Texas (Behnke 1967; Garrett and Matlock 1991) and Mexico (Behnke 1967). However, no specimens were collected to document their presence in these locations with certainty. Their potential occupancy in these locations is based on fluvial connections and on historical articles that describe the presence of trout that could have been Rio Grande cutthroat trout.

The range of the Rio Grande cutthroat has been divided by basins into five geographic management units (GMUs) to bring a greater resolution to descriptions of populations, habitat distribution, related maintenance, and restoration work. These GMUs reflect the hydrologic divisions of the Rio Grande cutthroat trout historic range by river drainage. They do not

---

<sup>3</sup> Streams capable of supporting trout are those at higher elevations with lower water temperatures.

necessarily reflect important differences in genetic variability in the subspecies based on geography or adaptation to specific environments, although fish in the Pecos and Canadian GMUs do exhibit some genetic differentiation (Pritchard et al. 2008). Additionally, Rio Grande cutthroat trout now occur in the Caballo GMU as a result of the restoration of Las Animas Creek in 2018. The Conservation Team is managing the GMUs as separate units to maintain genetic and ecological diversity within the subspecies where it exists and to ensure representation and redundancy<sup>4</sup> of the subspecies across its historical range.

---

<sup>4</sup> For explanations of representation and redundancy, see section **III. Conservation Goals and Objectives** below.

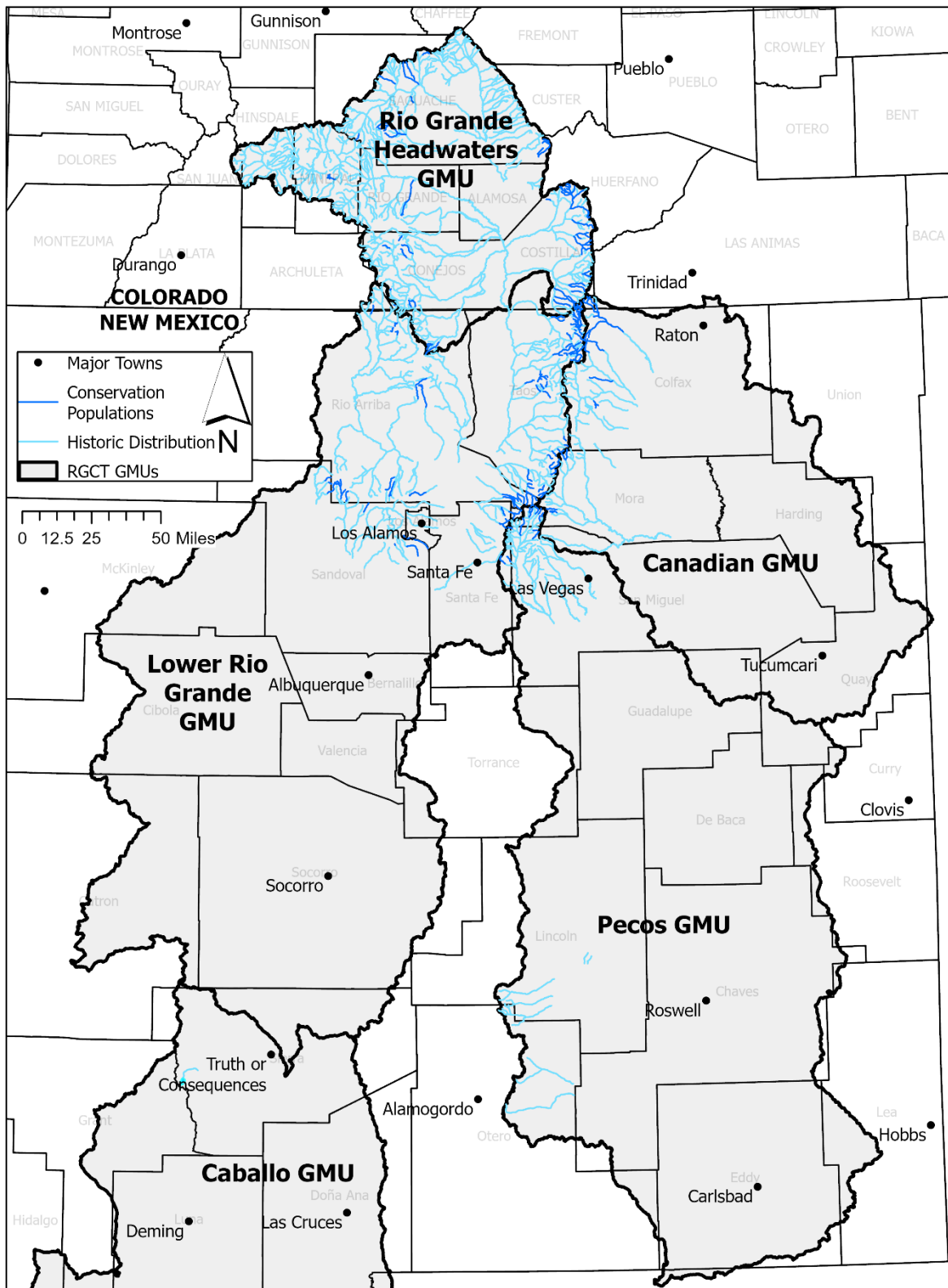


Figure 1. Presumed historical and current ranges of conservation populations of Rio Grande cutthroat trout.



## Current Distribution

Rio Grande cutthroat trout are not known to currently occur in Texas or Mexico. Conservation populations<sup>5</sup> of the subspecies are currently concentrated in elevations from 2,743–3048 m (9,000–10,000 ft) (Alves et al. 2008). Conservation populations of Rio Grande cutthroat trout occupy approximately 11.6 percent of their presumed historical habitat (2022 database; Figure 1). Currently, the southernmost distribution of conservation populations occurs in the Caballo GMU in Las Animas Creek, Sierra County, New Mexico. Several recreation populations<sup>6</sup> occur in lakes and streams in New Mexico and Colorado. Since 2006 occupied stream kilometers, percent of historically occupied habitat, mean patch length, and occupied lake area has increased (Table 1).

Conservation populations are managed by the state agencies and tribal entities. Many Rio Grande cutthroat trout conservation populations currently occupy lands administered by Federal agencies. Of the total 1,243 km (772 mi) of occupied habitat, 719 km (447 mi) (58 percent) are under Federal jurisdiction, with the majority (52 percent) occurring within National Forests (2022 database). Rio Grande cutthroat trout occupy 4 km (2.5 mi) of land administered by BLM, 55 km (34.2 mi) managed by NPS, and 504 km (313.2 mi) that are privately owned.

The Rio Grande Cutthroat Trout Conservation Team completed a range-wide status assessment (Bakevich et al. 2019) concerning the Rio Grande cutthroat trout. This status assessment summarized information provided by fisheries professionals from Colorado and New Mexico having specific knowledge of Rio Grande cutthroat trout. Additionally, all of the data on Rio Grande cutthroat trout collected yearly by these professionals are entered into a comprehensive database (2022 database). According to these analyses, there are currently approximately 125 Rio Grande cutthroat trout conservation populations distributed in high elevation streams of New Mexico and Colorado (2022 database; Table 2). Of these current conservation populations, 48 are considered secure populations<sup>7</sup>. The Lower Rio Grande GMU has the most conservation populations of the five GMUs. The Caballo GMU currently has one; the only known historical location for the species.

---

<sup>5</sup> “Conservation populations” of Rio Grande cutthroat trout are those with 10 percent or less introgression (hybridization) from nonnative trout. “Populations” of Rio Grande cutthroat trout are one or more streams containing the subspecies that are isolated in some way from other occupied streams. Sometimes a population is one stream; sometimes it is multiple connected streams.

<sup>6</sup> “Recreation populations” are defined as Rio Grande cutthroat trout populations managed primarily for sport fishing. Recreation populations are not included as conservation populations. Recreation populations raise public awareness and interest in the subspecies and are generally located in areas that are poor candidates for restoration as a conservation population, either due to lack of habitat to maintain the population in perpetuity, an inability to exclude nonnative trout, or societal factors.

<sup>7</sup> “Secure populations” are populations protected from encroachment by nonnative trout, usually by a downstream migration barrier (either natural or manmade).

Table 1. Status of RGCT populations range-wide and by state in 2006 and 2022. Conservation populations crossing state lines are duplicated in each state but do not affect the range-wide total number of conservation populations.

	<b>2006</b>	<b>2022</b>	<b>% Change</b>
<b>Range-wide</b>			
Number of conservation populations	121	125	+ 3.2
Current distribution (km)	1124	1243	+ 9.6
Historic distribution (km)	10,718	10,720	0.0
Percent of historic distribution	10.5	11.6	+ 9.5
Mean patch length (km)	9.3	9.6	+ 3.1
Lake area occupied (km <sup>2</sup> )	2.20	3.52	+ 37.5
<b>Colorado</b>			
Number of conservation populations	42	44	+ 4.5
Current distribution (km)	486	483	- 0.6
Historic distribution (km)	5,197	5,193	- 0.1
Percent of historic distribution	9.4	9.3	- 1.1
Mean patch length (km)	11.6	11.0	- 5.5
Lake area occupied (km <sup>2</sup> )	2.02	2.02	0.0
<b>New Mexico</b>			
Number of conservation populations	84	85	+ 1.1
Current distribution (km)	638	760	+ 16.1
Historic distribution (km)	5,521	5,527	+ 0.1
Percent of historic distribution	11.6	13.8	+ 15.9
Mean patch length (km)	7.6	8.9	+ 14.6
Lake area occupied (km <sup>2</sup> )	0.18	1.50	+ 88.0

Table 2. Distribution of Rio Grande cutthroat trout conservation populations and secure conservation populations (a subset of the conservation populations)<sup>8</sup>.

<b>GMU</b>	<b>Number of Conservation Populations</b>	<b>Current Distribution (km)</b>	<b>Number of Secure Conservation Populations</b>
Caballo	1	3	1
Canadian	11	156	3
Lower Rio Grande	59	560	21
Pecos	11	59	3
Rio Grande Headwaters	43	465	20
<b>Range-wide Total</b>	<b>125</b>	<b>1243</b>	<b>48</b>

### Habitat and Life History

As is true of other subspecies of cutthroat trout, Rio Grande cutthroat trout are primarily found in clear cold streams (Figure 2) but occasionally occur in lacustrine (lake or reservoir) habitats. They spawn as high water flows from snowmelt recede. In New Mexico, this typically occurs from the middle of May to the middle of June (NMDGF 2002). Spawning is believed to be tied to day length, water temperature, and runoff (Sublette et al. 1990; Behnke 2002). The size of mature females ranges from 10.7 to 26 centimeters (4.2 to 10.3 inches (in)) (Stumpff 1998). The number of eggs per female varies greatly depending on the size and age of the fish, and reports on wild fish have ranged from around 100 to over 400 eggs (Cowley 1993; Stumpff 1998).

It is unknown whether Rio Grande cutthroat trout spawn every year or if some portion of the population spawns every other year, as has been recorded for westslope cutthroat trout (*O. c. lewisi*) (McIntyre and Rieman 1995). Likewise, while it is assumed that females mature at age 3, they may not spawn until age 4 or 5 as seen in westslope cutthroat trout (McIntyre and Rieman 1995). Sex ratio also is unknown with certainty, but based on field data, a ratio skewed towards more males might be expected (Pritchard and Cowley 2006). Although Yellowstone (*O. c. bouvieri*) (Gresswell 1995), Bonneville (*O. c. utah*) (Schrank and Rahel 2004), and westslope (Bjornn and Mallet 1964; McIntyre and Rieman 1995) cutthroat trout subspecies are known to have a migratory life history phase, it is not known if Rio Grande cutthroat trout historically had a migratory form when there was greater connectivity among watersheds, but it does not now.

<sup>8</sup> Information on conservation populations in this table is based on the 2022 database, which is populated with data from 2021. The Conservation Team is aware that since 2021, some populations may have been extirpated due to the effects of wildfire, while other populations have been restored. In order to input data accurately and allow for review, there is a significant time lag before an updated database is available. The 2022 database represents the best information available to the team.



Figure 2. Rio Grande cutthroat trout habitat, Wolf Creek, Colorado.  
Photo Courtesy of Colorado Parks and Wildlife.

---

Most cutthroat trout are opportunistic feeders, eating both aquatic invertebrates and terrestrial insects that fall into the water (Sublette et al. 1990). Other subspecies of cutthroat trout become more piscivorous (fish eating) as they mature (Moyle 1976; Sublette et al. 1990) and cutthroat trout living in lakes will prey heavily on other species of fish (Echo 1954). It is possible that native cyprinids (i.e., chubs, minnows, and dace) and suckers were once important prey items for Rio Grande cutthroat trout; for example, predation of Rio Grande sucker by Rio Grande cutthroat trout has been observed in Medano Creek in Great Sand Dunes National Park in Colorado (F. Bunch, Great Sand Dunes National Park, pers. comm.). Growth of cutthroat trout varies with water temperature and availability of food.

Typical of trout, Rio Grande cutthroat trout require several types of habitat for survival: spawning habitat, nursery or rearing habitat, adult habitat, and refugium (microhabitats providing spatial or temporal protection from disturbances) (Keppel et al. 2012). Spawning habitat consists of clean gravel (little or no fine sediment present) that ranges from 6 to 40 millimeters (mm) (0.24-1.6 in) in diameter (NMDGF 2002). Nursery habitat is usually at the stream margins where water velocity is low and water temperature is slightly warmer. Harig and Fausch (2002) found that water temperature may play a critical role in the life history of age 0 cutthroat trout (juvenile fish less than 1 year old). Streams with mean daily temperature in July of less than 7.8 degrees Celsius (°C) (46 degrees Fahrenheit (°F)) may not have successful recruitment (survival of individuals to sexual maturity and joining the reproductive population) or reproduction in most years. Adult habitat consists of pools with cover and riffles for food production and foraging. The primary form of refugium habitat is deep pools that do not freeze in the winter and do not dry in the summer or during periods of drought.

## Nature and Extent of Threats

The following discussion includes primary factors that potentially affect Rio Grande cutthroat trout, and these factors will be addressed by conservation actions identified in this strategy. For further information, please see the most recent status assessment for the species (FWS 2011).

### Habitat Loss

The historical range of Rio Grande cutthroat trout has been greatly reduced over the last 150 years. Populations have been lost because of water diversions, stream drying, dams, habitat degradation, changes in hydrology, hybridization with rainbow trout and other species of cutthroat trout, or competition with brown trout (*Salmo trutta*) and brook trout (*Salvelinus fontinalis*) (Pritchard and Cowley 2006). These changes in environmental conditions have resulted in many historical populations being lost and those that remain being restricted to headwater streams. As described above, conservation populations are now concentrated in streams with elevations from 2,743–3048 m (9,000–10,000 ft) (Alves et al. 2008). These isolated high-elevation streams are subject to extreme and fluctuating environmental conditions including forest fires, freezing, and dewatering (Novinger and Rahel 2003). In addition, headwater mountain streams often lack critical resources such as deep pools (Harig and Fausch 2002) and can provide insufficient refuge from catastrophic disturbance (Pritchard and Cowley 2006). The resulting limited habitat resources causes the remaining populations to be lower in overall number of individuals and more at risk of extirpation from extreme events<sup>9</sup>. Since many of the remaining populations are isolated from other populations, once the subspecies is extirpated from a stream it cannot naturally be recolonized.

### Nonnative species

The introduction of nonnative trout is widely recognized as one of the leading causes of historical range reduction in cutthroat trout subspecies (Griffith 1988; Lassuy 1995; Henderson et al. 2000; Dunham et al. 2002; Peterson et al. 2004; Zeigler et al. 2019). Nonnative rainbow, brook, brown and Yellowstone cutthroat trout have been introduced extensively throughout the range of Rio Grande cutthroat trout, and they hybridize with (rainbow trout and other cutthroat trout subspecies), compete with (brook and brown trout), and prey upon (brown trout) Rio Grande cutthroat trout. Fifty-nine of 125 conservation populations (47 percent) have nonnative trout present (2022 database).

The primary threat to Rio Grande cutthroat trout from rainbow trout and other cutthroat trout subspecies is through hybridization and introgression (Rhymer and Simberloff 1996; Muhlfeld et al. 2009). The genetic distinctiveness of Rio Grande cutthroat trout can be lost through hybridization (Allendorf et al. 2004).

---

<sup>9</sup> Longer streams support larger populations of cutthroat trout (Harig and Fausch 2002; Young et al. 2005). Population size is a major determinant of species persistence (Reed et al. 2003). Population persistence decreases as population size decreases (Rieman and McIntyre 1993). In addition, long-term persistence of a population depends on having a sufficient number of individuals to avoid inbreeding depression, which decreases population resilience, and to maintain genetic variation (Franklin 1980; Frankham et al. 2002; Reed 2005).

To minimize the contact of nonnative trout with Rio Grande cutthroat trout, fish barriers have been constructed where natural barriers did not already exist in order to prevent nonnatives from invading from downstream to upstream headwater streams. The existence of fish migration barriers protecting RGCT populations is one of the primary drivers of population persistence into the future (Zeigler et al. 2019).

## Drought

Negative effects from the relatively short-term drought of the early 2000s were documented in 14 Rio Grande cutthroat trout populations in Colorado and New Mexico (Japhet et al. 2007). The number of streams affected by the drought may have been greater because only a fraction of the conservation populations are sampled in any given year. Despite the negative effects of the drought, population persistence and recovery were documented for several of these populations. Although droughts can have immediate impacts on Rio Grande cutthroat trout populations, such as reducing population numbers, they can be resilient enough to survive and return to pre-drought densities after water conditions improve. Rarely have populations been extirpated from complete stream drying, although during extreme events it could occur.

One of the factors that increases the risk of impacts associated with drought is the overall size of the stream. Very small streams (1.5-m (5-ft) wide or less) may be more susceptible to the effects of drought by increasing chances of drying, elevated water temperature, and freezing compared to larger streams. Approximately 27 conservation populations (21 percent of the current 127 conservation populations) are in streams that are 1.5 m (5 ft) or less in width throughout their entire length (2012 database). Decreased stream flow resulting from drought reduces the amount of habitat available for aquatic species, and water quality (e.g., temperature, dissolved oxygen) may become unacceptable in declining flow in small streams. However, not all small streams have equal risk of impacts from drought, as those with deeper pools are more likely to withstand some effects of drought. Small headwater streams with an inadequate number of deep pools are most likely to lose suitable habitat from drought effects. Other physical factors beyond stream size are also important influences on the vulnerability of a stream to drought, such as watershed area, stream type, hydrology, geology, vegetation types, irrigation, and aspect.

## Fire

Wildfires are a natural disturbance in forested watersheds. However, since the mid-1980s, wildfire frequency in western forests has nearly quadrupled compared to the average frequency during the period 1970–1986; the total area burned is more than six and a half times the previous level (Westerling et al. 2006). In addition, the average length of the fire season during 1987–2003 was 78 days longer compared to that during 1970–1986, and the average time between fire discovery and control was 29.6 days longer (Westerling et al. 2006).

In the Southwest, the fire season is followed by the monsoon season (July to August). Consequently, denuded watersheds are susceptible to heavy precipitation, which can lead to severe floods and ash flows. Although fish may survive the fire, ash and debris flows that occur after a fire can eliminate populations of fish from a stream (Rinne 1996; Brown et al. 2001; USFS 2006; Patten et al. 2007). Rio Grande cutthroat trout population eradication has been

documented in streams affected by fires such as Capulin Creek in Bandelier National Monument as a result of the Los Conchas Fire in 2011. Wildfires can negatively impact native fish populations, but they can also eradicate nonnative fish populations and provide opportunities for founding new Rio Grande cutthroat trout populations.

Fire risk can be reduced through fuels reduction and prescribed burns. The land management agencies in New Mexico and Colorado have active programs to improve forest health. As an example, in New Mexico around 81,000 ha (~200,000 acres) underwent fuel-reduction treatment between 1987 and 2005, thereby improving watershed conditions associated with 228 km (142 mi) of streams with Rio Grande cutthroat trout populations (Ferrell 2002, FWS 2011). Such techniques have been found to reduce fire severity even under extreme weather conditions in low-elevation ponderosa pine forests (Schoennagel et al. 2004).

## Climate Change

Although the extent of warming likely to occur is not known with certainty at this time, the Intergovernmental Panel on Climate Change (IPCC) has concluded that warming of the climate is unequivocal and continued greenhouse gas emissions at or above current rates would cause further warming (IPCC 2021a). The IPCC also projected that there will very likely be an increase in the frequency of hot extremes, heat waves, and heavy precipitation. Warming in the Southwest is expected to be greatest in the summer (Arias et al. 2021). Annual mean precipitation is likely to decrease in the Southwest and the length of snow season and snow depth is very likely to decrease. In the Western U.S. drought conditions and fire weather are likely to increase.

Climate change is predicted to have four major effects on the coldwater habitat occupied by Rio Grande cutthroat trout:

- (1) increased water temperature;
- (2) decreased streamflow;
- (3) change in the hydrograph (a graphical representation of the distribution of water discharge or runoff over a period of time); and
- (4) increased occurrence of extreme events (fire, drought, and floods).

### *Increased Water Temperature*

Water temperature influences the survival of salmonids in all stages of their life cycle. Alterations in the temperature regime from natural background conditions negatively affect population viability, when considered at the scale of the watershed or individual stream (McCullough 1999). Salmonids are classified as coldwater fish with thermal preferences centered around 15 °C (59 °F) (Shuter and Meisner 1992). High temperatures suppress appetite and growth, can influence behavioral interactions with other fish (Shrank et al. 2003), or can be lethal (McCullough 1999). Salmonids inhabiting warm stream segments have higher probabilities of dying from stress (McCullough 1999).

The optimum growth temperature (appetite is high and maintenance requirements low) for Rio Grande cutthroat trout is in the range of 13–15 °C (55.4–59 °F), similar to other cutthroat trout (Meeuwig et al. 2004; Bear et al. 2007; Zeigler et al. 2013) and their upper incipient lethal limit

is around 26 °C (78.8 °F), as has been found for other subspecies of cutthroat trout (Wagner et al. 2001; Johnstone and Rahel 2003; Zeigler et al. 2013). Upper incipient lethal limit (temperature at which 50 percent of the fish can survive for 7 days) for rainbow trout ranges from 24–26 °C (75.2–78.8 °F), for brown trout 23–26 °C (73.4–78.8 °F), and for brook trout 24–25 °C (75.2–77 °F) (McCullough 1999).

Habitat loss is predicted to occur in the lower elevation stream reaches (or lower latitude streams) due to increased temperatures. As a result, Rio Grande cutthroat trout populations may be further restricted to increasingly higher elevations or more northern latitudes (Meisner et al. 1988; Regier and Meisner 1990; Keleher and Rahel 1996; Nakano et al. 1996; Rahel et al. 1996; Poff et al. 2002; Rieman et al. 2007). However, many current RGCT populations already occur in high elevations streams which are more buffered from the negative effects of climate change (Zeigler et al. 2019).

In contrast to the potential negative impacts of water temperature increase on Rio Grande cutthroat trout, there could also be a potential benefit. Cold summer water temperatures (mean July temperature of less than 7.8 °C (46 °F)) have been found as a limiting factor to recruitment of cutthroat trout in high-elevation streams (Harig and Fausch 2002; Coleman and Fausch 2007). Cold summer water temperatures have been identified as limiting in Deep Canyon, Colorado (Pritchard and Cowley 2006) and is limiting in other waters, such as Rio de Las Trampas in New Mexico (Rogers 2013; Zeigler et al. 2013). As temperatures increase, these waters could be more suitable to supporting Rio Grande cutthroat trout recruitment.

### *Decreased Streamflow*

Models suggest a decrease in precipitation in the southwest (Kundzewicz et al. 2007; Seager et al. 2007), which would lead to reduced stream flows and a reduced amount of habitat for Rio Grande cutthroat trout. Streamflow is also predicted to decrease in the Southwest even if precipitation were to increase moderately (Nash and Gleick 1993; State of New Mexico 2005; Hoerling 2007). Winter and spring warming causes an increased fraction of precipitation to fall as rain, resulting in reduced snowpack, earlier snowmelt, and decreased summer runoff (Christensen et al. 2004; Stewart et al. 2005; Regonda et al. 2005). Earlier snowmelt and warmer air temperatures lead to a longer dry season, which affects stream flow. Warmer air temperatures lead to increased evaporation, increased evapotranspiration, and decreased soil moisture. These three factors would lead to decreased streamflow even if precipitation increased moderately. Climate change is likely to exacerbate the effects of decreased streamflow during drought on Rio Grande cutthroat trout.

### *Change in Hydrograph*

Changes in air temperature and precipitation will likely lead to changes in the magnitude, frequency, timing, and duration of runoff (Poff et al. 2002). Spring streamflow during the last 5 decades has shifted so that the major peak now arrives 1 to 4 weeks earlier, resulting in declining fractions of flow in the spring and summer (Stewart et al. 2005). In Colorado, the onset of springflow has already shifted by 2 weeks (Ray et al. 2008). The life history of salmonids is closely tied to flow regime, runoff in particular (Fausch et al. 2001). A change in timing or magnitude of floods can scour the streambed, destroy eggs, or displace recently emerged fry



downstream (Erman et al. 1988; Montgomery et al. 1999; Fausch et al. 2001). The environmental cues for Rio Grande cutthroat trout spawning are tied to increasing water temperature, increasing day length, and possibly flow, as it has been noted that they spawn when runoff from snowmelt has peaked and is beginning to decrease (Behnke 2002; Pritchard and Cowley 2006). Consequently, a change in the timing of runoff from spring to winter could disrupt spawning cues because peak flow would occur when the days are still short in length and water temperatures cold.

### *Increased Extreme Events*

An increase in extreme events such as drought, fires, and floods are predicted to occur because of climate change (IPCC 2021a). It is anticipated that an increase in extreme events will most likely affect populations living at the edge of their physiological tolerances. The predicted increases in incidences of extreme temperatures and wildfire may exacerbate the effects of drought and fire on Rio Grande cutthroat trout.

The extent to which climate change will affect Rio Grande cutthroat trout is not known with certainty at this time. Projections point to a range-wide impact through increased water temperatures, decreased stream flow, change in hydrograph, and an increased occurrence of extreme events, but the effect on individual populations will depend on other factors such as aspect, shading, and stream size. Range-wide, streams currently capable of supporting Rio Grande cutthroat trout are at elevations of 1,829 m (6,000 ft) and above. Currently, only about 1.6 percent of the conservation populations are in streams below 2,438 m (8,000 ft) in elevation (Alves et al. 2008). Climate change may affect Rio Grande cutthroat trout populations at lower elevations more markedly than at higher elevations, although other factors such as aspect, shading, and stream size will influence the degree to which individual streams are affected.

### Disease

Whirling disease is a significant concern to fishery managers in western states. Whirling disease is caused by the nonnative myxosporean parasite, *Myxobolus cerebralis*. This parasite requires two separate hosts, a salmonid fish and an aquatic worm (*Tubifex tubifex*) to complete its life cycle. Spores of the parasite are released from infected fish when they die. The spores are ingested by *T. tubifex* where they undergo transformation in the gut to produce actinosporean triactionomyxons (TAMs). Trout are infected either by eating the worms (and TAMs) or through contact with water in which TAMs are present. Once *M. cerebralis* is present, total year class failure can occur among susceptible species such as Rio Grande cutthroat trout under the proper suite of environmental conditions (Nehring 2008). Studies have shown that the proper suite of environmental conditions is not very restrictive and does not necessarily involve environmental degradation (Nehring 2008).

Laboratory (DuBey et al. 2007) and field (Thompson et al. 1999) experiments have shown that Rio Grande cutthroat trout are very susceptible to whirling disease, but fewer than five streams have been documented as infected (Patten and Sloane 2007, Alves et al. 2008). Research at Placer Creek, Colorado, demonstrated that incidence of whirling disease can be eliminated by removal of trout for three years, during which time whirling disease resistant lineages of *T. tubifex* worms are introduced to the system (Nehring et al. 2018).

Both Colorado and New Mexico have policies and regulations in place to minimize the risk of the introduction of whirling disease into Rio Grande cutthroat trout populations. In addition, both states have regulations regarding the stocking of fish by private landowners that are designed to eliminate the importation of whirling disease-positive fish. Per regulations, it is illegal to stock fish in public waters without prior permission from a state agency.

### III. CONSERVATION GOALS AND OBJECTIVES

*This Conservation Strategy's goal is to develop and implement the necessary conservation measures for the Rio Grande cutthroat trout to have sufficient resiliency, representation, and redundancy to provide for long-term viability.*

#### Goals

The overall goal of this Conservation Strategy is to provide for the long-term viability of Rio Grande cutthroat trout throughout its historical range by minimizing or removing threats to the species and promoting the conservation of Rio Grande cutthroat trout. One of the main purposes of this Conservation Strategy is to provide a framework of objectives and associated actions that can be implemented to abate threats, address information gaps, and guide monitoring efforts. Areas that currently support Rio Grande cutthroat trout will be maintained, while other areas will be managed for increased abundance, if feasible. New populations will be established where ecologically and economically feasible to increase the number of conservation populations and maintain the genetic diversity of the subspecies. The Conservation Team envisions a future where sufficient numbers of wild Rio Grande cutthroat trout populations are adequately secured through ongoing management and stewardship that the risk of extinction of the species is negligible.

#### The 3Rs - Resiliency, Representation, and Redundancy

The conservation status of the Rio Grande cutthroat trout will be determined through what is known as the 3Rs. Beginning in the mid-1990s, conservation biologists introduced a conceptual framework for evaluating the viability of a species using the concepts of “resiliency,” “representation,” and “redundancy” (Naeem 1998; Dunham et al. 1999; Shaffer and Stein 2000; Redford et al. 2011), referred to as the 3Rs. “Viability” in this context means the ability of a species to persist over the long term, and, conversely, to avoid extinction over the long term. A viable species has a sufficient degree of resiliency (self-sustaining populations), representation (genetic or environmental variability), and redundancy (multiple, strategically situated populations). On the other hand, a species that is deficient in one or more of these three characteristics will have a lower probability of being viable and, therefore, a corresponding increased risk of extinction. Together these three characteristics of resiliency, representation, and redundancy are what the Rio Grande cutthroat trout needs for viability (Table 3).

Table 3. Objectives and strategies needed to provide for long-term viability of the Rio Grande cutthroat trout.

Viability Objective	Viability Strategy
<b>Maximize Resiliency</b>	<b>Highly resilient</b> populations do not contain nonnative trout and are protected by complete fish migration barriers.
<b>Maximize Representation</b>	Maximize the number of highly resilient populations within each of the 5 GMUs.
<b>Maximize Redundancy</b>	Maximize the number of resilient populations across the range.

***Resiliency: The ability of the species to withstand stochastic events***

The viability of a species is dependent on the viability of its populations, which is greatly affected by the health of those populations (Daszak et al. 2000; Lochmiller 1996). Healthy populations allow for recovery after stochastic events or periodic disturbances. This is the essence of resiliency. Populations lacking healthy characteristics will be less likely to bounce back and are thus less resilient.

Measuring characteristics of population health (e.g., birth versus death rates, overall population size) can inform whether any given population can absorb disturbances such as random fluctuations in birth rates (demographic stochasticity), variations in rainfall (environmental stochasticity), or the effects of anthropogenic activities. The degree to which a population is resilient is related to the magnitude of disturbance it can absorb (Holling 1973). Sufficient resiliency, therefore, is having population conditions that allow it to recover from periodic disturbances. Species-level resiliency is measured through the resiliency of its collective populations. Therefore, understanding population resilience for the Rio Grande cutthroat trout is critical to managing for its viability.

For populations to be resilient and successful contributors to the species as a whole, they need certain characteristics. These characteristics might include, for example, a sufficient size (influenced by the physical condition of the individuals, (Beldomenico and Begon 2010; Redford et al. 2011)), and a certain distribution of individuals within the population to ensure they can locate mates, and a positive growth rate—all of which can act as population health metrics. Resilient populations, therefore, contribute to species’ viability; conversely, populations that lack resiliency may persist for some time, but their contribution may be limited as they may eventually be extirpated by a disturbance. In the absence of quantitative population health metrics, habitat size and quality may be used as a proxy, as a species is generally most resilient in its highest quality habitat.

The Conservation Team has determined that the Rio Grande cutthroat trout needs resilient populations throughout the GMUs to ensure single catastrophic events do not eliminate or cause the extinction of the species. The resiliency of Rio Grande cutthroat trout populations will be assessed through recent modeling efforts (Zeigler et al. 2019). This work demonstrated that the most important factors contributing to long term persistence were the absence of nonnative fishes and the presence of a complete fish barrier. The Conservation Team will focus management actions on creating and maintaining current populations that have functional fish barriers and do not contain nonnative trout, while taking actions to improve the status of less resilient populations by removing nonnative fish and constructing fish barriers.

***Representation: The ability of a species to adapt to changing environmental conditions***

The viability of a species is also dependent in part on its ability to adapt and evolve to changing environmental conditions over time. Populations are the functioning unit of evolution, and individuals adapt. Therefore, the species' adaptive capabilities will be supported by the range of variation found within and between the populations comprising the species. Representation can be measured through the breadth of genetic diversity within and among populations or ecological diversity (also called environmental variation or diversity) across the species' range. This measure can inform whether a species is capable of adapting to changes (natural or human caused) in its environment. Genetic diversity and ecological diversity are not necessarily mutually exclusive, nor are they necessarily one and the same.

Sufficient representation, therefore, is having the genetic flexibility or inhabiting varying environmental conditions to allow the population(s) to respond to changing environmental conditions through adaptation in extant populations, and consequently, supporting the evolutionary potential of the species. The challenge is characterizing those combinations of genetic conditions and distribution across the landscape likely to result in viability versus those expected to lead to extinction in a changed environment. Maintaining sufficient representation to allow adaptive and evolutionary processes to proceed is needed to support species viability. This can be accomplished by having populations established in areas that represent various ecological settings within the range, and by protecting populations with varying genetic makeup to increase the chances of them being able to adapt to future conditions.

The Rio Grande cutthroat trout should be sufficiently represented in each of the five GMUs it historically occupied to provide for species viability over the long term.

***Redundancy: The ability of a species to withstand catastrophic events***

The viability of a species is dependent in part on the species ability to recover following a catastrophic event either by having populations that are unaffected or by having populations that can bounce back following such an event. Therefore, this aspect of viability is supported by the duplication and distribution of populations in such a configuration that allows the species to withstand catastrophic events, thereby retaining sufficient redundancy. Redundancy enhances viability through the spreading of risk (Carroll et al. 2010; Redford et al. 2011). Redundancy protects against unpredictable and catastrophic events for which adaptation at the individual or population level is unlikely. Sufficient redundancy requires having enough populations

distributed across the landscape to provide a margin of safety for the species to withstand catastrophic events.

### **Probability of Persistence Model**

The conservation status of the Rio Grande cutthroat trout, like other inland cutthroat trout, has traditionally been evaluated with a Population Health Index (Alves et al. 2008, Hirsch *et al.* 2006). Limitations of that approach have inspired a shift toward modeling population persistence with Bayesian Networks (BN) in an effort to bring more quantitative information to bear in a flexible framework better suited for incorporating new information as it becomes available (Rogers 2013). BN models are useful because they support logical reasoning based on existing knowledge, and they are able to incorporate uncertainty (Marcot et al. 2001; Newton et al. 2007; Peterson et al. 2013). Furthermore, BN models have already been used in previous applications to explore the threat of climate change (Jay et al. 2011) and address various fisheries management decisions (Peterson et al. 2008; Peterson et al. 2013; Roberts et al. 2013). The goal for the development of the initial BN model was to mimic the Population Health Index by evaluating the probability of future persistence in the short term (over the next 30 years) of individual Rio Grande cutthroat trout populations given specific threats to the subspecies. This initial Rio Grande cutthroat trout BN model (Rogers 2013) was originally developed for the Colorado River cutthroat trout (Roberts et al. 2013) and formed the foundation for future modeling efforts specific to Rio Grande cutthroat trout.

At the request of the RGCT Conservation Team, a more robust and peer reviewed RGCT BN model was developed to understand the likelihood of individual conservation populations persisting in the current time period, the short term, and the long term (Zeigler et al. 2019). The model assumes that no management actions will occur (e.g. barrier installation, nonnative eradication, restoring populations), allowing managers to identify populations in need of management which would increase the probability of persistence into the future. In this BN model, the effect of individual factors on population persistence was determined by a sensitivity analysis of all factors incorporated into the model. The sensitivity analysis indicated threats associated with nonnative fishes (e.g. nonnative presence, barrier absence, proximity of nonnative fishes) are the primary factors influencing population persistence (Zeigler et al. 2019). Although the BN model differs significantly from other methods previously used (Alves et al. 2008; U.S. Fish and Wildlife Service 2014) the overall results are similar. The BN model incorporates the most recent data and is the best available science for the evaluation of the status of RGCT at the population and subspecies level (Bakevich et al 2019).

### **Objectives**

The following objectives are included in the 2023 Conservation Agreement and have been the objectives of the Conservation Team since the original Conservation Agreement was signed.

***Objective 1: Identify and characterize all Rio Grande cutthroat trout conservation populations and occupied habitat.*** All waters with Rio Grande cutthroat trout populations will be identified, and known populations and their habitat will be monitored to detect changes. Complete genetic analyses on known or suspected Rio Grande cutthroat trout populations.

**Objective 2: *Secure and enhance conservation populations.*** Secure and, if necessary, enhance all known and suspected conservation Rio Grande cutthroat trout populations.

**Objective 3: *Restore populations.*** Increase the number of stream populations by restoring Rio Grande cutthroat trout within their native range. Local restoration goals and approaches will be developed to meet this objective.

**Objective 4: *Secure and enhance watershed conditions.*** Maintain and, if necessary, improve watershed conditions for Rio Grande cutthroat trout, including development of protocols for monitoring.

**Objective 5: *Public outreach.*** Develop and implement a public outreach effort specifically addressing Rio Grande cutthroat trout conservation.

**Objective 6: *Data sharing.*** Continue to build and maintain the Rio Grande cutthroat trout database so that information can readily be shared between and among agencies and jurisdictions.

**Objective 7: *Coordination.*** Maximize effectiveness of Rio Grande cutthroat trout conservation efforts by coordinating signatory agency efforts toward achieving a common goal.

#### **IV. CONSERVATION EFFORTS TO DATE**

##### **Interagency Coordination**

Management of Rio Grande cutthroat trout has been ongoing for decades, and conservation of the subspecies is a high priority in both New Mexico and Colorado, for conservation and recreational value. The Rio Grande cutthroat trout is the State Fish of New Mexico and an important species for recreational angling in both states. Since the Conservation Agreement was first signed in 2003, the Conservation Team has served to formalize the conservation efforts for the subspecies and provided a forum for interstate and interagency coordination and management. Restoration methods have been developed, formalized, implemented, and adjusted collaboratively since the Conservation Team's establishment, and coordinated management has resulted in the restoration of 13 populations in the last 10 years. The Rio Grande cutthroat trout database was established through the Conservation Agreement and has served as a data repository for all surveys, restorations, habitat work, or barrier maintenance. The sharing and pooling of data among the signatories into a single database has allowed the Team to comprehensively assess the conservation status of Rio Grande cutthroat trout and adjust methods as necessary.

##### **Restoration in New Mexico**

In New Mexico, NMDGF began investigating the apparent decline of Rio Grande cutthroat trout during the 1960s and 1970s. A Rio Grande cutthroat trout biologist position was created in 1989 and tasked to coordinate management and conservation efforts of the subspecies for the State.

Restoring Rio Grande cutthroat trout to historical habitat requires a large amount of time and manpower, and under the guidance of the Rio Grande cutthroat trout biologist, numerous stream restorations, population surveys, genetic investigations, nonnative species removals, barrier constructions and maintenance, and wildfire rescues have been successfully implemented. The Conservation Agreement has been a catalyst to jumpstart State conservation efforts, underscoring the importance of Rio Grande cutthroat trout to managers and the public. The New Mexico Department of Game and Fish expends approximately \$350,000 per year on conservation and management activities and \$400,000 per year on Rio Grande cutthroat trout rearing at Seven Springs State Hatchery. In 2012, a second permanent position was assigned to help with program activities. Since 2012, 13 restoration projects have been completed under the guidance of New Mexico's Rio Grande cutthroat trout biologist (Appendix C). On the National Forests, over \$6 million has been spent on habitat improvement projects, surveys, restorations, and genetic and disease monitoring. The National Forests in New Mexico contribute to conservation of the species by building and repairing barriers, population and habitat monitoring, maintenance and enhancement of pasture fences, nonnative removal, and Rio Grande cutthroat trout education (Appendix A).

### **Restoration in Colorado**

In 1973, Colorado listed the Rio Grande cutthroat trout as a State threatened species. Recovery goals were established, and, after an 11-year period of conservation activities, the species was delisted in 1984 (CPW 1992). Rio Grande cutthroat trout are presently designated a species of special concern in Colorado. Conservation activities have been ongoing since 1984 including population monitoring, restoration projects, broodstock development, genetic testing, barrier construction and habitat improvement (Appendix A). From 2002 to 2011, CPW expended \$792,000 on conservation and management activities. Colorado Parks and Wildlife employs an area Aquatic Biologist, and Rio Grande cutthroat trout management is a high priority of the position. Additionally, FWS Partners for Wildlife Program, USFS, NPS, and BLM expended over \$1.5 million on habitat improvement projects in Colorado. Since 2002, 8 restoration projects resulting in 9 new conservation populations have been initiated or completed in Colorado. Stream restorations and other conservation actions for the trout continue to be implemented.

### **Public Education and Outreach**

In New Mexico, NMDGF has used several outlets to inform the public about Rio Grande cutthroat trout. Annually, NMDGF produces the Fishing Rules and Information booklet to inform anglers about current angling regulations, which includes information regarding Rio Grande cutthroat trout. NMDGF also publishes an online magazine titled "New Mexico Wildlife" which has featured Rio Grande cutthroat trout information. The NMDGF website and social media accounts are available for treatment notices, regulation changes, and angling information regarding Rio Grande cutthroat trout. NMDGF leads an annual stocking event where volunteers hike Rio Grande cutthroat trout into the Rio Grande gorge and stock them. NMDGF continues to participate in other public outreach efforts such as public meetings, classroom and local club presentations, "Trout in the Classroom" programs, fishing clinics, and providing signage along Rio Grande cutthroat trout streams. Some examples include signs along Comanche Creek discussing habitat and species restoration, a Rio Grande cutthroat trout

costume used for educational events, and Rio Grande cutthroat trout identification pamphlets produced by USFS, BLM, and NMDGF.

In Colorado, CPW has produced a Rio Grande cutthroat trout brochure that describes conservation biology, distribution, and management and conservation actions. Additionally, Colorado has an online fishing atlas that guides anglers to various waters throughout the state including some cutthroat trout recreation waters. Other outreach efforts in Colorado include presentations at fishing clinics and conservation camps where biologists highlight conservation efforts for native fish, including Rio Grande cutthroat trout. On CPW's website, a page is dedicated to cutthroat trout.

As a hands-on approach to public education, the FWS's New Mexico Fish and Wildlife Conservation Office sponsored the Native Fish in the Classroom (NFIC), an environmental education program. Fifth-grade students from several elementary schools learned about natural resource conservation by raising and later releasing native fish into their native habitat. Half of the participating schools raise Rio Grande cutthroat trout fingerlings provided by the Seven Springs Hatchery. Through NFIC, students were given an opportunity to learn the value of aquatic ecosystems by developing personal connections to their native fish. Staff provided technical assistance, classroom presentations, and lead activities throughout the semester. In addition to the NFIC project, staff participated in community outreach efforts including field trips to a river/stream, environmental camps, and community fairs. These events allow for discussion about biology, conservation, native species, and threatened and endangered species.

In 2002, Santa Fe National Forest staff developed a Rio Grande Cutthroat Trout Lifecycle game, and developed a Spanish version in 2006. Additionally, a curriculum was developed supporting the game and correlated to standards set by New Mexico State Department of Education. The Santa Fe National Forest has distributed the game and curriculum to numerous schools and annually provides Rio Grande cutthroat trout education in classrooms, at local festivals, Kid's Fishing Days, and at Water Festivals in Albuquerque, Rio Rancho, and Santa Fe to highlight the importance of Rio Grande cutthroat trout and the threats to the species. The Santa Fe National Forest has also developed a Rio Grande cutthroat trout mascot, "Carlos Cutthroat," which is a full suit resembling a cutthroat trout and often accompanies the classroom presentations. The Santa Fe National Forest has also designed and printed a temporary tattoo for kids featuring a Rio Grande cutthroat trout as part of the Respect the Rio program.

Trout Unlimited conducts Rio Grande cutthroat trout outreach across New Mexico and Colorado. For example, Trout Unlimited has 40 Trout in the Classroom tanks, including 3 NFIC. Trout Unlimited helped to produce the second generation of Rio Grande cutthroat trout posters, of which nearly 1,500 have been distributed. Posters have also been printed as permanent signs for placement across public lands within the range. Youth events are a focus of the organization, including the Questa youth fishing days and the Rio Grande cutthroat stocking event in the upper Rio Grande and Red Rivers.

## **Summary**

Range-wide, the total estimated expenditures for Rio Grande cutthroat trout exceeds \$30 million since 2000. The Conservation Team members have demonstrated a longstanding commitment to



Rio Grande cutthroat trout management that has resulted in the range-wide improvement in the viability of the species.

## V. CONSERVATION MEASURES

The specific conservation measures that will be implemented by the Conservation Team are outlined below, organized under the seven Strategic Objectives. An itemized table of the conservation measures for each objective and GMU are provided in Appendix B. Progress towards the 2013 Conservation Strategy goals are shown in Appendix C.

### ***Objective 1: Identify and characterize all Rio Grande cutthroat trout conservation populations and occupied habitat.***

*Agencies Responsible:* Primarily the states, with assistance from all signatories

*Actions:*

- 1.1 Populations will generally be monitored every 5 years. Population monitoring will include density estimates for all fish species detected (i.e., number of fish/km of stream) and habitat characterization. Length of occupied habitat shall be determined based on a combination of on-the-ground surveys, maps of perennial waters, and previous information.
- 1.2 Genetic analyses will be completed on known or suspected Rio Grande cutthroat trout populations that have not yet been genetically tested. Additional analyses will be conducted to update the genetic status of conservation populations where warranted.
- 1.3 Specific streams to be monitored or genetically analyzed will be discussed every year at the Annual Coordination Meeting (see below) and coordinated by the Conservation Team members. Each year an Annual Work Plan will be completed at the Annual Coordination Meeting. Streams to be worked on in the first year are identified in the current 1-Year Plan in Appendix B.

### ***Objective 2: Secure and enhance conservation populations.***

Rio Grande cutthroat trout conservation populations currently exist in each GMU. Securing conservation populations from known threats, such as nonnative fish and disease, will help ensure population persistence across the range (resiliency and redundancy), as well as provide the subspecies with representation across its historical range. A secure population is one with no nonnative fish and a downstream barrier to prevent their introduction. The number of currently secure populations by GMU is shown in Table 1.

*Agencies Responsible:* State and Federal agencies

*Actions:* Depending on the needs of the specific stream, these efforts may include, but are not limited to:

- 2.1 Restrict introduction of nonnative fish species near existing populations.
- 2.2 Restrict spread of disease and invasive species.

- 2.3 Remove nonnative fish species.
- 2.4 Regulate angling and enforcing regulations.
- 2.5 Construct in-channel barriers.
- 2.6 Maintain sources of genetically pure Rio Grande cutthroat trout.

**Objective 3: Restore populations.**

*Agencies Responsible:* States as lead with assistance from all signatories

*Actions:* These efforts include:

- 3.1 Take restoration actions, as necessary, to maintain secure Rio Grande cutthroat trout populations as shown in Table 1.
- 3.2 Establish highly resilient secure conservation Rio Grande cutthroat trout populations distributed among the GMUs as shown in Table 3.
- 3.3 When restoring populations, ensure that genetic purity of the subspecies and diversity is maintained among the basins.
- 3.4 Enhance and/or maintain habitat for populations.

Various lengths of stream will be considered for restoration<sup>10</sup>, depending on the distribution and status of other populations within the GMU. Large populations that encompass long stretches of habitat provide security from extirpation (resiliency), while smaller populations provide the species security across the landscape (redundancy). For example, if a GMU has a number of populations clustered together, a stream far from that cluster may be identified as a candidate for restoration that is perhaps shorter than other potential reintroduction streams. This would provide the species redundancy within the GMU, reducing the species' vulnerability to the same stochastic event that could affect the clustered populations.

Establishing or maintaining populations among different GMUs will reduce the likelihood of the subspecies being eliminated by stochastic events. This will be accomplished by establishing larger and more complex populations across the range of the subspecies, providing geographic representation in occupied habitats and reducing the likelihood any single catastrophic event will jeopardize the subspecies. If the number of populations distributed among GMUs is not feasible, changes may be addressed in future updates to the strategy. Populations that are free from nonnative trout competition and predation, potential hybridization, and secured by a migration barrier are more likely to persist into the foreseeable future.

One important factor to consider in determining where to implement future restoration efforts is the risk of wildfire. To better understand how Rio Grande cutthroat trout populations could be affected by wildfire, The Nature Conservancy was contracted by NMDGF to perform a wildfire risk analysis in 2013. Models using landscape scale variables (e.g., forest type, years since last

---

<sup>10</sup> "Restoration" in this Conservation Strategy means eliminating nonnative fish, securing the restored stream section with a downstream fish barrier, and reintroducing Rio Grande cutthroat trout to the reach.

burn) were developed to determine the likelihood of a catastrophic flow event as well as the intensity or severity of such an event. Wildfire risk was determined for each Rio Grande cutthroat trout population, but also at watershed, sub-watershed, and GMU scales. Final products of this contract include a report, map book, and GIS shape files (Miller and Basset 2013). These products improve our understanding of the wildfire risks to specific populations and help to guide restoration and recovery efforts.

Conservation populations of Rio Grande cutthroat trout exist in all 5 GMUs (Table 4). The number of populations per GMU provides a conservation target for the restoration of future populations over the next 10 years as a result of implementation of this Conservation Strategy. However, if two highly resilient populations are connected, effectively turning two or more highly resilient populations into one large interconnected population, the number of target populations necessary for the GMU may be reduced (such that development of large, interconnected populations is not discouraged in order to count as additional populations). The table of all current populations by GMU is in Appendix D.

The Conservation Team has determined that the Rio Grande cutthroat trout needs enough resilient populations in each GMU to withstand stochastic events and continue to be represented throughout its historical range. The number of current conservation populations and their distribution per GMU is shown in Table 4 along with the conservation targets to be accomplished over the next 10 years under this Conservation Strategy. The targets are provided as a range to accommodate variable conditions in the field that may enhance or limit restoration opportunities. The 2013 Conservation Strategy goals were largely met or exceeded and are provided in Appendix C.

***Objective 4: Secure and enhance watershed conditions.***

*Agencies Responsible:* All land management signatories

*Actions:*

- 4.1 Protection and enhancement of riparian and instream habitat through grazing and timber management, among others.
- 4.2 Develop and implement a habitat monitoring protocol to evaluate Rio Grande cutthroat trout habitat conditions (Appendix E)
- 4.3 Use data from habitat monitoring to develop strategies to move Rio Grande cutthroat trout habitat towards properly functioning conditions.
  - Reduce wildfire risk through fuels reduction and timber management plans.
  - Conduct land management actions so that stream patterns, geometry, and habitats are maintained or improved toward robust stream health and greater habitat resiliency.
- 4.4 Develop and implement a fire and drought contingency plan (Appendix F)
- 4.5 During plan revision, update resource management plans as necessary to address threats to Rio Grande cutthroat trout habitat and enhance watershed conditions.

The maintenance of high quality Rio Grande cutthroat trout habitat is important to the continued

existence of this species. Protection of existing habitat and improvement of habitat, in certain areas, are necessary components of this Conservation Strategy and the maintenance and improvement of the resilience of populations in changing climatic conditions. Healthy watersheds can minimize incidence of fire, flooding, and reduce the severity of drought, increasing the likelihood Rio Grande cutthroat trout populations would survive these events. With this consideration, land management activities will be conducted in such a manner as to protect all stream habitats, including occupied and potential Rio Grande cutthroat trout habitat, and minimize fire risk. Land management activities are currently practiced according to the Carson, Gila, Lincoln, Santa Fe, and Rio Grande National Forest Land and Resource Management Plans, and BLM Resource Management Plans. During scheduled revisions, the forests and BLM field offices will evaluate the current Land and Resource Management Plans and update as necessary to provide adequate protection for Rio Grande cutthroat trout with current best management practices. Land management activities that would result in the loss of habitat or cause a reduction in long-term habitat quality will be avoided.

A large amount of habitat improvement work has been completed to date on Federal and private lands including projects such as developing off-stream water sources, fencing riparian areas, placing instream structures to enhance habitat complexity, stabilizing stream banks, riparian plantings, constructing fish migration barriers, closing or relocating roads and trails, culvert removal and/or replacement, improving road runoff, and stabilizing road surfaces. Instream

Table 4. Current number of populations and population restoration goals for this 10-year Conservation Strategy per GMU.

GMU	Populations to be Restored	All Current Conservation Populations	
		Current	Total After Restoration
Canadian	1 to 3	11	12 to 14
Caballo <sup>11</sup>	0	1	1
Lower Rio Grande	3 to 5	59	62 to 64
Pecos	1 to 3	11	12 to 14
Rio Grande Headwaters	3 to 5	43	46 to 48
<b>Range-wide Total</b>	<b>8 to 16</b>	<b>125</b>	<b>133 to 140</b>

<sup>11</sup> In the Caballo GMU, Rio Grande cutthroat trout restoration was completed in Las Animas Creek in 2018, and is the only historic location of RGCT in that GMU. Restoration will not occur elsewhere in the GMU where the species was not historically known to occur.

habitat improvement may increase population sizes, thereby increasing population resiliency. These projects may also help streams be more resilient to climate change and catastrophic events such as post fire flooding or drought.

Large scale watershed condition (sixth code HUC) were evaluated for all USFS lands in 2011 and have been reassessed periodically. The factors that are evaluated include:

1. Water Quality
2. Water Quantity
3. Aquatic Habitat
4. Aquatic Biota
5. Riparian/Wetland Vegetation
6. Roads and Trails
7. Soils
8. Fire Regime or Wildfire
9. Forest Cover
10. Rangeland Vegetation
11. Terrestrial Invasive Species
12. Forest Health

These evaluations are scheduled to be done every five years. Range-wide, a large proportion of the watershed conditions within the forests that have Rio Grande cutthroat trout are rated as “functioning at risk,” which means that they exhibit moderate geomorphic, hydrologic, and biotic integrity relative to their natural potential condition (USFS 2011). These ratings may not be indicative of the habitat within specific areas that contain Rio Grande cutthroat trout which generally only occupy a small portion of streams within the sixth code HUCs but are a starting point to evaluate range-wide conditions. Watershed Action Plans are developed for priority watersheds within each forest that concentrates management activities. Priority watersheds are the designated watersheds where restoration activities will concentrate on the explicit goal of maintaining or improving watershed condition. The current priority watersheds do not necessarily have conservation populations within them; however, the selected priority watersheds should be updated every five years.

A monitoring protocol has been drafted to document aquatic habitat conditions across all Rio Grande cutthroat trout waters (Appendix E). The protocol was designed to develop a standardized approach that is efficient in both field application and database management, can be repeated from one year to the next, produces comparable data across the range of Rio Grande cutthroat trout, and yields credible information. The intent of the protocol is to conduct the habitat assessment at the time of population monitoring, or, if time constraints do not allow, at least within the same field season. The final protocol will be utilized by cooperating partners to bring consistency to habitat monitoring but is not intended to replace more detailed habitat assessments such as Proper Functioning Condition (PFC), Multiple Indicator Monitoring (MIM), Basin-Wide Stream Habitat Inventory, or other methods. Habitat assessments and habitat improvements are reported in the annual accomplishment reports but the actual data or detailed project report is maintained by the respective agency that conducted the inventory or completed the improvement project. A list of upcoming habitat monitoring and enhancement efforts is included in Appendix B.

***Objective 5: Public outreach.***

*Agencies Responsible:* All signatories

*Actions:*

- 5.1 Increase awareness of Rio Grande cutthroat trout conservation efforts.
- 5.2 Increase and publicize angling opportunities for Rio Grande cutthroat trout.

Public outreach is a critical component to the successful conservation and management of any species. It is vital that the public is informed and allowed to comment on efforts to conserve and manage Rio Grande cutthroat trout. Public outreach should not only inform and educate, but also listen to the public. Public outreach should portray information such as status of the species, restoration efforts, regulations, and socioeconomic factors.

Angling regulations can be an effective fishery management tool to protect fish, if necessary. Fishing regulations in New Mexico and Colorado appropriately manage recreational angling. For example, many of the streams with Rio Grande cutthroat trout are “catch and release.” Those that are not have a two (New Mexico) or four (Colorado) fish limit. Many of the streams with pure populations of Rio Grande cutthroat trout are remote and angling pressure is light.

***Objective 6: Data sharing.***

*Agencies Responsible:* States as lead with assistance from all signatories

*Actions:*

- 6.1 The Annual Coordination Meeting will be held to update the database with data regarding populations, habitat, genetic status, presence of nonnatives, and other factors.
- 6.2 The database will be maintained regularly and shared between signatories.

The Rio Grande cutthroat trout database is a crucial component of the work of the Conservation Team. Because it is a central repository of all population and habitat information, it can be used for all manner of analyses of a single population, a GMU, or the species as a whole. The coordination and collaboration that led to the database’s early development demonstrates the commitment of the signatories to Rio Grande cutthroat trout conservation.

***Objective 7: Coordination.***

*Agencies Responsible:* All signatories

*Actions:*

- 7.1 Attend the Annual Coordination Meeting.
- 7.2 Coordinate the Annual Work Plan among agencies.
- 7.3 Report results of monitoring.

- 7.4 Assess whether the Conservation Strategy is achieving its goals and make any changes necessary to ensure goals are being met.

## **VI. MONITORING AND ADAPTIVE MANAGEMENT**

### **Monitoring**

Monitoring will be of two types: implementation and effectiveness. Implementation monitoring will consist of assessing the status and progress of all conservation actions identified in this Conservation Strategy. This type of monitoring will be documented at the Annual Coordination Meeting to ensure the Conservation Team is making expected progress. Effectiveness monitoring will consist of assessing the effectiveness of the conservation actions that have been completed to date compared to the previous year's annual work plan. Both implementation and effectiveness monitoring will be reviewed at the annual meeting of the Rio Grande Cutthroat Trout Conservation Team. Although this is not a formal Adaptive Resource Management plan, the Conservation Team has the ability to respond to changing conditions and updates in scientific approaches. The Annual Coordination Meeting serves as the forum for adapting conservation measures as necessary to changing conditions. Appendix B lists the monitoring actions that will be taken under this Conservation Strategy.

### **Annual Coordination Meeting**

Every year of the Agreement, CPW and NMDGF will convene a meeting of the Conservation Team for an annual review of conservation activities. Additional meetings may be called as necessary to fulfill the commitments of this Conservation Strategy.

### **Annual Reporting**

In cooperation with and approval by all involved parties, the Conservation Team will record and distribute an annual report that consists of:

- A. The minutes of the annual meeting encompassing the discussion regarding status of the species and actions accomplished,
- B. An updated Summary of Activities table (Appendix B) showing the past year's accomplishments,
- C. Results of the annually updated status assessment database, and
- D. Proposed or planned activities for the next field season (Annual Work Plan).

In addition to the annual report, every 10 years the Conservation Team will complete the Rio Grande cutthroat trout range-wide Status Assessment as described in the Conservation Agreement.

## LITERATURE CITED

- Allendorf, F.W., R.F. Leary, N.P. Hitt, K.L. Knudsen, L.L. Lundquist, and P. Spruell. 2004. Intercrosses and the U.S. Endangered Species Act: Should hybridized populations be included as westslope cutthroat trout? *Conservation Biology* 18:1203-1213.
- Alves, J.E., K.A. Patten, D.E. Brauch, and P.M. Jones. 2008. Rangewide status of Rio Grande cutthroat trout (*Oncorhynchus clarkii virginalis*): 2008. Rio Grande Cutthroat Trout Conservation Team Report. Colorado Division of Wildlife, Fort Collins, Colorado.
- Arias, P.A., N. Bellouin, E. Coppola, R.G. Jones, G. Krinner, J. Marotzke, V. Naik, M.D. Palmer, G.-K. Plattner, J. Rogelj, M. Rojas, J. Sillmann, T. Storelvmo, P.W. Thorne, B. Trewin, K. Achuta Rao, B. Adhikary, R.P. Allan, K. Armour, G. Bala, R. Barimalala, S. Berger, J.G. Canadell, C. Cassou, A. Cherchi, W. Collins, W.D. Collins, S.L. Connors, S. Corti, F. Cruz, F.J. Dentener, C. Dereczynski, A. Di Luca, A. Diongue Niang, F.J. Doblas-Reyes, A. Dosio, H. Douville, F. Engelbrecht, V. Eyring, E. Fischer, P. Forster, B. Fox-Kemper, J.S. Fuglestedt, J.C. Fyfe, N.P. Gillett, L. Goldfarb, I. Gorodetskaya, J.M. Gutierrez, R. Hamdi, E. Hawkins, H.T. Hewitt, P. Hope, A.S. Islam, C. Jones, D.S. Kaufman, R.E. Kopp, Y. Kosaka, J. Kossin, S. Krakovska, J.-Y. Lee, J. Li, T. Mauritsen, T.K. Maycock, M. Meinshausen, S.-K. Min, P.M.S. Monteiro, T. Ngo-Duc, F. Otto, I. Pinto, A. Pirani, K. Raghavan, R. Ranasinghe, A.C. Ruane, L. Ruiz, J.-B. Sallée, B.H. Samset, S. Sathyendranath, S.I. Seneviratne, A.A. Sörensson, S. Szopa, I. Takayabu, A.-M. Tréguier, B. van den Hurk, R. Vautard, K. von Schuckmann, S. Zaehle, X. Zhang, and K. Zickfeld. 2021. 2021: Technical Summary. In *Climate Change 2021: The Physical Science Basis. Contribution of Working Group I to the Sixth Assessment Report of the Intergovernmental Panel on Climate Change* [Masson-Delmotte, V., P. Zhai, A. Pirani, S.L. Connors, C. Péan, S. Berger, N. Caud, Y. Chen, L. Goldfarb, M.I. Gomis, M. Huang, K. Leitzell, E. Lonnoy, J.B.R. Matthews, T.K. Maycock, T. Waterfield, O. Yelekçi, R. Yu, and B. Zhou (eds.)]. Cambridge University Press, Cambridge, United Kingdom and New York, NY, USA, pp. 33–144. doi:10.1017/9781009157896.002.
- Bakevich, B.D., R.J. Pagen, and B.W. Felt. 2019. Range-wide status of Rio Grande cutthroat trout (*Oncorhynchus clarkii virginalis*): 2016. Rio Grande Cutthroat Trout Conservation Team Report. New Mexico Department of Game and Fish, Santa Fe, New Mexico.
- Bear, E.A., T.E. McMahon, and A.V. Zale. 2007. Comparative thermal requirements of westslope cutthroat trout and rainbow trout: Implications for species interactions and development of thermal protection standards. *Transactions of the American Fisheries Society* 136:1113-1121.
- Behnke, R. 1967. Rare and endangered species: the Rio Grande trout (*Salmo clarkii virginalis*). Colorado Cooperative Fishery Unit, Colorado State University, unpublished report. 17 pages.
- Behnke, R.J. 2002. Trout and salmon of North America. The Free Press. New York.
- Beldomenico, P.M. and M. Begon. 2010. Disease spread, susceptibility and infection intensity: Vicious circles? *Trends in Ecology and Evolution* 25: 21–27.
- Bjornn, T.C. and J. Mallett. 1964. Movements of planted and wild trout in an Idaho river system. *Transactions of the American Fisheries Society*. 93:70-76.
- Brown, D.K., A.A. Echelle, D.L. Propst, J.E. Brooks, and W.L. Fisher. 2001. Catastrophic wildfire and number of populations as factors influencing risk of extinction for Gila trout (*Oncorhynchus gilae*). *Western North American Naturalist* 61: 139-148.
- Bureau of Land Management. 1991. San Luis Resource Area record of decision and approved resource management plan. San Luis Resource Area, Cañon City District, Colorado. Available at [http://www.blm.gov/co/st/en/BLM\\_Programs/land\\_use\\_planning/rmp/archived/san\\_luis.html](http://www.blm.gov/co/st/en/BLM_Programs/land_use_planning/rmp/archived/san_luis.html) Accessed August 4, 2013.



- Carroll, C., J.A. Vucetich, M.P. Nelson, D.J. Rohlf, and M.K. Phillips. 2010. Geography and recovery under the U.S. Endangered Species Act. *Conservation Biology* 24: 395-403.
- Christensen, N.S., A.W. Wood, N. Voisin, D.P. Lettenmaier, and R.N. Palmer. 2004. The effects of climate change on the hydrology and water resources of the Colorado River Basin. *Climatic Change* 62:337-363.
- Coleman, M.A. and K.D. Fausch. 2007. Cold summer temperature limits recruitment of Age-0 cutthroat trout in high-elevation Colorado streams. *Transactions of the American Fisheries Society* 136:1231-1244.
- Colorado Division of Wildlife. 1992. Rio Grande cutthroat trout management plan. Management plan (draft), Colorado Division of Wildlife, Southwest Region, Montrose, CO.
- Cowley, D. E. 1993. Strategies for development and maintenance of a hatchery broodstock of Rio Grande cutthroat trout (*Oncorhynchus clarki virginalis*). Report to the New Mexico Department of Game and Fish.
- Daszak, P., A.A. Cunningham, and A.D. Hyatt. 2000. Emerging infectious diseases of wildlife—threats to biodiversity and human health. *Science* 287: 443–449.
- DuBey, R.J., C.A. Caldwell, and W.R. Gould. 2007. Relative susceptibility and effects on performance of Rio Grande cutthroat trout and rainbow trout challenged with *Myxobolus cerebralis*. *Transactions of the American Fisheries Society* 136:1406-1414.
- Dunham, J.B., M.M. Peacock, B.E. Rieman, R.E. Schroeter, G.L. Vinyard. 1999. Local and geographic variability in the distribution of stream-living Lahontan cutthroat trout. *Transactions of the American Fisheries Society* 128:875-889.
- Dunham, J.B., S.B. Adams, R.E. Schroeter, and D.C. Novinger. 2002. Alien invasions in aquatic ecosystems: toward an understanding of brook trout invasions and potential impacts on inland cutthroat trout in western North America. *Reviews in Fish Biology and Fisheries* 12:373-391.
- Echo, J.B. 1954. Some ecological relationships between yellow perch and cutthroat trout in Thompson Lakes, Montana. *Transactions of the American Fisheries Society* 84:239-248.
- Erman, D.C., E.D. Andrews, and M. Yoder-Williams. 1988. Effects of winter floods on fishes in the Sierra Nevada. *Canadian Journal of Fisheries and Aquatic Science* 45:2195-2200.
- Fausch, K.D., Y. Taniguchi, S. Nakano, G.D. Grossman, and C.R. Townsend. 2001. Flood disturbance regimes influence rainbow trout invasion success among five Holarctic regions. *Ecological Applications* 11:1438-1455.
- Ferrel, S. 2002. Rio Grande cutthroat trout candidate status review response paper. Santa Fe National Forest. Submitted to U. S. Fish and Wildlife Service, Albuquerque, New Mexico Ecological Services Field Office
- Franklin, I.R. 1980. Evolutionary change in small populations. Pp. 135–148 in M.E. Soulé and B. A. Wilcox (editors). *Conservation Biology: an Evolutionary-Ecological Perspective*. Sinauer Associates, Inc. Sunderland, Massachusetts.
- Frankham, R., J.D. Ballou, and D.A. Briscoe. 2002. *Conservation Genetics*. Cambridge University Press. Cambridge, United Kingdom.
- Garrett, G.P. and G.C. Matlock. 1991. Rio Grande cutthroat trout in Texas. *The Texas Journal of Science* 43:405-410.
- Gresswell, R.E. 1995. Yellowstone cutthroat trout. Pp. 36-54 in M. K. Young (editor). *Conservation Assessment for Inland Cutthroat Trout*. USDA Forest Service General Technical Report RM-GTR-256.

- Griffith, J.S. 1988. Review of competition between cutthroat trout and other salmonids. *American Fisheries Society Symposium* 4:134-140
- Harig, A.L. and K.D. Fausch. 2002. Minimum habitat requirements for establishing translocated cutthroat trout populations. *Ecological Applications* 12:535-551.
- Henderson, R., J.L. Kershner, and C.A. Toline. 2000. Timing and location of spawning by nonnative wild rainbow trout and native cutthroat trout in the South Fork Snake River, Idaho, with implications for hybridization. *North American Journal of Fisheries Management* 20:584-596.
- Hoerling, M. and A. Kumar. 2003. The perfect ocean for drought. *Science* 299:691-694.
- Holling, C.S. 1973. Resilience and stability of ecological systems. *Annual Review of Ecology and Systematics* 4:1-23.
- IPCC. 2021. 2021: Summary for Policymakers. In: *Climate Change 2021: The Physical Science Basis. Contribution of Working Group I to the Sixth Assessment Report of the Intergovernmental Panel on Climate Change* [Masson-Delmotte, V., P. Zhai, A. Pirani, S.L. Connors, C. Péan, S. Berger, N. Caud, Y. Chen, L. Goldfarb, M.I. Gomis, M. Huang, K. Leitzell, E. Lonnoy, J.B.R. Matthews, T.K. Maycock, T. Waterfield, O. Yelekçi, R. Yu, and B. Zhou (eds.)]. Cambridge University Press, Cambridge, United Kingdom and New York, NY, USA, pp. 3-32 doi:10.1017/9781009157896.001.
- Japhet, M., J. Alves, and T. Nesler. 2007. Rio Grande cutthroat trout status review for Colorado. Submitted to USFWS July 11, 2007.
- Jay, C.V., B.G. Marcot, and D.C. Douglas. 2011. Projected status of the Pacific walrus (*Odobenus rosmarus divergens*) in the twenty-first century. *Polar Biology* 34:1065-1084.
- Johnstone, H.C. and F.J. Rahel. 2003. Assessing temperature tolerance of Bonneville cutthroat trout based on constant and cycling thermal regimes. *Transactions of the American Fisheries Society* 132:92-99.
- Keleher, C.J. and F.J. Rahel. 1996. Thermal limits to salmonid distributions in the Rocky Mountain Region and potential habitat loss due to global warming: A geographic information system (GIS) approach. *Transactions of the American Fisheries Society* 125:1-13.
- Keppel, G., K.P. Van Niel, G.W. Wardell-Johnson, C.J. Yates, M. Byrne, L. Mucina, A.G.T. Schut, S.D. Hopper, and S.E. Franklin. 2012. Refugia: identifying and understanding safe havens for biodiversity under climate change. *Global Ecology and Biogeography* 21:393-404.
- Kundzewicz, Z.W., L.J. Mata, N.W. Arnell, P. Döll, P. Kabat, B. Jiménez, K.A. Miller, T. Oki, Z. Sen and I.A. Shiklomanov. 2007. Freshwater resources and their management. Contribution of Working Group II to the Fourth Assessment Report of the IPCC. Cambridge University Press, Cambridge, UK. Pages 173-210.
- Lassuy, D.R. 1995. Introduced species as a factor in extinction and endangerment of native fishes. *American Fisheries Society Symposium* 15:391-396.
- Lochmiller RL. 1996. Immunocompetence and animal population regulation. *Oikos* 76: 594-602.
- Marcot, B.G., R.S. Holthausen, M.G. Raphael, M.M. Rowland, and M.J. Wisdom. 2001. Using Bayesian belief networks to evaluate fish and wildlife population viability under land management alternatives from an environmental impact statement. *Forest Ecology and Management* 153:29-42.
- McCullough, D.A. 1999. A review and synthesis of effects of alterations to the water temperature regime on freshwater life stages of salmonids, with special reference to Chinook salmon. EPA 910-R-99-010. U.S. Environmental Protection Agency. Seattle, Washington. <http://www.critfc.org/tech/EPAreport.pdf>. October 3, 2011.
- McIntyre, J.D. and B.E. Rieman. 1995. Westslope cutthroat trout. Pages 1-15 in M. K. Young (editor).

- Conservation Assessment for Inland Cutthroat Trout. USDA Forest Service General Technical Report RM-GTR-256.
- Meeuwig, M.H., J.B. Dunham, J.P. Hayes, and G.L. Vinyard. 2004. Effects of constant and cyclical thermal regimes on growth and feeding of juvenile cutthroat trout of variable sizes. *Ecology of Freshwater Fishes* 13:208-216.
- Meisner, J.D. 1990. Potential loss of thermal habitat for brook trout, due to climatic warming, in two southern Ontario streams. *Transactions of the American Fisheries Society* 119:282–291.
- Miller, L. and S. Basset. 2013. Rio Grande cutthroat trout wildfire risk assessment. The Nature Conservancy, Santa Fe, New Mexico. 75 pp.
- Montgomery, D.R., E.M. Beamer, G.R. Pess, and T.P. Quinn. 1999. Channel type and salmonid spawning distribution and abundance. *Canadian Journal of Fisheries and Aquatic Science* 56:377-387
- Moyle, P.B. 1976. Inland fishes of California. University of California Press, Berkeley, California.
- Muhlfeld, C.C., S.T. Kalinowski, T.E. McMahon, M.L. Taper, S. Painter, R.F. Leary, and F.W. Allendorf. 2009. Hybridization rapidly reduces fitness of a native trout in the wild. *Conservation Biology, Biology Letters*. Doi:10.1098/rsbl.2009.0033
- Naeem, S. 1998. Species Redundancy and ecosystem reliability. *Conservation Biology* 12:39-45.
- Nakano, S., F. Kitano, and K. Maekawa. 1996. Potential fragmentation and loss of thermal habitats for charrs in the Japanese archipelago due to climatic warming. *Freshwater Biology* 36:711-722.
- Nash, L.L. and P.H. Gleick. 1993. The Colorado River Basin and climatic change. A report prepared for the U.S. Environmental Protection Agency, Office of Policy, Planning, and Evaluation, Climate Change Division. EPA 230-R-93-009.
- National Park Service. 2007. Final general management plan/wilderness study/environmental impact statement. Great Sand Dunes National Park and Preserve, Alamosa and Saguache Counties, Colorado. Available at: <http://parkplanning.nps.gov/document.cfm?parkID=67&projectId=11015&documentID=19561> Accessed August 4, 2013.
- Nehring, R.B. 2008. Whirling disease investigations. Federal Aid project F-237-R15.
- Nehring, R.B., J. Alves, J.B. Nehring, B. Felt. 2018. Elimination of *Myxobolus cerebralis* in Placer Creek, a Native Cutthroat Trout Stream in Colorado. *Journal of Aquatic Animal Health*, vol 30:264-279.
- New Mexico Department of Game and Fish (NMDGF). 2002. Long range plan for the management of the Rio Grande cutthroat trout in New Mexico. Santa Fe, New Mexico.
- New Mexico Department of Game and Fish (NMDGF). 2006. Comprehensive Wildlife Conservation Strategy for New Mexico. New Mexico Department of Game and Fish, Santa Fe, New Mexico. Available at [http://www.wildlife.state.nm.us/conservation/comp\\_wildlife\\_cons\\_strategy/cwcs.htm](http://www.wildlife.state.nm.us/conservation/comp_wildlife_cons_strategy/cwcs.htm). Accessed December 12, 2013.
- Newton, A.C., G.B. Stewart, A. Diaz, D. Golicher, and A.S. Pullin. 2007. Bayesian belief networks as a tool for evidence-based conservation management. *Journal of Nature Conservation* 15:144-160.
- Novinger, D.C. and F.J. Rahel. 2003. Isolation management with artificial barriers as a conservation strategy for trout in headwater streams. *Conservation Biology* 17:772-781.
- Patten, K.A. and M.B. Sloane. 2007. Rio Grande cutthroat trout status review. Comments by New Mexico Department of Game and Fish. Submitted to USFWS July 23, 2007.
- Patten, K.A., R. Castell, S. Denny, J. Dominguez, E. Frey, R. Hansen, J. Vega, and C.M. Wethington. 2007. Final Report for Federal Aid in Sport Fish Restoration Act. New Mexico Department of Game

and Fish, Santa Fe, New Mexico.

- Peterson, D.P., K.D. Fausch, and G.C. White. 2004. Population ecology of an invasion: Effects of brook trout on native cutthroat trout. *Ecological Applications* 14:754-772.
- Peterson, D.P., B.E. Rieman, J.B. Dunham, K.D. Fausch, and M.K. Young. 2008. Analysis of trade-offs between threats of invasion by nonnative brook trout (*Salvelinus fontinalis*) and intentional isolation for native westslope cutthroat trout (*Oncorhynchus clarkii lewisi*). *Canadian Journal of Fisheries and Aquatic Sciences* 65:557-573.
- Peterson, D.P., S.J. Wenger, B.E. Rieman, D.J. Isaak. 2013. Linking climate change and fish conservation efforts using spatially explicit decision support tools. *Fisheries* 38:112:127.
- Poff, N.L., M.M. Brinson, and J.W. Day, Jr. 2002. Aquatic ecosystems and global climate change. Prepared for the Pew Center on Global Climate Change.
- Pritchard, V.L. and D.E. Cowley. 2006. Rio Grande cutthroat trout (*Oncorhynchus clarkii virginalis*): a technical conservation assessment. U.S. Forest Service Rocky Mountain Region, Denver, Colorado.
- Pritchard, V. L., K. Jones and D. E. Cowley, D. E. 2007. Genetic diversity within fragmented cutthroat trout populations. *Transactions of the American Fisheries Society*, 136:606-623
- Pritchard, V.L., J.L. Metcalf, K. Jones, A.P. Martin, and D.E. Cowley. 2008. Population structure and genetic management of Rio Grande cutthroat trout (*Oncorhynchus clarkii virginalis*). *Conservation Genetics* 10:1209-1221.
- Rahel, F.J., C.J. Keleher, and J.L. Anderson. 1996. Potential habitat loss and population fragmentation for cold water fish in the North Platte River drainage of the Rocky Mountains: Response to climate warming. *Limnology and Oceanography* 41:1116-1123.
- Ray, A.J., J.J. Barsugli, K.B. Averyt, K. Wolter, M. Hoerling, N. Doesken, B. Udall, and R.S. Webb. 2008. Climate change in Colorado: a synthesis to support water resources management and adaptation. A report by the Western Water Assessment for the Colorado Water Conservation Board. 53pp.
- Redford, K.H., G. Amoto, J. Baillie, P. Beldomenico, E.L. Bennett, N. Clum, R. Cook, G. Fonseca, S. Hedges, F. Launay, S. Lieberman, G. M. Mace, A. Murayama, A. Putnam, J.G. Robinson, H. Rosenbaum, E.W. Sanderson, S.N. Stuart, P. Thomas, and J. Thorbjarnarson. 2011. What does it mean to successfully conserve a (vertebrate) species? *Bioscience* 61:39-48.
- Reed, D.H. 2005. Relationship between population size and fitness. *Conservation Biology* 19:563-568.
- Reed, D.H., J.J. O'Grady, B.W. Brook, J.D. Ballou, and R. Frankham. 2003. Estimates of minimum viable population sizes for vertebrates and factors influencing those estimates. *Biological Conservation* 113:23-34.
- Regier, H.A. and J.D. Meisner. 1990. Anticipated effects of climate change on freshwater fishes and their habitat. *Fisheries* 15:10-15.
- Regonda, S.K., B. Rajagopalan, M. Clark, and J. Pitlick. 2005. Seasonal shifts in hydroclimatology over the Western United States. *Journal of Climate* 18:372-384.
- RGCT Conservation Team. 2023. Conservation Agreement for Rio Grande Cutthroat Trout (*Oncorhynchus clarkii virginalis*) in the states of Colorado and New Mexico. New Mexico Department of Game and Fish, Santa Fe, NM. 28p.
- Rhymer, J.M. and D. Simberloff. 1996. Extinction by hybridization and introgression. *Annual Review of Ecology and Systematics* 27:83-109.
- Rieman, B.E., D. Isaak, S. Adams, D. Horan, D. Nagel, C. Luce, and D. Myers. 2007. Anticipated climate warming effects on bull trout habitats and populations across the interior Columbia River

- Basin. *Transactions of the American Fisheries Society* 136:1552-1565.
- Rinne, J.N. 1996. Short-term effects of wildfire on fishes and aquatic macroinvertebrates in the southwestern United States. *North American Journal of Fisheries Management* 16:653-658.
- Roberts, J.J., K.D. Fausch, D.P. Peterson, and M.B. Hooten. 2013. Fragmentation and thermal risks from climate change interact to affect persistence of native trout in the Colorado River basin. *Global Change Biology* 19:1383-1398.
- Rogers, K.B. 2013. Developing an alternative to the inland cutthroat protocol's population health index. Colorado Parks and Wildlife, Steamboat Springs, CO. 21pp.
- Schoennagel, T., T.T. Veblen, and W.H. Romme. 2004. The interaction of fire, fuels, and climate across Rocky Mountain forests. *BioScience* 54:661-676.
- Schrank, A.J., F.J. Rahel, and H.C. Johnstone. 2003. Evaluating laboratory-derived thermal criteria in the field: An example involving Bonneville cutthroat trout. *Transactions of the American Fisheries Society* 132:100-109.
- Schrank, A.J. and Rahel, F.J. 2004. Movement patterns in inland cutthroat trout (*Oncorhynchus clarki* utah): management and conservation implications. *Canadian Journal of Fisheries and Aquatic Sciences* 61:1528-1537.
- Seager, R., M. Ting, I. Held, Y. Kushnir, J. Lu, G. Vecchi, H-P. Huang, N. Harnik, A. Leetmaa, N-C. Lau, C. Li, J. Velez, and N. Naik. 2007. Model projections of an imminent transition to a more arid climate in SW North America. *Science* 316:1181-1184.
- Shaffer M.L. and B. A. Stein. 2000. Safeguarding our precious heritage. Pp. 301-322 *in* Stein, B.A., L.S. Kutner, and J.S. Adams, eds. *Precious Heritage: The Status of Biodiversity in the United States*. Oxford University Press.
- Shemai, B., R. Sallenave, and D.E. Cowley. 2007. Competition between hatchery-raised Rio Grande cutthroat trout and wild brown trout. *North American Journal of Fisheries Management* 27:315-325.
- Shuter, B.J., and J.D. Meisner. 1992. Tools for assessing the impact of climate change on freshwater fish populations. *GeoJournal* 28:7-20.
- Stewart, I.T., D.R. Cayan, and M.D. Dettinger. 2005. Changes toward earlier streamflow timing across Western North America. *Journal of Climate* 18: 1136-1155.
- Stumpff, W.K. 1998. Final Report for Federal Aid in fish Restoration Act, Statewide Fisheries Management Plan. Federal Aid Grant F-60-M, Rio Grande Cutthroat Trout Management. New Mexico Department of Game and Fish, Santa Fe, New Mexico.
- Sublette, J.E., M.D. Hatch, and M.E. Sublette. 1990. *The fishes of New Mexico*. The University of New Mexico Press, Albuquerque, New Mexico.
- U.S. Fish and Wildlife Service (FWS). 2008. Endangered and threatened wildlife and plants; status review for Rio Grande cutthroat trout. *Federal Register* 73:27900-27926
- U.S. Fish and Wildlife Service (FWS). 2011. Species assessment and listing priority assignment form: Rio Grande cutthroat trout. Albuquerque, NM.
- U.S. Forest Service (USFS). 2006. Rio Grande cutthroat trout accomplishments. Southwestern Region – Albuquerque, New Mexico. Rocky Mountain Region – Golden, Colorado. A report submitted to the USFWS.
- U.S. Forest Service (USFS). 2011. Watershed condition framework, a framework for assessing and tracking changes to watershed condition. FS – 977. Available at <http://www.fs.fed.us/publications/watershed/>. Accessed September 9, 2013.

- Young, M.K., P.M. Guenther-Gloss, and A.D. Ficke. 2005. Predicting cutthroat trout (*Oncorhynchus clarkii*) abundance in high-elevation streams: revisiting a model of translocation success. *Canadian Journal of Fisheries and Aquatic Sciences* 62:2399-2408.
- Wagner, E.J., R.E. Arndt, and M. Brough. 2001. Comparative tolerance of four stocks of cutthroat trout to extremes in temperature, salinity, and hypoxia. *Western North American Naturalist* 61:434-444.
- Westerling, A.L., H.G. Hidalgo, D.R. Cyan, and T.W. Swetnam. 2006. Warming and earlier spring increase Western U.S. forest wildfire activity. *Science* 313:940-943.
- Zeigler, M.P., S.F. Brinkman, C.A. Caldwell, A.S. Todd, M.S. Recsetar, and S.A. Bonar. 2013. Upper thermal tolerances of Rio Grande cutthroat trout under constant and fluctuating temperatures. *Transactions of the American Fisheries Society* 142:1395-1405.
- Zeigler, M.P., K.B. Rogers, J.J. Roberts, A.S. Todd, K.D. Fausch. 2019. Predicting Persistence of Rio Grande Cutthroat Trout Populations in an Uncertain Future. *North American Journal of Fisheries Management* 39:819-848.

**APPENDIX A. Conservation Actions Ongoing and Completed for Rio Grande Cutthroat Trout (RGCT) since 2000 by Conservation Team**

Project	Responsible Party	Scheduled Year of Completion	Cost Estimate	Project Status	Description
<b>Conservation Actions in Colorado</b>					
Costilla Creek / Glacier Lake Reclamation	CPW	2002	\$29,371	Complete	Removed all fish in the treatment area and reintroduced native RGCT
Big Springs Creek Reclamation	CPW	2003	\$10,200	Complete	Removed all fish in the treatment area and reintroduced native Rio Grande sucker and RGCT
Conejos River, Lake Fork Reclamation	CPW	2004	\$22,150	Complete	Removed all fish in the treatment area and reintroduced native Rio Grande sucker and RGCT
Placer Creek Reclamation	CPW	2007	\$35,384	Complete	Removed all fish in the treatment area and reintroduced native Rio Grande sucker and RGCT
Placer Creek Reclamation	CPW	2009	\$32,400	Complete	Removed all fish in the treatment area and reintroduced native Rio Grande sucker and RGCT. Sampling in 2008 revealed that trout survived the 2007 treatment.
Upper Costilla Creek	CPW	2014	\$18,578	Complete	Removed all fish in the treatment area and reintroduced native RGCT
Roaring Fork/Haypress	CPW	2015	\$16,700	Complete	Re-treated in 2016 due to missed fish
Roaring Fork/Haypress	CPW	2016	\$27,743	Complete	Removed all fish in the treatment area and reintroduced native RGCT
Upper Sand Creek drainage	CPW	2020	\$88,662	Complete	Removed all fish in the treatment area and reintroduced native RGCT
Genetic Testing	CPW	2002 - 2022	\$180,000	Ongoing	Assess genetic purity of RGCT populations
Cutthroat trout production (\$7,500 Annually)	CPW	2002-2011	\$75,000	Complete	10 year total cost to produce 1,056,042 fingerling RGCT, not including stocking costs
Cutthroat trout production	CPW	2012-2022	\$46,317	Ongoing	10 year total cost to produce 661,676 fingerling RGCT, not including stocking costs
Operations Cost (\$16,631 Annually)	CPW	2002 - 2022	\$332,620	Ongoing	Supplies, equipment, travel

Project	Responsible Party	Scheduled Year of Completion	Cost Estimate	Project Status	Description
Fish Biologist - RGCT Labor (\$50,000 Annually)	CPW	2002 - 2022	\$1,000,000	Ongoing	Labor
Senior Fish Biologist - RGCT Labor (\$17,000 Annually)	CPW	2002 - 2022	\$340,000	Ongoing	Labor
Drake Barrier Project	USFWS - Partners for Fish & Wildlife	2003	\$7,500	Complete	Construction of new fish barrier on Carnero Creek
Cuates, Torcido, & Jaroso Creek Fish Barriers	USFWS - Partners for Fish & Wildlife	2006	\$110,000	Complete	New barriers on Cuates, Torcido, & Jaroso Creeks
Repair TU barriers on Placer Creek	USFWS - Partners for Fish & Wildlife	2009	\$16,190	Complete	Repair of 3 barriers built by TU on Placer Creek
Alamosito Creek Barrier	USFWS - Partners for Fish & Wildlife	2010	\$11,532	Complete	New Rock Barrier and repair barrier on Cuates Creek
Big Springs Creek Fen Protection	USFS	2007	\$3,500	Complete	Protected important fen/spring source from grazing impacts
Big Springs Creek Culvert replacement(s)	USFS	2009	\$36,125	Complete	Replaced two road culverts to allow fish passage
Big Springs Creek Picnic Area Improvement	USFS	2010	\$5,000	Complete	Installed foot bridges across main spring source to reduce impacts to spring and reduce sedimentation
Big Springs Creek Barrier Repair	USFS	2011	\$4,500	Complete	Completed maintenance on existing barrier
Middle Fork Carnero Creek Barrier Construction	USFS	2002	\$12,000	Complete	Constructed fish migration barrier
Middle Fork Carnero Creek Storm King Culvert Replacement	USFS	2010	\$12,500	Complete	Replaced Storm King road culvert to allow fish passage
Middle Fork Carnero Creek Road Closures	USFS	2011	\$2,500	Complete	Closed and barricaded two unauthorized roads in the riparian area
Middle Fork Carnero Creek 41G Culvert Replacement	USFS	2012	\$23,415	Complete	Replace culvert on FSR 41G that will allow fish passage
Middle Fork Carnero Creek Spring Developments	USFS	2012	\$29,000	Complete	Two spring development projects to augment stream flow



Project	Responsible Party	Scheduled Year of Completion	Cost Estimate	Project Status	Description
North Fork Carnero Creek Road Culvert Replacement	USFS	2009	\$12,050	Complete	Replaced road culvert to allow fish passage
Prong Creek Culvert Replacement	USFS	2009	\$24,000	Complete	Replaced two road culverts to allow fish passage
Cave Creek Culvert Removal	USFS	2010	\$4,500	Complete	Removed road culvert that was not fish passable and replaced with a hardened crossing
Wolf Creek Culvert Repair	USFS	2010	\$22,500	Complete	Modified existing railroad culvert barrier that protects historic RGCT population
Lake Fork Conejos Barrier Repair	USFS	2005	\$12,400	Complete	Increased height of barrier and installed concrete splashpad
Grizzly Creek Genetic Testing	FS	2016	\$5,000	Complete	Tissue samples of unknown cutthroat trout - verified as mixed genetics (Site previously known as S***w Creek)
Middle Fork Carnero Creek Culvert Replacement	FS	2019	\$150,000	Complete	Replace culvert with open arch design at Middle Fork Carnero Creek at Carnero Guard Station
South Fork Saguache Creek Wet Meadow Restoration	FS	2022	\$10,000	Complete	Restore wet meadow function with installation of 6 instream habitat structures
Middle Fork Saguache Creek Wet Meadow Restoration	FS	2022	\$10,000	Complete	Restore wet meadow function with installation of 6 instream habitat structures
Del Norte High School Snorkel Event - Education	FS	2022	\$2,000	Complete	Conducted Snorkel and Education event with students from Del Norte high school on Rio Grande Cutthroat Trout.
La Garita Creek Evaluation	USFS/BLM	2008	\$10,000	Complete	Assessment work to evaluate if drainage is suitable for RGCT reintroduction
La Garita Creek Culvert Replacement	USFS/BLM	2008	\$63,000	Complete	Replaced three road culverts to allow fish passage
Genetic Analysis	USFS	2001 - 2003	\$24,700	Complete	Provide funding for RGCT genetic analysis for populations in CO
Stream Crossing Assessments	USFS/BLM	2006 - 2007	\$15,000	Complete	Conducted stream crossing assessments on all Core/Cons Core RGCT streams
Fish Biologist - Labor RGCT Program Management (\$15,000 Annually)	USFS/BLM	2002 - 2022	\$300,000	Ongoing	Fish Bio's commitment to RGCT activities and projects

Project	Responsible Party	Scheduled Year of Completion	Cost Estimate	Project Status	Description
Ponds removed at Sand Creek, Great Sand Dunes National Park and Preserve	NPS	2012	\$500,000	Complete	National Park Service removed constructed ponds on Sand Creek to break whirling disease cycle and prepare for reclamation of RGCT
Sand Creek Reclamation project	NPS	2016	\$550,000	Ongoing	NEPA compliance to start in 2014
<b>2002 - 2022 Total RGCT Costs in Colorado</b>			<b>\$4,244,037</b>		
<b>Conservation Actions in New Mexico</b>					
Costilla Creek / Glacier Lake Reclamation	NMDGF	2002	\$75,000	Complete	Remove all fish in the treatment area and reintroduce native Rio Grande cutthroat trout
Rio Capulin Reintroduction	NMDGF	2006	\$10,000	Complete	Stocked RGCT post-fire
Comanche Creek Barrier Construction	USFS/TU	2007	\$75,000	Complete	Constructed fish migration barrier
Pinelodge Creek	NMDGF	2008	\$5,000	Complete	Stocked RGCT post-fire
Upper Comanche Creek	NMDGF	2008	\$200,000	Complete	Remove all fish in the treatment area and reintroduce native Rio Grande cutthroat trout
Costilla Creek	NMDGF	2008	\$15,000	Complete	Remove all fish in the treatment area and reintroduce native Rio Grande cutthroat trout
Santistevan Creek Culvert Modification	TEI	2009	\$4,500	Complete	Constructed fish migration barrier
Santistevan Creek/Casias Lakes	NMDGF	2010	\$25,000	Complete	Remove all fish in the treatment area and reintroduce native Rio Grande cutthroat trout
Santa Clara Creek Restoration Project	Santa Clara Pueblo/ USFWS	2010	\$136,500	Complete	Remove all fish in the treatment area to reintroduce native Rio Grande cutthroat trout

Project	Responsible Party	Scheduled Year of Completion	Cost Estimate	Project Status	Description
#2 Creek Barrier Construction	TEI	2010	\$70,069	Complete	Constructed fish migration barrier
#2 Creek	NMDGF	2011	\$45,000	Complete	Remove all fish in the treatment area and reintroduce native Rio Grande cutthroat trout
Allen Creek Barrier Construction	TEI	2012	\$13,753	Complete	Constructed fish migration barrier
Dominguez Creek Culvert Modification	TEI	2012	\$4,500	Complete	Constructed fish migration barrier
Allen Creek	NMDGF	2012	\$5,000	Complete	Remove all fish in the treatment area and reintroduce native Rio Grande cutthroat trout
Dominguez Creek	NMDGF	2012	\$3,000	Complete	Remove all fish in the treatment area and reintroduce native Rio Grande cutthroat trout
Alamitos Creek Barrier Construction	USFS/TU	2012	\$60,000	Complete	Constructed fish migration barrier
Beaver Creek, Long Canyon, Seven Lakes	NMDGF/TEI	2014	\$110,000	Complete	Remove all fish in the treatment area and reintroduce native Rio Grande cutthroat trout
Casias Creek, Costilla Creek, Costilla Reservoir	NMDGF/TEI	2016	\$526,000	Complete	Remove all fish in the treatment area and reintroduce native Rio Grande cutthroat trout
Rio Costilla Barrier	NMDGF	2016	\$580,000	Complete	Design and construct fish migration barrier
Leandro Creek Genetics	TEI	2017	\$8,659	Complete	Genetic analysis to investigate RBT hybridization in Leandro Creek
Leandro Creek Barrier	TEI	2018	\$18,904	Complete	Construct barrier to isolate RGCT in Leandro Creek
Upper Rio Costilla Habitat Restoration	NMDGF	2018	\$523,620	Complete	Improve habitat in Rio Costilla above Comanche Point
Costilla and Casias Barrier Removal	TEI/USFWS	2020	\$60,000	Complete	Costilla and Casias Creek treatment barrier removal. Remove all barriers constructed during chemical treatment.
Willow Creek Barrier	NMDGF	2020	\$598,000	Complete	Design and construct fish migration barrier
Vermejo River Genetics	TEI	2022	\$10,500	Complete	Genomic analysis of RGCT in Vermejo River watershed

Project	Responsible Party	Scheduled Year of Completion	Cost Estimate	Project Status	Description
Middle Ponil Creek	NMDGF	2022	\$42,000	Complete	Remove all fish in the treatment area and reintroduce native Rio Grande cutthroat trout
Rio Costilla and Lower Comanche Creek	NMDGF	2022	\$205,000	Complete	Remove all fish in the treatment area and reintroduce native Rio Grande cutthroat trout
Willow Creek Restoration	NMDGF	2023	\$50,000	Complete	Remove all fish in the treatment area and reintroduce native Rio Grande cutthroat trout
RGCT Broodstock Genetic Analysis	NMDGF	2023	\$40,000	Complete	Assess genetics of Lower Rio Grande GMU hatchery broodstock
Rio Costilla Habitat Restoration	NMDGF	2023	\$597,120	Ongoing	Improve habitat in Rio Costilla from fish barrier to Comanche Point
Annual Operation (\$10,000 annually)	TEI	2012 - 2022	\$100,000	Ongoing	Annual cost of monitoring and other associated activities with conservation of RGCT.
Genetic Testing (\$15,000 annually)	NMDGF	2002 - 2022	\$300,000	Ongoing	Assess genetic purity of RGCT populations
Seven Springs Hatchery Operating Budget	NMDGF	2002 - 2022	\$8,800,000	Ongoing	Produce RGCT for conservation and recreation stocking
RGCT Program Operational Costs	NMDGF	2002-2022	\$5,400,000	Ongoing	Operational costs associated with RGCT program not specifically listed
Tanques Creek Barrier Construction	USFS/TU	2013	\$64,600	Ongoing	Constructed fish migration barrier
RGCT Education	USFS	Ongoing	\$211,997	Ongoing	Developed a Rio Grande Cutthroat Trout Lifecycle game & curricula. Developed a RGCT mascot, "Carlos Cutthroat." Designed a temporary tattoo for kids featuring a Rio Grande cutthroat trout as part of the Respect the Rio program.
Habitat Inventory of upper Rio Cebolla, Rio Nambe, Rio Capulin, Rio Mora, Cañones, Rio de las Vacas, Rio Frijoles, Pecos River, Chihuahueros Creek, Polvadera Creek, Cave Creek, Rio Puerco, Capulin Canyon	USFS	Ongoing	\$350,000	Ongoing	161 miles of habitat inventory in Rio Grande cutthroat trout occupied streams, using USFS Region 3 Stream Habitat Inventory protocol

Project	Responsible Party	Scheduled Year of Completion	Cost Estimate	Project Status	Description
Temperature Monitoring of Cañones Creek, Capulin Creek, Chihuahueros Creek, Polvadera Creek, Jack's Creek, La Jara Creek, Rio Cebolla, Rio de las Vacas, Rio del Oso, Rio Frijoles, Rio Medio, Rio Mora, Rio Puerco, Rito Peñas Negras, Cave Creek, Dalton Creek, Doctor Creek, Rio Nambe, Peralta Creek	USFS	Ongoing	\$20,000	Ongoing	Thermograph placement & download for temperature monitoring in Rio Grande cutthroat trout streams
Cañones Creek Habitat Improvement	USFS	2004	\$49,750	Complete	Large woody debris was placed in the stream and on the floodplain to create instream habitat, reduce cattle trampling on the streambanks, and close off an ATV trail across the stream. A livestock water trick tank was built to pull cattle away from the stream and into the uplands.
Rio Cebolla Willow Planting	USFS	2005	\$5,500	Complete	Willows were planted along the Rio Cebolla to stabilize stream banks, provide shade to the stream, and expand beaver population along the river corridor
Rio de las Vacas Barrier Repair	USFS	2009	\$10,000	Complete	Increased height of barrier and repaired splashpad
Peralta Canyon Watershed Habitat Improvement Project	USFS	2009	\$25,000	Complete	1) Ballards were placed at the end of FR280 to keep full-size vehicles and ATVs from accessing the stream; 2) livestock/elk exclusion fencing was placed around an area designated by the fisheries biologist where the ungulate impacts have caused braiding and sediment into stream; 3) large wood debris was added to the stream by dropping >12-14" trees across stream and in riparian corridor; 4) a bridge crossing was placed on the trail at Peralta Creek.
Polvadera Creek Riparian Improvements	USFS	2009	\$20,000	Complete	Road closure via installation of a boulder barrier & repair of riparian fence to keep cattle out; completed by YCC through §319 grant
Rio Cebolla Riparian Improvements	USFS	2009	\$17,000	Complete	4 new gates along 5.5 miles of the upper Rio Cebolla to keep cattle & OHVs out of stream; funded through §319 grant

Project	Responsible Party	Scheduled Year of Completion	Cost Estimate	Project Status	Description
Rito Café Stream Habitat Improvements	USFS	2009	\$10,000	Complete	The goal of the project was to improve stream habitat by increasing the amount of large woody debris in and adjacent to approx. 3.8 miles of Rito Penas Negras and Rito Cafe.
Rio Cebolla Riparian Improvements	USFS	2011	\$16,700	Complete	Protect sustaining & restore degraded habitat; cleared encroaching conifer from 5 acres of historical meadows along the upper Rio Cebolla. To increase water availability, increase grasses and forbs and water filtration in the riparian area.
Rio Cebolla Riparian Improvements	USFS	2011	\$5,000	Complete	Protect sustaining & restore degraded habitat; 16 volunteers from New Mexico Trout repaired fencing along the Rio Cebolla to prevent cattle and vehicles from accessing the riparian meadows on the Rio Cebolla upstream of McKinney Dam.
Cañones Creek Riparian Improvements	USFS	2010	\$60,000	Complete	Water-bar and reconstruct portions of the Cañones National Recreation Trail (#97), along with portions of trails on Mesa del Media and Mesa Escoba, which drain into Cañones Creek
Polvadera Creek Riparian Improvements	USFS	2011	\$2,500	Complete	Protect sustaining & restore degraded habitat; repaired three miles of riparian fence damaged during flooding following the 2010 South Fork wildfire
Wildfire coordination and BAER assessments for the South Fork, Pacheco, and Las Conchas wildfires	USFS	2010-2011	\$10,000	Complete	Coordinated work around RGCT streams with Las Conchas, Pacheco, and South Fork Fire Incident Mgt Teams, District Resource Advisors, and Burned Area Emergency Response Teams
Fish Biologist & Student- Labor RGCT Program Management (\$15,000 Annually)	USFS	2002 - 2022	\$300,000	Ongoing	Fish Biologist's commitment to RGCT activities and projects

Project	Responsible Party	Scheduled Year of Completion	Cost Estimate	Project Status	Description
Carson National Forest-wide population monitoring	USFS	2001-2012	\$26,800	Complete	Population monitoring of Frijoles creek, Palociento creek, Comanche creek, Tio Grande, Santa Barbara, San Cristobal, La Press, San Antonio, Angostura, Tanques, Arose, La Junta, Policarpio, Alamitos, Cabresto Creek, Frijoles, Agua Piedra, Comales, Osha, La Presa, Sardinias.
Carson National Forest-wide exotic removals	USFS	2001-2012	\$7,000	Ongoing	Removal of nonnative trout from Frijoles creek, Luna creek, Tio Grande creek, Palociento creek, Santa Barbara drainage, Tanques, Palociento
Wild spawn	USFS	2001-2012	\$6,000	Complete	Field spawn of wild Rio Grande cutthroat trout from El Rito creek and Policarpio
Barrier maintenance	USFS	2001-2012	\$12,000	Ongoing	Maintain and improve fish migration barriers on Palociento creek, Frijoles creek, Tio Grande Creek, Tanques creek
Comanche Barrier Hydrological analysis contract	USFS	2001	\$10,000	Complete	Contract for hydrological analysis of potential barrier sites along Comanche creek in preparation of barrier design and construction.
North Ponil/ McCrystal creek habitat inventory	USFS	2004	\$18,200	Complete	Habitat inventory survey done to facilitate future habitat improvement projects
Watershed improvement project to improve RGCT habitat and water quality in Rito de la Olla and Comanche creek.	USFS	2003 -2010	\$22,800	Complete	Closing 12 miles of road and drainage improvement to reduce sediment in Rito de la Olla, and construction of 2 miles of exclosure on Comanche creek. Riparian willow exclosures
Fish Migration study	USFS	2003	\$2,000	Complete	Collected and analyzed data using Fish passage and Fish Xing software to determine if selected culverts were acting as fish migration barriers.
Santa Barbara restoration.	USFS	2003	\$9,000	Complete	Population surveys, macroinvertebrate collection and analysis, genetic collection, and removal of nonnative trout.
Rio Costilla restoration	USFS	2002-2012	\$99,900	Complete	NEPA clearance for habitat improvement projects, Population monitoring, barrier permit acquisition, habitat restoration.

Project	Responsible Party	Scheduled Year of Completion	Cost Estimate	Project Status	Description
Carson National Forest genetics and disease monitoring	USFS	2002-2004	\$9,600	Complete	Collecting genetics Carson National Forest-wide and collecting fish forest wide to have disease analysis done.
McCrystal Creek habitat improvement project	USFS	2002	\$11,000	Complete	Riparian exclosures installed to reduce grazing impacts on McCrystal Creek.
Aquatics program administration associated with RGCT	USFS	2002-2022	\$360,000	Ongoing	Aquatics program Manager and Forest Fisheries Biologist committed to RGCT activities and projects (\$20,000 annually)
Alamitos barrier	USFS	2011-12	\$5,800	Ongoing	NEPA clearance to construct Migration Barrier.
Comanche Creek and Costilla Creek habitat Restoration	USFS/NMDGF	2024	\$1,000,000	Ongoing	Ongoing restoration of riparian areas in Comanche and Costilla Creek watersheds.
Upper San Antonio Creek (Carson) Improvements	USFS/TU	2027	\$150,000	Ongoing	Restoration of riparian and instream function in Upper San Antonio Creek.
Aquatic Organism Passage Projects Valle Vidal	USFS/USFWS/NMDGF/TU	2027	\$2,000,000	Ongoing	Restoration of up to 6 crossings to improve passage for Rio Grande Cutthroat trout.
El Rito Creek Restoration	USFS/TU/NMDGF	2028	\$150,000	Ongoing	Restoration of riparian and instream function in Upper El Rito Creek.
Polvadera Creek Sediment Stabilization and Ecosystem Restoration Project	USFS	2028	\$250,000	Ongoing	Project Objectives: 1) Reduce and Prevent Channel Erosion and Incision; 2) Improve Aquatic Habitat Condition; 3) Promote Native Vegetation Establishment; 4) Improve Streambank Stabilization and Modification; 5) Promote Healthy Wetlands; 6) Promote education and outreach to local communities by enlisting volunteers to partner on the project.



Project	Responsible Party	Scheduled Year of Completion	Cost Estimate	Project Status	Description
Chihuahueros Creek Headwaters Restoration Project	USFS	2028	\$343,000	Ongoing	Project objectives include; preventing the spread of erosion, reducing sedimentation, increasing riparian vegetation, reducing conifer encroachment, improving instream habitat, providing stream bank shading, restoring channel morphology, and introducing coarse woody debris. By addressing these objectives through restoration treatments, the hope is to ensure long term success of the aboriginal population of RGCT and improve watershed function of Chihuahueros Creek.
Upper Rio Cebolla Watershed Restoration Project	USFS	2028	\$379,000	Ongoing	The project will facilitate the reestablishment of ecosystem function through restoring a cottonwood and willow overstory, increasing channel complexity and floodplain connectivity through the addition of in-stream structures, and protection of riparian habitat from grazing, benefiting Rio Grande Cutthroat, New Mexico Meadow Jumping Mouse and other sensitive and threatened species.
Jacks Creek Fish Barrirer	USFS/NMDGF	2028	\$720,000	Ongoing	As part of the native species restoration efforts, a fish barrier on Jack's Creek is being considered by New Mexico Department of Game and Fish (NMDGF). The study reach is located on United States Forest Service (USFS) land in the Santa Fe National Forest and would create a permanent barrier to upstream fish travel. The primary target exclusion species are brook, brown, and rainbow trout. Jacks Creek is a tributary to the upper Pecos River.

Project	Responsible Party	Scheduled Year of Completion	Cost Estimate	Project Status	Description
Upper Rio Cebolla Groundwater Monitoring	USFS	2030	\$5,000	Ongoing	Record the pre-project ground water levels and collect ongoing data during and after project implementation to quantify ground water changes associated with in-stream restoration.
Upper Rio Cebolla Aquatic Organism Passage Project	USFS	2028	\$200,000	Ongoing	Improve road/stream crossings where NFSR 527 and NFSR 314 cross the Rio Cebolla by replacing existing undersized culverts with appropriately sized structures to allow for passage of aquatic species. Project will enhance other ongoing stream restoration projects on the Upper Rio Cebolla intended to improve habitat for Rio Grande Cutthroat Trout.
Rito Penas Negras Stream Restoration and Erosion Mitigation Project	USFS	2028	\$339,080	Ongoing	Project will install instream structures to raise the water table, catch sediment, alter the stream grade, induce meandering and habitat complexity to protect and restore riparian areas within Rito Penas Negras.
Temperature Monitoring of San Antonio Creek	USFS	2040	\$5,000	Ongoing	Thermograph placement & download for temperature monitoring in Rio Grande cutthroat trout streams
<b>2001 – 2022 Total RGCT Costs in New Mexico</b>			<b>\$26,036,352</b>		
<b>2001 – 2022 TOTAL RGCT COSTS</b>			<b>\$30,280,389</b>		

**APPENDIX B. Conservation Actions to be Implemented under the Conservation Strategy.  
1-Year Plan, 2024, Rio Grande Cutthroat Trout Conservation Strategy**

Conservation Actions		GMU				
		Rio Grande Hdws.	Lower Rio Grande	Pecos	Canadian	Caballo
<b>Objective 1: Identify and characterize all RGCT Core and Conservation Populations and Occupied Habitat.</b>						
1.1	Population Monitoring	Roaring Fork Creek, Upper Sand Creek Lake, Lower Sand Creek Lake, Sand Creek, Osier Creek, Cascade Creek	Guaje Canyon, Rio de las Trampas, Bitter Creek		Middle Ponil Creek	
1.2	Genetic Analysis	Pitkin Captive Brood Stock	Rio de las Trampas, Rito Angostura		McCrystal Creek	
<b>Objective 2: Secure and enhance conservation populations.</b>						
2.1	Restricting introduction of nonnative fish species	CPW Regulations: Chapter 0, Article VII, #013 Release of Aquatic Wildlife; Appendix C Cutthroat Trout Waters NMAC 19.35.7: Importation of live non-domestic animals, birds, and fish				
2.2	Restricting spread of disease and invasive species	Colorado Parks and Wildlife Commission Police D-9; CPW Regulations: Chapter 0, Article VII, #014 NMAC 19.30.14: Providing for the control and prevention of the spread of aquatic invasive species in New Mexico				
2.3	Removing nonnative fish species	Alamosito Creek, Jim Creek, Big Springs Creek				

Conservation Actions		GMU				
		Rio Grande Hdws.	Lower Rio Grande	Pecos	Canadian	Caballo
2.4	Regulating angling and enforcement	CPW Regulations: Chapter 1, Article II, #108 Special Regulation Waters NMAC 19.31.4.11: Daily bag, possession limits, and requirements or conditions				
2.5	Constructing in-channel barriers	Wagon Creek		Jacks Creek barrier construction preparation	Middle Ponil Creek barrier evaluation	
2.6	Maintaining sources of genetically pure RGCT	Haypress Lake		Field spawn for Seven Springs Hatchery broodstock		
<b>Objective 3: Restore RGCT Populations</b>						
3.1	Establishing and/or maintaining RGCT populations (Table 3)	Sand Creek Phase 2, North Fork Trinchera, Rito Hondo Creek, Rito Hondo Lake	Rio Costilla Stocking	Willow Creek Stocking		
3.2	Maintaining genetic purity of the species among the basins	Conduct genetic analysis on selected populations, continued use of triploid rainbow trout throughout New Mexico, broodstock developed to maintain basin-scale lineages				
<b>Objective 4: Secure and enhance watershed conditions</b>						

Conservation Actions		GMU				
		Rio Grande Hdws.	Lower Rio Grande	Pecos	Canadian	Caballo
4.1	Enhancing and protecting instream and riparian habitat	North Fork Culebra Creek, Jim Creek. Replace culverts in South Fork Saguache Creek. Wet meadow restoration in Osier Creek, Cascade Creek, Rio de Los Pinos and Cat Creek.				
4.2	Developing and implementing habitat monitoring protocol	Continue to develop habitat monitoring protocol Follow-up fish & habitat monitoring for RGCT streams impacted by wildfires				
<b>Objective 5: Public Outreach</b>						
5.1	Public Outreach	Oral presentation at Gila/Rio Grande chapter of Trout Unlimited meeting, "Respect the Rio" program on Santa Fe NF, Rio Grande cutthroat trout lifecycle curriculum at Water Festivals in Albuquerque, Rio Rancho, Santa Fe (~ 1,000 kids & adults); and local community events (~ 300 kids & adults) Rio Grande Hdws.: Oral presentations to San Luis Valley chapter of Trout Unlimited, Beaver Creek, Conejos County and Costilla County Youth Naturally conservation camps. Publish conservation strategy and agreement on CPW website.				
<b>Objective 6: Data Sharing</b>						
6.1	Annual meeting will be held for database updates	Annual database update meeting, March 2024				
6.2	Maintaining and sharing database between signatories.	Continue contract with database manager				

Conservation Actions		GMU				
		Rio Grande Hdws.	Lower Rio Grande	Pecos	Canadian	Caballo
<b>Objective 7: Coordination</b>						
7.1	Attending annual range-wide coordination meeting	Annual Meeting, January 2024, Santa Fe, NM				
7.2	Coordinating annual work plan among agencies	Maintain relationships and coordinate annual work plans among agencies through personal communication and meeting attendance				
7.3	Reporting results of monitoring	Compile Accomplishments Report for 2023, enter monitoring data into range-wide database				
7.4	Assessing success of Conservation Strategy and making changes as needed	Review Conservation Strategy				

**10-Year Plan, 2024-2034, Rio Grande Cutthroat Trout Conservation Strategy**

Conservation Actions		GMU				
		Rio Grande Hdws.	Lower Rio Grande	Pecos	Canadian	Caballo
<b>Objective 1: Identify and characterize all RGCT Core and Conservation Populations and Occupied Habitat.</b>						
1.1	Population Monitoring	Monitor 10 populations/year	Monitor 20 populations	Monitor 10 populations	Monitor 5 populations	Monitor 1 population
1.2	Genetic Analysis	Collect genetic specimens as necessary to determine purity of populations				
<b>Objective 2: Secure and enhance conservation populations.</b>						
2.1	Restricting introduction of nonnative fish species	CPW Regulations: Chapter 0, Article VII, #013 Release of Aquatic Wildlife; Appendix C Cutthroat Trout Waters NMAC 19.35.7: Importation of live non-domestic animals, birds, and fish				
2.2	Restricting spread of disease and invasive species	Colorado Parks and Wildlife Commission Police D-9; CPW Regulations: Chapter 0, Article VII, #014 NMAC 19.30.14: Providing for the control and prevention of the spread of aquatic invasive species in New Mexico				
2.3	Removing nonnative fish species	Conduct nonnative trout removals as necessary				
2.4	Regulating angling and enforcement	CPW Regulations: Chapter 1, Article II, #108 Special Regulation Waters NMAC 19.31.4.11: Daily bag, possession limits, and requirements or conditions				

Conservation Actions		GMU				
		Rio Grande Hdws.	Lower Rio Grande	Pecos	Canadian	Caballo
2.5	Constructing in-channel barriers	Improve or install barriers to facilitate possible restoration projects				
2.6	Maintaining sources of genetically pure RGCT	Maintain genetic purity of broodstocks	Continue field and hatchery spawn operations	Continue field and hatchery spawn operations	Conduct field spawn operations as needed	
<b>Objective 3: Restore RGCT Populations</b>						
3.1	Establishing and/or maintaining RGCT populations (Table 4)	Restore 3-5 conservation populations	Restore 3-5 conservation populations	Restore 1-3 conservation populations	Restore 1-3 conservation populations	Restore conservation population as needed
3.2	Conduct genetic analysis on selected populations, continued use of triploid rainbow trout statewide in NM, broodstock developed to maintain basin-scale lineages					
<b>Objective 4: Secure and enhance watershed conditions</b>						
4.1	Enhancing and protecting instream and riparian habitat	Habitat enhancement on up to 5 miles of RGCT stream, continue culvert & barrier assessments, repairs, and replacements	Habitat enhancement on 5 miles of RGCT stream; 20 acres of watershed/riparian protection	Habitat enhancement on 5 miles of RGCT stream; 20 acres of watershed/riparian protection		
4.2	Developing and implementing habitat monitoring protocol	Implement habitat monitoring protocol Fish & habitat monitoring for RGCT streams impacted by wildfire Fish and habitat monitoring on RGCT streams associated with forest management activities				



Conservation Actions		GMU			
		Rio Grande Hdws.	Lower Rio Grande	Pecos	Canadian
<b>Objective 5: Public Outreach</b>					
5.1	Public Outreach	<p>“Respect the Rio” program on Santa Fe NF, publicize fishing opportunities for RGCT, present information at NGO and other public meetings</p> <p>Rio Grande cutthroat trout lifecycle curriculum at Water Festivals in Albuquerque, Rio Rancho, Santa Fe (annually ~ 1,000 kids &amp; adults); local community events (annually ~ 300 kids &amp; adults); updated Forest website with curriculum and education materials</p> <p>Rio Grande Hdws.: Oral presentations to San Luis Valley chapter of Trout Unlimited, Beaver Creek, Conejos County and Costilla County Youth Naturally conservation camps. Update RGCT conservation brochure. Publish conservation strategy and agreement on CPW website</p>			
<b>Objective 6: Data Sharing</b>					
6.1	Annual meeting will be held for database updates	Attend annual database update meeting			
6.2	Maintaining and sharing database between signatories.	Maintain, improve, and update range-wide database			
<b>Objective 7: Coordination</b>					
7.1	Attending annual range-wide coordination meeting	Attend annual range-wide coordination meeting			
7.2	Coordinating annual work plan among agencies	Maintain relationships and coordinate annual work plans among agencies through personal communication and meeting attendance			
7.3	Reporting results of monitoring	Compile Accomplishments Reports, enter monitoring data into range-wide database			
7.4	Assessing success of Conservation Strategy and making changes as needed	Complete 10-year Status Assessment Report; Renew Conservation Agreement			

**APPENDIX C. Progress toward 10-year goals (2014-2024) identified in the 2013 Rio Grande Cutthroat Trout Conservation Strategy.**

Conservation Actions		GMU				
		Rio Grande Hdws.	Lower Rio Grande	Pecos	Canadian	Caballo
<b>Objective 1: Identify and characterize all RGCT Core and Conservation Populations and Occupied Habitat.</b>						
1.1	Population Monitoring	Monitor 10 populations/year	Monitor 10 populations	Monitor 8 populations	Monitor 5 populations	Monitor one population every couple of years
	<b>Progress toward Conservation Strategy Goals</b>	<b>Complete:</b> Monitored an average of 13 populations/year.	<b>Complete:</b> Monitored 29 populations.	<b>Complete:</b> Monitored 12 populations.	<b>Complete:</b> Monitored 6 populations.	<b>Complete:</b> Monitored Las Animas Creek in 2020.
1.2	Genetic Analysis	Collect genetic specimens as necessary to determine purity of populations				
	<b>Progress toward Conservation Strategy Goals</b>	<b>Complete:</b> Determined genetic purity in 30 populations.	<b>Complete:</b> Determined genetic purity in 17 populations.	<b>Complete:</b> Determined genetic purity in 10 populations.	<b>Complete:</b> Determined genetic purity in 3 populations.	<b>Complete:</b> Determined genetic purity of translocated fish during restoration.

Conservation Actions		GMU				
		Rio Grande Hdws.	Lower Rio Grande	Pecos	Canadian	Caballo
<b>Objective 2: Secure and enhance conservation populations.</b>						
2.1	Restricting introduction of nonnative fish species	CPW Regulations: Chapter 0, Article VII, #013 Release of Aquatic Wildlife; Appendix C Cutthroat Trout Waters NMAC 19.35.7: Importation of live non-domestic animals, birds, and fish				
2.2	Restricting spread of disease and invasive species	Colorado Parks and Wildlife Commission Police D-9; CPW Regulations: Chapter 0, Article VII, #014 NMAC 19.30.14: Providing for the control and prevention of the spread of aquatic invasive species in New Mexico				
2.3	Removing nonnative fish species	Conduct nonnative trout removals as necessary				
	<b>Progress toward Conservation Strategy Goals</b>	<i>Complete: Nonnative removals occurred in 4 populations.</i>	<i>Complete: Nonnative removals occurred in 3 populations.</i>		<i>Complete: Nonnative removals occurred in 3 populations.</i>	
2.4	Regulating angling and enforcement	CPW Regulations: Chapter 1, Article II, #108 Special Regulation Waters NMAC 19.31.4.11: Daily bag, possession limits, and requirements or conditions				
2.5	Constructing in-channel barriers	Improve or install barriers to facilitate possible restoration projects				
	<b>Progress toward Conservation Strategy Goals</b>	<i>Complete: Improved one barrier.</i>	<i>Complete: Installed one barrier.</i>	<i>Complete: Installed one barrier.</i>	<i>In Progress: Planning for barrier improvement is underway.</i>	
2.6	Maintaining sources of genetically pure RGCT	Maintain genetic purity of broodstocks	Continue field and hatchery spawn operations	Continue field and hatchery spawn operations	Continue field and hatchery spawn operations	Continue field and hatchery spawn operations
	<b>Progress toward Conservation Strategy Goals</b>	<i>Complete: Haypress Lake reclaimed and RGCT broodstock program reestablished by CPW.</i>	<i>Complete: NMDGF Seven Springs Hatchery continues RGCT broodstock program.</i>	<i>In Progress: NMDGF developing broodstock program.</i>		

Objective 3: Restore RGCT Populations						
3.1	Establishing and/or maintaining RGCT populations (Table 3)	Restore 6-8 conservation populations,	Restore 3-5 conservation populations	Restore 1-3 conservation populations	Restore 1-3 conservation population	Restore 1 conservation population
	<b>Progress toward Conservation Strategy Goals</b>	<p><b>Complete:</b> Haypress Lake, Roaring Fork, Upper Sand Creek Lake, Lower Sand Creek Lake, Upper Sand Creek</p> <p><b>In Progress:</b> Lower Sand Creek, North Fork Trinchera Creek, Rito Hondo</p>	<p><b>Complete:</b> Allen Creek, Beaver Creek, Casias Creek, Chuckwagon Creek, Comanche Creek, Costilla Creek, Costilla Reservoir, Fernandez Creek, La Cueva Creek, Long Canyon</p>	<b>Complete:</b> Willow Creek	<b>Complete:</b> Middle Ponil Creek	<b>Complete:</b> Las Animas Creek
3.2	Maintain genetic purity of the species among the basins	Conduct genetic analysis on selected populations, continued use of triploid rainbow trout throughout New Mexico, broodstock developed to maintain basin-scale lineages				
	<b>Progress toward Conservation Strategy Goals</b>	<b>Complete:</b> Genetic analysis occurred on several populations in all basins. Triploid rainbow trout continue to be stocked in New Mexico. Broodstock development developed and maintained in Colorado and New Mexico.				

Conservation Actions		GMU				
		Rio Grande Hdws.	Lower Rio Grande	Pecos	Canadian	Caballo
<b>Objective 4: Secure and enhance watershed conditions</b>						
4.1	Enhancing and protecting instream and riparian habitat	Habitat enhancement on up to 5 miles of RGCT stream, continue culvert & barrier assessments, repairs, and replacements	Habitat enhancement on 5 miles of RGCT stream; 20 acres of watershed/riparian protection	Habitat enhancement on 5 miles of RGCT stream; 20 acres of watershed/riparian protection		
	<b>Progress toward Conservation Strategy Goals</b>	<b>In Progress:</b> Two miles of riparian fencing completed. Replaced 3 culverts in RGCT streams.	<b>In Progress:</b> 4.5 miles restored in Rio Costilla and 1.5 miles restored in Comanche Creek.	<b>In Progress:</b> Planning for restoration projects underway.	<b>Complete:</b> Elk exclosures constructed along 3 miles of stream.	
4.2	Developing and implementing habitat monitoring protocol	<p style="text-align: center;">Implement habitat monitoring protocol  Fish &amp; habitat monitoring for RGCT streams impacted by wildfire  Fish and habitat monitoring on RGCT streams associated with forest management activities.</p>				
	<b>Progress toward Conservation Strategy Goals</b>	<b>In Progress:</b> Post-wildfire surveys occurred in several waters affected by the Las Conchas, Silver, Little Bear, Luna, and Hermits Peak-Calf Canyon Fires. Post-wildfire surveys completed on Wagon Creek and West Indian Creek.				

Conservation Actions		GMU			
		Rio Grande Hdws.	Lower Rio Grande	Pecos	Canadian
<b>Objective 5: Public Outreach</b>					
5.1	Public Outreach	<p>Trout in the Classroom RGCT rearing and release, “Respect the Rio” program on Santa Fe NF, publicize fishing opportunities for RGCT, present information at NGO and other public meetings</p> <p>Rio Grande cutthroat trout lifecycle curriculum at Water Festivals in Albuquerque, Rio Rancho, Santa Fe (annually ~ 1,000 kids &amp; adults); local community events (annually ~ 300 kids &amp; adults); updated Forest website with curriculum and education materials</p> <p>Rio Grande Hdws.: Oral presentations to San Luis Valley chapter of Trout Unlimited, Beaver Creek, Conejos County and Costilla County Youth Naturally conservation camps. Update RGCT conservation brochure. Publish conservation strategy and agreement on CPW website.</p>			
	<b>Progress toward Conservation Strategy Goals</b>	<b>Completed:</b> All of the above. In addition, RGCT outreach events occurred at youth camps, high schools, Universities, radio shows, tribal youth programs, and professional meetings. RGCT awareness posters and signs were designed, printed, and distributed.			
<b>Objective 6: Data Sharing</b>					
6.1	Annual meeting will be held for database updates	Attend annual database update meeting			
	<b>Progress toward Conservation Strategy Goals</b>	<b>Completed:</b> GMU leaders met annually to enter data and ensure data quality and accuracy.			
6.2	Maintaining and sharing database between signatories.	Maintain, improve, and update range-wide database			
	<b>Progress toward Conservation Strategy Goals</b>	<b>Completed:</b> Database is maintained and shared annually.			

Conservation Actions		GMU			
		Rio Grande Hdws.	Lower Rio Grande	Pecos	Canadian
<b>Objective 7: Coordination</b>					
7.1	Attending annual range-wide coordination meeting	Attend annual range-wide coordination meeting			
	<b>Progress toward Conservation Strategy Goals</b>	<b>Completed:</b> Range-wide meeting occurred annually and is widely attended by signatories, supporting organizations, and other interested stakeholders.			
7.2	Coordinating annual work plan among agencies	Maintain relationships and coordinate annual work plans among agencies through personal communication and meeting attendance			
	<b>Progress toward Conservation Strategy Goals</b>	<b>Completed:</b> Signatories coordinated work through personal communications and meetings.			
7.3	Reporting results of monitoring	Compile Accomplishments Reports, enter monitoring data into range-wide database			
	<b>Progress toward Conservation Strategy Goals</b>	<b>Completed:</b> Accomplishment Reports were written and data entered into range-wide database annually.			
7.4	Assessing success of Conservation Strategy and making changes as needed	Complete 5-year Status Assessment Report; Renew Conservation Agreement			
	<b>Progress toward Conservation Strategy Goals</b>	<b>Completed:</b> Status Assessment Report completed in 2019, Conservation Agreement renewal in 2023.			

## APPENDIX D. Status of Current Conservation Populations of Rio Grande cutthroat trout.

Information on conservation populations in this table is based on the 2022 database, which is populated with data from 2021. The Conservation Team is aware that since 2021, some populations may have been extirpated due to the effects of wildfire, while other populations have been restored. In order to input data accurately and allow for review, there is a significant time lag before an updated database is available. The 2022 database represents the best information available to the team.

Population ID	Stream Names	GMU	Factors	
			Occupied Stream Length (km)	Nonnative Salmonids Present?
11080001cp001	Ricardo, Elk, Gold, Leandro, Vermejo	Canadian	69.3	Yes
11080001cp002	Little Vermejo	Canadian	11.9	Yes
11080001cp003	Leandro	Canadian	3.1	Yes
11080002cp001	McCrystal, North Ponil	Canadian	15.2	No
11080002cp002	South Ponil	Canadian	15.1	No
11080002cp003	Middle Ponil	Canadian	9.6	No
11080002cp005	Clear*	Canadian	7.5	No
11080004cp001	Luna East Fork	Canadian	6.8	Yes
11080004cp002	Luna West Fork	Canadian	4.6	Yes
11080004cp003	Rito Morphy	Canadian	6.7	No
11080004cp004	Santiago	Canadian	6.5	No
13010001cp002	Roaring Fork	Headwaters	11.2	No
13010002cp001	San Francisco	Headwaters	25.4	Yes
13010002cp003	Rhodes Gulch	Headwaters	3.5	No
13010002cp004	Torsido	Headwaters	10.4	Yes
13010002cp005	Jim	Headwaters	6.7	Yes
13010002cp006	Cuates	Headwaters	6.0	No
13010002cp007	Jaroso	Headwaters	9.3	Yes
13010002cp008	Jaroso	Headwaters	6.2	Yes
13010002cp009	Torcido	Headwaters	13.2	No
13010002cp010	Alamosito	Headwaters	4.8	Yes
13010002cp011	Vallejos	Headwaters	224	Yes
13010002cp012	Trinchera, Deep Canyon	Headwaters	29.2	Yes
13010002cp014	Trinchera North Fork	Headwaters	11.5	Yes
13010002cp015	West Indian, South Fork West Indian	Headwaters	17.0	Yes
13010002cp016	Lower (Placer, Sangre De Cristo, Wagon)	Headwaters	38.0	Yes
13010002cp017	Little Ute	Headwaters	2.7	No
13010002cp018	Cuates	Headwaters	5.5	No
13010002cp019	Torcido	Headwaters	3.3	No
13010002cp020	Alamosito	Headwaters	0.7	Yes
13010002cp021	Placer, Middle Placer, South Placer, Grayback	Headwaters	31.8	No
13010002cp022	Bernardino Creek	Headwaters	5.5	Yes
13010002cp023	El Perdido Creek	Headwaters	3.7	No
13010002cp024	Middle Fork Placer Creek	Headwaters	14.4	No
13010002cp025	Squirrel Canyon	Headwaters	3.8	Yes
13010003cp001	Medano	Headwaters	28.8	No



Population ID	Stream Names	GMU	Factors	
			Occupied Stream Length (km)	Nonnative Salmonids Present?
13010004cp001	Whale	Headwaters	4.3	No
13010004cp002	East Pass Creek	Headwaters	11.2	No
13010004cp003	Cross, Jacks	Headwaters	12.9	No
13010004cp003	Lower (Cross, Jacks)	Headwaters	18.5	Yes
13010004cp004	East Middle	Headwaters	4.9	No
13010004cp006	Big Springs	Headwaters	4.1	No
13010004cp007	Carnero Middle Fork	Headwaters	11.4	Yes
13010004cp010	Carnero South Fork	Headwaters	22.6	Yes
13010004cp011	Miners, Prong	Headwaters	12.9	Yes
13010004cp012	Cave	Headwaters	10.1	Yes
13010005cp001	Tio Grande	Headwaters	7.6	Yes
13010005cp002	Tio Grande	Headwaters	4.5	Yes
13010005cp003	Tanques	Headwaters	2.9	Yes
13010005cp004	Rio Nutritas	Headwaters	5.1	Yes
13010005cp006	Osier	Headwaters	5.9	No
13010005cp007	Lake Fork Conejos	Headwaters	1.0	No
13010005cp008	Lake Fork Conejos	Headwaters	4.0	No
13010005cp009	Rio De Los Pinos	Headwaters	0.9	No
13010005cp010	Cascade	Headwaters	4.7	No
13020101cp001	Allen, Casias, Cherokee, Costilla, East Costilla, West Costilla, Frey, Glacier, Patten, Santistevan, State Line	LowerRG	74.4	No
13020101cp003	Powderhouse	LowerRG	6.2	No
13020101cp004	Powderhouse	LowerRG	2.1	Yes
13020101cp005	La Cueva	LowerRG	5.1	No
13020101cp006	Comanche, Gold, Grassy, Holman, LaBelle	LowerRG	44.7	No
13020101cp007	Fernandez	LowerRG	4.4	No
13020101cp008	Ute	LowerRG	13.8	No
13020101cp009	Cabresto	LowerRG	13.7	Yes
13020101cp010	Bitter	LowerRG	2.8	No
13020101cp011	Columbine, Deer, Placer Fork, Willow	LowerRG	10.7	No
13020101cp011	Lower (Columbine, Deer, Placer Fork, Willow)	LowerRG	7.1	Yes
13020101cp012	San Cristobal	LowerRG	6.4	No
13020101cp013	Yerba	LowerRG	4.8	Yes
13020101cp015	Italianos	LowerRG	3.9	No
13020101cp016	Gavilan	LowerRG	3.4	Yes
13020101cp017	Rio Hondo South Fork	LowerRG	6.3	Yes
13020101cp018	Tienditas	LowerRG	3.2	Yes
13020101cp019	Frijoles	LowerRG	5.0	Yes

Population ID	Stream Names	GMU	Factors	
			Occupied Stream Length (km)	Nonnative Salmonids Present?
13020101cp020	Palociento	LowerRG	4.0	Yes
13020101cp021	Rio Grande Del Rancho	LowerRG	4.3	Yes
13020101cp022	Rito La Presa	LowerRG	14.8	No
13020101cp022	Lower (Rito La Presa)	LowerRG	5.8	Yes
13020101cp023	Policarpio	LowerRG	4.8	No
13020101cp024	Osha	LowerRG	8.8	No
13020101cp025	Rito Angostura	LowerRG	6.4	No
13020101cp026	Alamitos*	LowerRG	9.6	No
13020101cp027	Rio Santa Barbara Middle Fork	LowerRG	7.0	Yes
13020101cp028	Rio Santa Barbara East Fork	LowerRG	4.1	Yes
13020101cp029	Rio Santa Barbara	LowerRG	14.5	Yes
13020101cp030	Rio De Las Trampas	LowerRG	8.2	No
13020101cp031	Rio San Leonardo	LowerRG	5.8	No
13020101cp032	Rio De La Cebolla, Rio De La Truchas	LowerRG	17.1	No
13020101cp034	Rio Quemado	LowerRG	16.8	No
13020101cp035	Jicarita	LowerRG	4.1	No
13020101cp036	Indian	LowerRG	2.8	Yes
13020101cp037	Rio Medio	LowerRG	13.1	Yes
13020101cp038	Rio Frijoles, Rio Jaroso	LowerRG	12.5	Yes
13020101cp040	Rio Molino	LowerRG	5.6	No
13020101cp042	Chuckwagon Creek	LowerRG	4.2	No
13020101cp047	Rio Chiquito	LowerRG	2.3	Yes
13020102cp001	Nabor*	LowerRG	5.9	No
13020102cp002	Little Willow	LowerRG	3.7	Yes
13020102cp003	Poso	LowerRG	3.9	Yes
13020102cp004	Jaroso	LowerRG	7.9	No
13020102cp005	Canjilon	LowerRG	8.1	No
13020102cp006	El Rito	LowerRG	12.8	No
13020102cp007	El Rito	LowerRG	5.3	Yes
13020102cp008	Canones	LowerRG	10.7	No
13020102cp010	Rio Del Oso, Rito De Abiquiu, Rito Del Oso	LowerRG	12.5	No
13020102cp011	Wolf	LowerRG	0.6	Yes
13020102cp012	Wolf East Fork	LowerRG	3.7	No
13020102cp016	Chihuahuenos Creek	LowerRG	10.8	No
13020201cp001	Capulin	LowerRG	12.0	No
13020201cp002	Medio Dia Creek	LowerRG	0.7	No
13020201cp003	Rito de los Frijoles	LowerRG	18.0	No
13020202cp001	Rio Cebolla	LowerRG	6.7	Yes
13020202cp002	Rito De Las Palomas	LowerRG	6.9	Yes
13020202cp003	Las Vacas, Anastacio, De Las Perchas	LowerRG	4.5	No
13020202cp003	Lower (Las Vacas, Anastacio, De Las Perchas)	LowerRG	15.4	Yes

Population ID	Stream Names	GMU	Factors	
			Occupied Stream Length (km)	Nonnative Salmonids Present?
13020204cp001	La Jara	LowerRG	4.4	No
13020204cp002	Rito De Los Pinos	LowerRG	2.3	Yes
13020204cp003	Rio Puerco	LowerRG	14.4	No
13030101cp001	Holden Prong	Caballo	2.8	No
13060001cp001	Rio Mora	Pecos	2.4	Yes
13060001cp002	Rio Mora Tributary	Pecos	3.2	Yes
13060001cp003	Rio Valdez	Pecos	3.7	No
13060001cp004	Pecos River	Pecos	6.3	No
13060001cp005	Rito Del Padre, Rito Maestas	Pecos	9.9	Yes
13060001cp006	Rito Los Esteros	Pecos	2.5	Yes
13060001cp007	Jacks	Pecos	11.4	No
13060001cp008	Cave	Pecos	2.7	Yes
13060001cp009	Macho	Pecos	4.5	No
13060001cp010	Dalton	Pecos	6.7	No
13060001cp011	Bear	Pecos	5.6	No

**APPENDIX E. Draft Habitat Monitoring Protocol**

**Stream Name:** \_\_\_\_\_ **Code:** \_\_\_\_\_ **Station #** \_\_\_\_\_

**Location:** \_\_\_\_\_ **Date:** \_\_\_\_\_

**Reach Location:**    **UTM Start:** Easting \_\_\_\_\_ Northing \_\_\_\_\_

**UTM Finish:** Easting \_\_\_\_\_ Northing \_\_\_\_\_

**Personnel:** \_\_\_\_\_

**Station Length:** \_\_\_\_\_ **Average Width:** \_\_\_\_\_ **Water Temp:** \_\_\_\_\_

**Bank Stability:**    **Right Bank**    High (100-90%)    Moderate (75-90%)    Low (0-75%)

**Left Bank**    High (100-90%)    Moderate (75-90%)    Low (0-75%)

**Streambank vegetative cover (circle):**    > 25%    <25%

**Substrate:** Sand/Silt% \_\_\_\_\_ Gravel% \_\_\_\_\_ Cobble% \_\_\_\_\_ Boulder% \_\_\_\_\_

**Pool:** \_\_\_\_\_ %    **Riffle:** \_\_\_\_\_ %    **Stream Shade:** \_\_\_\_\_ %

**General Riparian Condition Comments:**

---

---

**General Comments:**

---

## **APPENDIX F. Fire and Drought Contingency Plans**

Despite habitat enhancement and population restoration, fire and drought will still occur in the region. In the event of fire or drought, the consideration points presented below are a guide for resource managers; other strategies and options may be available. Points to consider prior to intervention include:

- 1) Is there an eminent threat to the population?
- 2) Is the population genetically unique (relic) or is it a replicated population?
  - If a relic population, have replicated populations been established and are they safe from the current threat?
- 3) Would the action cause more harm than good? (e.g. stress associated with electrofishing, handling and transport vs. likelihood of population extirpation)
- 4) What is the likely timeframe needed to hold Rio Grande cutthroat trout prior to returning to the threatened water body?
- 5) Is it feasible to hold rescued Rio Grande cutthroat trout for the time projected for recovery?
- 6) Can required policies and regulations be adhered to in a timeframe that will allow for salvage to occur? e.g. fish health inspection.
- 7) How accessible are the salvage and secondary water locations?
- 8) Is the threatened area safe for personnel and will the Fire Incident Commander or Forest Service allow access to the area?

### **Fire**

The available options during and after a wildfire are often limited at best. Not one approach is considered better than the other, but rather what will work best for the threatened population. Previous strategies used by the states of Colorado and New Mexico are:

- 1) No action
- 2) Salvage and isolate at a state fish hatchery (temporary).
- 3) Salvage and transplant to a fishless creek
- 4) Salvage and house in an isolation unit (Colorado)

Options 2 thru 4 will often require additional actions to comply with state fish health regulations, and ensure genetic purity, such as a complete health inspection and PIT tagging.

### **Drought**

The threats posed by drought can be less time sensitive, but the challenges for successful salvage are equally difficult. In a majority of cases, drought is not localized but rather widespread so the possibility of finding a water body not under the same stressors will be limited, if at all possible. Previous strategies used by the states of Colorado and New Mexico are:

- 1) No action
- 2) Salvage and isolate at a state fish hatchery (temporary)

- 3) Salvage and transplant to a fishless creek
- 4) Salvage and house in an isolation unit (Colorado)
- 5) Salvage and re-locate Rio Grande cutthroat trout to a more stable part of the watershed

Options 2 thru 4 will often require additional actions to comply with state fish health regulations, and ensure genetic purity, such as a complete health inspection and PIT tagging.