



2023 - 2024 Pronghorn Season

Landowner List for Pronghorn Ranch-Wide Properties



Attention hunters:

Properties with Ranch-wide agreements will be open to public hunters who have drawn a public pronghorn license for that GMU. If a property with a Ranch-wide agreement contains multiple GMUs, public draw hunters may ONLY hunt the portion of the ranch in the GMU for which they have a valid license. All pronghorn hunts on a Ranch-wide property will correspond with the public draw hunts listed in the Rules and Information Booklet. Over-the-counter private land pronghorn licenses are not valid on a Ranch-wide ranch.

The following ranches receive private-land authorizations for pronghorn antelope hunting which may be bartered, sold or traded to the public. For each Game Management Unit (GMU), the list indicates ranches that are participating in the Ranch-Wide program for the 2023-24 License Year and have signed a Hunting Agreement with the Department and have been issued hunting opportunities. For each ranch the list indicates: the ranch number, the authorized ranch contact person and contact information, enrolled acreage, and the number of hunting opportunities (MB / F-IM / ES) issued to the ranch.

This list is provided as a courtesy of the New Mexico Department of Game and Fish. Arrangements for obtaining an authorization is specifically between the hunter and the landowner or authorized ranch contact person. Once an authorization is obtained by the hunter, he/she may purchase their private-land proghorn antelope license online, by telephone or at NMDGF offices (NMDGF vendors statewide cannot issue private-land licenses). Instructions on how to purchase licenses online can be found on the department website at <http://www.wildlife.state.nm.us> via Hunting - Hunting Lands and Maps - Pronghorn Private Lands.

Acreages listed in this report reflect the enrolled acreage of each ranch. Hunting opportunities issued to each ranch are based on the qualifying pronghorn antelope habitat acreage of each property.

Hunting Status: **RO** = Ranch Only

Both private and assigned public hunters shall have free, unrestricted and equal access (to include vehicle access) to the entire ranch (private deeded and leased public lands, where applicable).

For details and information on public and private-land pronghorn antelope hunting please refer to the2023-2024 New Mexico Hunting Rules and Information Booklet. This booklet is available at all NMDGF offices, on our Department website at **www.wildlife.state.nm.us**, and at NMDGF vendors statewide.

GMU-Ranch #	Ranch Name	Ranch Contact	Address	Ranch Phone	Hunting Status	Enrolled Private Acreage	Enrolled Public Acreage	Enrolled Total Acreage	Private Authorizations			Public Assigned Hunters		
									MB	F-IM	ES	MB	F-IM	ES
12-43212	Farrington Land and Cattle LLC	FESTUS FARRINGTON	607 HEAP RANCH RD. QUEMADO, NM 87829	(575) 517-0691	RO	1,780	19,180	20,960	3	0	0	0	0	0

GMU 12 Totals:

1,780

19,180

20,960

3

0

0

0

0

0

GMU-Ranch #	Ranch Name	Ranch Contact	Address	Ranch Phone	Hunting Status	Enrolled Private Acreage	Enrolled Public Acreage	Enrolled Total Acreage	Private Authorizations			Public Assigned Hunters		
									MB	F-IM	ES	MB	F-IM	ES
15-18644	COW SPRINGS RANCH	JAY D HOUSTON	HC 32 BOX 401 QUEMADO, NM 87829	(575) 773-4108	RO	2,335	18,839	21,174	2	0	0	0	0	0
15-18639	Red Cone / H-V RANCH	NELSON SHIRLEY	PO Box 277 SPRINGERVILLE, AZ 85938	(575) 547-2818	RO	12,000	123,600	135,600	14	0	0	0	0	0

GMU 15 Totals:

14,335

132,439

1 ,774

1

0

0

0

0

0

GMU-Ranch #	Ranch Name	Ranch Contact	Address	Ranch Phone	Hunting Status	Enrolled Private Acreage	Enrolled Public Acreage	Enrolled Total Acreage	Private Authorizations			Public Assigned Hunters		
									MB	F-IM	ES	MB	F-IM	ES
16-18697	BRUTON RANCH	GERALD B BLAKE	3373 MARTIN RD. PALMYRA, NY 14522	(315) 374-8209	RO	12,432	50,872	59,202	13	0	0	0	0	0
16-27771	F-D Cattle CO LLC RANCH	FRANK DALMOLIN	#2 Dalmolin Heights GLOBE, AZ 85501	(928) 812-1083	RO	9,000	60,000	69,000	11	0	0	0	0	0

GMU 16 Totals: 21,432 110,872 128,202 24 0 0 0 0 0

GMU-Ranch #	Ranch Name	Ranch Contact	Address	Ranch Phone	Hunting Status	Enrolled Private Acreage	Enrolled Public Acreage	Enrolled Total Acreage	Private Authorizations			Public Assigned Hunters		
									MB	F-IM	ES	MB	F-IM	ES
33-26855	MATHIS LAND & CATTLE INC.	GERALD MATHIS	PO BOX 2045 KENNA, NM 88122	(575) 398-6259	RO	14,407	14,285	28,692	4	0	0	0	0	0
33-43548	Gents Cattle LLC	Alfonso Caballero	1608 S. Wyoming Roswell, NM 88203	(575) 420-8441	RO	2,199	24,187	26,386	4	0	0	0	0	0

GMU 33 Totals: 14,407 14,285 55,078 8 0 0 0 0 0

GMU-Ranch #	Ranch Name	Ranch Contact	Address	Ranch Phone	Hunting Status	Enrolled Private Acreage	Enrolled Public Acreage	Enrolled Total Acreage	Private Authorizations			Public Assigned Hunters		
									MB	F-IM	ES	MB	F-IM	ES
38-19236	Circle F	Alfonso Caballero	1608 S. Wyoming Roswell, NM 88203	(575) 420-8441	RO	1,878	51,342	53,220	2	0	0	0	0	0

GMU 38 Totals: 1,878 51,342 53,220 2 0 0 0 0 0

GMU-Ranch #	Ranch Name	Ranch Contact	Address	Ranch Phone	Hunting Status	Enrolled Private Acreage	Enrolled Public Acreage	Enrolled Total Acreage	Private Authorizations			Public Assigned Hunters		
									MB	F-IM	ES	MB	F-IM	ES
50-22311	MESTAS	JOHN MESTAS	19564 CRS SANFORD, CO 81151	(719) 580-0103	RO	3,520	19,827	23,347	8	0	0	0	0	0
50-19695	SCHOFIELD	RANDY SCHOFIELD	PO BOX 515 ROMEO, CO 81148	(719) 298-1785	RO	4,069	12,043	16,112	6	0	0	0	0	0

GMU 50 Totals: 7,589 31,870 39,459 14 0 0 0 0 0

Farrington Ranch

2020 Ranch-wide Property

Legend

BLM

BOR

DOD

FS

FWS

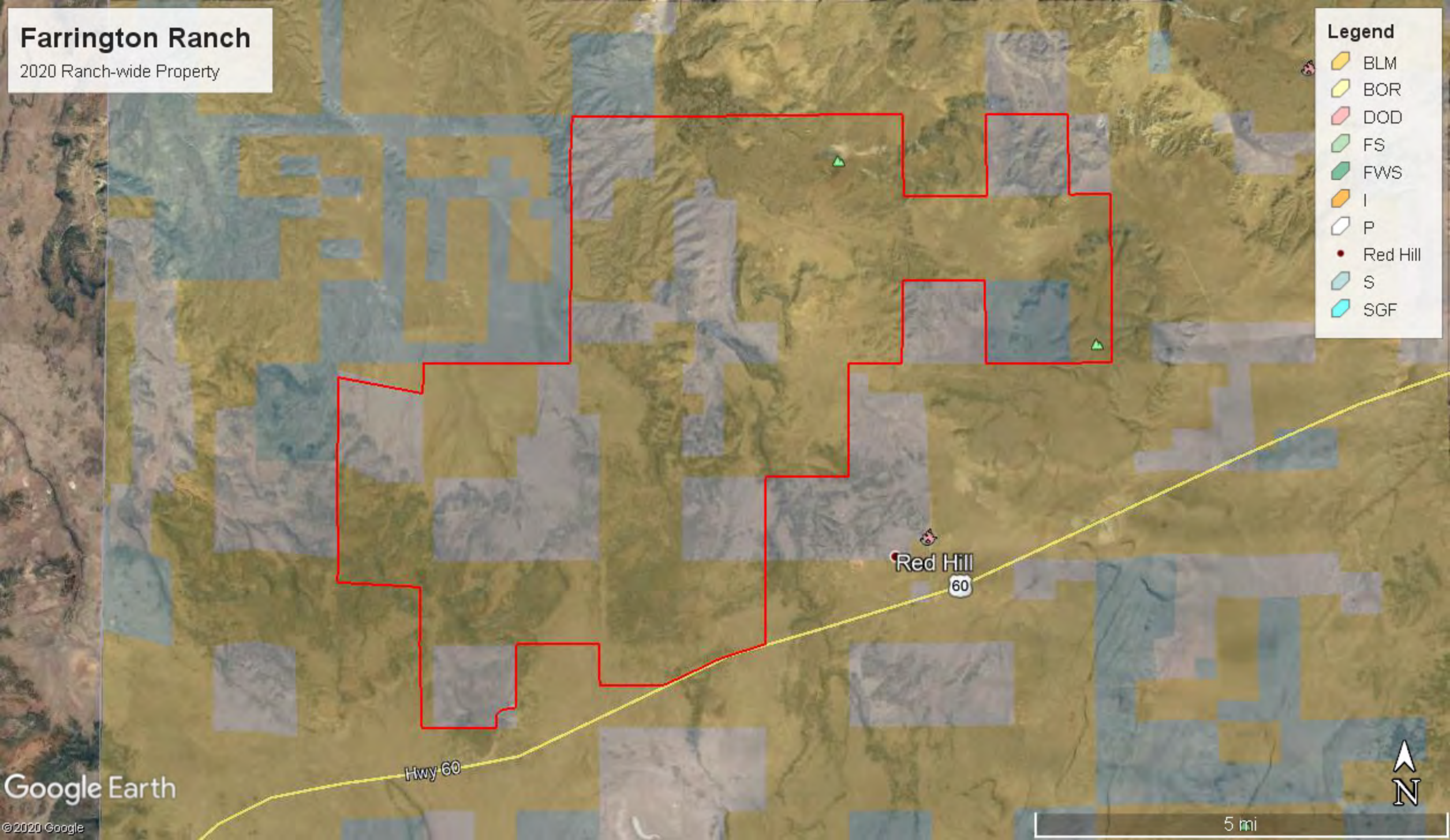
I

P

Red Hill

S

SGF





COW SPRINGS RANCH

15-18644

Ranch Hunt Option: RANCH ONLY

Ranch Contact: JAY D HOUSTON

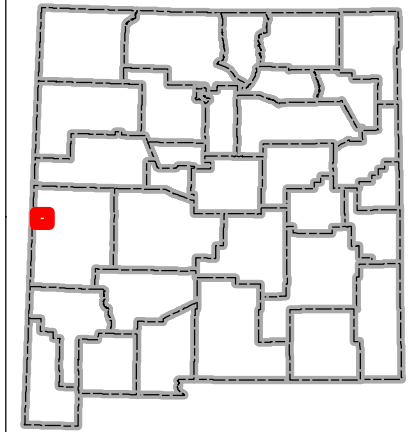
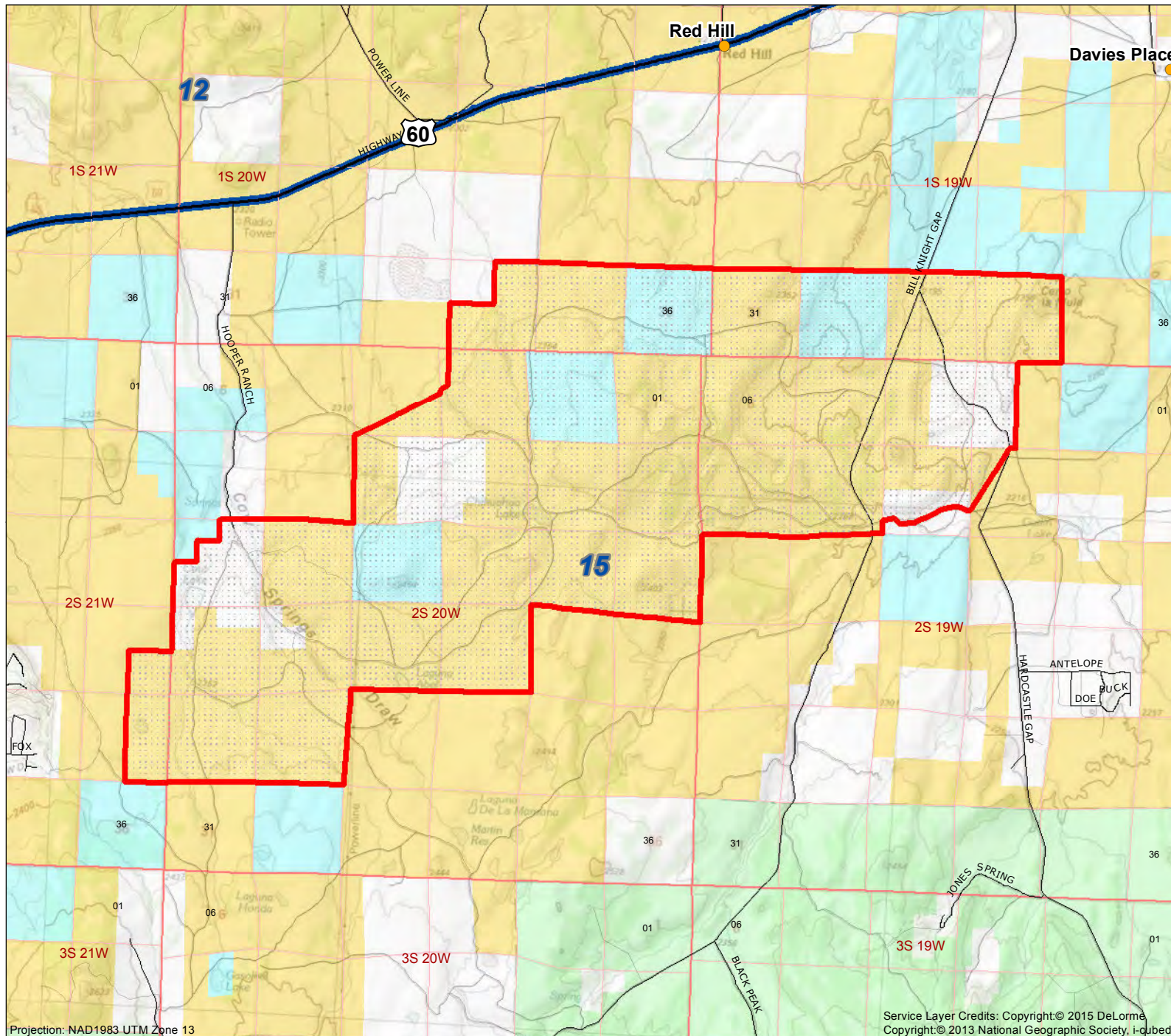
HC 32 BOX 401

QUEMADO

(575) 773-4108

NM 87829

2018-19
Antelope Private Lands Use System
(A-PLUS)



Ranch Acreage

Private: 2,335

Public: 18,839

Total: 21,174

Antelope Ranch Boundary

GMU Boundaries

Places

Roads

Secondary Road

State Highway

Interstate Highway

US Highway

Surface Ownership

Bureau of Land Management

Forest Service

Tribal

Private

State



1 inch equals 1.62 miles

DISCLAIMER: This map provides the general location of the A-PLUS ranch. Ranch boundaries may not be exact. For specific ranch information ask the Ranch Contact. Refer to USGS or BLM quadrangle maps for more detailed mapping.

New2007

Projection: NAD1983 UTM Zone 13

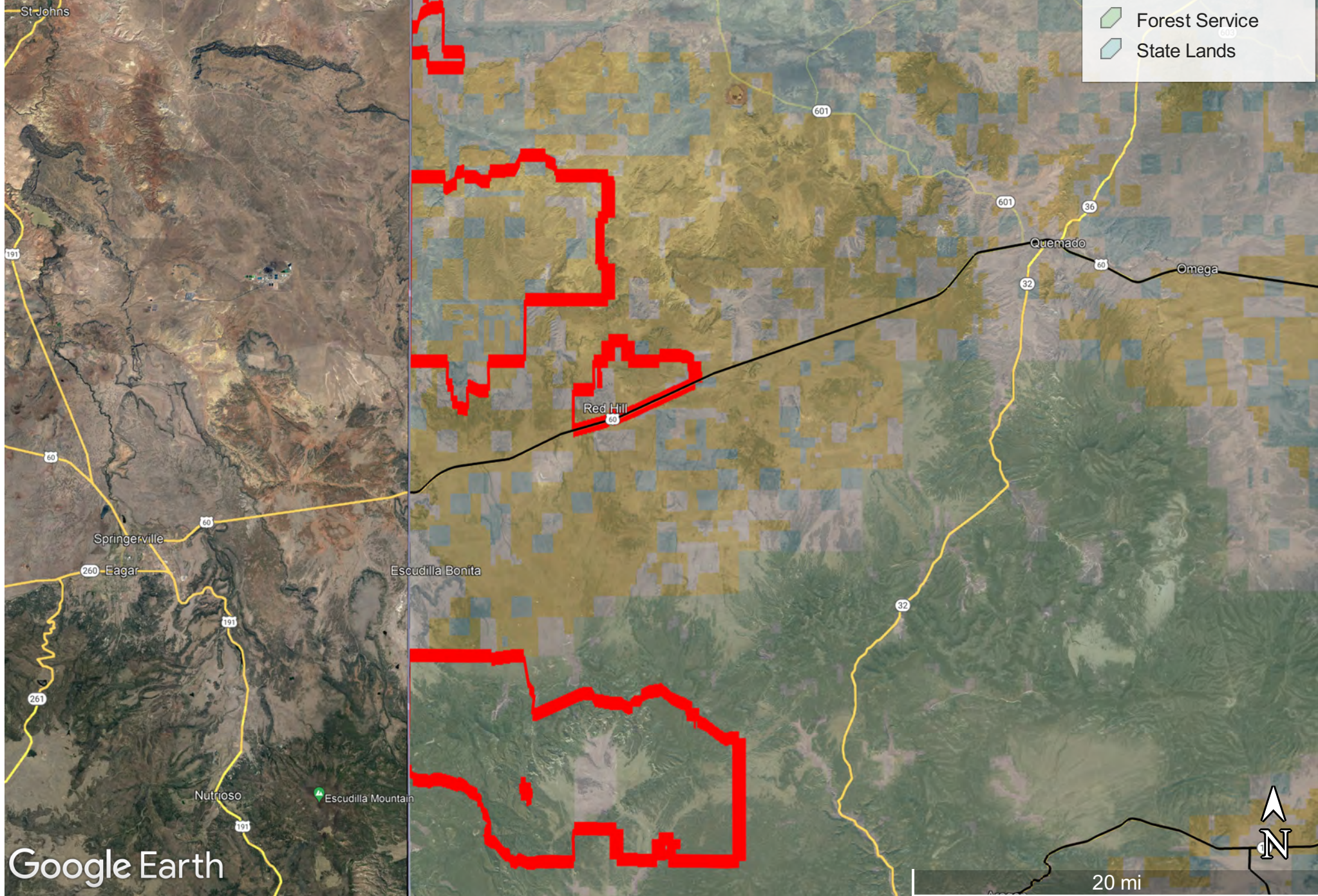
Service Layer Credits: Copyright© 2015 DeLorme
Copyright© 2013 National Geographic Society, i-cubed

Ranchwide Map 2023

Boundaries for property 15-18639

Legend

- BLM
- Escudilla Mountain
- Forest Service
- State Lands



Bruton Ranch

Ranch-Wide Property

Legend

- BLM
- BOR
- Datil
- DOD
- FS
- FWS
- I
- Karl G. Jansky Very Large Array
- National Radio Astronomy Observatory
- NATIONAL WILDLIFE REFUGE
- P
- S
- SGF

Datil

60



Google Earth

© 2021 Google

52

9 mi

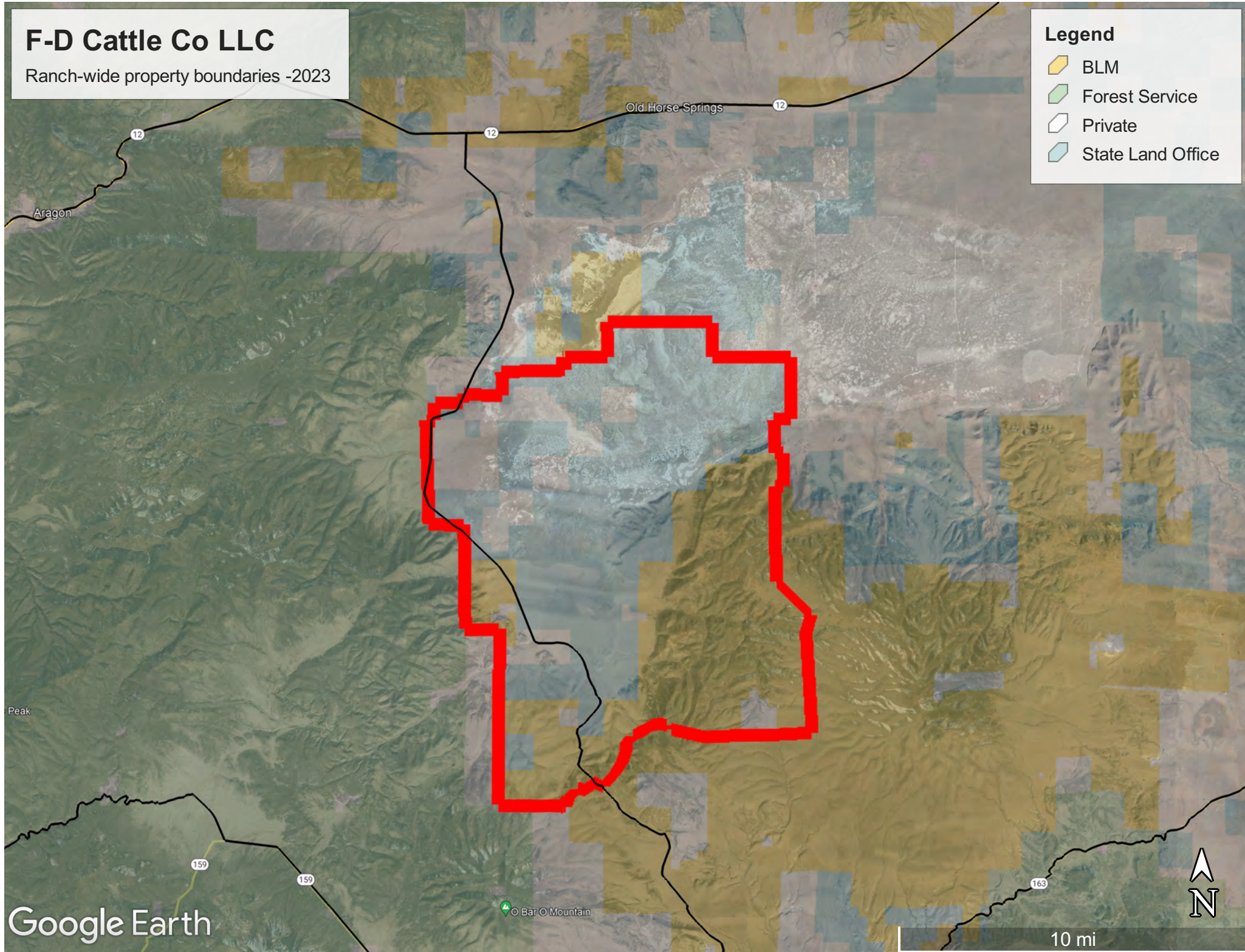


F-D Cattle Co LLC

Ranch-wide property boundaries -2023

Legend

- BLM
- Forest Service
- Private
- State Land Office





MATHIS LAND & CATTLE INC.

33-26855

Ranch Hunt Option: RANCH ONLY

Ranch Contact: GERALD MATHIS

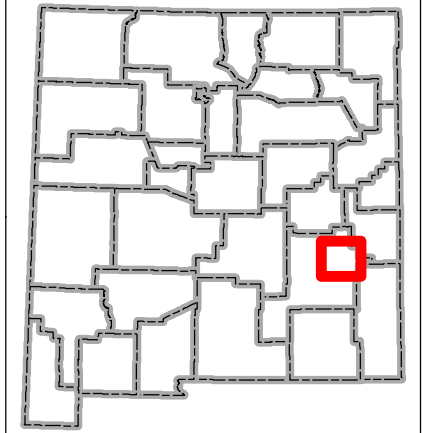
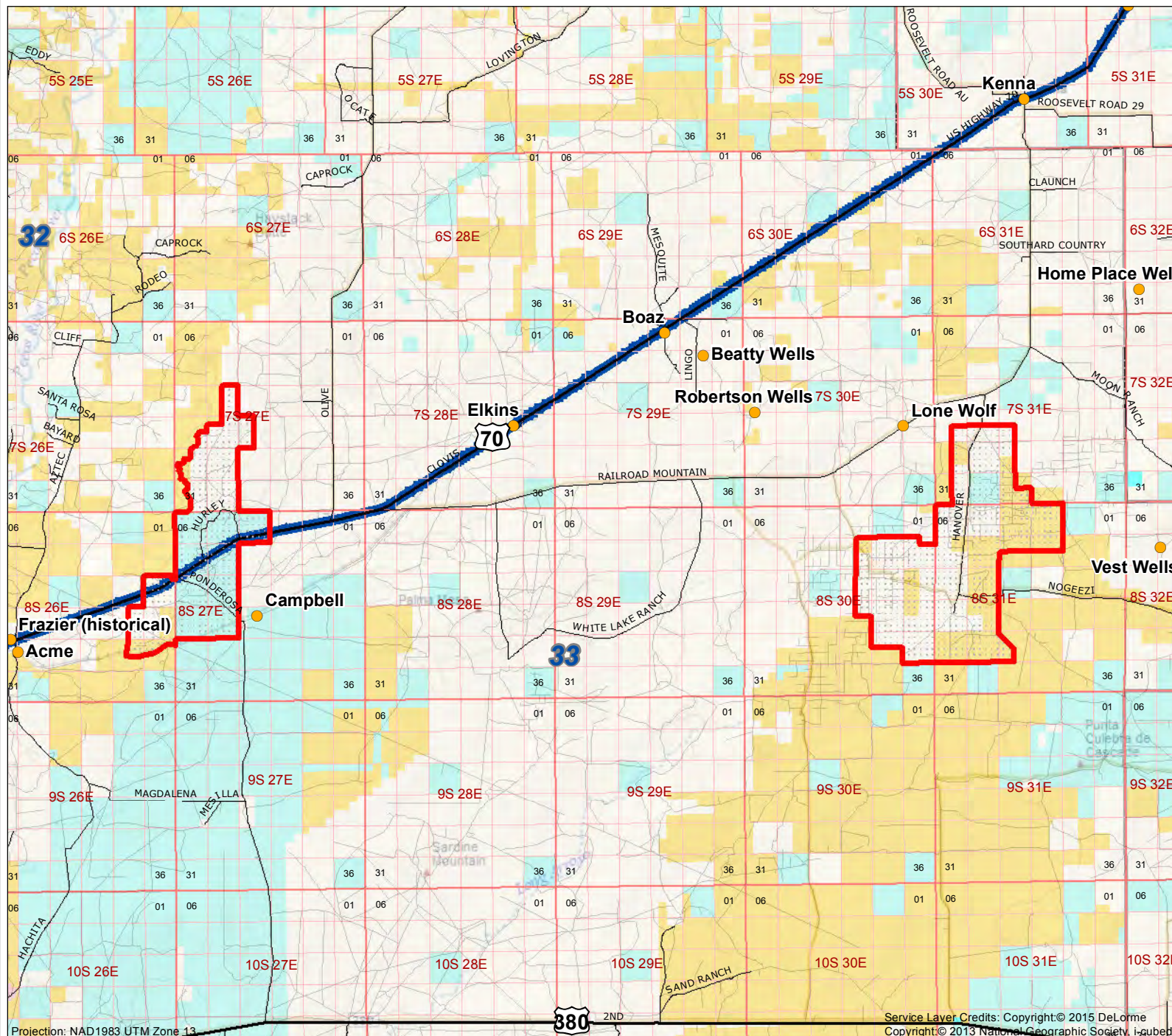
PO BOX 2045

KENNA

(575) 398-6259

NM 88122

2018-19
Antelope Private Lands Use System
(A-PLUS)



Ranch Acreage

Private: 14,407

Public: 14,285

Total: 28,692

Antelope Ranch Boundary

GMU Boundaries

Places

Roads

Secondary Road

State Highway

Interstate Highway

US Highway

Surface Ownership

Bureau of Land Management

Forest Service

Tribal

Private

State



1 inch equals 4.48 miles

DISCLAIMER: This map provides the general location of the A-PLUS ranch. Ranch boundaries may not be exact. For specific ranch information ask the Ranch Contact. Refer to USGS or BLM quadrangle maps for more detailed mapping.

Service Layer Credits: Copyright © 2015 DeLorme
Copyright © 2013 National Geographic Society







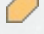




Projection: NAD1983 UTM Zone 13

HQ2012

Gents Cattle

Ranch-Wide Property

Legend

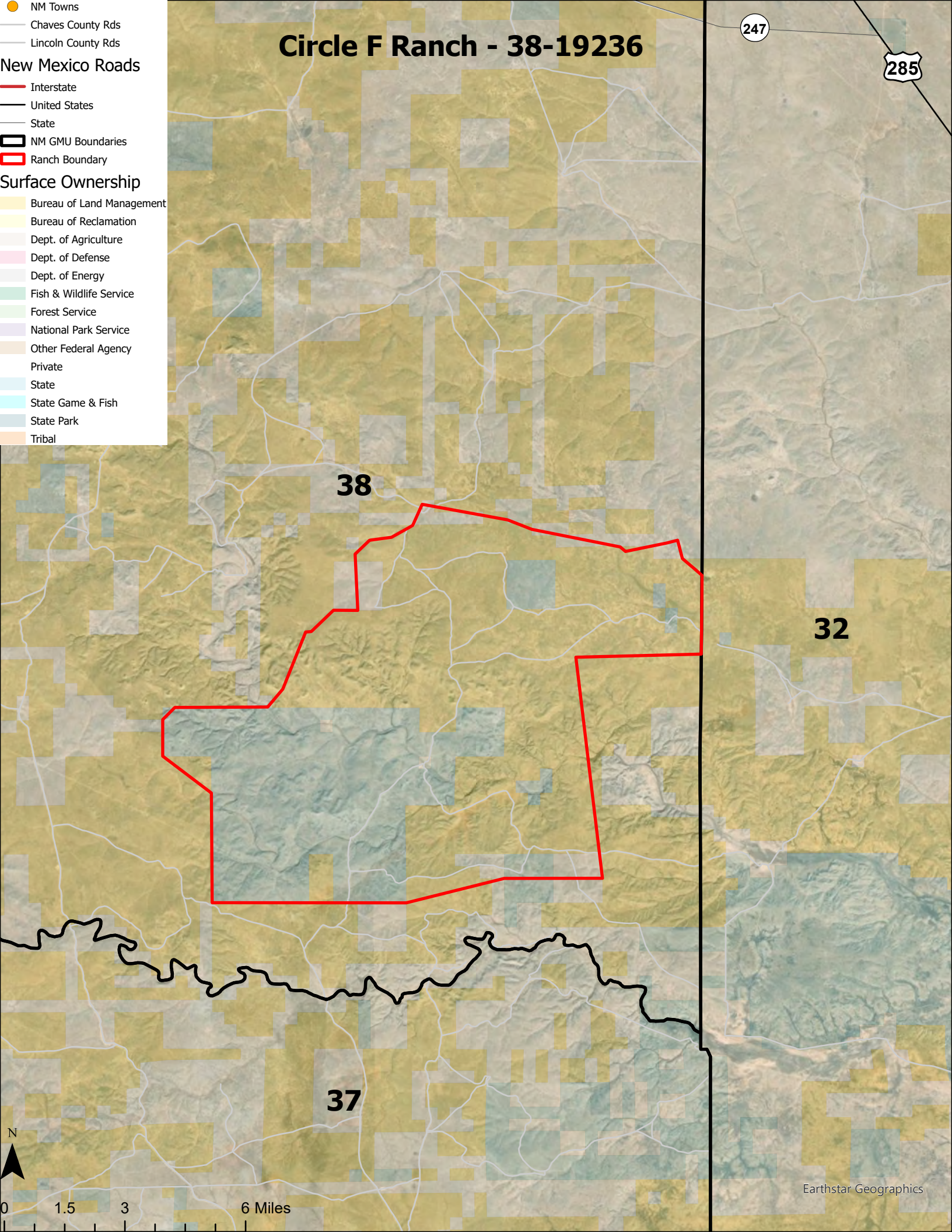
-  Bitter Lake National Wildlife Refuge
-  BITTER LAKE NATIONAL WILDLIFE REFUGE
-  BLM
-  DOD
-  FS
-  FWS
-  I
-  KBCQ-FM Roswell
-  P
-  S
-  SP



6 mi

Google Earth

© 2021 Google





MESTAS

50-22311

Ranch Hunt Option: UNIT WIDE

Ranch Contact: JOHN MESTAS

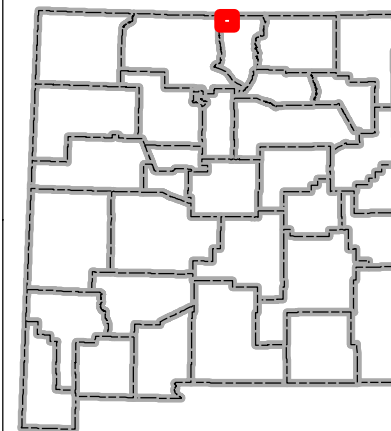
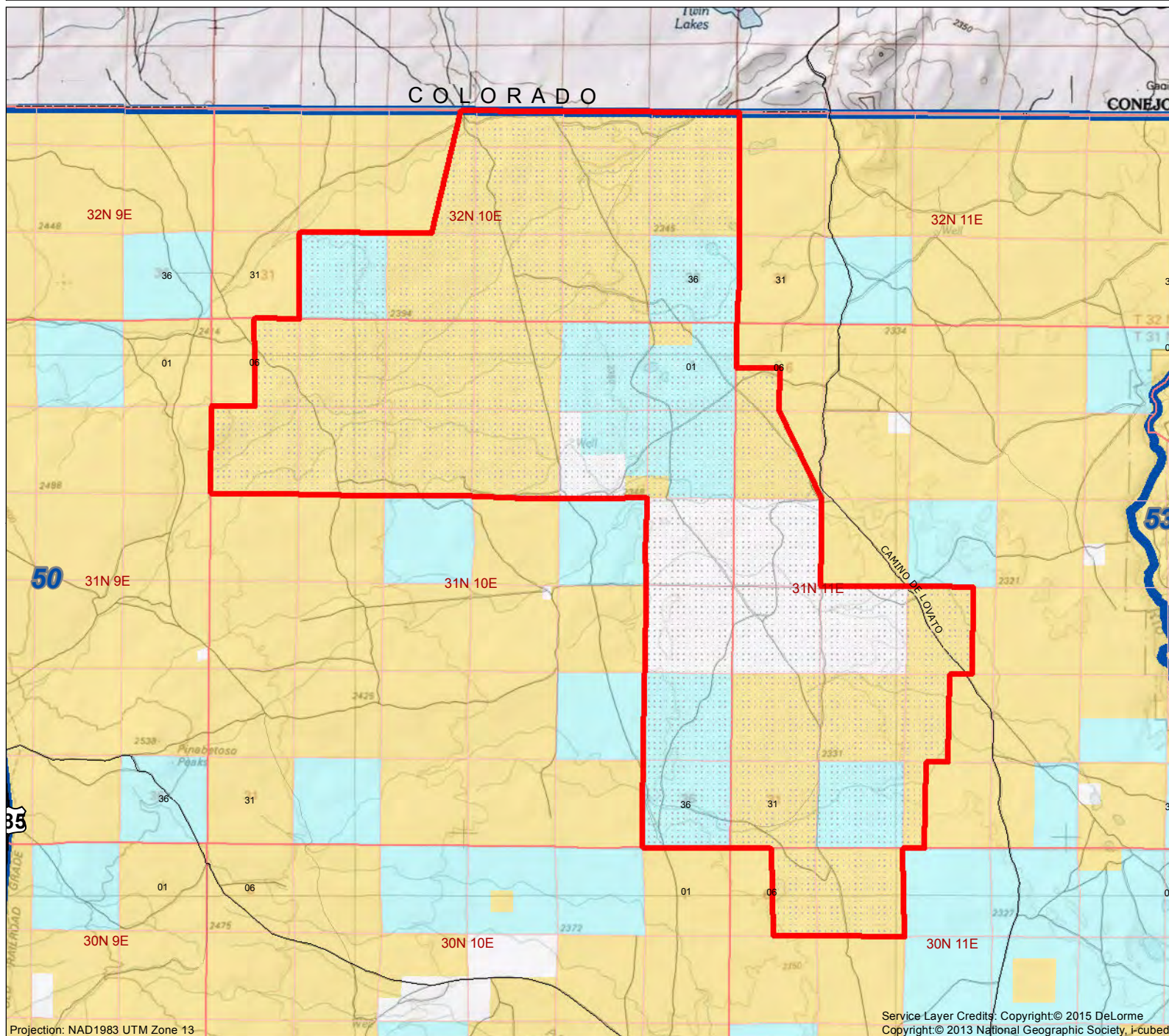
19564 CRS

SANFORD

(719) 580-0103

CO 81151

2018-19
Antelope Private Lands Use System
(A-PLUS)



Ranch Acreage

Private: 3,520

Public: 19,827

Total: 23,347

Antelope Ranch Boundary

GMU Boundaries

Places

Roads

Secondary Road

State Highway

Interstate Highway

US Highway

Surface Ownership

Bureau of Land Management

Forest Service

Tribal

Private

State



1 inch equals 1.63 miles

DISCLAIMER: This map provides the general location of the A-PLUS ranch. Ranch boundaries may not be exact. For specific ranch information ask the Ranch Contact. Refer to USGS or BLM quadrangle maps for more detailed mapping.

Service Layer Credits: Copyright© 2015 DeLorme
Copyright© 2013 National Geographic Society, i-cubed

Projection: NAD1983 UTM Zone 13

NEA2010



SCHOFIELD

50-19695

Ranch Hunt Option: UNIT WIDE

Ranch Contact: RANDY SCHOFIELD

PO BOX 515

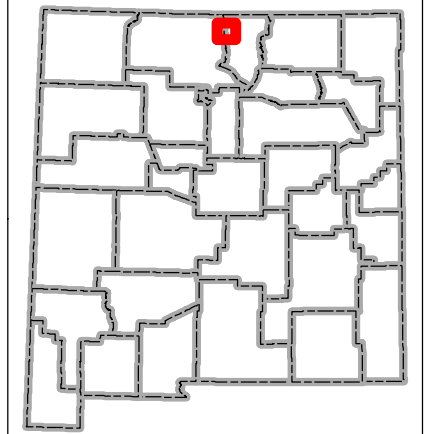
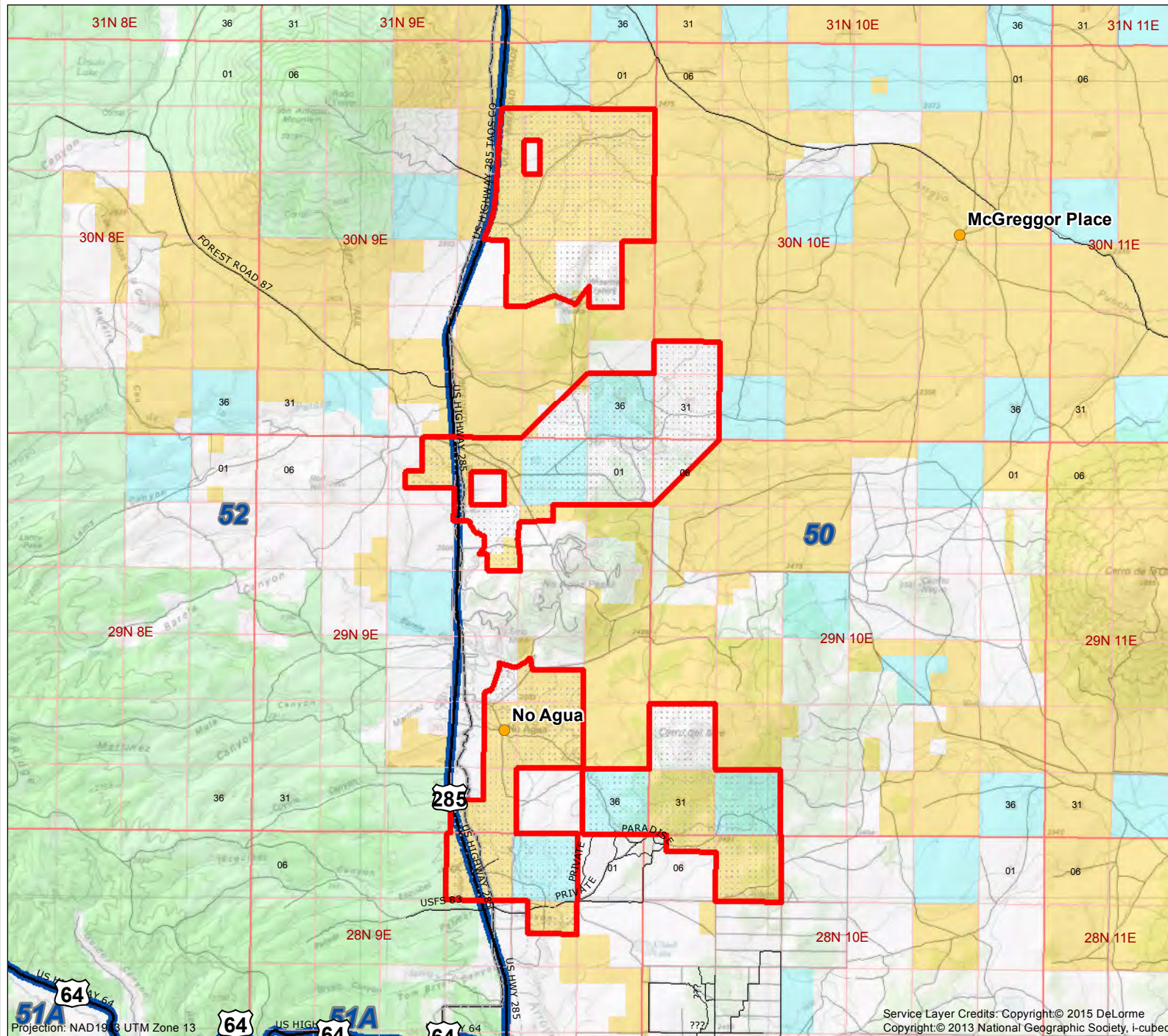
ROMEO

CO 81148

(719) 298-1785

2018-19

**Antelope Private Lands Use System
(A-PLUS)**



Ranch Acreage

Private: 4,069

Public: 12,043

Total: 16,112

Antelope Ranch Boundary

GMU Boundaries

Places

Roads

Secondary Road

State Highway

Interstate Highway

US Highway

Surface Ownership

Bureau of Land Management

Forest Service

Tribal

Private

State



1 inch equals 2.15 miles

DISCLAIMER: This map provides the general location of the A-PLUS ranch. Ranch boundaries may not be exact. For specific ranch information ask the Ranch Contact. Refer to USGS or BLM quadrangle maps for more detailed mapping.

NEA2013

Service Layer Credits: Copyright© 2015 DeLorme
Copyright© 2013 National Geographic Society, i-cubed

Projection: NAD1983 UTM Zone 13