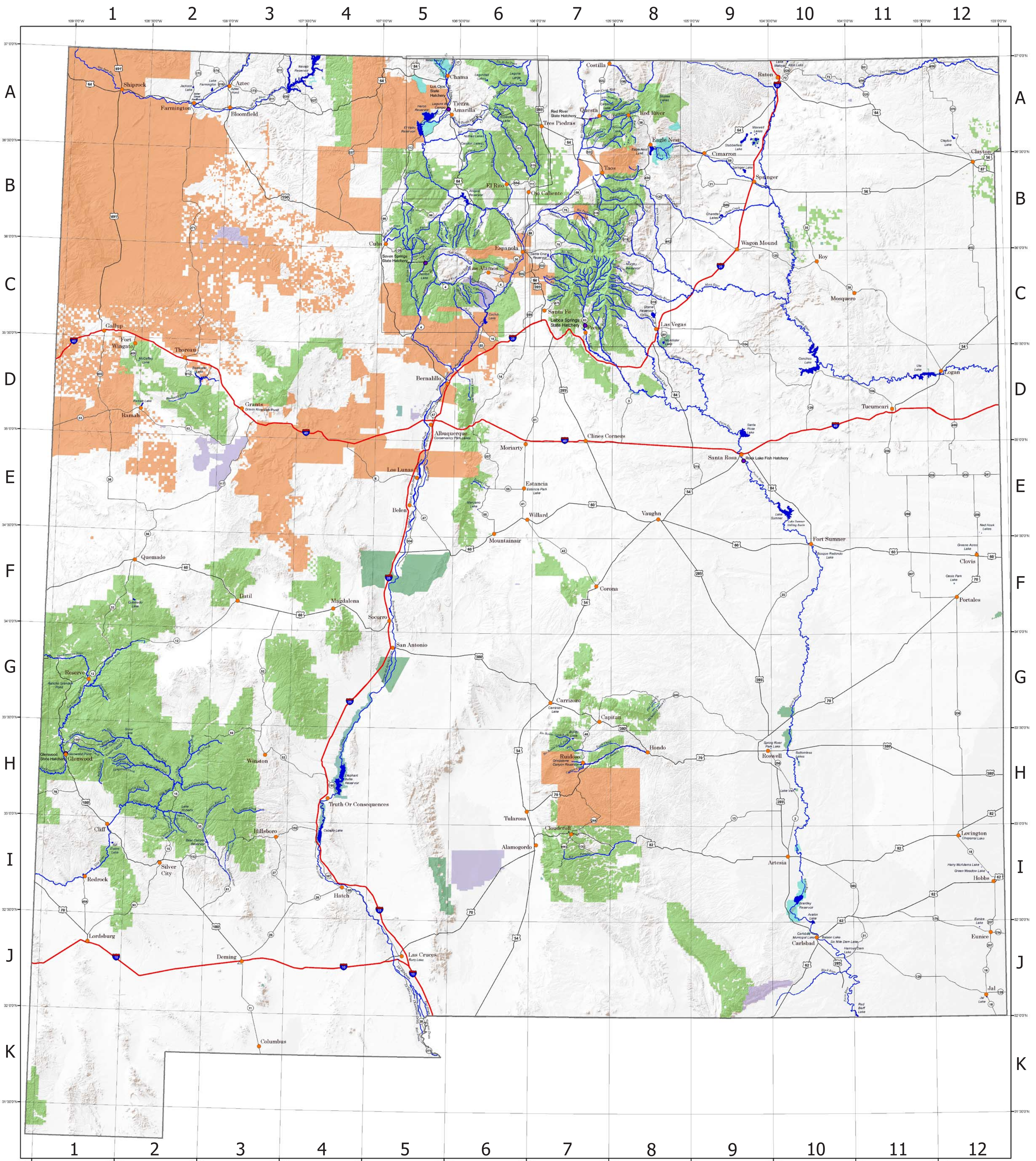
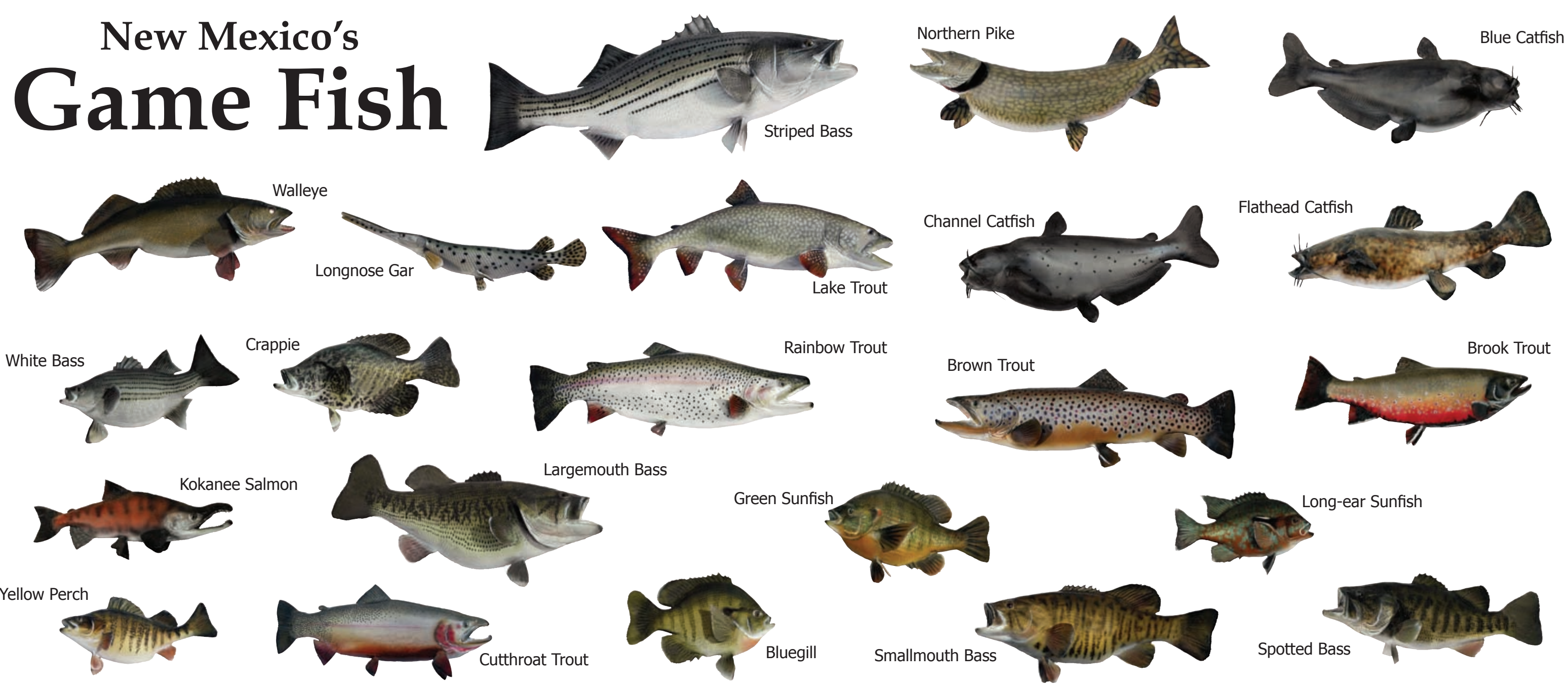




# New Mexico Fishing Waters



## New Mexico's Game Fish



New Mexico  
Department of Game and Fish  
Web site:  
[www.wildlife@state.nm.us](http://www.wildlife@state.nm.us)  
• Up-to-date fishing reports  
• Latest fish stocking  
• License vendors  
• Much more

New Mexico  
**Fishing Waters  
Map**



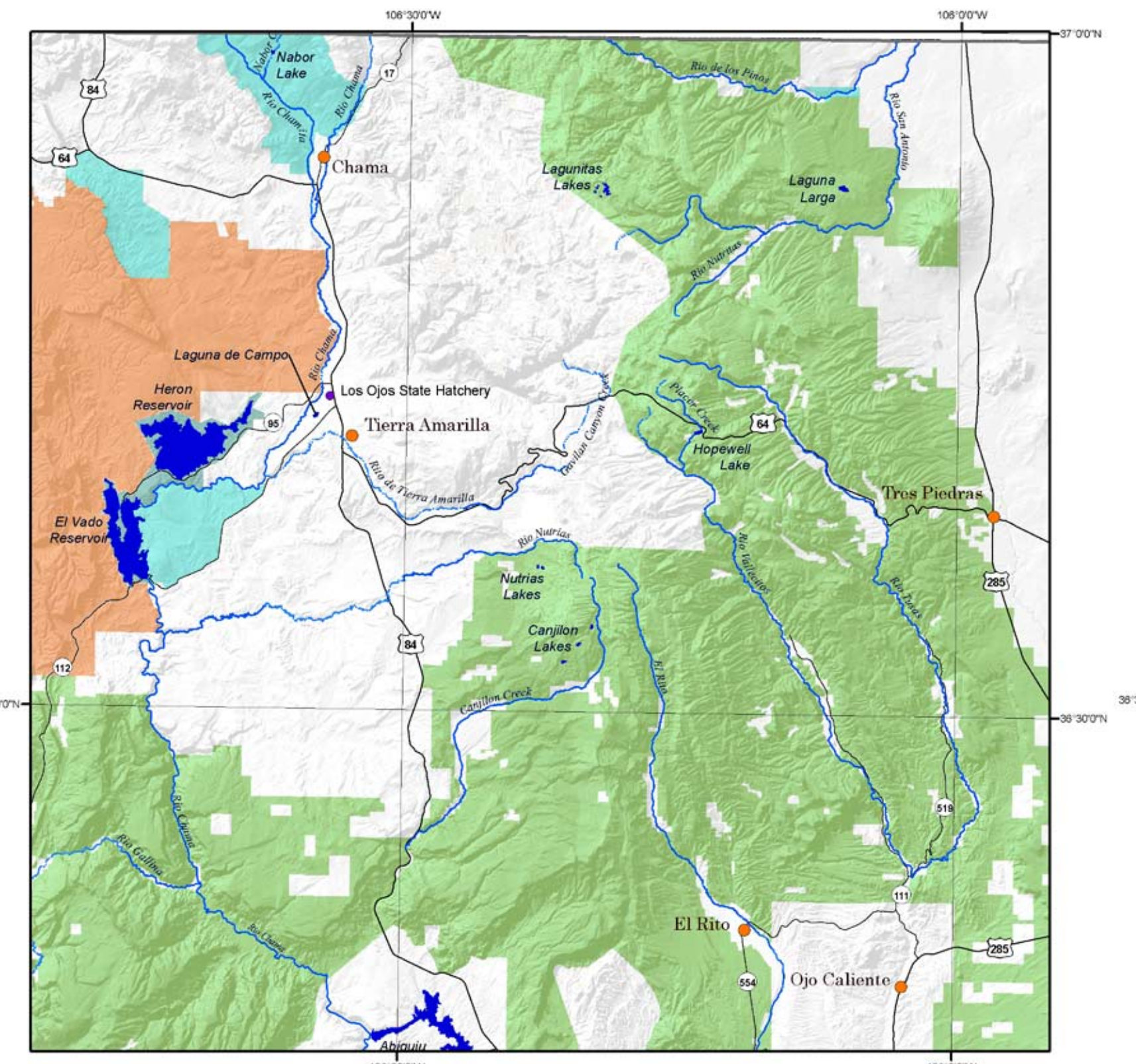
**Turn in a Poacher, Earn a Reward!**  
Rewards for the arrest or charges against game violators are:  
\$750 for cases involving an elk or bighorn sheep  
\$500 for a deer or oryx  
\$350 for a pronghorn antelope  
\$250 for a turkey, bear, cougar, javelina, ibex, Barbary sheep, endangered species, small game, fish, raptors, and furbearers.  
**To report poachers and remain anonymous**  
Call: 800-432-4263



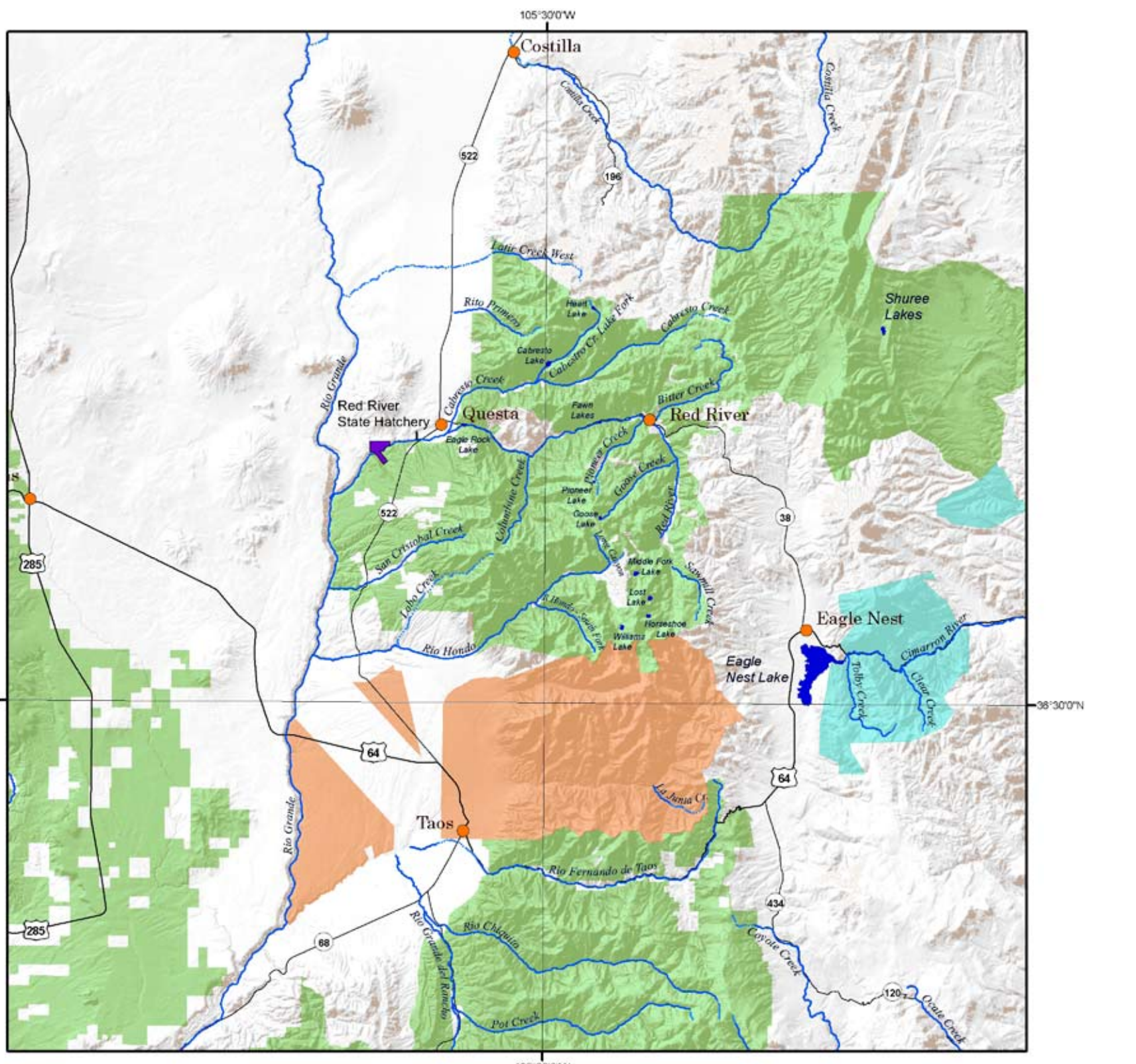


# New Mexico Fishing Waters

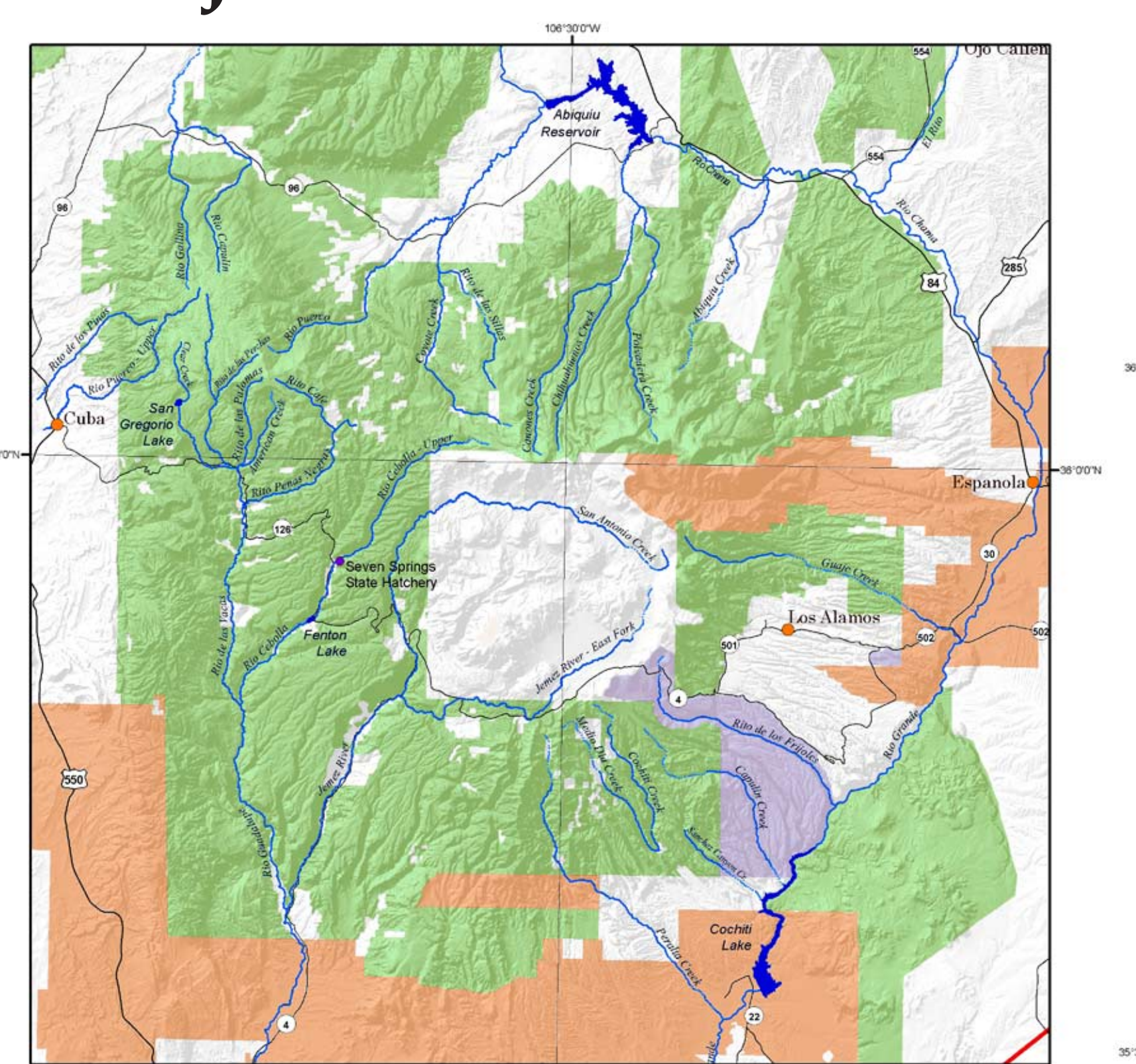
## Chama Area



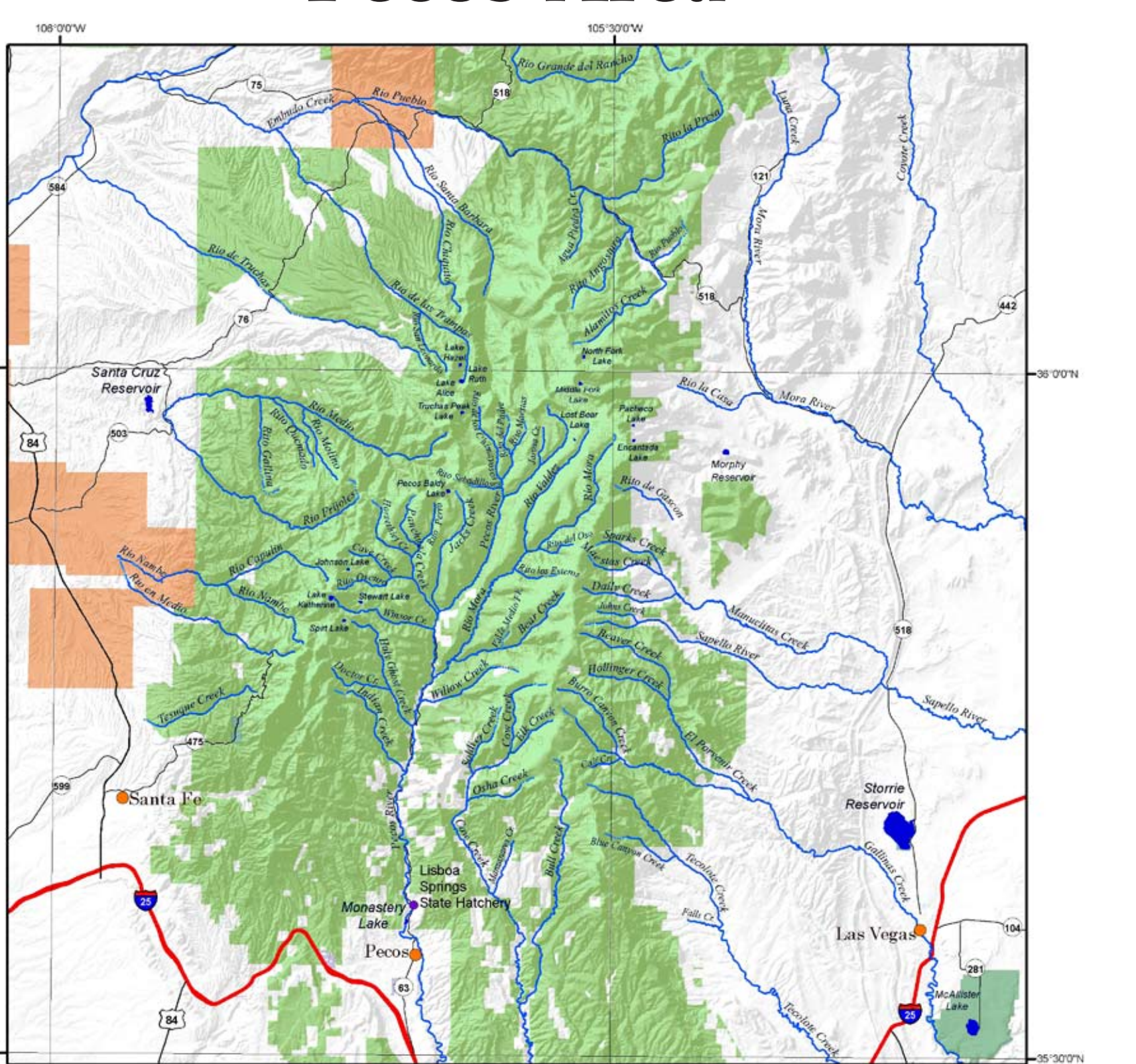
## Taos Area



## Jemez Mountains



## Pecos Area



- PACHECO LAKE** C-8. A five-acre lake at the head of Santiago Creek in Mora County. Cutthroat trout.
- PANCIUELO CREEK** C-5. A small tributary to Vallecitos Creek near Tusa. Brook and cutthroat trout.
- PECOS BALDY LAKE** C-7. An eight-acre lake at the base of Pecos Baldy in the Pecos Wilderness. Cutthroat trout.
- PECOS RIVER** C-7 to J-11. A major river originating in the Pecos Wilderness flowing south into Texas. Cutthroat, rainbow and brown trout live north of Villanueva State Park near the river's crossing with I-25. Warm-water species, including catfish and bass, are found south of Santa Rosa Lake.
- PERALTA CREEK** C-5 to C-6. A small tributary to the Rio Grande on the east side of the Jemez Mountains. Cutthroat trout.
- PERALTA DRAIN** E-5. A drain on the east side of the Rio Grande near the Isleta Diversion. Winter rainbow trout.
- PINE LODGE CREEK** G-5. A small tributary to Vallecitos Creek near Tusa. Brook and cutthroat trout.
- PIONEER CREEK** A-8. A small tributary to the Red River entering from the south above Red River. Cutthroat and rainbow trout.
- PIONEER LAKE** A-8. A two-acre lake at the head of Pioneer Creek above Red River. Rainbow and cutthroat trout.
- PLACER CREEK** B-5. A small tributary to the Gallinas River near Gallina. Cutthroat trout.
- POLVADEIRA CREEK** B-6. A two-acre pond west of Abiquiu. Cutthroat trout.
- POT CREEK (RITO DE LA OLLA)** B-7 to B-8. A small tributary to the Little Rio Grande four miles east of Rancho de Taos. Rainbow, brown, and cutthroat trout.
- QUEMADO LAKE** F-2. A 130-acre Department-owned lake 20 miles south of Quemado. Rainbow trout and tiger muskie.
- RAIN CREEK** H-1. A small tributary to Mogollon Creek in the Gila Wilderness.
- RAMAH LAKE** D-2. A 50-acre lake near Ramah. Rainbow trout, largemouth bass, and bluegill. Most of the shoreline is private. Access is through the town of Ramah.
- RANCHO GRANDE POND** G-1. A 200-acre pond west of Reserve. Rainbow trout.
- RED BLUFF LAKE** J-11. A 200-acre portion of Red Bluff Lake (in Texas) on the Pecos River south of Carlsbad. Largemouth bass, catfish, and white bass.
- RED RIVER** A-7 to A-8. A mountain stream that joins the Rio Grande south of Questa. Mostly rainbow and brown trout with some brook and cutthroat trout at higher elevations.
- RED RIVER STATE HATCHERY** A-7.
- RIO BONITO (BONITO CREEK)** H-7. A small tributary to Bonito Creek 12 miles northwest of Ruidoso. Rainbow, cutthroat, and brook trout.
- RIO BONITO (BONITO CREEK)-SOUTH FORK** H-7. A small tributary to Bonito Creek 12 miles northwest of Ruidoso. Rainbow, cutthroat, and brook trout.
- RIO CAPULIN** C-7. A small tributary to Nambé Creek on the west side of the Pecos Wilderness. Cutthroat trout.
- RIO CAPULIN** B-5. A small tributary to the Gallinas River near Gallina. Cutthroat trout.
- RIO CEBOLLA (CEBOLLA RIVER)-LOWER** C-5. A small stream entering and exiting Fenton Lake near La Cueva. Brown, rainbow, and cutthroat trout.
- RIO CEBOLLA (CEBOLLA RIVER)-UPPER** C-5. A small stream above Seven Springs Trout Hatchery. Cutthroat trout.
- RIO CHAMA (CHAMA RIVER)** A-5 to B-6. A river flowing south through the Pecos River north of Chama to the Rio Grande near Española. Rainbow and brown trout and some warm-water species.
- RIO CHAMITA (CHAMITA CREEK)** A-5. A small tributary to the Chama flowing through the Department-owned Sargent Wildlife Area. Cutthroat, rainbow, and brown trout.
- RIO CHIQUITO** B-7 to B-8. A small tributary to the Little Rio Grande three miles east of Rancho de Taos. Brown and cutthroat trout.
- RIO DE LAS TRAMPAS (LAS TRAMPAS CREEK)** B-7. A small tributary to the Rio Embudo on the northwest side of the Pecos Wilderness. Cutthroat and rainbow trout.
- RIO DE LAS YACAS** C-5. A small tributary to Guadalupe Creek in the Jemez Mountains. Brown, brook, and rainbow trout. Some cutthroat trout at higher elevations.
- RIO DE LOS PINOS** B-7. A medium-size tributary to the Rio Grande flowing from Colorado 20 miles northeast of Tres Piedras. Brown and rainbow trout.
- RIO DE TRUCHAS (TRUCHAS RIVER)** B-7. A small tributary to the Rio Grande, heading near Truchas Peak. Rainbow trout.
- RIO MEDIO** C-7. A small stream heading in the Pecos Wilderness near Pecos Baldy flowing into Santa Cruz Lake. Cutthroat and rainbow trout.
- RIO EN MEDIO** C-7. A small tributary to Tesuque Creek near Tesuque. Brown, rainbow, and cutthroat trout.
- RIO FERNANDO DE TAOS (TAOS CREEK)** B-7 to B-8. A small tributary to the Rio Pueblo de Taos flowing through Taos. Rainbow and brown trout.
- RIO FRIOLES** C-7. A small tributary to the Rio Medio near Santa Cruz Lake. Cutthroat and brown trout.
- RIO GALLINA (GALLINA CREEK)** B-5. A small tributary to the Pecos River, 18 miles below El Vado Lake.
- RIO GRANDE** A-7 to K-5. A major river originating in Colorado and flowing south through New Mexico into the Gulf of Mexico. North of Cochiti Lake there is brown trout, smallmouth bass, some channel catfish with northern pike in the Rio Grande Gorge above Pilar. South of Cochiti Lake there is warm-water species (channel catfish, flathead catfish, white bass) with rainbow trout in the fall waters below reservoirs.
- RIO GRANDE DEL RANCHO (LITTLE RIO GRANDE)** B-7. A small tributary to the Rio Pueblo de Taos east of Rancho de Taos. Brown, rainbow, and cutthroat trout.
- RIO GUADALUPE (GUADALUPE RIVER)** C-5. A small tributary to the Jemez River near Jemez Springs. Brown trout.
- RIO HONDO (HONDO RIVER)** A-7 A-8. A small tributary to the Rio Grande 12 miles north of Taos. Rainbow, brown, and cutthroat trout.
- RIO HONDO-SOUTH FORK** A-8. A small tributary to the Rio Hondo near Taos Ski Valley 10 miles north of Taos. Brown and cutthroat trout.
- RIO LA CASA** C-8. A small tributary to the Mora River, originating in the Pecos Wilderness. Rainbow, and cutthroat trout at higher elevations.
- RIO MOLINA** C-7. A small tributary to the Rio del Medio near Santa Cruz Lake.
- RIO MORA (MORA CREEK)** C-7. A medium-size tributary to the Pecos River, one mile north of Terroer, originating in the Pecos Wilderness. Brown and rainbow trout.
- RIO NAMBE (NAMBE RIVER)** C-7. A small tributary to the Rio Grande, heading near Santa Fe Baldy in the Pecos Wilderness. Rainbow and cutthroat trout.
- RIO NUTRIAS (NUTRIAS CREEK)** A-5 to A-6. A small tributary to the Rio Chama on the northwest side of Canjion Mountains.
- RIO NUTRIAS** A-6. A small tributary to San Antonio Creek west of Tres Piedras. Brown and cutthroat trout.
- RIO PENASCO (PENASCO RIVER)** I-7 to I-8. A small river in the Sacramento Mountains that flows through Mayhill. Rainbow and brown trout. Mostly private land.
- RIO PUEBLO** B-7. A medium-size tributary to the Rio Grande near Tres Ritos. Rainbow and brown trout.
- RIO PUERTO** B-5. A small tributary to the Chama River on the north side of the Jemez Mountains. Trout.
- RIO PUERTO-UPPER** B-5. A small tributary to Chama on the north and west side of the Jemez Mountains. Cutthroat and brown trout.
- RIO RUIDOSO (RUIDOSO RIVER)** H-7 to H-8. A small stream that flows through Ruidoso. Brown and rainbow trout.
- RIO SAN ANTONIO** A-6. A small tributary to Rio de las Yacas west of Tres Piedras. Brown trout.
- RIO SAN LEONARDO (SAN LEONARDO CREEK)** B-7. A small tributary to Las Trampas Creek in the Pecos Wilderness. Cutthroat trout.
- RIO SANTA BARBARA (SANTA BARBARA CREEK)** B-7. A medium-size stream heading in the Pecos Wilderness near Truchas Peak flowing through Penasco. Cutthroat, brown, and rainbow trout.
- RIO TUSA (TUSA CREEK)** B-5. A small tributary to Rio las Yacas in the Jemez Mountains. Cutthroat and rainbow trout.
- RIO VALDEZ** C-7. A small tributary to Mora Creek in the Pecos Wilderness. Cutthroat, brown, and rainbow trout.
- RIO VALLECITOS (VALLECITOS CREEK)** A-6 to B-6. A medium-size stream emptying into the Chama River near Ojo Caliente. Brown, brook, and rainbow trout. Headwaters are on public land.
- RITO ANGOSTURA (ANGOSTURA CREEK)** B-7 to B-8. A small tributary to the Rio Pueblo two miles upstream of Tres Ritos. Cutthroat trout.
- RITO CAFE** C-5. A small tributary to the Rio de las Yacas in the Jemez Mountains. Brown and cutthroat trout.
- RITO DE GASCON (GASCON CREEK)** C-8. A small stream near Rociada. Mostly private land.
- RITO DE LAS PALMAS** C-8. A small tributary to Rio las Yacas in the Jemez Mountains. Cutthroat and rainbow trout.
- RITO DE LAS PERCHAS** B-5. A small tributary to Rio las Yacas on the west side of the Jemez Mountains. Rainbow, brown, and cutthroat trout.
- RITO DE LAS SILLAS** B-5. A small tributary to Rio Escuro near Youngsville. Cutthroat and rainbow trout.
- RITO DE LOS CHIMAYOS** C-7. A small tributary to the Rio del Medio in the Pecos Wilderness. Cutthroat trout.
- RITO DE LOS FRIOLES** C-6. A small stream flowing through Bandelier National Monument. Fishing is allowed upstream from Alcega flow through the Monument. Rainbow and cutthroat trout.
- RITO DE TIERRA AMARILLA (TIERRA AMARILLA CREEK)** A-6. A small tributary to the Chama River near Tierra Amarilla. Mostly private land.
- RITO DE LOS PINOS** B-5. A small stream on the west side of the Jemez Mountains near La Jara. Cutthroat trout.
- RITO DEL OSO** C-7. A small tributary to Mora Creek in the Pecos Wilderness. Brown and cutthroat trout.
- RITO DEL PADRE** C-7. A small tributary to the Pecos River heading in the Pecos Wilderness. Cutthroat, rainbow, and brown trout.
- RITO GALLINA** C-7. A small tributary to the Rio del Medio above Santa Cruz Lake. Cutthroat trout.
- RITO LA PRESA** B-5. A small tributary to Rio las Yacas in the Jemez Mountains.
- RITO LOS ESTEROS** C-7. A small tributary to Mora Creek in the Pecos Wilderness. Brown and cutthroat trout.
- RITO LAS YACAS** C-7. A small tributary to the Rio del Medio in the Pecos Wilderness. Brown and cutthroat trout.
- RITO OSCURO** C-7. A small tributary to Cave Creek in the Pecos Wilderness. Cutthroat trout.
- RITO PACHECO** C-7. A small tributary to the Rio Chupadero near Tesuque.
- RITO PENAS NEGROS** B-5 to C-5. A small tributary to Rio las Yacas in the Jemez Mountains. Brown and cutthroat trout.
- RITO PERRO** C-7. A small tributary to Panchuela Creek near Cowles in the Pecos Wilderness. Brown and rainbow trout.
- RITO PRIMERO** B-7. A small tributary to the Red River near Cerro. Rainbow and cutthroat trout.
- RITO QUEMADO** B-7 to C-7. A small tributary to the Rio del Medio on the west side of the Jemez Mountains. Cutthroat and brown trout.
- ROCK LAKE STATE HATCHERY** E-9.

- A**
- ABIQUIU CREEK** B-6. A small stream on the north side of the Jemez Mountains near Abiquiu. Cutthroat and rainbow trout.
- ABIQUIU RESERVOIR** B-6. A 4,000-acre lake on the Chama River northwest of Abiquiu. Catfish, crappie, largemouth bass, smallmouth bass, walleye, and rainbow trout.
- AGUA PIEDRA CREEK** B-7. A small tributary to the Rio Pueblo, two miles below Tres Ritos. Brown and cutthroat trout.
- ALAMITOS CREEK** B-7 to B-8. A small tributary to the Rio Pueblo. Cutthroat trout.
- ALBUQUERQUE RIVERSIDE DRAIN** D-5. Originates 12 miles north of Albuquerque and parallels the Rio Grande within the city limits. Warm-water species and winter rainbow trout.
- ALGODONES RIVERSIDE DRAIN** D-6. A small drain north of Bernalillo along the east side of the Rio Grande. Warm-water species.
- ALICE LAKE** A-10. A four-acre lake south of Lake Maloya. Rainbow trout.
- AMERICAN CREEK** B-5. A small tributary to the Rio las Yacas in the Jemez Mountains. Cutthroat trout.
- ANIMAS CREEK** H-3. A small stream northwest of Kingston. Cutthroat trout.
- ANIMAS RIVER** A-2 to A-3. A large stream flowing from Colorado near Aztec. Rainbow and brown trout and catfish. Mostly private land.
- ATRISCO RIVERSIDE DRAIN** D-5 to E-5. A drain on the west side of the Rio Grande beginning at the U.S. 85 bridge in Albuquerque. Warm-water species.
- AVONAL LAKE** I-10 to I-10. A 930-acre lake five miles north of Carlsbad on the Pecos River. Channel catfish, largemouth bass, and white bass.
- AZTEC POND** A-2 to A-3. A small pond at Riverside Park within the city limits of Aztec. Catfish, bluegills, and rainbow trout.
- B**
- BATAAN LAKE** J-10. A 42-acre lake on the Pecos River in Carlsbad. Largemouth bass, catfish, and winter rainbow trout.
- BEAR CANYON RESERVOIR** I-3. A 22-acre lake owned by the Department, two miles north of Mimbres. Largemouth bass, rainbow trout, bluegill, catfish, and crappie.
- BEAR CREEK** C-7. A small tributary to Mora Creek in the Pecos Wilderness. Brown and rainbow trout.
- BITTER CREEK** C-8. A small tributary to El Pevorin Creek near the Gallinas River. Brown and rainbow trout.
- BEAVER CREEK** H-2. A small tributary to the East Fork of the Gila River. Brown trout and catfish.
- BELEN RIVERSIDE DRAIN** E-5. A drain along the west side of the Rio Grande starting four miles north of Los Lunas south to Belen. Warm-water species and winter rainbow trout.
- BERNALILLO RIVERSIDE DRAIN** D-5. A small drain on the east side of the Rio Grande near Bernalillo. Warm-water species and winter rainbow trout.
- BILL WATERS LAKE** I-1. A 62-acre lake owned by the Department, seven miles south of Cliff. Largemouth bass, crappie, catfish, bluegill, and winter rainbow trout.
- BITTER CREEK** A-7 to A-8. A small tributary to the Red River. Cutthroat trout.
- BLACK CANYON CREEK** H-2 to H-3. A small tributary to the East Fork of the Gila River near Beaverhead. Rainbow trout below the barrier.
- BLACK RIVER** J-10. A small tributary to the Pecos River near Malaga. Largemouth bass, bluegill, channel catfish, and winter rainbow trout.
- BLUWATER LAKE** D-2. A 2,350-acre lake on the Pecos River 15 miles north of Carlsbad. Crappie, largemouth bass, walleye, catfish, and white bass.
- BURN CREEK** C-7. A small tributary to the Pecos River near Pecos. Cutthroat, brook, brown, and rainbow trout.
- BURN LAKE** J-5. A seven-acre lake in Las Cruces. Bass, channel catfish, bluegill, and winter rainbow trout.
- CABRERO CREEK** C-8. A small tributary to Gallinas Creek. Cutthroat and rainbow trout.
- BUTLER STREET RESERVOIR** A-2. A one-acre lake in Farmington. Largemouth bass, catfish, and rainbow trout.
- C**
- CABALLO LAKE** I-4. An 11,000-acre lake 15 miles downstream of Elephant Butte Lake on the Rio Grande. Largemouth bass, white bass, crappie, catfish, and walleye.
- CABRESTO CREEK** A-8. A small tributary to the Red River northeast of Questa. Rainbow, brown, brook, and cutthroat trout. Some private land.
- CABRESTO CREEK LAKE FORK** A-7. A small tributary to Cabresto Lake six miles northeast of Questa. Cutthroat, brook, and rainbow trout.
- CABRESTO LAKE** A-7. A 15-acre lake six miles northeast of Questa. Rainbow, brook, and cutthroat trout.
- CALF CREEK** C-7. A small tributary to the Gallinas River. Brown trout.
- CLEAR CREEK** A-8 to B-8. A medium-size stream flowing through New Mexico from Colorado to Texas east of Ute Lake. Warm-water fish.
- CANJON CREEK** A-6 to B-6. A small tributary to the Chama River near Canjion. Cutthroat trout. Mostly private land.
- CANJON LAKES** A-6. Six lakes totaling 18 acres, 10 miles northeast of Canjion. Rainbow and cutthroat trout.
- CANONES CREEK** B-5 to B-6. A small stream on the north side of the Jemez Mountains near Youngsville. Cutthroat and rainbow trout.
- CARRIZO CREEK** H-7. A small tributary to the Rio Ruidoso. Brown trout.
- CARRIZO LAKE** G-7. A two-acre lake in Carrizozo. Largemouth bass, catfish, and winter rainbow trout.
- CAYE CREEK** C-7. A small tributary to Panchuela Creek, four miles north of Cowles. Cutthroat and brown trout.
- CHAMBERINO DRAIN** J-5 to K-5. A small drain near Las Cruces. Warm-water fish.
- CHAPARRAL LAKE** I-12. A 10-acre lake in Lovington. Largemouth bass, catfish, bluegill, and winter rainbow trout.
- CHARETTE LAKES** B-9. Two lakes, owned by the Department, totaling 400 acres found 15 miles southwest of Springer. Rainbow trout, brown trout and yellow perch.
- CHERRY CREEK** I-2. A small tributary to Bear Creek near the Gila River above Cliff. Brown trout.
- CHIHAUHUENSIS CREEK** B-5 to B-6. A small tributary to the Gallinas River on the north side of the Jemez Mountains. Cutthroat trout.
- CIMARRON RIVER** A-8 to B-9. A small stream flowing from Eagle Nest Lake through Cimarron to Springer. The Department owns the first seven miles downstream of the lake. Brown and rainbow trout.
- CLAYTON LAKE** A-12. A 176-acre lake owned by the Department, 16 miles northwest of Clayton. Largemouth bass, green sunfish, catfish, walleye, and winter rainbow trout.
- CLEAR CREEK** A-8 to B-8. A small tributary to the Cimarron River in the Colin Neblett Wildlife Area. Cutthroat trout.
- CLEAR CREEK** B-5. Principal tributary to San Gregorio Lake in the Jemez Mountains. Rainbow and cutthroat trout.
- COCHITI CREEK** C-6. A small tributary to the Rio Grande on the east side of the Jemez Mountains. Cutthroat trout.

- C**
- COCHITI LAKE** C-6. A 1,200-acre lake on the Rio Grande 30 miles southwest of Santa Fe. Walleye, bass, channel catfish, crappie, bluegill, yellow perch, northern pike, and rainbow trout.
- COLUMBINE CREEK** A-7. A small tributary to the Red River near Questa. Cutthroat and rainbow trout.
- CONCHAS LAKE** A-10. A 16,600-acre lake on the Canadian River 32 miles northwest of Tucuman. Largemouth bass, smallmouth bass, bluegill, crappie, channel catfish, and walleye.
- CONSERVANCY PARK LAKES (TINGLET BEACH)** D-5. Three ponds totaling 12 acres near the Albuquerque Zoological Park. Catfish, bluegill, and winter rainbow trout. The Catch and Release Pond has trout year-around.
- COOPER CANYON CREEK** G-1. A small tributary to Iron Creek in the Gila National Forest. Rainbow trout.
- CORRALES RIVERSIDE DRAIN** D-5. A drain on the west side of the Rio Grande above the Almendra Bridge near Carlsbad. Brown trout and winter rainbow trout.
- COSTILLA CREEK** A-8. A medium-size river flowing from Colorado west into Costilla Lake then into the Rio Grande. Brown, rainbow, and cutthroat trout.
- COYOTE CREEK** C-7 to D-7. A small tributary to the Pecos River. Rainbow, brown, and cutthroat trout. Mostly private land.
- COYOTE CREEK** A-8. A small tributary to the Chama River on the north side of the Jemez Mountains. Brown and cutthroat trout.
- COYOTE CREEK** B-8 to C-8. A small tributary to the Mora River near Guadalupe. Rainbow and brown trout. Mostly private land.
- CUB CREEK** G-1. A small tributary to the west fork of the Gila River near Willow Creek. Brown and cutthroat trout.
- D**
- DAILY CREEK** C-7 to C-8. A small stream entering Matheles Canyon near Rociada. Brown trout.
- DEL RIO DRAIN** J-5. A small drain near Las Cruces. Largemouth bass, bluegill, and channel catfish.
- DICTOR CREEK** C-7. A small tributary to Holy Ghost Creek north of Pecos. Cutthroat trout.
- DRY CIMARRON RIVER** A-10 to A-12. A small stream near Folsom. Rainbow and brown trout. Limited public trail access.
- E**
- EAGLE CREEK** H-7 to H-8. A small tributary to the Ruidoso River near Alto. Brook trout.
- EAGLE NEST LAKE** A-8. A 2,000-acre lake south of Eagle Nest owned by the Department. Kokanee salmon, yellow perch, rainbow, and cutthroat trout.
- EAGLE ROCK LAKE** A-7. A three-acre lake one mile east of Questa, adjacent to the Red River. Rainbow trout.
- EAST DRAIN** J-5. A small drain near Anthony.
- ESPIÑANT BUTTE RESERVOIR** H-4. A 40,000-acre lake two miles north of Truth or Consequences on the Rio Grande. Largemouth bass, blue, channel and flathead catfish, walleye, crappie, white bass, and striped bass.
- ELK CREEK** C-7. A small tributary to Cow Creek northeast of Pecos. Cutthroat trout.
- EL PORVENIR CREEK** C-8. A small creek on the east side of the Pecos Wilderness. Brown rainbow, and cutthroat trout.
- EL RITO** A-6 to B-6. A small tributary to the Chama River west of El Rito. Rainbow and cutthroat trout.
- EL VADO RESERVOIR** A-5. A 3,500-acre lake on the Chama River, 15 miles west of Tierra Amarilla. Rainbow, brown trout, and Kokanee salmon.
- EMBUDO CREEK** B-7. A medium-size tributary to the Rio Grande near Embudo. Brown trout. Mostly private land.
- ENCANTADA LAKE** C-8. A three-acre lake on the north side of the Pecos Wilderness. Cutthroat trout.
- ENCONDIDA LAKE** F-5. A four-acre lake five miles north of Socorro. Catfish and winter rainbow trout.
- ESTANCIA PARK LAKE** E-6. A one-acre lake in Estancia. Rainbow trout and catfish.
- EUNICE LAKE** J-12. A four-acre lake three miles west of Eunice. Largemouth bass, catfish, bluegill, and winter rainbow trout.
- F**
- FALLS CREEK** C-8. A small tributary to Tecolote Creek west of Mineral Hill. Mostly private land.
- FAWN LAKES** A-5. Two lakes totaling two acres. They are found two miles downstream of Red River. Rainbow and brown trout.
- FENTON LAKE** C-5. A 30-acre lake owned by the Department in the Jemez Mountains 21 miles north of Jemez Springs. Rainbow, cutthroat, and brown trout.
- G**
- GALLINAS CREEK** I-3. A small tributary to the Mimbres River near San Lorenzo.
- GALLINAS RIVER** C-8 to D-9. A small stream flowing out of the Pecos Wilderness east through Las Vegas. Rainbow and brown trout. Mostly private land.
- GAVILAN CANYON CREEK** A-6. A small tributary to the Brazos River about six miles west of Hopewell Lake. Rainbow trout and catfish.
- GILA RIVER** H-2 to I-1. A large river flowing from the Gila National Forest into Arizona. Flathead catfish, channel catfish, smallmouth bass, and rainbow and brown trout.
- GILA RIVER-EAST FORK** H-2. A small stream near Gila Hot Springs. Smallmouth bass, rainbow, and brown trout.
- GILA RIVER-MIDDLE FORK** H-2. A medium-size stream flowing from the Gila Wilderness to Gila Hot Springs. Rainbow and brown trout.
- GILA RIVER-WEST FORK** H-2. A medium-size stream that joins the Gila River at Gila Cliff Dwellings. Rainbow and brown trout.
- GILITA CREEK** H-1. A small tributary to Willow Creek near Snow Lake. Rainbow and brown trout.
- GLENNWOOD POND** H-1. A one-acre lake at Glenwood Trout Hatchery. Rainbow trout.
- GLENNWOOD FISHERY HATCHERY** H-1.
- GOOSE CREEK** A-8. A small tributary to the Red River. Rainbow and cutthroat trout.
- GOOSE LAKE** A-8. A five-acre lake at the head of Goose Creek, a tributary to the Red River. Rainbow and cutthroat trout.
- GRANTS RIVERWALK POND** D-3. A small pond within the city limits of Grants. Rainbow trout and catfish.
- GREEN MEADOW LAKE** I-12. An eight-acre lake in Clovis. Largemouth bass, catfish and winter rainbow trout.
- GREEN MEADOW LAKE** I-12. A 14-acre, Department-owned lake three miles north of Hobbs. Catfish, largemouth bass, bluegill, and winter rainbow trout.
- GRINDSTONE CANYON RESERVOIR** H-7. A 30-acre lake near Ruidoso. Rainbow and brown trout.
- GUASTE CREEK** C-6. A small tributary to the Rio Grande on the east side of the Jemez Mountains.
- H**
- HARROUN DAM LAKE** J-10. A 20-acre lake on the Pecos River 16 miles south of Carlsbad. Largemouth bass, bluegill, and channel catfish.
- HARVY MADANS LAKE** I-12. A two-acre lake four miles north of Hobbs. Catfish and winter rainbow trout.
- HEART LAKE** A-8. A three-acre lake near the head of Cabresto Creek. Cutthroat trout.
- HERON RESERVOIR** A-5. A 6,000-acre lake 10 miles west of Tierra Amarilla. Rainbow trout, lake trout, and Kokanee salmon.
- HOLLINGER CREEK** C-8. A small tributary to El Pevorin Creek on the east side of the Pecos Wilderness. Cutthroat and rainbow trout.
- HOLY GHOST CREEK** C-7. A small tributary to the Pecos River one mile below Terroer. Cutthroat, rainbow, and brown trout.
- HOPWELL LAKE** A-6. A 14-acre lake owned by the Department 16 miles west of Tres Piedras. Rainbow and brook trout.
- HORSETHOE LAKE** A-8. A five-acre lake near the head of the east fork of the Red River. Cutthroat trout.
- HORSETHIEF CREEK** C-7. A small tributary to Panchuela Creek northwest of Cowles. Brook trout.
- I**
- INDIAN CREEK** C-7. A small tributary to the Pecos River north of Pecos. Cutthroat trout.
- J**
- JACK'S CREEK** C-7. A small tributary to the Pecos River in the Pecos Wilderness. Cutthroat trout.
- JACKSON LAKE** D-2. A 60-acre lake owned by the Department five miles northwest of Farmington. Largemouth bass, bluegill, catfish, and rainbow trout.
- JAL LAKE** J-12. A 10-acre lake in Jal. Largemouth bass, catfish, bluegill, and winter rainbow trout.
- JAROSA CREEK** C-7. A small tributary to the Pecos River in the Pecos Wilderness. Cutthroat trout.
- JEMEZ RIVER** C-5. A medium-size stream flowing from the Jemez Mountains near Jemez Springs. Brown and rainbow trout. Some private land.
- JEMEZ RIVER-EAST FORK** C-5 to C-6. A small tributary to the Jemez River, entering at Battleship Rock. Brown and rainbow trout.
- JOHN'S CREEK** C-7. A small tributary to Sapello River. Cutthroat trout.
- JOHNSON LAKE** C-7. A six-acre lake in the Pecos Wilderness. Cutthroat trout.
- L**
- LAGUNA DE CAMPO (BURNS CANYON LAKE)** A-5. A 15-acre lake at the Department-owned Los Ojos Trout Hatchery. Rainbow trout.
- LAGUNA LARGA** A-6. A 15-acre lake northwest of San Antonio Mountain north of Tres Piedras. Rainbow trout.
- LAGUNITAS LAKES** A-6. Two lakes totaling 10 acres, northwest of Tres Piedras. Brook and rainbow trout.
- LA JUNTA CREEK** B-8. A small tributary to the Rio Pueblo de Taos near Tres Ritos. Rainbow, brown, and cutthroat trout.
- LAKE ALICE** B-7. A four-acre lake at the head of Las Trampas Creek in the Pecos Wilderness. Cutthroat trout.
- LAKE FARMINGTON** A-2. A 198-acre lake six miles northeast of Farmington. Largemouth bass, catfish, and rainbow trout.
- LAKE HAZEL** B-7. A four-acre lake at the head of Las Trampas Creek. Cutthroat trout.
- LAKE KATHERINE** C-7. A 12-acre lake in the Pecos Wilderness at the head of Winsor Creek. Cutthroat trout.
- LAKE MALOYA** A-10. A 150-acre lake 12 miles northeast of Raton. Rainbow trout.
- LAKE ROBERTS** H-2. A 71-acre lake owned by the Department on Sapello Creek 12 miles northeast of Silver City. Rainbow trout and catfish.
- LAKE RUTH** H-7. A four-acre lake at the head of Las Trampas Creek in the Pecos Wilderness. Cutthroat trout.
- LAKE SUMNER** F-4. A 650-acre lake 19 miles northwest of Fort Sumner. Bass, bluegill, walleye, catfish, and white bass.
- LAKE SUMNER STILLING BASIN** E-10. The stilling basin and short stretch of the Pecos River below Lake Sumner Dam. Catfish and winter rainbow trout.
- LAKE VAN** H-10. A 12-acre lake one-half mile east of Dexter. Largemouth bass, bluegill, channel catfish, and winter rainbow trout.
- LA MESA DRAIN** J-5. A small drain on the west side of the Rio Grande near Las Cruces. Largemouth and smallmouth bass, catfish, bluegill and crappie.
- LANGSTROTH CANYON CREEK** H-1 to H-2. A small tributary to White Creek in the Gila Wilderness. Brown and rainbow trout.
- LARGO CREEK** A-9. D-6. A small tributary to the Rio Grande near Bernalillo. Mostly private land.
- LATRICE CREEK-WEST** A-7. A small tributary to the Rio Grande near Cerro. Cutthroat, rainbow, and brown trout.
- LISBOA SPRINGS STATE HATCHERY** C-7.
- LITTLE TURKEY CREEK** H-1. A small tributary to Willow Creek in the Gila Wilderness. Brown trout.
- LOBO CREEK** A-7. A small tributary to the Rio Hondo 10 miles north of Taos. Rainbow and cutthroat trout.
- LONG CANYON** A-8. A small tributary to the Rio Hondo 10 miles north of Taos. Brown trout.
- LOS OJOS STATE HATCHERY** A-5.
- LOST BEAR LAKE** C-7. A two-acre lake at the head of the Pecos River in the Pecos Wilderness. Cutthroat trout.
- LOST LAKE** A-8. A six-acre lake at the head of the West Fork of the Red River near Red River. Cutthroat trout.
- LUNA CREEK** B-8. A small tributary to the Mora River above Chason. Brown and cutthroat trout.
- M**
- MAESTRAS CREEK** C-8. A small tributary to Matheles Creek west of Rociada. Cutthroat trout.
- MAESTRAS CREEK** C-8. A small tributary to Sapello Creek near Rociada. Brown trout.
- MANZANARES CREEK** C-7. A small tributary to Cow Creek above Pecos. Brown and rainbow trout.
- MANZANO LAKE** F-6. A small reservoir in the town of Manzano. Rainbow trout.
- MAXWELL LAKES** A-9. 500 acres of lakes including Lake 13, Stubbsfield, and Laguna Madre lakes. Channel catfish, largemouth bass, walleye, yellow perch, and rainbow trout.
- MCELLISTER LAKE** C-8. A 100-acre lake owned by the Department on the Las Vegas National Wildlife Refuge. Rainbow trout.
- MCGAFFEY LAKE** D-1. A 14-acre lake owned by the Department six miles south of Fort Wingate near Gallup. Rainbow trout and catfish.
- MEADOW CREEK** H-2 to I-2. A small tributary to Sapello Creek 20 miles north of Silver City. Rainbow trout.
- MEDIO DIA CREEK** C-7. A small tributary to the Rio Grande on the south side of the Jemez Mountains.
- MICHALLAS CANYON CREEK** G-11. A small tributary to Hondo Creek in the Capitan Mountains.
- MIDDLE FORK LAKE** A-8. A six-acre lake at the head of the middle fork of the Red River. Rainbow and cutthroat trout.
- MIDDLE FORK LAKE** C-7. A five-acre lake at the head of the Rio la Casa in the Pecos Wilderness near Mora. Cutthroat trout.
- MIMBRES RIVER** H-3 to I-3. A small stream on the west side of the Black Range north of Mimbres.
- MINERAL CREEK** H-1. A small tributary to the San Francisco River near Mogollon. Brown trout.
- MONASTERY LAKE** C-7. A six-acre lake leased by the Department two miles north of Pecos. Rainbow trout.
- MORA RIVER** B-5 to C-10. A medium-size stream flowing through the town of Mora. Rainbow and brown trout. Mostly private land.
- MORPHY RESERVOIR** C-8. A 50-acre lake leased by the Department three miles northwest of LeDoux. Rainbow trout.
- N**
- NABOR CREEK** A-5. A small tributary to the Chamita on the Department-owned Sargent Wildlife Area. Cutthroat trout.
- NABOR LAKE** A-5. A four-acre lake on Nabor Creek located on the Department-owned Sargent Wildlife Area. Cutthroat trout.
- NAVAJO RESERVOIR** A-3 to A-4. A 15,000-acre lake on the San Juan River 15 miles northeast of Blanco. Rainbow and brown trout. Kokanee salmon, largemouth and smallmouth bass, yellow perch, channel catfish, crappie, bluegill, and northern pike.
- NED HOUL LAKES** E-12. Two small lakes five miles northwest of Clovis. Catfish and winter rainbow trout.
- NEGROTTI CREEK** G-1. A small tributary to Gilita Creek near Reserve. Rainbow trout.
- NEMEXAS DRAIN** K-5. A small drain on both sides of the Rio Grande near the Texas-New Mexico state line. Warm-water fish.
- NORTH FORK LAKE** C-7. A two-acre lake at the head of the north fork of Rio la Casa in the Pecos Wilderness. Cutthroat trout.
- NUTRIAS LAKES (TROUT LAKES)** A-6. Three lakes totaling 20 acres near the head of Nutrias Creek on the northwest side of the Canjion Mountains. Cutthroat and rainbow trout.
- O**
- OASIS PARK LAKE** F-12. A two-acre lake in Oasis State Park north of Portales. Catfish and winter rainbow trout.
- OCATE CREEK** B-8 to B-10. A small tributary to the Canadian River entering Charete Lakes. Brown trout.
- OSHA CREEK** C-7. A small tributary to Cow Creek eight miles northeast of Pecos. Rainbow and cutthroat trout.

- P**
- PACHECO LAKE** C-8. A five-acre lake at the head of Santiago Creek in Mora County. Cutthroat trout.
- PANCIUELO CREEK** C-5. A small tributary to Vallecitos Creek near Tusa. Brook and cutthroat trout.
- PECOS BALDY LAKE** C-7. An eight-acre lake at the base of Pecos Baldy in the Pecos Wilderness. Cutthroat trout.
- PECOS RIVER** C-7 to J-11. A major river originating in the Pecos Wilderness flowing south into Texas. Cutthroat, rainbow and brown trout live north of Villanueva State Park near the river's crossing with I-25. Warm-water species, including catfish and bass, are found south of Santa Rosa Lake.
- PERALTA CREEK** C-5 to C-6. A small tributary to the Rio Grande on the east side of the Jemez Mountains. Cutthroat trout.
- PERALTA DRAIN** E-5. A drain on the east side of the Rio Grande near the Isleta Diversion. Winter rainbow trout.
- PINE LODGE CREEK** G-5. A small tributary to Vallecitos Creek near Tusa. Brook and cutthroat trout.
- PIONEER CREEK** A-8. A small tributary to the Red River entering from the south above Red River. Cutthroat and rainbow trout.
- PIONEER LAKE** A-8. A two-acre lake at the head of Pioneer Creek above Red River. Rainbow and cutthroat trout.
- PLACER CREEK** B-5. A small tributary to the Gallinas River near Gallina. Cutthroat trout.
- POLVADEIRA CREEK**