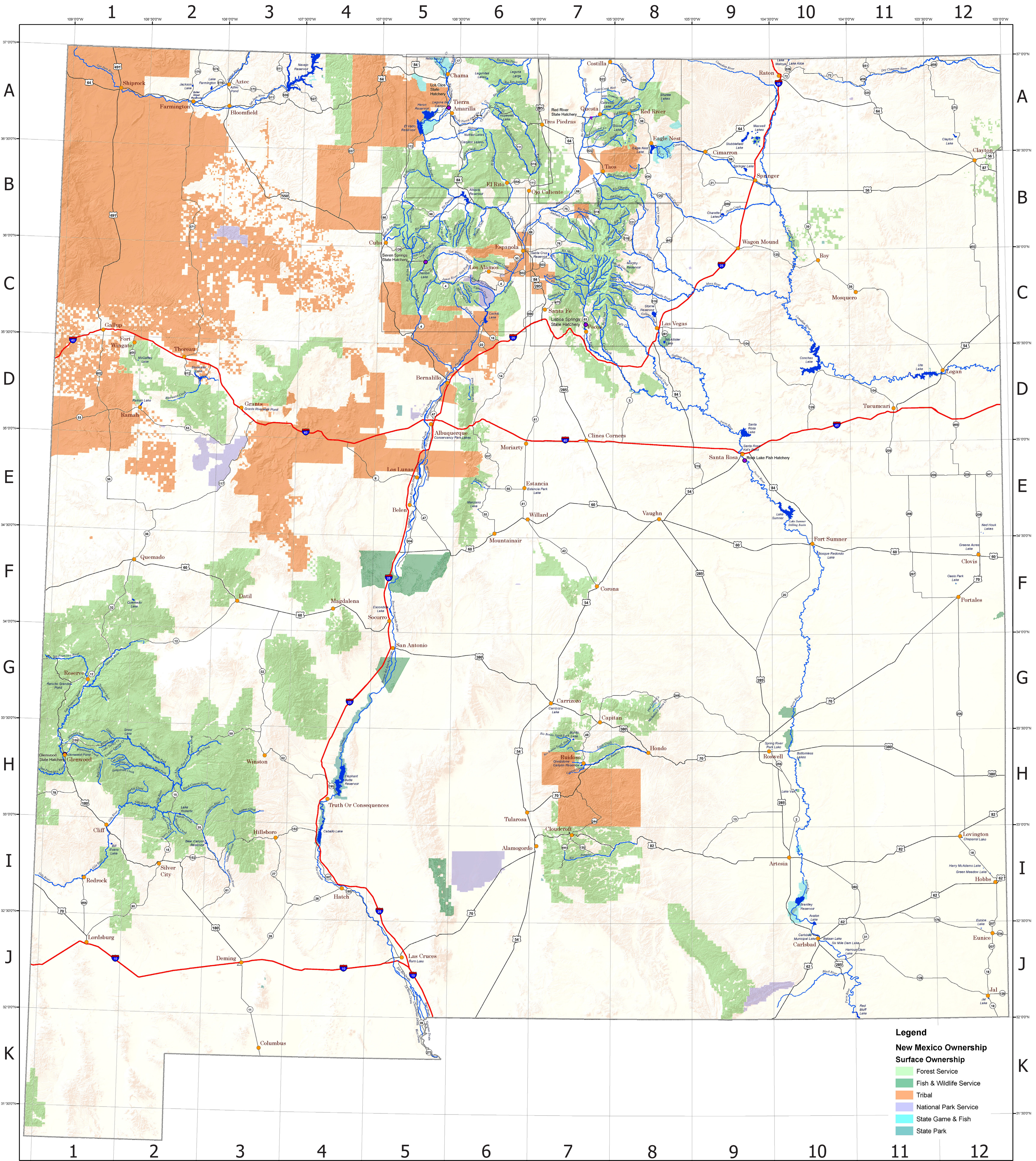


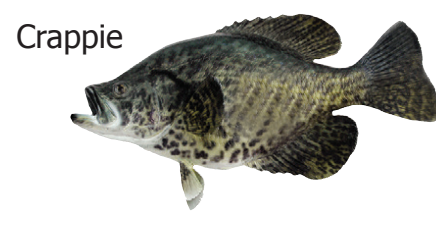
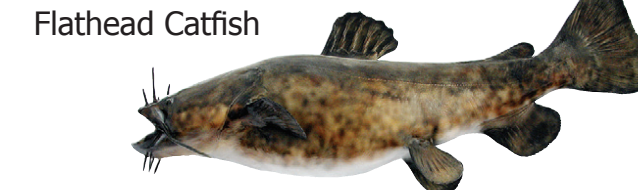
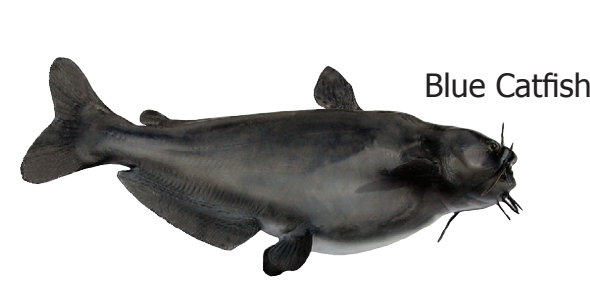


New Mexico Fishing Waters



Legend
New Mexico Ownership
 Surface Ownership
 Forest Service
 Fish & Wildlife Service
 Tribal
 National Park Service
 State Game & Fish
 State Park

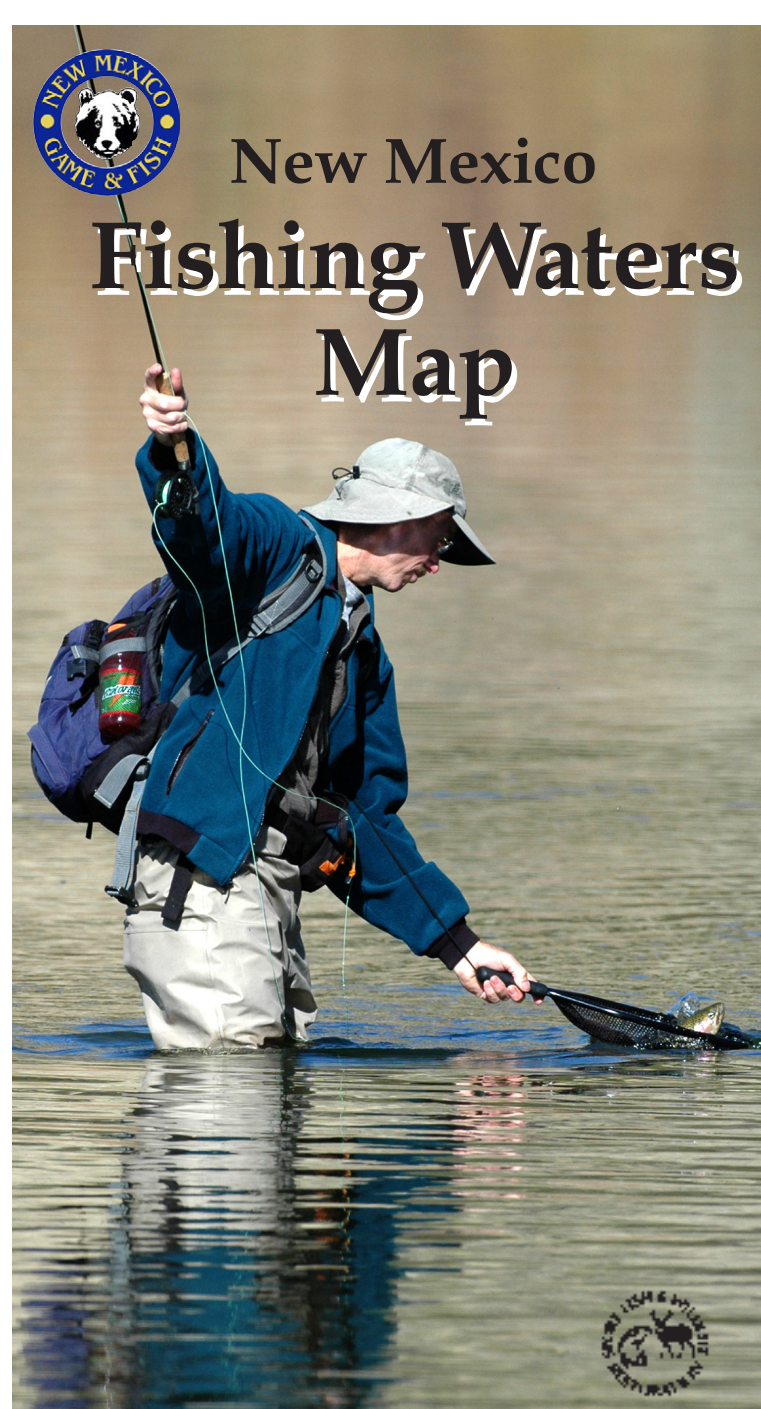
New Mexico's Game Fish



New Mexico
 Department of Game and Fish
 Web site:
www.wildlife@state.nm.us
 • Up-to-date fishing reports
 • Latest fish stocking
 • License vendors
 • Much more



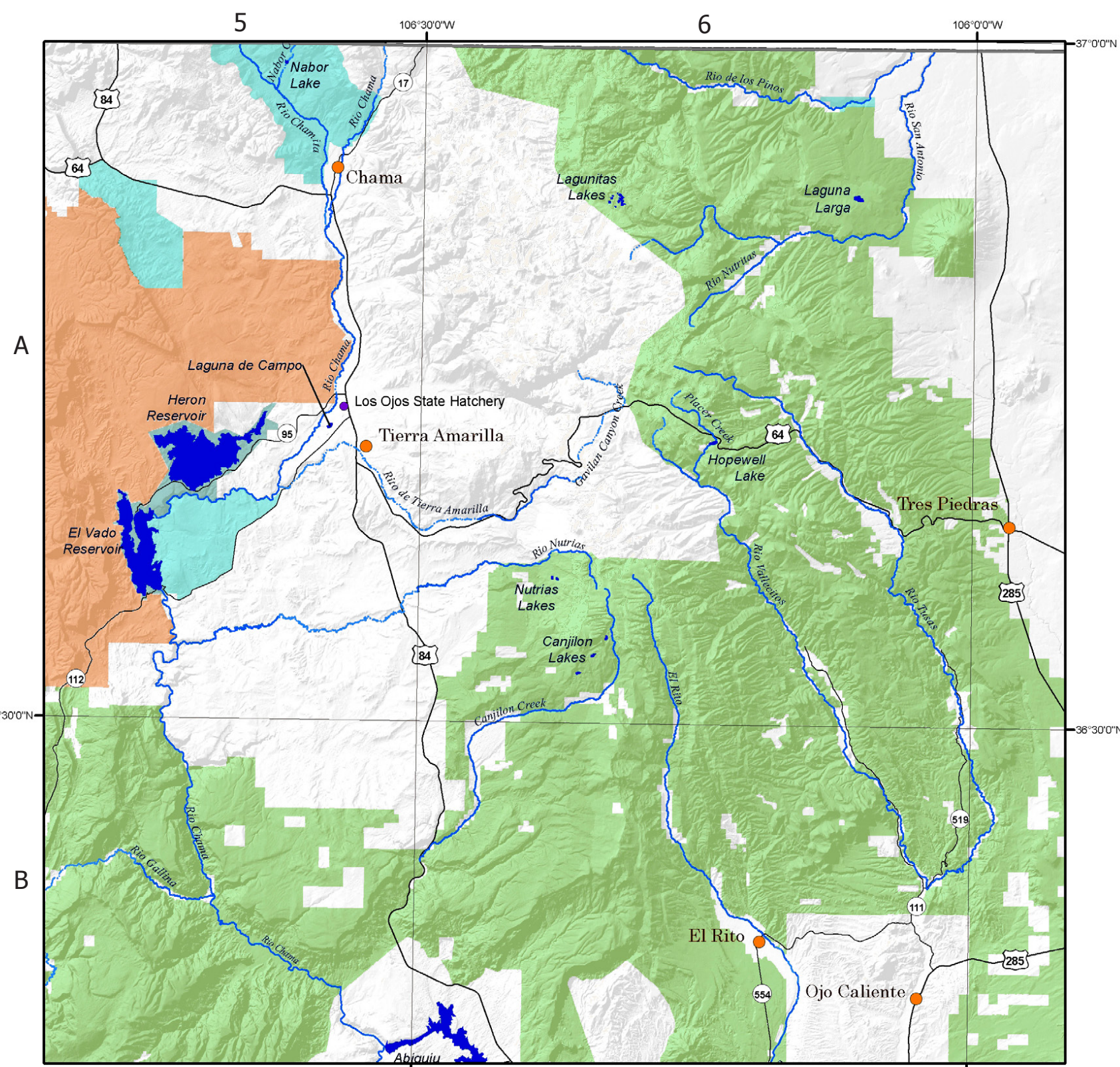
Turn in a Poacher, Earn a Reward!
 Rewards for the arrest or charges against game violators are:
 \$750 for cases involving an elk or bighorn sheep
 \$500 for a deer or oryx
 \$350 for a pronghorn antelope
 \$250 for a turkey, bear, cougar, javelina, ibex, Barbary sheep, endangered species, small game, fish, raptors, and furbearers.
 To report poachers and remain anonymous
 Call: 800-432-4263



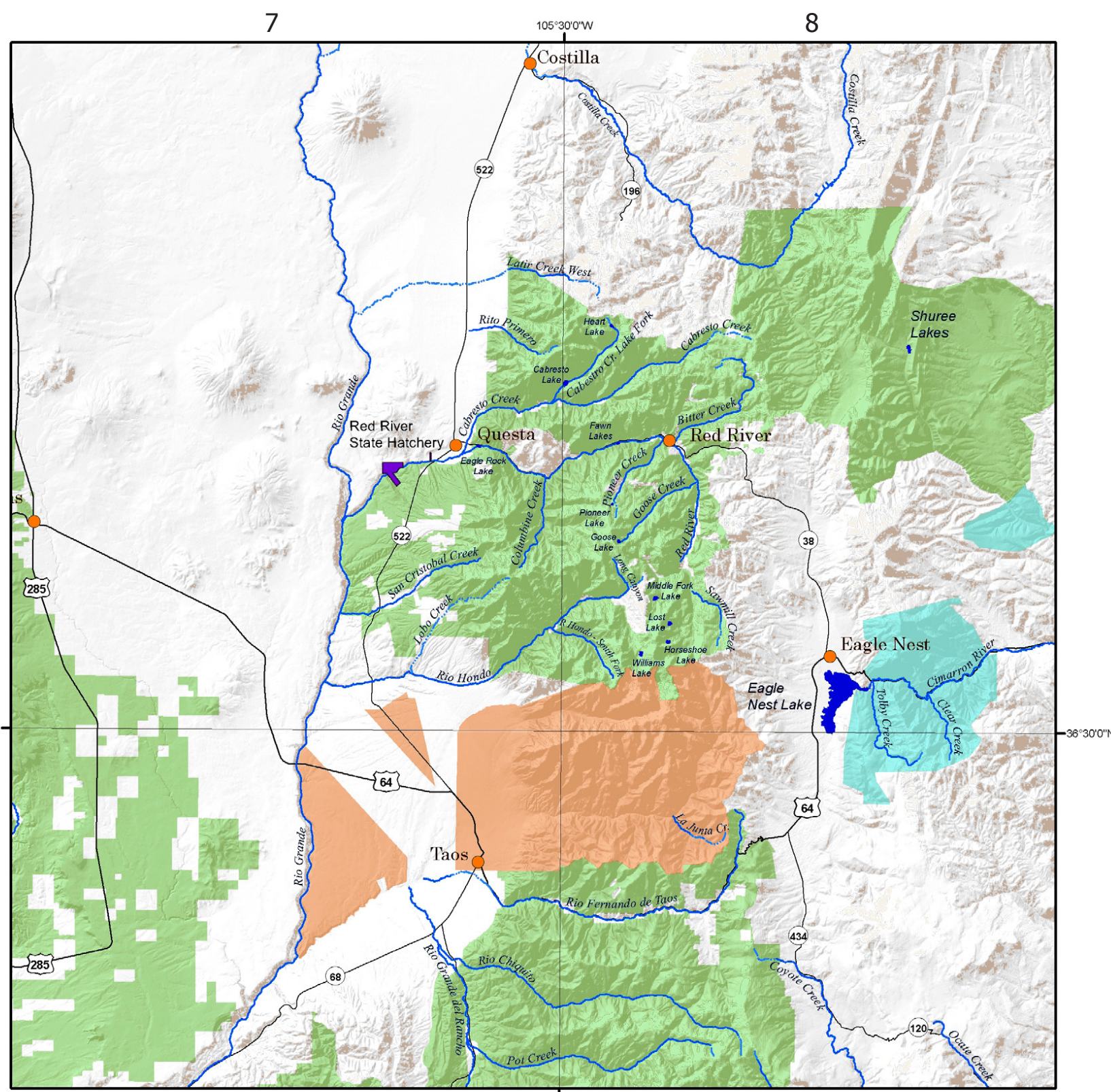


New Mexico Fishing Waters

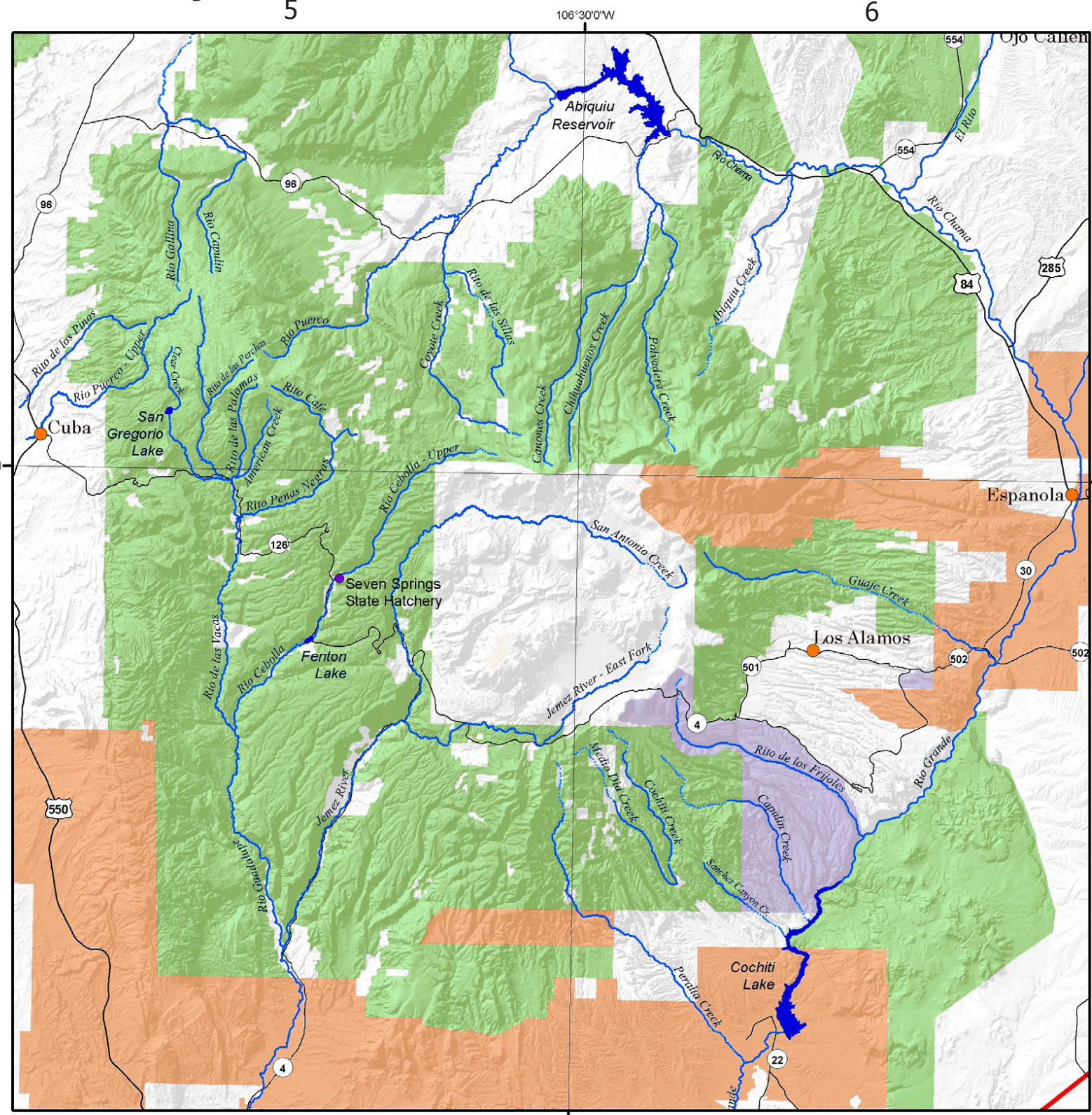
Chama Area



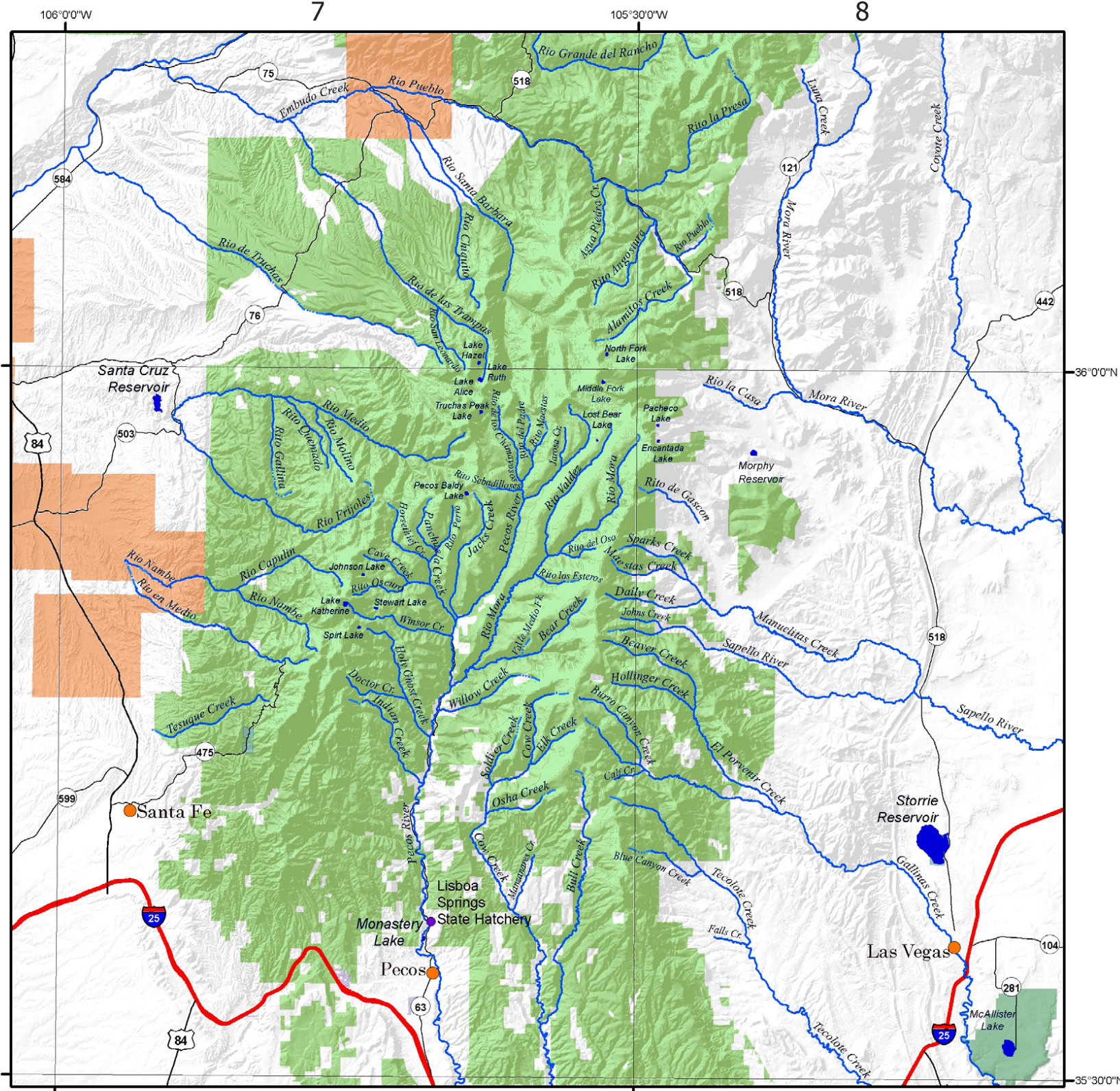
Taos Area



Jemez Mountains



Pecos Area



- PACHICO LAKE** C-8. A five-acre lake at the head of Santiago Creek in Mora County. Cutthroat trout.
- PANCHUELO CREEK** G-5. A medium-size tributary to the Pecos River near Cowles. Rainbow and brown trout.
- PECOS BALDY LAKE** C-7. An eight-acre lake at the base of Pecos Baldy in the Pecos Wilderness. Cutthroat trout.
- PECOS RIVER** C-7 to J-11. A major river originating in the Pecos Wilderness flowing south into Texas. Cutthroat, rainbow and brown trout live north of Villanueva State Park near the river's crossing with I-25. Warm-water species, including catfish and bass, are found south of Santa Rosa Lake.
- PERALTA CREEK** C-5 to C-6. A small tributary to the Rio Grande on the southeast side of the Jemez Mountains. Cutthroat trout.
- PERALTA DRAIN** E-5. A drain on the east side of the Rio Grande near the Isleta Diversion. Winter rainbow trout.
- PIEDRO CREEK** G-8. A small tributary to Vallecitos Creek near Tusas. Brook and cutthroat trout.
- PIONEER CREEK** A-8. A small tributary to the Red River entering from the south above Red River. Cutthroat and rainbow trout.
- PIONEER LAKE** A-8. A two-acre lake at the head of Pioneer Creek above Red River. Rainbow and cutthroat trout.
- PIPER CREEK** A-7. A small tributary to Vallecitos Creek near Tusas. Brook and cutthroat trout.
- POLVADEIRA CREEK** B-6. A small tributary to the Chama River west of Abiquiu. Cutthroat trout.
- POT CREEK (RITO DE LA OLLA)** B-7 to B-8. A small tributary to the Little Rio Grande four miles east of Rancho de Taos. Rainbow, brown, and cutthroat trout.
- QUEMADO LAKE** F-2. A 130-acre Department-owned lake 20 miles south of Quemado. Rainbow trout and tiger muskie.
- RAIN CREEK** H-1. A small tributary to Mogollon Creek in the Gila Wilderness.
- RAMAH LAKE** D-2. A 50-acre lake near Ramah. Rainbow trout, largemouth bass, and bluegill. Most of the shoreline is private. Access is through the town of Ramah.
- RANCHO GRANDE POND** G-1. A two-acre pond west of Reserve. Rainbow trout.
- RED BLUFF LAKE** J-11. A 200-acre portion of Red Bluff Lake (in Texas) on the Pecos River south of Carlsbad. Largemouth bass, catfish, and white bass.
- RED RIVER** A-7 to A-8. A mountain stream that joins the Rio Grande south of Questa. Mostly rainbow and brown trout with some brook and cutthroat trout at higher elevations.
- RED RIVER STATE HATCHERY** A-7.
- RED RIVER HATCHERY POND** A-7. Rainbow trout.
- RIO BONITO (BONITO CREEK)** H-7. A small tributary to Bonito Creek 12 miles northwest of Ruidoso. Rainbow and brook trout.
- RIO BONITO (BONITO CREEK)-SOUTH FORK** H-7. A small tributary to Bonito Creek 12 miles northwest of Ruidoso. Rainbow, cutthroat, and brook trout.
- RIO CAPULIN** C-7. A small tributary to Nambé Creek on the west side of the Pecos Wilderness. Cutthroat trout.
- RIO CAPULIN** B-5. A small tributary to the Gallinas River near Gallina. Cutthroat trout.
- RIO CEBOLLA (CEBOLLA RIVER)-LOWER** C-5. A small stream entering and exiting Fenton Lake near La Cueva. Brown, rainbow, and cutthroat trout.
- RIO CEBOLLA (CEBOLLA RIVER)-UPPER** C-5. A small stream above Seven Springs Trout Hatchery. Cutthroat trout.
- RIO CHAMA (CHAMA RIVER)** A-5 to B-6. A river flowing south from Colorado, north of Chama to the Rio Grande near Española. Rainbow and brown trout and some warm-water species.
- RIO CHAMITA (CHAMITA CREEK)** A-5. A small tributary to the Chama flowing through the Department-owned Sargent Wildlife Area. Cutthroat, rainbow, and brown trout.
- RIO CHIQUITO** B-7 to B-8. A small tributary to the Little Rio Grande three miles east of Rancho de Taos. Brown and cutthroat trout.
- RIO DE LAS TRAMPAS (LAS TRAMPAS CREEK)** B-7. A small tributary to the Rio Embudo on the northwest side of the Pecos Wilderness. Cutthroat and rainbow trout.
- RIO DE LAS VACAS** C-5. A small tributary to Guadalupe Creek in the Jemez Mountains. Brown, brook, and rainbow trout. Some cutthroat trout at higher elevations.
- RIO DE LOS PINOS (LOS PINOS RIVER)** B-7. A medium-size tributary to the Rio Grande heading near Colorado 20 miles northwest of Taos. Rainbow, brown, and cutthroat trout.
- RIO DE LAS TRUCHAS (TRUCHAS RIVER)** B-7. A small tributary to the Rio Grande, heading near Truchas Peak. Rainbow trout.
- RIO EN MEDIO** C-7. A small tributary to Tesaque Creek near Tesaque. Brown, rainbow, and cutthroat trout.
- RIO FERNANDO DE TAOS (TAOS CREEK)** B-7 to B-8. A small tributary to the Rio Pueblo de Taos flowing through Taos. Rainbow and brown trout.
- RIO FRIOLES** C-7. A small tributary to the Rio Medio near Santa Cruz Lake. Cutthroat and brown trout.
- RIO GALLINA (GALLINA CREEK)** B-5. A small tributary to the Chama River, 18 miles below El Vado Lake.
- RIO GRANDE** A-7 to A-8. A major river originating in Colorado and flowing south through New Mexico into the Gulf of Mexico. North of Cochiti Lake there is brown trout, smallmouth bass, some channel catfish with northern pike in the Rio Grande Gorge above Pilar. South of Cochiti Lake there is warm-water species (channel catfish, flathead catfish, white bass) with rainbow trout in the tail waters below reservoirs.
- RIO GRANDE DEL RANCHO (LITTLE RIO GRANDE)** B-7. A small tributary to the Rio Pueblo de Taos east of Rancho de Taos. Brown, rainbow, and cutthroat trout.
- RIO GUADALUPE (GUADALUPE RIVER)** C-5. A small tributary to the Jemez River near Jemez Springs. Brown trout.
- RIO HONDO (HONDO RIVER)** A-7 to A-8. A small tributary to the Rio Grande 12 miles north of Taos. Rainbow, brown, and cutthroat trout.
- RIO HONDO-SOUTH FORK** A-8. A small tributary to the Rio Hondo near Taos Ski Valley 10 miles north of Taos. Brown and cutthroat trout.
- RIO LA CASA** C-8. A small tributary to the Mora River, originating in the Pecos Wilderness. Rainbow, and cutthroat trout at higher elevations.
- RIO MEDIO** C-7. A small stream heading in the Pecos Wilderness near Pecos Baldy flowing into Santa Cruz Lake. Cutthroat, brown, and rainbow trout.
- RIO MOLINA** C-7. A small tributary to the Rio del Medio near Santa Cruz Lake. Cutthroat trout.
- RIO MORA (MORA CREEK)** C-7. A medium-size tributary to the Pecos River, one mile north of Terroer, originating in the Pecos Wilderness. Brown, cutthroat and rainbow trout.
- RIO NAMBE (NAMBE RIVER)** C-7. A small tributary to the Rio Grande, heading near Santa Fe Baldy in the Pecos Wilderness. Brown, brook, and rainbow trout. Headwaters are on public land.
- RIO NUTRIAS (NUTRIAS CREEK)** A-5 to A-6. A small tributary to the Rio Chama on the northwest side of Canjion Mountains.
- RIO NUTRIAS** A-6. A small tributary to San Antonio Creek west of Tres Piedras. Brown and cutthroat trout.
- RIO PASCOS (PASCOS RIVER)** I-7 to I-8. A small river in the Sacramento Mountains that flows through Mayhill. Rainbow and brown trout. Mostly private land.
- RIO PUEBLO** B-7. A medium-size tributary to the Rio Grande near Tres Ritos. Rainbow and brown trout.
- RIO PUERCO** B-5. A small tributary to the Chama River on the north side of the Jemez Mountains. Trout and rainbow trout.
- RIO PUERCO-UPPER** B-5. A small stream on the north and west side of the Jemez Mountains. Cutthroat and brown trout.
- RIO RUIDOSO (RUIDOSO RIVER)** H-7 to H-8. A small stream that flows through Ruidoso. Brown and rainbow trout.
- RIO SAN ANTONIO** A-6. A small tributary to Rio de los Pinos west of Tres Piedras. Brown trout.
- RIO SAN LEONARDO (SAN LEONARDO CREEK)** B-7. A small tributary to Las Trampas Creek in the Pecos Wilderness. Cutthroat trout.
- RIO SANTA BARBARA (SANTA BARBARA CREEK)** B-7. A medium-size stream heading in the Pecos Wilderness near Truchas Peak. Flowing through Pecos. Cutthroat, brown, and rainbow trout.
- RIO TUSAS (TUSAS CREEK)** A-6 to B-6. A small tributary to Vallecitos Creek near Tres Piedras. Brown trout.
- RIO VALDEZ** C-7. A small tributary to Mora Creek in the Pecos Wilderness. Cutthroat, brown, and rainbow trout.
- RIO VALLECITOS (VALLECITOS CREEK)** A-6 to B-6. A medium-size stream emptying into the Chama River near Ojo Caliente. Brown, brook, and rainbow trout. Headwaters are on public land.
- RITO ANGSTURIA (ANGSTURIA CREEK)** B-7 to B-8. A small tributary to the Rio Pueblo two miles upstream of Tres Ritos. Cutthroat trout.
- RITO CAFE** B-5. A small tributary to the Rio de las Vacas in the Jemez Mountains. Brown and cutthroat trout.
- RITO DE LAS SILLAS** B-5. A small tributary to Mora Creek in the Pecos Wilderness. Brown and cutthroat trout.
- RITO DE LAS PALOMAS** B-5. A small tributary to Rio las Vacas in the Jemez Mountains. Cutthroat and rainbow trout.
- RITO DE LAS PERCHAS** B-5. A small tributary to Rio las Vacas on the west side of the Jemez Mountains. Rainbow, brown, and cutthroat trout.
- RITO DE LOS CHIMAYOSOS** C-7. A small tributary to Rio Encino near Youngville. Cutthroat and rainbow trout.
- RITO DE LOS FRIOLES** C-6. A small stream flowing through Bandelier National Monument. Fishing is allowed upstream from Akove House through the Monument. Brook and cutthroat trout.
- RITO DE TIERRA AMARILLA (TIERRA AMARILLA CREEK)** A-6. A small tributary to the Chama River near Tierra Amarilla. Mostly private land.
- RITO DE LOS PINOS** B-5. A small stream on the west side of the Jemez Mountains near La Jara. Cutthroat trout.
- RITO DEL OJO** C-7. A small tributary to Mora Creek in the Pecos Wilderness. Brown and cutthroat trout.
- RITO DEL PADERO** C-7. A small tributary to the Pecos River heading in the Pecos Wilderness. Cutthroat, rainbow, and brown trout.
- RITO GALLINA** C-7. A small tributary to the Rio del Medio above Santa Cruz Lake. Cutthroat trout.
- RITO LA PRESA** B-5. A small tributary to Rio las Vacas in the Jemez Mountains.
- RITO LOS ESTEROS** C-7. A small tributary to Mora Creek in the Pecos Wilderness. Brown and cutthroat trout.
- RITO MAESTAS** C-7. A small fork of the Rio del Padre in the Pecos Wilderness. Brown and cutthroat trout.
- RITO OSCURO** C-7. A small tributary to Cave Creek in the Pecos Wilderness. Cutthroat trout.
- RITO PACHICO** C-7. A small tributary to the Rio Chupadero near Tesaque.
- RITO PEGAS NEGRAS** B-5 to C-5. A small tributary to Rio las Vacas in the Jemez Mountains. Brown and cutthroat trout.
- RITO PERRO** C-7. A small tributary to Panchuela Creek near Cowles in the Pecos Wilderness. Brown and rainbow trout.
- RITO PRIMERO** B-7. A small tributary to the Red River near Cowles. Rainbow and cutthroat trout.
- RITO QUEMADO** B-7 to C-7. A small tributary to the Rio del Medio on the west side of the Pecos Wilderness. Cutthroat and brown trout.
- ROCK LAKE STATE HATCHERY** E-9.
- SABINAL DRAIN** E-5. A small drain southeast of Belen. Warm water fish.
- SAN ANTONIO CREEK** C-5 to C-6. A small tributary to the Jemez River near Battleship Rock. Rainbow and brown trout. Some private land.
- SANCHEZ CANYON CREEK** C-6. A small tributary to the Rio Grande in Sandoval County. Cutthroat trout.
- SAN CRISTOBAL CREEK** A-7. A small tributary to the Rio Grande near Taos. Cutthroat trout.
- SAN FRANCISCO RIVER** G-1 to H-1. An intermittent stream located near Reserve and Glenwood. Catfish.
- SAN GREGORIO LAKE** B-5. A 32-acre lake on Clear Creek in the San Pedro Park Wilderness. Cutthroat and rainbow trout.
- SAN JUAN RIVER** A-1 to A-3. A large river flowing from Navajo Dam northwest into Colorado. Rainbow, brown, and cutthroat trout from the dam to Blanco. Catfish, brown, and striped bass downstream from Blanco.
- SANTA CRUZ RESERVOIR** C-7. A 90-acre lake on Rio Frijoles 10 miles east of Española. Rainbow and brown trout, and bluegills.
- SANTA ROSA LAKE** D-9. A 1,500-acre reservoir on the Pecos River 10 miles north of Santa Rosa. Catfish, bass, crappie, and walleye.
- SANTA ROSA POND** D-9. A pond adjacent to Blue Hole Lake near the city of Santa Rosa. Open only to anglers younger than 12 to 65 years old and the handicapped. Rainbow trout.
- SAPELLO RIVER** C-8. A small tributary to the Mora River 25 miles northwest of Las Vegas. Rainbow, cutthroat, and brown trout.
- SPRINGER LAKE** I-2 to H-2. A small tributary to the Chama River near Silver City. Rainbow trout.
- SAWIMILL CREEK** A-8. A small tributary of the Red River upstream of the town of Red River. Cutthroat trout.
- SEVEN SPRINGS STATE HATCHERY** C-5.
- SEVEN SPRINGS BROOD POND** C-5. Cutthroat and rainbow trout.
- SHUREE LAKES** A-8. Three small lakes on the Valle Vidal unit of the Carson National Forest. Rainbow trout.
- SIX-MILE DAM LAKE** J-10. A 125-acre lake on the Pecos River six miles southeast of Carlsbad. Largemouth bass, bluegill, and catfish.
- SNOW CREEK** H-2. A small tributary to the Middle Fork of the Gila River on the north side of the Gila Wilderness. Rainbow trout.
- SNOW LAKE** H-2. A 100-acre lake owned by the Department. Situated on the north side of the Gila Wilderness, 40 miles southeast of Reserve.
- SOCCORO DRAIN** F-5. A small drain near Socorro. Warm-water species.
- SPIRIT CREEK** C-7. A small tributary to Cow Creek in the Pecos Wilderness. Cutthroat trout.
- SPIRIT LAKE** C-7. A small tributary to Maesta Creek west of Rosicida. Cutthroat trout.
- SPIRIT LAKE** C-7. A seven-acre lake at the head of Holy Ghost Creek in the Pecos Wilderness. Rainbow and cutthroat trout.
- SPRING RIVER PARK LAKE** H-9. A one-acre lake in Roswell. Winter rainbow trout and catfish.
- STEWART LAKE** C-7. A five-acre lake in the Pecos Wilderness near Winsor Creek. Trout. Cutthroat trout.
- STORIE RESERVOIR** C-8. A 1,200-acre lake three miles north of Las Vegas, leased by the Department. Rainbow trout and warm-water species.
- STUBBLEFIELD LAKE** A-9. Near Maxwell Lakes. Largemouth bass, crappie, green sunfish, channel catfish, walleye, and yellow perch.
- TAYLOR CREEK** A-2 to A-3. A small tributary to the East Fork of the Gila River above Wall Lake. Rainbow trout.
- TECOTELE CREEK** C-8 to D-8. A small tributary to Cow Creek in the Pecos Wilderness. Cutthroat trout.
- TOMÉ DRAIN** E-5. A small drain near Belen.
- TESUQUE CREEK** C-7. A small stream five miles north of Santa Fe. Brown and rainbow trout. Mostly private land.
- TOLBY CREEK** A-8 to B-8. A small tributary to the Cimarron River in the Colin Neblett Wildlife Area near Eagle Nest. Brown and cutthroat trout.
- TRUCHAS PEAK LAKE** B-7 to C-7. A four-acre lake in the Pecos Wilderness on the east side of Truchas Peak. Cutthroat trout.
- TULAROSA RIVER** G-1 to G-2. A small tributary to the San Francisco River near Apache Creek. Brown and rainbow trout.
- TURKEY CREEK** H-2. A small tributary to the Gila River near Cliff. Rainbow and brown trout.
- U LUTE LAKE** D-11 to D-12. An 820-acre lake two miles west of Logan. Largemouth bass, crappie, walleye, channel catfish, and white bass.
- WALLEE MIDDLE FORK** D-8. A small tributary to Bear Creek in the Pecos Wilderness. Cutthroat trout.
- WEST DRAIN** K-5. A small drain that enters Nemexas Drain near the Texas-New Mexico state line. Warm-water species.
- WHITE CREEK** H-1 to H-2. A small tributary to the West Fork of the Gila River in the Gila Wilderness. Brown and rainbow trout are found below the waterfall near White Creek Cabin.
- WHITWATER CREEK** H-1. The principal stream exiting the west side of the Gila Wilderness. Rainbow and brook trout in the headwaters.
- WILLIAMS LAKE** A-8. A 10-acre lake at the head of the Hondo River near Taos. Cutthroat trout.
- WILLOW CREEK** C-7. A small tributary to the Pecos River near Terroer. Cutthroat, brook, rainbow, and brown trout.
- WILLOW CREEK** H-1. Main tributary to Middle Fork of the Gila River 20 miles east of Mogollon.
- WINSOR CREEK** C-7. A small tributary to the Pecos River near Cowles. Cutthroat and rainbow trout.
- O**
- OGNIS PARK LAKE** E-12. A two-acre lake in Ognis State Park north of Portales. Catfish and winter rainbow trout.
- OCATE CREEK** B-8 to B-10. A small tributary to the Canadian River entering Churette Lakes. Brown trout.
- OSHIA CREEK** C-7. A small tributary to Cow Creek eight miles northeast of Pecos. Rainbow and cutthroat trout.

See Fishing Rules and Information Booklet for Current Fishing Regulations