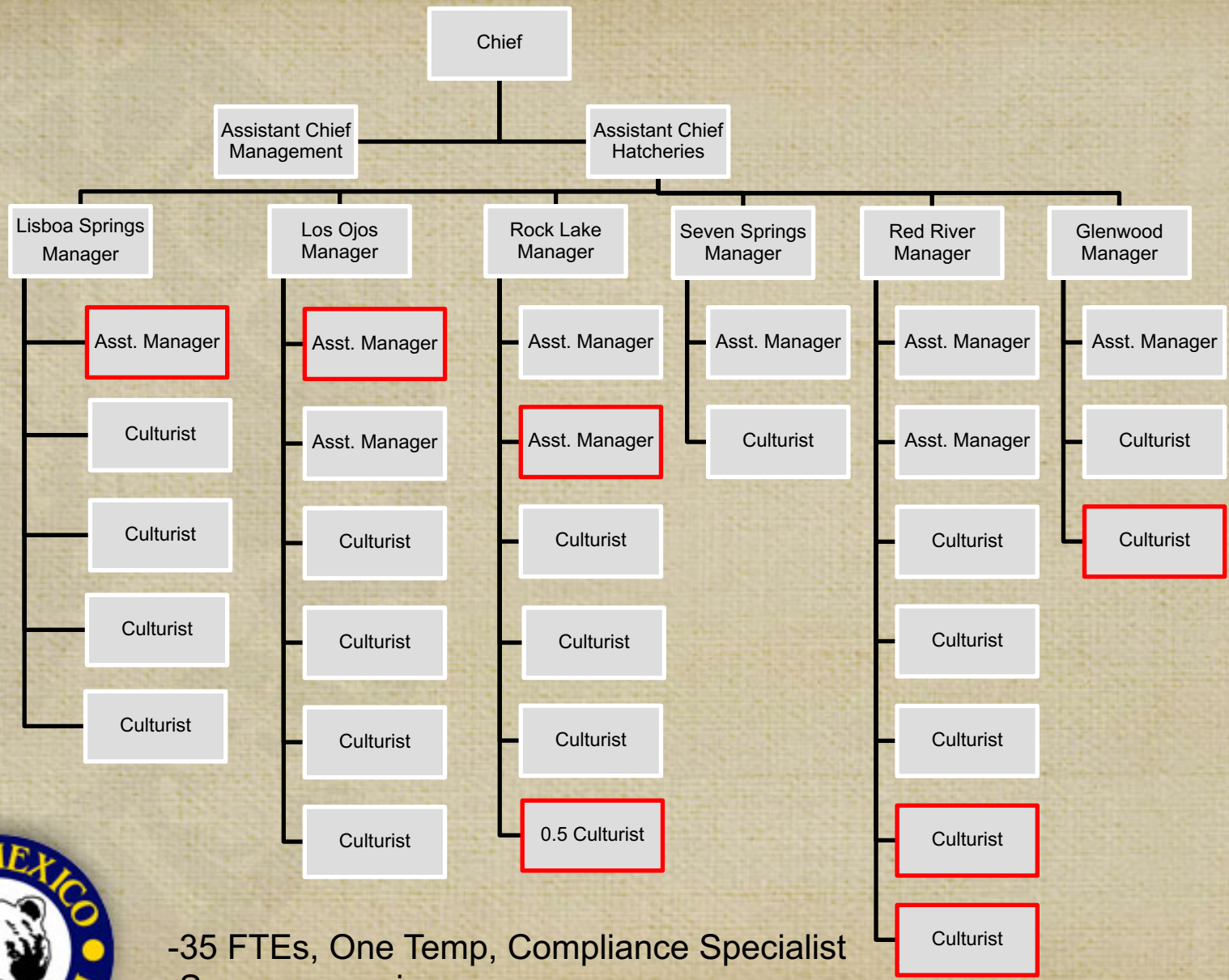


Overview of the Department's Hatchery System Operations

**Agenda Item 12
December 3, 2020**





-35 FTEs, One Temp, Compliance Specialist
 -Seven vacancies
 -Recruitment for four positions underway

Diverse Duties



Los Ojos - 1932
-Rainbow, YY Brook Trout, Kokanee
-2.5 mil. fish/year

Red River - 1941
-Rainbow Trout
-1.4 mil. trout/year

Seven Springs - 1936
-RGCT broodstock
-250,000 RGCT/year

Lisboa Springs - 1921
-Rainbow Trout
-255,000 trout/year

Rock Lake - 1964
-Rainbow trout – 225,000/year
-Walleye – 10 mil./year
-Largemouth Bass – 600K
-Channel catfish

Glenwood - 1938
-Rainbow, Gila Trout
-332,000 trout/year

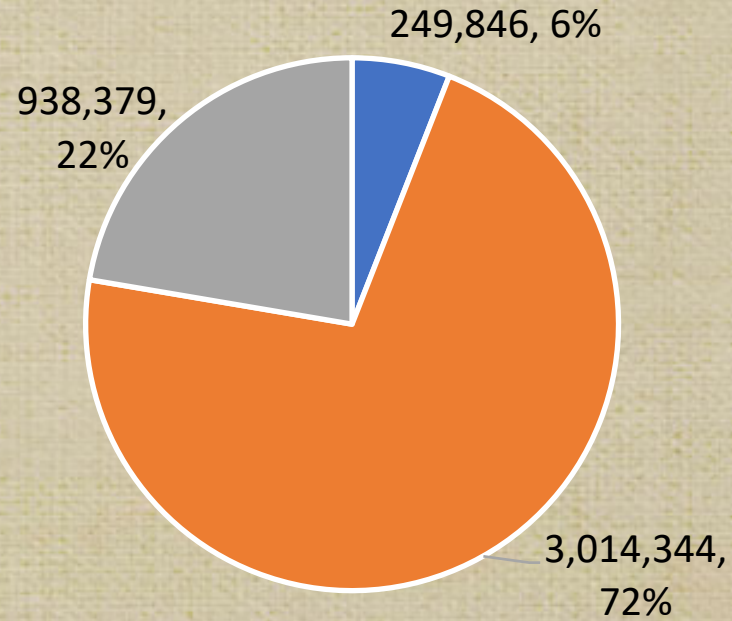


Approximately 14 million fish or 650K lbs. reared and stocked annually

Hatchery Contributions

- Legislative Target
- 640,000 lbs.

Angler Days - License Year 2018-19



■ Wild Fisheries ■ Partial Hatchery Dependence ■ Hatchery Dependent

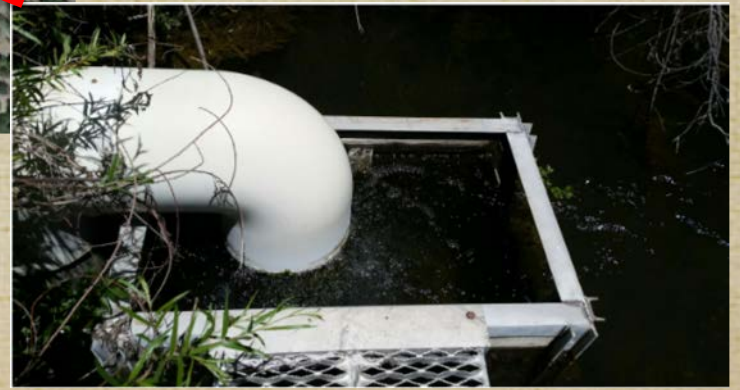


Fish Health

- Maintain health certifications for all hatcheries
- Whirling Disease



- NPDES Discharge Permits



Lisboa Springs Diversion



Fish barrier



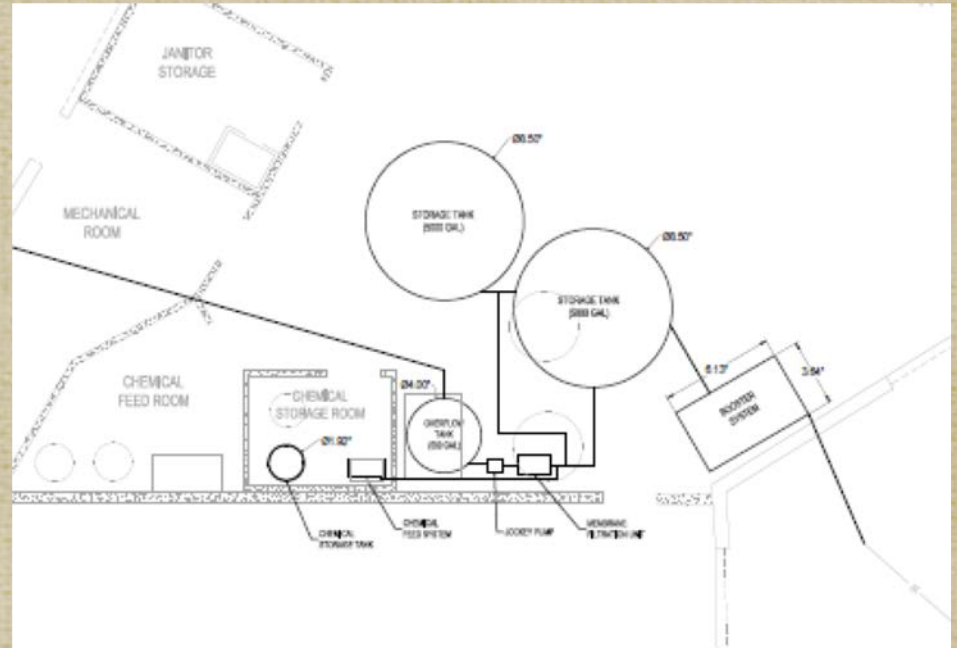
Fish ladder
Benefits trout and RG Chub



Pipeline Replacement



Los Ojos Visitors Center and Water System

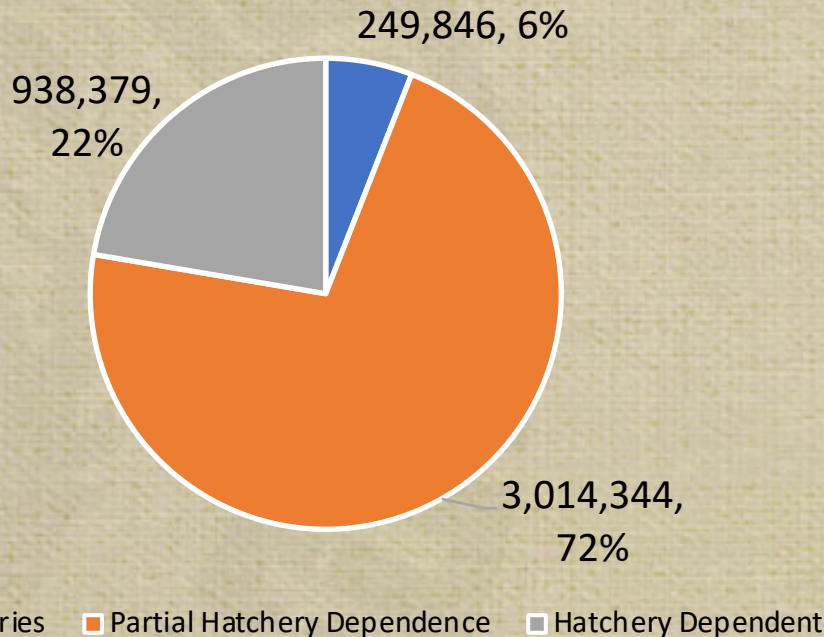


Other Capital Project Needs



Long-term Purpose of Hatcheries

Angler Days - License Year 2018-19



- Limited resource, created expectations
- Create memorable experience – larger fish, different species
- Species conservation efforts
- Types of fisheries – put/take, put/grow/take, wild fisheries



Questions?

