

COMMISSION MEETING AGENDA BRIEFING

Meeting Date: August 15, 2025

Agenda Number: 6

Presenter: Paul Varela

Corroborator:

Agenda Title: Approval of FY27 Budget Proposal

1. Summary of Agenda Item

The Department will present and discuss the proposed Fiscal Year (FY) 2027 Operating Budget Request for Commission review, approval and certification. The Department must seek final approval from the Commission for submission by the statutory deadline of September 1st, 2025.

2. Background Information

Department has sought Commission guidance on budget priorities, areas of emphasis, and desired changes in the this year's budget request. The Department incorporated the State Game Commission's guidance into the Fiscal Year 2027 Operating Budget request.

3. Strategic Plan References and Possible Impacts of Agenda Item

Submission of the Department's Operating Budget request is based on statutory requirements and is a component of the Department's Strategic Plan. The budget provides for the Department's annual operational capabilities for biological, law enforcement and a wide variety of other services in New Mexico that support a nearly \$1 billion annual economy in wildlife-associated recreation in New Mexico.

Objective 2 of the Administration Program portion of the Strategic Plan is to "Maintain financial and procurement accountability and integrity." This request is consistent with that strategy and objective and is also required by state statute and rule.

4. Considerations Regarding Duplications and/or Conflicts with Existing Rules or Statutes

None

5. Description and Summary of Public Involvement Process and Results

The Department prepares the annual Operating Budget request with consideration from Commission direction, executive branch guidance, legislative action and requests offered during previous Game Commission meetings within the past year.

6. Suggested Motion

The Department respectfully suggests the following motion unless Commission discretion indicates a different course of action:

"Move to approve the Department's Fiscal Year 2027 Operating Budget and allow Department staff to make technical adjustments and changes necessary to incorporate assessment rate changes provided to the Department and other executive agencies after this meeting, and prior to the statutory deadline."

FY27 PROPOSED BUDGET

NEW MEXICO DEPARTMENT OF WILDLIFE



CONSERVATION, STEWARDSHIP AND RECREATION

The New Mexico Department of Wildlife brings nearly \$1 billion a year to the state's economy, often to rural areas where funds are needed most. We are primarily funded by our customers — the hunters and anglers who enable us to conserve wildlife and provide recreational opportunities that benefit everyone.

Currently license sales provide over \$30 million dollars annually, our primary funding source. With the license fee increase contained in Senate Bill 5 we are projecting to see an increase of \$8-\$10 million dollars annually in license sales. This is supplemented by the federal Sport Fish and Wildlife Restoration Program which provides an additional \$20 million by matching on a three-to-one basis the dollars we invest in conservation. With these funds from hunting and fishing we provide services that extend far beyond license sales or patrolling for poachers.

- Our highly qualified biologists use the best science available to manage the state's wildlife for New Mexicans, including more than 100,000 hunters and 800,000 outdoor enthusiasts to enjoy annually.

- Millions of trout, catfish, walleye and other fish are stocked each year for the enjoyment of more than 250,000 anglers who visit our state's lakes and streams.

- Partnerships with private landowners, land management agencies and conservation groups to improve habitat and allow healthy populations of wildlife to thrive.



- Nearly 100 skilled and professionally trained conservation officers patrol the state to protect wildlife from poaching and other illegal activities, respond to human-wildlife encounters, provide educational opportunities, and keep people, property and wildlife out of jeopardy.

- By managing the state's Off-Highway Vehicle Program, we help riders safely and responsibly enjoy the outdoors through safety training, permit requirements and enforcement.

- Each year, more than 100,000 of New Mexicans learn about their wildlife heritage and wildlife conservation through our hunter safety courses, fishing clinics, public school outreach and the National Archery in the Schools Program.

The combined support of hunters and anglers in the field makes possible the programs and services that steward some of New Mexico's most precious natural resources.



New Mexico Department of Wildlife

wildlife.dgf.nm.gov

Conserving New Mexico's Wildlife for Future Generations

DEPARTMENT OVERVIEW (ALL FUNDS)

Total Employees	320
Total Budget	\$59,969,400
Personnel Services	\$33,342,200
Contractual Services	\$5,078,100
Other Costs	\$21,366,800
Other Financing Cost	\$182,300

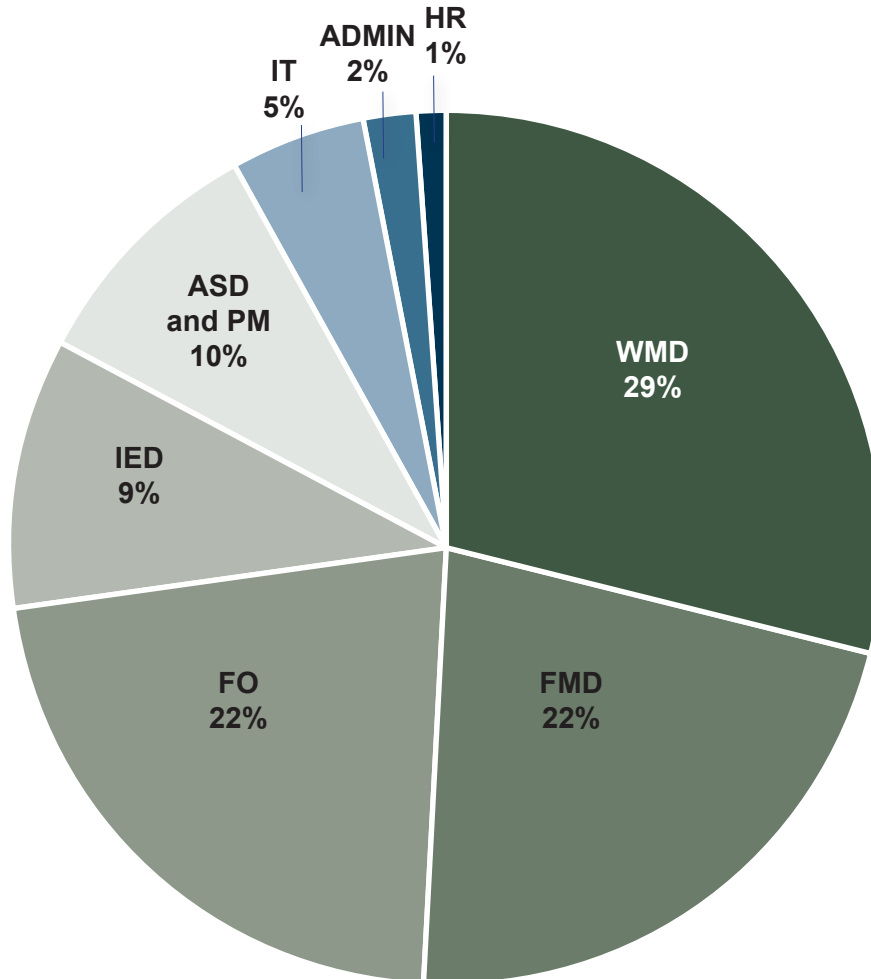
OVERVIEW

The New Mexico Department of Wildlife is requesting \$59.9 million for fiscal year 2027 to provide objective and balanced conservation programs to benefit wildlife species and habitats statewide, to regulate and enforce wildlife laws, rules and regulations, to restore habitat and wildlife species statewide, provide outdoors skills-based education, and to promote New Mexico's wildlife-associated recreation including hunting and fishing.

The following sections of this report contain examples of projects the Department anticipates undertaking in FY27. These examples are not exclusive or listed in order of priority.

ABBREVIATIONS KEY

- ADMIN:** Administration
- IT:** Information Systems
- IED:** Information and Education Division
- ASD:** Administrative Services Division
- FMD:** Fisheries Management Division
- FO:** Field Operations Division
- WMD:** Wildlife Management Division
- HR:** Human Resources
- PM:** Property Management





DGF PROPOSED BUDGET BY FUND	
SIKES (Habitat Stamp)	\$424,500
Trail Safety Fund	\$931,100
Game Protection	\$52,900,000
Share With Wildlife	\$250,000
Habitat Management Fund	\$500,000
Depredation	\$595,000
Big Game Enhancement	\$1,052,700
Land of Enchantment Legacy Fund	\$3,315,600

DGF ADJUSTMENTS TO BASE	
FY26 OP BUD/ BASE	\$58,258,700
Game Protection Fund Increase	\$1,516,100
Share With Wildlife Fund Increase	\$50,000
FY27 Budget Request	\$59,969,400

HIGHLIGHTS

The New Mexico Department of Wildlife is requesting a 3% increase to the Game Protection Fund in P716, P717 and P719. The increase, necessary to begin to keep pace with inflation after years of flat budgets, will be funded by the revenue from the license fee increase contained in Senate Bill 5.

P716 FIELD OPERATIONS

- The FY27 Field Operations Program Appropriation Request increased \$384.4 thousand compared to the FY26 Operating Budget.
- The Department request includes funding to continue replacing vehicles for Law Enforcement Officers in the Other Costs category.

P717 CONSERVATION SERVICES

- The FY27 Conservation Services Program Appropriation Request increased \$821.5 thousand compared to the FY26 Operating Budget.
- The increase is from the Game Protection Fund and in the Other Costs category to offset the increases due to inflation.
- Additionally, the Share with Wildlife Fund request increased \$50.0 thousand compared to the FY26 Operating Budget.

P718 DEPREDATION

- The FY27 Depredation Program Appropriation Request remains flat from the FY26 operating budget.

P719 PROGRAM SUPPORT

- The FY27 Program Support Appropriation Request increased \$310.2 thousand compared to the FY26 Operating Budget.
- The increase is in the Other Costs category to address increasing IT and overhead costs.



The Director's Office

wildlife.dgf.nm.gov

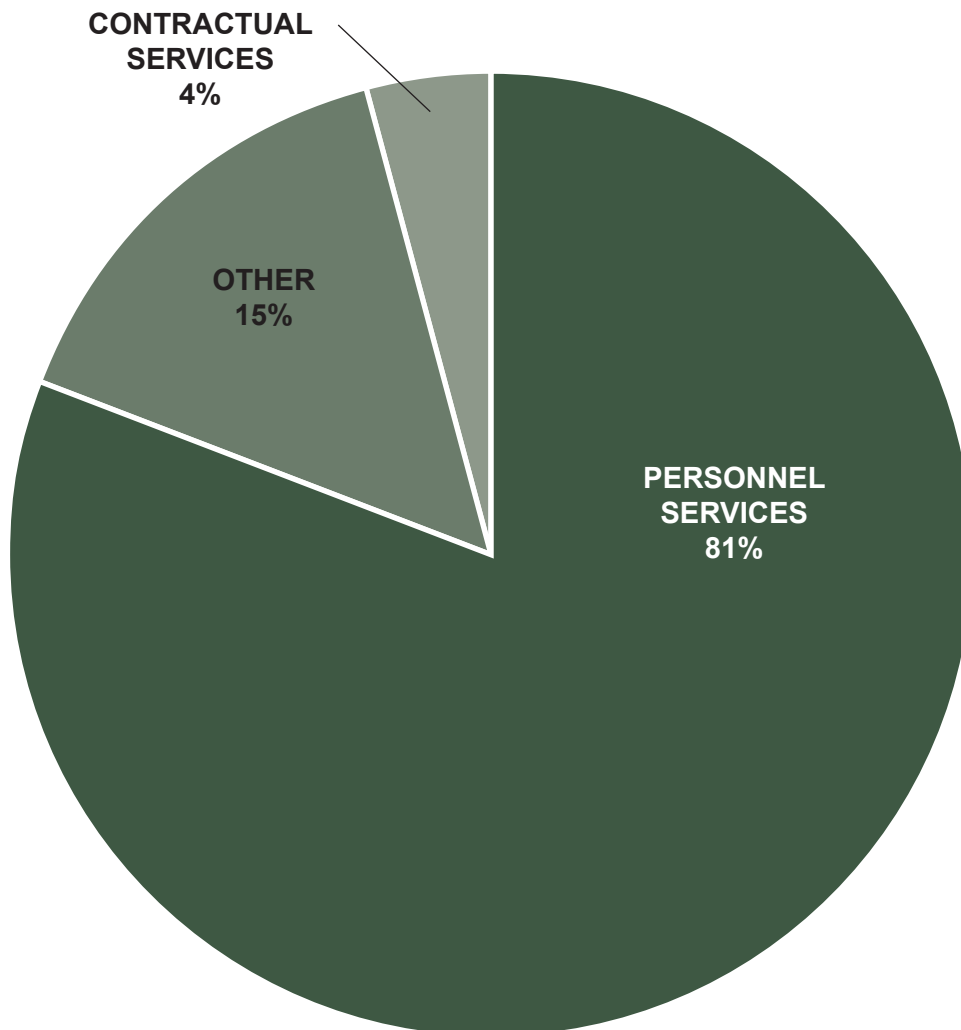
Conserving New Mexico's Wildlife for Future Generations

GAME PROTECTION FUND

Total Employees	6
Total Budget	\$1,066,000
Personnel Services	\$862,600
Contractual Services	\$43,500
Other Costs	\$160,000
Other Financing Costs	—

OVERVIEW

The Director's Office at the New Mexico Department of Game and Fish provides overall strategic direction and administration of the agency. This includes managing a large staff and a substantial budget to conserve, regulate, and protect the state's wildlife and fish resources. The Director serves as the secretary to the State Game Commission, and ensures effective communication and coordination with the executive and legislative branches of state government.



LAND OF ENCHANTMENT LEGACY FUND

- In the 2023 Regular Session of the New Mexico State Legislature, the Conservation Legacy Permanent Fund and the Land of Enchantment Legacy Fund (LOELF) were created.
- In fiscal year 2025, three hundred million dollars (\$300,000,000) was appropriated from the General Fund to the Conservation Legacy Permanent Fund.
- For fiscal year 2026, over three million dollars (\$3,315,600) was apportioned to the New Mexico Department of Wildlife to carry out projects and programs for the protection and propagation of game and fish.
- The money from the LOELF will be used to further the conservation of Species of Greatest Conservation Need (SGCN).
- LOELF funds will support expansion of the budget of the Share with Wildlife program to support research, education, and habitat projects focused on SGCN.
- LOELF funds can be used to support development of a conservation action tracker to document actions performed to benefit SGCN in New Mexico and support maintenance of the companion website for the State Wildlife Action Plan for New Mexico (SWAP).
- LOELF funds can also support gathering spatial data and developing species distribution models for SGCN to inform wildlife impact mitigation recommendations provided by the New Mexico Department of Wildlife through the New Mexico Environmental Review Tool (NMERT).
- Conduct herpetological surveys including Jemez and Sacramento Mountains salamanders, several leopard frogs (Chiricahua, lowland, plains, northern), bull frogs, Arizona toad, turtles (Big Bend slider), Gila Monster, watersnakes, and western massasauga. Data is used to monitor population trends, delineate geographic extent, develop recovery plans, inform management actions, develop survey techniques, and identify preferred habitat characteristics.
- Conduct research on the potential for YY bullfrogs to be used as a tool in controlling this invasive predator.
- Test amphibians for chytrid fungus to understand where it is present and what species are impacted.
- Conduct Chiricahua leopard frog restoration. This includes identifying suitable habitat, translocating animals, and conducting surveys to monitor existing and new populations.
- Conduct narrow-headed and Mexican garter snake surveys. Information is used to plan translocations and other restoration activities.
- Receive boreal toad tadpoles from Colorado Parks and Wildlife, release them in ponds in northern New Mexico, and monitor survival and reproduction.

LOELF OVERVIEW

Total Employees	8
Total Budget	\$3,315,600
Personnel Services	\$565,600
Contractual Services	\$1,000,000
Other Costs	\$1,750,000
Other Financing Costs	—



- Conduct small mammal surveys for species such as least shrew and AZ montane vole, and explore potential of using eDNA as a survey technique. The surveys help us identify distribution and habitat needs for these cryptic species.
- Engage in black-footed ferret recovery efforts, including identifying potential transplant locations, and working with private landowners.
- Engage in bat monitoring and survey technique development to better understand distribution, population status, and habitat needs of various bat species.
- Estimate Pacific marten density in northern New Mexico.
- Conduct Gunnison's prairie dog surveys as part of a long-term data set to understand their distribution and population trend.
- Conduct nongame bird surveys. These include general surveys on WMAs and cooperative surveys such as the Breeding Bird Survey. It also includes species-specific surveys for species such as Mexican spotted owl, willow flycatcher, yellow-billed cuckoo, curlews, double-crested cormorants, and pinyon jays. These surveys monitor species population trends, elucidate habitat needs, and identify important areas for conservation.



- Investigate Whiskered Screech Owl and other owl species occupancy and distribution in the Bootheel region using Audio Recording Units.
- Conduct research on Virginia's warbler to monitor the population and identify habitat needs. This information will be used in planning habitat improvement projects so that they benefit this species.
- Conduct fall/winter nongame bird surveys in eastern and southern New Mexico to identify important areas during this part of the lifecycle.
- Assemble and strategically deploy Motus stations to track migratory bird movement and migration timing and patterns.
- Capture and place transmitters on birds in eastern and southern New Mexico so that movement data can be recorded at the Motus stations.
- Provide support for a partner biologist in eastern NM in collaboration with Bird Conservancy of the Rockies. This position reaches out to landowners to provide information, guidance, and secure funding, for habitat restoration and wildlife-friendly ranching/agricultural practices in northeastern New Mexico.
- Conduct lesser prairie chicken population and habitat surveys and assessment. These surveys monitor trend and impacts of restoration activities on the population.
- Capture and place transmitters on lesser prairie chickens. Release some birds on site to learn more about microscale habitat selection, movement patterns, and life history traits. Transplant many of the birds to the recently acquired Pipkin Prairie Chicken Area to bolster the small population in that area.
- Participate in the Interstate Working Group and other collaborative organizations for lesser prairie chicken conservation across the species' range.
- Engage in Mexican gray wolf recovery efforts including population monitoring, cross-fostering, surveys, and density estimates. Work with private landowners to haze wolves and use other non-lethal means for protecting livestock.
- Monitor the translocated ptarmigan population in the Pecos Wilderness and identify habitat needs and limiting factors.
- Conduct playa lakes and associated grasslands restoration in eastern New Mexico. This includes filling pits, removing sediment, and channel remediation which will result in playas holding more water more often.
- Evaluate and implement habitat improvements for aquatic Species of Greatest Conservation Need (SGCN) such as Chihuahua Chub, Rio Grande Sucker, Gila trout, roundtail chub, Pecos springsnail, Alamosa springsnail, Rio Grande cutthroat trout, and others.
- Lead or participate in SGCN conservation programs and recovery teams most notably Pecos Pupfish



Conservation Team, White Sands Pupfish Conservation Team, Spikedace and Loach Minnow Recovery Team, Rio Grande Chub and Sucker Conservation Team, and Three Species (flannelmouth sucker, bluehead sucker, and roundtail chub) Conservation Team.

- Implement plans to return SGCN fishes to fire affected watersheds within the Calf Canyon/Hermits Peak, Black, and Cerro Pelado, Blue, South Fork, Salt and other fire burn scars.
- Conduct Gila trout restoration activities in Cow Creek (Gila National Forest).
- Stock Rio Grande chub and Rio Grande sucker into the Rio Costilla and other restoration areas.
- Translocate Pecos pupfish to habitats where the species has been extirpated.
- Conduct research on wetland ponds in the San Juan River basin for use as roundtail chub broodstock sources.
- Investigate flow-recruitment relationships for peppered chub in the Canadian River below Ute Lake.
- Participate in San Juan River Basin Recovery Implementation and Gila River Basin Native Fish Conservation programs.
- Monitor population expansion and genetic diversity of Gila trout in the Whitewater Creek drainage.
- Implement repatriation efforts for roundtail chub in the San Juan and Gila River basins.
- Complete over 50 surveys for fish and other aquatic SGCN.
- Continue research focused on YY brook trout evaluations and develop YY brown trout for use in native trout restoration efforts.
- Lead or participate in management and survey for aquatic invertebrate SGCN including Socorro isopod, Texas hornshell, Chupadera springsnail, Alamosa springsnail, and others.
- Develop a climate change adaptation plan for managing New Mexico aquatic resources Mexico's SGCN fishes.
- Assess habitat for Blue Sucker repatriation in the lower Pecos drainage.
- Construct wetland habitat for Razorback Sucker.
- Conduct genetic monitoring of aquatic invertebrates including Socorro Isopod, Alamosa Springsnail, and Pecos Springsnail.
- Use new genetic tools to evaluate Rio Grande Cutthroat Trout genetic diversity.





Wildlife Management Division

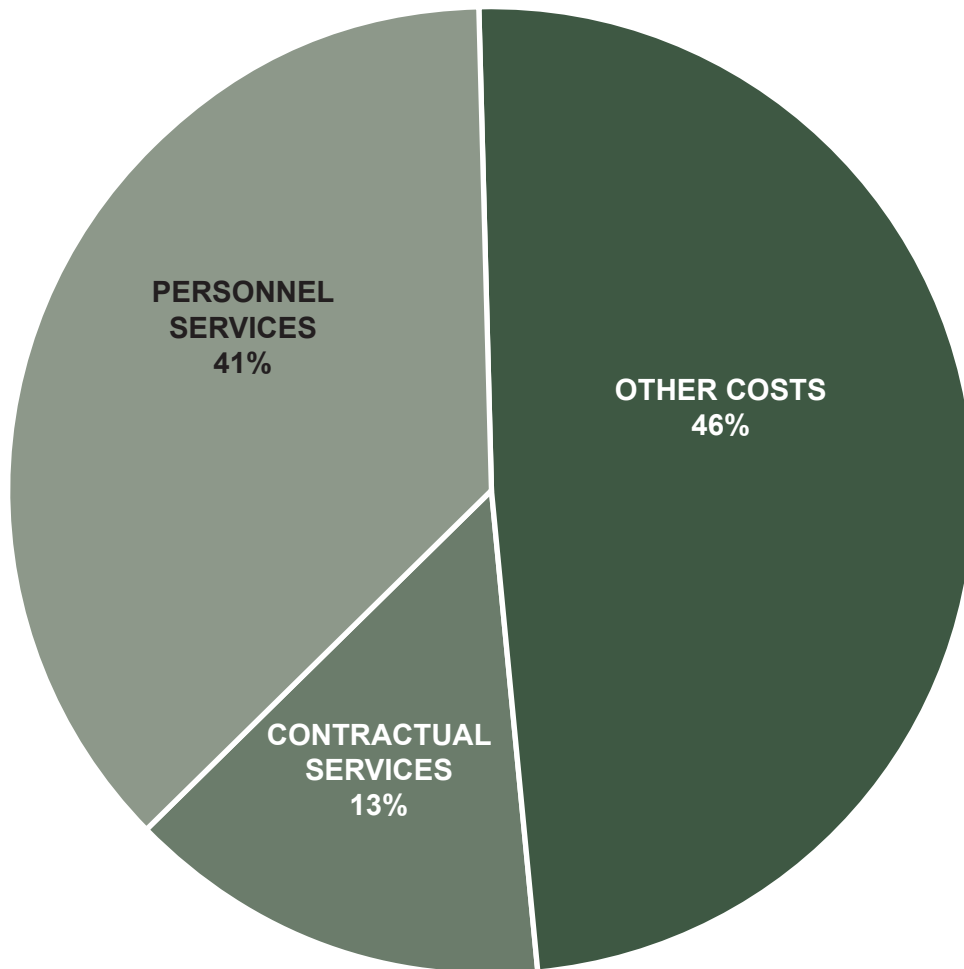
wildlife.dgf.nm.gov

Conserving New Mexico's Wildlife for Future Generations

WMD OVERVIEW (ALL FUNDS)	
Total Employees	64.5
Total Budget	\$16,047,900
Personnel Services	\$6,515,600
Contractual Services	\$2,101,300
Other Costs	\$7,431,000
Other Financing Costs	—

OVERVIEW

The Wildlife Management Division (WMD) has four Sections that oversee Wildlife Management Areas, lands, and statewide habitat restoration; wildlife research, management, and restoration; private lands and depredation, nuisance, and abatement programs; and technical guidance, planning, and donation-based conservation. In addition, the Department pays for hunter and angler access to approximately seven million acres of State Trust Lands.



GAME PROTECTION FUND – WILDLIFE MANAGEMENT DIVISION

Total Employees	58.50
Total Budget	\$12,523,200
Personnel Services	\$5,804,900
Contractual Services	\$1,044,600
Other Costs	\$5,673,700

BIG GAME ENHANCEMENT FUND

Total Employees	1.00
Total Budget	\$1,052,700
Personnel Services	\$112,700
Contractual Services	\$430,000
Other Costs	\$510,000



WILDLIFE MANAGEMENT SECTION

- Helicopter and fixed-wing airplane surveys for deer, elk, pronghorn, bighorn, oryx, ibex, and waterfowl to monitor population trends and dynamics. This is used in setting harvest limits and other aspects of the hunting seasons.
- Radio-collar cougars and place cameras in the field to estimate cougar density and habitat use in select mountain ranges in the state. Data will be used in an Integrated Population Model and in setting harvest limits.
- Use hair-snares and cameras to estimate bear density in select mountain ranges in the state. Data will be used in setting harvest limits.
- Laboratory analysis of bear and cougar teeth to determine age of hunter-harvested animals. Data is used to monitor population structure and set appropriate harvest limits.
- Trap and transplant ungulates from areas of high densities to suitable habitat that is vacant or has low numbers. Pronghorn and bighorn sheep are potential species for transplants.
- Conduct a genetic analysis of desert bighorn sheep to assist managers in strategizing which herds to use as source herds when transplanting to a given population.
- Conduct dietary studies of desert bighorn sheep to better understand if nutrition is a limiting factor.
- Create a GIS platform for recording data during surveys which will assist in data analysis.
- Maintain captive desert bighorn facility at Red Rock. This population serves as a primary source herd for desert bighorn sheep transplants to vacant or low density.
- Cooperate with NM Ranch Properties for joint management of the desert bighorn sheep herd on the 100% privately owned Fra Cristobal Mountains. This contributes to surveys, monitoring, and other.
- Provide support for the NMSU Cooperative Research Unit. These funds are used on research projects of interest to NMDGF, and for staff time for consulting on statistics and other technical issues.
- Collect biological samples from hunter-harvested cervids and test them for chronic wasting disease (CWD). This information is used in monitoring the prevalence and spread of the disease, and to inform hunters if their harvested deer or elk is positive.
- Investigate disease outbreaks to determine cause and treatment if possible.
- Participate in rule development. This includes data analysis, internal discussion, public meetings, and meeting the requirements of the rule making process.
- Participate in interagency collaboration with Bureau of Land Management, U.S. Forest Service, U.S. Fish and Wildlife Service, State Land Office, New Mexico Environmental Department, Department of Defense,



Bureau of Reclamation, New Mexico State Parks, and other agencies. Interactions include reviewing proposals and environmental assessments, developing and implementing joint research and management actions, and coordinating on-the-ground efforts.

- Participate in technical committees and attend professional meetings. These meetings provide educational opportunities for staff and allow them to engage in management on a regional or national level.
- Analyze hunter harvest data. These metrics are used to help set harvest seasons that will meet population management goals.
- Survey streams for beavers and assess beaver habitat to identify potential reintroduction sites. This will allow for non-lethal beaver control options and contribute to riparian restoration.
- Band mourning doves to estimate annual harvest and survival rates, provide information on distribution and movement, and estimate population size. This is used to monitor populations and in setting harvest regulations.
- Conduct mandatory hunter check stations in the Middle Rio Grande to ensure that we do not exceed our harvest limit of the Lesser Sandhill Crane.
- Survey upland game (quail, dusky grouse) to monitor population trends and investigate the potential of using Autonomous Recording Units to assist in surveys. These data are used to inform management including setting hunting seasons.
- Engage in Gould's turkey recovery efforts. These include trapping and transmitter birds, conducting surveys to obtain minimum, and estimated population size, GPS data analysis, assessing habitat use, distribution, nesting success and survival rates.
- Capture and transmitter turkey populations in the state to better understand life history parameters. These data will be used to inform the hunting season structure.



SHARE WITH WILDLIFE FUND

Total Employees	0
Total Budget	\$250,000
Personnel Services	—
Contractual Services	\$250,000
Other Costs	—
Other Financing Costs	—

ECOLOGICAL AND ENVIRONMENTAL PLANNING SECTION

The Ecological and Environmental Planning (EEP) Section oversees technical guidance, the review and revision of the SWAP, the Share with Wildlife program, and multiple tools to inform project environmental reviews and conservation planning, including the Biota Information System of New Mexico (BISON-M), the NMERT, the New Mexico Riparian Habitat Map (NMRipMap) and derived conservation planning data, and the New Mexico Terrestrial Habitat Map (NMHabMap).

BISON-M/Share with Wildlife

- Data from hundreds of documents are entered annually to BISON-M to update thousands of the over 7,000 species accounts. The BISON-M website was used by over 3,000 individuals since January, 2025.
- The Share with Wildlife Program funds roughly 10 projects a year with its \$250,000 budget. Projects focus on SGCN identified in the SWAP and fall under four categories: education, habitat, rehabilitation and research. New projects will be selected in June 2026 for funding beginning February 1, 2027. Typically, at least 65% of the budget goes to research projects; the remainder primarily supports education and rehabilitation projects.

Technical Guidance

- Provide representation for the New Mexico Department of Wildlife on national, regional, statewide and localized groups and state-federal collaborations including: Association of Fish and Wildlife Agencies' Wildlife Diversity Program Managers working group, South Central Climate Adaption Science Center, Interagency Climate Adaptation and Resilience Planning Team, New Mexico Wildlife Safe Passage Coalition and the Middle Rio Grande Endangered Species Collaborative Program (MRGESCP).
- Annually, hundreds of items are entered into the New Mexico Environmental Review Tool (NMERT) by technical guidance staff or project proponents. Typically, over 50 custom responses are prepared, most of which are reviewed and signed, and several hundred no effect or best practice recommendations are generated by, or emailed by staff through, the NMERT.
- Provide direction on the design, enhancement, and implementation of multiple, publicly accessible information systems and datasets, including BISON-M, the SWAP portal, the NMERT, the NMRipMap, the NMHabMap, and, in future, a conservation action tracker webmap.
- Review terrestrial habitat-related planning documents including military base Integrated Natural Resource Management Plans and associated annual reports, Recreation Area Management Plans, and Resource Management Plans; assist New Mexico Department of Transportation in implementing the Wildlife Corridors



Action Plan; review Wildfire Risk Reduction grant proposals and other terrestrial habitat-related project proposals; update and develop new project guidelines relevant to upland habitat types and species; assist Wildlife Section staff in wildlife surveys as needed. Review documents issued in the federal register that pertain to wildlife and technical guidance activities and coordinate joint responses with sister state agencies.

- Review mining and energy-related permit applications, plans, reports, and Environmental Assessments and increasing numbers of new renewable energy development projects. Conduct 20 or more site visits annually to mining and energy development project sites to inform project reviews.
- Track large transmission and energy development projects and oversee the mandated remediation for the Terrero Mine and El Molino mill sites and the testing and remediation for the Lisboa Springs Fish Hatchery.
- Lead the Congressionally mandated 10-year review and revision of the SWAP, including working with partners to develop Riparian Conservation Opportunity Areas and with the SWAP core team to share information about SWAP implementation.
- Collaborate with the USFWS on threatened, endangered, and proposed species management. This includes participating in Species Status Assessment development, recovery plan writing, commenting on proposals, and providing data to help inform listing decisions.
- Create a new SGCN branch within the Wildlife Section consisting of four new positions: a supervisor and three SGCN biologists, to carry out these projects and expand the work to implement additional projects.
- Explore the use of an infrared (FLIR) camera mounted on a fixed-wing airplane to conduct surveys.

HABITAT EVALUATION

- Provide representation for the Department on national, regional, statewide, and localized groups and state-federal collaborations including: Association of Fish and Wildlife Agencies' Wildlife Diversity Program Managers working group, South Central Climate Adaption Science Center, Climate Change Taskforce, and the Middle Rio Grande Endangered Species Collaborative Program (MRGESCP).
- Annually, over 600 items are entered into the New Mexico Environmental Review Tool (NMERT) by technical guidance staff or project proponents. Typically, over 100 custom responses are prepared, many of which are reviewed and signed, and several hundred no effect or best practice recommendations are generated by, or emailed by staff through, the NMERT.
- Provide direction on the design, enhancement, and implementation of multiple, publicly-accessible information systems and datasets, including BISON-M, the SWAP

portal, the NMERT, the New Mexico Riparian Habitat Map, and the CHAT.

- Review terrestrial habitat-related planning documents including military base Integrated Natural Resource Management Plans, Recreation Area Management Plans, and Resource Management Plans; assist New Mexico Department of Transportation in implementing the Wildlife Corridors Action Plan; review Wildfire Risk Reduction grant proposals and other terrestrial habitat-related project proposals; update and develop new project guidelines relevant to upland habitat types; assist Wildlife Section staff in wildlife surveys as needed.
- Review mining and energy related permit applications and Environmental Assessments and increasing numbers of new renewable energy development projects. Conduct 20 or more site visits annually to mining and energy development project sites to inform project reviews.
- Track large transmission and energy development projects, including the Sun Zia Transmission Line and west-wide development of solar energy on Bureau of Land Management lands, and oversee the mandated remediation for the Terrero Mine and El Molino mill sites and the testing and remediation for the Lisboa Springs Fish Hatchery.
- Lead the Congressionally-mandated 10-year review and revision of the SWAP, including working with partners to develop Riparian Conservation Opportunity Areas and conduct climate change vulnerability assessments for SGCN identified in the plan.

HABITAT MANAGEMENT AND ACCESS VALIDATION

Total Employees	—
Total Budget	\$500,000
Personnel Services	—
Contractual Services	\$150,000
Other Costs	\$350,000

SIKES FUND

Total Employees	1.00
Total Budget	\$424,500
Personnel Services	\$139,300
Contractual Services	—
Other Costs	\$285,200



HABITAT AND LANDS SECTION

Much of the work conducted by this Section is supported by the use of capital outlay funds. As of July 2025, approximately \$10 million (federal and state dollars) is earmarked for habitat restoration and WMA management projects.

Annual Operations and Maintenance Activities on Ladd S. Gordon, William S. Huey, Marquez/LBar, and Jackson Lake Wildlife Management Areas:

- Produce 900 acres of agricultural crops for wintering waterfowl and other wildlife.
- Sustain 1,250 acres of wetland habitat and four miles of riparian habitat along the Pecos River.
- Maintain irrigation and wetland infrastructure including miles of concrete irrigation ditch, two pivots, and six water wells.
- Manage infrastructure for public access and recreation including tour routes, blinds, roads, trails, signs, and information kiosks.
- Maintain 30 pieces of agricultural machinery and heavy equipment.

Wildlife Management Areas (approximately 250,000 acres throughout New Mexico separated into 97 independently managed land parcels):

- Maintain roads, signs, gates, and other public access infrastructure on WMAs across the state.
- Implement 20 miles of road maintenance on WMAs.
- Continue replacing 100s of entrance and boundary signs on WMAs to update information and standardize sign design.
- Continue to restore ecological function on Chamita and Nabor Creeks on Sargent WMA.
- Continue to plan and/or implement forest restoration and wildfire mitigation activities on Marquez/LBar, Sargent, Colin Neblett, Urraca, and Rio Chama WMAs.
- Continue to manage newly completed construction enhancements to wetland habitat and associated infrastructure on over 800 acres of wetlands on Bernardo WMA.
- Continue the removal of mesquite to improve habitat on Lesser Prairie Chicken WMAs.
- Continue to implement a statewide fence maintenance strategy for WMAs. Fence replacement/construction will include projects on Marquez/LBar, Pipkin, Red Rock and other WMAs.
- Continue to abstract water rights across State Game Commission owned WMAs.
- Support archeological surveys and clearances on upcoming ground disturbing projects. Includes tribal consultation to meet the requirements of state and federal laws.



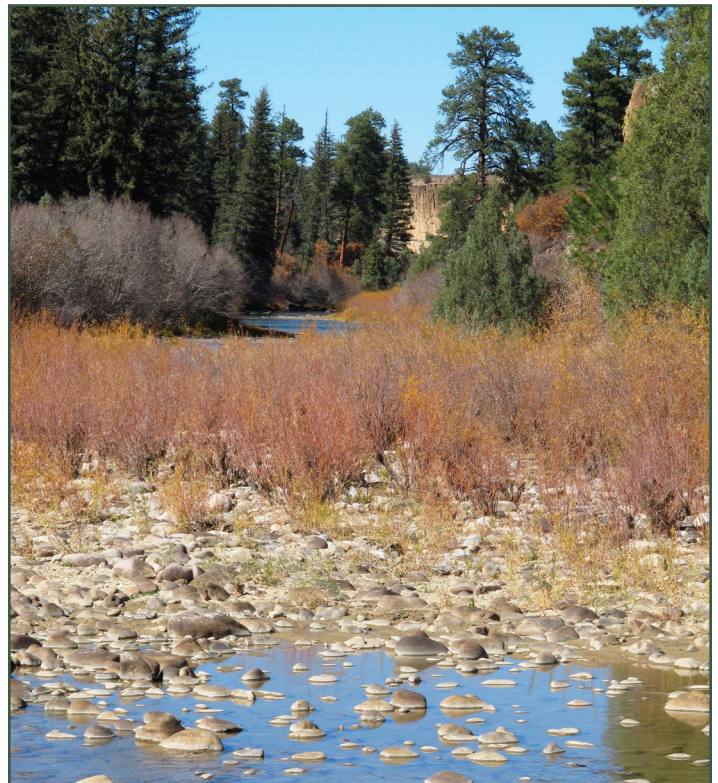
- Continue to improve roads, public access points, fences, wildlife waters, and habitat on the newly acquired LBar and Pipkin WMAs.

Support collaborative forest, shrubland/grassland, and wetland habitat restoration across tens of thousands of acres within the following active restoration landscapes:

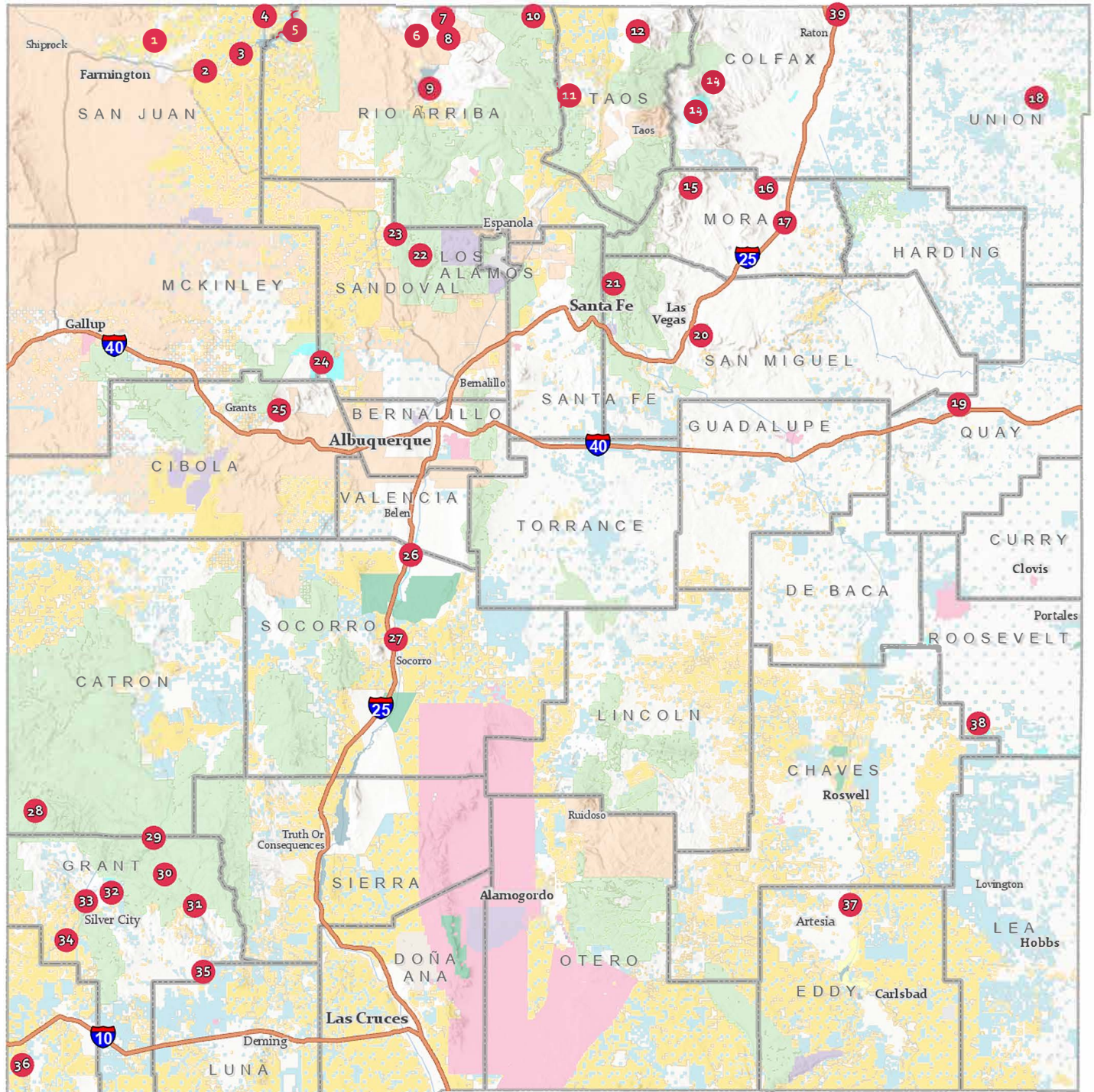
- Carson National Forest
 - » Rio Tusas, Tio Gordito, Valle Vidal Northeast, Valle Vidal, Jarita Mesa/Alamosa, El Rito Canyon
- Cibola National Forest
 - » Black Mesa, Bluewater, Baney, Thunderbird, Chato, David Canyon, Sulfer, Canadian River Corridor
- Gila National Forest
 - » Slaughter Mesa, East Centerfire, Reserve, Salt Lick, Upper Moraga, Burro, Indian Peaks, Area 74, Burro Mountain, Signal Peak, Upper Mimbres
- Lincoln National Forest
 - » Southern Sacramento Restoration Project, Jim Lewis
- Santa Fe National Forest
 - » Ojitos Mesa, Mesitas, Moya, Rio Chama, Golondrino, Blanco, Chaparral, SW Jemez, Gallinas, Pacheco, Rowe Mesa, French Mesa
- Bureau of Land Management
 - » Mesa Chivato, Mertz Ranch, El Malpais, Pelona Mountain, SW Grasslands, SE Grasslands, Taos Plateau
- Collaborate with US Forest Service, Bureau of Land Management, the Citizens Advisory Committee, and the Fisheries Management Division to implement landscape-scale terrestrial and aquatic habitat restoration as part of the Habitat Stamp Program.
- Continue to emphasize projects that restore ecological function at large spatial scales as part of the Habitat Stamp Program.

On NM State Land Office lands (associated with NMSLO/NMDGF Access Easement):

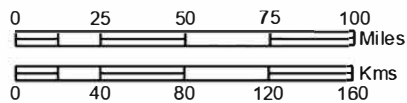
- Continue the conversion of additional sections of netwire fence to wildlife-friendly design in the Macho and Taos Plateau Landscapes to reconnect pronghorn grassland habitat.
- Continue to plan and implement collaborative forest restoration treatments on SLO landscapes including Whites Peak, Ocate, Luera Mtns, Chupadera Mesa, and Clines Corners.
- Plant thousands of additional native riparian plantings of willow, cottonwood, boxelder, and Goodding's willow on prioritized terraces within Alamita canyon to address the lack of riparian recruitment.
- Conduct playa lakes and associated grasslands restoration in eastern New Mexico. This includes filling pits, removing sediment, and channel remediation which will result in playas holding more water more often.



Wildlife Management Areas



Wildlife Management Area	National Park Service
County	Other Federal Agency
Bureau of Land Management	Private
Bureau of Reclamation	State
Dept. of Agriculture	State Game & Fish
Dept. of Defense	State Park
Dept. of Energy	Tribal
Fish & Wildlife Service	Other State Authority (University)
Forest Service	Interstate



Scale: 1:3,200,000 1 inch equals 51 miles



5/14/2025

PRIVATE LANDS, NUISANCE AND ABATEMENT SECTION

DEPREDAATION (GAME PROTECTION FUND)

Total Employees	4
Total Budget	\$701,000
Personnel Services	\$457,200
Contractual Services	\$131,700
Other Costs	\$112,100

BIG GAME DEPREDAATION FUND

Total Employees	0
Total Budget	\$595,000
Personnel Services	—
Contractual Services	\$95,000
Other Costs	\$500,000

- Manage the Open Gate Program which cooperates with landowners to provide access to hunters, anglers, and trappers by opening 32,000 acres of private land, 165,000 acres of public land, 20 miles of private shoreline, and 1,206 private surface acres for public use. In FY27, there are plans to continue to grow the number of properties participating in the program.
- Manage the E-Plus Program including coordinating with landowners, developing agreements, providing authorization statements, and conducting ranch evaluations for approximately 4,500 enrolled properties and evaluating approximately 300 properties annually.
- Maintain Geographic Information System databases, including mapping E-Plus properties, providing a public interface for unit-wide ranch maps, mapping habitat projects such as Habitat Stamp projects, and mapping wildlife location and movement data.
- Agreement with USDA Wildlife Services to remove feral hogs to prevent establishment in New Mexico.
- Assist with resolving depredation and predation issues. Provide “range-riders” in an effort to reduce wolf-livestock conflict.
- Maintain contracts for raccoon control in the Albuquerque area.
- Work with landowners to purchase wildlife fencing materials to prevent wildlife depredation on agricultural resources.
- Procure supplies for depredation and nuisance abatement including bear traps, rubber bullets, immobilization drugs and delivery systems, pepper balls, etc.



Fisheries Management Division

wildlife.dgf.nm.gov

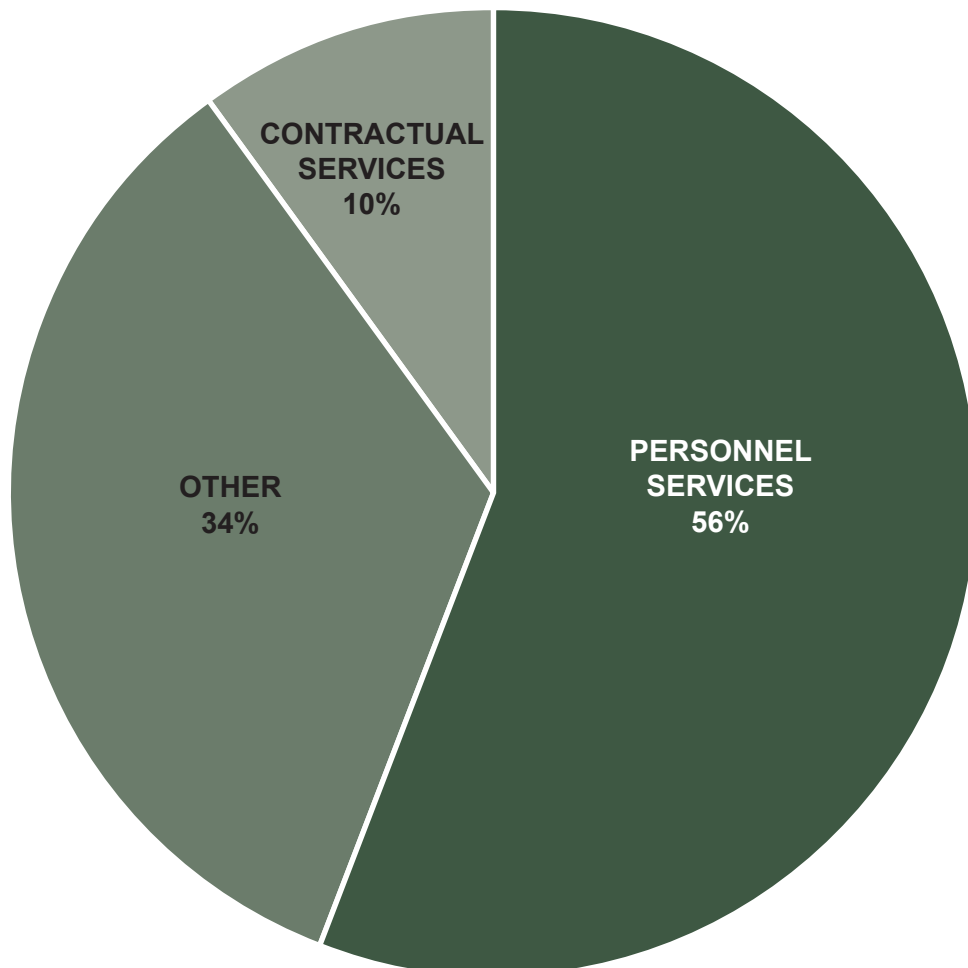
Conserving New Mexico's Wildlife for Future Generations

GAME PROTECTION FUND

Total Employees	67.5
Total Budget	\$11,434,500
Personnel Services	\$6,309,200
Contractual Services	\$1,071,500
Other Costs	\$3,871,500
Other Financing Costs	\$182,300

OVERVIEW

The Fisheries Management Division (FMD) has three sections that oversee angler satisfaction, federal grants, research and management, and hatchery operations.



RESEARCH AND MANAGEMENT SECTION

- Continue an investigation of the San Juan River tailwater trout fishery to better understand species composition, abundance, and predation.
- Stock Rio Grande cutthroat trout as part of restoration activities in Cow Creek (Pecos).
- Stock Rio Grande cutthroat trout into the Rio Costilla and other restoration areas.
- Implement plans to return sport fisheries to fire affected watersheds within the Calf Canyon/Hermits Peak, Black, and Cerro Pelado, Blue, South Fork, Salt and other fire burn scars.
- Continue research evaluating the contribution of largemouth bass stocked into New Mexico waters.
- Partner with New Mexico State University to evaluate the genetic structure of largemouth bass populations across the state, search for evidence of native bass populations, and improve our largemouth bass broodstock.
- Conduct population monitoring activities statewide for sportfish including trout, walleye, bass, catfish, and kokanee.
- Develop a climate change adaptation plan for managing New Mexico's sportfish.
- Implement research on the movement and life-history of striped bass, white bass and their hybrids in Elephant Butte and Caballo reservoirs to maximize potential angling opportunities.
- Continue to stock striped bass x white bass hybrid stocking program and expand to other waters.

AQUATIC HABITAT AND COMPLIANCE SECTION

- Coordinate habitat improvement projects on the Rio Bonito, Ponil Creek, and Fawn Lakes.
- Coordinate with New Mexico State University to support renovation of Alumni Pond.
- Complete designs for habitat and boating access improvement projects in Clayton Lake and Bear Canyon Lake.
- Design improvements to the fish barriers on El Rito and Jacks Creeks.
- Coordinate 40,000 aquatic invasive species inspections and 150 decontaminations of high-risk watercraft.
- Maintain fish health certification for six state fish hatcheries and four wild fish populations.
- Provide responses to New Mexico Environmental Review Tool (NMERT) submissions for projects with aquatic and riparian components.
- Review riparian and/or aquatic habitat-related projects and update relevant development and restoration project guidelines.
- Monitor effectiveness of aquatic and riparian habitat improvement projects compared to project objectives.



HATCHERY SECTION

- Stock 640,000 lbs. of fish from Department hatcheries.
- Maintain and operate six hatcheries.
- Maintain Rio Grande cutthroat trout, Gila trout and largemouth bass captive broodstock programs. Complete field spawning operations for walleye and kokanee.
- Purchase channel catfish, striped bass, and white bass x striped bass hybrids to expand warmwater angling opportunities.
- Plan for long-term capital improvement needs and costs estimates including replacing drinking water system, hatchery Visitors Centers, aeration buildings, replacement of infiltration galleries and pipelines, and other deferred maintenance needs.
- Maintain National Pollutant Discharge Elimination System compliance for six state fish hatcheries.
- Purchase new stocking truck(s).
- Plan updates to hatchery Visitor Centers.
- Continue improvements to hatchery housing.
- Rear and stock YY brook trout and initiate development of YY brown trout in cooperation with other western fish and wildlife agencies.
- Expand production of Gila trout for recreational and recovery stocking purposes.



INFORMATION & EDUCATION DIVISION

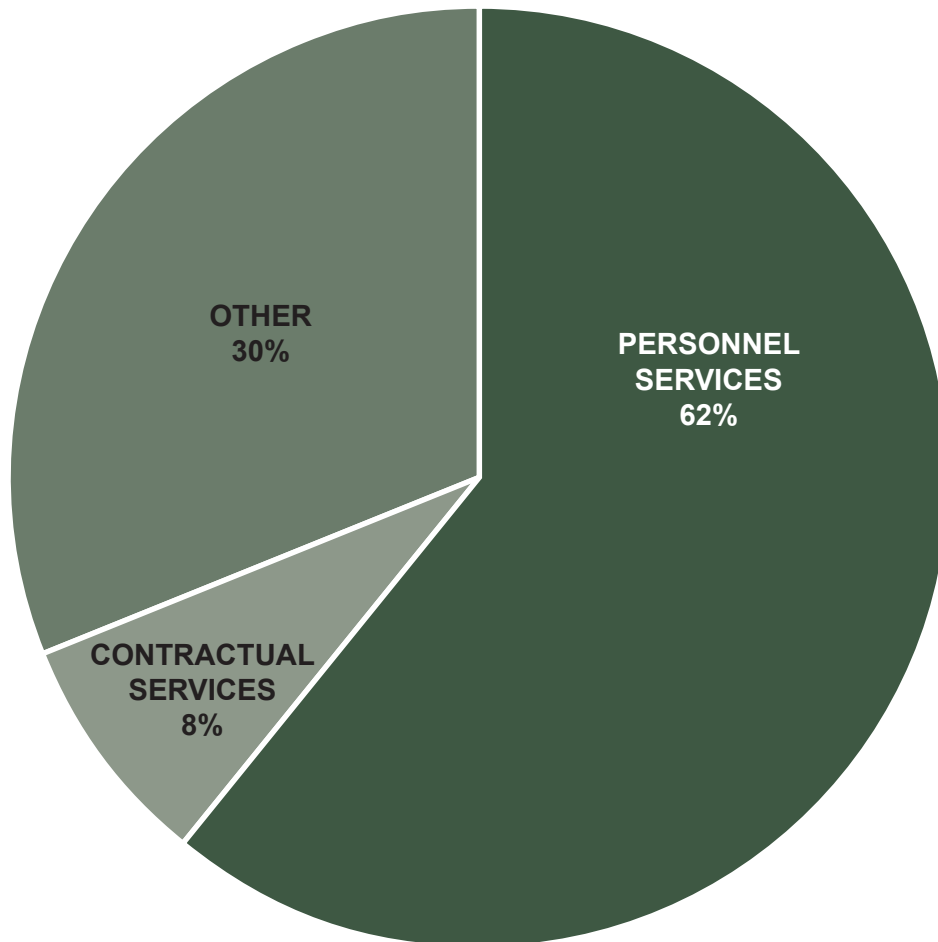
wildlife.dgf.nm.gov

Conserving New Mexico's Wildlife for Future Generations

DEPARTMENT OVERVIEW (ALL FUNDS)	
Total Employees	28
Total Budget	\$5,253,100
Personnel Services	\$3,291,200
Contractual Services	\$394,600
Other Costs	\$1,567,300
Other Financing Costs	—

OVERVIEW

The Information and Education Division (IED) has three sections that oversee the Department's marketing, advertising, media relations, Information Center and education programs. Education programs include Conservation Education, Aquatic Resource and Sport Fish Education, Hunter Education and Youth Shooting Sports programs, as well as the separately funded Off-Highway Motor Vehicle (OHV) program.



GAME PROTECTION FUND – INFORMATION AND EDUCATION

Total Employees	25
Total Budget	\$4,322,000
Personnel Services	\$2,841,500
Contractual Services	\$344,600
Other Costs	\$1,135,900
Other Financing Costs	—



INFORMATION SECTION

Publications

- Release an average of 180 press releases/public announcements annually.
- Weekly fishing and stocking reports are sent to over 150,000 subscribers.
- All Rules and Information Booklets (Hunting, Fishing and Migratory Birds) have been published in both English and Spanish since the 2022-2023 license year.
- Print publications and digital downloads/unique opens (Newsletters, Digital Magazines, Digital RIBs): more than 1,250,000 annually.

Website

- Recently migrated the website from wildlife.state.nm.us to wildlife.dgf.nm.gov while launching a new, more modern, site with extensive updates to improve ease of use and access, and work towards Section 508 compliance to improve access for visitors with disabilities.
- Main website: Over 10,000,000 pages visits annually.
- Magazine site: approximately 200,000 pages visits annually.
- Over 1,200,000 PDF downloads annually.

Social Media

- Engagement with diverse audiences on multiple platforms (Facebook, Instagram, YouTube, Nextdoor, Reddit, LinkedIn; Monitoring: X/Twitter, TikTok, Threads).
- On average, our social media pages reach more than 2.5 million people annually.
- With social media constantly changing, the Department regularly evaluates the platforms used and adjusts focus as needed.

New Mexico Wildlife Podcast

- Focuses on providing information on Department programs and projects as well as how-to and DIY information.
- Published episodes average one hour in length and vary in style to include both video podcasts and audio-only episodes.
- Listed on over 30 podcast platforms including Google Podcasts, Spotify, Apple Podcasts, Pandora, iHeartRadio, and SoundCloud.

New Mexico Wildlife E-Newsletters

- Informs constituents of Department projects, changes to rules and regulations, and provides a behind-the-scenes look at the Department and the people who work there.
- Articles and photography are largely generated in-house, and all content is published in both English and Spanish.
- E-newsletters are sent to over 300,000 subscribers.



New Mexico Fishing Challenges

- Includes the Trout Challenge, Bass Challenge, and Master Angler programs.
- The program’s objective targets 300 program entries and 150 challenge completions per year.

Information Center

- Provides phone and email assistance to the Department’s customer base.
- Assistance includes providing general information, explanation of rules and regulations, submitting draw applications and harvest reports, account updates and password resets, taking urban wildlife calls, vending licenses, and taking payments for citations and fees.
- Agents invest over 6,600 hours responding to more than 35,000 calls and additional time answering 15,000 emails annually.
- Annually vend more than 5,000 licenses; more than 1,500 tags, forms and other documents; and process roughly \$1 million in sales and payments.



EDUCATION SECTION

Hunter Education Program

- Provide instruction in the safe handling of firearms to new and existing hunters, offering a variety of learning opportunities and trainings with a focus on safety and ethics.
- Includes Hunter Education courses and camps, Bowhunter Education courses and camps, and the Mentored-Youth Hunting Program.
- Use in-person and online learning platforms, after-school programs, YouTube educational videos, youth incentive hunts for Hunter Education graduates, and skills-based training and camps.
- On average, Hunter and Bowhunter Education programs reach approximately 4,000 students annually.
- On average, the Mentored Youth Program has approximately 250 youth registered each year.



Shooting Sports Program

- Provides shooting sports opportunities, including skills-based camps and events, throughout New Mexico.
- Works to enhance existing public shooting ranges and to develop new public shooting ranges throughout the state.
- Programs reach several hundred youth and adults annually.
- Develop and host the state’s largest shooting competition, the Youth Hunter Education Challenge (YHEC), with more than 120 attendees annually. Teams compete in multiple disciplines including, shotgun, muzzleloader, .22 rifle and archery.
- Oversee the Tres Piedras Shooting Range and the Stephen M. Bush Memorial Shooting Range in Clayton.





Archery Education Program

- Strives to increase the number of safe, ethical and responsible youth archers throughout New Mexico, utilizing the National Archery in the Schools Program (NASP) and the Department's 3D Archery Program as a "next step" for NASP archers.
- NASP is an in-school, target archery program designed to introduce target archery to students in fourth to 12th grades. New Mexico has more than 300 active coaches from 130 schools and well more than 12,000 students participating annually.
- Hosts the annual NASP State Championship, Basic Archery Instructor Workshops, and provides support and guidance for league, city, and regional NASP Championships.



Aquatic Resource and Sportfish Education Program

- Increases awareness of sport-fishing resources and aquatic life in New Mexico through hands-on training in angling skills, aquatic biology, and fisheries biology.
- Provides over 90 classes to more than 20,000 youth and adults annually.
- Partners with NM Trout Unlimited in the Trout in the Classroom Program, with over 1,500 students participating annually.

Conservation Education Program

- Provides presentations, lesson plans, wildlife education trunks, coloring books, wildlife notes, and virtual resources for teachers and students.
- Over 70 wildlife presentations are given at public venues and in schools, reaching more than 10,000 people annually.
- Over 130 wildlife notes, lesson plans and how-to projects are continually updated and made available for public use.
- Wildlife education trunks are made available for staff and instructor use.



Wildlife Conservation Volunteer Program

- Oversees and manages more than 300 active Department volunteers.
- Volunteers must be certified, passing background checks and take ChildSafe training.
- Volunteers may specialize in assisting with specific Division programs such as Hunter Education, Shooting Sports, Archery Education, Fishing/Conservation Education and/or the Off-Highway Vehicle Program.

TRAIL SAFETY FUND

Total Employees	3
Total Budget	\$931,100
Personnel Services	\$449,700
Contractual Services	\$50,000
Other Costs	\$431,400
Other Financing Costs	—

OFF-HIGHWAY VEHICLE SECTION

The New Mexico Department of Wildlife's Off-Highway Vehicle (OHV) Program provides leadership in OHV recreation, implements effective and accessible safety education, coordinates and conducts statewide conservation and law enforcement efforts, and balances recreational activities with conservation and protection of New Mexico's cultural and natural resources.

There are approximately 28,000 resident OHV registrations issued by the New Mexico Motor Vehicle Division and approximately 3,500 nonresident user fee registrations issued by the New Mexico Department of Wildlife annually.

- The OHV Program administers grants from the Trail Safety Fund making approximately \$250,000 available annually. OHV-LE grants pay overtime to officers of any law enforcement agency enforcing OHV laws in the state. Non-LE grants pay entities that want to restore or maintain OHV trails, build or close OHV trails, build OHV training areas, provide OHV public outreach or training, etc.
- On average, over 6,200 hours are utilized for OHV law enforcement by about 120 law enforcement officers throughout the state annually. On average, there are over 750 OHV patrols conducted throughout the state annually.
- Provide public outreach to community events and public schools around the state, via ATV simulator displays, static OHV displays and Safety Sam/Sara animatronic robots.
- Provide hands-on OHV safety training classes to the public and state, county, and municipal agencies. OHVs and OHV safety equipment is provided for these trainings by the OHV Program.
- The OHV program maintains a fleet of 50-60 OHVs to support hands-on training; including ATVs, dirt motorcycles, and snowmobiles. This OHV fleet also supports law enforcement efforts for OHV patrols, search and rescue, etc.
- Provide OHV Act classroom trainings to any law enforcement agency who requests it. Most of these trainings are provided at the different law enforcement academies throughout the state.





Field Operations Division

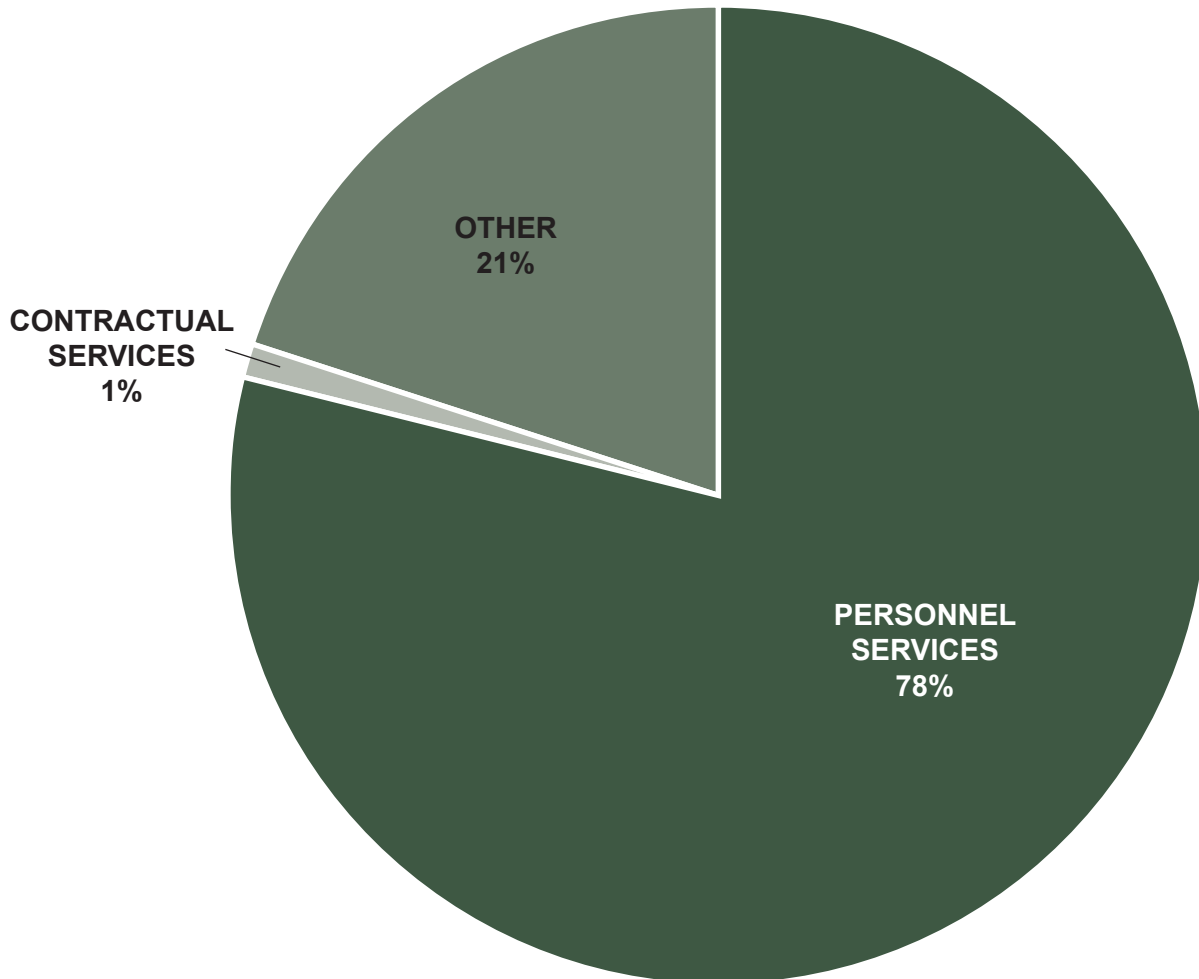
wildlife.dgf.nm.gov

Conserving New Mexico's Wildlife for Future Generations

GAME PROTECTION FUND	
Total Employees	99
Total Budget	\$13,243,800
Personnel Services	\$10,337,800
Contractual Services	\$98,700
Other Costs	\$2,807,300
Other Financing Costs	—

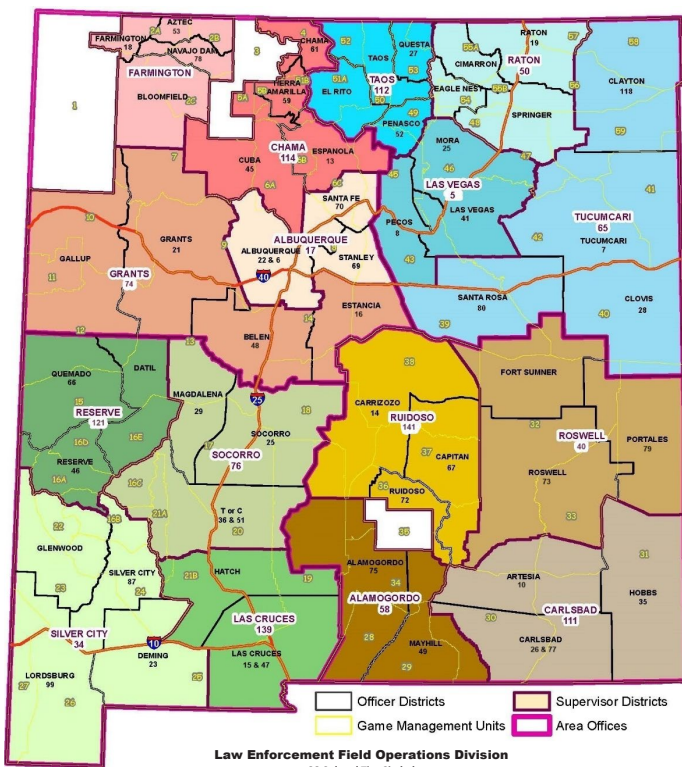
OVERVIEW

The Field Operations Division (FOD) oversees law enforcement, guides and outfitters, special permits and revocations.



GAME PROTECTION FUND – LAW ENFORCEMENT DIVISION ADMINISTRATION

Total Employees	13
Total Budget	\$4,573,600
Personnel Services	\$2,287,500
Contractual Services	\$96,000
Other Costs	\$2,190,100
Other Financing Costs	—



HEADQUARTERS

- Oversee FOD operations and FOD budget allocation.
- Manage the Operation Game Thief Program, associated funding and reward payouts.
- Encourage the Conservation Officer concept by promoting officers to work with biologists on wildlife, fisheries, and habitat projects and conduct and participate in educational events.
- Promote a professional and effective law enforcement presence across the State.
- Facilitate the Revocation Program for repeat and egregious violators.
- Recruit, hire, and train new Conservation Officers.
- Ensure required training criteria for Peace Officer certification is adhered to and met including required and advanced training.
- Coordinate with other state, federal, and local agencies to promote a team approach to wildlife law enforcement.
- Enforce the OHV laws, rules, and regulations.
- Run the day-to-day business operations of our four area offices in Roswell, Las Cruces, Albuquerque, and Raton.
- Manage and alleviate human/wildlife conflicts.
- Permit and register guides and outfitters.
- Facilitate the permitting process for wildlife rehabbers and other special permit holders throughout the State.
- Establish a wildlife law enforcement program to include special operations to deter wildlife law violators.
- Engage and interact with public communities in education and outreach classes and events.

FY25 STATISTICS:

Depredation Complaints

- Total Complaints: **358**
- Southeast Region Complaints: **58**
- Southwest Region Complaints: **78**
- Northeast Region Complaints: **74**
- Northwest Region Complaints: **148**

Outfitters and Guides

- Registered Outfitters: **281**
- Registered Guides: **1,995**

Permits

- Wildlife Rehabilitators: **10**
- Scientific and Education Permit Holders: **221**
- Game Bird Propagation: **34**
- Falconry: **90**
- Wildlife Importation: **79**

Other (Statewide)

- OHV Citations: **231**
- OHV Hours: **1,359**
- OHV Contacts: **2,510**
- Special Operations (Artificial Wildlife Operation, Roadblocks, Plain Clothes Patrols, etc.): **503**
- Education and Outreach Events (Conservation Education, Fairs, Expos, etc.): **339 event / 2,670 hours**

GAME PROTECTION FUND – SOUTHEAST AREA

Total Employees	21
Total Budget	\$2,064,000
Personnel Services	\$1,916,300
Contractual Services	—
Other Costs	\$147,700
Other Financing Costs	—

GAME PROTECTION FUND – SOUTHWEST AREA

Total Employees	21
Total Budget	\$2,393,600
Personnel Services	\$2,174,200
Contractual Services	—
Other Costs	\$219,400
Other Financing Costs	—

SOUTHEAST REGION

Law Enforcement Effort

- Total citations issued: **1,201**
- Total hours per citation: **8.19**
- Total contacts per citation: **12.97**
- Total field contacts: **15,581**
- Total hours: **9,833**
- Total search warrants: **5**
- Total arrest warrants: **13**

State Land Patrol Effort

- Total citations issued: **38**
- Total hours per citation: **4.76**
- Total contacts per citation: **3.34**
- Total field contacts: **127**
- Total hours: **181**

SOUTHWEST REGION

Law Enforcement Effort

- Total citations issued: **735**
- Total hours per citation: **18.41**
- Total contacts per citation: **22.94**
- Total field contacts: **16,863**
- Total hours: **13,531**
- Total search warrants: **3**
- Total arrest warrants: **13**

State Land Patrol Effort

- Total citations issued: **5**
- Total hours per citation: **187.4**
- Total contacts per citation: **77.8**
- Total field contacts: **389**
- Total hours: **937**



GAME PROTECTION FUND – NORTHEAST AREA

Total Employees	21
Total Budget	\$2,083,800
Personnel Services	1,937,600
Contractual Services	\$1,500
Other Costs	\$144,700
Other Financing Costs	—

GAME PROTECTION FUND – NORTHWEST AREA

Total Employees	23
Total Budget	\$2,128,800
Personnel Services	\$2,022,200
Contractual Services	\$1,200
Other Costs	\$105,400
Other Financing Costs	—

NORTHEAST REGION

Law Enforcement Effort

- Total citations issued: **958**
- Total hours per citation: **9.08**
- Total contacts per citation: **20**
- Total field contacts: **19,168**
- Total hours: **8,700**
- Total search warrants: **6**

State Land Patrol Effort

- Total citations issued: **19**
- Total hours per citation: **50.52**
- Total contacts per citation: **39.49**
- Total field contacts: **749**
- Total hours: **960**

NORTHWEST REGION

Law Enforcement Effort

- Total citations issued: **1,573**
- Total hours per citation: **9.38**
- Total contacts per citation: **17.12**
- Total field contacts: **26,924**
- Total hours: **14,758**
- Total search warrants: **3**
- Total arrest warrants: **24**

State Land Patrol Effort

- Total citations issued: **54**
- Total hours per citation: **6.19**
- Total contacts per citation: **4.83**
- Total field contacts: **261**
- Total hours: **334**





Information Services Division

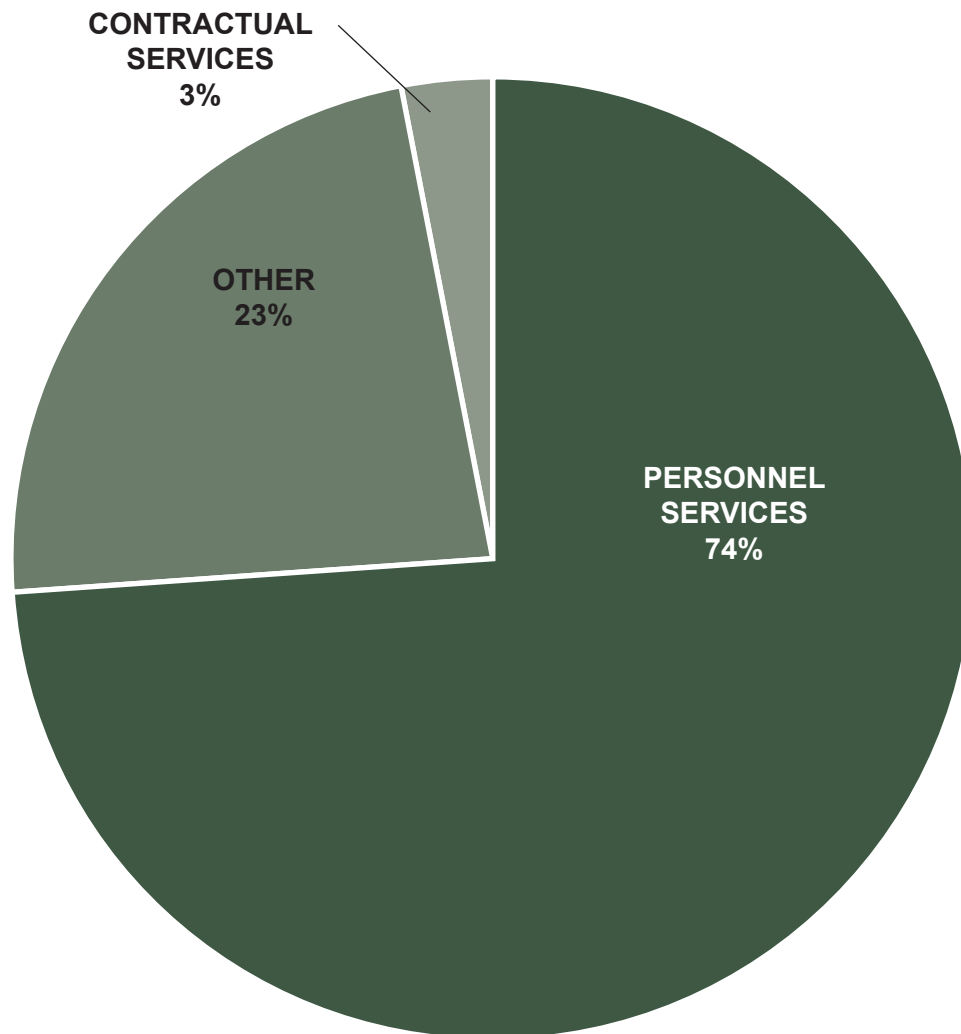
wildlife.dgf.nm.gov

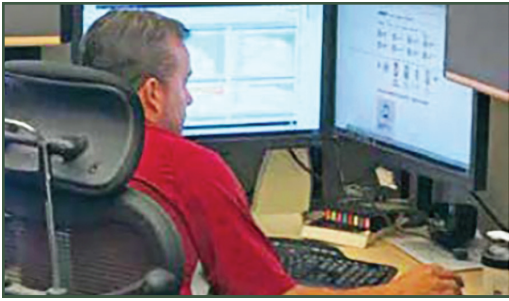
Conserving New Mexico's Wildlife for Future Generations

OVERVIEW

The Information Services Division develops and maintains the mission critical applications for the agency which include the online sales, and the vendor sales applications. The Division handles the day-to-day end point support which includes workstations and mobile devices. Security and Payment Card Industry (PCI) compliance is maintained by the Department Information Security Officer who also develops and maintains IT centric policies and procedures.

GAME PROTECTION FUND	
Total Employees	16
Total Budget	\$3,075,400
Personnel Services	\$2,291,300
Contractual Services	\$80,000
Other Costs	\$704,100
Other Financing Costs	—





Administrative Services Division

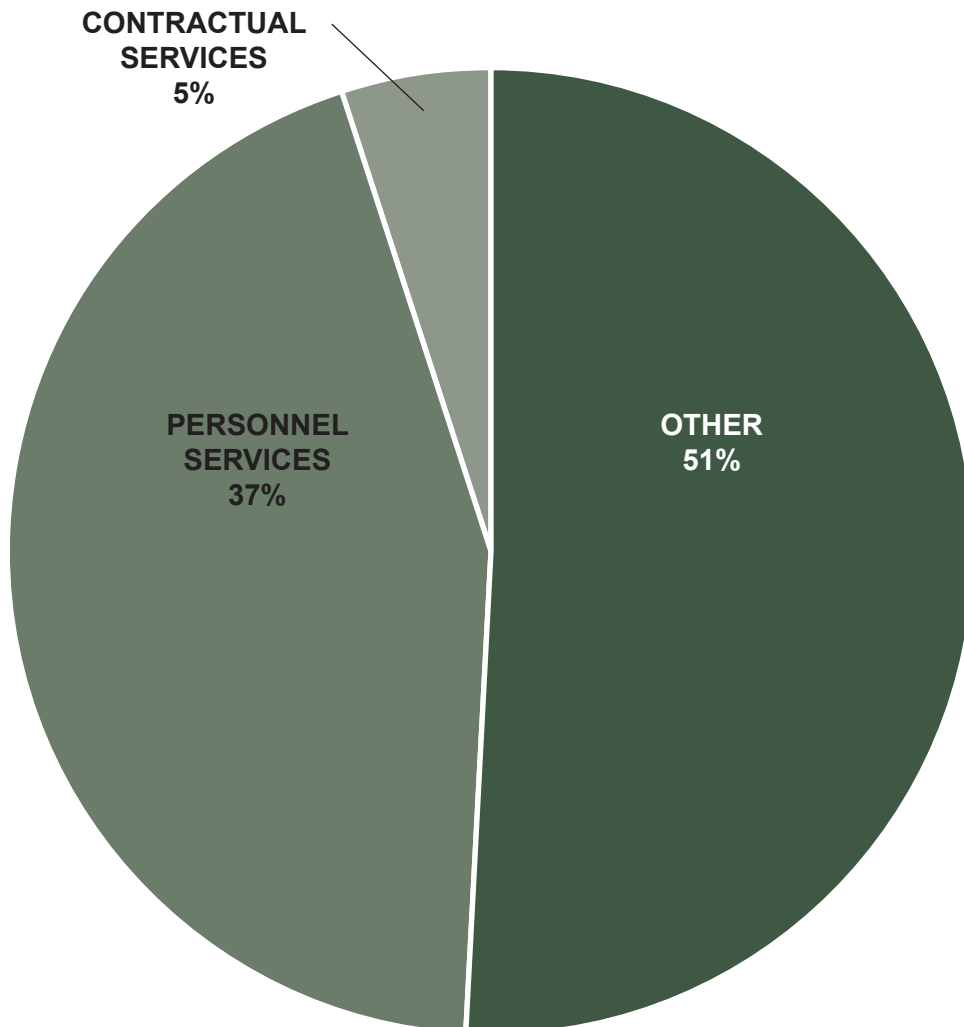
wildlife.dgf.nm.gov

Conserving New Mexico's Wildlife for Future Generations

OVERVIEW

The Administrative Services Division (ASD) manages all financial operations, facilities, including accounts payable, procurement, budget, licensing operations, federal aid and property management (PM).

DEPARTMENT OVERVIEW (GAME PROTECTION FUND)	
Total Employees	27
Total Budget	\$6,077,800
Personnel Services	\$2,714,300
Contractual Services	\$288,500
Other Costs	\$3,075,000
Other Financing Costs	—



**GAME PROTECTION FUND –
ADMINISTRATIVE SERVICES DIVISION**

Total Employees	22
Total Budget	\$5,190,800
Personnel Services	\$2,294,300
Contractual Services	\$238,500
Other Costs	\$2,658,000
Other Financing Costs	—

**GAME PROTECTION FUND –
PROPERTY MANAGEMENT**

Total Employees	5
Total Budget	\$887,000
Personnel Services	\$420,000
Contractual Services	\$50,000
Other Costs	\$417,000
Other Financing Costs	—

- The Budget Section (three FTE) currently manages \$58.2 million in FY26. The FY27 request is \$59.8 million contingent on legislative approval. The Budget Section manages and completes the annual audit.
- The Federal Aid Section (three FTE) collects approximately \$20.9 million annually in federal revenue from all Department funds and manages approximately 60 federal grants. The total amount of active grants is \$24.3 million.
- The Licensing Section (six FTE) assists with serving approximately 124,821 customers and 292,679 applicants and is integral in generating revenue for the Department. The Licensing Section manages all sales of hunting and fishing licenses through its online licensing system, area offices and approximately 140 participating vendors.
- The Procurement Section (four FTE) processes and manages millions of dollars in contracts for the Department that include large RFP's for engineering, professional services contracts, and all procurement regulations.
- The Accounts Payable Section (five FTE) reviews and processes all payments for the Department that include approximately 10,500 vouchers per year.
- The Facilities Section (five FTE) manages the maintenance and repairs of three Department-owned area offices, 11 dams across the State, and numerous other Department owned properties. The Information Systems Division (ISD) manages and maintains the Department's information technology assets. This is done via three sections, Applications, Operations and Security.



Human Resources Division

wildlife.dgf.nm.gov

Conserving New Mexico's Wildlife for Future Generations

GAME PROTECTION FUND – HUMAN RESOURCES

Total Employees	4
Total Budget	\$454,600
Personnel Services	\$454,600
Contractual Services	—
Other Costs	—
Other Financing Costs	—

OVERVIEW

The Human Resources Bureau (4 FTE) provides comprehensive human resources services to 320 Full-Time employees, including but not limited to talent acquisition, employee relations, compensation and benefits administration, performance management, and professional development. With a focus on ensuring fair and equitable practices, promoting employee well-being, and upholding the highest standards of integrity and service, the Human Resources Bureau is committed to recruiting, developing, and retaining outstanding team members who share a passion for wildlife, conservation, and public service, which are essential to our agency's mission.

