

CONSERVING NEW MEXICO'S WILDLIFE SINCE 1903

NEW MEXICO



WILDLIFE



Pronghorn Rule 19.31.15 NMAC



March 20, 2026
New Mexico State Game Commission Meeting



New Mexico Pronghorn Population

- Population growth driven by female and fawn survival
 - Populations impacted by long-term drought
- Buck harvest no limiting to population growth
- Statewide average: 29 bucks:100 does: 29 fawns
 - Buck ratio adequate for recreational opportunities



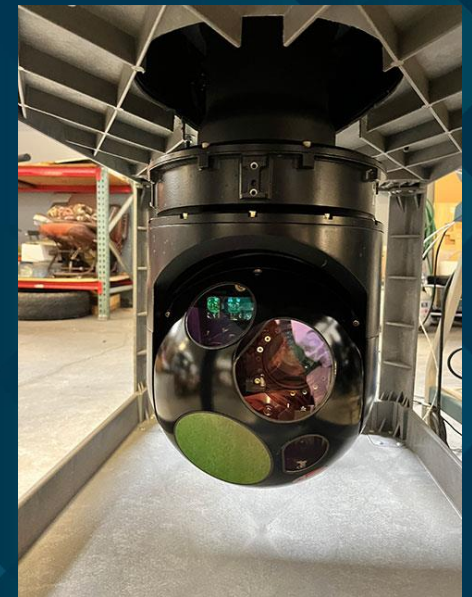
New Mexico Pronghorn Population

- **Pronghorn exhibit quick growth**
 - Males can achieve max horn size by ~3 years
 - Females have high pregnancy rates by 1.5 years
 - Twin fawns: results in quicker population rebounds under favorable conditions
- **Male harvest**
 - Can harvest at higher rates than other ungulates & maintain high trophy quality (Tafelmeyer et al. 2024)
 - Does not impact populations unless B:D ratios decline enough to impact female pregnancy rate



Pronghorn Surveys: Advancing Our Methods

- Conducted across key ranges
- 11 years of data informing pop. trends & management decisions
- New thermal camera integration
 - Expected to significantly improve detection
- Continued refinement of methods moving forward



Northeast Pronghorn Population

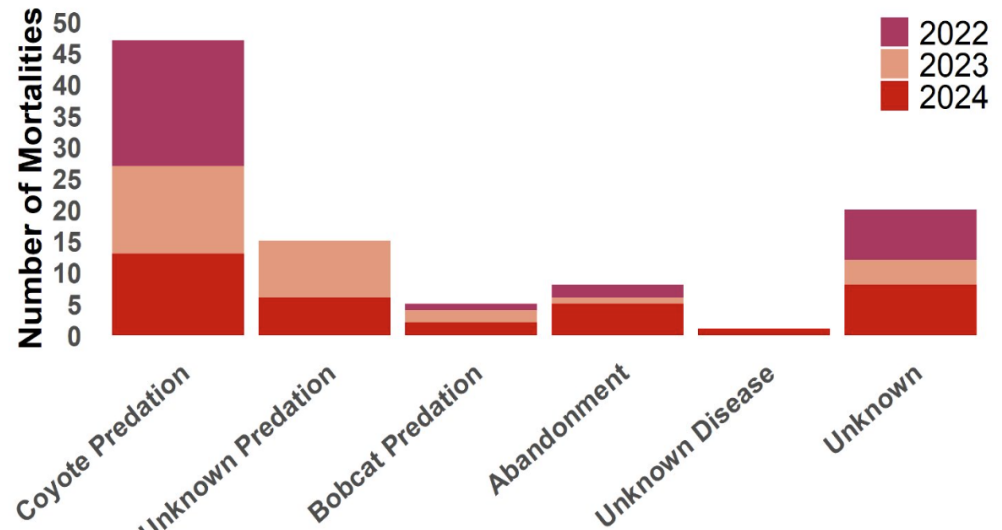
- **Northeast**
 - Long-term drought & adult female senescence likely driving population decline
 - Buck numbers have remained >20:100
 - Department eliminated F/IM hunts, decreased MB tags by 20% and implemented a cap on private land tags to 80% of average license sales.



Pronghorn in Oklahoma

- Oklahoma pronghorn study (OSU)
 - Adult female survival: 78% (82% excluding hunting)
 - Adult male survival: 74% (87% excluding hunting)
 - Fawn survival: 2022 (11%), 2023 (12%)

Fawn: Cause of Death



Rickels et al. 2024



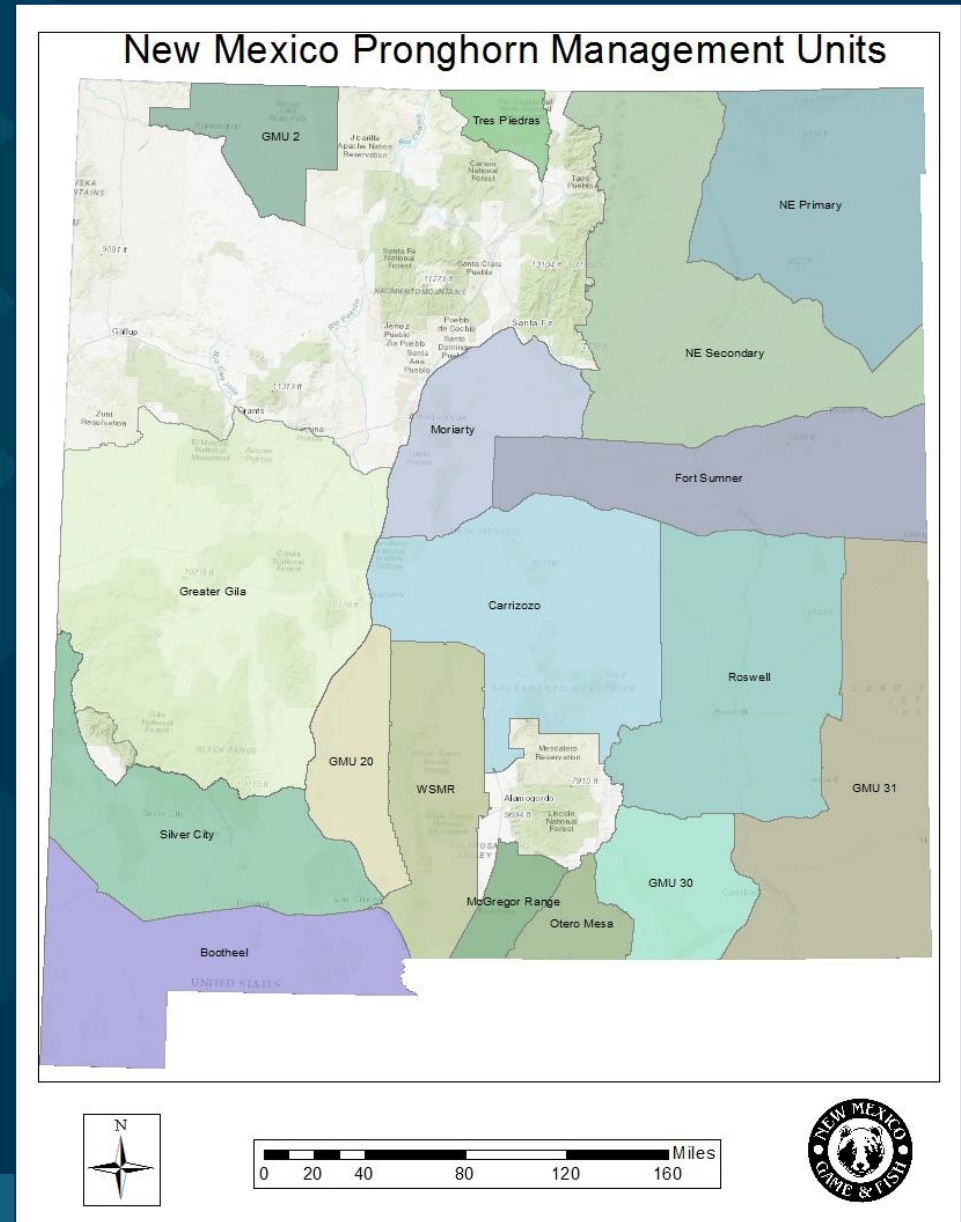
Pronghorn harvest 2024 & 2025

- **Number of licenses sold:**
 - 2024: 6,429
 - 2025: 5,610
- **Estimated harvest:**
 - 2024: 4,176 males, 147 females
 - 2025: 3,488 males, 75 females*
- **Satisfaction:**
 - 2024: 3.9
 - 2025: 3.8
- **Average days hunted: 2.2 (2024 & 2025)**



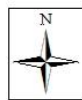
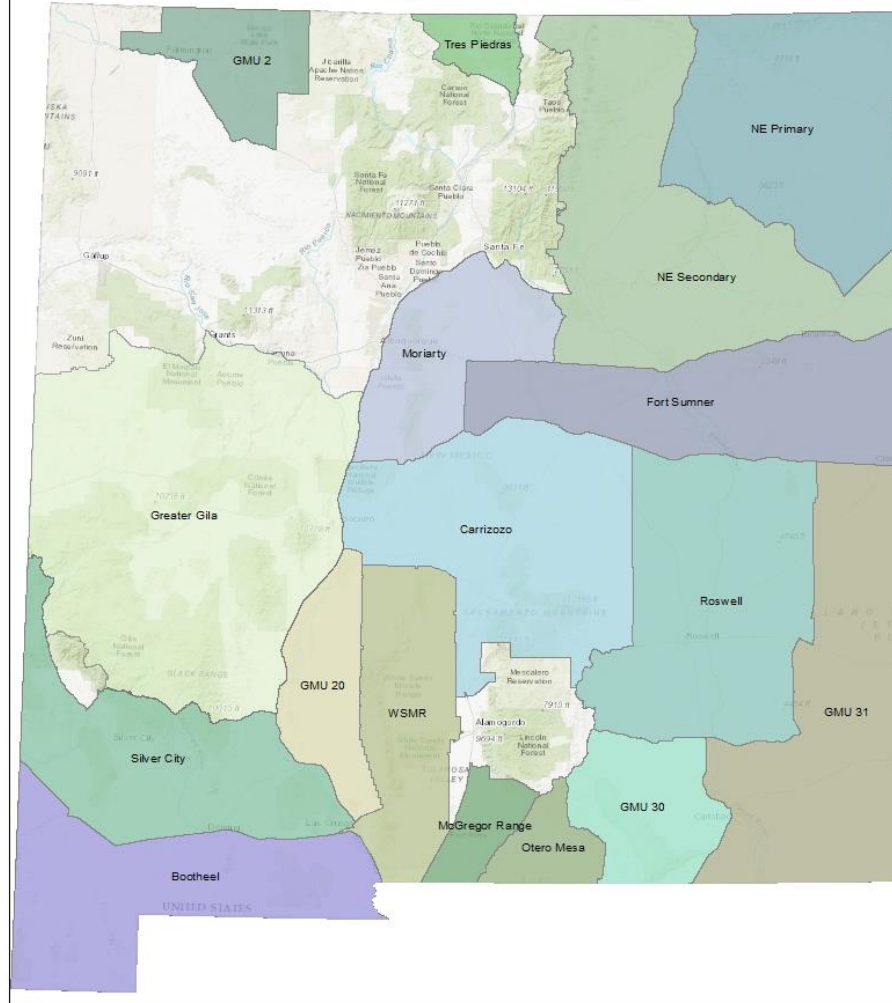
Pronghorn biology: NE Area

- Population status: recently decreasing (currently stabilizing)
- 2025 data
 - Primary; 27 bucks: 100 does: 37 fawns
 - Secondary; 44:100:42



SE Area

New Mexico Pronghorn Management Units



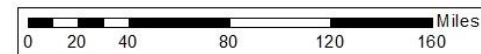
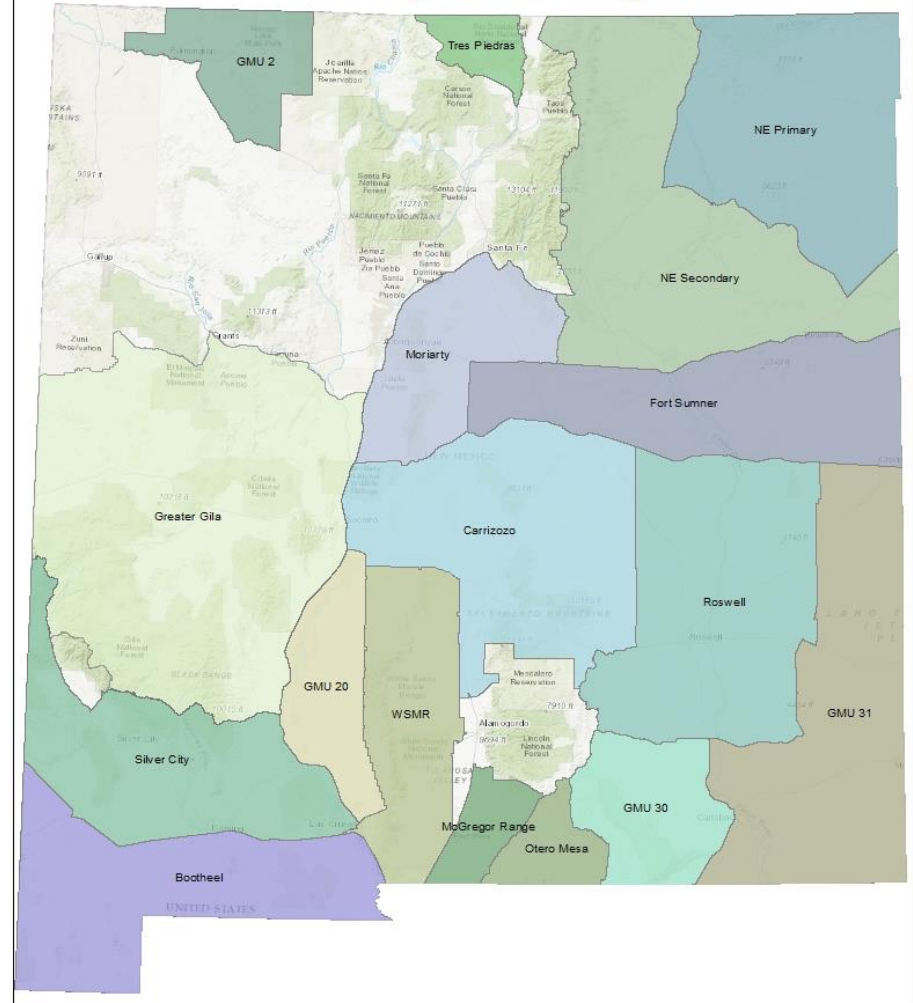
Pronghorn biology: SE Area

- Population status: stable
- Average 32B: 100D: 33F
- Conducting fence modifications
- GPS collars deployed to identify barriers to movement
 - Guide fence modifications



SW Area

New Mexico Pronghorn Management Units



Pronghorn biology: SW Area

- Population status: low but stable
- Average 37B: 100D: 31F
- GPS collars deployed in cooperation with BLM to identify barriers and quantify breeding & fawning periods



Pronghorn biology: SW Area

- **2024**
 - Fawning: Jul. 16
(range=Jul. 1-Aug. 11)
 - Survival: 0.35 (CI=0.17-0.56)
- **2025:**
 - Fawning: Aug. 1
(range=Jul.17-Aug. 15)
 - Survival: 0.06 (CI=0.01-0.30)

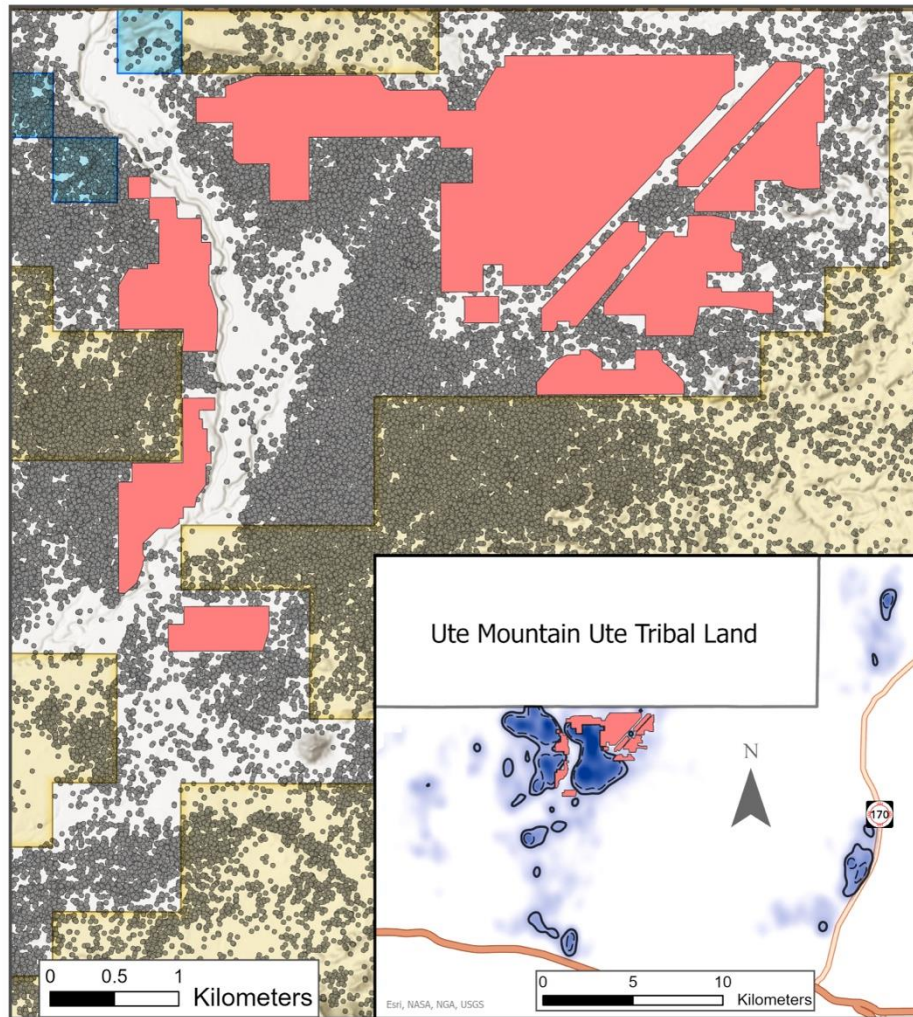


Pronghorn biology: NW Area

- Population status: low but stable
- L-bar pronghorn movement and fence modification
- San Juan Solar field study



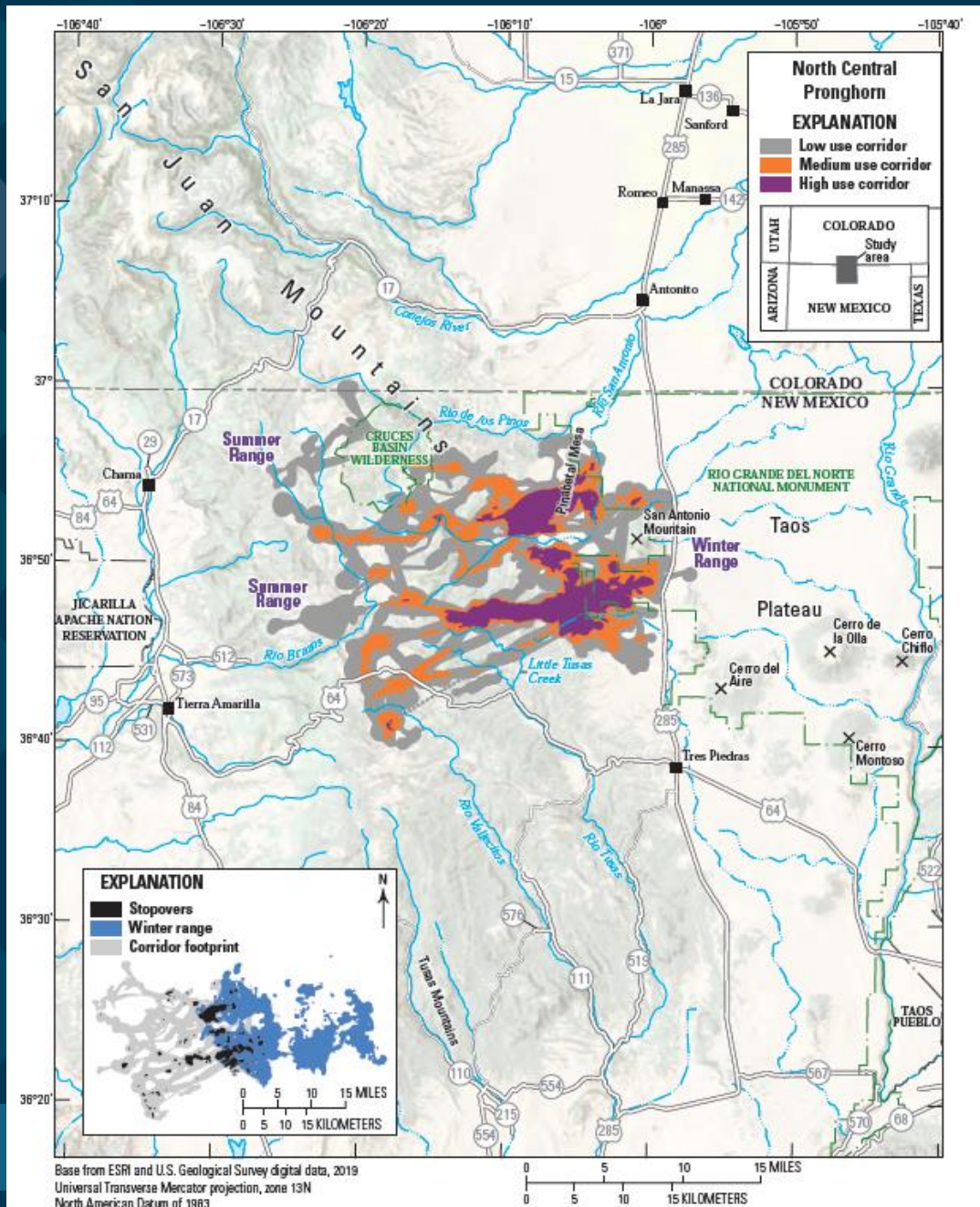
- Study initiated on solar field development



- San Juan Solar Facility
- BLM
- State
- GPS Location
- 50% Contour
- 30% Contour
- Pronghorn Space Use
- Lower
- Higher



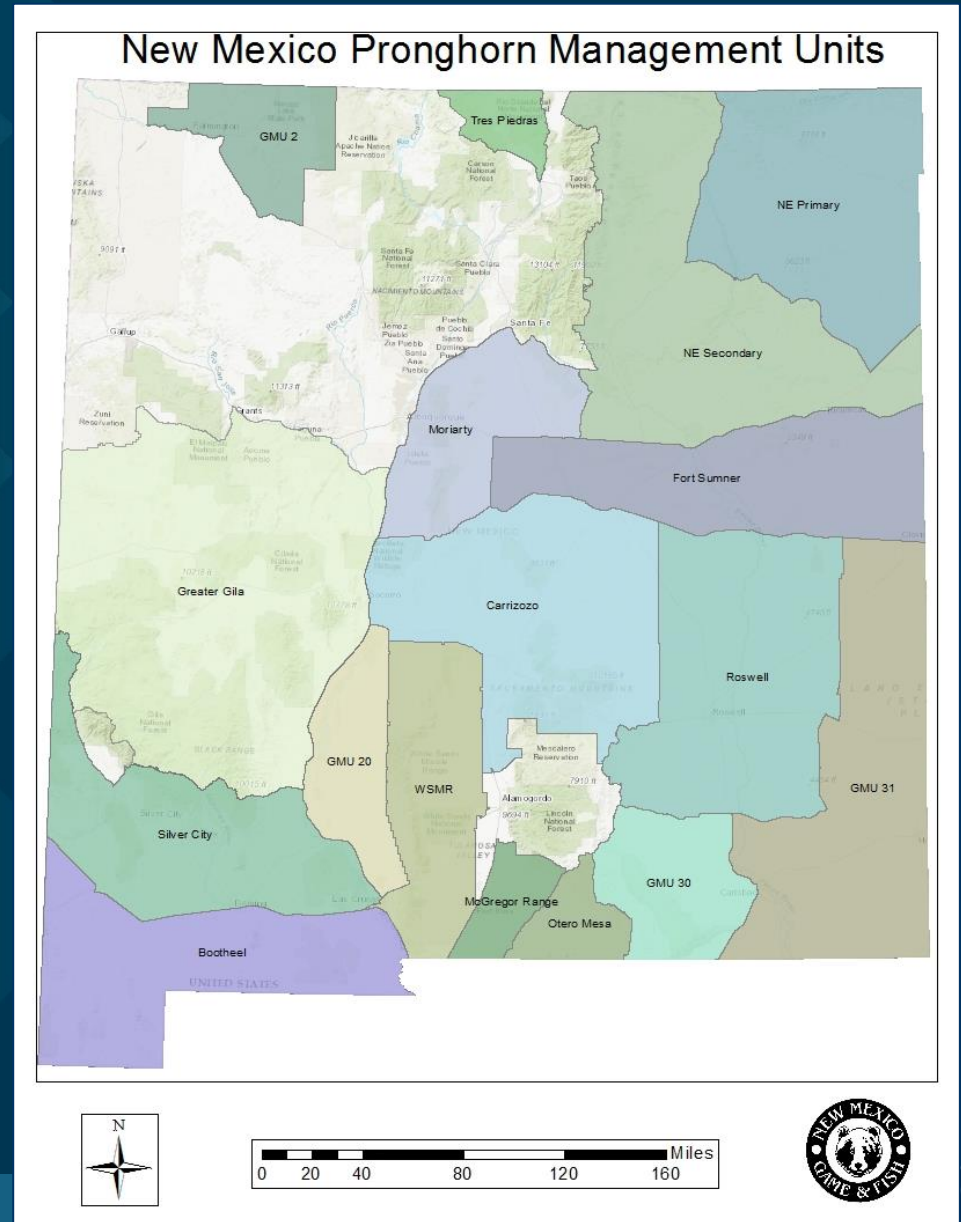
Tres Piedras

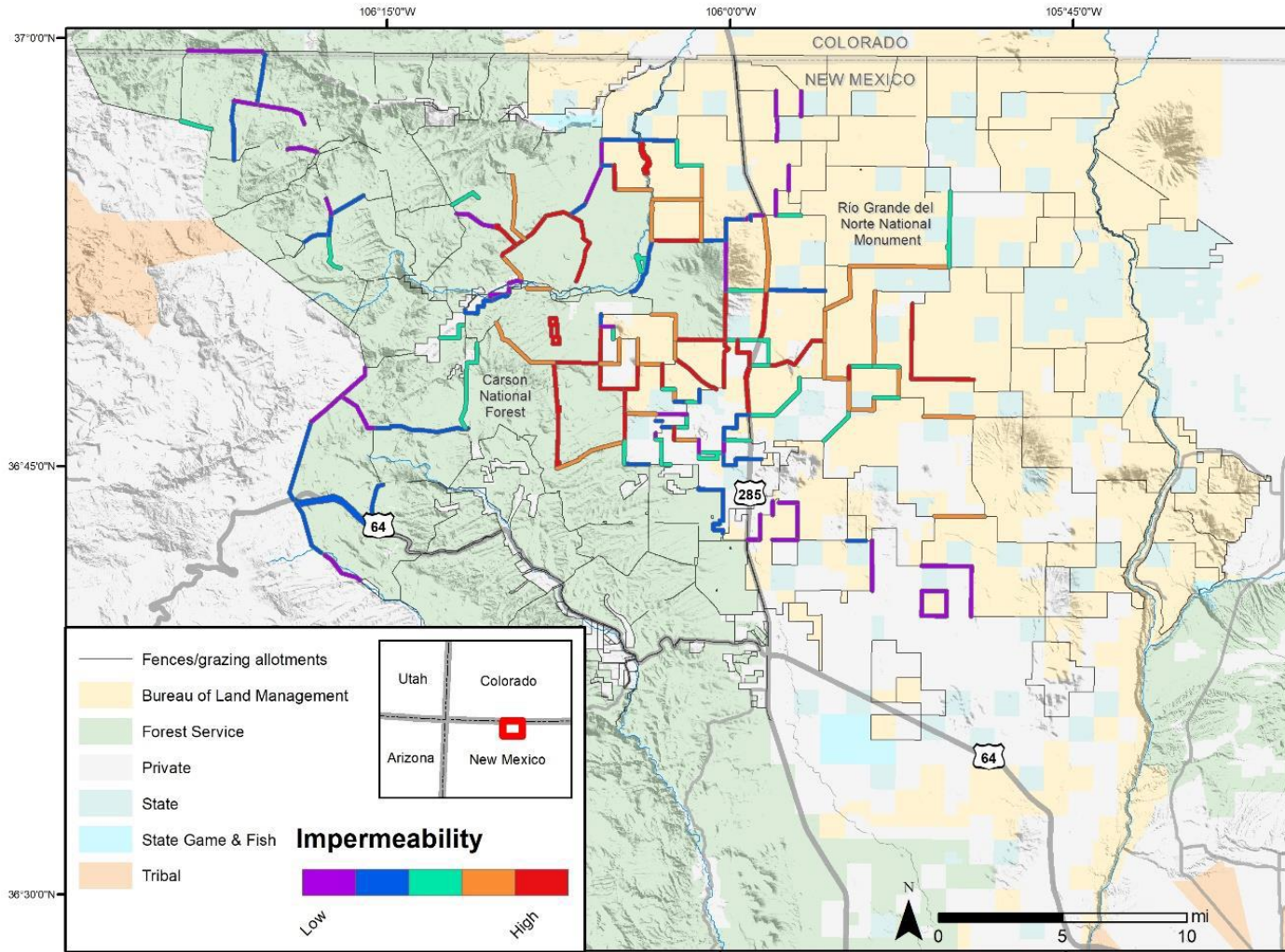


Pronghorn biology: Tres Piedras

- Population status: stable
- Average 35B: 100D: 22F
- Migratory herd

	2016	2017	2018	2019	2020	2021	2022
Bucks	21	38			50		32
Fawns	41	22			12		14





Pronghorn recommendations

- **Require purchase of a license a day prior to start of hunt**
- **Evaluate potential ranch registration process for private hunts**
- **Consider cap on private land OTC licenses**
- **Shift GMU 4/50/52 rifle hunt to a muzzleloader hunt**
- **Adjust licenses numbers based on biological data, management goals, & public comment**
- **Adjust season dates**
- **Adjust season dates in SW later to address later breeding/fawning**
- **Work with military on hunts that occur on DOD lands**



Public Outreach

- **Held 2 hybrid virtual/in-person public meetings (ABQ, Las Cruces)**
 - 40 people in attendance
- **Public comment summary (16 written comments so far)**
 - Support for capping OTC private land licenses
 - Public hunter frustration with private land license system
 - Support for ranch registration process



DGF-Pronghorn-Rule@dgf.nm.gov



NEW MEXICO DEPARTMENT OF WILDLIFE

