

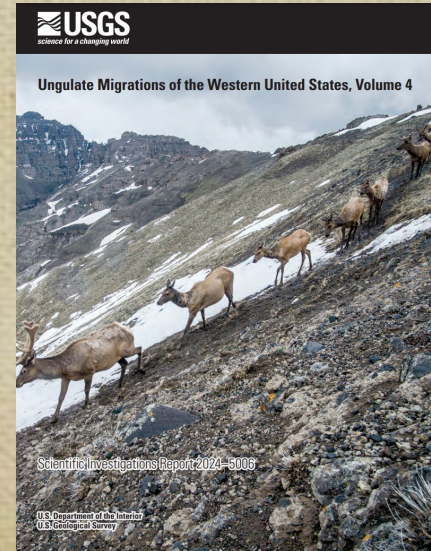
# Update: Big Game Corridors

Stewart Liley  
Santa Fe, NM  
January 10, 2025



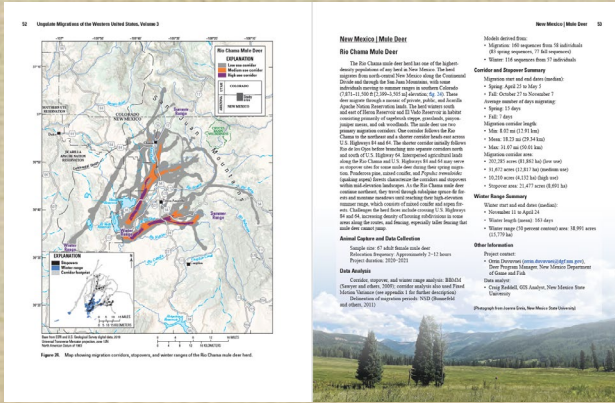
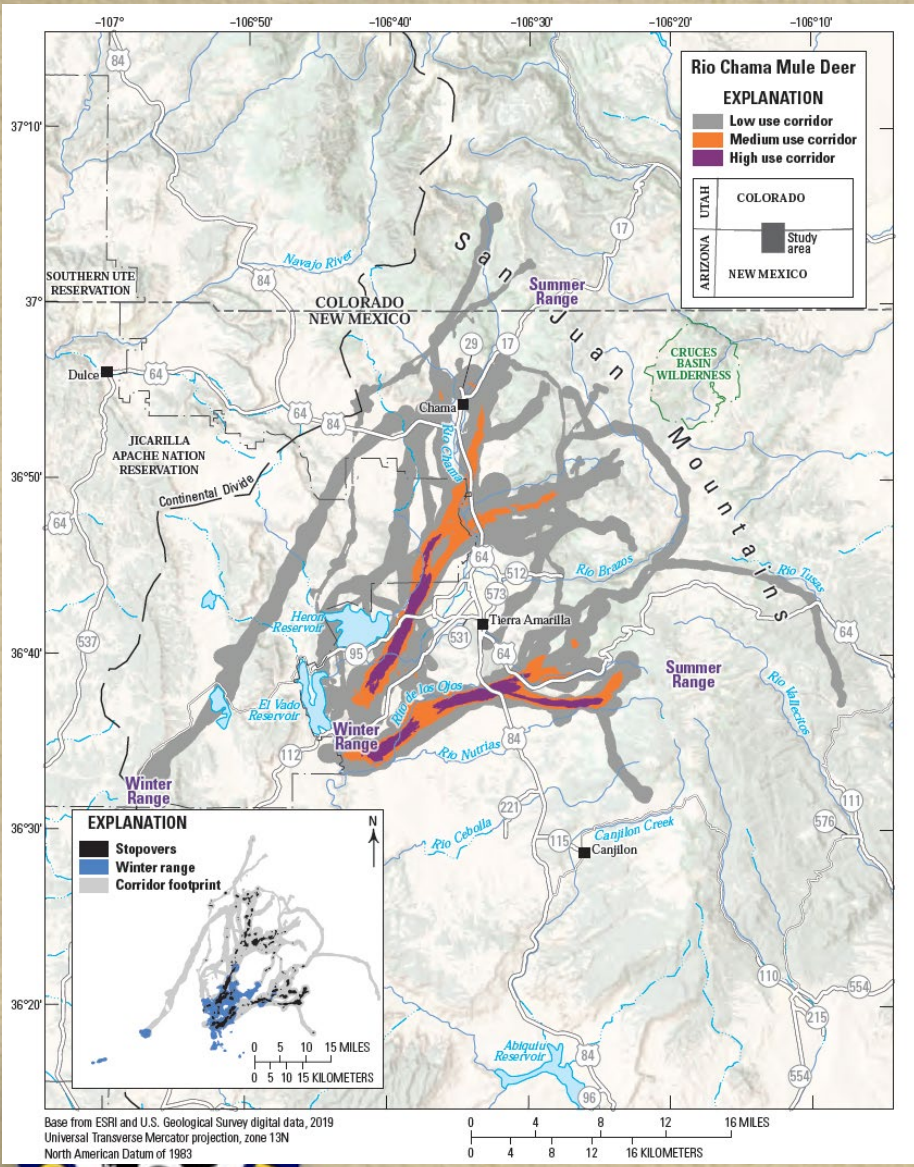
# Big Game Migration Projects

- **18 herds mapped and published**
  - Volumes 2, 3, 4 of: *Ungulate Migrations of the Western US* (USGS report)
  - Collaborative effort
    - WEST (consulting for BLM projects), Navajo Nation, Santa Ana Pueblo, NMSU/USGS, Tesuque Pueblo
  - Herds mapped
    - Mule deer: 10
    - Elk: 7
    - Pronghorn: 1



# Rio Chama (mule deer)

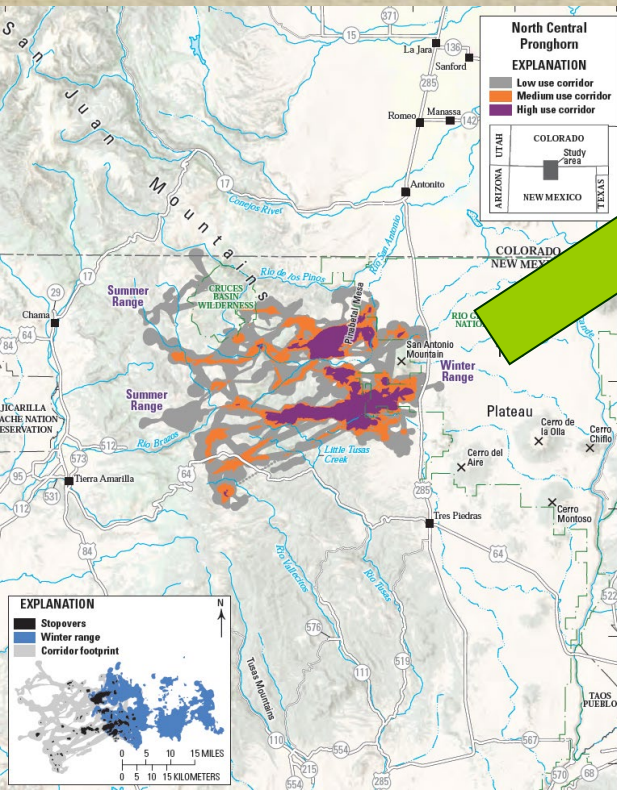
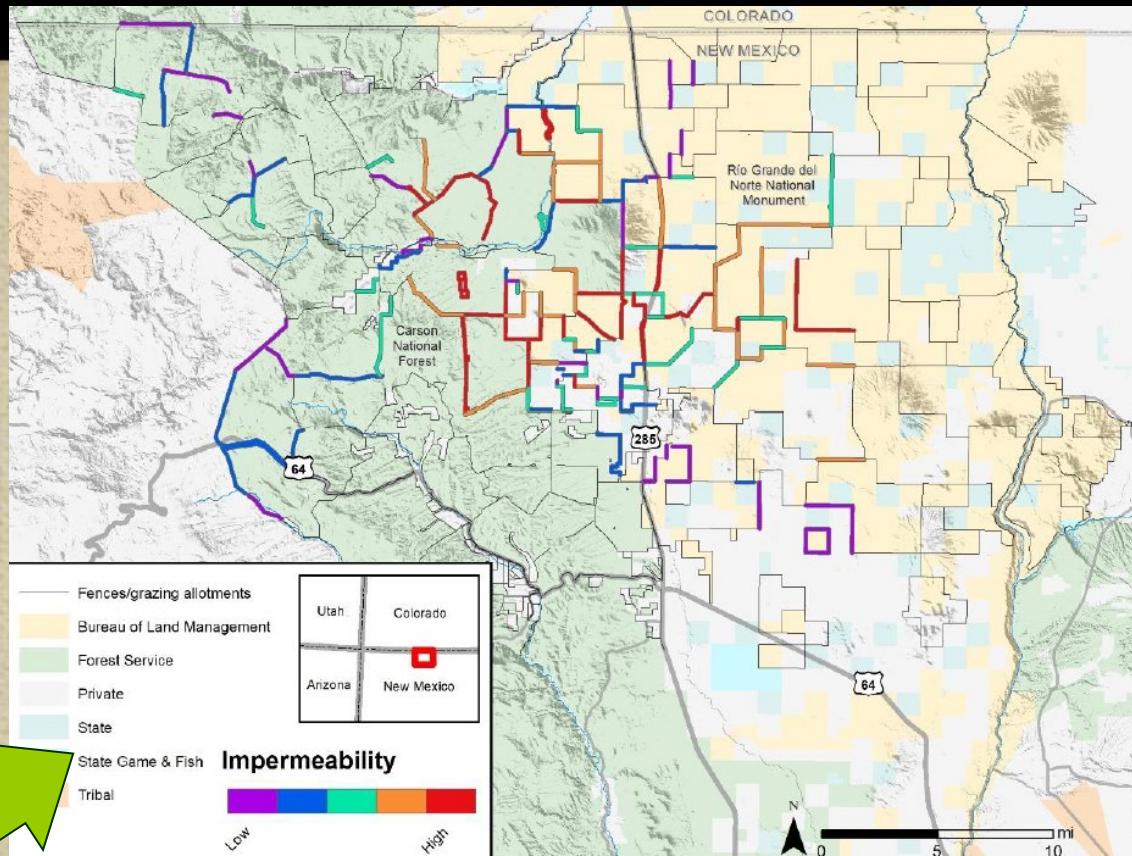
- Reported data
  - Migration pathway (timing, length)
  - Possible barriers
  - Stopover timing
  - Winter range summary



S. Liley, January 10, 2025

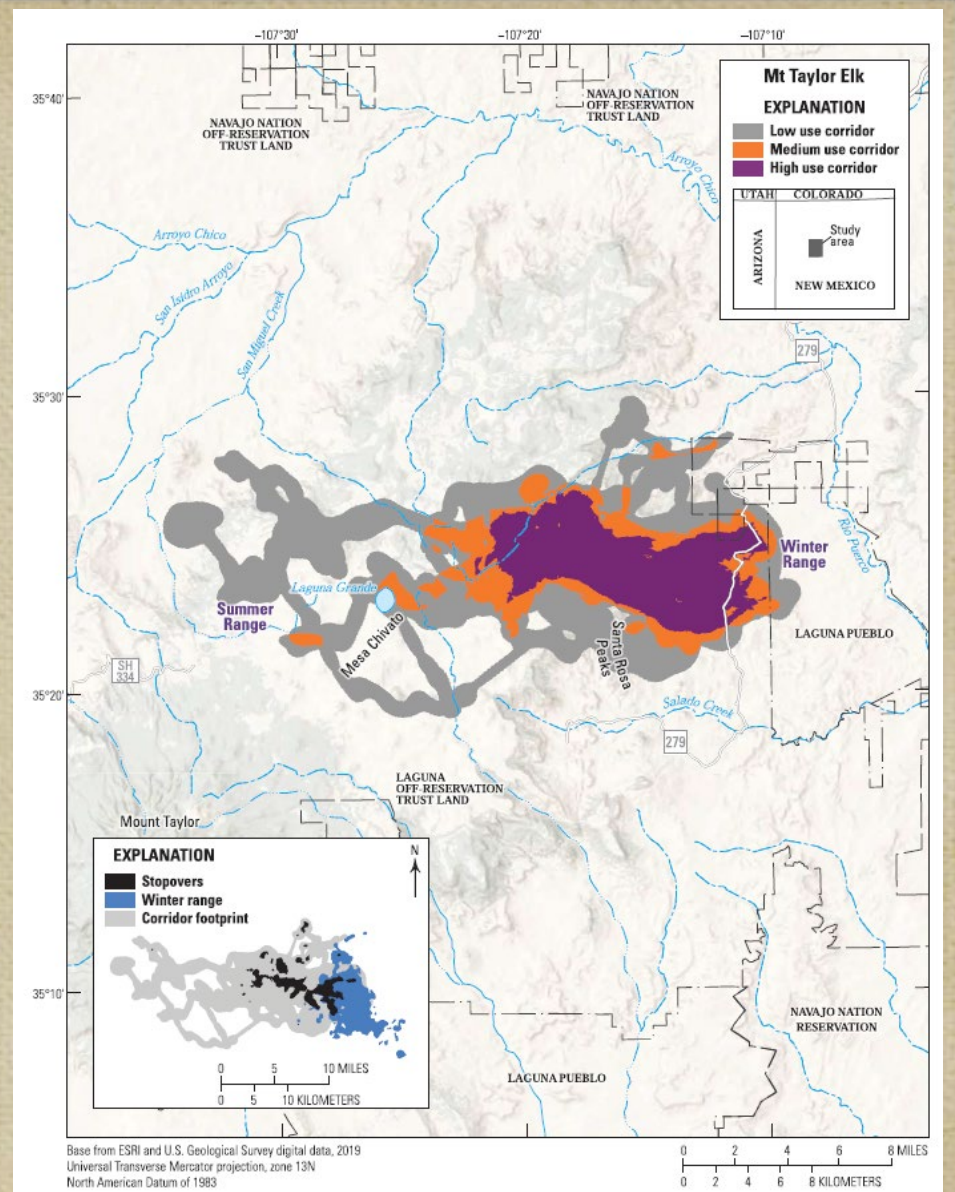
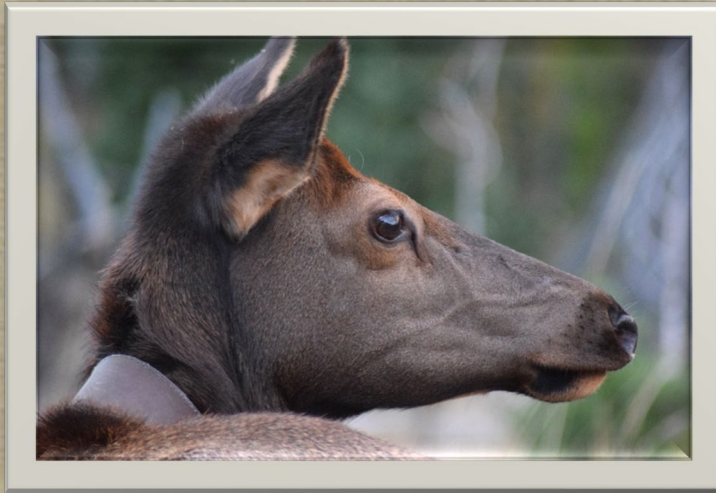


# Northcentral pronghorn



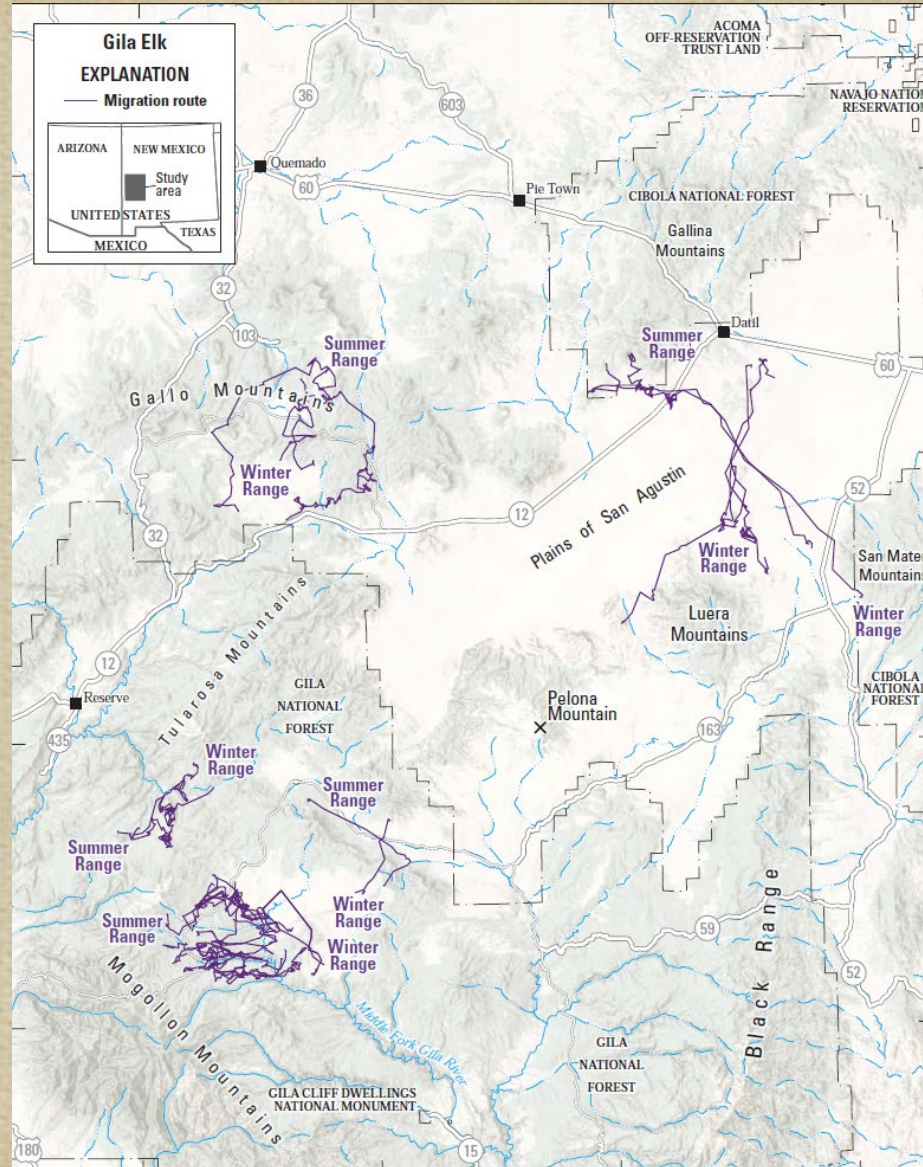
- “Barrier behavior analysis”
  - Used to identify which fence segments may be obstructing movement
  - Will benefit other terrestrial species

# Mt. Taylor elk



# Gila elk

- Not all herds migrate
  - Hundreds of collars on Gila elk
  - Mostly non-migratory
  - Only 3% of Gila elk migrated
- Elk movement data can be used to target management efforts



# Ongoing work

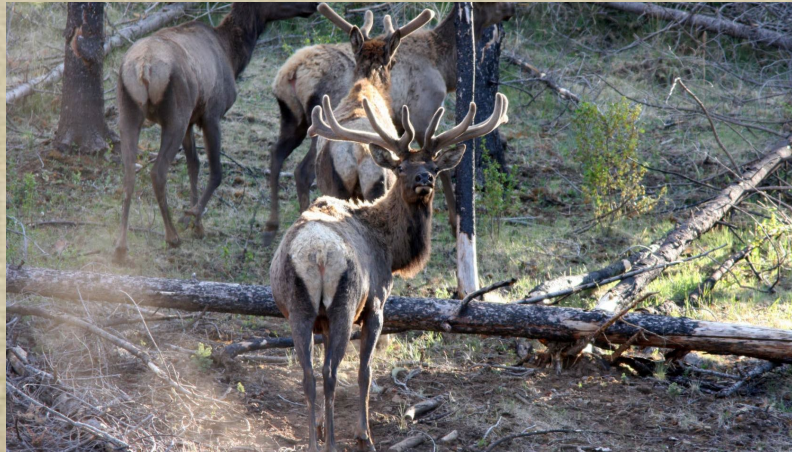


- **NMDGF Goal:** *target more arid regions where big game make important seasonal movements in response to precipitation patterns*
- **Current & upcoming projects**
  - Mule deer
    - Southern Pecos, Mt. Taylor)
  - Pronghorn movement
    - BLM/NMSU/NMDGF: Bootheel
    - DOD/NMDGF/NMSU: Southeastern NM
    - Wildlands/Tribal/NMDGF: pronghorn near solar development NW
  - Sand conveyer project & deer movement response
    - Developer sponsoring work to identify changes in movement after installation



# Key takeaways

- **Collaborative efforts key**
  - Many entities fund work and have data or expertise
    - BLM, NMSU, USGS, Tribal Nations, Consultants, DOD
  - Future \$\$ available to expand work (WAFWA grant 2025-2027)
    - Benefits to other species
- **More work to be done**
  - No data DOES NOT mean migration is not occurring or an area is not important



S. Liley, January 10, 2025

8/9



# Questions?



S. Liley, January 10, 2025