

Overview of Wildlife Management Areas



State Game Commission
June 18, 2021
Santa Fe, NM

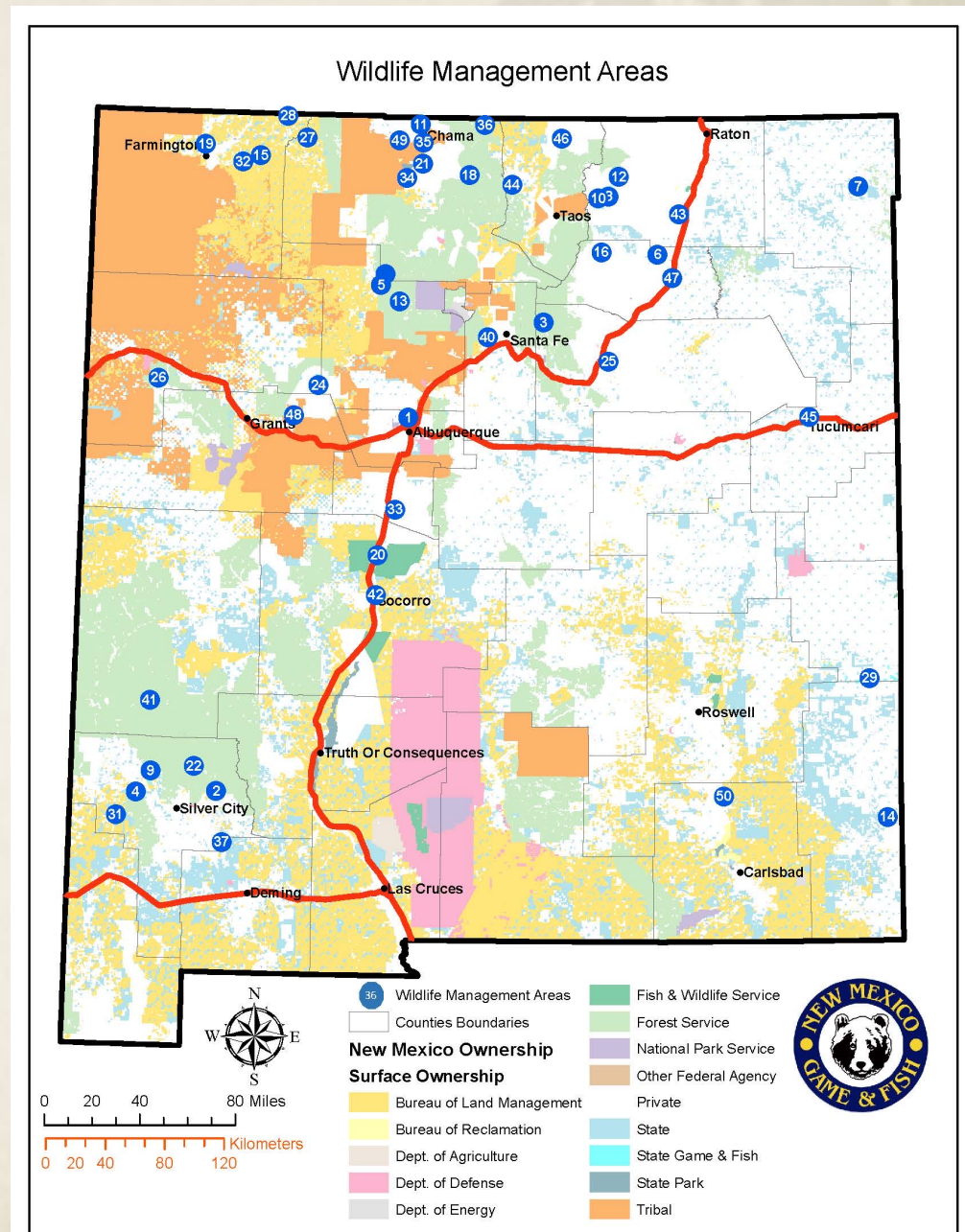
Wildlife Management Areas

- Managed by the New Mexico Department of Game and Fish
- For the benefit of fish, wildlife, and their habitats
- Provide public access for
 - Hunting
 - Fishing
 - Wildlife-associated recreation



Wildlife Management Areas

- 198,000 total acres
- 97 Independently Managed Parcels



Types of Wildlife Management Areas

Type	Parcels	Acreage
General WMAs	42	146,424
Prairie Chicken WMAs	30	28,382
WMAs Managed by Another Entity	9	5,587
Fishing Access Easements	4	263
State Trust Land Leases	6	11,190
BLM Allotments	4	6,139
Local and Private Leases	2	466
Total	97	198,451

**Excludes fish hatcheries, facilities, shooting ranges, and Open Gate Leases

Colin Neblett WMA

- 31,912 acres. Largest WMA. Colfax Co, NM.
- Purchased in 1949 for elk and large game conservation and to improve fishing access
- Public Use: Hunting (by WMA draw); Fishing; Camping; Hiking; Wildlife Viewing.
- Portion near Cimarron River managed by NMSPD as Cimarron Canyon State Park



William S. Huey WMA

- 3,428 acres. Eddy Co, NM.
- Purchased beginning in 1963 to for waterfowl and Sandhill Crane.
- Public Use: Hunting (by WMA Draw); Fishing; Hiking, Bicycling, Wildlife Viewing.
- Undergone major improvements.



River Ranch WMA

- Acreage: 1,011 deeded; 1,800 BLM; 1,120 State Land. Grant/Luna Co, NM.
- Purchased in 2014 using Natural Resource Damage Assessment and Restoration (NRDAR) funds.
- Public Use: Opened to the public in January 2019.
- One of the newest WMAs. Now open to the public for non-motorized access.



Double E WMA

- Acreage: 5,828 deeded; 3,644 BLM; 2,493 State Land. Grant Co, NM.
- Purchased in 2014 using Natural Resource Damage Assessment and Restoration (NRDAR).
- One of the newest WMAs.



Rules Governing Use of WMAs

- 19.34.5 NMAC 1978 “Wildlife Management Areas”
- 19.31.10 NMAC 1978 “Hunting and fishing – Manner and method of taking”
- 19.34.3 NMAC 1978 “Use of State Game Commission Lands”

19.34.3 NMAC – WMA Access

- **Revised in 2016**
- **Facilitate the public going outdoors**
- **Simplify and standardize WMA access rules**
- **Make sure access doesn't:**
 - **Negatively impact wildlife resources**
 - **Violate purpose of the property**



19.34.3 NMAC – WMA Access



- **WMAs are open unless otherwise closed**
- **Eliminated GAIN permit**
- **Group Access:**
 - **Group = up to 4 adults**
 - **One hunting or fishing and/or HMAV required per group**

19.34.3 NMAC – WMA Access



- **Lands closed to general access during designated big game and waterfowl hunting seasons**
- **Scouting allowed 7 days prior to hunt period**
- **Hunter and up to 3 guests exempt from closures during hunt and scouting period**
- **Camping limit increased to 14 days**

19.34.3 NMAC – Director's Authority

- 19.34.3 NMAC 1978 “Use of State Game Commission Lands” – Allows Director to approve specific rules for individual WMAs



Tamarisk Removal-Ladd S Gordon



Habitat Management

Wetland Management-La Joya WMA



Prescribed Fire-Sandhills PCA



Forest Thinning/Wildfire Mitigation
Colin Neblett WMA



Riparian Exclosures/BDAs-Sargent WMA



Fish Habitat Enhancement-Pecos



Farming for Wildlife-Bernardo WMA



Tree/Shrub Planting-Huey WMA



Public Access and Infrastructure

Elk Viewing Trail – Sargent WMA



Fence Replacement – Sandhills PCA



Wetland Litter Cleanup – La Jota WMA



Elevated Viewing Platform – Bernardo WMA



Access Road Repairs – Marquez WMA



Research, Education, and Outreach

Sandhill Crane Research – Bernardo WMA



Volunteer Hunting Blind Construction – Bernardo WMA



Agency and Landowner Interface – PCAs



Youth Work Crew – River Ranch WMA



Questions?



WMA Investments - Annual

- Manage 1,800 acres of wetlands
- Grow 650 acres of crops for wintering and breeding wildlife
- Maintain facilities on 28 WMAs for public and administrative use



WMA Investments – Past 5 Years

- 7,000 acres of habitat management and restoration
- 5,700 trees and shrubs planted for wildlife
- 30 miles of fencing repair, replacement, or removal for wildlife
- 70 miles of road repairs for hunter, angler, and general public access
- Dozens of fish and angler access improvements conducted by FMD
- Over 500 tons of litter, derelict structures, and debris removed.



WMA Investments – Future

- Completion of headquarters and public access infrastructure on WS Huey WMA and Bernardo WMA
- Jackson Lake irrigation system redesign to conserve water for both fishing and watering crops for wildlife
- Jackson Lake public access improvements with San Juan County
- Over 40 miles of fence replacement and repair with boundary surveys, as needed; Statewide with intensive focus on PCAs
- Enhancement/construction of 1,400 acres of wetland on Bernardo and La Joya WMAs to improve hunter opportunity and conserve water
- Tucumcari Lake habitat and recreation enhancement in cooperation with City of Tucumcari and Quay County
- Continued mesquite removal and habitat management on PCAs
- Replacement of approximately 150 WMA Rules and Information kiosk signs
- Revamp of WMA webpages along with rules sign upgrades
- Publication of a WMA Booklet with IED featuring WMA access and use information
- Upgrade of camp areas, corrals, and facilities on Edward Sargent and W.A. Humphries WMAs