

## General Information

- You Must Have All of the Following While in the Field (page 8).
- All Elk Harvests Must Be Tagged (pages 33).
- License Requirements and Fees (see pages 8–13).
- Private land Elk License Fees (see page 69).
- Legal Sporting Arms for Elk Hunting (specified by hunt code, see page 26).
- Hunting on Military Reservations (see page 42).
- Mobility-impaired Hunts (see pages 15–16).
- Youth-only Hunts (see page 15).
- Chronic Wasting Disease Rules (see page 24).
- It is Legal to Harvest a Marked Animal (see page 5).

## Elk Draw Licenses

Deadline to apply for elk draw licenses is March 20, 2024. Up to four hunters may apply per application. **Non-residents are ineligible** for any hunts held exclusively on WMAs or any antlerless (A) elk draw licenses.

Successful applicants will be mailed an elk draw license/tag, unless the E-Tag option is chosen. The license includes a hunt code and description of the unit, sporting-arm type, season dates and bag limit. Tags include instructions for proper tagging.

## Fee Types for Elk Draw Licenses (see glossary, pages 154–159)

Resident and non-resident fees are listed on page 13.

<b>S</b>	Standard hunt
<b>Q</b>	Quality hunt
<b>HD</b>	High-demand hunt
<b>Q/HD</b>	Quality and high-demand hunt combination

The highest fee for any hunt choice must be paid at the time of application. If a lower fee hunt is drawn, the difference will be refunded.

## Fourth-Choice Elk Hunts

By selecting fourth choice, applicants indicate they are willing to accept any elk hunt in a specific quadrant of the state. The fourth-choice assignment will always be for the same sporting-arm type as the 1st choice on the application.

Hunters should understand that success rates for fourth-choice hunts may be low, due to small and/or localized elk populations. Not all hunts are available in the 4th-choice hunt pool. **Hunters who apply for and receive a fourth-choice hunt will not receive a refund if dissatisfied with the hunt drawn.**

A hunter drawing a fourth-choice hunt could receive a license with an antlerless bag limit, even if his/her prior three choices were for mature bull licenses.

If applying for a fourth-choice hunt, applicants must select one of the four quadrants listed.

## Fourth-Choice Elk Hunt Quadrants

<b>NW</b>	Northwest: Units 2, 4, 5, 6, 7, 9, 10, 12 or 14
<b>NE</b>	Northeast: Units 42, 43, 45, 47, 48, 49, 50, 51, 52, 53, 54, 55, 56, 57, 58 or 59
<b>SW</b>	Southwest: Units 13, 15, 16, 17, 18, 19, 21, 22, 23 or 24
<b>SE</b>	Southeast: Units 28, 30, 33, 34, 36, 37 or 38

## Bag Limit (Glossary, page 154–159)

<b>MB</b>	Mature bull (any forked antler bull). A spike bull is not legal.
<b>MB/A</b>	Mature bull or antlerless elk. A spike bull is not legal.
<b>A</b>	Antlerless elk.
<b>ES</b>	Either sex (any one elk, includes spike bull).
<b>APRE/6</b>	Antler-point-restricted elk (six or more points on at least one antler).
<b>APRE/6/A</b>	Antler-point-restricted elk (six or more points on at least one antler) or antlerless.

## Valle Vidal

**Once-in-a-Lifetime Mature Bull/Either Sex:** Only people who have never drawn a MB or ES hunt on the Valle Vidal are eligible to apply. **Exception: people who have drawn the Valle Vidal once-in-a-youth MB or A hunt are still eligible to apply.**

**Once-in-a-Lifetime Antlerless:** Only New Mexico residents who have never drawn an antlerless (A) hunt on the Valle Vidal are eligible to apply. **Exception: New Mexico residents who have drawn the Valle Vidal once-in-a-youth MB or A hunt are still eligible to apply.**

**Note:** If a youth has drawn a Valle Vidal once-in-a-lifetime hunt, she/he will not be eligible as an adult for that hunt. However, if the youth has drawn a Valle Vidal once-in-a-youth hunt, she/he is eligible to draw a once-in-a-lifetime Valle Vidal hunt.

**Once-in-a-Youth Mature Bull:** Only hunters 17 years or younger who have never drawn a youth-only MB hunt and who possess a hunter education number (page 19) are eligible to apply.

**Once-in-a-Youth Antlerless:** Only New Mexico residents 17 years or younger who have never drawn a youth-only antlerless hunt and possess a hunter education number (page 19) are eligible to apply.

## Private-Land Hunts

Private-land elk hunts are available in the primary, secondary and special elk management zones. Participating primary and special elk management zone landowners and their contact information is available online:

<https://www.wildlife.state.nm.us/hunting/maps/eplus/>

Private-Land Elk Licenses may be purchased online, by telephone, and at NMDGF offices or license vendors. Online and telephone purchases must be made at least 14 days prior to the hunt start date to allow time for mailing. For assistance with this process please call: **1-888-248-6866**.

**Primary Management Zone:** Areas within the state where elk management is focused and the number of licenses is limited. Private-land elk authorizations are issued in the primary management zone to landowners participating in the Elk Private Lands Use System (EPLUS). Authorizations can be bartered, sold or traded. An authorization allows the holder to purchase a Private-Land Elk License.

To purchase a Private-Land Elk License for the primary management zone, a hunter must have an authorization number from a landowner participating in the EPLUS program. Authorizations can be bartered, sold or traded.

**Secondary Management Zone:** Areas not part of the primary or special management zones where no specific elk management goals are set. Private-Land Elk Licenses in the secondary management zone are unlimited and available over the counter with a ranch code provided by a registered landowner and are valid only on the private landowner's deeded property, or other private lands within the secondary management zone with written landowner permission. (Written permission from the landowner while hunting is required for the license to be valid). Visit <https://www.wildlife.state.nm.us/download/hunting/maps/Written-Permission-to-Hunt-Private-Land.pdf> to download the form.

**Special Management Zone:** Areas not part of the primary or secondary management zones where private-land elk authorizations are issued to private landowners on a ranch-by-ranch basis through EPLUS. To purchase a Private-Land Elk License for the special management zone, a hunter must have an authorization number from a landowner participating in the EPLUS program.

## Obtaining Authorizations

### The process for obtaining private land elk authorization:

Hunters must obtain an authorization number or ranch code from the landowner, guide or outfitter. The number or code will then be presented to NMDGF or an authorized vendor who will then issue the elk license. The fee for the authorization is decided by the landowner, guide or outfitter, and this fee does not apply to the elk license fee paid to NMDGF.

Hunters seeking private-land authorizations are encouraged to communicate clearly with landowners regarding conditions associated with the license purchased and any other special considerations. Hunters are further encouraged to obtain these communications in writing. Obtaining private-land elk authorizations is considered a private matter. NMDGF is not a party to these transactions or communications and is not responsible for resolving disputes.

Landowners participate voluntarily in private-land programs, and the courtesy each hunter exercises can affect future access for all hunters.

**Hunters may not hold both a Private-Land Elk License and a Draw Elk License in the same license year and may not exchange a draw license for a Private-Land License.**

## Unit-wide or Ranch-Only Authorizations

**Unit-wide:** A unit-wide authorization number allows a hunter to purchase an elk license valid on any legally accessible public lands, other unit-wide ranches, and other private land with written permission within the GMU. Unit-wide authorizations are available only in the primary management zone. A habitat stamp is required.

**Ranch-Only:** A ranch-only authorization number allows a hunter to purchase an elk license valid only on the private deeded acres of the designated ranch, except as otherwise allowed by rule. In GMUs 4, 5A, and in secondary and special management zones, ranch-only elk licenses may also be valid on other private lands within the same GMU and management zone, with written permission. Ranch-only licenses are not valid on any public land.

It is not considered trespassing if a hunter is in possession of a Private-Land Elk License that has been obtained from the owner or person in control of the land and which grants access to that particular private land for the purpose of lawfully taking elk (pages 27–28). However, in the secondary management zone written permission from the landowner is required for the elk hunter.

### Elk Management Zone and Unit-Wide Ranch Maps

Maps of the elk management zones and unit-wide ranches are available online: [www.wildlife.state.nm.us/hunting/maps/eplu/](http://www.wildlife.state.nm.us/hunting/maps/eplu/)

### License Fees (additional requirements, pages 8–15)

In the Primary and Special Management Zones, a \$9 landowner administrative fee will apply.

	Resident	Non-resident
Antlerless	\$60	\$338
Mature-Bull or Either-Sex	\$90	\$548
Quality Antlerless	\$60	\$773
Quality Mature-Bull or Either-Sex	\$90	\$773
Junior/Senior Elk License	\$58	Not Issued

### Quality Elk Hunt Fees for Private-land Authorizations

For all hunt dates from Sept. 15–Oct. 15, quality elk license fees apply to any mature-bull (MB) or either-sex (ES) ranch-only authorization (except Youth-Only) on private lands that lie within the primary management zone in Units 13, 15, 16 and 17.

### Quality elk license fees shall apply to any unit-wide license for the following hunts:

Bow-Only Hunts:	ELK-2-257, ELK-2-265, ELK-2-273, ELK-2-280, ELK-2-285, ELK-2-292, ELK-2-299, ELK-2-306.
Muzzleloader, Crossbow and Bow Hunts:	ELK-3-259, ELK-3-267, ELK-3-301 and ELK-3-308.
Any Legal Sporting Arm Hunts:	ELK-1-274, ELK-1-275, ELK-1-281, ELK-1-282, ELK-1-287, ELK-1-293, ELK-1-294

### Primary Management Zone Seasons

**Ranch-Only Season Dates:** Ranch-only authorizations within the primary management zone are restricted to the following season dates and sporting arm type.

#### Bow-Only Hunts

License valid for either season (select one or the other)

Dates	Units
Sept. 1–14	2, 4, 5A, 5B, 6A, 6C, 7, 9, 10, 12, 13, 15, 16A, 16B/22, 16C, 16D, 16E, 17, 21A, 21B, 23, 24, 34, 36, 45, 48, 49 and 50–53
Sept. 15–24	2, 4, 5A, 5B, 6A, 6C, 7, 9, 10, 12, 13, 15, 16A, 16B/22, 16C, 16D, 16E, 17, 21A, 21B, 23, 24, 34, 36, 45, 48, 49 and 50–53

#### Muzzleloader, Crossbow and Bow Hunts

License limited to any five consecutive days within a season listed below

Dates	Units
Oct. 5–9	2, 6A, 6C, 7, 10, 36, 45, 48, 52 and 53
Oct. 12–16	16E, 23, 24 and 34
Oct. 12–Dec. 31	9, 13, 15, 17 (muzzle-loading rifles only)
Jan. 1–31, '25	13 (antlerless elk only; muzzle-loading rifles only; pending ranch approval by NMDGF)

## *Primary Management Zone Seasons: Ranch-Only Season Dates—continued.*

### **Any Legal Sporting Arm Hunts**

License limited to any five consecutive days within a season listed below.

Dates	Units
Oct. 1–Dec. 31	4, 21B
Oct. 5–Dec. 31	5A, 5B, 12, 16B/22, 21A, 49, 50 and 51
Oct. 12–Dec. 31	2, 10, 6A, 6C, 7, 16A, 16C, 16D, 36, 45, 48, 52 and 53
Oct. 12–Jan. 31, '25	36 (Antlerless only)
Oct. 19–Dec. 31	16E, 23, 24 and 34
Oct. 19–Feb. 5, '25	34 (Antlerless only)
Jan. 1–31, '25	48 any legal weapon; antlerless elk only; pending ranch approval by NMDGF

### **Youth–Only Season Dates:**

Dates	Units
<b>Any Legal Sporting Arm Hunts</b>	
Oct. 5–9	16C, 16E, 23, 24 and 34

### **Muzzleloader, Bow or Crossbow Hunts**

Oct. 5–9	13, 15 and 17
----------	---------------

### **Mobility–impaired Season Dates:**

Dates	Units
<b>Any Legal Sporting Arm Hunts</b>	
Oct. 5–9	16A, 16D and 34

### **Muzzleloader, Bow or Crossbow Hunts**

Oct. 5–9	9
----------	---

**Unit-wide Season Dates:** Unit-wide authorizations within the primary management zone correspond with an elk draw hunt code for the same GMU and are restricted to the same bag limit, sporting arm and hunt dates.

### **Special and Secondary Management Zones**

**Season Dates:** All authorizations within the special and secondary management zone are ranch-only. Bow-only hunts are limited to Sept. 1–24. Any legal sporting arms hunts are limited to any five consecutive days from Oct. 1–Dec. 31, unless otherwise allowed by NMDGF.

In Unit 34, antlerless only, any legal sporting arms hunts are limited to any five consecutive days from Oct. 1–Feb. 7, '25. In Unit 36, antlerless only, any legal sporting arms hunts are limited to any five consecutive days from Oct. 1–Jan. 31, '25.

## Elk Draw Licenses

Draw licenses authorize the hunter to hunt on any open public land or any unit-wide private ranch within the specified unit or hunt area, and on any other private land in that unit, provided that written permission has been obtained from the landowner of the property. Draw hunts for WMAs or special-hunt areas are valid only on the chosen WMA or special-hunt area printed on the license.

**Closed Areas:** Military reservations, national parks and monuments, state parks and monuments, recreation areas, national wildlife refuges, state WMAs, and other locations may be closed or restrict hunting. All state WMAs are closed unless officially designated open to hunting.

	Hunt Dates	Hunt Code	Fee Type	Licenses	Bag Limit
<b>Premium Statewide Elk Hunt</b> (see page 36)					
Any Legal	Sep. 1-Jan.31, '25	ELK-1-700	S	1	MB
<b>Unit 2</b>					
Bow	Sep. 1-14	ELK-2-129	S	120	ES
Bow	Sep. 15-24	ELK-2-130	S	120	ES
Muzzle	Oct. 5-9	ELK-3-131	S	135	MB
Any Legal	Oct. 12-16	ELK-1-132	S	85	MB
Any Legal - NM Resident Only	Dec. 14-18	ELK-1-133	S	125	A
Any Legal - NM Resident Only / Youth Only	Dec. 14-18	ELK-1-134	S	75	A
<b>Unit 2C</b> (NM Residents Only)					
Any Legal	Dec. 7-11	ELK-1-135	S	75	A
<b>Unit 4 Sargent WMA Only</b> (NM Residents Only)					
Bow	Sep. 1-14	ELK-2-163	Q	10	ES
Bow	Sep. 15-24	ELK-2-164	Q	10	ES
Any Legal	Oct. 5-9	ELK-1-165	Q	10	MB/A
Any Legal	Oct. 12-16	ELK-1-166	Q	10	MB/A
Any Legal	Oct. 19-23	ELK-1-167	Q	10	MB/A
Any Legal	Oct. 26-30	ELK-1-168	S	10	MB/A
Any Legal	Nov. 2-6	ELK-1-169	S	10	A
Any Legal - Youth Only	Nov. 2-6	ELK-1-170	S	10	A

## Unit 4 Humphries and Rio Chama WMAs Only (NM Residents Only)

Bow	Sep. 1-14	ELK-2-171	S	10	ES
Bow	Sep. 15-24	ELK-2-172	S	10	ES
Any Legal	Oct. 5-9	ELK-1-173	S	15	MB/A
Any Legal	Oct. 12-16	ELK-1-174	S	15	MB/A
Any Legal	Nov. 2-6	ELK-1-175	S	10	A
Any Legal - Youth Only	Nov. 2-6	ELK-1-176	S	15	A

## Unit 4 Rio Chama WMA Only (NM Residents Only)

Any Legal	Nov. 9-13	ELK-1-177	S	20	A
-----------	-----------	-----------	---	----	---

## Unit 5A (Public Land Only)

Bow	Sep. 1-14	ELK-2-136	S	5	ES
Bow	Sep. 15-24	ELK-2-137	S	5	ES
Any Legal	Oct. 5-9	ELK-1-138	S	10	MB
Any Legal – NM Resident Only	Oct. 5-9	ELK-1-139	S	10	A
Any Legal	Oct. 12-16	ELK-1-140	S	10	MB
Any Legal – NM Resident Only	Oct. 12-16	ELK-1-141	S	10	A
Any Legal	Oct. 19-23	ELK-1-142	S	10	MB
Any Legal – NM Resident Only	Oct. 19-23	ELK-1-143	S	10	A
Any Legal	Oct. 26-30	ELK-1-144	S	10	MB
Any Legal – NM Resident Only	Oct. 26-30	ELK-1-145	S	10	A

## Unit 5B

Bow	Sep. 1-14	ELK-2-178	HD	76	ES
Bow	Sep. 15-24	ELK-2-179	S	75	ES
Any Legal	Oct. 5-9	ELK-1-180	S	86	MB
Any Legal - NM Resident Only	Oct. 12-16	ELK-1-181	S	59	A
Any Legal	Oct. 19-23	ELK-1-182	S	86	MB
Any Legal - NM Resident Only	Oct. 26-30	ELK-1-183	S	59	A
Any Legal	Nov. 2-6	ELK-1-184	S	87	MB

Any Legal - NM Resident Only	Nov. 9-13	ELK-1-185	S	59	A
Any Legal	Dec. 21-25	ELK-1-186	HD	87	MB

### Unit 6A

Bow	Sep. 1-14	ELK-2-213	HD	150	ES
Bow	Sep. 15-24	ELK-2-214	HD	102	ES
Muzzle	Oct. 5-9	ELK-3-215	HD	104	MB
Any Legal	Oct. 12-16	ELK-1-216	S	100	MB
Any Legal	Oct. 19-23	ELK-1-217	HD	103	MB
Any Legal - NM Resident Only	Oct. 26-30	ELK-1-218	S	99	A

### Unit 6B (Valles Caldera — Hunter orientation is required, see page 44)

Bow	Sep. 1-14	ELK-2-219	Q/HD	25	ES
Bow - NM Resident Only	Sep. 1-14	ELK-2-220	S	10	A
Bow	Sep. 15-24	ELK-2-221	Q/HD	25	ES
Bow - NM Resident Only	Sep. 15-24	ELK-2-222	S	10	A
Muzzle	Oct. 5-9	ELK-3-223	Q/HD	15	ES
Muzzle - NM Resident Only	Oct. 5-9	ELK-3-224	S	20	A
Any Legal	Oct. 12-16	ELK-1-225	Q/HD	15	ES
Any Legal - NM Resident Only	Oct. 12-16	ELK-1-226	S	20	A
Any Legal	Oct. 19-23	ELK-1-227	Q/HD	20	ES



NMDGF photo



Any Legal - NM Resident Only	Oct. 19-23	ELK-1-228	S	15	A
Any Legal - NM Resident Only / Youth Only	Oct. 26-30	ELK-1-229	S	35	A
Any Legal - NM Resident Only	Nov. 2-6	ELK-1-230	S	35	A
Any Legal - NM Resident Only	Nov. 16-20	ELK-1-231	S	35	A
Any Legal - NM Resident Only / Youth Only	Nov. 23-27	ELK-1-232	S	35	A
Any Legal - NM Resident Only	Nov. 30-Dec.4	ELK-1-233	S	35	A

## Unit 6C

Bow	Sep. 1-14	ELK-2-234	HD	150	ES
Bow	Sep. 15-24	ELK-2-235	HD	105	ES
Muzzle	Oct. 5-9	ELK-3-236	HD	155	MB
Any Legal	Oct. 12-16	ELK-1-237	S	105	MB
Any Legal	Oct. 19-23	ELK-1-238	S	105	MB
Any Legal - NM Resident Only	Oct. 26-30	ELK-1-239	S	110	A
Any Legal - NM Resident Only	Nov. 23-27	ELK-1-240	S	110	A

## Unit 7

Bow	Sep. 1-14	ELK-2-241	S	15	ES
Bow	Sep. 15-24	ELK-2-242	S	14	ES
Muzzle	Oct. 5-9	ELK-3-243	S	24	MB
Any Legal	Oct. 12-16	ELK-1-244	S	30	MB
Any Legal - NM Resident Only	Oct. 19-23	ELK-1-245	S	50	A

## Unit 9 Marquez/LBar WMA Only (NM Residents Only)

Bow	Sep. 1-14	ELK-2-146	S	15	ES
Bow	Sep. 15-24	ELK-2-147	S	15	ES
Muzzle	Oct. 5-9	ELK-3-148	S	15	MB
Muzzle	Oct. 12-16	ELK-3-149	S	15	MB
Muzzle	Oct. 19-23	ELK-3-150	S	15	MB

**Unit 9 (Including Water Canyon)**

Bow	Sep. 1-14	ELK-2-151	S	82	ES
Bow	Sep. 15-24	ELK-2-152	S	82	ES
Muzzle - Mobility Impaired Only	Oct. 5-9	ELK-3-153	S	21	MB
Muzzle	Oct. 12-16	ELK-3-154	S	35	MB
Muzzle	Oct. 19-23	ELK-3-155	S	35	MB
Muzzle	Oct. 26-30	ELK-3-156	S	21	MB

**Unit 10**

Bow	Sep. 1-14	ELK-2-157	S	125	ES
Bow	Sep. 15-24	ELK-2-158	HD	125	ES
Muzzle	Oct. 5-9	ELK-3-159	S	70	MB
Any Legal	Oct. 12-16	ELK-1-160	S	70	MB
Any Legal - NM Resident Only / Youth Only	Nov. 9-13	ELK-1-161	S	120	A
Any Legal - NM Resident Only	Dec. 7-11	ELK-1-162	S	100	A

**Unit 12**

Bow	Sep. 1-14	ELK-2-246	HD	36	ES
Bow	Sep. 15-24	ELK-2-247	HD	35	ES
Bow	Dec. 7-11	ELK-2-255	S	25	APRE/6
Any Legal	Oct. 5-9	ELK-1-248	HD	35	MB
Any Legal	Oct. 12-16	ELK-1-249	HD	60	MB
Any Legal	Oct. 19-23	ELK-1-250	S	80	MB
Any Legal	Nov. 9-13	ELK-1-251	HD	80	MB
Any Legal - NM Resident Only	Nov. 16-20	ELK-1-252	S	60	A
Any Legal - NM Resident Only	Nov. 23-27	ELK-1-253	S	60	A
Any Legal - NM Resident Only	Nov. 30-Dec.4	ELK-1-254	S	64	A

## Unit 13

Bow	Sep. 1-14	ELK-2-256	HD	202	ES
Bow	Sep. 15-24	ELK-2-257	Q/HD	148	ES
Muzzle - Youth Only	Oct. 5-9	ELK-3-258	HD	30	ES
Muzzle	Oct. 12-16	ELK-3-259	Q/HD	86	MB
Muzzle	Oct. 19-23	ELK-3-260	HD	126	MB
Muzzle	Nov. 16-20	ELK-3-261	HD	126	MB
Muzzle - NM Resident Only	Dec. 7-11	ELK-3-262	S	117	A
Muzzle - NM Resident Only	Dec. 14-18	ELK-3-263	S	116	A

## Unit 14

Any Legal	Oct. 1-5	ELK-1-392	S	10	ES
-----------	----------	-----------	---	----	----

## Unit 15

Bow	Sep. 1-14	ELK-2-264	HD	350	ES
Bow	Sep. 15-24	ELK-2-265	Q/HD	250	ES
Muzzle - Youth Only	Oct. 5-9	ELK-3-266	HD	25	ES
Muzzle	Oct. 12-16	ELK-3-267	Q/HD	200	MB
Muzzle	Oct. 19-23	ELK-3-268	HD	245	MB
Muzzle	Nov. 9-13	ELK-3-269	HD	250	MB
Muzzle - NM Resident Only	Dec. 7-11	ELK-3-270	S	250	A
Muzzle - NM Resident Only	Dec. 14-18	ELK-3-271	S	250	A

## Unit 16A

Bow	Sep. 1-14	ELK-2-272	HD	250	ES
Bow	Sep. 15-24	ELK-2-273	Q/HD	150	ES
Any Legal - Mobility Impaired Only	Oct. 5-9	ELK-1-274	Q/HD	25	MB
Any Legal	Oct. 12-16	ELK-1-275	Q/HD	75	MB
Any Legal	Oct. 19-23	ELK-1-276	HD	100	MB
Any Legal - NM Resident Only	Dec. 7-11	ELK-1-277	S	75	A
Any Legal - NM Resident Only	Dec. 14-18	ELK-1-278	S	75	A

**Units 16B, 22**

Bow	Sep. 1-14	ELK-2-279	HD	225	ES
Bow	Sep. 15-24	ELK-2-280	Q/HD	165	ES
Any Legal	Oct. 5-9	ELK-1-281	Q/HD	25	MB
Any Legal	Oct. 12-16	ELK-1-282	Q/HD	80	MB
Any Legal	Oct. 19-23	ELK-1-283	HD	120	MB

**Unit 16C**

Bow	Sep. 1-14	ELK-2-284	HD	144	ES
Bow	Sep. 15-24	ELK-2-285	Q/HD	100	ES
Any Legal - Youth Only	Oct. 5-9	ELK-1-286	S	25	ES
Any Legal	Oct. 12-16	ELK-1-287	Q	35	MB
Any Legal	Oct. 19-23	ELK-1-288	HD	65	MB
Any Legal - NM Resident Only	Dec. 7-11	ELK-1-289	S	50	A
Any Legal - NM Resident Only	Dec. 14-18	ELK-1-290	S	48	A

**Unit 16D**

Bow	Sep. 1-14	ELK-2-291	HD	90	ES
Bow	Sep. 15-24	ELK-2-292	Q/HD	60	ES
Any Legal - Mobility Impaired Only	Oct. 5-9	ELK-1-293	Q/HD	25	MB
Any Legal	Oct. 12-16	ELK-1-294	Q/HD	55	MB
Any Legal	Oct. 19-23	ELK-1-295	HD	50	MB
Any Legal - NM Resident Only	Dec. 7-11	ELK-1-296	S	50	A
Any Legal - NM Resident Only	Dec. 14-18	ELK-1-297	S	50	A

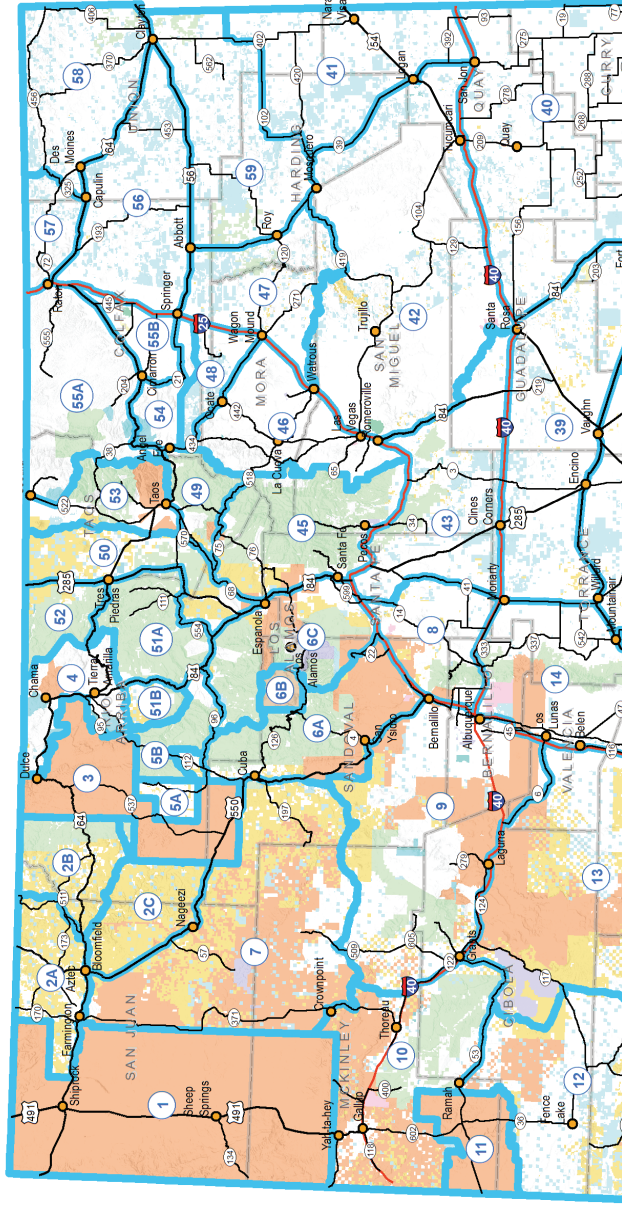
**Unit 16E**

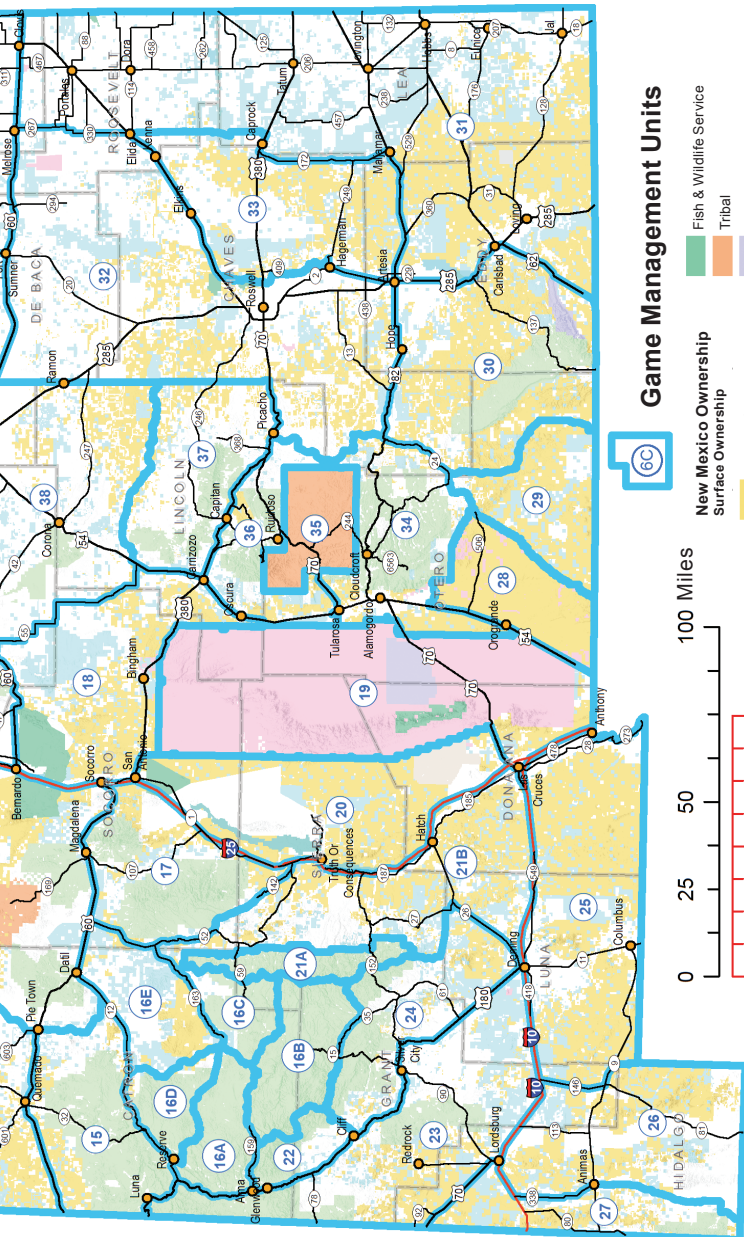
Bow	Sep. 1-14	ELK-2-298	S	90	ES
Bow	Sep. 15-24	ELK-2-299	Q/HD	60	ES

# Game Management Unit Map

Individual unit maps can be downloaded at: [www.wildlife.state.nm.us](http://www.wildlife.state.nm.us)

This map is for locating Game Management Units (GMUs) and is not intended for determining precise boundaries. GMU maps are available at: <https://www.wildlife.state.nm.us/hunting/maps/big-game-unit-maps-pdfs/>. Also an electronic GMU map application for mobile devices is available at the Bureau of Land Management website: [www.blm.gov/nm/huntingmaps](http://www.blm.gov/nm/huntingmaps).





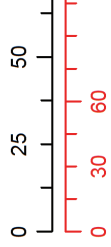
6C

### Game Management Units

- |                             |                                  |
|-----------------------------|----------------------------------|
| <b>New Mexico Ownership</b> | Fish & Wildlife Service          |
| <b>Surface Ownership</b>    | Tribal                           |
| Bureau of Land Management   | National Park Service            |
| Bureau of Reclamation       | Private                          |
| Dept. of Agriculture        | State                            |
| Dept. of Defense            | State Game & Fish                |
| Dept. of Energy             | State Park                       |
| Forest Service              | Valles Caldera National Preserve |

100 Miles

120 Kilometers



Muzzle	Oct. 12-16	ELK-3-301	Q/HD	70	MB
Any Legal - Youth Only	Oct. 5-9	ELK-1-300	HD	25	ES
Any Legal	Oct. 19-23	ELK-1-302	HD	53	MB
Any Legal - NM Resident Only	Dec. 7-11	ELK-1-303	S	75	A
Any Legal - NM Resident Only	Dec. 14-18	ELK-1-304	S	75	A

## Unit 17

Bow	Sep. 1-14	ELK-2-305	HD	125	ES
Bow	Sep. 15-24	ELK-2-306	Q/HD	75	ES
Muzzle - Youth Only	Oct. 5-9	ELK-3-307	HD	25	ES
Muzzle	Oct. 12-16	ELK-3-308	Q/HD	100	MB
Muzzle	Oct. 19-23	ELK-3-309	S	100	MB
Muzzle	Nov. 16-20	ELK-3-310	HD	25	MB
Muzzle - NM Resident Only	Nov. 16-20	ELK-3-311	S	25	A
Muzzle - NM Resident Only	Dec. 7-11	ELK-3-312	S	100	A
Muzzle - NM Resident Only	Dec. 14-18	ELK-3-313	S	100	A

## Unit 18

Bow	Sep. 1-14	ELK-2-393	S	25	ES
Bow	Sep. 15-24	ELK-2-394	HD	25	ES
Any Legal	Oct. 1-5	ELK-1-395	HD	10	ES

## Unit 21A

Bow	Sep. 1-14	ELK-2-314	HD	50	ES
Bow	Sep. 15-24	ELK-2-315	HD	50	ES
Bow	Dec. 21-25	ELK-2-320	S	15	MB
Any Legal	Oct. 5-9	ELK-1-316	HD	15	MB
Any Legal	Oct. 12-16	ELK-1-317	HD	35	MB
Any Legal	Oct. 19-23	ELK-1-318	HD	55	MB
Any Legal - NM Resident Only	Dec. 7-11	ELK-1-319	S	30	A

### Unit 21B

Bow	Sep. 1-14	ELK-2-321	S	25	ES
Bow	Sep. 15-24	ELK-2-322	HD	25	ES
Bow	Dec. 21-25	ELK-2-330	S	15	MB
Any Legal	Oct. 1-5	ELK-1-323	S	10	MB
Any Legal	Oct. 12-16	ELK-1-324	HD	15	MB
Any Legal	Oct. 19-23	ELK-1-325	HD	25	MB
Any Legal - NM Resident Only	Nov. 16-20	ELK-1-326	S	15	A
Any Legal - NM Resident Only	Nov. 23-27	ELK-1-327	S	15	A
Any Legal - NM Resident Only	Dec. 7-11	ELK-1-328	S	15	A
Any Legal - NM Resident Only	Dec. 14-18	ELK-1-329	S	20	A

### Unit 23

Bow	Sep. 1-14	ELK-2-331	HD	125	ES
Bow	Sep. 15-24	ELK-2-332	HD	75	ES
Bow	Dec. 21-25	ELK-2-337	S	15	MB
Muzzle	Oct. 12-16	ELK-3-334	S	75	MB
Any Legal - Youth Only	Oct. 5-9	ELK-1-333	HD	25	ES
Any Legal	Oct. 19-23	ELK-1-335	HD	75	MB
Any Legal - NM Resident Only	Dec. 7-11	ELK-1-336	S	20	A
Any Legal - South of NM 78 / NM Resident Only	Dec. 21-29	ELK-1-338	S	20	A

### Unit 24 (Excluding Ft. Bayard Mgmt. Area)

Bow	Sep. 1-14	ELK-2-339	S	15	ES
Bow	Sep. 15-24	ELK-2-340	S	10	ES



Muzzle	Oct. 12-16	ELK-3-341	S	15	MB
Any Legal	Dec. 21-25	ELK-1-342	S	15	MB

### Unit 24 (Including Ft. Bayard Mgmt. Area)

Any Legal - Youth Only	Oct. 5-9	ELK-1-343	S	5	ES
Any Legal - NM Resident Only / Youth Only	Oct. 19-23	ELK-1-344	S	5	A

### Unit 28 McGregor Range Only (cWD detected in this area, see page 24)

Any Legal - McGregor Range Only / Military Only	Dec. 14-18	ELK-1-396	HD	10	ES
Any Legal - McGregor Range Only	Dec. 14-18	ELK-1-397	S	10	ES

### Unit 29 & 30

Bow	Sep. 1-14	ELK-2-398	S	20	ES
Bow	Sep. 15-24	ELK-2-399	S	20	ES
Any Legal	Oct. 1-5	ELK-1-400	S	20	ES
Any Legal	Oct. 12-16	ELK-1-401	S	30	ES

### Unit 34 (CWD detected in this area, see page 24)

Bow	Sep. 1-14	ELK-2-345	HD	200	ES
Bow	Sep. 15-24	ELK-2-346	HD	200	ES
Bow	Dec. 21-25	ELK-2-355	S	200	APRE/6/A
Muzzle	Oct. 12-16	ELK-3-350	HD	250	ES
Any Legal - Youth Only	Oct. 5-9	ELK-1-347	HD	75	ES
Any Legal - NM Resident Only / Youth Only	Oct. 5-9	ELK-1-348	S	120	A
Any Legal - Mobility Impaired Only	Oct. 5-9	ELK-1-349	S	50	ES
Any Legal	Oct. 19-23	ELK-1-351	S	150	ES
Any Legal - NM Resident Only	Nov. 23-27	ELK-1-352	S	350	A

Any Legal - NM Resident Only	Dec. 7-11	ELK-1-353	S	350	A
Any Legal - NM Resident Only	Dec. 14-18	ELK-1-354	S	350	A
Any Legal - NM Resident Only	Jan. 25-29, '25	ELK-1-356	S	200	A
Any Legal - NM Resident Only	Feb. 1-5, '25	ELK-1-357	S	200	A

### Unit 36

Bow	Sep. 1-14	ELK-2-358	HD	140	ES
Bow	Sep. 15-24	ELK-2-359	HD	140	ES
Muzzle	Oct. 5-9	ELK-3-360	HD	140	ES
Any Legal	Oct. 12-16	ELK-1-361	HD	140	ES
Any Legal	Oct. 26-30	ELK-1-362	HD	140	ES
Any Legal - NM Resident Only	Dec. 7-11	ELK-1-363	S	100	A
Any Legal - NM Resident Only	Dec. 14-18	ELK-1-364	S	100	A
Any Legal - NM Resident Only	Jan. 25-29, '25	ELK-1-365	S	100	A

### Unit 37

Bow	Sep. 1-14	ELK-2-402	HD	40	ES
Bow	Sep. 15-24	ELK-2-403	HD	30	ES
Bow	Dec. 7-11	ELK-2-407	S	50	APRE/6
Any Legal	Oct. 1-5	ELK-1-404	HD	30	MB
Any Legal	Oct. 12-16	ELK-1-405	S	30	MB
Any Legal - NM Resident Only	Nov. 23-27	ELK-1-406	S	45	A

### Unit 38

Any Legal	Oct. 1-5	ELK-1-408	S	10	ES
Any Legal	Oct. 12-16	ELK-1-409	S	10	ES

## Unit 39 & 43

Any Legal	Oct. 1-5	ELK-1-410	S	30	ES
-----------	----------	-----------	---	----	----

## Units 42, 47, 59

Bow	Sep. 1-14	ELK-2-411	S	13	ES
-----	-----------	-----------	---	----	----

Bow	Sep. 15-24	ELK-2-412	S	13	ES
-----	------------	-----------	---	----	----

Any Legal	Oct. 1-5	ELK-1-413	S	13	ES
-----------	----------	-----------	---	----	----

## Unit 45

Bow	Sep. 1-14	ELK-2-366	HD	75	ES
-----	-----------	-----------	----	----	----

Bow	Sep. 15-24	ELK-2-367	HD	73	ES
-----	------------	-----------	----	----	----

Muzzle	Oct. 5-9	ELK-3-368	S	136	MB
--------	----------	-----------	---	-----	----

Muzzle - NM Resident Only	Nov. 9-13	ELK-3-371	S	49	A
---------------------------	-----------	-----------	---	----	---

Any Legal	Oct. 12-16	ELK-1-369	S	140	MB
-----------	------------	-----------	---	-----	----

Any Legal	Oct. 19-23	ELK-1-370	S	140	MB
-----------	------------	-----------	---	-----	----

## Unit 48

Bow	Sep. 1-14	ELK-2-372	S	80	ES
-----	-----------	-----------	---	----	----

Bow	Sep. 15-24	ELK-2-373	HD	80	ES
-----	------------	-----------	----	----	----

Muzzle	Oct. 5-9	ELK-3-374	S	60	MB
--------	----------	-----------	---	----	----

Any Legal	Oct. 12-16	ELK-1-375	S	75	MB
-----------	------------	-----------	---	----	----

Any Legal	Oct. 19-23	ELK-1-376	S	64	MB
-----------	------------	-----------	---	----	----

Any Legal - NM Resident Only	Nov. 9-13	ELK-1-377	S	50	A
------------------------------	-----------	-----------	---	----	---

Any Legal - NM Resident Only	Dec. 7-11	ELK-1-378	S	54	A
------------------------------	-----------	-----------	---	----	---

## Unit 49

Bow	Sep. 1-14	ELK-2-379	HD	60	ES
-----	-----------	-----------	----	----	----

Bow	Sep. 15-24	ELK-2-380	HD	59	ES
-----	------------	-----------	----	----	----

Any Legal	Oct. 5-9	ELK-1-381	S	77	MB
-----------	----------	-----------	---	----	----

Any Legal	Oct. 12-16	ELK-1-382	S	76	MB
-----------	------------	-----------	---	----	----

Any Legal - NM Resident Only	Nov. 2-6	ELK-1-383	S	77	A
------------------------------	----------	-----------	---	----	---

Any Legal - NM Resident Only	Nov. 9-13	ELK-1-384	S	77	A
------------------------------	-----------	-----------	---	----	---

**Unit 50**

Bow	Sep. 1-14	ELK-2-187	S	60	ES
Bow	Sep. 15-24	ELK-2-188	S	55	ES
Any Legal	Oct. 5-9	ELK-1-189	S	120	MB
Any Legal	Oct. 12-16	ELK-1-190	S	125	MB
Any Legal - NM Resident Only	Nov. 2-6	ELK-1-191	S	42	A
Any Legal - NM Resident Only	Nov. 16-20	ELK-1-192	S	45	A

**Unit 51**

Bow	Sep. 1-14	ELK-2-193	HD	180	ES
Bow	Sep. 15-24	ELK-2-194	HD	180	ES
Muzzle	Dec. 7-11	ELK-3-201	S	145	ES
Any Legal	Oct. 5-9	ELK-1-195	HD	220	MB
Any Legal	Oct. 12-16	ELK-1-196	HD	220	MB
Any Legal	Oct. 19-23	ELK-1-197	HD	220	MB
Any Legal - NM Resident Only	Nov. 2-6	ELK-1-198	S	251	A
Any Legal - NM Resident Only	Nov. 9-13	ELK-1-199	S	251	A
Any Legal - NM Resident Only	Nov. 16-20	ELK-1-200	S	252	A

**Unit 52**

Bow	Sep. 1-14	ELK-2-202	HD	230	ES
Bow	Sep. 15-24	ELK-2-203	HD	230	ES
Muzzle - Mobility Impaired Only	Oct. 5-9	ELK-3-204	S	50	MB

Muzzle	Oct. 5-9	ELK-3-205	HD	120	MB
Muzzle - NM Resident Only	Oct. 5-9	ELK-3-206	S	50	A
Any Legal	Oct. 12-16	ELK-1-207	HD	230	MB
Any Legal	Oct. 19-23	ELK-1-208	S	230	MB
Any Legal - NM Resident Only / Youth Only	Nov. 9-13	ELK-1-209	S	80	A
Any Legal - NM Resident Only / Mobility Impaired Only	Nov. 16-20	ELK-1-210	S	56	A
Any Legal - NM Resident Only	Nov. 16-20	ELK-1-211	S	73	A
Any Legal - NM Resident Only	Dec. 7-11	ELK-1-212	S	115	A

## Unit 53

Bow	Sep. 1-14	ELK-2-385	S	65	ES
Bow	Sep. 15-24	ELK-2-386	HD	60	ES
Muzzle - Excluding Cerro Portion	Oct. 5-9	ELK-3-387	HD	50	ES
Any Legal - Excluding Cerro Portion	Oct. 12-16	ELK-1-388	S	80	MB
Any Legal - Excluding Cerro Portion	Oct. 19-23	ELK-1-389	S	131	MB
Any Legal - Excluding Cerro Portion / NM Resident Only	Nov. 9-13	ELK-1-390	S	94	A
Any Legal - Excluding Cerro Portion / NM Resident Only	Nov. 16-20	ELK-1-391	S	94	A

## Unit 54, 55 Colin Neblett WMA Only (NM Residents Only)

Bow	Sep. 1-14	ELK-2-425	S	10	ES
Bow	Sep. 15-24	ELK-2-426	S	10	ES
Muzzle	Oct. 5-9	ELK-3-427	S	20	MB
Any Legal	Oct. 12-16	ELK-1-428	S	20	MB
Any Legal	Oct. 19-23	ELK-1-429	S	20	MB
Any Legal	Nov. 2-6	ELK-1-430	S	20	A

**Unit 55A ES Barker WMA Only (NM Residents Only)**

Bow	Sep. 1-14	ELK-2-431	S	5	ES
Bow	Sep. 15-24	ELK-2-432	S	5	ES
Any Legal	Oct. 5-9	ELK-1-433	S	10	MB

**Unit 55A Urraca WMA Only (NM Residents Only)**

Bow	Sep. 1-14	ELK-2-434	S	5	ES
Bow	Sep. 15-24	ELK-2-435	S	5	ES
Muzzle	Oct. 5-9	ELK-3-436	S	10	MB
Any Legal	Oct. 12-16	ELK-1-437	S	10	MB
Any Legal	Nov. 2-6	ELK-1-438	S	10	MB
Any Legal	Nov. 9-13	ELK-1-439	S	15	A
Any Legal	Nov. 23-27	ELK-1-440	S	15	A

**Unit 55A (Valle Vidal Only, Once-in-a-Lifetime)**

Bow	Sep. 1-14	ELK-2-441	Q/HD	25	ES
Bow	Sep. 15-24	ELK-2-442	Q/HD	25	ES
Muzzle	Oct. 5-9	ELK-3-443	Q/HD	20	MB
Any Legal	Oct. 12-16	ELK-1-444	Q/HD	35	MB
Any Legal	Oct. 19-23	ELK-1-445	Q	30	MB
Any Legal - Youth Only	Oct. 26-30	ELK-1-446	Q/HD	20	MB
Any Legal - NM Resident Only / Youth Only	Nov. 2-6	ELK-1-447	Q	30	A
Any Legal - NM Resident Only	Nov. 9-13	ELK-1-448	Q	30	A
Any Legal - NM Resident Only	Nov. 16-20	ELK-1-449	Q	30	A

**Unit 56**

Bow	Sep. 1-14	ELK-2-414	S	5	ES
Bow	Sep. 15-24	ELK-2-415	S	5	ES
Any Legal	Oct. 1-5	ELK-1-416	S	10	MB
Any Legal - NM Resident Only	Oct. 12-16	ELK-1-417	S	10	A

## Unit 57 (Sugarite Canyon State Park Only)

Bow	Sep. 1-14	ELK-2-418	S	3	ES
Bow	Sep. 15-24	ELK-2-419	S	2	ES

## Units 57, 58 (Excluding Sugarite Canyon State Park)

Bow	Sep. 1-14	ELK-2-420	S	5	ES
Bow	Sep. 15-24	ELK-2-421	S	5	ES
Any Legal	Oct. 1-5	ELK-1-422	S	5	MB
Any Legal	Oct. 12-16	ELK-1-423	S	10	MB
Any Legal - NM Resident Only	Dec. 14-18	ELK-1-424	S	10	A



*NMDGF photo*

# Youth Encouragement Hunts

Licenses, applications, harvest reporting and general information: **1-888-248-6866**

## Youth Encouragement Elk Hunts: Online Purchase Only

Only eligible resident youth hunters who have submitted a valid application for a deer, elk, pronghorn, ibex, oryx, Barbary sheep or bighorn sheep draw hunt in the current license year and were unsuccessful in drawing any license for these species will be eligible to purchase a youth encouragement elk license during the first 14 days of availability on the NMDGF website. Licenses remaining after 14 days shall be available to any youth hunter eligible to purchase an elk license, whether they applied for draw hunts or not.

Hunts will only be offered online on a first-come, first-served basis. Hunts will be available online until 14 days before each hunt start date. **PLEASE NOTE:** rejected applicants are ineligible. For more information call the NMDGF Information Center: **1-888-248-6866**.

## Youth Encouragement Elk Seasons

The number of licenses available for these hunts may be adjusted based on changes in population levels and harvest rates. License fee: \$58 resident, \$338 non-resident.

	Hunt Dates	Hunt Code	Fee Type	Licenses	Bag Limit
<b>Unit 5B</b>					
Any Legal - Youth Only	Nov. 30-Dec.4	ELK-1-100	S	20	A
<b>Unit 6A</b>					
Any Legal - Youth Only	Nov. 30-Dec.4	ELK-1-101	S	50	A
Any Legal - Youth Only	Dec. 26-30	ELK-1-102	S	50	A
<b>Unit 6C</b>					
Any Legal - Youth Only	Nov. 30-Dec.4	ELK-1-103	S	50	A
Any Legal - Youth Only	Dec. 26-30	ELK-1-104	S	50	A
<b>Unit 10</b>					
Any Legal - Youth Only	Nov. 30-Dec.4	ELK-1-105	S	35	A
<b>Unit 13</b>					
Muzzle - Youth Only	Nov. 30-Dec.4	ELK-3-106	S	60	A
Muzzle - Youth Only	Dec. 26-30	ELK-3-107	S	60	A



# Youth Encouragement Hunts

Licenses, applications, harvest reporting and general information: [www.wildlife.state.nm.us](http://www.wildlife.state.nm.us)

## Unit 15

Muzzle - Youth Only	Nov. 30-Dec.4	ELK-3-108	S	75	A
Muzzle - Youth Only	Dec. 26-30	ELK-3-109	S	75	A

## Unit 16A

Any Legal - Youth Only	Nov. 30-Dec.4	ELK-1-110	S	75	A
Any Legal - Youth Only	Dec. 26-30	ELK-1-111	S	75	A

## Unit 16C

Any Legal - Youth Only	Nov. 30-Dec.4	ELK-1-112	S	75	A
Any Legal - Youth Only	Dec. 26-30	ELK-1-113	S	75	A

## Unit 16D

Any Legal - Youth Only	Nov. 30-Dec.4	ELK-1-114	S	75	A
Any Legal - Youth Only	Dec. 26-30	ELK-1-115	S	75	A

## Unit 16E

Any Legal - Youth Only	Nov. 30-Dec.4	ELK-1-116	S	75	A
Any Legal - Youth Only	Dec. 26-30	ELK-1-117	S	75	A

## Unit 17

Muzzle - Youth Only	Nov. 30-Dec.4	ELK-3-118	S	60	A
Muzzle - Youth Only	Dec. 26-30	ELK-3-119	S	60	A

## Unit 34

Any Legal - Youth Only	Dec. 26-30	ELK-1-120	S	125	A
------------------------	------------	-----------	---	-----	---

## Unit 36

Any Legal - Youth Only	Nov. 30-Dec.4	ELK-1-121	S	80	A
Any Legal - Youth Only	Dec. 26-30	ELK-1-122	S	80	A

Licenses, applications, harvest reporting and general information: **1-888-248-6866**

### Unit 49

Any Legal - Youth Only	Nov. 30-Dec.4	ELK-1-123	S	50	A
------------------------	---------------	-----------	---	----	---

### Unit 51

Any Legal - Youth Only	Nov. 30-Dec.4	ELK-1-124	S	105	A
------------------------	---------------	-----------	---	-----	---

Any Legal - Youth Only	Dec. 26-30	ELK-1-125	S	105	A
------------------------	------------	-----------	---	-----	---

### Unit 52

Any Legal - Youth Only	Nov. 30-Dec.4	ELK-1-126	S	50	A
------------------------	---------------	-----------	---	----	---

### Unit 53

Any Legal - Youth Only	Nov. 30-Dec.4	ELK-1-127	S	60	A
------------------------	---------------	-----------	---	----	---

Any Legal - Youth Only	Dec. 26-30	ELK-1-128	S	60	A
------------------------	------------	-----------	---	----	---



## New Mexico Department of Game and Fish

*Conserving New Mexico's Wildlife for Future Generations*

**Make memories that  
will last a lifetime.**

### Mentor-Youth Hunting Program

[www.wildlife.state.nm.us/education/  
hunter-education](http://www.wildlife.state.nm.us/education/hunter-education)

**505-222-4731**