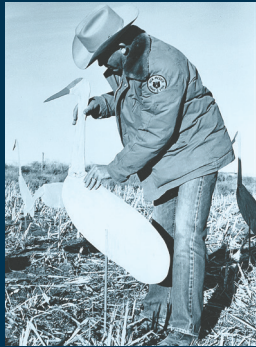




CONSERVING NEW MEXICO'S  
WILDLIFE SINCE 1903



New Mexico Department of Game and Fish

**2024–2025 New Mexico**

# **MIGRATORY GAME BIRD SUPPLEMENT**

White-winged dove, American coot, band-tailed pigeon, gallinules,  
snipe, ducks, geese, sandhill crane, sora and Virginia rail

**wildlife.dgf.nm.gov**

*Conserving New Mexico's Wildlife for Future Generations*



## Our Mission

To conserve, regulate, propagate and protect the wildlife and fish within the state of New Mexico, using a flexible management system that ensures sustainable use for public food supply, recreation and safety—and to provide for off-highway motor vehicle recreation that recognizes cultural, historic and resource values while ensuring public safety.

## New Mexico State Game Commissioners

Commissioner email addresses available online: [www.wildlife.dgf.nm.gov](http://www.wildlife.dgf.nm.gov)

- Richard Stump, Chair, Santa Fe
- Sharon Salazar Hickey, Vice Chair, Santa Fe
- Fernando Clemente, Jr., Sunland Park
- Gregg Fulfer, Jal
- Edward T. Garcia, Los Ranchos
- Tirzio J. Lopez, Cebolla
- Dr. Sabrina Pack, Silver City

## New Mexico Department of Game and Fish

One Wildlife Way, Santa Fe, NM 87507 . . . . . 1-888-248-6866  
 Michael B. Sloane, Director

## Regional Offices

- Northwest Office:** 7816 Alamo Rd. NW, Albuquerque, NM 87120 . . . 505-222-4700
- Southwest Office:** 2715 Northrise Drive, Las Cruces, NM 88011 . . . 575-532-2100
- Northeast Office:** 215 York Canyon Road, Raton, NM 87740. . . . . 575-445-2311  
P.O. Box 1145, Raton, NM 87740
- Southeast Office:** 1615 West College Boulevard, . . . . . 575-624-6135  
Roswell, NM 88201

## Conservation Officer Contact Information

<http://www.wildlife.dgf.nm.gov/enforcement/law-enforcement-contact-information/>

## Online Licenses, Applications and Harvest Reporting

<https://onlinesales.wildlife.dgf.nm.gov>

## Important Telephone Numbers

- General Information, License Sales and Harvest Reporting . . . . . 1-888-248-6866
- Bear and Cougar Zone Closure and Harvest Hotline. . . . . 1-877-950-5466
- Hunter Education Program Information . . . . . 505-222-4731
- Off-Highway Vehicle (OHV) Information . . . . . 505-222-4728
- Operation Game Thief (OGT)** . . . . . 1-800-432-4263
- 24-hour Depredation Hotline . . . . . 1-888-727-4883

The *2024-25 New Mexico Migratory Game Bird Supplement* includes season dates for migratory game birds. More information about migratory game birds can be found in the *2024-25 New Mexico Hunting Rules & Information* book, available in print and online.

Cover: *New Mexico Department of Game and Fish photos*



# Important Reminders

Licenses, applications, harvest reporting and general information: [wildlife.dgf.nm.gov](http://wildlife.dgf.nm.gov)

## Sandhill Crane Application Deadline: August 14, 2024

Deadline for all special permit sandhill crane hunts is August 14, 2024 before 5 p.m. MDT. No more than four persons may apply per application and no more than two persons may apply per youth-only hunt application.

## Migratory Game Bird Species Include:

White-winged and mourning doves, American coot, band-tailed pigeon, gallinules, snipe, ducks, geese, sandhill crane, sora and Virginia rail. Hunting swans in New Mexico is not allowed.

## Print Your Own Licenses and Permits

NMDGF game-hunting licenses, Eastern sandhill crane permits, light goose conservation order permits and band-tailed pigeon permits are available online and may be printed on standard paper. Licenses and permits will no longer be mailed unless requested by telephone:

**1-888-248-6866.**

## Information Center Assistance: 1-888-248-6866

The NMDGF Information Center is open year-round Monday–Friday, 8 a.m.–5 p.m. (except holidays) to answer questions and assist with license needs or harvest reports.

## Shooting Hours

**Migratory Game Birds:** ½ hour before sunrise to sunset, unless otherwise noted.

**Bottomless Lakes Overflow:** ½ hour before sunrise to 1 p.m.

**Wildlife Management Areas (Bernardo, Jackson Lake, La Joya and W.S. Huey):** ½ hour before sunrise to 1 p.m. **Exceptions:** Bernardo Unit D will be open for handicap accessible hunting during the Light Goose Conservation Order on Monday, Wednesday, and Saturday ½ hour before sunrise to ½ hour after sunset. Bernardo Ponds Unit will be open during the Light Goose Conservation Order on Monday, Wednesday and Saturday ½ hour before sunrise to ½ hour after sunset. Shooting hours for the September Teal Season on the Bernardo and La Joya areas are from ½ hour before sunrise to sunset.

**Migratory game bird hunting on all other WMAs:** ½ hour before sunrise to sunset.

## Free Online Maps and Mobile app

Maps are available at [wildlife.dgf.nm.gov](http://wildlife.dgf.nm.gov) for La Joya North and South Ponds, the Bernardo hunt areas, sandhill crane check stations and hunt boundaries and designated areas in the lower Rio Grande Valley.

BLM-New Mexico has partnered with the NMDGF to provide free maps of big game hunting units and recreational areas on public lands.

Download the CarryMap app to your mobile device, then download New Mexico maps at:

<https://www.blm.gov/maps/frequently-requested/new-mexico/hunting-maps>.



## What's New

**CENTRAL FLYWAY SCAUP LIMIT** will decrease from 3 to 1 according to U.S. Fish and Wildlife Service regulations

### BERNARDO UNIT D CHANGES:

Bernardo Unit D is now open to handicap accessible waterfowl hunting during the regular season on Monday, Wednesday, and Saturday ½ hour before sunrise to 1pm. Bernardo Unit D will also be open for handicap accessible hunting during the Light Goose Conservation Order on Monday, Wednesday, and Saturday ½ hour before sunrise to ½ hour after sunset.

**BERNARDO PONDS UNIT:** This unit will be open during the Light Goose Conservation Order on Monday, Wednesday and Saturday ½ hour before sunrise to ½ hour after sunset.

# Migratory Game Birds

Licenses, applications, harvest reporting and general information: [wildlife.dgf.nm.gov](http://wildlife.dgf.nm.gov)

## DOVE AND BAND-TAILED PIGEON SEASONS

### Eurasian collared-dove

Eurasian collared-dove are classified as upland game. Eurasian collared-dove hunting is open on WMAs during: 1) seasons for mourning and white-winged dove; and 2) quail, squirrel, and dusky grouse seasons

### Mourning and White-winged Dove

**North Zone:** North of I-40 from the New Mexico/Arizona border to U.S. Hwy. 54 at Tucumcari; U.S. Hwy. 54 from Tucumcari to the New Mexico/Texas border.

**South Zone:** South of I-40 from the New Mexico/Arizona border to U.S. Hwy. 54 at Tucumcari; U.S. Hwy. 54 from Tucumcari to the New Mexico/Texas border.

Hunt Area	Season Dates	Bag / Possession
North Zone	Sept. 1 – Nov. 29	15 singly or aggregate / 45 in possession
South Zone	Sept. 1 – Oct. 28 and Dec. 1 – Jan. 1 '25	15 singly or aggregate / 45 in possession

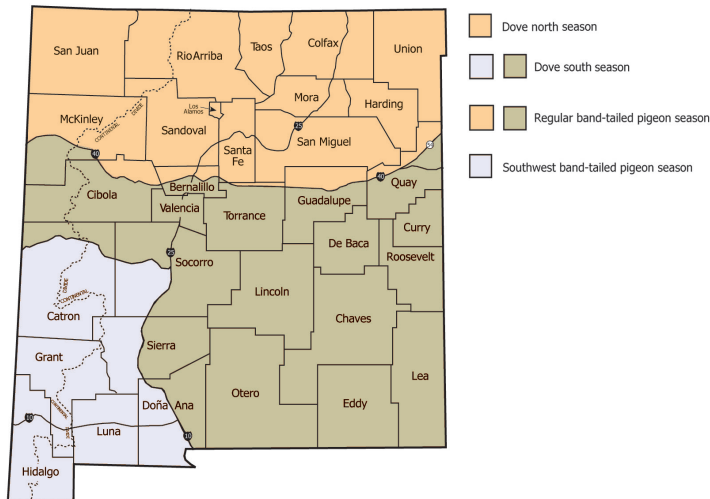
### Band-tailed Pigeon

A free Band-tailed Pigeon Permit is required.

Southwest Season: South of U.S. Hwy. 60 and west of I-25. Regular Season: Remainder of the state outside the Southwest Season boundary.

Hunt Area	Season Dates	Bag / Possession
Regular Season	Sept. 1–14	2 per day / 6 in possession
Southwest Season	Oct. 1–14	2 per day / 6 in possession

## Dove and Band-tailed Pigeon Hunt Areas



### State Game Commission WMAs

State Game Commission owned or managed areas listed below are open to migratory game bird hunting. No hunting is allowed outside of open seasons or for species not listed. Vehicles are restricted to designated areas. Shooting hours are listed on page 3.

#### Days Open to Migratory Game Bird Hunting (• = Days Open)

Wildlife Management Areas	Species	Sun.	Mon.	Tue.	Wed.	Thr.	Fri.	Sat.
W.S. Huey	Dove		•		•			•
All Prairie Chicken Areas, Sandhill Prairie Conservation Area, and River Ranch	Dove	•	•	•	•	•	•	•
Sargent, Humphries, Rio Chama, Urraca, Colin Neblett, Water Canyon, Marquez/LBar and E.S. Barker	Dove, Band-tailed pigeon	•	•	•	•	•	•	•
Bernardo (South) South of U.S. 60 in Bernardo will be open for September Teal Season and youth waterfowl days	September Teal Season	•	•	•	•	•	•	•
La Joya	September Teal Season	•	•	•	•	•	•	•
La Joya (east of railroad tracks)	Dove, Group I	•	•	•	•	•	•	•
Bernardo (The Quagmire)	Group I	•		•		•		•
Bernardo (Ponds) Open during Light Goose Conservation Order ½ hour before sunrise to ½ hour after sunset. Open for Group I species during applicable seasons from 1/2 hour before sunrise to 1pm	Group I, Light Goose C.O.		•		•			•
Bernardo (Youth Unit)	Group I		•		•			•
La Joya (north portion) That portion north of the main east/west entrance road and west of the railroad tracks.	Group I		•		•			•
La Joya (south portion) That portion south of the main east/west entrance road and west of the railroad tracks.	Group I*	•		•		•		•
Jackson Lake (west of NM 170)	Group II*		•		•			•
Charette Lake, Hammond Tract, McAllister Lake, Retherford Tract, Socorro-Escondida, Tucumcari, and Wagon Mound	All migratory birds	•	•	•	•	•	•	•
Bernardo (Unit D) Open for Group I species during applicable seasons for handicap accessible from 1/2 hour before sunrise to 1pm. Open during Light Goose Conservation Order for handicap accessible ½ hour before sunrise to ½ hour after sunset.	Group I, Light Goose C.O.		•		•			•

\* **Group I:** Includes ducks, light geese, dark geese (as part of the MRGV dark goose season), Virginia rail, sora, gallinules, American coot and snipe.

\* **Group II:** Includes ducks, all geese, Virginia rail, sora, gallinules, American coot and snipe.

## SANDHILL CRANE SEASONS

### Applying for Sandhill Crane Draw Hunts

Applications may be made online or by phone. The application deadline is August 16, 2024. No more than four persons may apply per application and no more than two persons per youth-only hunt application. A federal Duck Stamp is not required to hunt sandhill cranes. Cranes are often found on private property. To access private property, hunters must obtain and possess prior written permission.

### Eastern Hunt (Eastern)

Chaves, Curry, De Baca, Eddy, Lea, Quay and Roosevelt counties: All Eastern sandhill crane hunters must possess an appropriate license, plus a free Eastern sandhill crane permit. Permits are available online and at all license vendors.

### Southwest Hunt (SW)

**Parts of Sierra, Doña Ana, Luna, Grant and Hidalgo counties:** Bounded on the south by the New Mexico/Mexico border; Bounded on the west by the New Mexico / Arizona border north to I-10; Bounded on the north by I-10 east to US 180, north to NM 26, east to NM 27, north to NM 152 and east to I-25; Bounded on the east by I-25 south to I-10, west to the Luna county line and south to the New Mexico/Mexico border.

Hunters who draw special Southwest Crane Permits must return the Harvest Questionnaire and Bill Measurement Card to NMDGF no later than five days after the end of the permitted hunt dates.

### Estancia Valley Hunt (EV)

**Portions of Bernalillo, Santa Fe and Torrance counties:** Bounded on the west by NM 55 starting at Mountainair and north to NM 337, north to NM 14 and north to I-25; Bounded on the north by I-25 east to US 285; Bounded on the east by US 285 south to US 60; Bounded on the south by US 60 from US 285 west to NM 55 at Mountainair. Hunters who draw Special Estancia Valley Crane Permits must return the Harvest Questionnaire and Bill Measurement Card to NMDGF no later than five days after hunting.

### Middle Rio Grande Valley (MRGV) Hunts and Resident Youth-only Hunt

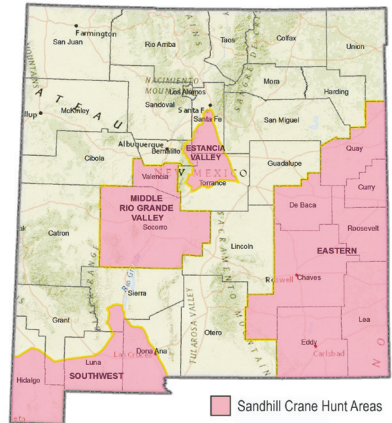
Hunters who draw Special MRGV Crane Permits must: 1) Check all cranes harvested at the designated check station; and 2) File a harvest report no later than five days after the end of the permitted hunt dates via the Department's online licensing system or by calling 888-248-6866. Sandhill crane check station dates in the Middle Rio Grande Valley: Nov. 16–17; Nov. 30–Dec. 1; Dec. 14–15; Jan. 4–5, 2025; Jan. 11–12, 2025. Harvest Questionnaires and hunt letters are available online:

<http://www.wildlife.dgf.nm.gov/hunting/information-by-animal/migratory-bird/>

**Regular draw hunts:** Valencia and Socorro counties only. Bernardo, La Joya and Casa Colorada WMAs are closed to crane hunting during regular draw hunts.

**Resident Youth-only Hunt:** Youth hunters will be assigned to hunt on either Bernardo or Casa Colorada WMAs.

### Sandhill Crane Hunt Areas



*Migratory Game Bird Seasons—continued.*

**Sandhill Crane Hunts**

Bag limit is 3 per day and 6 in possession. Up to four hunters may apply per application.

Hunt Area	Hunt Code	Season Dates	Number of Permits
Eastern Hunt	N/A; Free permit required	Oct. 26– Jan. 23, 2025	Unlimited
Estancia Valley Hunt	SCR-0-101	Nov. 2–5 and Nov. 7–10	65
MRGV Hunts	SCR-0-102	Nov. 16–17	85
	SCR-0-103	Nov. 30–Dec. 1	85
	SCR-0-104	Dec. 14–15	85
	SCR-0-105	Jan. 4–5, '25	85
	SCR-0-106	Jan. 11–12, '25	85
Southwestern	SCR-0-108	Nov. 2–Nov. 10	75
	SCR-0-109	Jan. 4–5, '25	75

**Youth Sandhill Crane Hunt (residents only)**

Bag and possession limits are 3. Up to two hunters may apply per application.

MRGV Youth-only	SCR-0-107	Nov. 23	24
-----------------	-----------	---------	----

**CENTRAL FLYWAY SEASONS**

Possession limits are 3 times the daily bag limit for all species, unless otherwise noted.

**North Zone**

(East of the Continental Divide and north of I-40 and U.S. Hwy. 54 at Tucumcari)

Species	Season Dates	Bag / Possession
Ducks	Oct. 12– Jan. 15, '25	6 ducks singly or in aggregate <sup>1</sup> / 3 times daily bag
American Coot	Oct. 12– Jan. 15, '25	15 daily / 45 in possession

<sup>(1)</sup> Aggregate may consist of no more than: 5 mallards, only 2 of which may be female (Mexican ducks are considered part of the mallard bag limit); 1 scaup; 3 wood ducks; 2 redhead; 2 hooded merganser; 1 pintail; and 2 canvasback.

**South Zone**

(East of the Continental Divide and south of I-40 and U.S. Hwy. 54 at Tucumcari)

Ducks and American Coot	Oct. 28– Jan. 31 '25	Same as North Zone / 3 times daily bag
-------------------------	-------------------------	--

**North and South Zones**

(North Zone and South Zone boundaries above)

September Teal Season	Sept. 14–22	6 singly or in aggregate / 18 in possession (blue-winged, cinnamon, green-winged teal)
Gallinules	Sept. 14– Nov. 22	1 daily / 3 in possession
Sora and Virginia Rail	Sept. 14– Nov. 22	10 singly or in aggregate / 20 in possession
Snipe	Oct. 12 – Jan. 26 '25	8 daily / 24 in possession

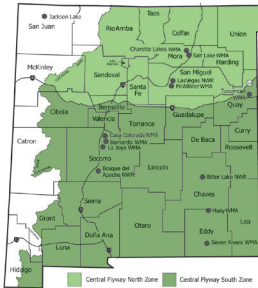
*Continued on page 8.*

2024–2025

## Central Flyway Seasons: North and South Zones—continued.

### North and South Zones (cont.)

(North Zone and South Zone boundaries p. 7)



**Central Flyway**

Species	Season Dates	Bag / Possession
Dark Goose <sup>(2)</sup>	Oct. 17– Jan. 31 '25	5 daily / 15 in possession (Canada and white-fronted goose)

<sup>(2)</sup> MRGV (Valencia, Socorro and Sierra counties) is closed to dark goose hunting in the regular season.

MRGV Dark Goose <sup>(3)</sup>	Dec. 19– Jan. 31, '25	2 per day / 2 per season (Canada and white-fronted goose)
--------------------------------	--------------------------	--

<sup>(3)</sup> MRGV includes Valencia, Socorro and Sierra counties.

Light Goose	Oct. 17– Jan. 31 '25	50 daily / No possession limit (snow and Ross's goose)
-------------	-------------------------	---

Light Goose Conservation Order	Feb. 1– Mar. 10 '25	No bag limit / No possession limit <sup>(4)</sup> (snow and Ross's goose)
--------------------------------	------------------------	---

<sup>(4)</sup> Free permit required (page 17). Approved tools include electronic calls and unplugged shotguns. Shooting until ½ hour after sunset, except on Wildlife Management Areas (WMAs). Bernardo Unit D will be open for handicap accessible hunting during the Light Goose Conservation Order on Monday, Wednesday, and Saturday ½ hour before sunrise to ½ hour after sunset. Bernardo Ponds Unit will be open during the Light Goose Conservation Order on Monday, Wednesday, and Saturday ½ hour before sunrise to ½ hour after sunset.

## PACIFIC FLYWAY SEASONS

Possession limits are 3 times the daily bag limit for all species, unless otherwise noted.

### North Zone

(West of the Continental Divide and north of I-40)

Species	Season Dates	Bag / Possession
Goose	Sept. 21– Oct. 6; Nov. 2– Jan. 31, '25	5 Canada and brant / 15 in possession, 10 white-fronted/ 30 in possession, 20 light / 60 in possession

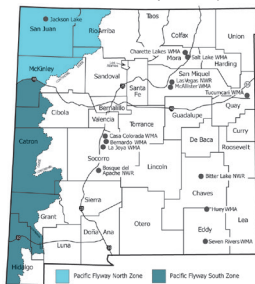
### South Zone

(West of the Continental Divide and south of I-40)

Goose	Oct. 17– Jan. 31, '25	5 Canada and brant / 15 in possession, 10 white-fronted/ 30 in possession, 20 light / 60 in possession
-------	--------------------------	--

### North and South Zones

(North Zone and South Zone boundaries, see map below)



**Pacific Flyway**

Ducks	Oct. 19– Jan. 31, '25	7 ducks in aggregate <sup>(1)</sup> / 3 times daily bag
-------	--------------------------	---

<sup>(1)</sup> Aggregate may include no more than 2 female mallards, 2 redheads, 1 pintail, 2 canvasback.

Scaup	Oct. 19 – Jan. 12, '25	2 daily <sup>(2)</sup> / 6 possession
-------	---------------------------	---------------------------------------

<sup>(2)</sup> Included in the aggregate bag for ducks.

American Coot and Gallinules	Oct. 19– Jan. 31, '25	25 singly or in aggregate / 75 in possession
------------------------------	--------------------------	--

Snipe	Oct. 17– Jan. 31, '25	8 daily / 24 in possession
-------	--------------------------	----------------------------

Sora and Virginia Rail	Sept. 14 – Nov. 22	25 singly or in aggregate / 75 in possession
------------------------	-----------------------	--



## YOUTH WATERFOWL SEASONS

### Federal Youth Waterfowl Days

(Residents and Nonresidents)

Hunt Area	Zone	Season Dates	Bag / Possession
Central Flyway	North	Oct. 5–6	See page 7
	South	Oct. 26–27	
Pacific Flyway	North and South	Oct. 12–13	See page 8

Youth hunters must be 17 years of age or younger and fully licensed (a special hunt permit is not required). Hunters 16 years of age and older must purchase a federal Duck Stamp. An adult 18 years of age or older must accompany the youth in the field. The adult may not hunt ducks, but may if properly licensed participate in other seasons open during Youth Waterfowl Days.

The youth hunter may take only ducks, coots and gallinules in the Pacific Flyway. The youth hunter may take only ducks and coots in the Central Flyway. No other migratory game bird species may be taken, unless it is open season for these species. Bag and possession limits are the same as the regular seasons.

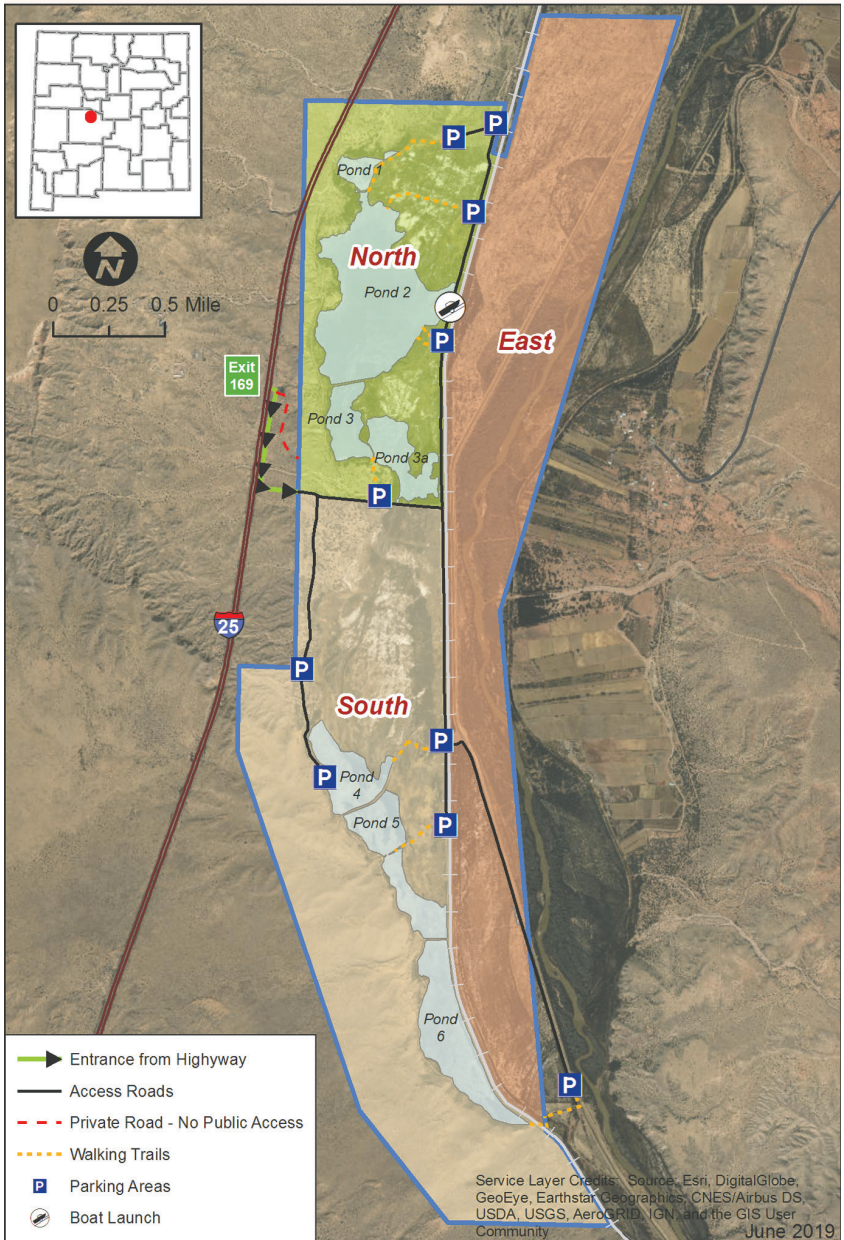
WMAs open during Youth Waterfowl Days include Bernardo, La Joya, Wagon Mound, Charette Lake, McAllister Lake and Tucumcari.

### Youth Waterfowl Hunts at Bernardo (Residents Only)

The Bernardo Youth Hunt Unit is open for waterfowl hunts for resident youth and their guests. Blind selection will be available first-come, first-served from ½ hour before sunrise to 1 p.m. Youth hunters must be accompanied by a supervising adult 18 years of age or older. Supervising adults may not hunt, but must be legally licensed. No more than four people per blind are allowed – at least half of whom must be youth hunters.

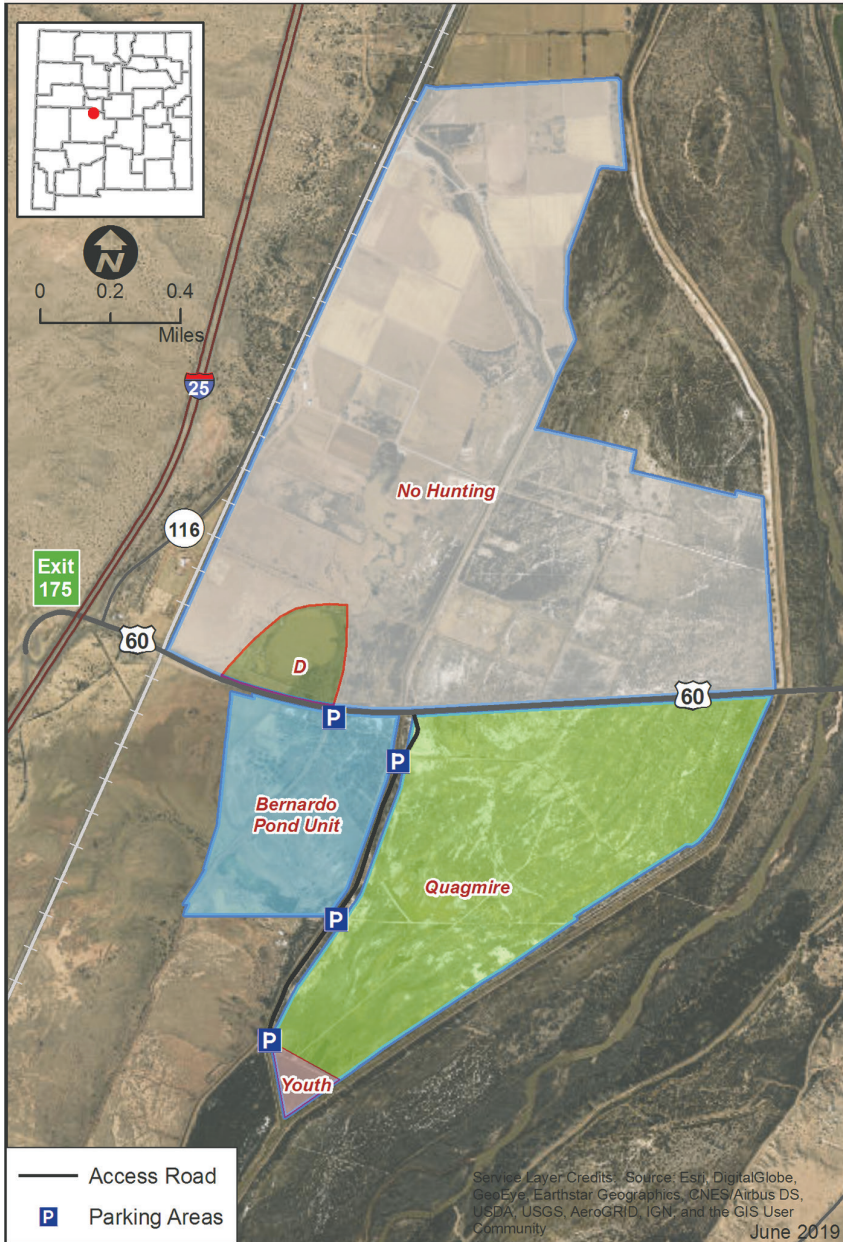
# La Joya Wildlife Management Areas

Maps of State Game Commission Lands, including La Joya WMA, are available online: <http://www.wildlife.dgf.nm.gov/conservation/state-game-commission-lands/>



# Bernardo Wildlife Management Area

Maps of State Game Commission Lands, including Bernardo WMAs, are available online: <http://www.wildlife.dgf.nm.gov/conservation/state-game-commission-lands/>



# FALCONRY MIGRATORY GAME BIRD SEASONS

White-winged and mourning doves, American coot, band-tailed pigeon, gallinules, snipe, ducks, geese, sandhill crane, sora and Virginia rail. All Wildlife Management Areas are open each day of the established falconry season. The portion of Jackson Lake east of N.M. Hwy. 170 is open to falconry-only migratory game bird hunting during established seasons.

	Area	Season Dates	Bag / Possession
<b>Dove</b>	North Zone	Sept. 1–Dec. 4, Dec. 21–Jan. 1 '25	3 singly or in aggregate / 9 in possession
	South Zone	Sept. 1–Nov. 5, Nov. 22–Jan. 1, '25	3 singly or in aggregate / 9 in possession
<b>Band-tailed Pigeon</b> Central Flyway and Pacific Flyway	North Zone	Sept. 1–14	3 singly or in aggregate / 9 in possession
	South Zone	Oct. 1–14	3 singly or in aggregate / 9 in possession
<b>Sandhill Crane</b>	Eastern <sup>(1)</sup>	Oct. 12 – Jan. 23, '25	3 singly or in aggregate / 6 in possession
	Estancia Valley <sup>(2)</sup>	Nov. 2–Dec. 31	3 singly or in aggregate / 6 in possession
<b>Ducks and American Coot</b> Central Flyway	North Zone	Sept. 14–22, Oct. 12–Jan. 15, '25	3 singly or in aggregate / 9 in possession
	South Zone	Sept. 14–22, Oct. 28–Jan. 31, '25	3 singly or in aggregate / 9 in possession
<b>Ducks and American Coot</b> Pacific Flyway	All Zones	Oct. 19–Jan. 31, '25	3 singly or in aggregate / 9 in possession
<b>Scaup</b> Pacific Flyway	All Zones	Oct. 19–Jan. 12, '25	3 singly or in aggregate / 9 in possession

<sup>(1)</sup> Eastern Sandhill Crane Permit (free) in possession is required while hunting.

<sup>(2)</sup> Falconers are requested to report hunting efforts.



*Falconry Migratory Game Bird Seasons—continued.*

	Area	Season Dates	Bag / Possession
<b>Snipe</b> Central Flyway	All Zones	Oct. 12–Jan. 26, '25	3 singly or in aggregate / 9 in possession
<b>Snipe</b> Pacific Flyway	All Zones	Oct. 17–Jan. 31, '25	3 singly or in aggregate / 9 in possession
<b>Gallinules</b> Central Flyway	All Zones	Sept. 14–Dec. 28	3 singly or in aggregate / 9 in possession
<b>Gallinules</b> Pacific Flyway	All Zones	Oct. 19– Jan. 31, '25	3 singly or in aggregate / 9 in possession
<b>Sora and Virginia Rail</b> Central Flyway	All Zones	Sept. 14–Dec. 28	3 singly or in aggregate / 9 in possession
<b>Sora and Virginia Rail</b> Pacific Flyway	All Zones	Sept. 14–Nov. 22	3 singly or in aggregate / 9 in possession
<b>Light Goose</b> Central Flyway	All Zones	Oct. 17–Jan. 31, '25	3 singly or in aggregate / 9 in possession
<b>Light Goose</b> Pacific Flyway	North Zone	Sept. 21–Oct. 6, Nov. 2–Jan. 31, '25	3 singly or in aggregate / 9 in possession
	South Zone	Oct. 17–Jan. 31, '25	3 singly or in aggregate / 9 in possession
<b>Dark Goose</b> Central Flyway	MRGV	Dec. 19–Jan. 31, '25	3 singly or in aggregate / 9 in possession
	All Zones <sup>(1)</sup>	Oct. 17–Jan. 31, '25	3 singly or in aggregate / 9 in possession
<b>Dark Goose</b> Pacific Flyway	North Zone	Sept. 21–Oct. 6, Nov. 2–Jan. 31, '25	3 singly or in aggregate / 9 in possession
	South Zone	Oct. 17–Jan. 31, '25	3 singly or in aggregate / 9 in possession

<sup>(1)</sup> Excluding MRGV.





# New Mexico Department of Game and Fish

*Conserving New Mexico's Wildlife for Future Generations*

A young woman with blonde hair, wearing a grey baseball cap, a dark hoodie, and a bright orange safety vest, stands in a field of tall, dry grass. She is holding a rifle and looking back over her shoulder towards the camera. The background shows a vast, open landscape under a cloudy sky.

**Make memories that  
will last a lifetime.**

## **Mentor-Youth Hunting Program**

[www.wildlife.dgf.nm.gov/education/hunter-education](http://www.wildlife.dgf.nm.gov/education/hunter-education)

**505-222-4731**

### **2024–2025 New Mexico Migratory Game Bird Supplement**

is published by the New Mexico Department of Game and Fish / Information and Education Division,  
One Wildlife Way, Santa Fe, NM 87507 ©2024, NMDGF photo.