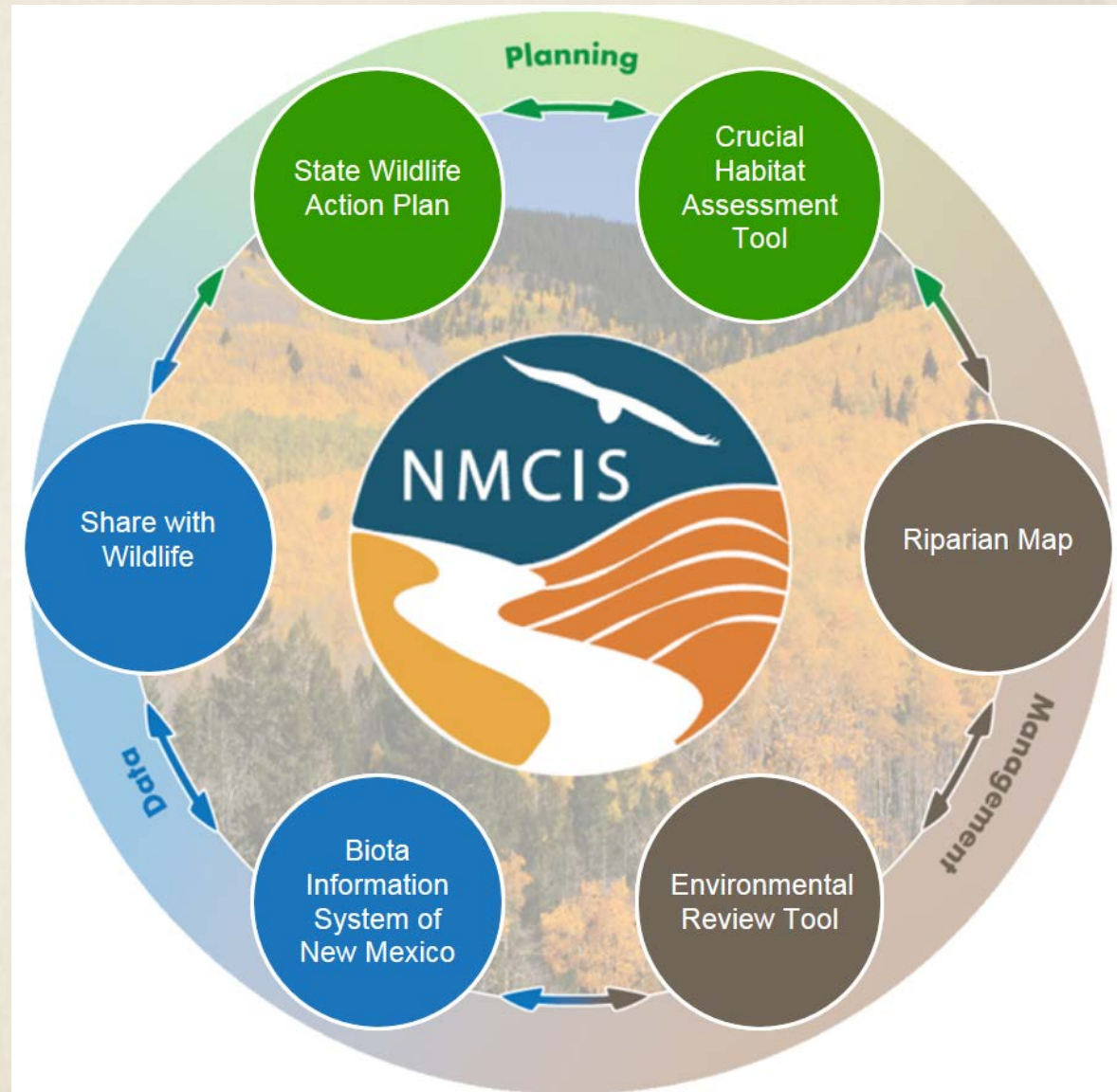


# Conservation Information System



# Overview

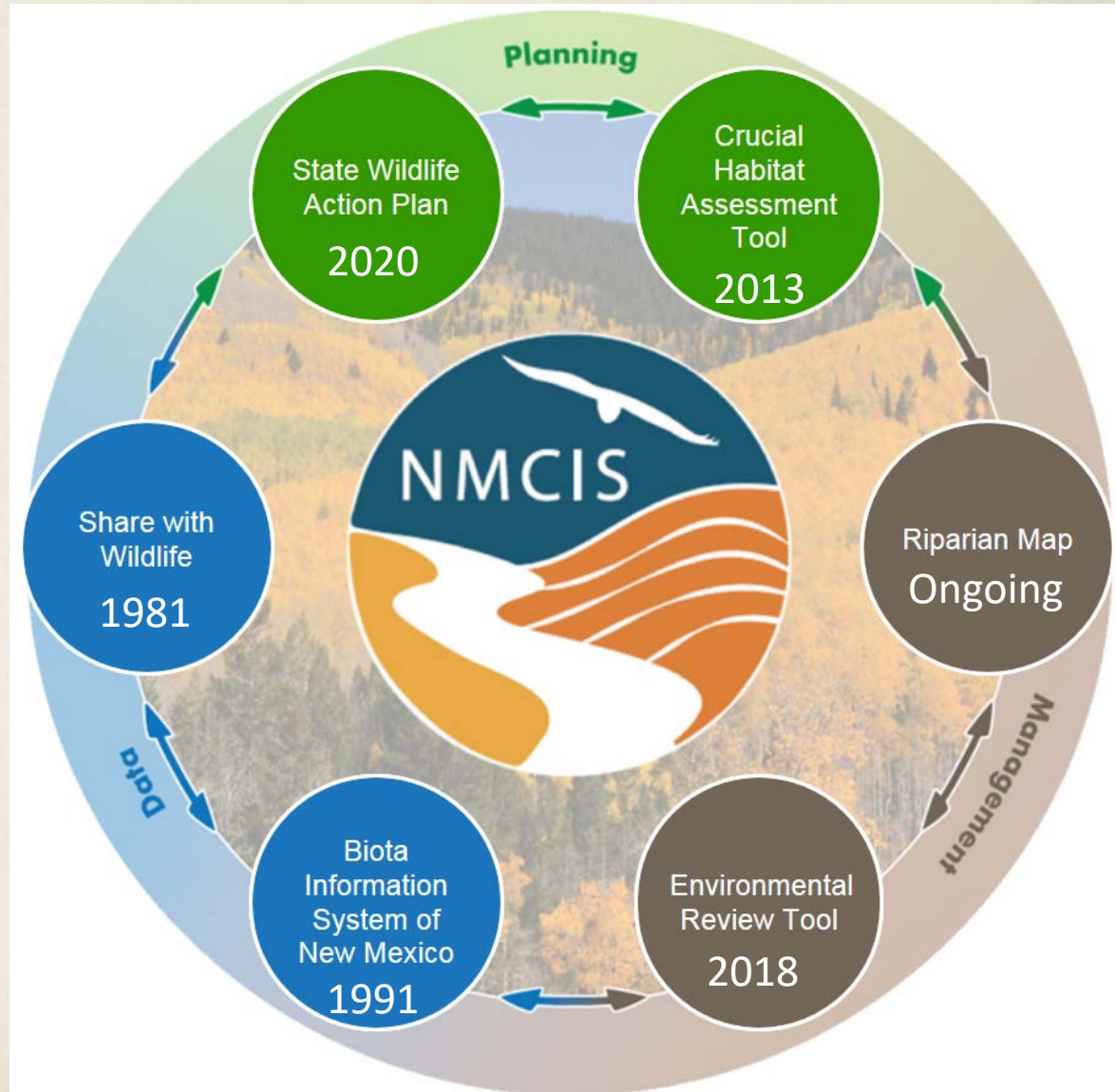
- Ecological and Environmental Planning Division (EEP) has developed and/or maintains 4 conservation-related tools, 1 statewide dataset, and 1 grant program
- These tools, dataset, and program are all interconnected
- Several inform infrastructure and other project reviews performed by EEP staff
- The Conservation Information System (CIS) was developed to help people find the Department's publicly-available information relevant to conserving New Mexico's fauna and flora

# Natural Heritage New Mexico

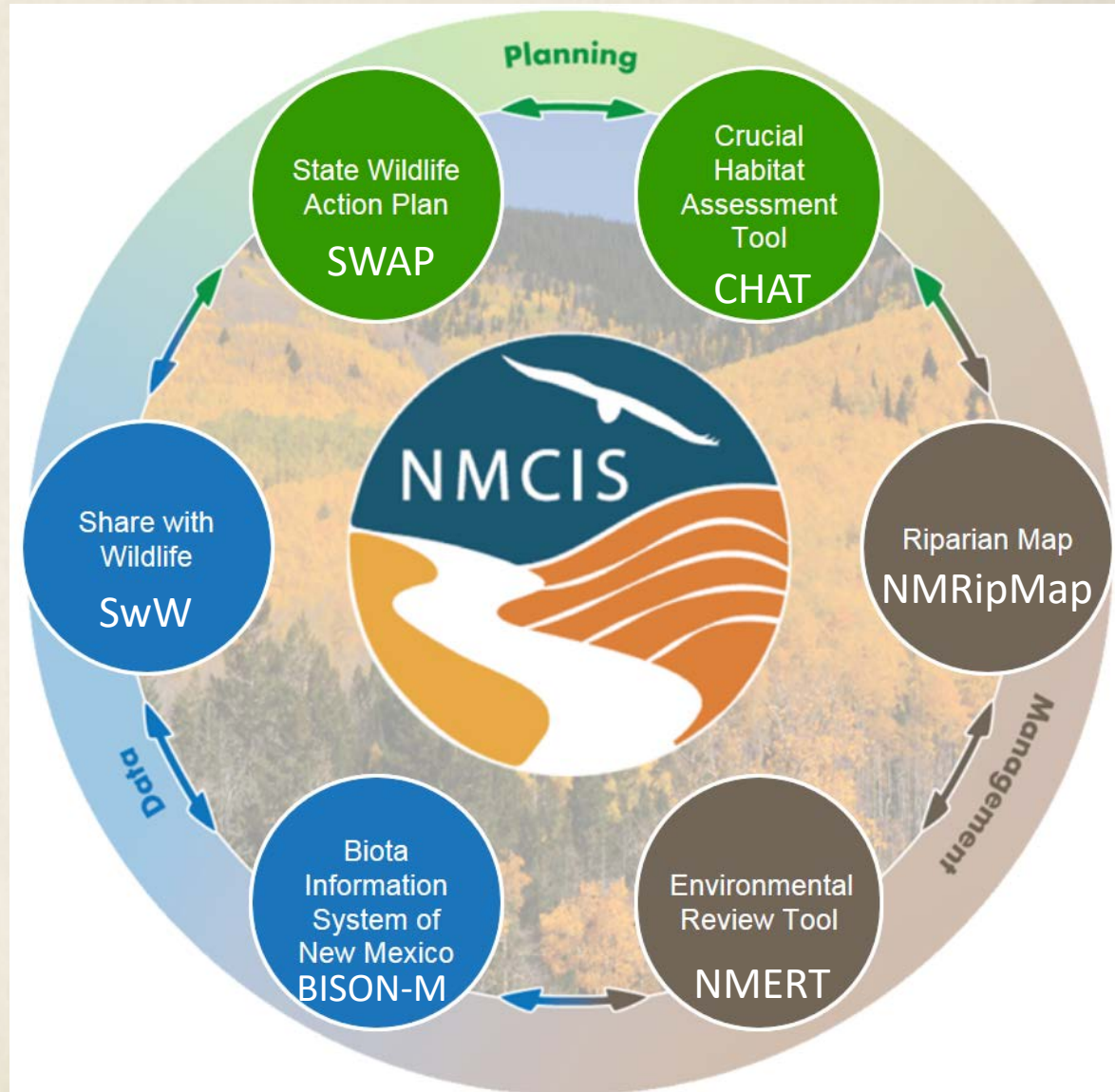
- Natural Heritage serves decision makers and members of the public in New Mexico by acquiring and distributing biodiversity conservation information
- Every state has a Natural Heritage program
- Some are housed in state wildlife agencies
- New Mexico's Natural Heritage program is a division of the Museum of Southwestern Biology at the University of New Mexico
- Important partner on 5 of the 6 CIS components



# Key CIS Components: Timeline



# Key CIS Components: Acronyms



# Share with Wildlife

- Grant program funds wildlife habitat enhancement, research, education, and rehabilitation projects
- Supported by voluntary contributions
- Focus on species without funding from other sources
- Since 2005, research and habitat projects focused on **Species of Greatest Conservation Need**
- Connections: Informs BISON-M, SWAP revision

Share with  
Wildlife  
1981



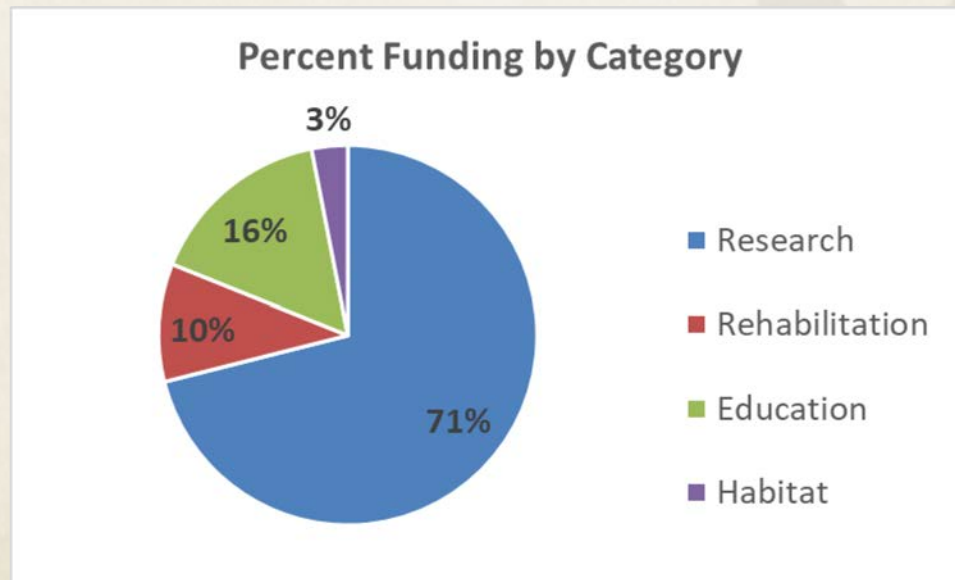
Share with Wildlife

<http://www.wildlife.state.nm.us/conservation/share-with-wildlife/>

# Share with Wildlife: Past Decade



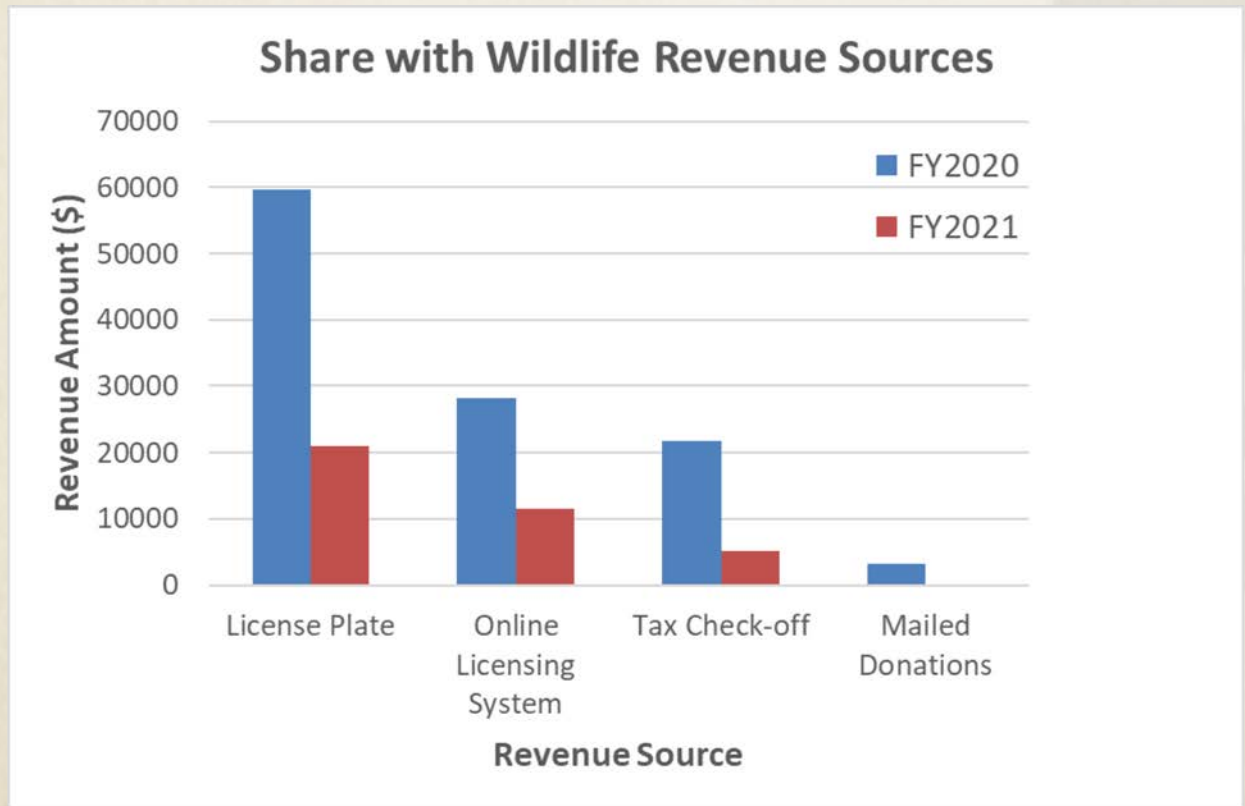
- Funded 98 projects focused on >65 species
- Average 15 projects per year (up to 24)
- ~\$1.9 million dispersed via contracts and other agreements to ~55 different project leads



# Share with Wildlife: Recent Revenue



Source	FY2020	FY2021
License Plate	\$59,600	\$21,042
Online Licensing System	\$28,110	\$11,434
Tax Check-off	\$21,811	\$5,100
Mailed Donations	\$3,288	\$50
<b>Total</b>	<b>\$112,809</b>	<b>\$37,626</b>





# Share with Wildlife: Webpage



Share with Wildlife \_\_\_\_\_

- »  **New:** As of October 19th, 2020, there is a new roadrunner Share with Wildlife license plate available through MVD. For more details, see the “**Donate Now!**” tab.
- » **New:** The list of 2021 Share with Wildlife projects is now available. Please see the “Applications-Reports” tab for further information..

[Introduction](#) | [Project Highlights](#) | [Applications - Reports](#) | [Donate Now!](#)

Share with Wildlife \_\_\_\_\_

A video player interface showing a still image of a hummingbird hovering over pink flowers. The video title is "New Mexico Game & Fish Share With Wildlife". There is a "Copy link" button in the top right corner of the player. Below the video, the text "Share with Wildlife" is displayed in a large, bold font.

**Share with Wildlife** is a New Mexico Department of Game and Fish program initiated in 1981 that depends on tax-deductible donations from the public. Its mission is to help those species that do not receive funding from any other source. The program funds four categories of wildlife projects: **research, education, habitat enhancement, and rehabilitation.** It receives much of its funding through the state income tax check-off program. It is also supported through Share with Wildlife license plate sales and direct donations. Matching federal funds maximize the program’s support of New Mexico’s wildlife. *(Video still: Broad-billed hummingbird artwork above by Hira Walker).*

<http://www.wildlife.state.nm.us/conservation/share-with-wildlife/>

# BISON-M



- Web-enabled database
- Over 6,800 species accounts
- Accounts contain information on species distribution, biology, ecology, and a list of references
- Connections: Search for SwW contracts; informs SWAP revision and NMERT reports; links to NMERT

Welcome to the Biota Information System of New Mexico (BISON-M). BISON-M was developed by New Mexico Department of Game and Fish and numerous partners. BISON-M contains species accounts for all vertebrate and many invertebrate species of wildlife that occur in New Mexico. New information is continuously being added and errors do occur. Users are encouraged to refer to the original cited source to assess the completeness, correctness, and currency of the information provided in BISON-M.



[Species Search](#)



[County Reports](#)



[Document Search](#)



[Contract Search](#)

# BISON-M: Species Search



**SPECIES SIMPLE SEARCH**

**BISON-M Species Search** ⓘ

**TAXONOMY**

Common Name  ⓘ

Scientific Name

Latin Taxon

ALL  Vertebrates  Invertebrates

Category

Account Type

Photo  ALL  Yes  No

**LEGAL STATUS**

Legal Status

Trends/Threats

**DISTRIBUTION**

State

NM County

Arizona County

Accident County

Historic County

Watershed (HUCA)

Other NM

Mountain Range

**ENVIRONMENTAL ASSOCIATION**

Life Stage

**HABITAT**

General

Macrogroup

Land Use /Cover

Ecoregions

National Wetlands

**FOOD HABITS**

Trophic

Life Stage

[View Search Summary](#)

**Check box to include field in search results. Click ⓘ to show additional, related search terms.**

Search  Print

Clear  PDF  Excel

Legal Status Report  PDF  Excel

Show Search Codes Only  No  Yes

**LIFE HISTORY**

Codes

Interaction Type

Disease

**MANAGEMENT PRACTICES**

Effects

**COMMENT SEARCH**

1 Species  Refine Search

Hide Category Summary  Show Category Summary

ID	Common Name	Scientific Name	Habitat	Documents	Photo
050705	<a href="#">Least Shrew</a> ⓘ	<i>Cryptotis parvus</i>		<a href="#">View List</a>	

# BISON-M: Species Booklet

Biota  
Information  
System of  
New Mexico  
1991

[Print Booklet](#)

## Least Shrew

[Disclaimer Policy](#)

Booklet updated 3/29/2019. Questions? Updates? Click [here](#) to let us know.  
Tip: Expand All Sections and Use Ctrl-F to search for text in booklet.

Check to Show All Sections:

[Click Blue Section Head to Show/Hide Details](#)

Jump to Section:

### Summary

Species ID	050705
Name	Least Shrew
Genus	<i>Cryptotis</i>
Species	<i>parvus</i>
Synonyms	Musarana Chica (Hispanic); North American least shrew
Category	05 Mammals
Legal Status	<ul style="list-style-type: none"><li>State NM: <a href="#">Species of Greatest Conservation Need (SGCN)</a></li><li>State NM: Threatened</li></ul>
Species Distribution	<ul style="list-style-type: none"><li>CO: Species occurs(ed)</li><li>NM: Extant</li><li>OK: Species occurs(ed)</li><li>TX: Species occurs(ed)</li></ul>
Habitat Association	LOWLANDS, RIPARIAN, TERRESTRIAL
Food Habits	<ul style="list-style-type: none"><li>INVERTIVORE-eats invertebrates</li><li>SCAVENGER-feeds on carrion &amp; refuse</li></ul>

Click for More Images >> [1](#) [2](#)



Photo: Jim Stuart

[Click to search Google for images of this species](#)

Taxonomy	(last updated 3/29/2019)	↑
Legal Status	(last updated 4/26/2019)	↑
Species Distribution	(last updated 5/22/2019)	↑
Habitat Association	(last updated 4/29/2019)	↑
Food Habits	(last updated 6/2/2020)	↑
Environmental Associations	(last updated 4/26/2019)	↑
Life History	(last updated 4/29/2019)	↑
Management Practices	(last updated 4/26/2019)	↑
References		↑

<https://bison-m.org/booklet.aspx?SpeciesID=050705>

# BISON-M: Contract Search



## BISON-M Contract Search



- Search
- Clear
- Print
- Excel
- PDF



**Contract Title** (any part)   
**Contract Year** 2011 to   
**Contract Type(s)** Wildlife Research  
**Contractor** (any part)   
**Contract Amount**  to

### RELATED DOCUMENTS

**Citation** (any part)   
**Year**  to   
**Document Type(s)**   
**Species** (Simple Search)   
**Legal Status**   
**Abstract** (any part)   
**Author(s)**

**Topic(s)**   
**County(ies)**   
**Ecological Level(s)**   
**Geographic Level(s)**   
**Region(s)**   
**Watersheds (HUC8)**   
**USGS Quadrangle(s)**



87 Contracts

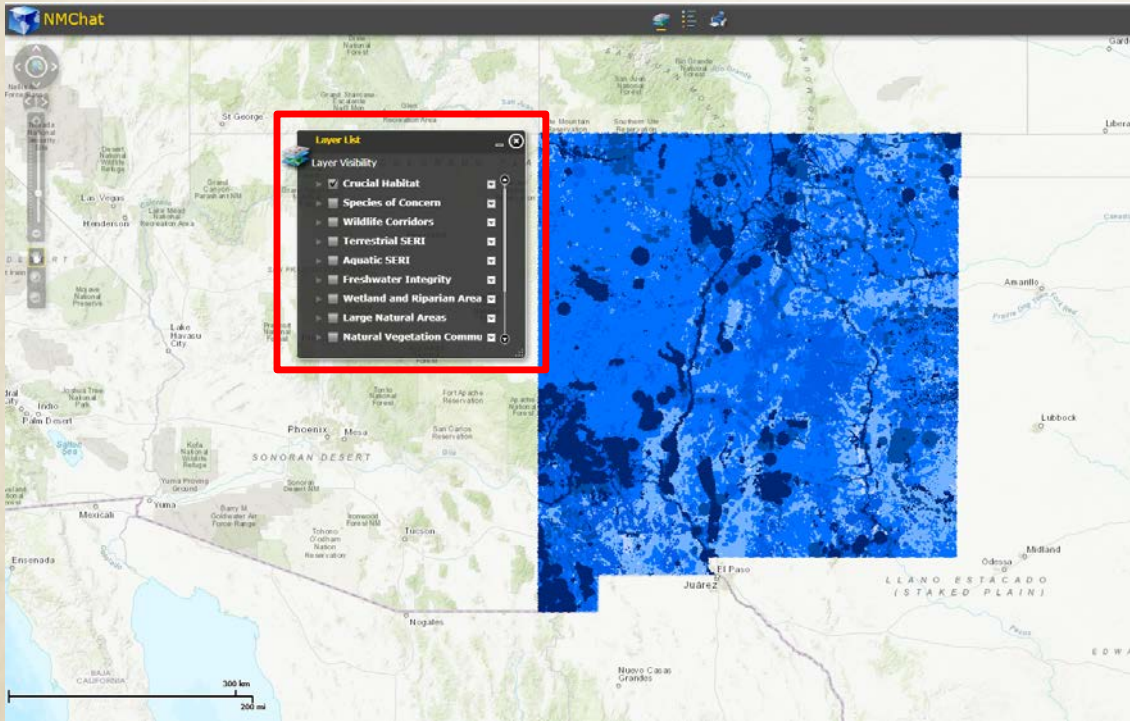
ID	Contract Title	Year	Type	Contractor	Amt	%Fed	Documents
263	Iron Creek woodlandsnail	2011	Wildlife Research	Christin T. Slaughter and Kenneth G. Boykin, New Mexico State University	\$11,265	50%	<a href="#">Slaughter and Boykin, 2011. Genetic Analysis an...</a>
264	Analysis of roost microclimate in nine bat hibernacula across New Mexico	2011	Wildlife Research	Debbie Buecher, Buecher Biological Consulting	\$4,600	50%	<a href="#">Buecher, D., 2011. Status of roost microclimate...</a>
265	The Breeding Biology of the Black-throated Grey Warbler ( <i>Setophaga nigrescens</i> ) in the Manzanita Mountains of New Mexico 2011	2011	Wildlife Research	Rio Grande Bird Research	\$5,250	50%	<a href="#">Rio Grande Bird Research, 2011. The Breeding Bl...</a>
266	Quivira Coalition: Resilience for Rio Grande Cutthroats	2011	Wildlife Research	Michael Bain, Quivira Coalition	\$7,500	50%	<a href="#">Bain, M., 2011. Quivira Coalition: Resilience fo...</a>
267	Cool Season Activity of the Meadow Jumping Mouse in the Middle Rio Grande	2011	Wildlife Research	Greg D. Wright and Jennifer K. Frey, New Mexico State University	\$14,571	50%	<a href="#">Wright, G. and Frey, J. 2010. Cool season activ...</a> <a href="#">Wright, G. and Frey, J. 2011. Cool/Winter activi...</a>
268	Development of non-invasive monitoring protocols for the Organ Mountains chipmunk	2011	Wildlife Research	Jennifer Frey, Frey Biological Research	\$14,000	50%	<a href="#">Frey, J. 2011. Development of non-invasive moni...</a>
269	Evaluation of Great Plains Narrowmouth Toad Habitat in Northeastern New Mexico 2011	2011	Wildlife Research	Jennifer B. Horn, Texas Tech University	\$11,503	50%	<a href="#">Griffis-Kyle, K., 2011. Evaluation of Great Plai...</a>
271	Dunes Sagebrush Lizard Surveys on NMDGF Lesser Prairie Chicken Conservation Areas	2011	Wildlife Research	Michael Hill	\$8,170	50%	<a href="#">Hill, M. 2011. Dunes sagebrush lizard (Sceloporu...</a>
274	Dry and Wet Season Habitat Use of the Narrow-headed Gartersnake, <i>Thamnophis rufipunctatus</i> , in Southwestern NM	2011	Wildlife Research	Randy Jennings and Bruce Christman, Western New Mexico University	\$13,000	50%	<a href="#">Jennings, R., and B. Christman. 2011. Dry and W...</a>
275	Fall 2010 Raptor Migration Studies in the Manzano Mountains of Central New Mexico	2011	Wildlife Research	HawkWatch International, Inc.	\$5,000	50%	<a href="#">Mike, M., and M. Neal. 2010. Study of raptor m...</a>
277	Baseline genetic studies of fishes native to the Gila River Basin	2011	Wildlife Research	Tyler Pilger and Thomas Turner, University of New Mexico	\$11,000	50%	<a href="#">Pilger, T., and T. Turner. 2011. Baseline genet...</a>
279	Genetic Study of the Sacramento Mountains Checkerspot Butterfly	2011	Wildlife Research	Dr. Brook Milligan, New Mexico State University	\$23,200	50%	<a href="#">Ryan, R., and B. Milligan. 2011. Genetic study...</a> <a href="#">Ryan, R., and B. Milligan. 2012. Genetic Study...</a>
280	Conservation Assessment of <i>Ochloides yuma anasazi</i> , Yuma Skipper Butterfly	2011	Wildlife Research	Steven J. Cary, Natural Resource Institute	\$9,500	50%	
291	Investigations into captive propagation of springsnails ( <i>Pyrgulopsis roswellensis</i> and <i>Jurania kosteri</i> ) from New Mexico 2011	2011	Wildlife Research	David L. Rogowski, Texas Tech University	\$8,000	50%	<a href="#">Rogowski, D. 2011. Investgation into captive p...</a>
294	Evaluating the potential extinction of selected	2011	Wildlife Research	Tom Giermakowski and Howard Snell, University of New Mexico	\$8,000	50%	<a href="#">Snell, H., and T. Giermakowski. 2011. Evaluatin...</a>

<https://bison-m.org/ContractSearch.aspx>

# Crucial Habitat Assessment Tool



- Presents a consistent map of wildlife habitat across the West
- Informs project planning at the landscape scale
- Connections: Used in development of Conservation Opportunity Areas in the SWAP; data layers in NMERT



<http://nmchat.org/map/>

# Environmental Review Tool



- Website for proponents to enter details on proposed projects and initiate EEP review
- NMERT generates a species list and initial set of recommendations
- If needed, EEP staff evaluate species potentially impacted by proposed project and provide guidelines to avoid or mitigate species impacts
- Connections: Species lists link to BISON-M; display of CHAT, NMRipMap, and SWAP data layers

# NMERT: Base map

Environmental  
Review Tool  
2018

**ENVIRONMENTAL REVIEW TOOL**

Home Create Project/Map Terms and Conditions Contact Us Help

Switch Basemap Add Resources

Layers Feature Search

**Resource Layers**

- NMDGF Fish Management Plan Waters
- NM SWAP Conservation Opportunity Areas
- NM Audubon Important Bird Areas
- NM Important Plant Areas
- USFWS Critical Habitat
- USFWS Refuges

**CHAT Layers**

- Crucial Habitat
- Species Of Concern
- Riparian Corridors
- Large Natural Areas
- Natural Vegetation

**Reference Layers**

- Counties
- NM Ownership
- Watersheds (HUC8)

**Basemap**

- Basemap: Topographic

**Identify**

Select a resource and click on map to identify

Identify Visible Resources

Identify On: Visible Layers in Resource

Identify By: Point

Use Buffer: 1 Miles

Show Identify Graphic

**Details (1 of 1): NM SWAP Conservation Opportunity Areas - Jemez Mountains**

Layer: NM SWAP Conservation Opportunity Areas

OBJECTID: 6

COA\_Name: Jemez Mountains

COA\_ID: 4

Hex\_ID: 1686023

COA\_Name\_1: Jemez Mountains

COA\_Area: 1710147612.5258

SWAP\_Doc\_Link:  
[https://nhnm.unm.edu/sites/default/files/nonsensitive/New-Mexico-State-Wildlife-Action-Plan-SWAP-2017\\_Links.pdf#Jemez\\_Mountains\\_COA](https://nhnm.unm.edu/sites/default/files/nonsensitive/New-Mexico-State-Wildlife-Action-Plan-SWAP-2017_Links.pdf#Jemez_Mountains_COA)

Shape\_Length: 365269.155793

Shape\_Area: 1121134873.072854

Zoom Flash < > 1 / 1 Tasks

<https://nmert.org/content/map>



# NMERT: Project Data Entry



The screenshot shows the NMERT web application interface. At the top left is the New Mexico Game &amp; Fish logo and the text "ENVIRONMENTAL REVIEW TOOL". Below this is a navigation bar with links: Home, Create Project/Map, My Projects, Projects, Admin, Terms and Conditions, Contact Us, Help. On the top right, there are links for "My account" and "Log out". The main interface features a map of New Mexico with a cyan-colored polygon drawn over the Valle Grande area. A "Draw/Edit" window is open over the map, displaying "Draw Mode: Polygon", "Total Area: 9,280.612 acres", and "Total Perimeter: 101,376.096 ft", with "Cancel" and "Accept" buttons. On the left side, there is a "Layers" panel with categories: Restricted (listing features like NHNM Source Features, Project Footprint, etc.), Resource Layers (listing management plan waters, SWAP areas, etc.), CHAT Layers, Reference Layers (listing Counties, NM Ownership, Watersheds), and Basemap. The map includes geographical labels such as "VALLE SAN ANTONIO", "VALLE TOLEDO", "VALLE SANTA ROSA", "VALLE GRANDE", "VALLE ROSA", "VALLE CALDERA", "VALLE SAN DIEGO", and "VALLECITOS DE LOS INDIOS". It also shows elevation contours, rivers like "Rio Arriba Sandoval" and "Rio de los Filizos", and various canyons. A scale bar and coordinate information are visible at the bottom left of the map.

<https://nmert.org/content/map>

# NMERT: Project Data Entry

Environmental  
Review Tool  
2018

Create Project

Fields marked with red asterisks are required fields.

**Project Title \***  
Enter a descriptive and brief title for this project.

**User Project Number(s)**  
Organization-specific project number(s) for user tracking purposes (optional)

**Project Type \***  
Select only one Project Type per project

- (NO PROJECT REVIEW) SPECIES LIST ONLY
- 401/404 PERMITS
- AIR QUALITY
- ANIMAL DAMAGE
- BORDER SECURITY ACTIVITIES
- COMMUNICATIONS
- COMMUNITY DEVELOPMENT BLOCK GRANTS
- CONSERVATION EASEMENT
- DAM MAINTENANCE
- DECISION SUPPORT SYSTEM



Create Project

**Project Description \***  
Include detailed information about your project, such as timing of activities, equipment and/or materials used, extent of ground disturbance, and wildlife surveys or mitigation that have been built in to the project. Further details and photos can also be uploaded as file attachments.

**Project Organization**  
Select if submitting this project for another organization (optional).  
- None -

**User Agency Type \***  
Please select the agency that best describes your organization.  
NM DEPARTMENT OF GAME AND FISH

**On Behalf Of User**  
Optional. Start typing and select the user from the dropdown only.

**Contact Name \***

**Organization \***

**Email \***

File attachments

File information	Operations
TestVCNPSpeciesList_SGC.pdf (39.82 KB)	<input type="button" value="Remove"/>

Add a new file  
 No file chosen

Files must be less than 50 MB each.  
Allowed file types: doc jpeg jpeg gif png txt doc xls pdf ppt pps docx xlsx zip kml kmz.



<https://nmert.org/content/map>

# NMERT: Project Report



New Mexico Department of Game and Fish  
Project ID: NMERT-865



## Special Status Animal Species within 2000 Meters of Project Area

Common Name	Scientific Name	USFWS (ESA)	NMDGF (WCA)	NMDGF SGCN/SERI
<a href="#">Jemez Mountains Salamander</a>	<a href="#">Plethodon neomexicanus</a>	Endangered	E	SGCN
<a href="#">Northern Leopard Frog</a>	<a href="#">Lithobates pipiens</a>			SGCN
<a href="#">Eared Grebe</a>	<a href="#">Podiceps nigricollis</a>			SGCN
<a href="#">American Bittern</a>	<a href="#">Botaurus lentiginosus</a>			SGCN
<a href="#">Peregrine Falcon</a>	<a href="#">Falco peregrinus</a>		T	SGCN
<a href="#">Mountain Plover</a>	<a href="#">Charadrius montanus</a>			SGCN
<a href="#">Flammulated Owl</a>	<a href="#">Otus flammeolus</a>			SGCN
<a href="#">Mexican Spotted Owl</a>	<a href="#">Strix occidentalis lucida</a>	Threatened		SGCN
<a href="#">Boreal Owl</a>	<a href="#">Aegolius funereus</a>		T	SGCN
<a href="#">Black Swift</a>	<a href="#">Cypseloides niger</a>			SGCN
<a href="#">Lewis's Woodpecker</a>	<a href="#">Melanerpes lewis</a>			SGCN
<a href="#">Red-Headed Woodpecker</a>	<a href="#">Melanerpes erythrocephalus</a>			SGCN
<a href="#">Williamson's Sapsucker</a>	<a href="#">Sphyrapicus thyroideus</a>			SGCN
<a href="#">Olive-Sided Flycatcher</a>	<a href="#">Contopus cooperi</a>			SGCN
<a href="#">Bank Swallow</a>	<a href="#">Riparia riparia</a>			SGCN
<a href="#">Pinvon Jay</a>	<a href="#">Gymnorhinus cyanocephalus</a>			SGCN
<a href="#">Clark's Nutcracker</a>	<a href="#">Nucifraga columbiana</a>			SGCN
<a href="#">Juniper Titmouse</a>	<a href="#">Baeolophus ridgwayi</a>			SGCN
<a href="#">Pygmy Nuthatch</a>	<a href="#">Sitta pygmaea</a>			SGCN
<a href="#">Western Bluebird</a>	<a href="#">Sialia mexicana</a>			SGCN
<a href="#">Loggerhead Shrike</a>	<a href="#">Lanius ludovicianus</a>			SGCN
<a href="#">Brown-Capped Rosy-Finch</a>	<a href="#">Leucosticte australis</a>			SGCN
<a href="#">Rio Grande Cutthroat Trout</a>	<a href="#">Oncorhynchus clarkii virginalis</a>			SERI
<a href="#">Rio Grande Sucker</a>	<a href="#">Catostomus plebeius</a>			SGCN
<a href="#">Preble's Shrew</a>	<a href="#">Sorex preblei</a>			SGCN
<a href="#">Spotted Bat</a>	<a href="#">Euderma maculatum</a>		T	SGCN
<a href="#">American Pika</a>	<a href="#">Ochotona princeps</a>			SGCN
<a href="#">American Pika</a>	<a href="#">Ochotona princeps</a>			SGCN
<a href="#">Gunnison's Prairie Dog</a>	<a href="#">Cynomys gunnisoni</a>			SGCN
<a href="#">Wrinkled Marshsnail</a>	<a href="#">Stagnicola caperata</a>		E	SGCN
<a href="#">Black Bear</a>	<a href="#">Ursus americanus</a>			SERI
<a href="#">Cougar</a>	<a href="#">Puma concolor</a>			SERI
<a href="#">Elk</a>	<a href="#">Cervus canadensis nelsoni</a>			SERI
<a href="#">Mule Deer</a>	<a href="#">Odocoileus hemionus</a>			SERI
				SERI

ESA = Endangered Species Act, WCA = Wildlife Conservation Act, SGCN = Species of Greatest Conservation Need, SERI = Species of Economic and Recreational Importance

# SWAP Website



- User-friendly access to a comprehensive conservation plan for New Mexico
- Identifies Species of Greatest Conservation Need (SGCN), habitats, threats, and conservation actions
- Qualifies the Department to apply for State Wildlife Grant funds from U.S. Fish and Wildlife Service
- Connections: Links to BISON-M species accounts; informs SwW project proposal development

<https://nmswap.org/>

# SWAP Website: Home Page



## New Mexico State Wildlife Action Plan

- OVERVIEW
- SPECIES
- ECOREGIONS
- HABITATS
- THREATS AND CONSERVATION ACTIONS
- CONSERVATION OPPORTUNITY AREAS
- MONITORING
- CLIMATE CHANGE

Welcome to the State Wildlife Action Plan for New Mexico, your portal for exploring the conservation needs and opportunities for New Mexico's wildlife and their habitats.

Learn about Species of Greatest Conservation Need and where they live.

Read about Threats and Potential Conservation Actions.

Explore Conservation Opportunity Areas.

Search...

Related Resources



# SWAP Website: Information Pathway



Species



Habitats



Actions

# SWAP Website: SGCN Search










**OVERVIEW**

**SPECIES**

## Species

Species considered for inclusion as Species of Greatest Conservation Need (SGCN) had to occur within the state ([www.bison-m.org/](http://www.bison-m.org/)) and meet at least one of the following conditions:

↓ Read More









 Amphibians	 Birds	 Crustaceans	 Fish
 Mammals	 Molluscs	 Reptiles	



**New Mexico STATE WILDLIFE ACTION PLAN**

## Reptiles

← BACK TO SPECIES LIST  
New Mexico Reptiles

 New Mexico Ridge-nosed Rattlesnake	 Western River Cooter	 Dunes Sagebrush Lizard	 Slevin's Bunchgrass Lizard
 Mexican Gartersnake	 Narrow-headed Gartersnake	 Giant Spotted Whiptail	 Arizona Black Rattlesnake

<https://nmswap.org/species>

# SWAP Website: SGCN Page



## Western River Cooter



Name	Western River Cooter
Scientific Name	<i>Pseudemys gorzugi</i>
Category	I
Taxon	Reptiles

Search...

### Related Resources

Ecoregions

Habitats

Threats and Conservation Actions

[More species information from Bison-M.org](#)

Western River Cooter (*Pseudemys gorzugi*) is a small (up to 24 cm carapace length) freshwater turtle that occurs in the Rio Grande and Pecos River drainages from New Mexico to Texas and northeastern Mexico. They have recently been detected at several sites along the Black River in southeastern New Mexico. They are often found basking on logs, muddy banks, and overhanging vegetation.

### Ecoregions



### Habitats



### Threats and Conservation Actions





# Riparian Map

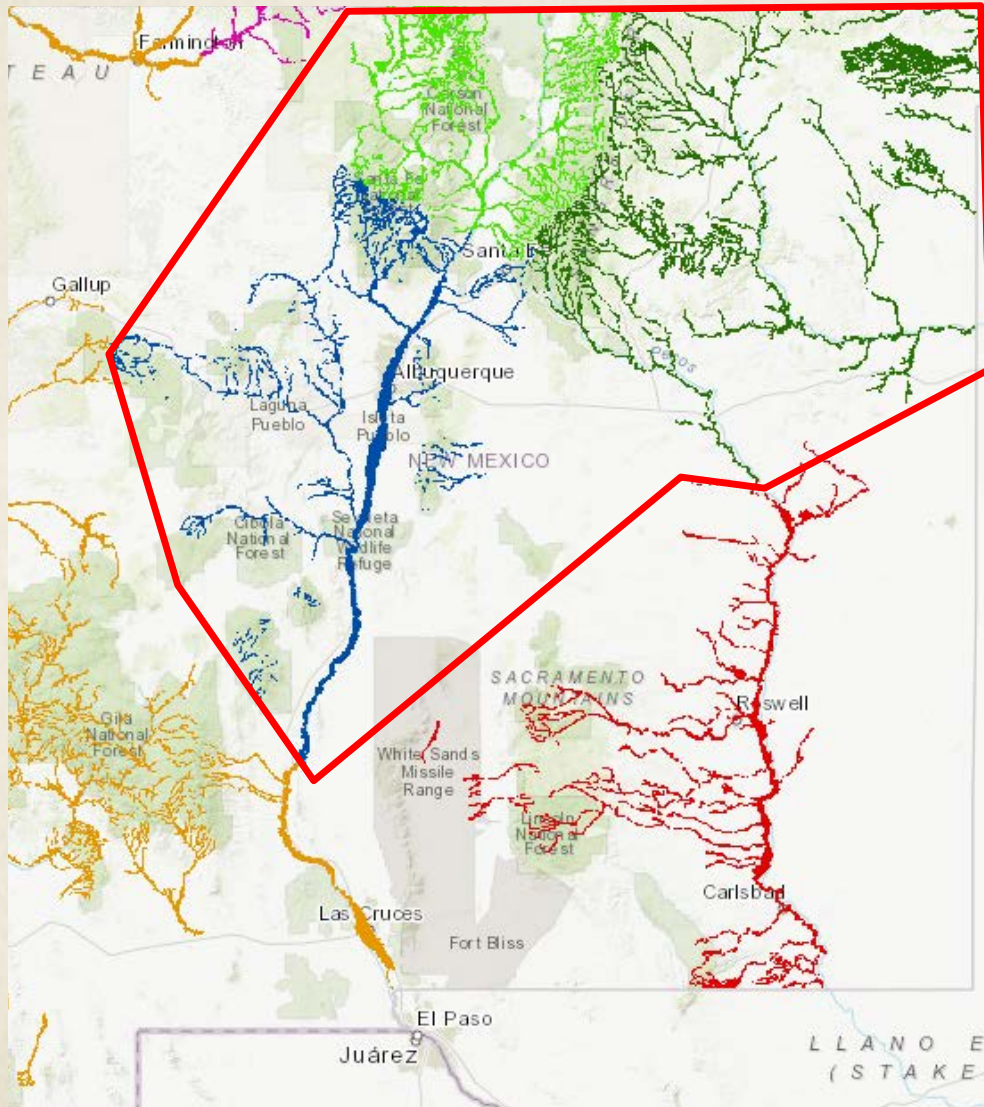
Riparian Map  
Ongoing

- Statewide dataset (3 of 6 project areas completed)
- Provides enhanced detail on plant community structure and composition of riparian habitats
- Can inform riparian restoration project planning and technical reviews of projects that may impact riparian areas
- Connections: Addresses key habitat from the SWAP; data displayed in NMERT; can inform SwW project proposal development

<https://nhnm.unm.edu/riparian/nmripmap>

# NMRipMap: Riparian Corridor

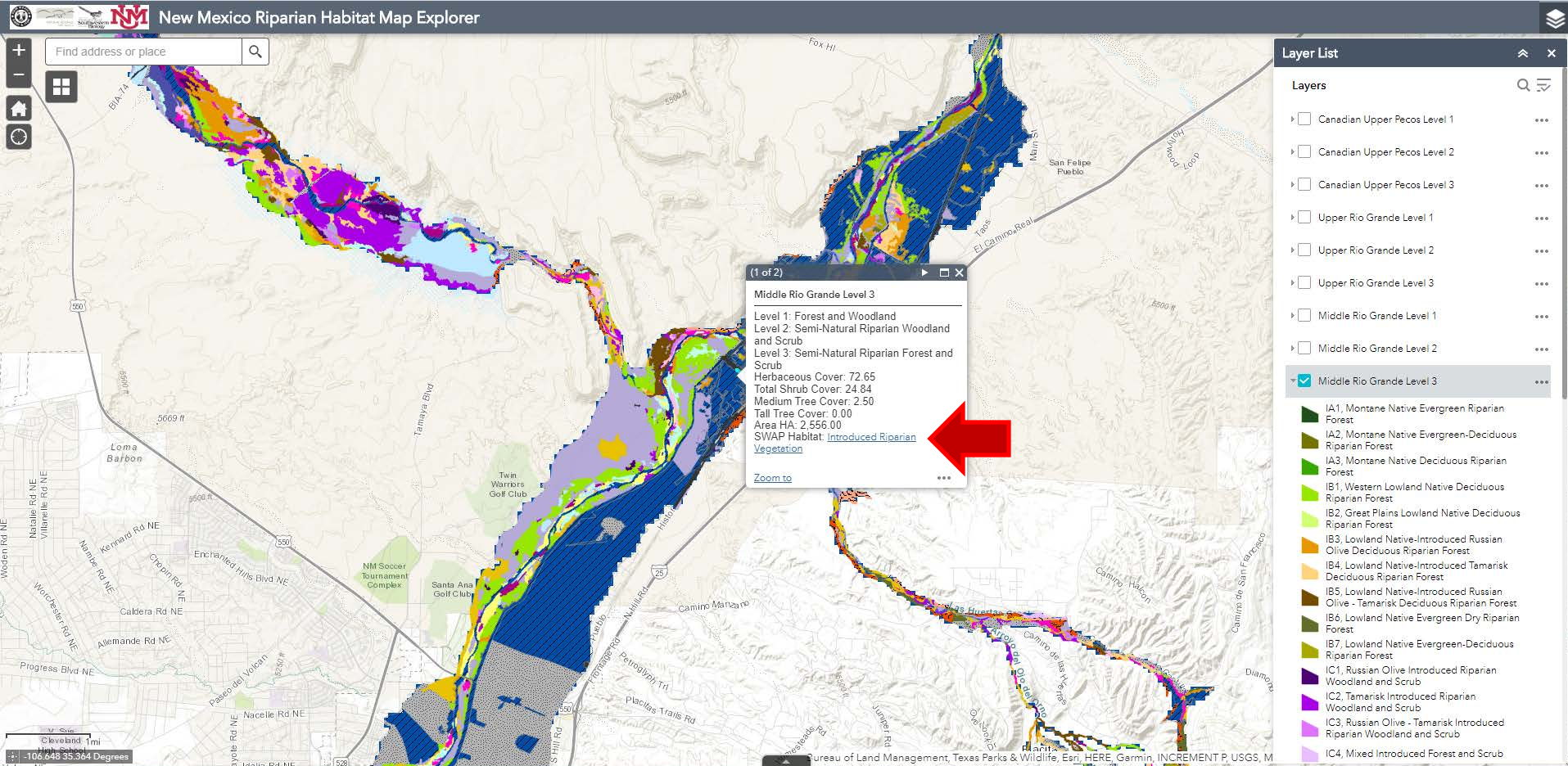
Riparian Map  
Ongoing



<https://nhnm.unm.edu/riparian/nmripmap>

# NMRipMap: Community Detail

Riparian Map  
Ongoing

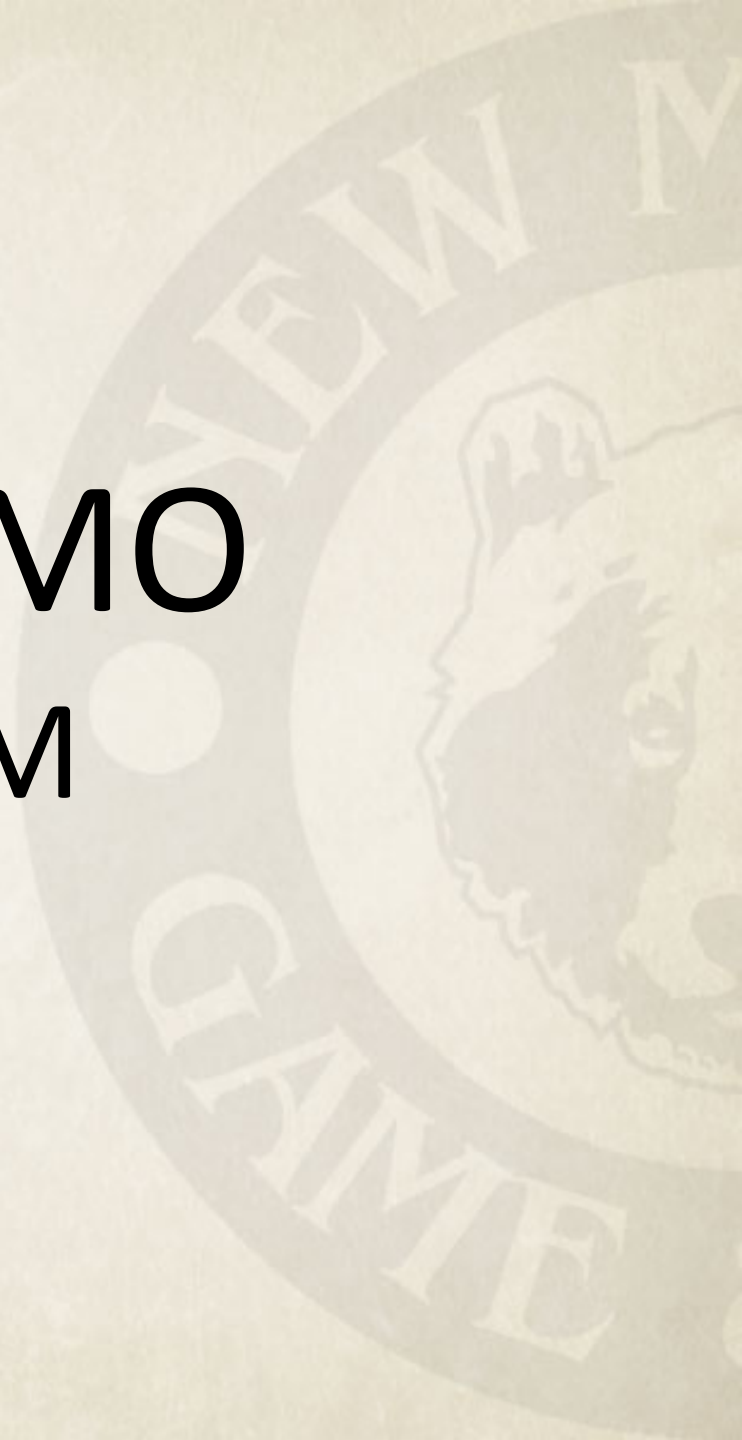


<https://nhnm.unm.edu/riparian/nmripmap>

# LIVE DEMO

## BISON-M

## SWAP



# Questions?

