



Agenda Item No. 18: Update on Gila Trout Management



Presented by: Jill Wick



Background

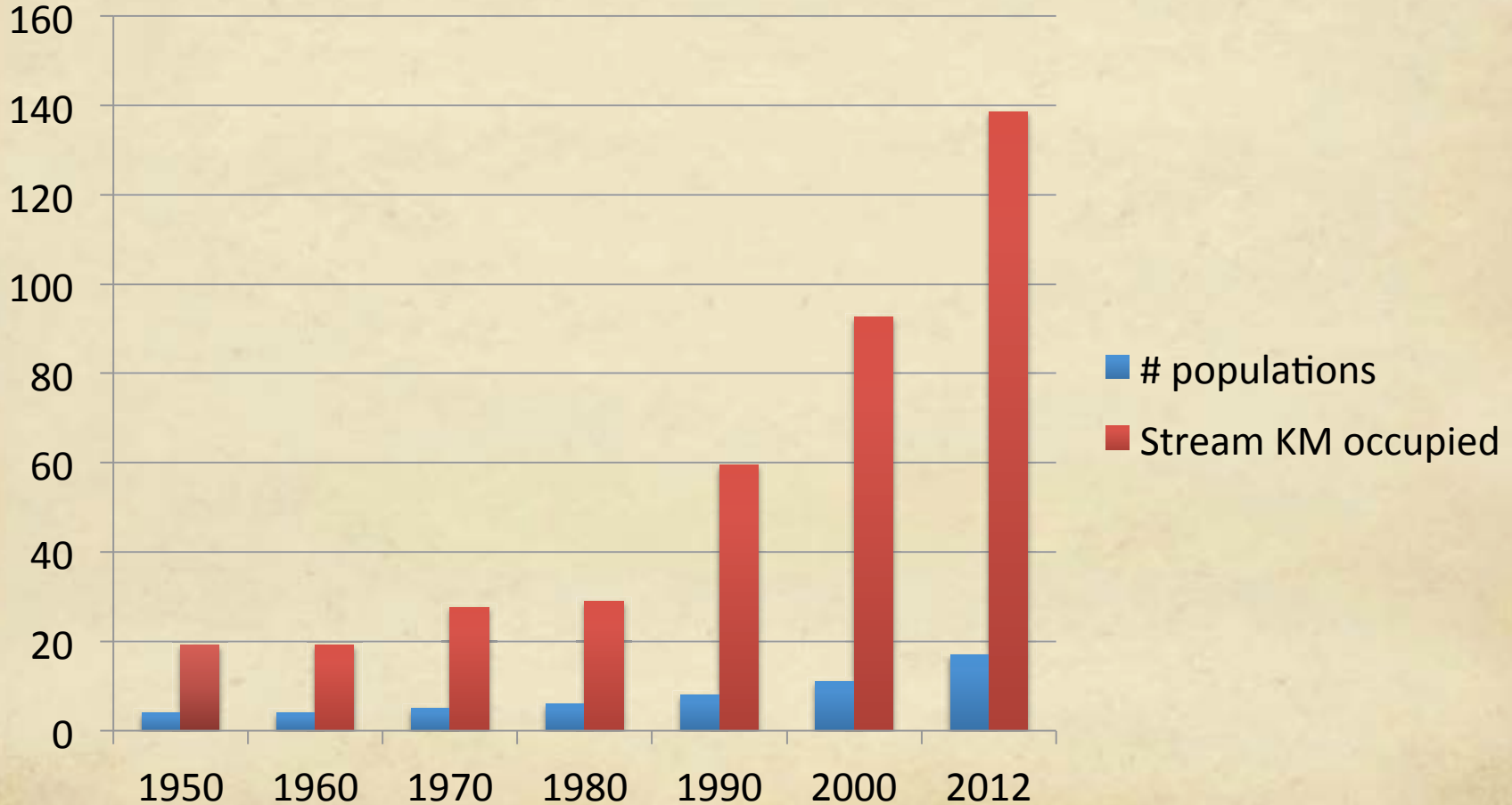
Listed as Endangered under

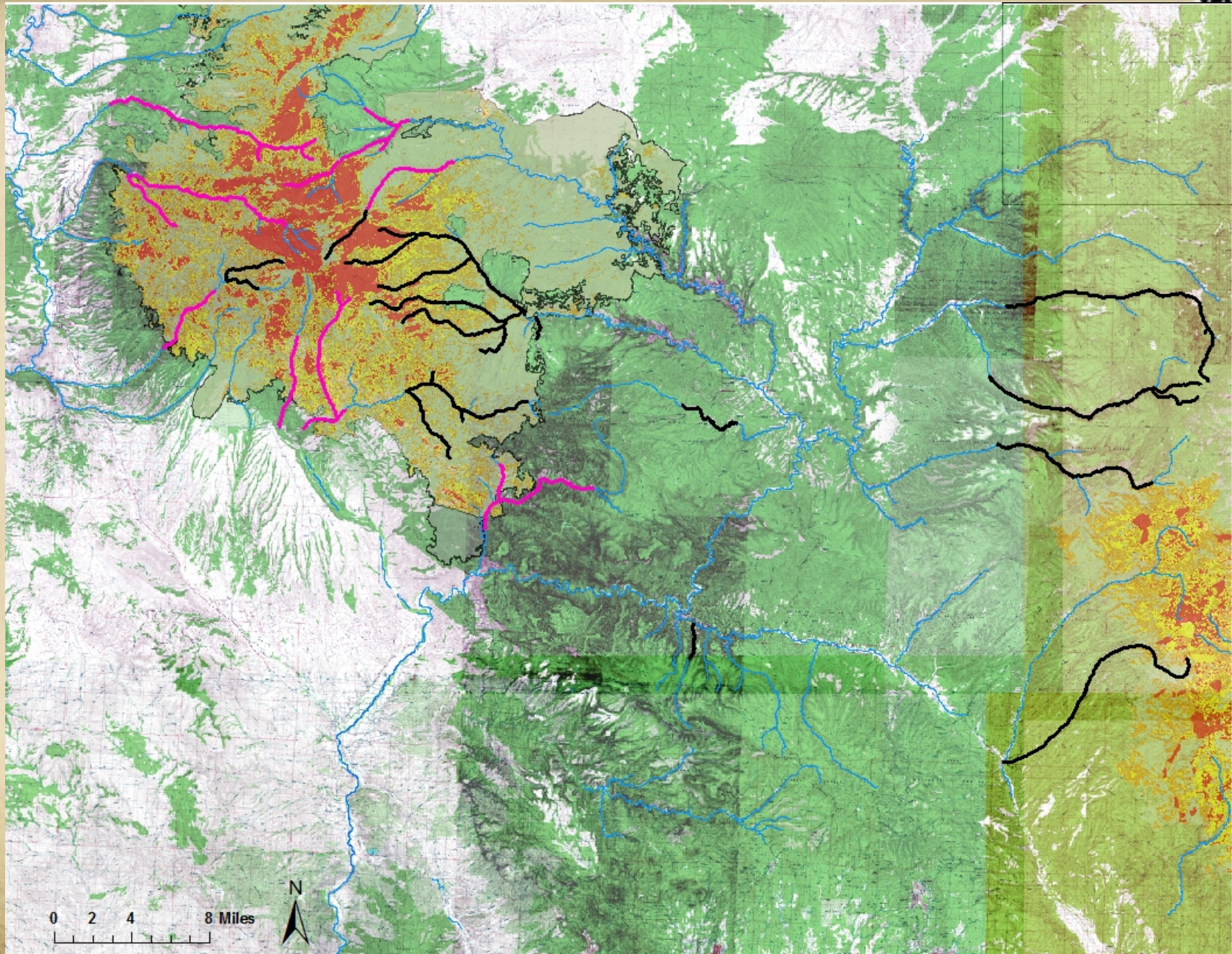
- Endangered Species Preservation Act of 1966
- Endangered Species Act of 1973
- New Mexico Wildlife Conservation Act of 1974
- State downlisted to threatened in 1988
- Federally downlisted to threatened in 2006





Gila Trout Status Spring 2012





Fisheries Division

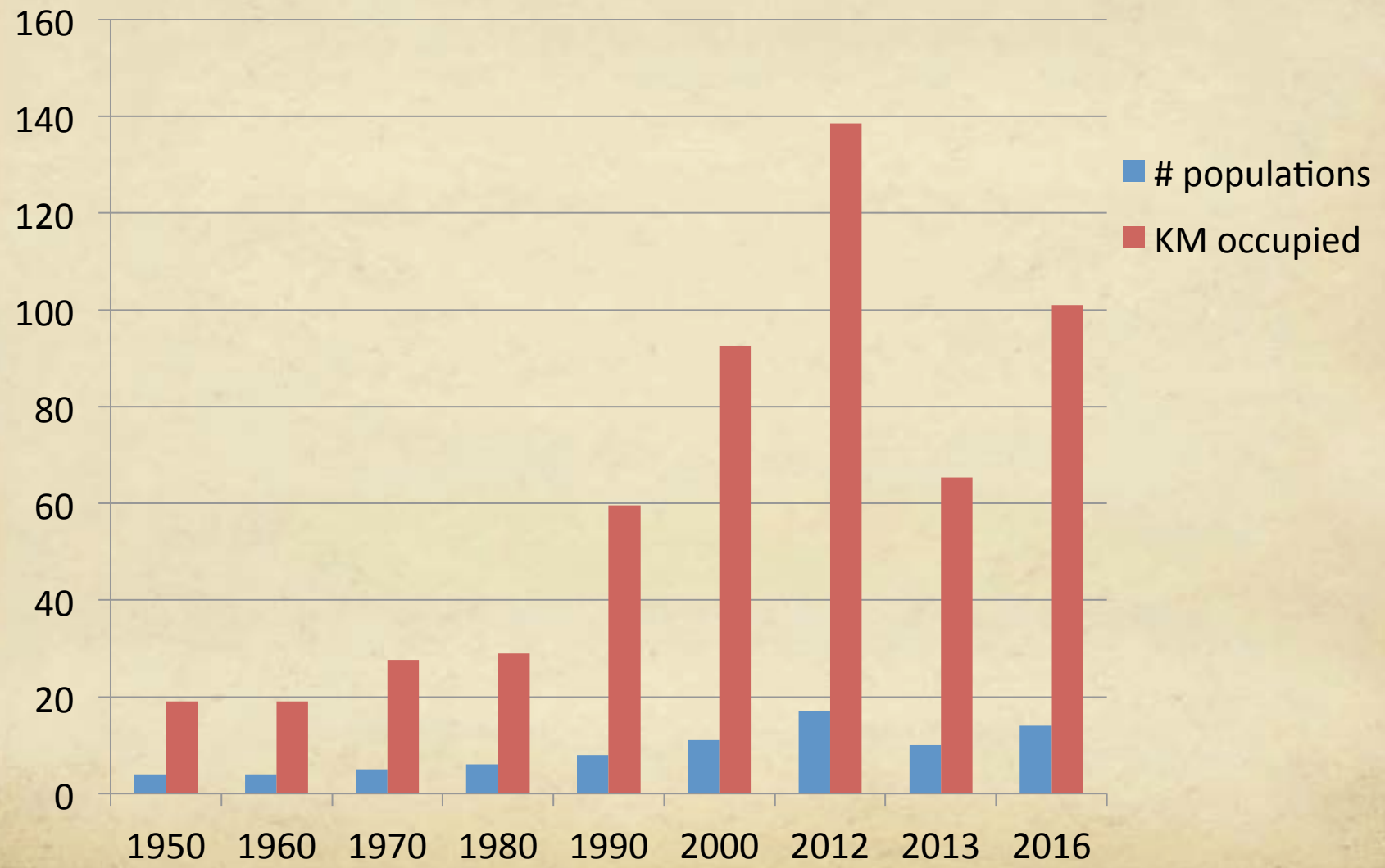
Activities since Fires

- Conducted fish and habitat surveys in all streams affected by the fires
- Returned fish to three streams (31 km)
- Removed few remaining brown trout in Willow Creek and stocked it with Gila trout





Current Status



Future Activities



- Willow Creek Fish Barrier
 - Construction to begin May 2016
 - Will add 16 km
- Mineral Creek
 - No nonnative fish present
 - Plan to stock this month
 - Will add 16 km
- Return fish to Spruce Creek
 - Planned for fall 2016
 - Will add 3.7 km



Future Activities

- Whitewater Creek Restoration
 - EA is in progress
 - Anticipate decision spring 2017, implementation spring or fall 2017
 - Will add 38 km
- Recreational angling
 - Currently stocking 5 waters for recreational angling, 1 wild stream
 - Compliance to start raising Gila trout at Glenwood is in progress

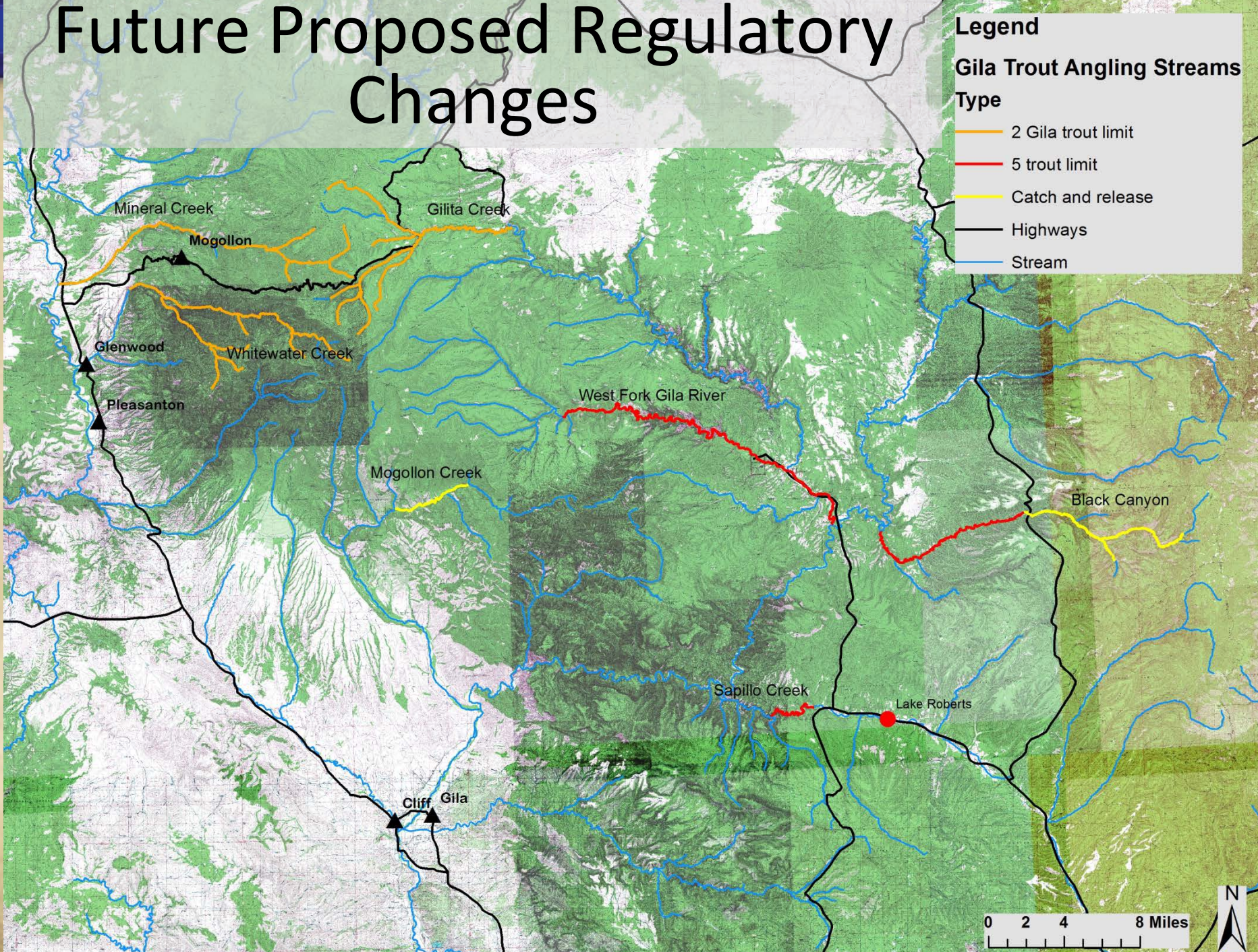


Future Proposed Regulatory Changes

Legend

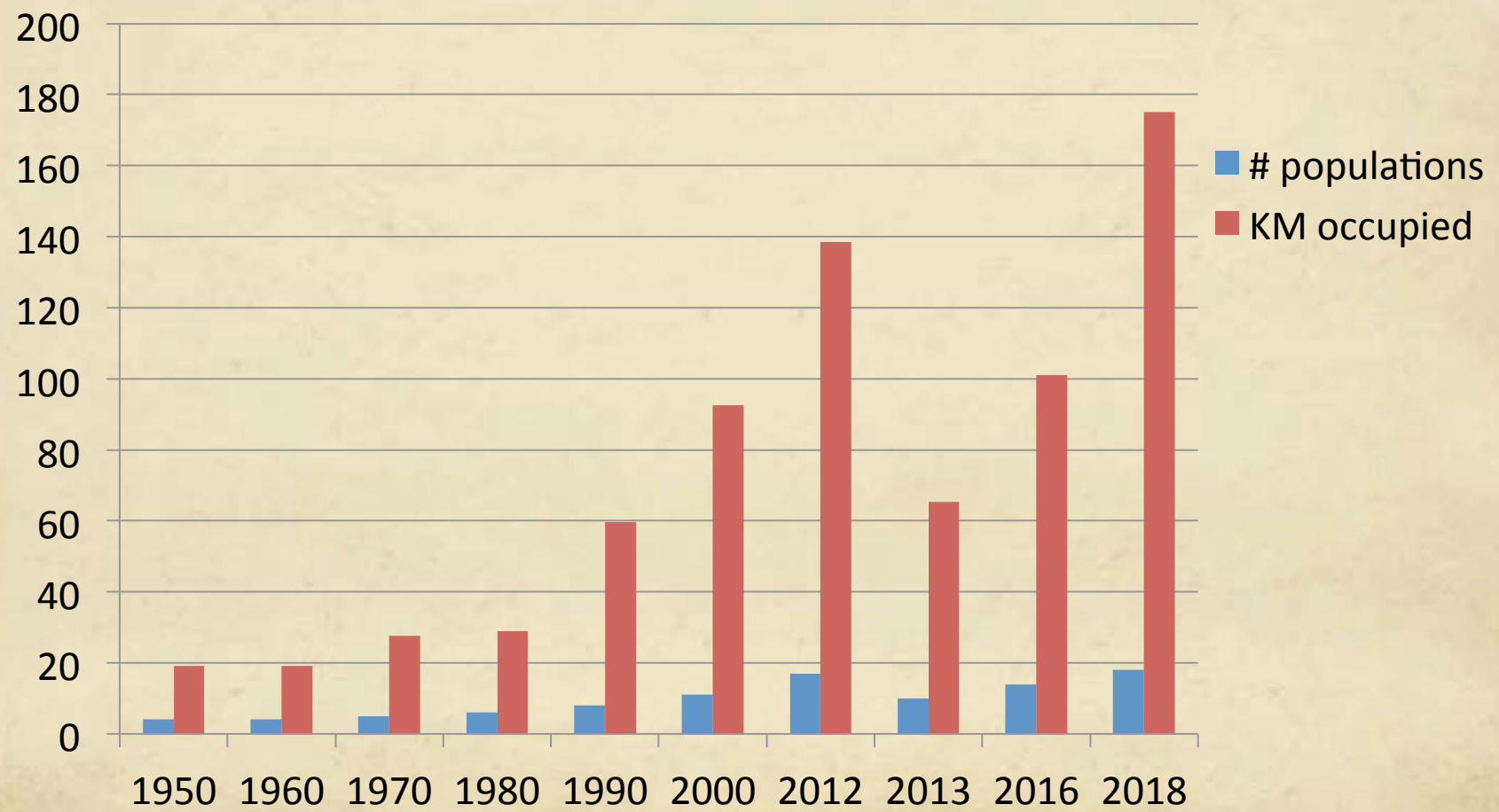
Gila Trout Angling Streams Type

- 2 Gila trout limit
- 5 trout limit
- Catch and release
- Highways
- Stream





Future





QUESTIONS?

