

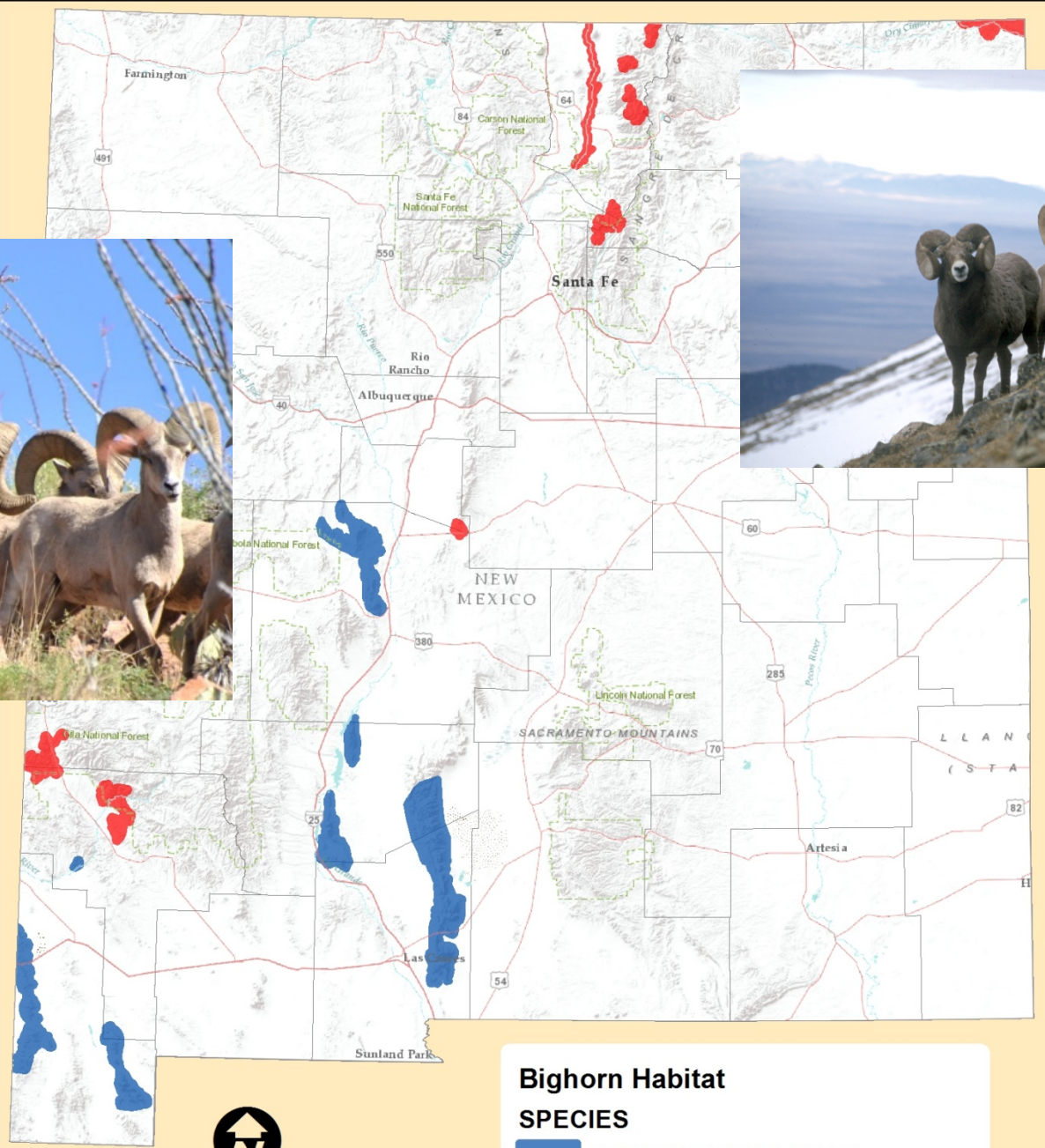


# **Bighorn Reintroduction Update**

**June 23, 2016**

**New Mexico State Game Commission Meeting**

**Santa Rosa, NM**



**Bighorn Habitat**

**SPECIES**

- DESERT BIGHORN SHEEP
- ROCKY MOUNTAIN BIGHORN SHEEP

Sources: Esri, DeLorme, USGS, NPS, Sources: Esri, USGS, NOAA



# Desert Bighorn Status, Statewide

- **Fra Cristobal: 250-285**
- **Caballos: 125-140**
- **Peloncillo: 125-140**
- **Hatchets: 225-265**
- **Sierra Ladron: 80-95**
- **San Andres: 200-240**
- ***TOTAL: 1005-1165***

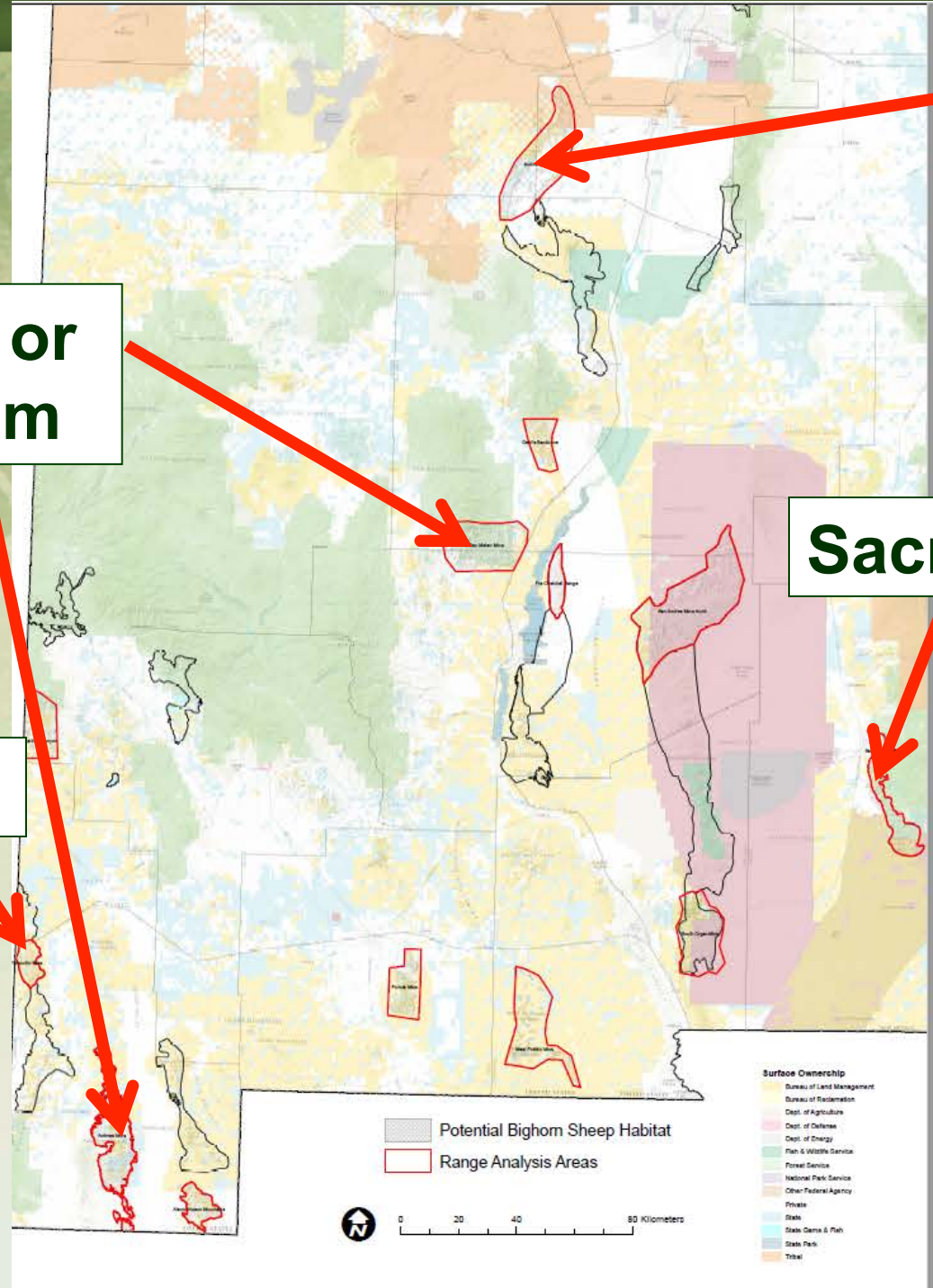


**Ladron**

**San Mateo or  
Cowboy Rim**

**Sacramento**

**Peloncillos**





# Barbary Sheep GMU 34

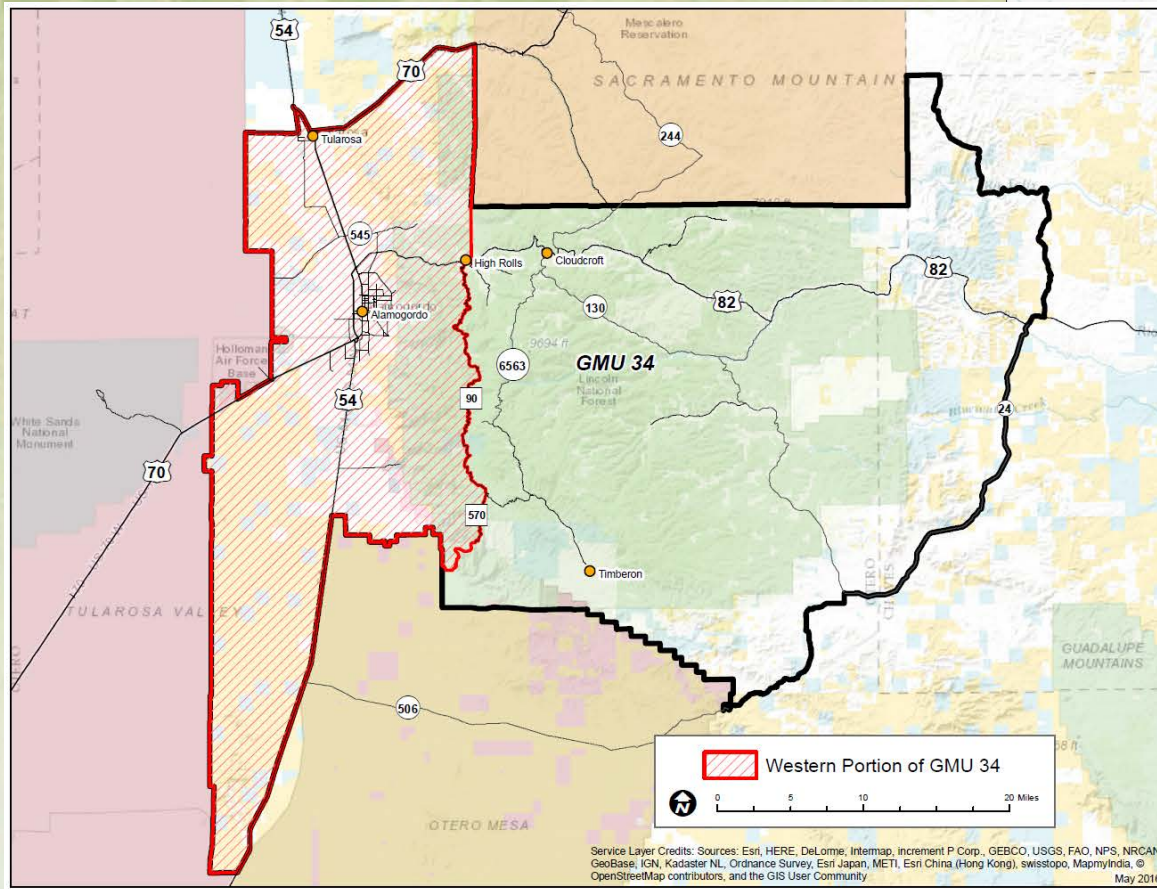
## 2015-16 New Mexico Barbary Sheep Hunter Harvest Report, New Mexico Department of Game and Fish

	GMU	Hunt code	Weapon	Hunt Dates	Licenses Sold or Converted	Bag Limit	No. of Hunters Reported	% Reprtd	Success Rate	Estimated Harvest		Satisfaction Rating
										Males	Females	
All Hunts	31, 32, 34, 36 & 37	BBY-1-100	Any Legal	Feb. 1-29	676	ES	632	93%	41%	147	70	3.2
	31, 32, 34, 36 & 37 Private	BBY-1-200	Any Legal	Feb. 1-29	313	ES	228	73%	75%	117	106	4.2
	29 & 30	BBY-1-101	Any Legal	Feb. 1-29	600	ES	545	91%	46%	190	44	3.6
	29 & 30 Private	BBY-1-201	Any Legal	Feb. 1-29	38	ES	32	84%	52%	11	6	3.5
	28 Military Only	BBY-1-102	Any Legal	Dec. 26-27	8	ES	8	100%	40%	2	0	2.2
	28	BBY-1-103	Any Legal	Dec. 26-27	8	ES	6	75%	50%	4	0	3.3
	Statewide Excluding Special Licenses	BBY-1-300	Any Legal	Apr.1-Mar31	575	ES	480	83%	35%	105	71	3.2
	BBY-1-601	Any Legal	Apr.1-Mar31	1	ES	0	0%	N/A	N/A	N/A	N/A	
<b>Barbary Sheep Hunt Totals</b>					<b>2219</b>		<b>1931</b>	87%	46%	<b>576</b>	<b>296</b>	<b>3.3</b>

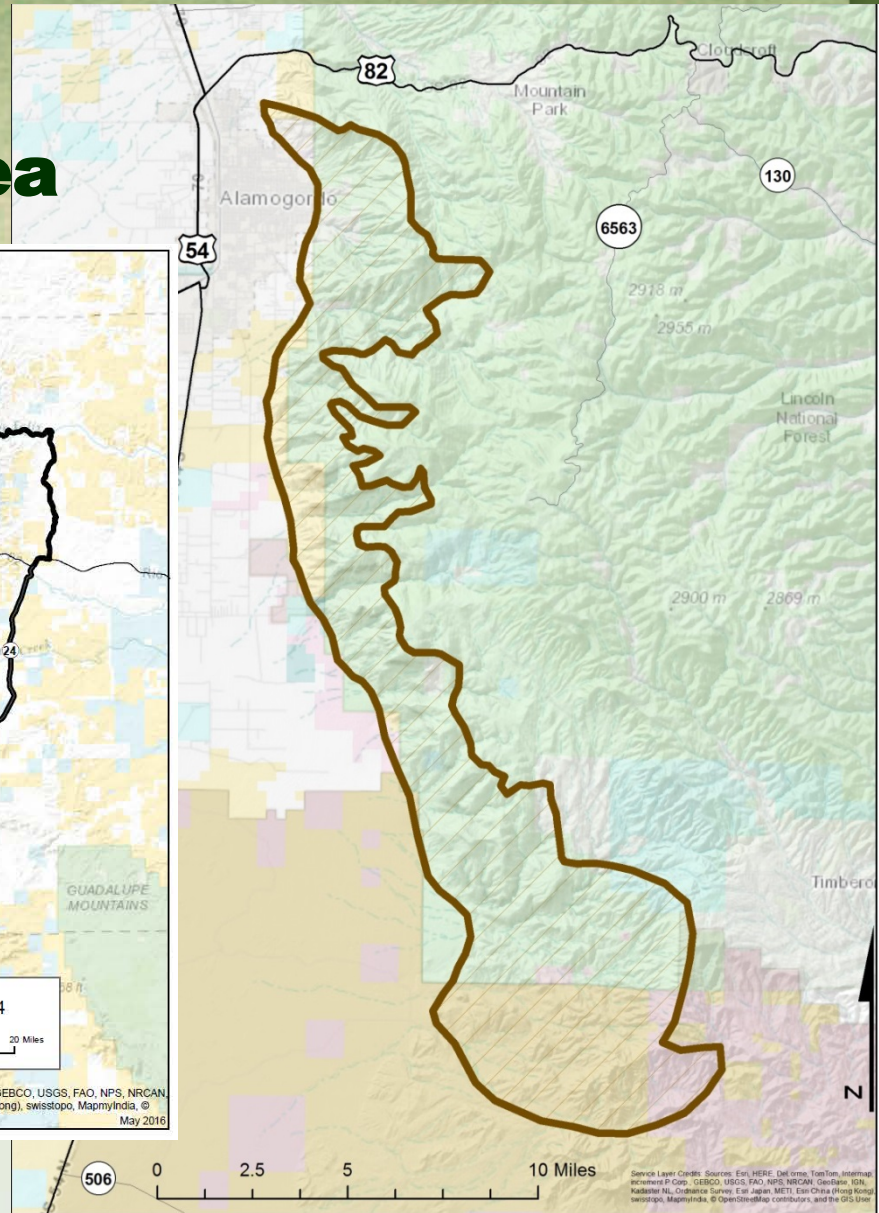


# Potential Bighorn Habitat

## OTC Barbary Harvest Area



Service Layer Credits: Sources: Esri, HERE, DeLorme, Intermap, increment P Corp., GEBCO, USGS, FAO, NPS, NRCAN, GeoBase, IGN, Kadaster NL, Ordnance Survey, Esri Japan, METI, Esri China (Hong Kong), swisstopo, MapmyIndia, © OpenStreetMap contributors, and the GIS User Community  
May 2016



Service Layer Credits: Sources: Esri, HERE, DeLorme, Intermap, increment P Corp., GEBCO, USGS, FAO, NPS, NRCAN, GeoBase, IGN, Kadaster NL, Ordnance Survey, Esri Japan, METI, Esri China (Hong Kong), swisstopo, MapmyIndia, © OpenStreetMap contributors, and the GIS User Community



***Questions?***

