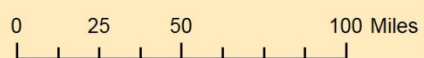




# **Sacramento Bighorn and Barbary**

**March 26, 2015**

**New Mexico State Game Commission Meeting  
Alamogordo, NM**



**Bighorn Habitat**

**SPECIES**

- DESERT BIGHORN SHEEP
- ROCKY MOUNTAIN BIGHORN SHEEP

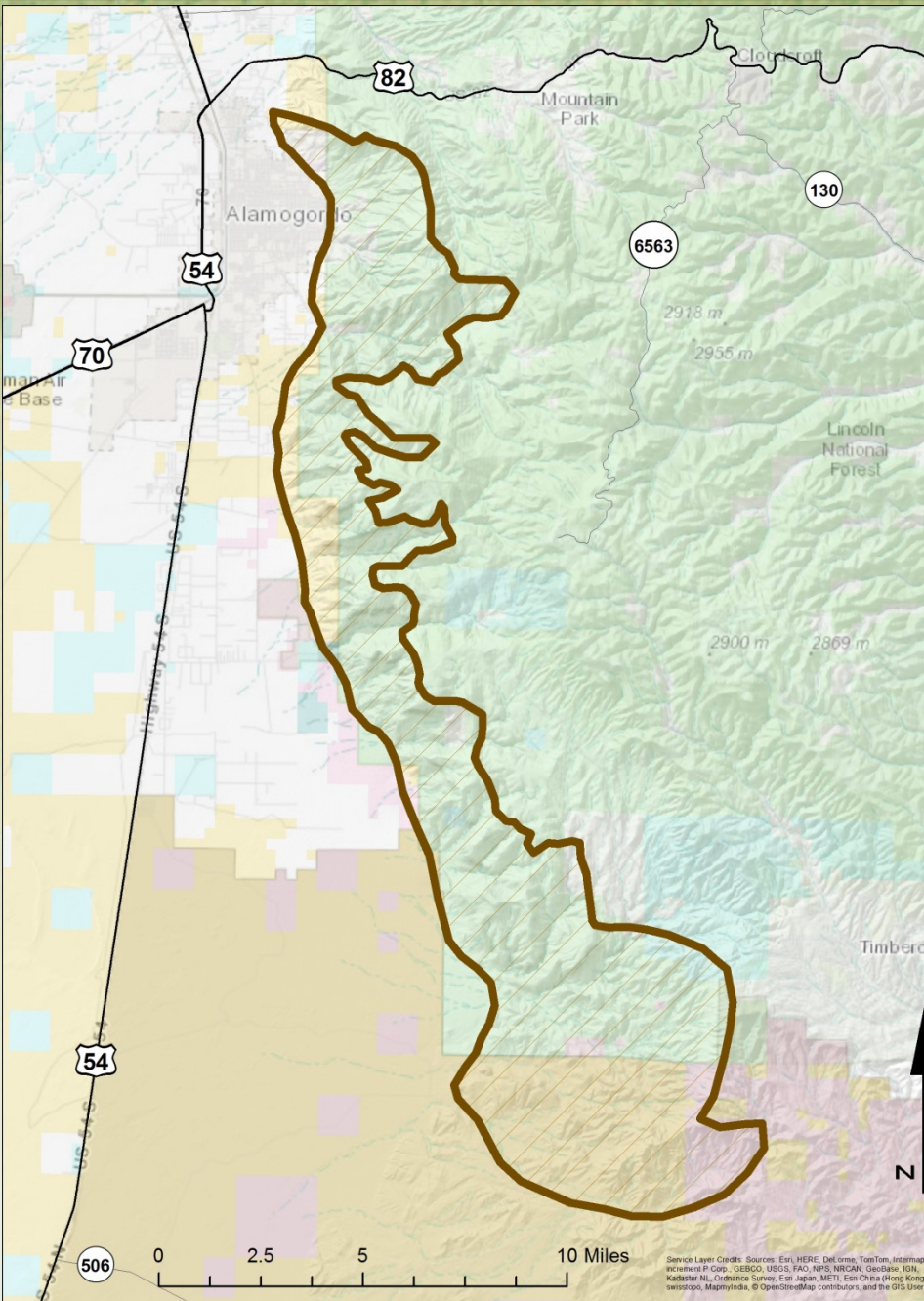
Sources: Esri, DeLorme, USGS, NPS, Sources: Esri, USGS, NOAA



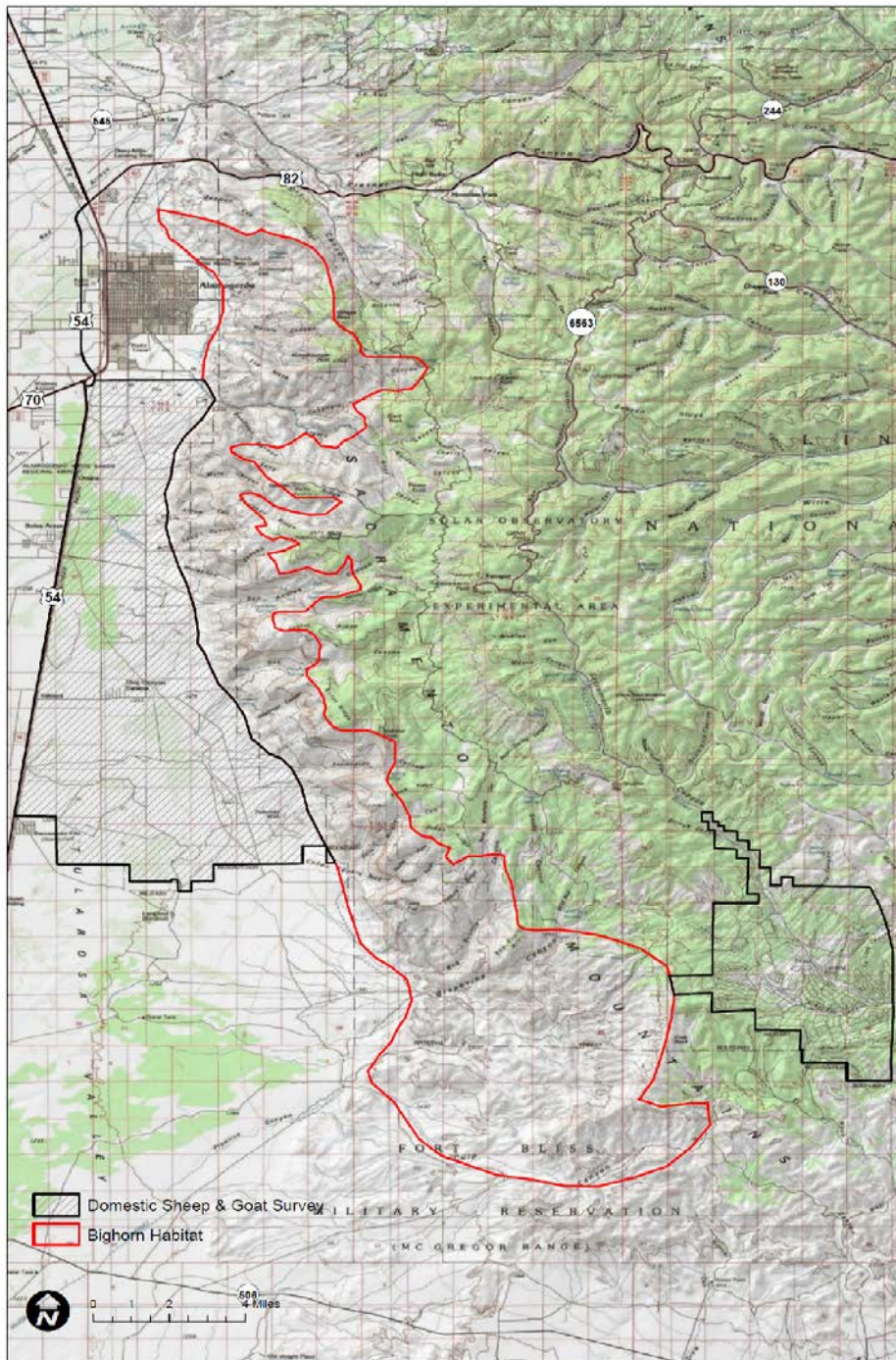
# History

- In 1936 & 1938 sightings of Desert Sheep in Dog and Nelson Canyons
- 1942 Desert sheep head from Mescalero
- 2013 Commission directed the Department to move forward releasing Desert sheep in Sac's

# Potential Bighorn Habitat



# Potential Bighorn Habitat





*Wildlife Management Division*

# History

- 1940 Barbary introduced to McKnight Ranch game park
- 1943 First known escapes out of McKnight ranch
- 1950 NMDGF released Barbary into wild in Mills Canyon
- 1955 Barbary statutorily classified as game animal
- 1956 illegal release in Largo Canyon



A photograph showing a group of bighorn sheep in a natural, rocky environment with sparse vegetation. The sheep are of various sizes, including several adults with large, curved horns and some younger animals. They are standing on a rocky slope with some green shrubs and trees in the background.

# History

- 1965 large escape from McKnight ranch of ~100 animals
- 1967 First Barbary hunt in Hondo Valley
- 1967 First reports of Barbary in Sacramento Escarpment
- 1980 Management plans initiated to limit Barbary expansion



A photograph showing a group of bighorn sheep in a natural, rocky, and brushy environment. The sheep are of various sizes, including several adults with large, curved horns and some younger animals. They are standing on a rocky slope with sparse vegetation and small trees.

# History

- 2005 Barbary hunting in GMU 34 split from Statewide hunt
- 2009 Barbary hunting in GMU 34 becomes draw
- 2013 Westside of GMU 34 open to OTC

# 2014 - 15 Harvest Report

Division

## 2014-2015 New Mexico Barbary Sheep Harvest Report

GMU	Hunt Code	Hunt Dates	Estimate					% Female in Harvest	Satisfaction Rating	Days Hunted
			Hunters	Harvest	Success Rate	Female Harvest	Male Harvest			
31,32,34,36 & 37	BBY-1-100	Feb 1-28, '15	457	202	44.3%	67	135	33.3%	3.3	4.7
Pvt (31,32,34,36, &37)	BBY-1-200	Feb 1-28, '15	326	237	72.6%	115	122	48.3%	4.2	2.8
29 & 30	BBY-1-101	Feb 1-28, '15	515	213	41.5%	63	150	29.7%	3.4	4.8
Pvt (29&30)	BBY1-201	Feb 1-28, '15	25	11	45.0%	2	9	22.2%	3.2	4.0
28 MI	BBY-1-102	Dec 27-28, '14	3	2	66.7%	0	2	0.0%	4.3	1.7
28	BBY-1-103	Dec 27-28, '14	5	2	40.0%	1	1	50.0%	2.6	1.6
Statewide excluding	BBY-1-300	Apr 1-Mar31, 14-15	534	197	36.9%	55	143	27.7%	3.3	5.9
<b>TOTALS</b>			<b>1,865</b>	<b>865</b>	<b>46.4%</b>	<b>303</b>	<b>562</b>	<b>35.1%</b>	<b>3.4</b>	<b>4.7</b>

Wildlife



**Bushnell**

01-04-2010 16:38:23

Photo Credit Circleranchtx.com

*Wildlife Management Division*