



# Gould's Turkey and Gila Monster Recovery Plans

**January 12, 2017**

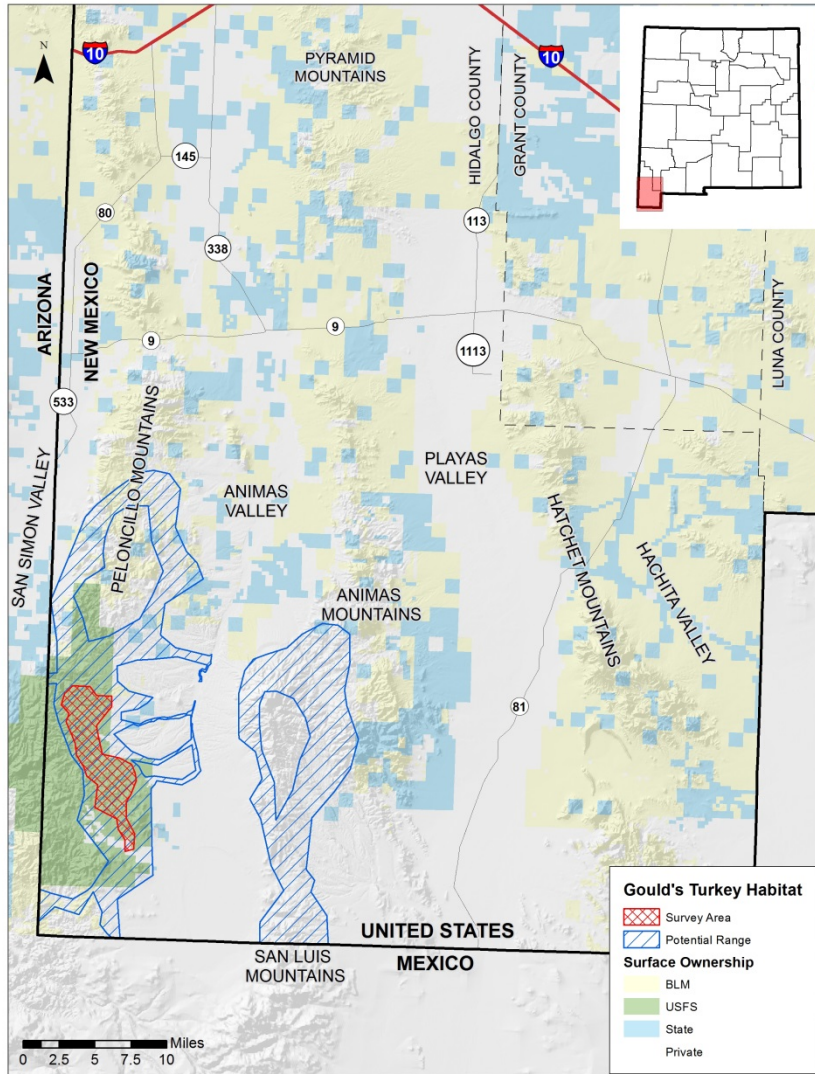
**New Mexico State Game Commission Meeting  
Santa Fe, NM**



# NM Gould's Turkey Habitat

- Range confined to 'bootheel' (Mexican subspecies).
- Inhabits Madrean Evergreen Woodland habitat type.
- Most habitat in riparian areas.
- Requires mast-producing trees & shrubs, grasses, tall roost trees, water sources.

# NM Gould's Turkey Distribution



The logo of the New Mexico Game & Fish Department is a circular seal. It features a central illustration of a bison's head facing left. The words "NEW MEXICO" are written in a circle around the top, and "GAME & FISH" around the bottom.

# **Gould's Turkey Listing Background**

- **Listed as threatened under WCA in 1975.**
- **Limited habitat available in NM, but sufficient to maintain the species.**
- **Recent augmentations successful.**



# **Public Participation in Recovery Planning for Gould's Turkey**

**June 2016:**

- **Recovery plan development announced via press release and email.**
- **Public meetings in Las Cruces (7 attendees) and Silver City (5 attendees).**
- **Advisory Committee formed (9 members).**

# Gould's Turkey

## Recovery Plan Contents

### Plan Objective:

- Maintain a total minimum population of 175 Gould's turkeys in the Peloncillo Mountains either through natural processes alone or in combination with periodic strategic augmentation.

### Plan Contents:

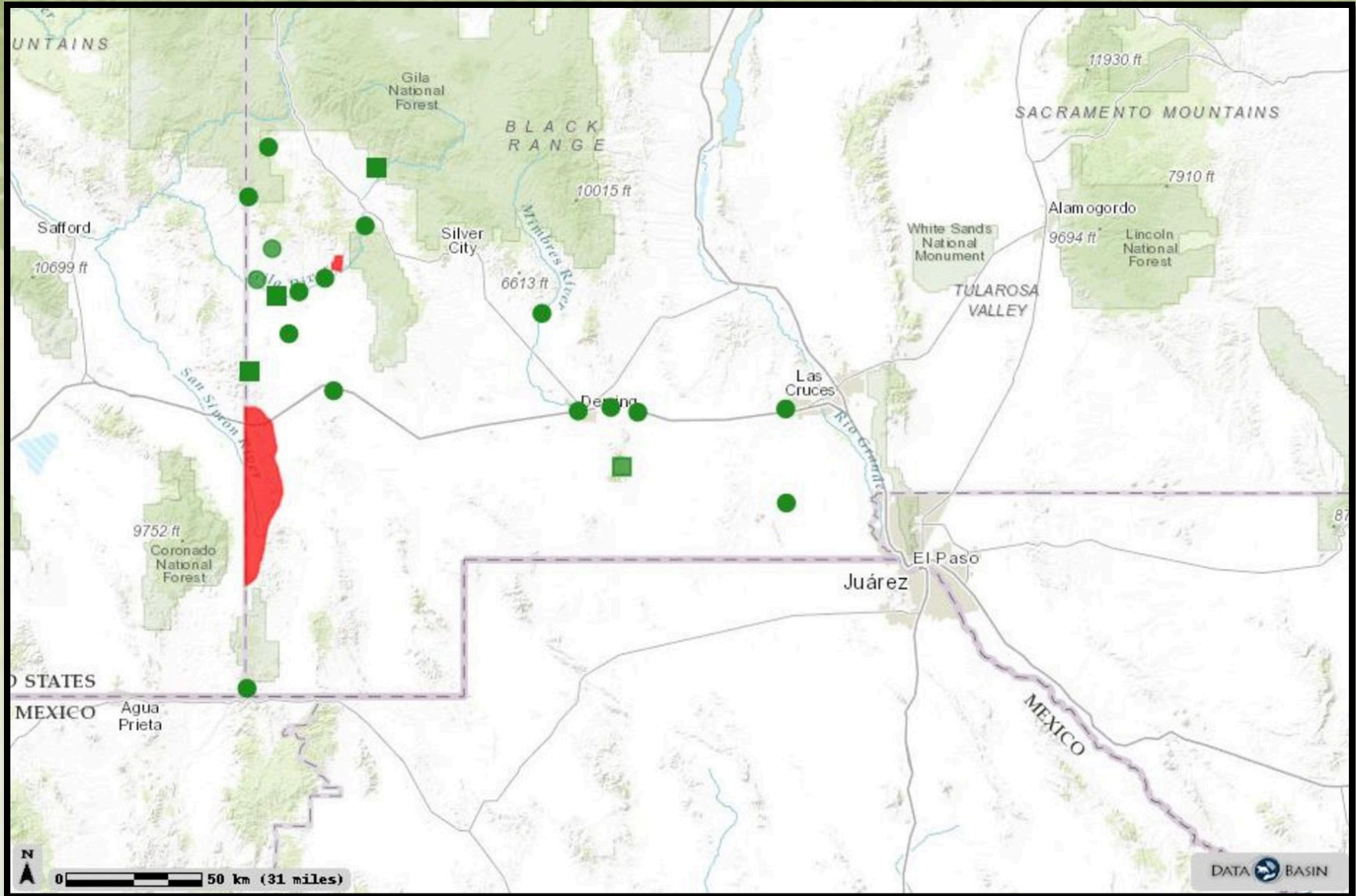
- Natural history summary
- Historic and current distribution and abundance
- Habitat assessment
- Threats to persistence
- Recovery issues and management strategies.



## **NM Gila Monster Habitat & Habits**

- **In New Mexico, occurs in Chihuahuan desert scrub & desert grassland habitats.**
- **Arroyos important – travel & foraging.**
- **Nest predator: mammals, birds, reptiles.**
- **Spends 95% of time in subsurface shelters.**

# NM Gila Monster Distribution







# **Gila Monster Listing Background**

- **Listed as endangered under WCA in 1975.**
- **Principal threat: localized illegal collecting.**
- **Distribution inadequately documented.**



# **Public Participation in Recovery Planning for Gila Monster**

**June 2016:**

- **Recovery plan development announced via press release and email.**
- **Public meetings in Las Cruces (7 attendees) and Silver City (5 attendees).**
- **Advisory Committee formed (16 members).**

# **Gila Monster**

## **Recovery Plan Contents**

### **Plan Objectives:**

- **Conduct field studies to estimate current status & population viability in core historic range.**
- **Establish priorities for habitat & population security and maintenance.**

### **Plan Contents:**

- **Natural history summary**
- **Historic and current distribution and abundance**
- **Habitat assessment**
- **Threats to persistence**
- **Recovery issues and management strategies.**



# Next Steps in Gould's Turkey & Gila Monster Recovery Planning

- **January-February 2017: Draft recovery plans open for public comment. To be announced on website and in news releases.**
- **Next SGC Meeting in 2017: Present final Gould's Turkey and Gila Monster recovery plans to Commission for approval.**

# Questions?

