



Wildlife Management Division

**Turkey
19.31.16 NMAC**

April 5, 2018

**New Mexico State Game Commission Meeting
Clovis, NM**

Proposed Amendments: Turkey 19.31.16 NMAC

- **Adjust youth seasons for calendar dates**
- **Open additional areas for spring turkey**
- **Open additional areas for fall hunting**



Summary of Public Comment

- **13 Written Comments received as of March 29, 2018**
- **Public meetings: Farmington (13), Las Cruces (5), Albuquerque (10)**

Summary of Public Comment

- **Approve of additional spring and fall units (8)**
- **Creation of new youth opportunity in GMU 30 (3)**
- **Would like additional spring primitive hunting opportunities (2)**
- **Change nonresident bag limit (2)**
- **Additional opportunity for Gould's Turkey (2)**
- **Approve of Youth hunt season updates to coincide with weekends (1)**



Proposed Amendments: Turkey 19.31.16 NMAC

- **Adjust youth seasons for calendar dates**

Year	Youth Only - Over the Counter	
	Open	Close
2019	April 12	April 14
2020	April 10	April 12
2021	April 9	April 11
2022	April 8	April 10

Proposed Amendments: Turkey 19.31.16 NMAC

- **Adjust youth seasons for calendar dates**

Hunt and Code	Year	Dates
Youth Only WS Huey Draw TUR-1-105	2019	April 13 -14
	2020	April 11-12
	2021	April 10-11
	2022	April 9-10
Youth Only WS Huey Draw TUR-1-106	2019	April 20-21
	2020	April 18-19
	2021	April 17-18
	2022	April 16-17

Proposed Amendments: Turkey 19.31.16 NMAC

- **Create a Spring youth hunt on Washington Ranch in GMU 30**
 - **1 weekend during regular season**
 - **Up to 10 tags**

- **Change number of Youth Only tags in GMU 2A Rattlesnake canyon closure area from 5 to up to 10**



**Proposed
Amendments:
Turkey
19.31.16 NMAC**

- **Open additional areas for
spring turkey**
 - **Bluebird Mesa WMA**
 - **GMU 33**

The logo of the New Mexico Game & Fish Commission is a circular emblem. It features a central illustration of a bison's head facing forward. The words "NEW MEXICO" are written in a semi-circle above the bison, and "GAME & FISH" is written in a semi-circle below it. The entire emblem is surrounded by a decorative border.

Proposed Amendments: Turkey 19.31.16 NMAC

- **Open additional areas for fall turkey**
 - **Bluebird Mesa WMA**
 - **GMUs: 5A, 39, 51, 52, 53**



Questions?

Statewide Harvest Data

Year	Season	Licenses Sold	No. Hunters Reported	Success Rate	Estimated Harvest	Satisfaction
2011	Spring	9,656	1,091	28%	2926	3.5
2011	Fall	2,431	287	24.7%	502	3.5
2012	Spring	8,524	1,799	n/a	n/a	4
2012	Fall	2,828	956	n/a	n/a	4
2013	Spring	9,284	6,782	20.5%	1894	3.15
2013	Fall	2,989	2,221	15.5%	335	3.08
2014	Spring	8,916	7,297	26.3%	2395	3.35
2014	Fall	3,336	2,742	26.3%	675	3.3
2015	Spring	9,462	7,823	25.8%	2607	3.41
2015	Fall	3,790	3,101	23.9%	680	3.48
2016	Spring	10,159	7,827	24.9%	3036	3.5
2016	Fall	3,842	3,062	19.3%	536	3.18

Harvest reporting was voluntary in 2011 and 2012

Last population estimate (2007): 25,000-30,000 Birds

This estimate was based on field observations in the 1990s

The Department does not currently conduct populations surveys

Gould's Turkey Recovery



Mark Watson- NMDGF

Gould's Turkey Recovery

Plan Objective:

- Maintain a total minimum population of 175 Gould's turkeys in the Peloncillo Mountains either through natural processes alone or in combination with periodic strategic augmentation.

Recovery objectives will be met when:

- Better survey and monitor population distributions and trends
- All Gould's turkey habitat in the Peloncillos has been identified and mapped
- Unoccupied portions of suitable range have been evaluated for translocation potential
- Limiting habitat components have been evaluated and mapped
- Current threats have been identified and managed
- Habitat enhancement projects have been identified and implemented where feasible

Current Gould's Turkey Recovery Efforts

April 2017: Gould's Turkey recovery plan submitted to Commission for approval.

December 2017: Attempted Helicopter Survey to better estimate Gould's Turkey Populations

- Detectability of turkeys from the air was remarkably low due primarily to rugged topography and unfavorable forest characteristics

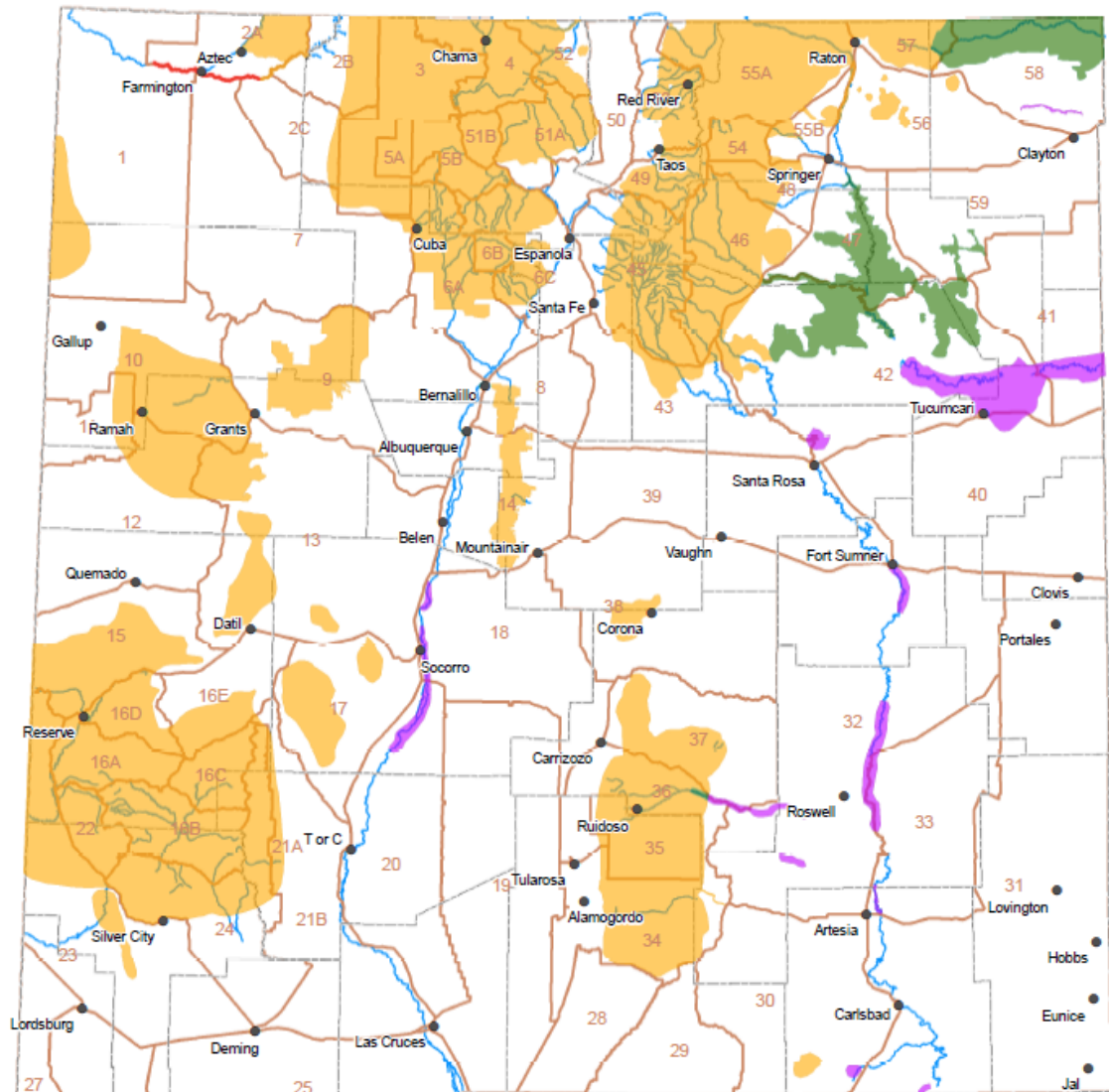
August 2017: Agreement with Mexico to exchange 100 Pronghorn for 100 Gould's Turkey

April 2018: GPS transmitters ordered for habitat use and movement study

Current Gould's Turkey Recovery Efforts

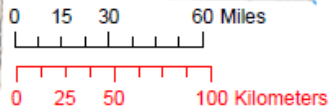
Collaboration with USFS

- Providing several acoustic recorders as a potential means for monitoring gobbler activity in remote portions of the forest
- Identifying areas where HSP (if approved) and Enhancement Hunt funds may be utilized for habitat projects in the Coronado National Forest



Turkey Distribution Subspecies

- Gould's
- Merriam's
- Rio Grande
- Rio Grande X Domestic Hybrid
- Overlapping Distribution of Rio Grande and Merriam's – Potential Hybridization



August 2015

