

# The Lesser Prairie-Chicken Range-wide Conservation Plan Update

presented by

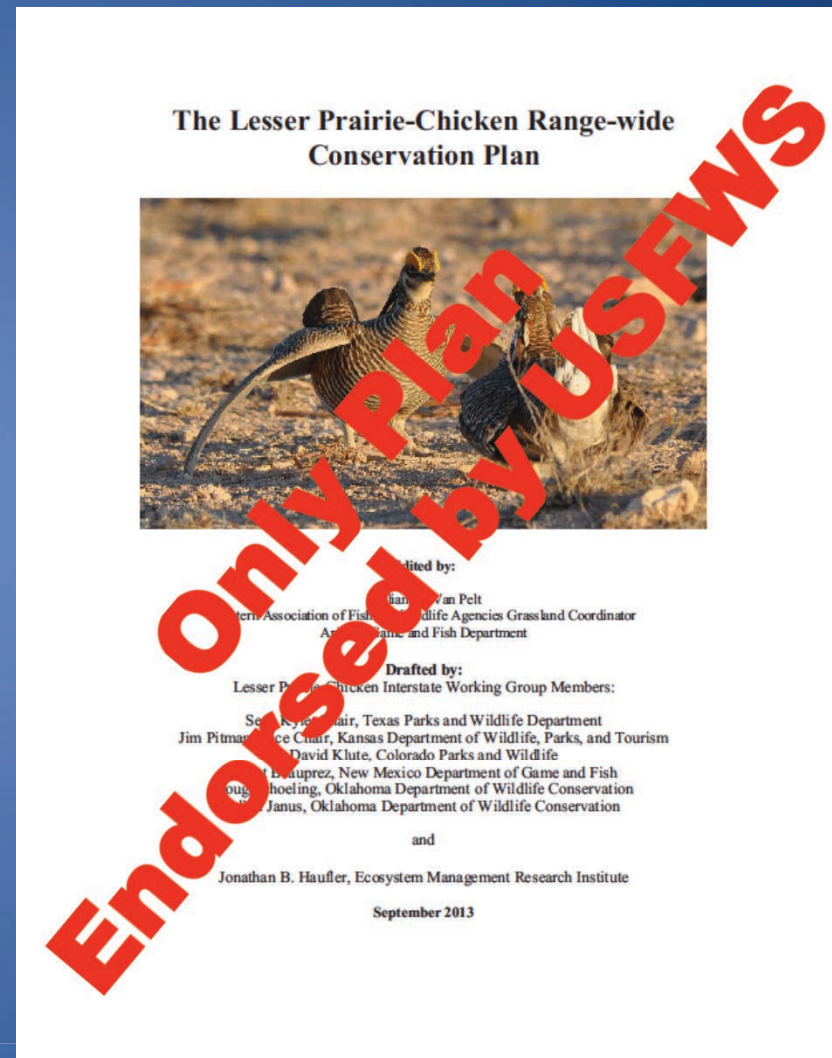
Bill Van Pelt, WAFWA Grassland Coordinator



***Lesser Prairie Chicken Briefings  
New Mexico Game and Fish Commission  
September 29, 2015***

# Plan Objectives

- Ensure long-term existence of LPC through voluntary conservation
- Provide pathway to a timely delisting
- Provide take exemptions
- Retain state management authority for LPC
- No Federal funds needed for implementation



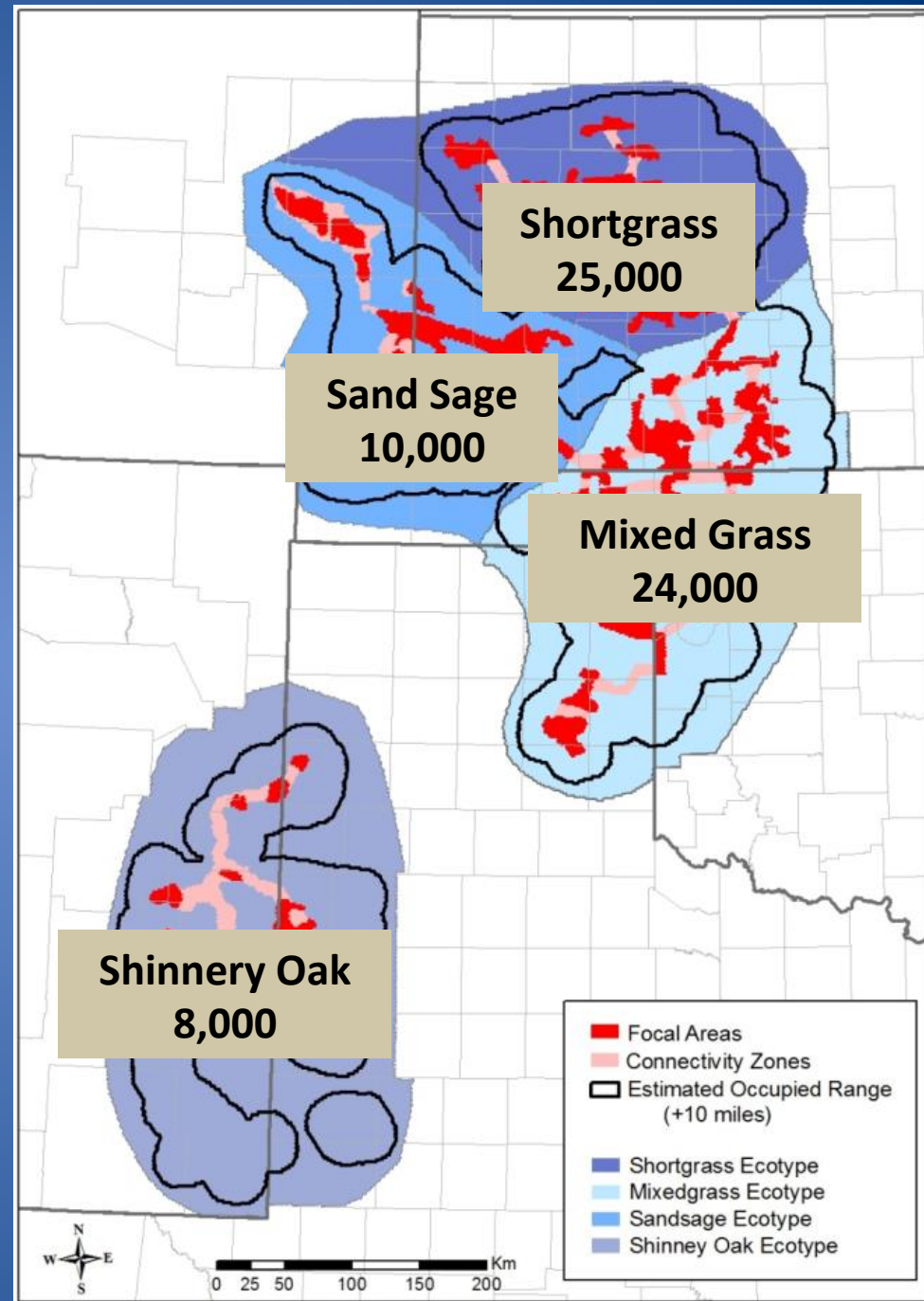
# Population Goal

- 10-yr avg. of 67,000 birds
  - Shortgrass ~25,000
  - Sand Sage ~10,000
  - Mixed grass ~24,000
  - Shinnery Oak ~8,000

## Focal Areas & Connectivity Zones

- Designed to support the majority of the population
- Less than 25% of the total area

Room for sustainable LPC populations and development



# Industry Implementation

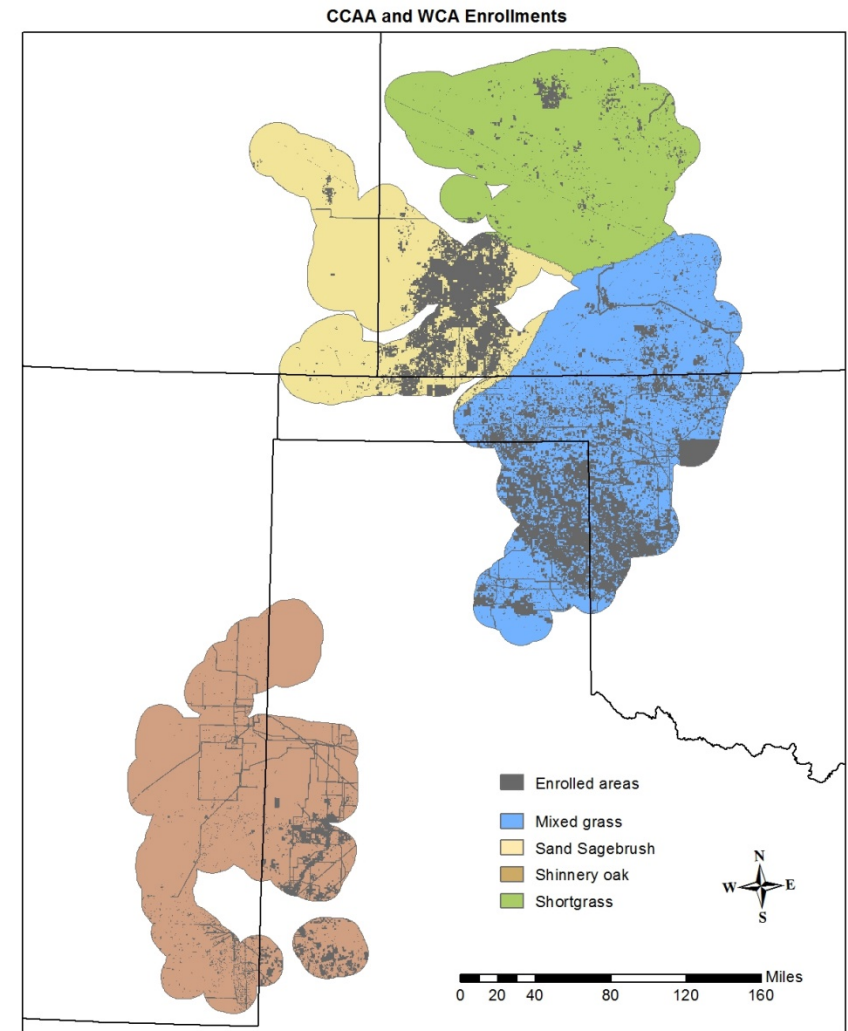
## Industry Enrollment Status

- Continuous enrollment
- All 4 ecoregions and 5 states represented
- Oil and gas, pipelines, electric transmission and distribution, wind, telecommunication



# Industry Enrollment

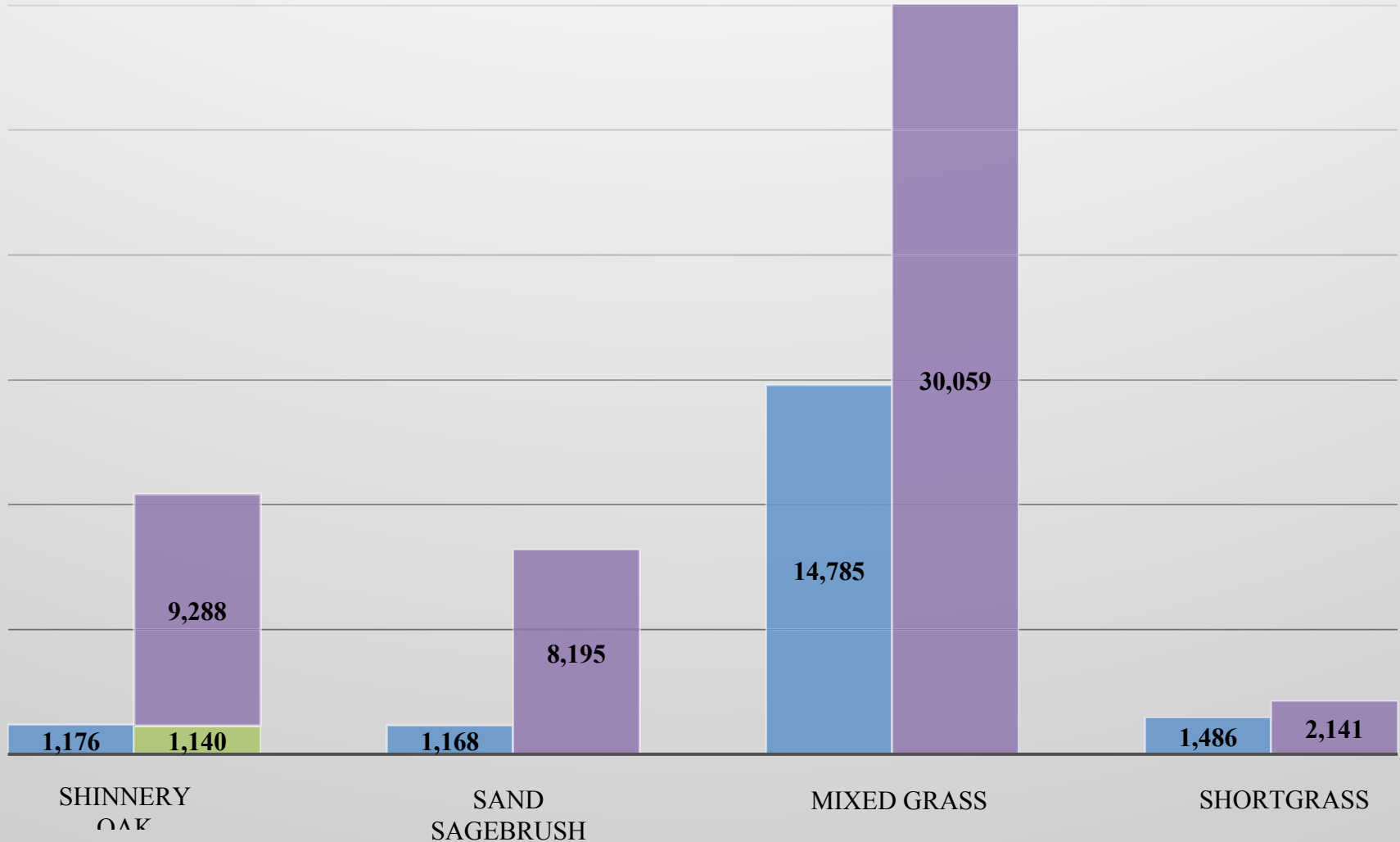
- 181 companies currently enrolled
- Current enrollment acreage is about 11 million acres; 6.4 million acres of that enrollment is oil and gas
- 2015 enrollment and impacts fees collected are \$47.5 million



# WAFWA Mitigation Units

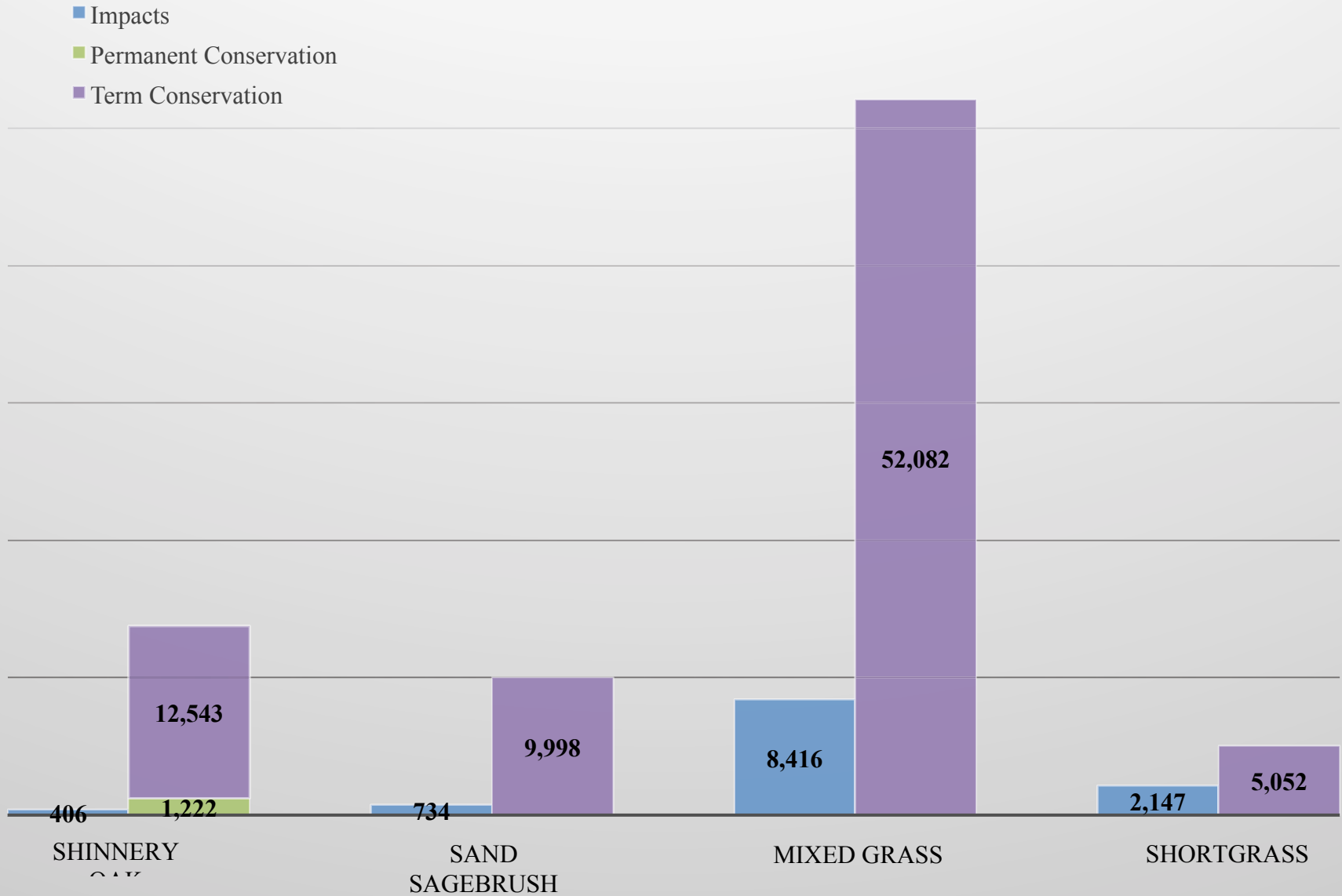
*September 3, 2015*

- Impact Units
- Permanent Offset Units
- Term Offset Units



# Unimpacted Acres Affected

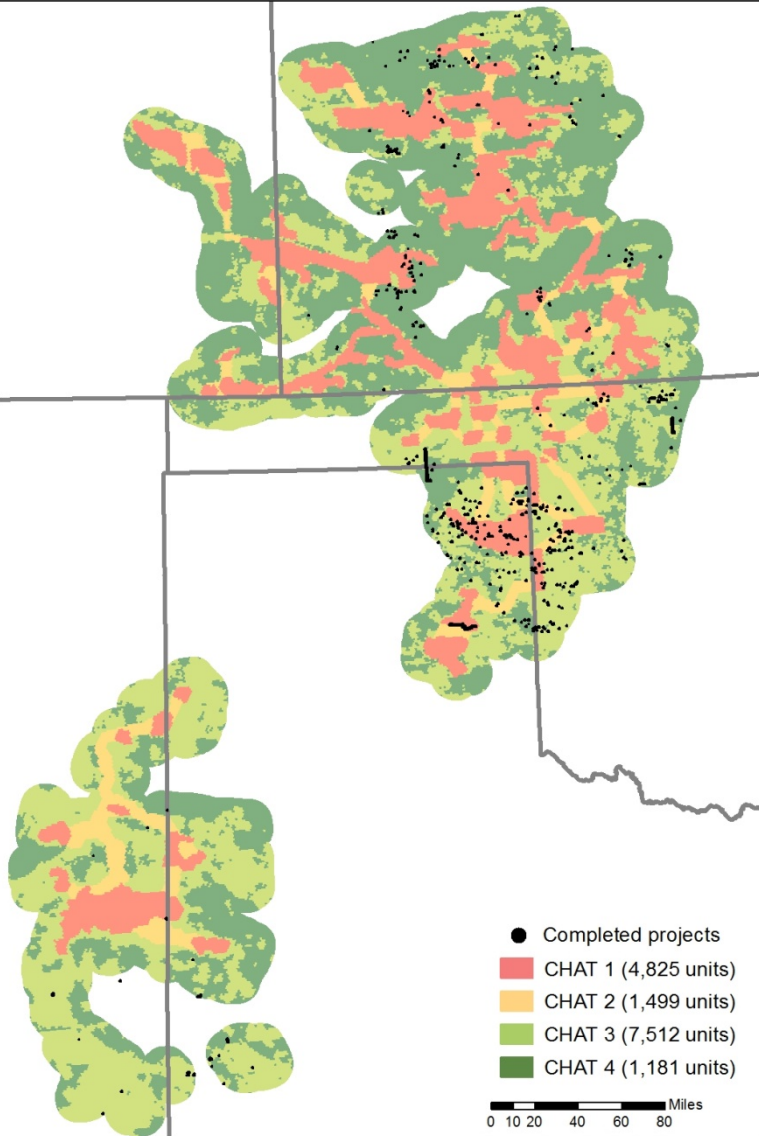
September 3, 2015



\* 8,349 acres of restoration prescribed across all 12 agreements

# LPC Crucial Habitat Assessment Tool (CHAT)

Completed Projects



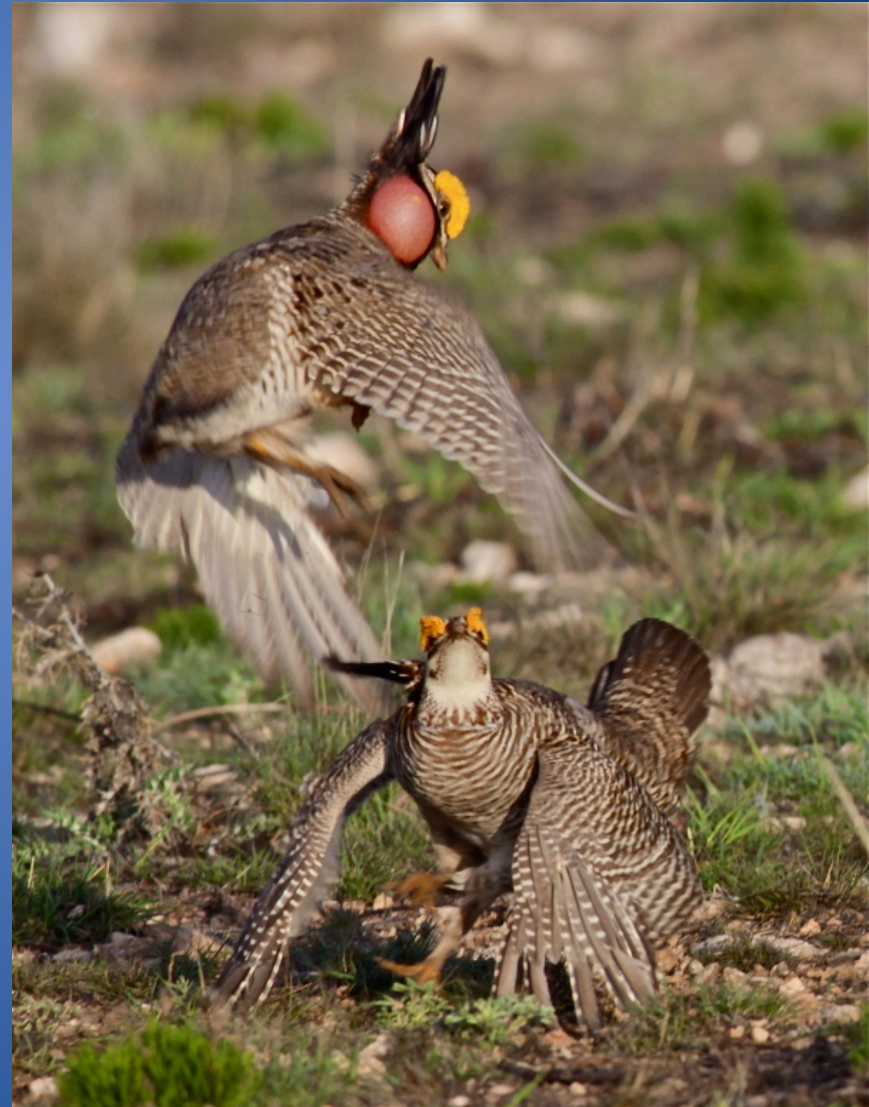
CHAT Category	Description
CHAT 1	Focal Areas
CHAT 2	Connectivity Zones
CHAT 3	Known leks & predicted habitat
CHAT 4	Remainder of range (+10 mi.)



# Conservation Implementation

## Farming and Ranching Enrollment

- Applications were sought in February 2014. We received 65 applications encompassing over 400,000 acres and selected 10 for 10 year terms
- The approximate area covered by the selected applicants is 96,000 acres with over \$14 million going to landowners.
- One fee-title purchase for 1604 acres
- Management Plans were developed
- Continuous enrollment



# Population Survey Results

- Forth year for range-wide aerial surveys
- Results indicate a 25% increase to approximately 29,000 birds
- Increases in 3 of the 4 ecoregions





Questions?