

ALTERNATIVE PRONGHORN HUNT MANAGEMENT



PRONGHORN BIOLOGY

- Female and fawn survival drive population growth
 - Fawn survival important to sustain population levels
- Male-only harvest is biologically sustainable
 - 1 male breeds many females
 - Pregnancy rates >95% regardless of B:D ratios
 - >98% of females are impregnated with twins
- Rut late Aug. through early Oct. (depending on area)



PRONGHORN BIOLOGY

- Pronghorn reach peak horn size @ ~2-4 years
 - Unlike antler growth in deer (~5 years) & elk (~7 years)
- Low harvest of males not necessary for “quality”
 - More people can have opportunity to hunt & harvest a quality buck



PRONGHORN SURVEYS

- Survey method allows for population estimates
- Comparable to previous B:D:F survey data
- Bucks underestimated to some extent
 - Females and yearling males can look similar from aircraft



ALTERNATIVE OPTIONS

- **OPTION 1: Distribute public opportunity through draw, private OTC unlimited**
- **OPTION 2: In “quality” areas offer public and private licenses through draw (similar to deer); “opportunity” areas offer private OTC**
 - Quality & opportunity managed based on buck:doe ratios, hunter density, and satisfaction ratings

CURRENT ISSUES

- **BIOLOGICAL:**
 - Harvest objectives cannot be met because dependent on returned agreements
 - Properties not meeting minimum acreage cannot be hunted
 - Properties that never enroll but have opportunity



CURRENT ISSUES

- Harvest is conservative under A-PLUS
 - Areas where pronghorn are never available for harvest
 - Losing hunting opportunity

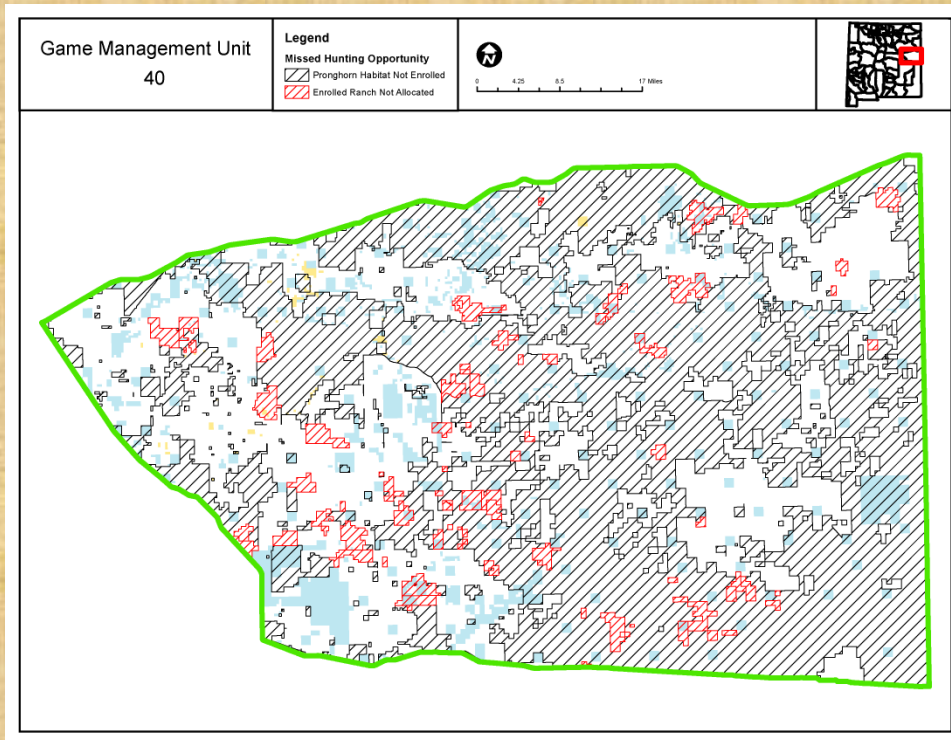
GMU	Minimum qualifying acreage
41	2,428
42	5,869
47	1,459
56	914
57	955
58	2,136
59	1,234



CURRENT ISSUES

- Missed potential opportunity*
- Some ranches that sign up do not qualify
 - Based on acreage

GMU	# Ranches not qualifying
12	19
15	16
18	11
20	6
31	43
32	30
33	13
38	29
39	9
40	51
58	8
TOTAL	265



CURRENT ISSUES

- OTHER ISSUES:
 - Landowners
 - Concerns about accommodating public hunters
 - Don't currently receive allocation for archery, MIP, and youth tags
 - Desire to be more conservative with harvest
 - Public hunters
 - Complaints about ranch assignment restrictions to only 1 property



ALTERNATIVE HUNT MGMT

- Currently hunting below sustainable harvest in some areas
 - Not taking advantage of available opportunity
- Pronghorn hunting could be increased
 - Different increases in some areas depending on survey data
- Still maintain quality hunting opportunities



PRIVATE LAND DEER HUNTING

- Almost exclusively unlimited OTC
 - Exception of 2, 4, & 5A
- Unlimited licenses (during established hunts)
 - Private landowners generally hunt conservatively
 - Observing good buck:doe ratios ($\geq 30:100$) during aerial surveys



PRIVATE LAND DEER HUNTING

	Public	Private
Hunted %	81%	19%
Land status %*	49%	51%
Actual hunted	29,661	6,958

- Statewide deer licenses: 36,619

*excluding tribal, DOD, DOE



PROPOSED PRONGHORN HUNT STRUCTURE

- STATEWIDE
- Proposed statewide pronghorn hunt structure
 - Archery: 2nd Sat. in Aug.
 - 1st Rifle: 4th Sat. in Aug.
 - 2nd Rifle: 4th Sat. in Sept.
 - 3rd Rifle: 1st Sat. in Oct.
 - Youth Rifle: 2nd Sat. in Oct.
 - Mobility Impaired: 4th Sat. in Sept.
 - Maintain current public muzzleloader hunts
 - Potential to create new muzzleloader hunts
 - Going from ~60 public hunt codes to ~150 hunt codes
 - Increase hunt length (rifle hunts increase from 3 up to 5 days)

Proposed Draw

Northeast area:

- Rifle: 56% Increase
- 379 to 590
- Archery: 70% Increase
- 10 to 170
- Youth (Rifle): 65% Increase
- 100 to 165
- Mobility Impaired (Rifle): Maintain current opportunity

Southeast area:

- Rifle: 8% Increase
- 369 to 400
- Archery: 20% Increase
- 210 to 250
- Youth (Rifle): Maintain current opportunity
- Mobility Impaired (Rifle): Maintain current opportunity

Northwest Area:

- Rifle: 18% Increase
- 17 to 20
- Archery: 33% Increase
- 15 to 20
- Youth (Rifle): Maintain Current

Southwest area:

- Rifle: 48% Increase
- 122 to 180
- Archery: 11% Increase
- 122 to 135
- Youth (Rifle): 19% Increase
- 37 to 44
- Mobility Impaired (Rifle): Maintain current opportunity

CURRENT INPUT

- Concern over trespass issues (on both public and private)
- Concern about over-harvesting
- 5 day Rifle hunts (both for and against)
- Would like to see smaller GMUs in some SE GMUs
- Plains of San Augustine landowners want to see special mgmt. area

QUESTIONS?



NE AREA

- Population estimate: ~30,000
 - Largest population in NM
- 37 bucks*: 100 does: 40 fawns
- Intermixed private land and State Land Office



GMU 41

Publicly accessible land: 18%

DEER

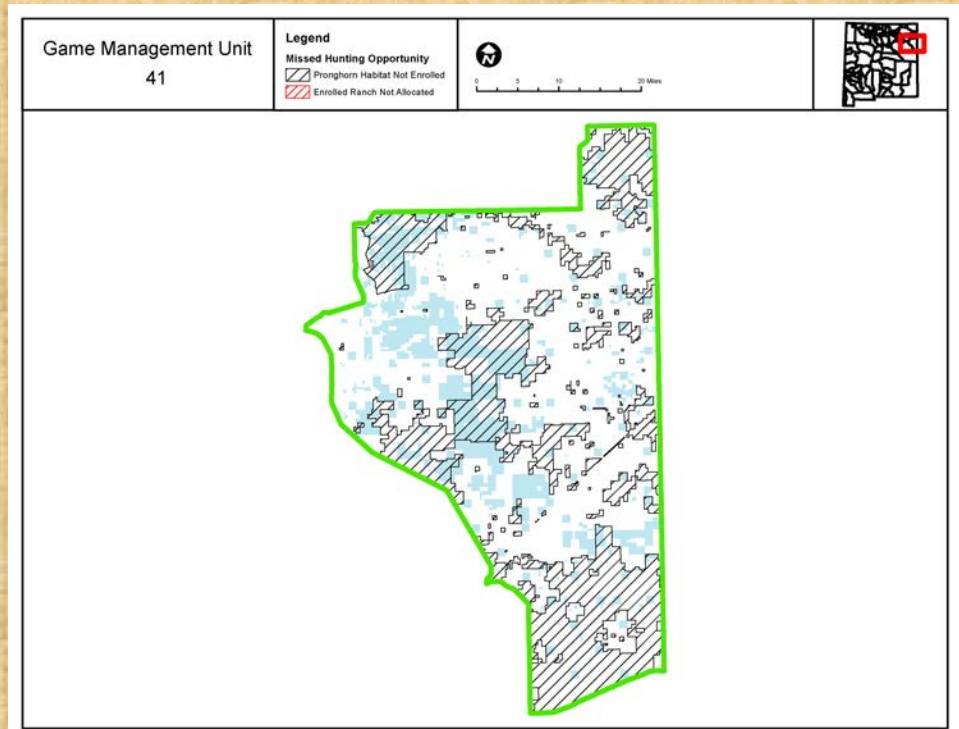
- Private licenses: 126
- Public draw licenses: 136
 - 52% of licenses are public draw on public land.

PRONGHORN Hunting opportunities currently being issued through A-PLUS

- Current Private (rifle)
 - Allocated: 247
 - **Unconverted: 35**
 - **Converted: 212**
- Current Public (rifle)
 - Draw licenses: 49
- **Total Current Opportunity: 261**

PRONGHORN PROPOSED

- Proposed Private (rifle)
 - **Expected new: 300**
- Proposed Public (rifle)
 - **Proposed: 100***
- **Total Expected Opportunity: 400**



PROPOSED PUBLIC HUNT STRUCTURE				
Hunt	Date	Duration	Licenses	Bag
Youth*	2 nd Saturday in October	Up to 5 days	15	ES
Archery	2 nd Saturday in August	9 days	30	MB
1st Rifle	4th Saturday in Aug	Up to 5 days	35	MB
2nd Rifle	4th Saturday in Sept	Up to 5 days	30	MB
MIP	4 th Saturday in Sept	Up to 5 days	5	MB
3rd Rifle	1st Saturday in Oct	Up to 5 days	35	MB
Subtotal Rifle			100*	MB
Total all Methods			150	

GMU 42

Publicly accessible land: 6%

DEER

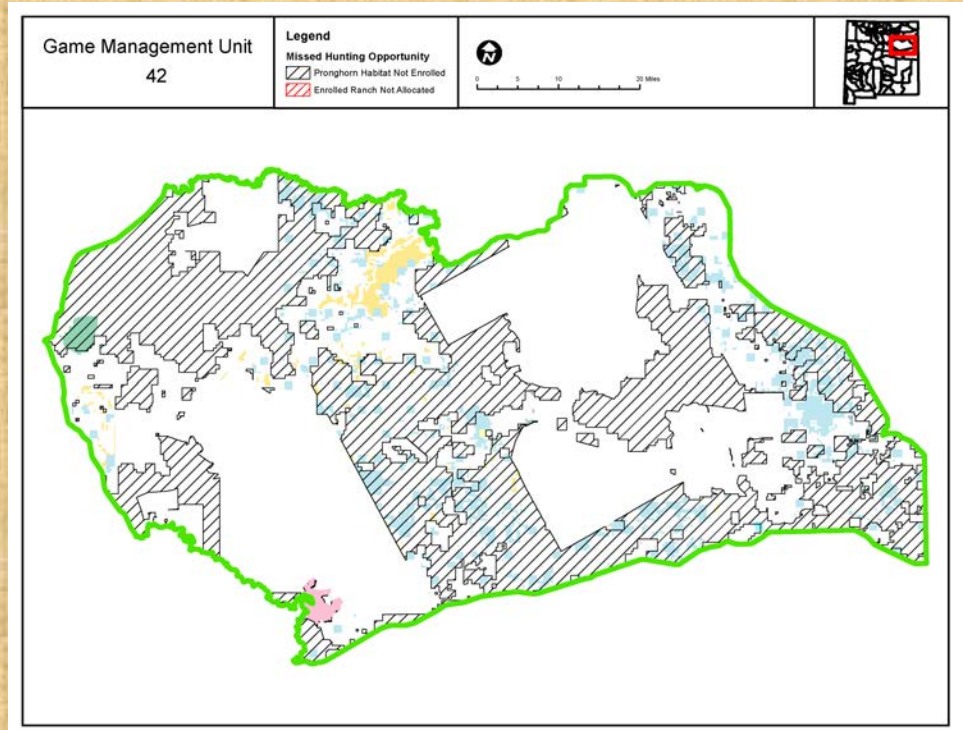
- Private licenses: 204
- Public draw licenses: 88
 - 30% of licenses are public draw on public land.

PRONGHORN Hunting opportunities currently being issued through A-PLUS

- Current Private (rifle)
 - Allocated: 128
 - **Unconverted: 56**
 - **Converted: 72**
- Current Public (rifle)
 - Draw licenses: 0
- **Total Current Opportunity: 72**

PRONGHORN PROPOSED

- Proposed Private (rifle)
 - **Expected new: 80**
- Proposed Public (rifle)
 - **Proposed: 50***
- **Total Expected Opportunity: 130**



PROPOSED PUBLIC HUNT STRUCTURE				
Hunt	Date	Duration	Licenses	Bag
Youth*	2 nd Saturday in October	Up to 5 days	15	ES
Archery	2 nd Saturday in August	9 days	5	MB
1st Rifle	4th Saturday in Aug	Up to 5 days	20	MB
2nd Rifle	4th Saturday in Sept	Up to 5 days	10	MB
MIP	4 th Saturday in Sept	Up to 5 days	NA	
3rd Rifle	1st Saturday in Oct	Up to 5 days	20	MB
Subtotal Rifle			50*	MB
Total all Methods			70	

GMU 8 & 43

Publicly accessible land: 20%

DEER

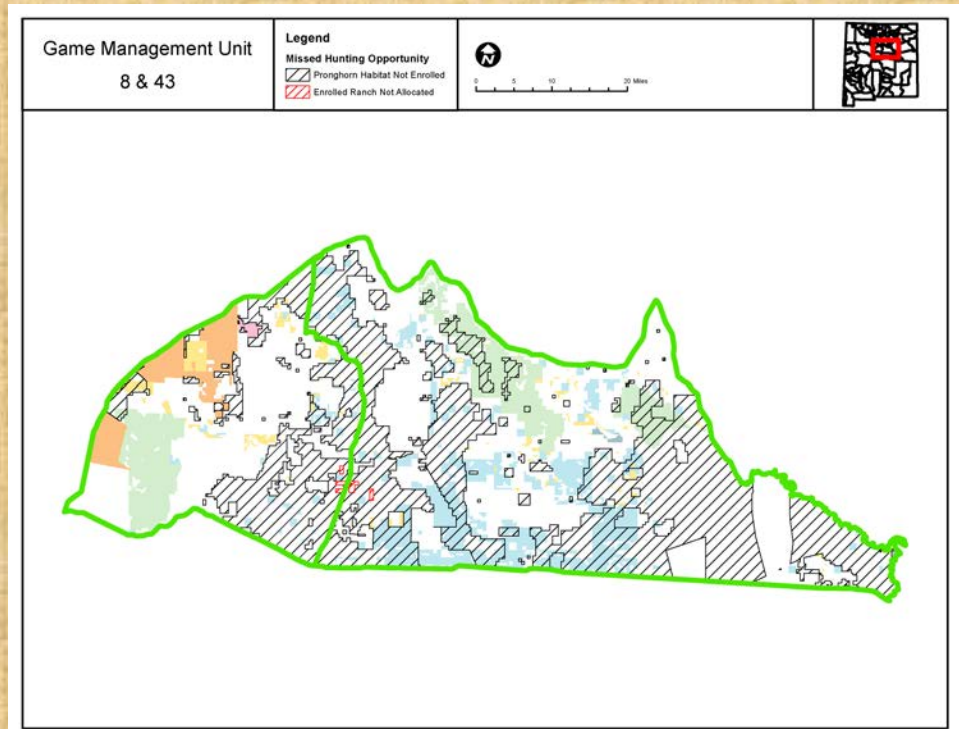
- Private licenses: 76
- Public draw licenses: 153
 - 67% of licenses are public draw on public land.

PRONGHORN Hunting opportunities currently being issued through A-PLUS

- Current Private (rifle)
 - Allocated: 38
 - **Unconverted: 13**
 - **Converted: 25**
- Current Public (rifle)
 - Draw licenses: 9
- **Total Current Opportunity: 34**

PRONGHORN PROPOSED

- Proposed Private (rifle)
 - **Expected new: 30**
- Proposed Public (rifle)
 - **Proposed: 10***
- **Total Expected Opportunity: 40**



PROPOSED PUBLIC HUNT STRUCTURE				
Hunt	Date	Duration	Licenses	Bag
Youth*	2 nd Saturday in October	Up to 5 days	NA	
Archery	2 nd Saturday in August	9 days	5	MB
1st Rifle	4th Saturday in Aug	Up to 5 days	10	MB
2nd Rifle	4th Saturday in Sept	Up to 5 days	NA	
MIP	4 th Saturday in Sept	Up to 5 days	NA	
3rd Rifle	1st Saturday in Oct	Up to 5 days	NA	
Subtotal Rifle			10*	MB
Total all Methods			15	

GMU 47

Publicly accessible land: 20%

DEER

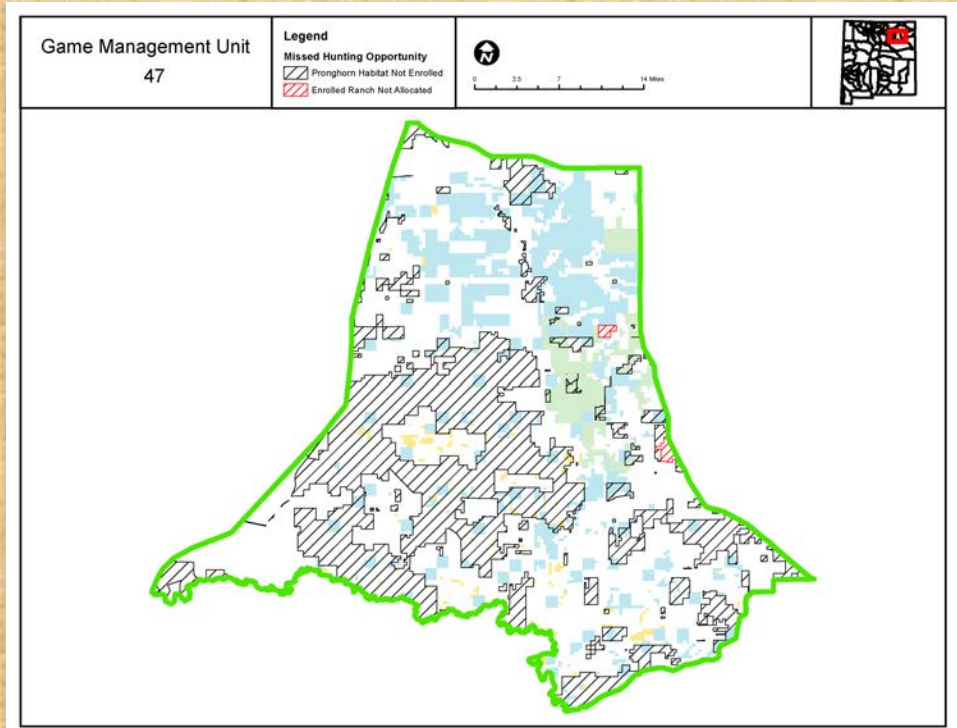
- Private licenses: 80
- Public draw licenses: 65
 - 45% of licenses are public draw on public land.

PRONGHORN Hunting opportunities currently being issued through A-PLUS

- Current Private (rifle)
 - Allocated: 114
 - **Unconverted: 48**
 - **Converted: 66**
- Current Public (rifle)
 - Draw licenses: 42
- **Total Current Opportunity: 108**

PRONGHORN PROPOSED

- Proposed Private (rifle)
 - **Expected new: 90**
- Proposed Public (rifle)
 - **Proposed: 50***
- **Total Expected Opportunity: 140**



PROPOSED PUBLIC HUNT STRUCTURE				
Hunt	Date	Duration	Licenses	Bag
Youth*	2 nd Saturday in October	Up to 5 days	5	ES
Archery	2 nd Saturday in August	9 days	10	MB
1st Rifle	4th Saturday in Aug	Up to 5 days	20	MB
2nd Rifle	4th Saturday in Sept	Up to 5 days	10	MB
MIP	4 th Saturday in Sept	Up to 5 days	5	MB
3rd Rifle	1st Saturday in Oct	Up to 5 days	20	MB
Subtotal Rifle			50*	MB
Total all Methods			70	

GMU 56

Publicly accessible land: 19%

DEER

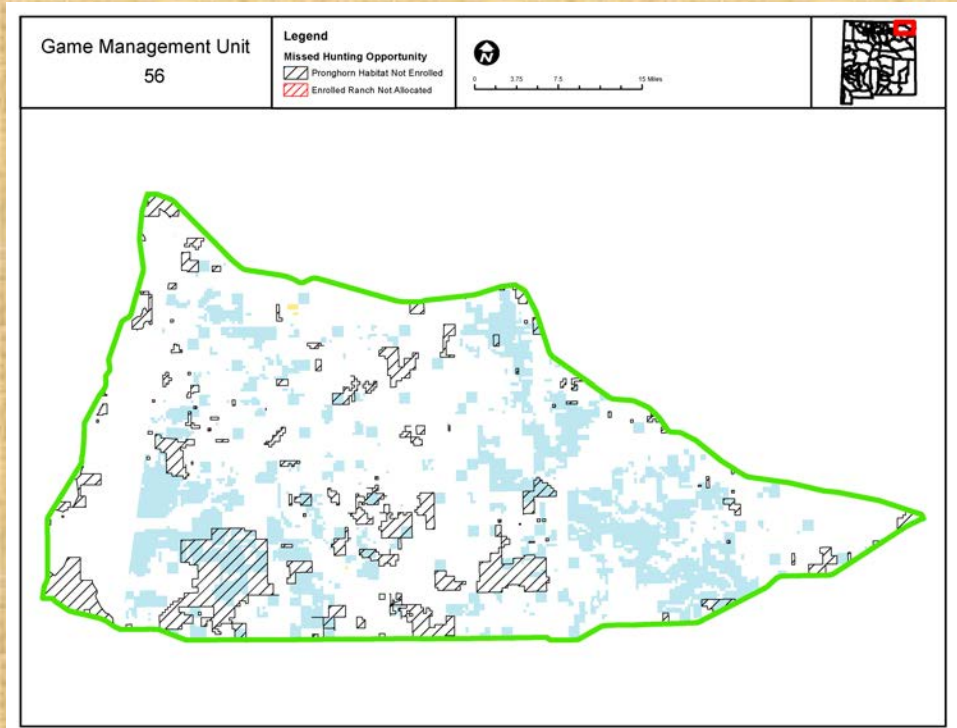
- Private licenses: 62
- Public draw licenses: 60
 - 49% of licenses are public draw on public land.

PRONGHORN Hunting opportunities currently being issued through A-PLUS

- Current Private (rifle)
 - Allocated: 703
 - **Unconverted: 177**
 - **Converted: 526**
- Current Public (rifle)
 - Draw licenses: 120
- **Total Current Opportunity: 646**

PRONGHORN PROPOSED

- Proposed Private (rifle)
 - **Expected new: 630**
- Proposed Public (rifle)
 - **Proposed: 140***
- **Total Expected Opportunity: 770**



PROPOSED PUBLIC HUNT STRUCTURE				
Hunt	Date	Duration	Licenses	Bag
Youth*	2 nd Saturday in October	Up to 5 days	50	ES
Archery	2 nd Saturday in August	9 days	40	MB
1st Rifle	4th Saturday in Aug	Up to 5 days	50	MB
2nd Rifle	4th Saturday in Sept	Up to 5 days	40	MB
MIP	4 th Saturday in Sept	Up to 5 days	5	MB
3rd Rifle	1st Saturday in Oct	Up to 5 days	50	MB
Subtotal Rifle			140*	MB
Total all Methods			235	

GMU 57

Publicly accessible land: 11%

DEER

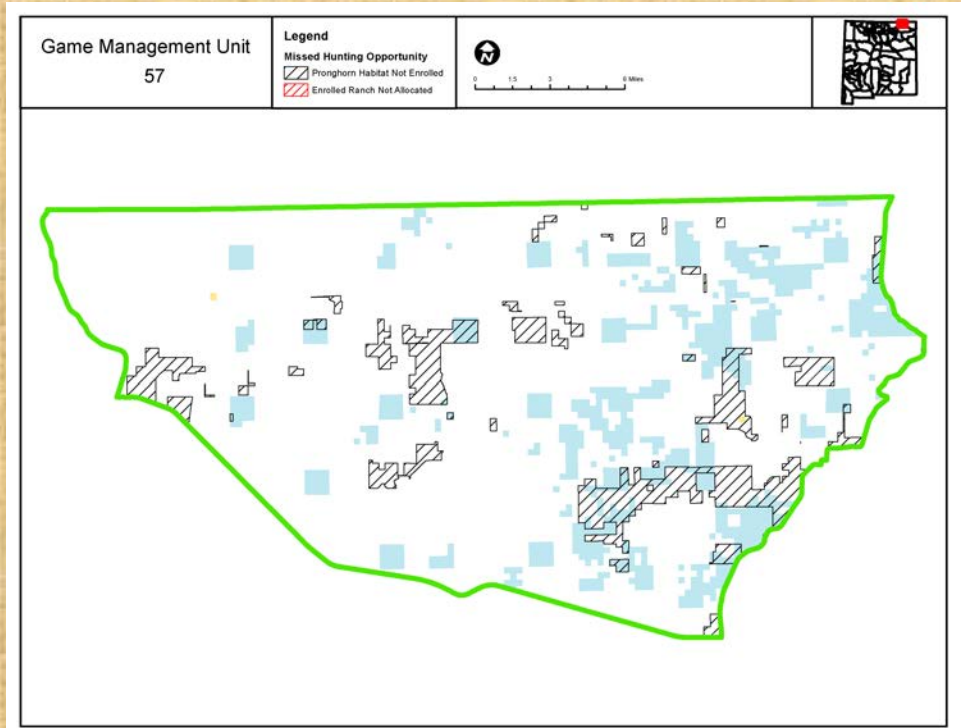
- Private licenses: 175
- Public draw licenses: 121
 - 41% of licenses are public draw on public land.

PRONGHORN Hunting opportunities currently being issued through A-PLUS

- Current Private (rifle)
 - Allocated: 71
 - **Unconverted: 18**
 - **Converted: 53**
- Current Public (rifle)
 - Draw licenses: 5
- **Total Current Opportunity: 58**

PRONGHORN PROPOSED

- Proposed Private (rifle)
 - **Expected new: 70**
- Proposed Public (rifle)
 - **Proposed: 20***
- **Total Expected Opportunity: 90**



PROPOSED PUBLIC HUNT STRUCTURE				
Hunt	Date	Duration	Licenses	Bag
Youth*	2 nd Saturday in October	Up to 5 days	15	ES
Archery	2 nd Saturday in August	9 days	10	MB
1st Rifle	4th Saturday in Aug	Up to 5 days	10	MB
2nd Rifle	4th Saturday in Sept	Up to 5 days	10	MB
MIP	4 th Saturday in Sept	Up to 5 days	NA	
3rd Rifle	1st Saturday in Oct	Up to 5 days	NA	
Subtotal Rifle			20*	MB
Total all Methods			45	

GMU 58

Publicly accessible land: 18%

DEER

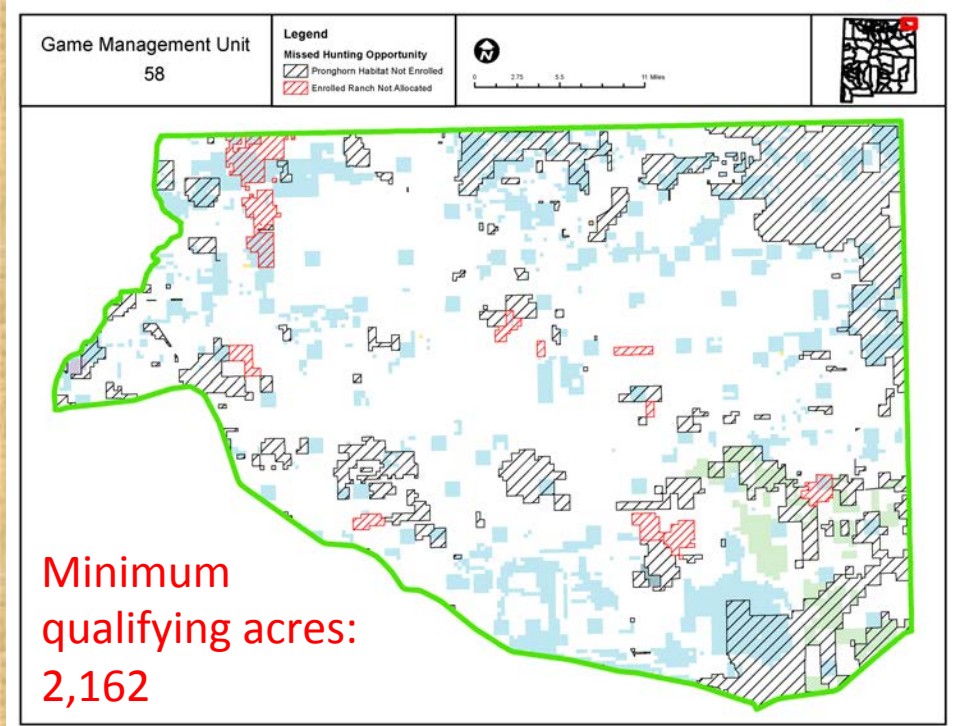
- Private licenses: 124
- Public draw licenses: 120
 - 49% of licenses are public draw on public land.

PRONGHORN Hunting opportunities currently being issued through A-PLUS

- Current Private (rifle)
 - Allocated: 213
 - **Unconverted: 43**
 - **Converted: 170**
- Current Public (rifle)
 - Draw licenses: 34
- **Total Current Opportunity: 204**

PRONGHORN PROPOSED

- Proposed Private (rifle)
 - **Expected new: 190**
- Proposed Public (rifle)
 - **Proposed: 100***
- **Total Expected Opportunity: 290**



PROPOSED PUBLIC HUNT STRUCTURE				
Hunt	Date	Duration	Licenses	Bag
Youth*	2 nd Saturday in October	Up to 5 days	15	ES
Archery	2 nd Saturday in August	9 days	30	MB
1 st Rifle	4 th Saturday in Aug	Up to 5 days	40	MB
2 nd Rifle	4 th Saturday in Sept	Up to 5 days	20	MB
MIP	4 th Saturday in Sept	Up to 5 days	5	MB
3 rd Rifle	1 st Saturday in Oct	Up to 5 days	40	MB
Subtotal Rifle			100*	MB
Total all Methods			150	

GMU 59

Publicly accessible land: 22%

DEER

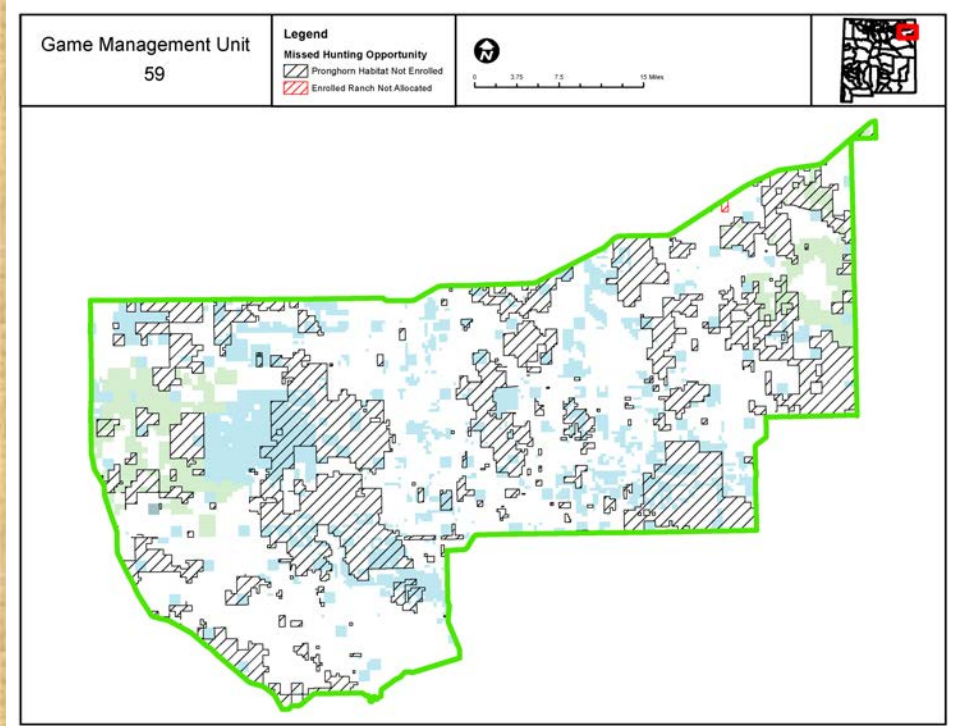
- Private licenses: 134
- Public draw licenses: 134
 - 50% of licenses are public draw on public land.

PRONGHORN Hunting opportunities currently being issued through A-PLUS

- Current Private (rifle)
 - Allocated: 398
 - **Unconverted: 121**
 - **Converted: 277**
- Current Public (rifle)
 - Draw licenses: 128
- **Total Current Opportunity: 405**

PRONGHORN PROPOSED

- Proposed Private (rifle)
 - **Expected new: 330**
- Proposed Public (rifle)
 - **Proposed: 120***
- **Total Expected Opportunity: 450**



PROPOSED PUBLIC HUNT STRUCTURE				
Hunt	Date	Duration	Licenses	Bag
Youth*	2 nd Saturday in October	Up to 5 days	50	ES
Archery	2 nd Saturday in August	9 days	40	MB
1st Rifle	4th Saturday in Aug	Up to 5 days	45	MB
2nd Rifle	4th Saturday in Sept	Up to 5 days	30	MB
MIP	4 th Saturday in Sept	Up to 5 days	10	MB
3rd Rifle	1st Saturday in Oct	Up to 5 days	45	MB
Subtotal Rifle			120*	MB
Total all Methods			220	

GMUs 46, 48, 54, and 55

- No public draw hunt
- Hunt date to match public hunt dates in surrounding GMUs

PRONGHORN

- Current private:
 - Allocated: 381
 - Converted: 180
 - Unconverted: 201
- Expected private rifle:
 - ~280 licenses

PROPOSED PUBLIC HUNT STRUCTURE			
Hunt	Date	Duration	Bag
Youth*	2 nd Saturday in October	Up to 5 days	ES
Archery	2 nd Saturday in August	9 days	MB
1st Rifle	4th Saturday in Aug	Up to 5 days	MB
2nd Rifle	4th Saturday in Sept	Up to 5 days	MB
MIP	4 th Saturday in Sept	Up to 5 days	MB
3rd Rifle	1st Saturday in Oct	Up to 5 days	MB
Total			

NE AREA SUMMARY

- Increase public draw licenses
 - Rifle: 56% Increase
 - 379 → 590
 - Archery: 70% Increase
 - 100 → 170
 - Youth (Rifle): 65% Increase
 - 100 → 165
 - Mobility Impaired (Rifle): Maintain current opportunity



Tres Piedras

- Population estimate: ~500-700
 - Survey does not include high elevation areas
- 21 bucks*: 100 does: 41 fawns
- Predominately BLM and USFS property
 - Some private land ranches and tracts interspersed
- High elevation population
 - Some pronghorn move into Cruces Basin Wilderness and surrounding mountains
 - Pronghorn intermix with those in GMU 4



GMU 50 & 52*

Publicly accessible land: 80%

DEER

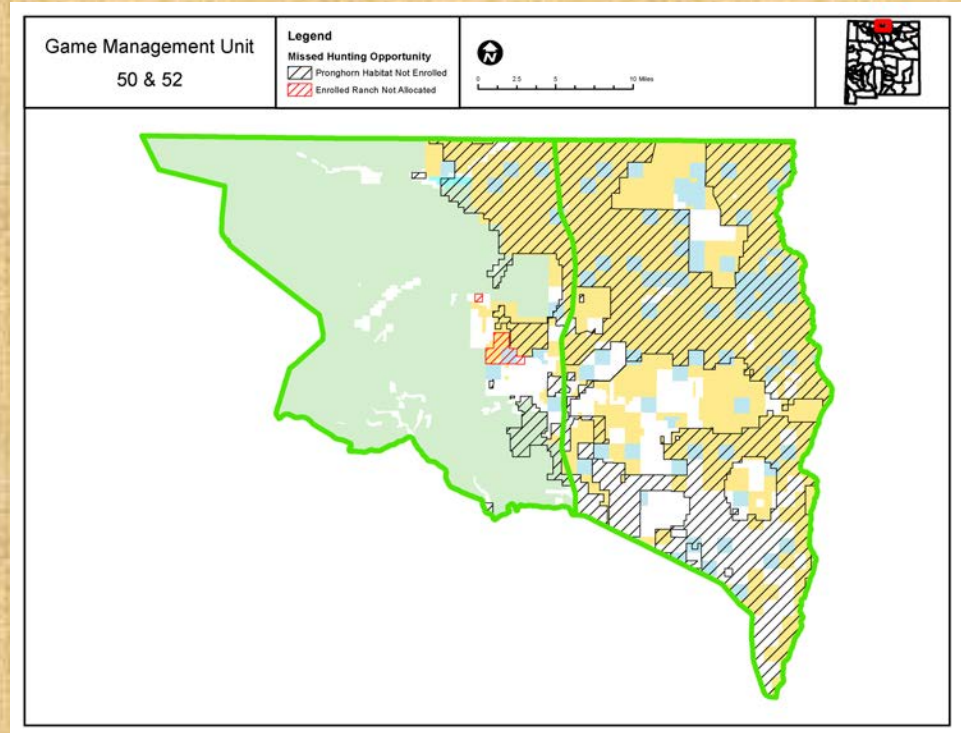
- Private licenses: 386
- Public draw licenses: 43
 - 90% of licenses are public draw on public land.

PRONGHORN Hunting opportunities currently being issued through A-PLUS

- Current Private (muzzleloader)
 - Allocated: 15
 - **Unconverted: 2**
 - **Converted: 13**
- Current Public (rifle)
 - Draw licenses: 100
- **Total Current Opportunity: 113**

PRONGHORN PROPOSED

- Proposed Private (muzzleloader)
 - **Expected new: 20**
- Proposed Public (muzzleloader)
 - **Proposed: 140***
- **Total Expected Opportunity: 160**



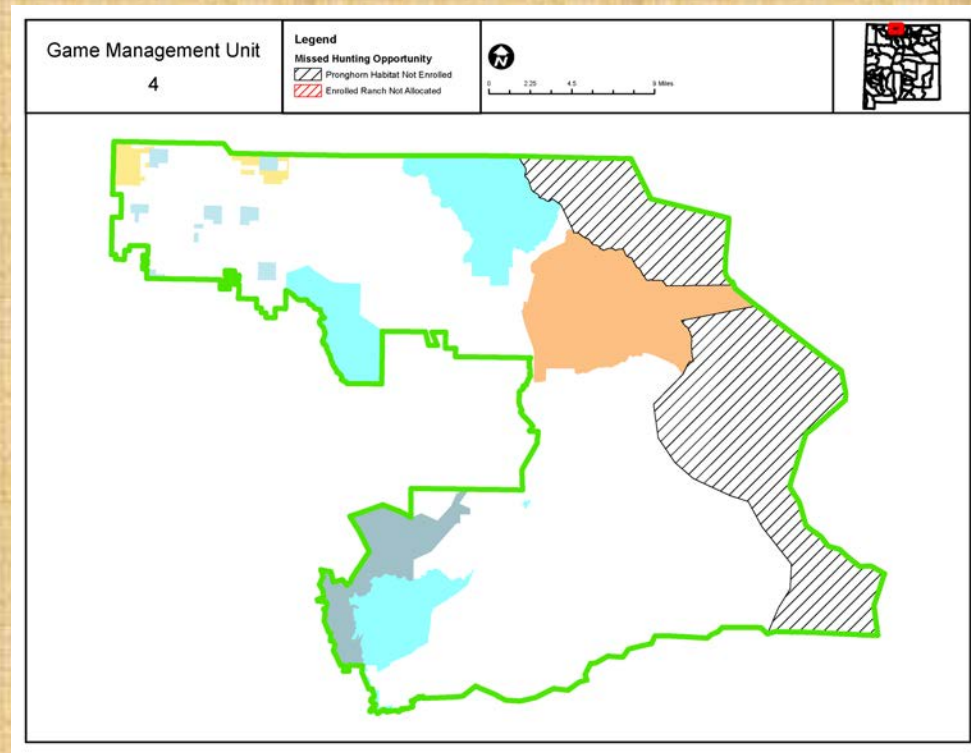
PROPOSED PUBLIC HUNT STRUCTURE			
Hunt	Date	Licenses	Bag
Youth Muzzleloader	Aug 3-7	40	ES
1 st Muzzleloader	Aug 17-21	50	MB
2 nd Muzzleloader	Aug 24-28	50	MB
Total		140*	

GMU 4

- Pronghorn are on private land on eastern portion of GMU

PRONGHORN

- Not previously hunted
- Expected private rifle:
 - ~30 licenses



PROPOSED HUNT STRUCTURE		
Hunt	Date	Bag
Youth Muzzleloader	Aug 3-7	ES
1 st Muzzleloader	Aug 17-21	MB
2 nd Muzzleloader	Aug 24-28	MB
Total		

Tres Piedras Summary

- No change to weapon type or total public tag numbers from current allocation
 - Propose to separate into 2 muzzleloader hunts
- Open GMU 4 to hunting



SE AREA

- Population estimate: ~14,000
 - 2nd largest population in NM
- 29 bucks*: 100 does: 38 fawns
- Intermixed private land, BLM, and State Land Office



GMU 18

Publicly accessible land: 57%

DEER

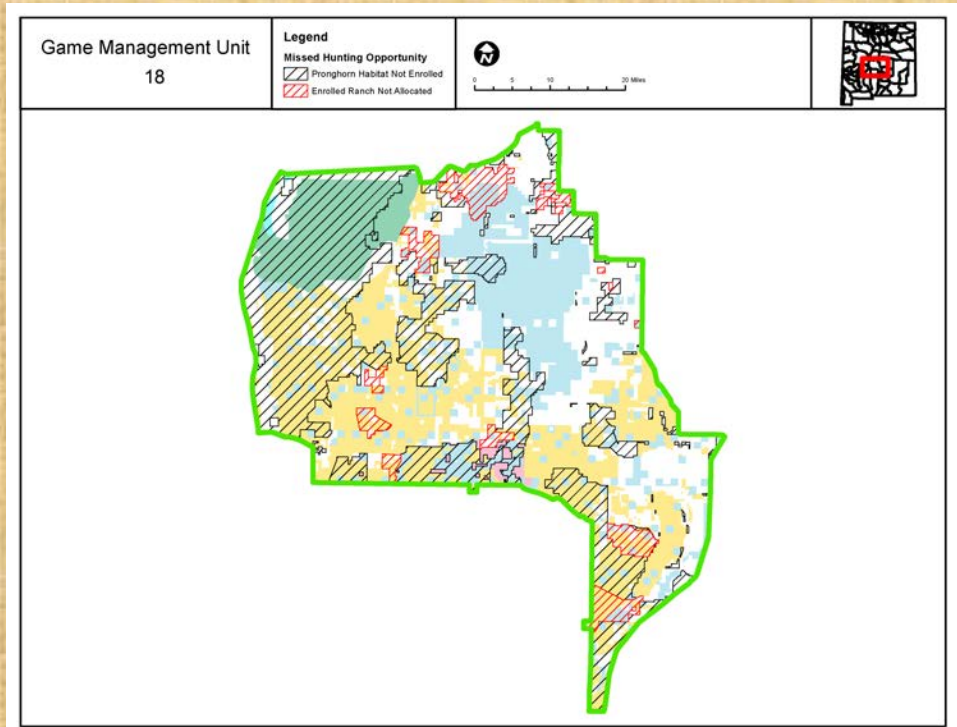
- Private licenses: 70
- Public draw licenses: 300
 - 81% of licenses are public draw on public land.

PRONGHORN Hunting opportunities currently being issued through A-PLUS

- Current Private (rifle)
 - Allocated: 82
 - **Unconverted: 21**
 - **Converted: 61**
- Current Public (rifle)
 - Draw licenses: 52
- **Total Current Opportunity: 113**

PRONGHORN PROPOSED

- Proposed Private (rifle)
 - **Expected new: 90**
- Proposed Public (rifle)
 - **Proposed: 20***
- **Total Expected Opportunity: 110**



PROPOSED PUBLIC HUNT STRUCTURE				
Hunt	Date	Duration	Licenses	Bag
Youth*	2 nd Saturday in October	Up to 5 days	NA	
Archery	2 nd Saturday in August	9 days	10	MB
1st Rifle	4th Saturday in Aug	Up to 5 days	10	MB
2nd Rifle	4th Saturday in Sept	Up to 5 days	10	MB
MIP	4 th Saturday in Sept	Up to 5 days	NA	
3rd Rifle	1st Saturday in Oct	Up to 5 days	NA	
Subtotal Rifle			20*	MB
Total all Methods			30	

GMU 28

- Ft. Bliss/McGregor Range
 - NMDGF and Dept. of Defense coordinate public hunting
- No proposed change to hunt structure and tag allocations

<u>Proposed Public Hunt Structure</u>			
Hunt	Date	Licenses	Bag
Youth	Aug 17-21	NA	
Archery	Sept 1-24	NA	
1st Rifle	Sept 1-2	5	MB
MIL	Sept 1-2	10	MB
2nd Rifle	Oct 5-9	NA	
MIP	Sept 1-2	10	MB
3rd Rifle	Oct 12-16	NA	
Total		15	

GMU 29

Publicly accessible land: 84%

DEER

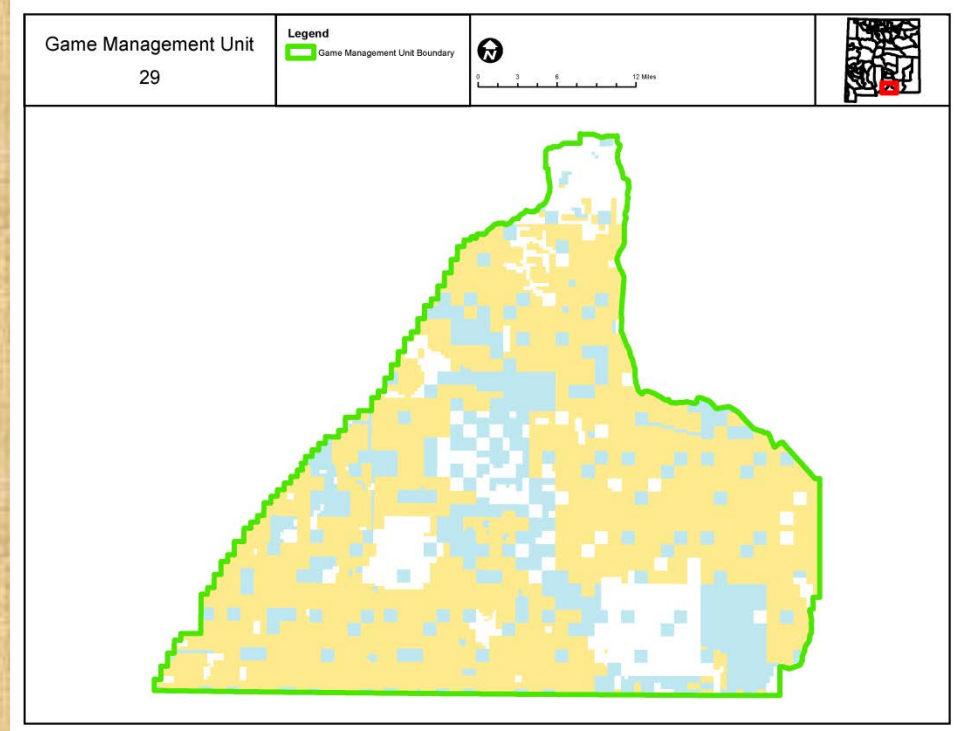
- Private licenses: 559
- Public draw licenses: 23
 - 96% of licenses are public draw on public land.

PRONGHORN Hunting opportunities currently being issued through A-PLUS

- Current Private (muzzleloader)
 - Allocated: 9
 - **Unconverted: 6**
 - **Converted: 3**
- Current Public (muzzleloader)
 - Draw licenses: 35
- **Total Current Opportunity: 38**

PRONGHORN PROPOSED

- Proposed Private (muzzleloader)
 - **Expected new: 5**
- Proposed Public (muzzleloader)
 - **Proposed: 40***
- **Total Expected Opportunity: 45**



Proposed Public Hunt Structure			
Hunt	Date	Licenses	Bag
Youth Muzzleloader	Aug 17-21	5	ES
Archery	Sept 1-24	NA	
1st Muzzleloader	Sept 28-Oct 2	20	MB
1st Rifle	Sept 28-Oct 2	NA	
2nd Rifle	Oct 5-9	NA	
MIP	Oct 5-9	NA	
2nd Muzzleloader	Oct 12-16	20	MB
3rd Rifle	Oct 12-16	NA	
Total		45	

GMU 30

Publicly accessible land: 75%

DEER

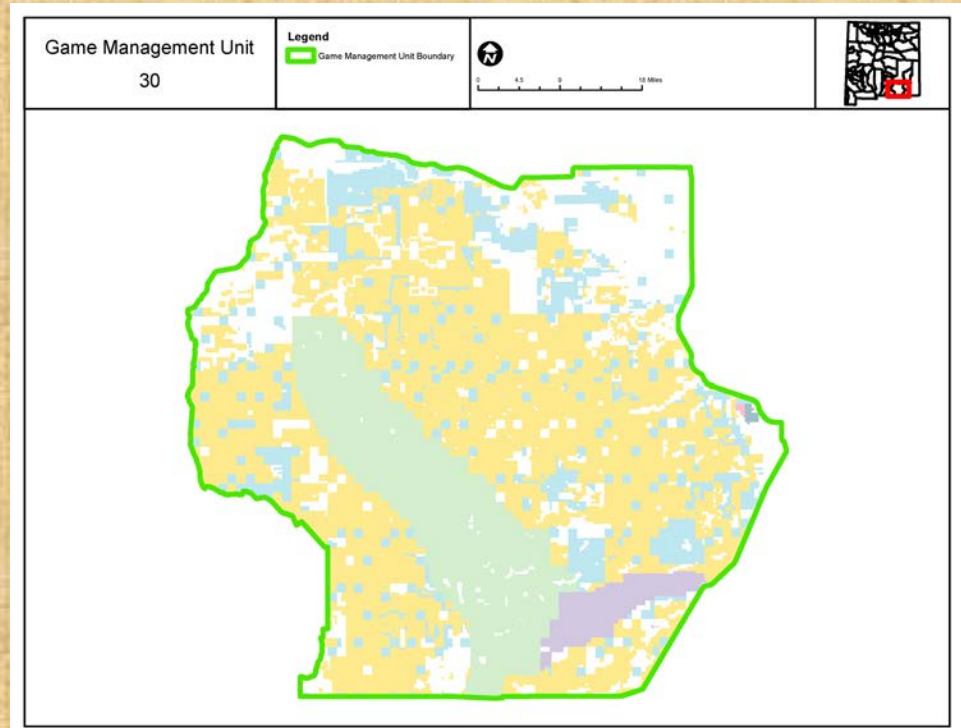
- Private licenses: 238
- Public draw licenses: 2412
 - 91% of licenses are public draw on public land.

PRONGHORN Hunting opportunities currently being issued through A-PLUS

- Current Private
 - No private-land hunts
- Current Public (archery)
 - Draw licenses: 25
- **Total Current Opportunity: 25**

PRONGHORN PROPOSED

- Proposed Private (archery)
 - **Expected new: 10**
- Proposed Public (archery)
 - **Proposed: 25***
- **Total Expected Opportunity: 35**



PROPOSED PUBLIC HUNT STRUCTURE				
Hunt	Date	Duration	Licenses	Bag
Youth*	2 nd Saturday in October	Up to 5 days	NA	
Archery	2 nd Saturday in August	9 days	25	MB
1st Rifle	4th Saturday in Aug	Up to 5 days	NA	
2nd Rifle	4th Saturday in Sept	Up to 5 days	NA	
MIP	4 th Saturday in Sept	Up to 5 days	NA	
3rd Rifle	1st Saturday in Oct	Up to 5 days	NA	
Total			25	

GMU 31

Publicly accessible land: 47%

DEER

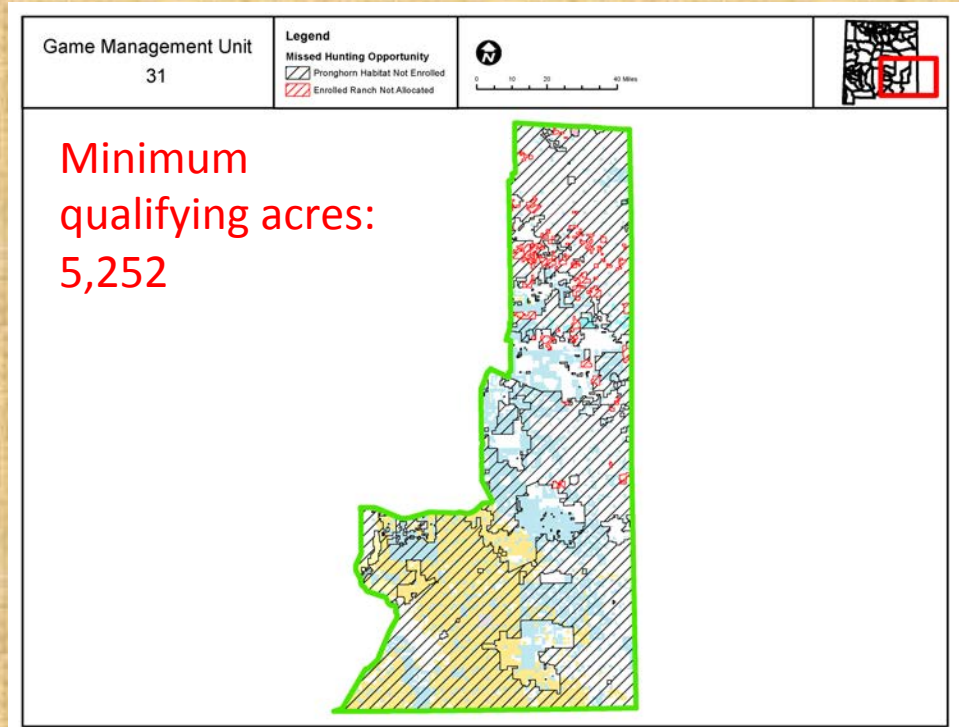
- Private licenses: 420
- Public draw licenses: 1328
 - 76% of licenses are public draw on public land.

PRONGHORN Hunting opportunities currently being issued through A-PLUS

- Current Private (rifle)
 - Allocated: 92
 - **Unconverted: 31**
 - **Converted: 61**
- Current Public (rifle)
 - Draw licenses: 62
- **Total Current Opportunity: 123**

PRONGHORN PROPOSED

- Proposed Private (rifle)
 - **Expected new: 90**
- Proposed Public (rifle)
 - **Proposed: 65***
- **Total Expected Opportunity: 155**



PROPOSED PUBLIC HUNT STRUCTURE				
Hunt	Date	Duration	Licenses	Bag
Youth*	2 nd Saturday in October	Up to 5 days	10	ES
Archery	2 nd Saturday in August	9 days	75	MB
1st Rifle	4th Saturday in Aug	Up to 5 days	25	MB
2nd Rifle	4th Saturday in Sept	Up to 5 days	15	MB
MIP	4 th Saturday in Sept	Up to 5 days	10	MB
3rd Rifle	1st Saturday in Oct	Up to 5 days	25	MB
Subtotal Rifle			65*	MB
Total all Methods			160	

GMU 32

Publicly accessible land: 31%

DEER

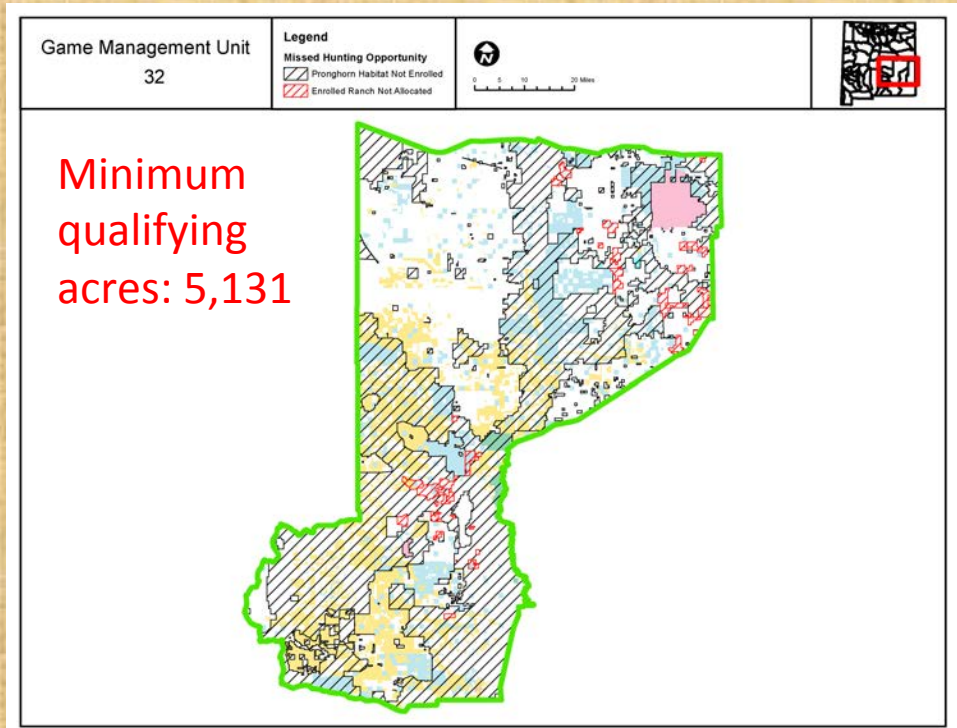
- Private licenses: 432
- Public draw licenses: 1623
 - 79% of licenses are public draw on public land.

PRONGHORN Hunting opportunities currently being issued through A-PLUS

- Current Private (rifle)
 - Allocated: 221
 - **Unconverted: 83**
 - **Converted: 138**
- Current Public (rifle)
 - Draw licenses: 69
- **Total Current Opportunity: 207**

PRONGHORN PROPOSED

- Proposed Private (rifle)
 - **Expected new: 190**
- Proposed Public (rifle)
 - **Proposed: 70***
- **Total Expected Opportunity: 260**



PROPOSED PUBLIC HUNT STRUCTURE				
Hunt	Date	Duration	Licenses	Bag
Youth*	2 nd Saturday in October	Up to 5 days	5	ES
Archery	2 nd Saturday in August	9 days	45	MB
1st Rifle	4th Saturday in Aug	Up to 5 days	25	MB
2nd Rifle	4th Saturday in Sept	Up to 5 days	20	MB
MIP	4 th Saturday in Sept	Up to 5 days	10	MB
3rd Rifle	1st Saturday in Oct	Up to 5 days	25	MB
Subtotal Rifle			70*	MB
Total all Methods			130	

GMU 33

Publicly accessible land: 56%

DEER

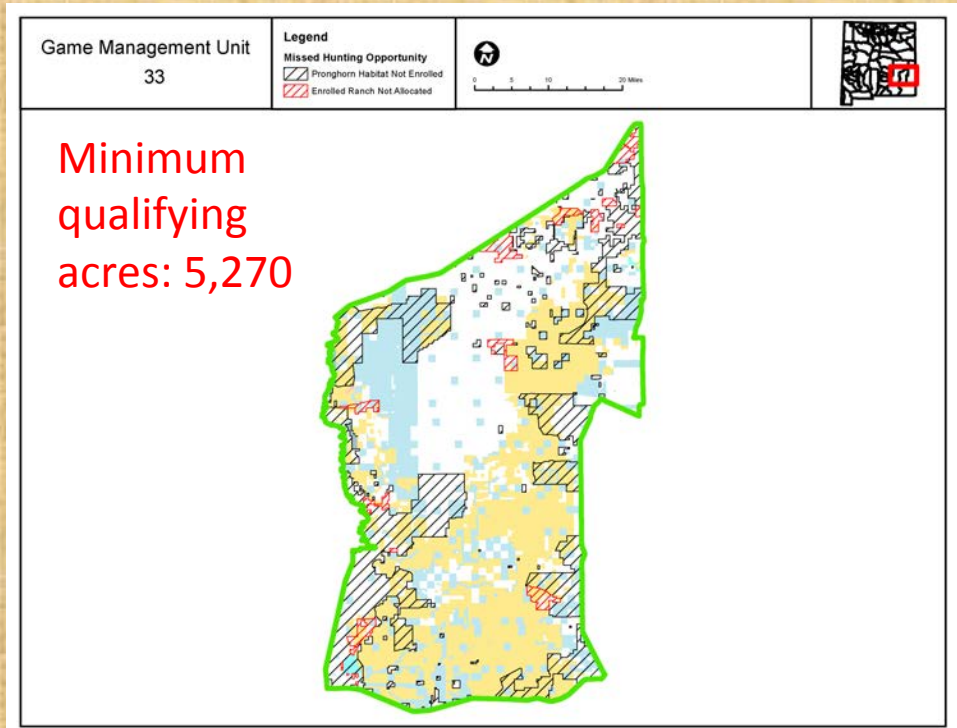
- Private licenses: 561
- Public draw licenses: 131
 - 81% of licenses are public draw on public land.

PRONGHORN Hunting opportunities currently being issued through A-PLUS

- Current Private (rifle)
 - Allocated: 60
 - **Unconverted: 20**
 - **Converted: 40**
- Current Public (rifle)
 - Draw licenses: 55
- **Total Current Opportunity: 95**

PRONGHORN PROPOSED

- Proposed Private (rifle)
 - **Expected new: 45**
- Proposed Public (rifle)
 - **Proposed: 70***
- **Total Expected Opportunity: 115**



PROPOSED PUBLIC HUNT STRUCTURE				
Hunt	Date	Duration	Licenses	Bag
Youth*	2 nd Saturday in October	Up to 5 days	5	ES
Archery	2 nd Saturday in August	9 days	30	MB
1st Rifle	4th Saturday in Aug	Up to 5 days	25	MB
2nd Rifle	4th Saturday in Sept	Up to 5 days	20	MB
MIP	4 th Saturday in Sept	Up to 5 days	5	MB
3rd Rifle	1st Saturday in Oct	Up to 5 days	25	MB
Subtotal Rifle			70*	MB
Total all Methods			110	

GMU 36 and 37

Publicly accessible land: 59%

DEER

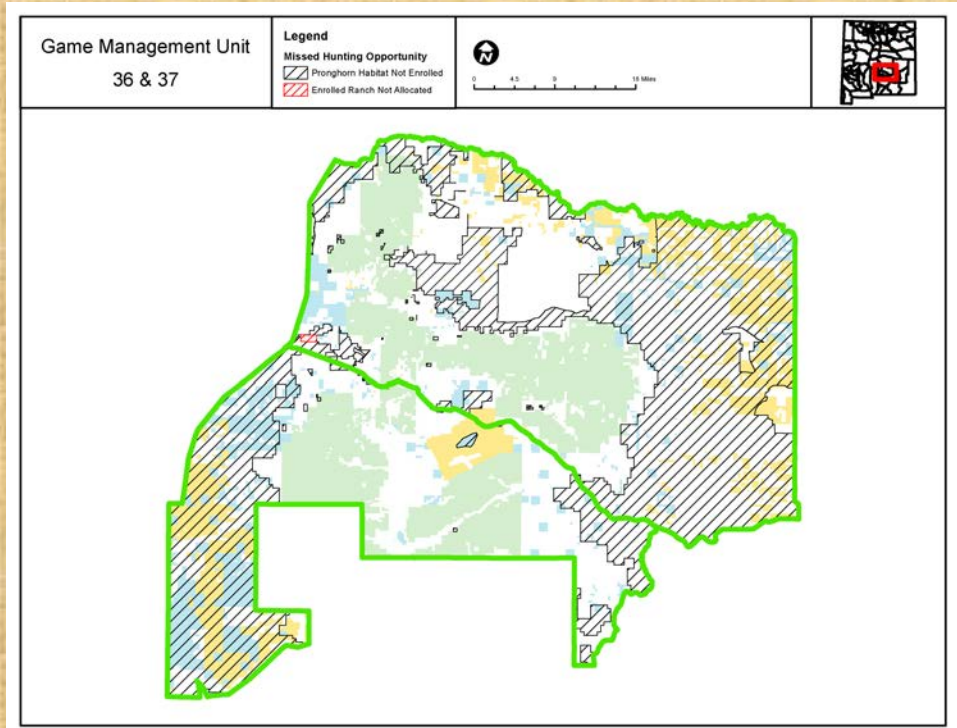
- Private licenses: 551
- Public draw licenses: 2073
 - 79% of licenses are public draw on public land.

PRONGHORN Hunting opportunities currently being issued through A-PLUS

- Current Private (rifle)
 - Allocated: 94
 - **Unconverted: 68**
 - **Converted: 26**
- Current Public (rifle)
 - Draw licenses: 18
- **Total Current Opportunity: 86**

PRONGHORN PROPOSED

- Proposed Private (rifle)
 - **Expected new: 40**
- Proposed Public (rifle)
 - **Proposed: 45***
- **Total Expected Opportunity: 95**



PROPOSED PUBLIC HUNT STRUCTURE				
Hunt	Date	Duration	Licenses	Bag
Youth*	2 nd Saturday in October	Up to 5 days	5	ES
Archery	2 nd Saturday in August	9 days	35	MB
1st Rifle	4th Saturday in Aug	Up to 5 days	15	MB
2nd Rifle	4th Saturday in Sept	Up to 5 days	15	MB
MIP	4 th Saturday in Sept	Up to 5 days	5	MB
3rd Rifle	1st Saturday in Oct	Up to 5 days	15	MB
Subtotal Rifle			45*	MB
Total all Methods			90	

GMU 38

Publicly accessible land: 30%

DEER

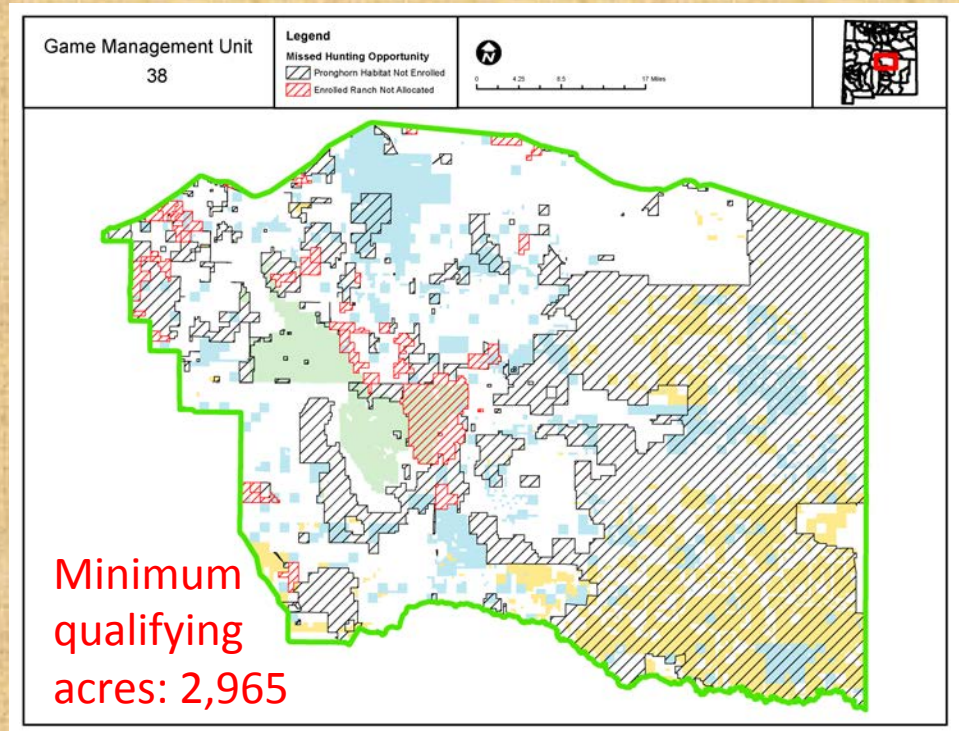
- Private licenses: 105
- Public draw licenses: 553
 - 84% of licenses are public draw on public land.

PRONGHORN Hunting opportunities currently being issued through A-PLUS

- Current Private (rifle)
 - Allocated: 186
 - **Unconverted: 65**
 - **Converted: 121**
- Current Public (rifle)
 - Draw licenses: 39
- **Total Current Opportunity: 160**

PRONGHORN PROPOSED

- Proposed Private (rifle)
 - **Expected new: 135**
- Proposed Public (rifle)
 - **Proposed: 65***
- **Total Expected Opportunity: 200**



PROPOSED PUBLIC HUNT STRUCTURE				
Hunt	Date	Duration	Licenses	Bag
Youth*	2 nd Saturday in October	Up to 5 days	10	ES
Archery	2 nd Saturday in August	9 days	20	MB
1st Rifle	4th Saturday in Aug	Up to 5 days	20	MB
2nd Rifle	4th Saturday in Sept	Up to 5 days	20	MB
MIP	4 th Saturday in Sept	Up to 5 days	10	MB
3rd Rifle	1st Saturday in Oct	Up to 5 days	25	MB
Subtotal Rifle			65*	MB
Total all Methods			105	

GMU 39

Publicly accessible land: 15%

DEER

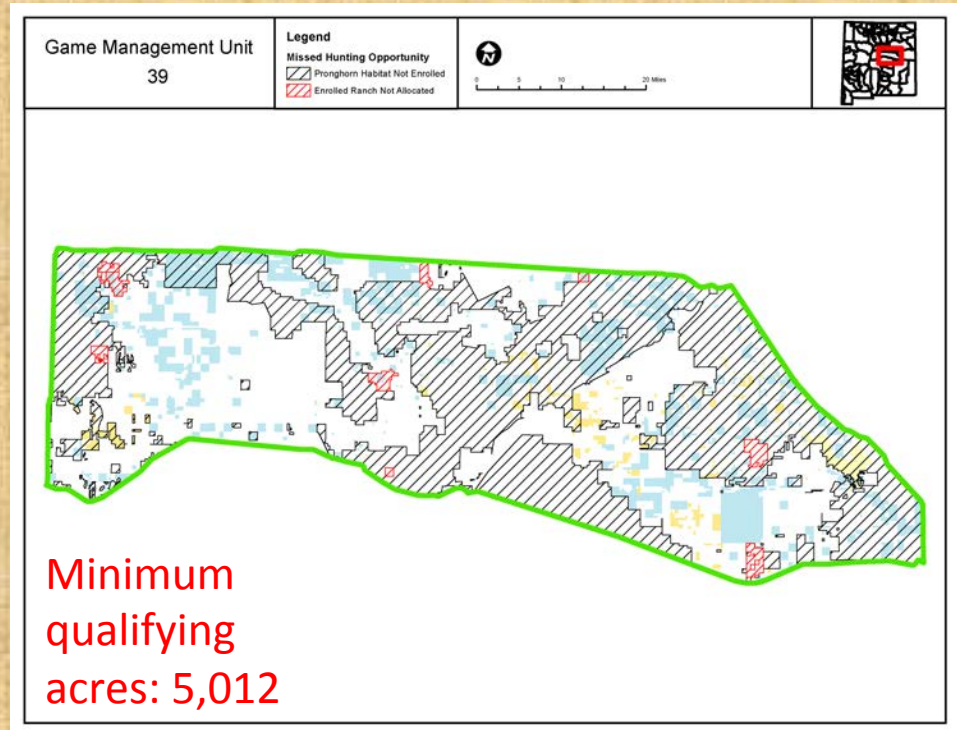
- Private licenses: 150
- Public draw licenses: 150
 - 50% of licenses are public draw on public land.

PRONGHORN Hunting opportunities currently being issued through A-PLUS

- Current Private (rifle)
 - Allocated: 120
 - **Unconverted: 27**
 - **Converted: 93**
- Current Public (rifle)
 - Draw licenses: 26
- **Total Current Opportunity: 119**

PRONGHORN PROPOSED

- Proposed Private (rifle)
 - **Expected new: 120**
- Proposed Public (rifle)
 - **Proposed: 30***
- **Total Expected Opportunity: 150**



PROPOSED PUBLIC HUNT STRUCTURE				
Hunt	Date	Duration	Licenses	Bag
Youth*	2 nd Saturday in October	Up to 5 days	5	ES
Archery	2 nd Saturday in August	9 days	5	MB
1st Rifle	4th Saturday in Aug	Up to 5 days	15	MB
2nd Rifle	4th Saturday in Sept	Up to 5 days	15	MB
MIP	4 th Saturday in Sept	Up to 5 days	5	MB
3rd Rifle	1st Saturday in Oct	Up to 5 days	NA	
Subtotal Rifle			30*	MB
Total all Methods			45	

GMU 40

Publicly accessible land: 7%

DEER

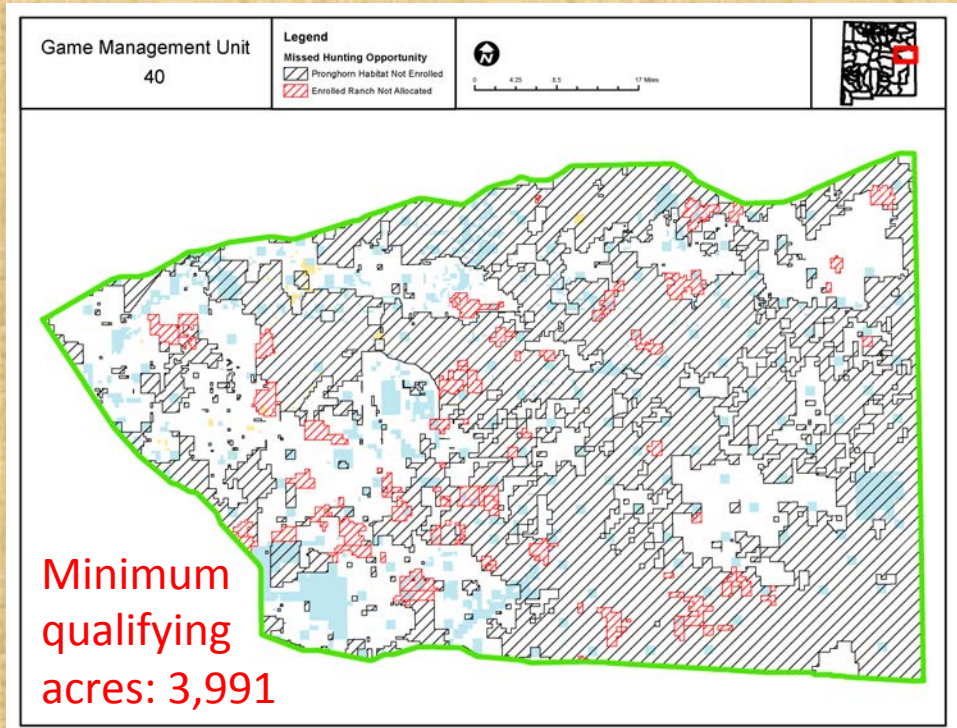
- Private licenses: 209
- Public draw licenses: 152
 - 42% of licenses are public draw on public land.

PRONGHORN Hunting opportunities currently being issued through A-PLUS

- Current Private (rifle)
 - Allocated: 195
 - **Unconverted: 52**
 - **Converted: 143**
- Current Public (rifle)
 - Draw licenses: 18
- **Total Current Opportunity: 161**

PRONGHORN PROPOSED

- Proposed Private (rifle)
 - **Expected new: 240**
- Proposed Public (rifle)
 - **Proposed: 20***
- **Total Expected Opportunity: 260**



PROPOSED PUBLIC HUNT STRUCTURE				
Hunt	Date	Duration	Licenses	Bag
Youth*	2 nd Saturday in October	Up to 5 days	NA	
Archery	2 nd Saturday in August	9 days	5	MB
1st Rifle	4th Saturday in Aug	Up to 5 days	10	MB
2nd Rifle	4th Saturday in Sept	Up to 5 days	10	MB
MIP	4 th Saturday in Sept	Up to 5 days	5	MB
3rd Rifle	1st Saturday in Oct	Up to 5 days	NA	
Subtotal Rifle			25*	MB
Total all Methods			30	

SE AREA SUMMARY

- Increase public draw licenses
 - Rifle: 8% Increase
 - 369 → 400
 - Archery: 20% Increase
 - 210 → 250
 - Youth (Rifle): Maintain current opportunity
 - Mobility Impaired (Rifle): Maintain current opportunity



NW AREA

- Population estimate: ~1,500
- Fewest pronghorn of all regions
- Intermixed private, BLM, USFS, State Land Office, and Tribal lands
- Limited pronghorn habitat in this area



GMU 2 & 7

Publicly accessible land: 57%

DEER

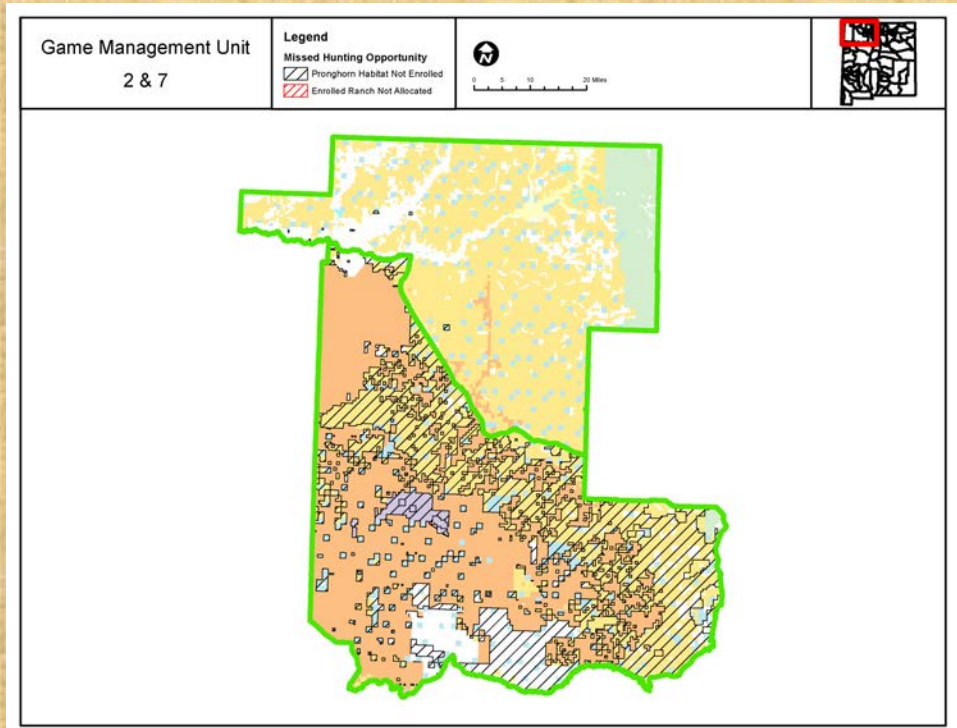
- Private licenses: 230
- Public draw licenses: 2325
 - 91% of licenses are public draw on public land.

PRONGHORN Hunting opportunities currently being issued through A-PLUS

- Current Private (rifle)
 - Allocated: 2
 - **Unconverted: 2**
 - **Converted: 0**
- Current Public (rifle)
 - Draw licenses: 2
- **Total Current Opportunity: 4**

PRONGHORN PROPOSED

- Proposed Private (rifle)
 - **Expected new: 10**
- Proposed Public (rifle)
 - **Proposed: 13***
- **Total Expected Opportunity: 23**



PROPOSED PUBLIC HUNT STRUCTURE				
Hunt	Date	Duration	Licenses	Bag
Youth*	2 nd Saturday in October	Up to 5 days	3	ES
Archery	2 nd Saturday in August	9 days	10	MB
1st Rifle	4th Saturday in Aug	Up to 5 days	10	MB
2nd Rifle	4th Saturday in Sept	Up to 5 days	NA	
MIP	4 th Saturday in Sept	Up to 5 days	NA	
3rd Rifle	1st Saturday in Oct	Up to 5 days	NA	
Subtotal Rifle			13*	MB
Total all Methods			23	

GMU 9 & 10

Publicly accessible land: 28%

DEER

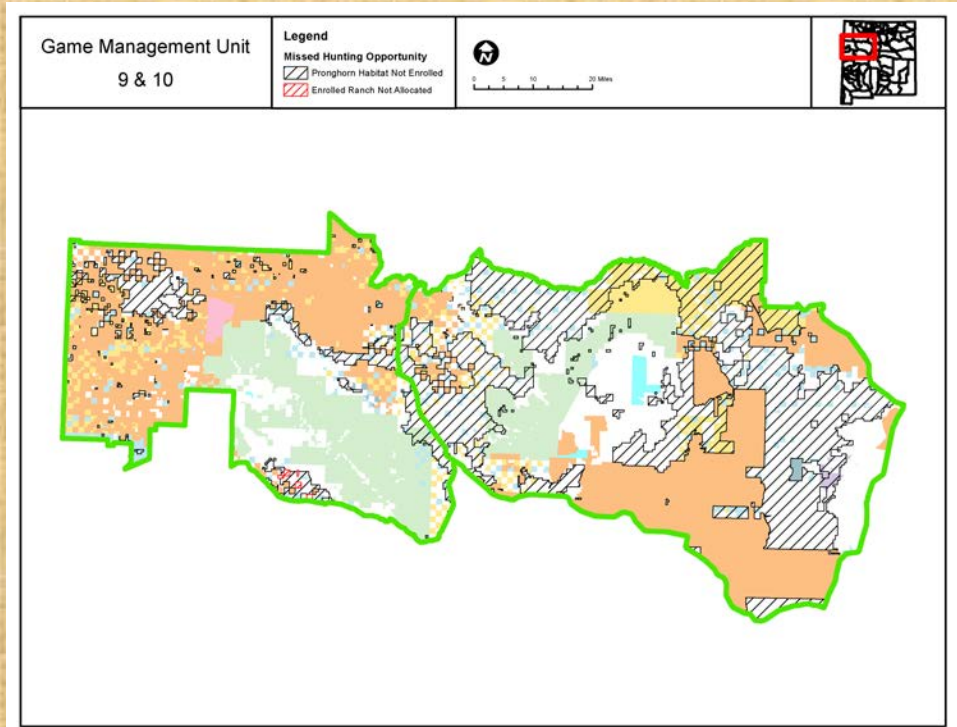
- Private licenses: 182
- Public draw licenses: 518
 - 74% of licenses are public draw on public land.

PRONGHORN Hunting opportunities currently being issued through A-PLUS

- Current Private (rifle)
 - Allocated: 0
 - **Unconverted: 0**
 - **Converted: 0**
- Current Public (rifle)
 - Draw licenses: 0
- **Total Current Opportunity: 0**

PRONGHORN PROPOSED

- Proposed Private (rifle)
 - **Expected new: 10**
- Proposed Public (rifle)
 - **Proposed: 15***
- **Total Expected Opportunity: 25**



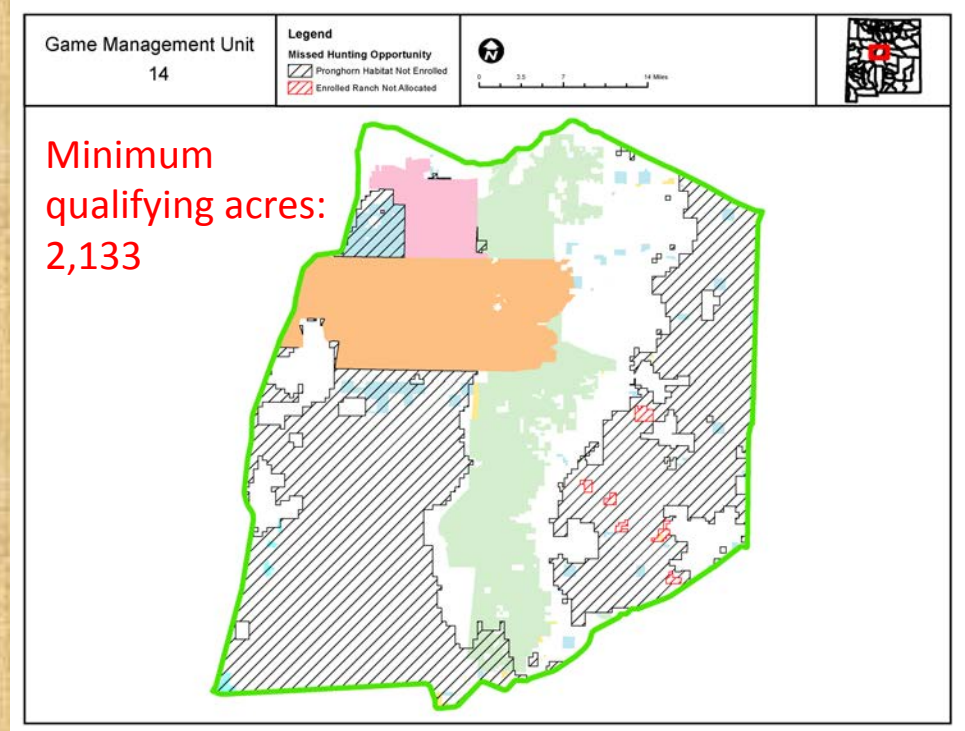
PROPOSED PUBLIC HUNT STRUCTURE				
Hunt	Date	Duration	Licenses	Bag
Youth*	2 nd Saturday in October	Up to 5 days	2	ES
Archery	2 nd Saturday in August	9 days	10	MB
1st Rifle	4th Saturday in Aug	Up to 5 days	10	MB
2nd Rifle	4th Saturday in Sept	Up to 5 days	NA	
MIP	4 th Saturday in Sept	Up to 5 days	NA	
3rd Rifle	1st Saturday in Oct	Up to 5 days	NA	
Subtotal Rifle			12*	MB
Total all Methods			22	

GMU 14

- No public draw hunt
- Hunt date to match public hunt dates in surrounding GMUs

PRONGHORN

- Current private (rifle):
 - Allocated: 11
 - Converted: 9
 - Unconverted: 2
- Expected private (rifle):
 - ~20 licenses



PROPOSED HUNT STRUCTURE			
Hunt	Date	Duration	Bag
Youth*	2 nd Saturday in October	Up to 5 days	ES
Archery	2 nd Saturday in August	9 days	MB
1st Rifle	4th Saturday in Aug	Up to 5 days	MB
2nd Rifle	4th Saturday in Sept	Up to 5 days	MB
MIP	4 th Saturday in Sept	Up to 5 days	MB
3rd Rifle	1st Saturday in Oct	Up to 5 days	MB
Total			

NW AREA SUMMARY

- Increase public draw licenses
 - Rifle: 18% Increase
 - 17→20
 - Archery: 33% Increase
 - 15→20
 - Youth (Rifle): Maintain Current



SW AREA

- Population estimate: ~2,500
- 44* bucks: 100 does: 30 fawns
- Regional pronghorn stronghold: Plains of San Augustine
- Intermixed private, BLM, USFS, State Land Office, and Tribal lands
- Some pronghorn found in the Gila National Forest
- Portions of region are very dry
 - Very few pronghorn in Bootheel

GMU 12

Publicly accessible land: 37%

DEER

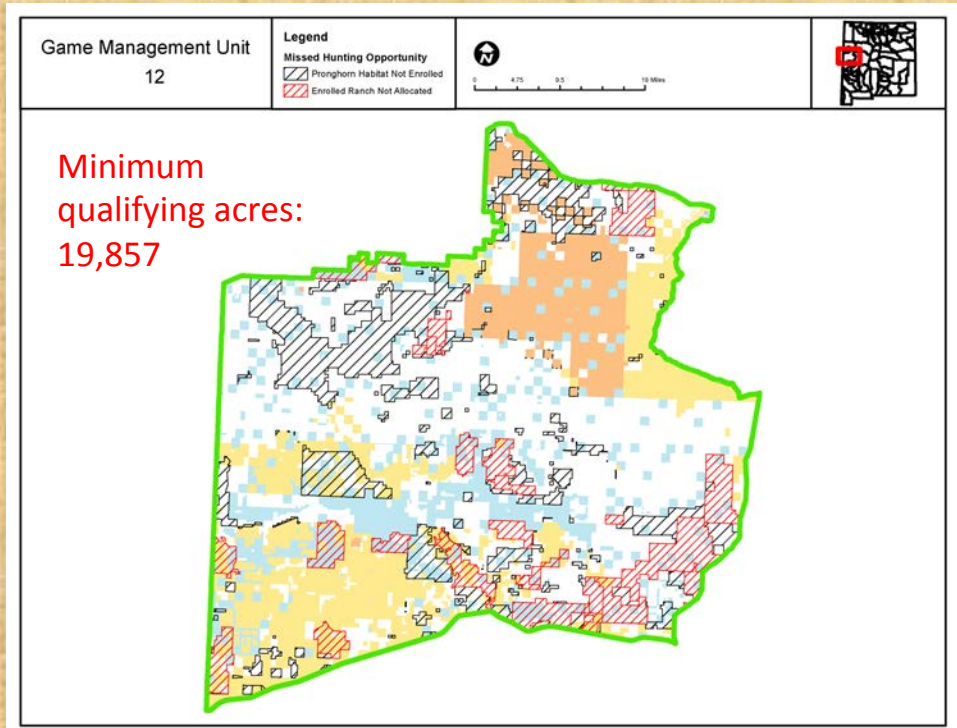
- Private licenses: 95
- Public draw licenses: 161
 - 63% of licenses are public draw on public land.

PRONGHORN Hunting opportunities currently being issued through A-PLUS

- Current Private (rifle)
 - Allocated: 12
 - **Unconverted: 2**
 - **Converted: 10**
- Current Public (rifle)
 - Draw licenses: 10
- **Total Current Opportunity: 20**

PRONGHORN PROPOSED

- Proposed Private (rifle)
 - **Expected new: 40**
- Proposed Public (rifle)
 - **Proposed: 20***
- **Total Expected Opportunity: 60**



PROPOSED PUBLIC HUNT STRUCTURE				
Hunt	Date	Duration	Licenses	Bag
Youth*	2 nd Saturday in October	Up to 5 days	3	ES
Archery	2 nd Saturday in August	9 days	10	MB
1st Rifle	4th Saturday in Aug	Up to 5 days	10	MB
2nd Rifle	4th Saturday in Sept	Up to 5 days	10	MB
MIP	4 th Saturday in Sept	Up to 5 days	10	MB
3rd Rifle	1st Saturday in Oct	Up to 5 days	NA	
Subtotal Rifle			23*	MB
Total all Methods			43	

GMU 13

Publicly accessible land: 36%

DEER

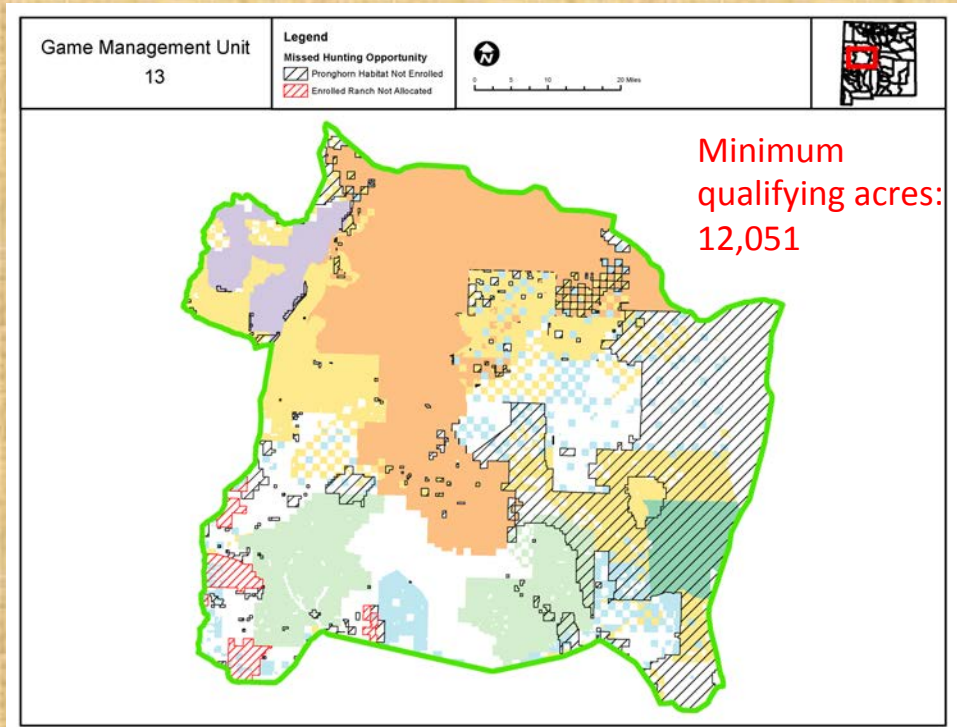
- Private licenses: 57
- Public draw licenses: 753
 - 93% of licenses are public draw on public land.

PRONGHORN Hunting opportunities currently being issued through A-PLUS

- Current Private (rifle)
 - Allocated: 15
 - **Unconverted: 8**
 - **Converted: 7**
- Current Public (rifle)
 - Draw licenses: 14
- **Total Current Opportunity: 21**

PRONGHORN PROPOSED

- Proposed Private (rifle)
 - **Expected new: 10**
- Proposed Public (rifle)
 - **Proposed: 15***
- **Total Expected Opportunity: 25**



PROPOSED PUBLIC HUNT STRUCTURE				
Hunt	Date	Duration	Licenses	Bag
Youth*	2 nd Saturday in October	Up to 5 days	2	ES
Archery	2 nd Saturday in August	9 days	10	MB
1st Rifle	4th Saturday in Aug	Up to 5 days	15	MB
2nd Rifle	4th Saturday in Sept	Up to 5 days	NA	
MIP	4 th Saturday in Sept	Up to 5 days	10	MB
3rd Rifle	1st Saturday in Oct	Up to 5 days	NA	
Subtotal Rifle			15*	MB
Total all Methods			27	

GMU 15

Publicly accessible land: 77%

DEER

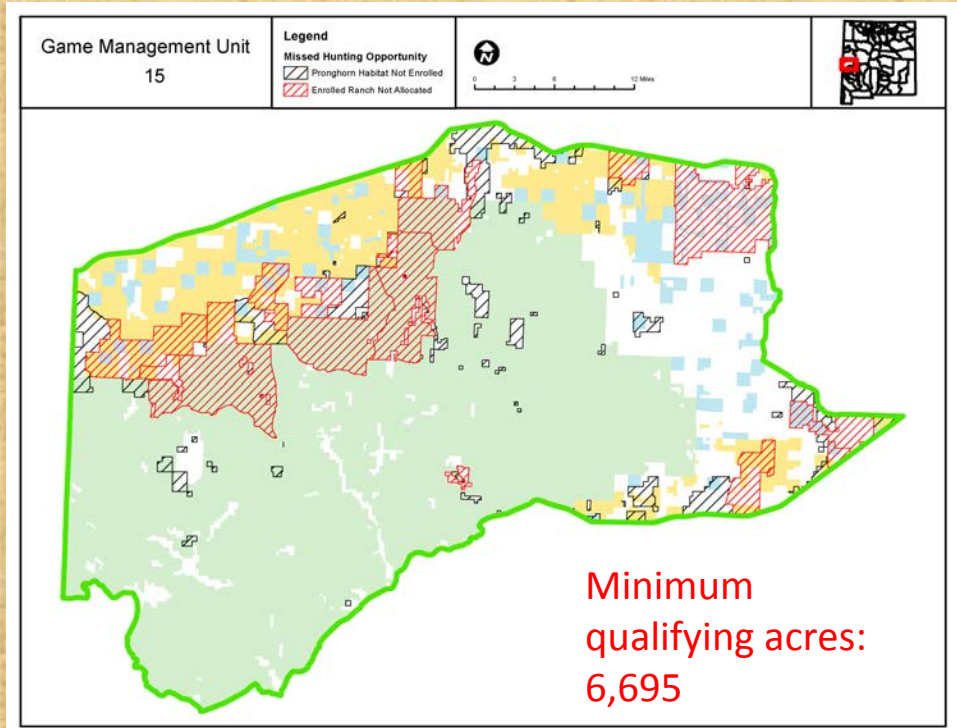
- Private licenses: 15
- Public draw licenses: 366
 - 93% of licenses are public draw on public land.

PRONGHORN Hunting opportunities currently being issued through A-PLUS

- Current Private (rifle)
 - Allocated: 8
 - **Unconverted: 2**
 - **Converted: 6**
- Current Public (rifle)
 - Draw licenses: 10
- **Total Current Opportunity: 16**

PRONGHORN PROPOSED

- Proposed Private (rifle)
 - **Expected new: 15**
- Proposed Public (rifle)
 - **Proposed: 20***
- **Total Expected Opportunity: 35**



PROPOSED PUBLIC HUNT STRUCTURE				
Hunt	Date	Duration	Licenses	Bag
Youth*	2 nd Saturday in October	Up to 5 days	5	ES
Archery	2 nd Saturday in August	9 days	20	MB
1st Rifle	4th Saturday in Aug	Up to 5 days	10	MB
2nd Rifle	4th Saturday in Sept	Up to 5 days	10	MB
MIP	4 th Saturday in Sept	Up to 5 days	3	MB
3rd Rifle	1st Saturday in Oct	Up to 5 days	NA	
Subtotal Rifle			20*	MB
Total all Methods			48	

GMU 16

Publicly accessible land: 83%

DEER

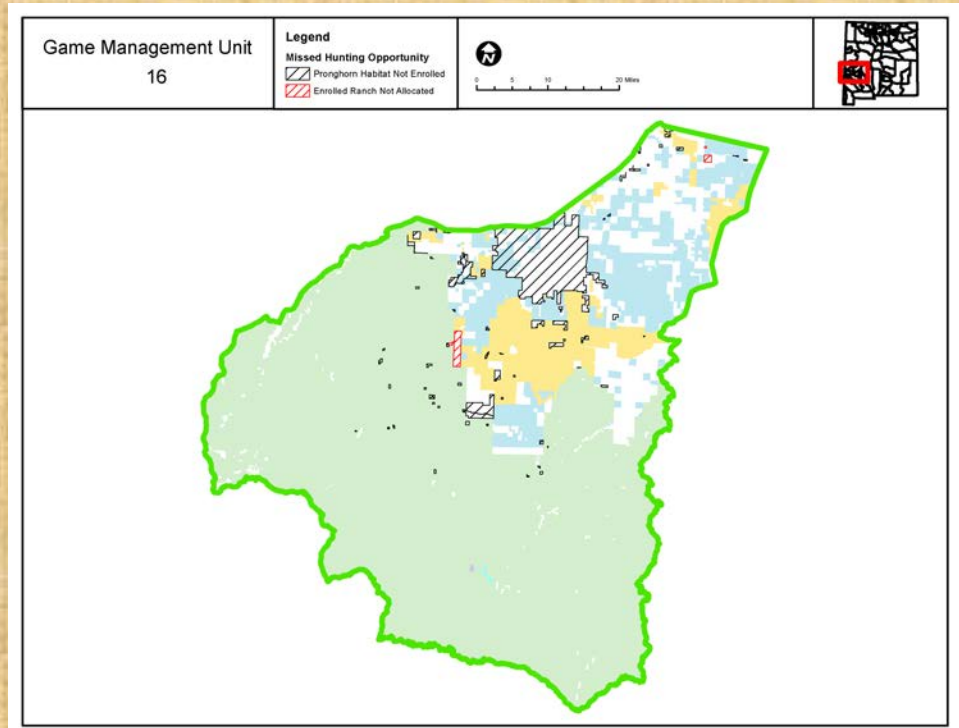
- Private licenses: 30
- Public draw licenses: 1423
 - 98% of licenses are public draw on public land.

PRONGHORN Hunting opportunities currently being issued through A-PLUS

- Current Private (rifle)
 - Allocated: 44
 - **Unconverted: 1**
 - **Converted: 43**
- Current Public (rifle)
 - Draw licenses: 54
- **Total Current Opportunity: 97**

PRONGHORN PROPOSED

- Proposed Private (rifle)
 - **Expected new: 55**
- Proposed Public (rifle)
 - **Proposed: 40***
- **Total Expected Opportunity: 95**



PROPOSED PUBLIC HUNT STRUCTURE				
Hunt	Date	Duration	Licenses	Bag
Youth*	2 nd Saturday in October	Up to 5 days	5	ES
Archery	2 nd Saturday in August	9 days	20	MB
1st Rifle	4th Saturday in Aug	Up to 5 days	20	MB
2nd Rifle	4th Saturday in Sept	Up to 5 days	20	MB
MIP	4 th Saturday in Sept	Up to 5 days	3	MB
3rd Rifle	1st Saturday in Oct	Up to 5 days	NA	
Subtotal Rifle			40*	MB
Total all Methods			68	

GMU 17

Publicly accessible land: 73%

DEER

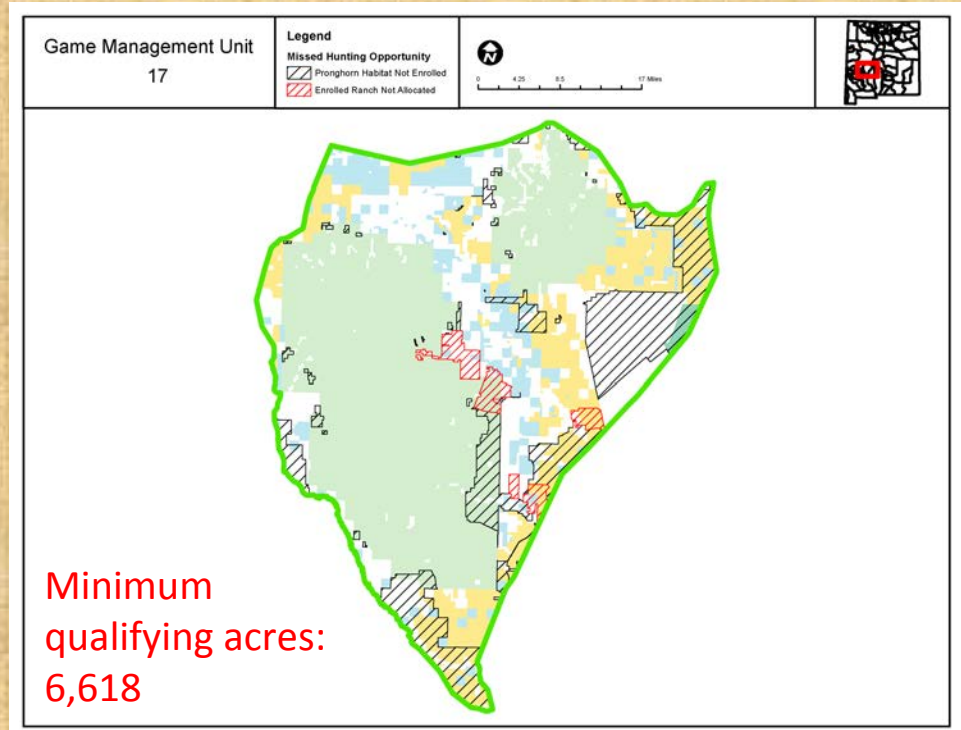
- Private licenses: 98
- Public draw licenses: 456
 - 98% of licenses are public draw on public land.

PRONGHORN Hunting opportunities currently being issued through A-PLUS

- Current Private (rifle)
 - Allocated: 15
 - **Unconverted: 0**
 - **Converted: 15**
- Current Public (rifle)
 - Draw licenses: 13
- **Total Current Opportunity: 28**

PRONGHORN PROPOSED

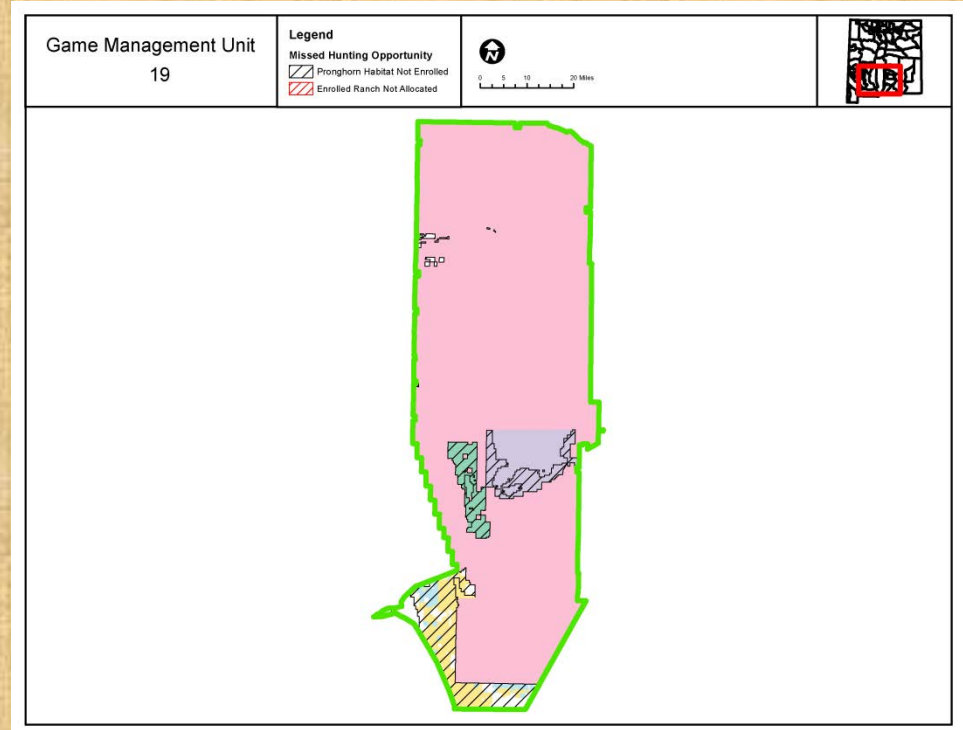
- Proposed Private (rifle)
 - **Expected new: 20**
- Proposed Public (rifle)
 - **Proposed: 20***
- **Total Expected Opportunity: 40**



PROPOSED PUBLIC HUNT STRUCTURE				
Hunt	Date	Duration	Licenses	Bag
Youth*	2 nd Saturday in October	Up to 5 days	5	ES
Archery	2 nd Saturday in August	9 days	20	MB
1st Rifle	4th Saturday in Aug	Up to 5 days	10	MB
2nd Rifle	4th Saturday in Sept	Up to 5 days	10	MB
MIP	4 th Saturday in Sept	Up to 5 days	3	MB
3rd Rifle	1st Saturday in Oct	Up to 5 days	NA	
Subtotal Rifle			20*	MB
Total all Methods			48	

GMU 19

- White Sands Missile Range
 - NMDGF and Dept. of Defense coordinate public hunting
- No proposed change to hunt structure and tag allocations



PROPOSED PUBLIC HUNT STRUCTURE				
Hunt	Date	Duration	Licenses	Bag
Youth*	2 nd Saturday in October	Up to 5 days	5	ES
Archery	2 nd Saturday in August	9 days	NA	
1st Rifle	4th Saturday in Aug	Up to 5 days	NA	
2nd Rifle	4th Saturday in Sept	Up to 5 days	NA	
MIP	4 th Saturday in Sept	Up to 5 days	NA	
3rd Rifle	1st Saturday in Oct	Up to 5 days	NA	
Total			5	

GMU 20

Publicly accessible land: 64%

DEER

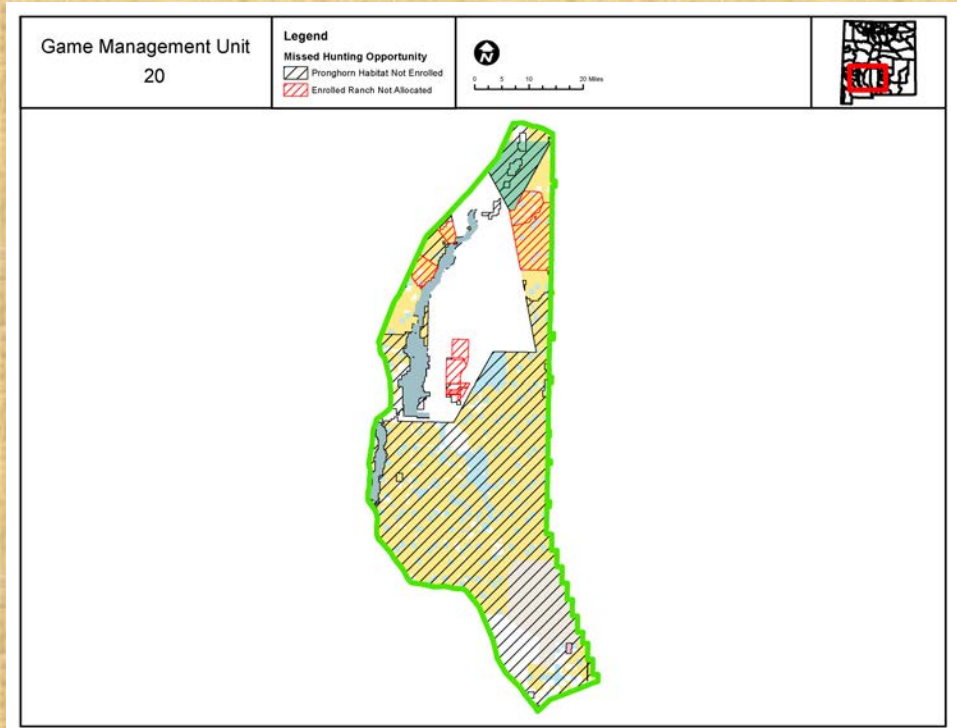
- Private licenses: 13
- Public draw licenses: 387
 - 98% of licenses are public draw on public land.

PRONGHORN Hunting opportunities currently being issued through A-PLUS

- Current Private (rifle)
 - Allocated: 15
 - **Unconverted: 14**
 - **Converted: 1**
- Current Public (rifle)
 - Draw licenses: 3
- **Total Current Opportunity: 4**

PRONGHORN PROPOSED

- Proposed Private (rifle)
 - **Expected new: 5**
- Proposed Public (rifle)
 - **Proposed: 10***
- **Total Expected Opportunity: 15**



PROPOSED PUBLIC HUNT STRUCTURE				
Hunt	Date	Duration	Licenses	Bag
Youth*	2 nd Saturday in October	Up to 5 days	2	ES
Archery	2 nd Saturday in August	9 days	10	MB
1st Rifle	4th Saturday in Aug	Up to 5 days	10	MB
2nd Rifle	4th Saturday in Sept	Up to 5 days	NA	
MIP	4 th Saturday in Sept	Up to 5 days	NA	
3rd Rifle	1st Saturday in Oct	Up to 5 days	NA	
Subtotal Rifle			10*	MB
Total all Methods			22	

GMU 21 & 24

Publicly accessible land: 71%

DEER

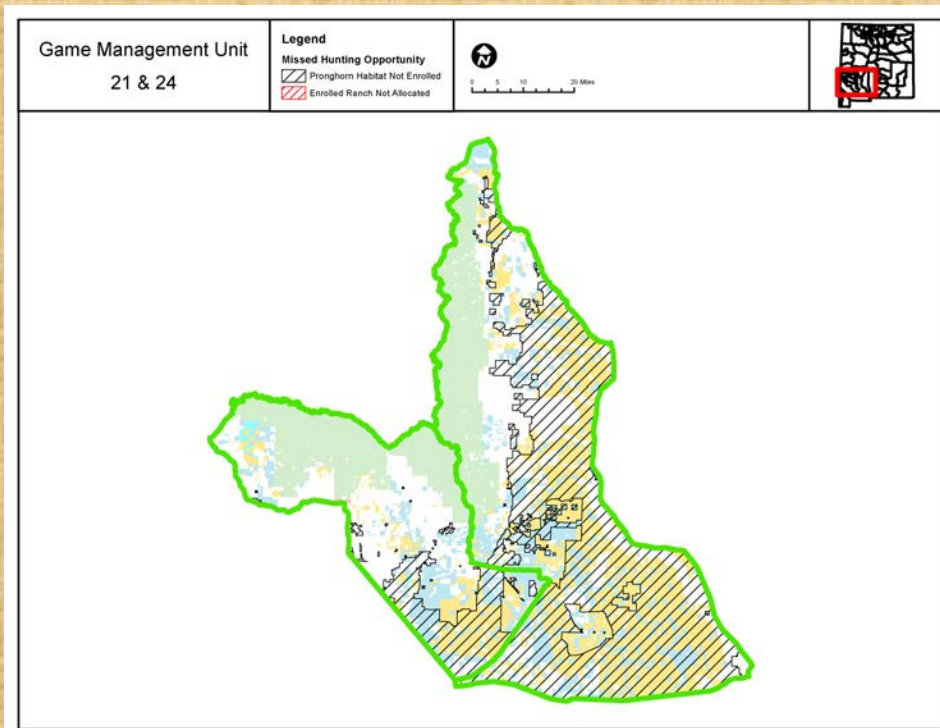
- Private licenses: 236
- Public draw licenses: 3705
 - 94% of licenses are public draw on public land.

PRONGHORN Hunting opportunities currently being issued through A-PLUS

- Current Private (rifle)
 - Allocated: 13
 - **Unconverted: 3**
 - **Converted: 10**
- Current Public (rifle)
 - Draw licenses: 12
- **Total Current Opportunity: 22**

PRONGHORN PROPOSED

- Proposed Private (rifle)
 - **Expected new: 15**
- Proposed Public (rifle)
 - **Proposed: 30***
- **Total Expected Opportunity: 45**



PROPOSED PUBLIC HUNT STRUCTURE				
Hunt	Date	Duration	Licenses	Bag
Youth*	2 nd Saturday in October	Up to 5 days	10	ES
Archery	2 nd Saturday in August	9 days	25	MB
1st Rifle	4th Saturday in Aug	Up to 5 days	10	MB
2nd Rifle	4th Saturday in Sept	Up to 5 days	10	MB
MIP	4 th Saturday in Sept	Up to 5 days	8	MB
3rd Rifle	1st Saturday in Oct	Up to 5 days	10	MB
Subtotal Rifle			30*	MB
Total all Methods			73	

GMU 22 & 23

Publicly accessible land: 66%

DEER

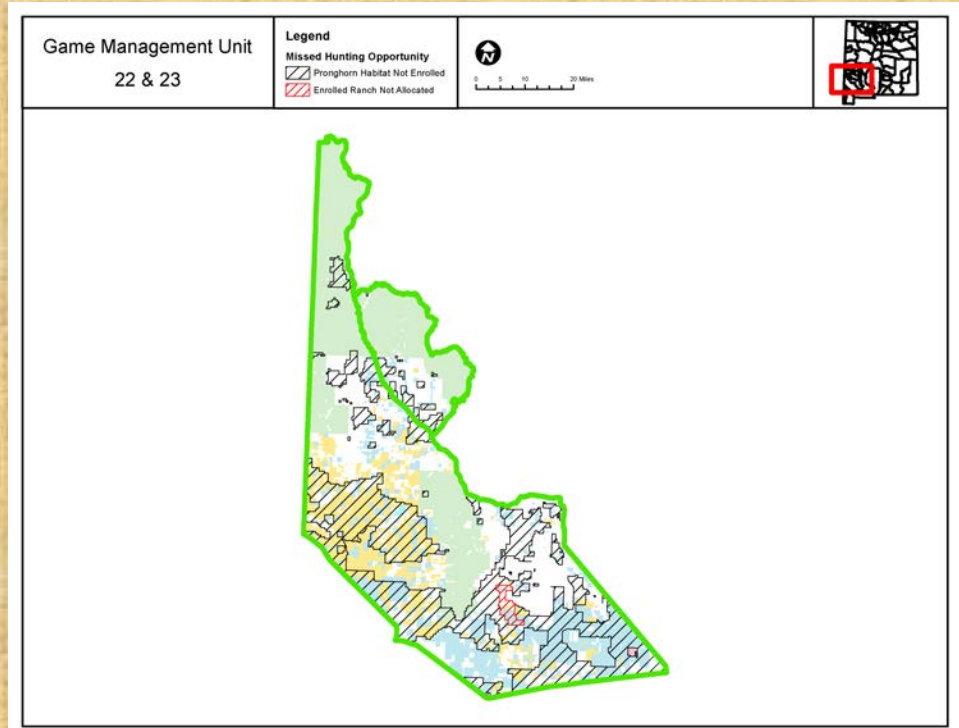
- Private licenses: 96
- Public draw licenses: 1499
 - 94% of licenses are public draw on public land.

PRONGHORN Hunting opportunities currently being issued through A-PLUS

- Current Private (rifle)
 - Allocated: 16
 - **Unconverted: 1**
 - **Converted: 15**
- Current Public (rifle)
 - Draw licenses: 11
- **Total Current Opportunity: 25**

PRONGHORN PROPOSED

- Proposed Private (rifle)
 - **Expected new: 25**
- Proposed Public (rifle)
 - **Proposed: 15***
- **Total Expected Opportunity: 40**



PROPOSED PUBLIC HUNT STRUCTURE				
Hunt	Date	Duration	Licenses	Bag
Youth*	2 nd Saturday in October	Up to 5 days	5	ES
Archery	2 nd Saturday in August	9 days	10	MB
1st Rifle	4th Saturday in Aug	Up to 5 days	15	MB
2nd Rifle	4th Saturday in Sept	Up to 5 days	NA	
MIP	4 th Saturday in Sept	Up to 5 days	3	MB
3rd Rifle	1st Saturday in Oct	Up to 5 days	NA	
Subtotal Rifle			15*	MB
Total all Methods			33	

GMU 25, 26 & 27

Publicly accessible land: 65%

DEER

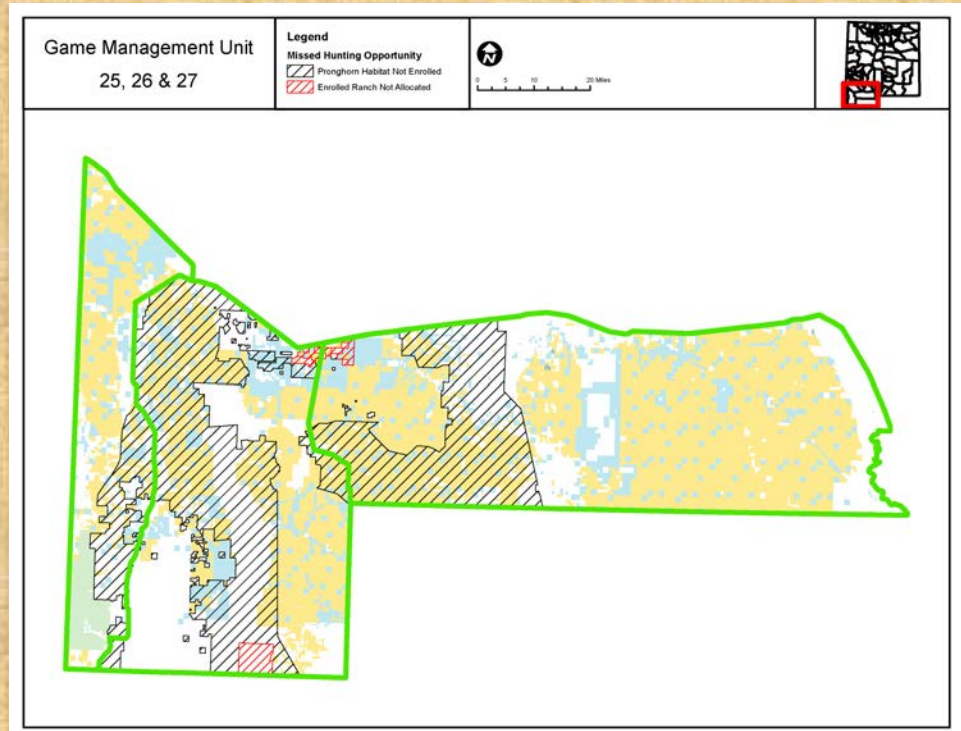
- Private licenses: 77
- Public draw licenses: 1016
 - 93% of licenses are public draw on public land.

PRONGHORN Hunting opportunities currently being issued through A-PLUS

- Current Private (rifle)
 - Allocated: 14
 - **Unconverted: 3**
 - **Converted: 11**
- Current Public (rifle)
 - Draw licenses: 9
- **Total Current Opportunity: 20**

PRONGHORN PROPOSED

- Proposed Private (rifle)
 - **Expected new: 15**
- Proposed Public (rifle)
 - **Proposed: 10***
- **Total Expected Opportunity: 25**



PROPOSED PUBLIC HUNT STRUCTURE				
Hunt	Date	Duration	Licenses	Bag
Youth*	2 nd Saturday in October	Up to 5 days	5	ES
Archery	2 nd Saturday in August	9 days	10	MB
1st Rifle	4th Saturday in Aug	Up to 5 days	15	MB
2nd Rifle	4th Saturday in Sept	Up to 5 days	NA	
MIP	4 th Saturday in Sept	Up to 5 days	3	MB
3rd Rifle	1st Saturday in Oct	Up to 5 days	NA	
Subtotal Rifle			15*	MB
Total all Methods			33	

SW AREA SUMMARY

- Increase public draw licenses
 - Rifle: 48% Increase
 - 122 → 180
 - Archery: 11% Increase
 - 122 → 135
 - Youth (Rifle): 19% Increase
 - 37 → 44
 - Mobility Impaired (Rifle): Maintain current opportunity



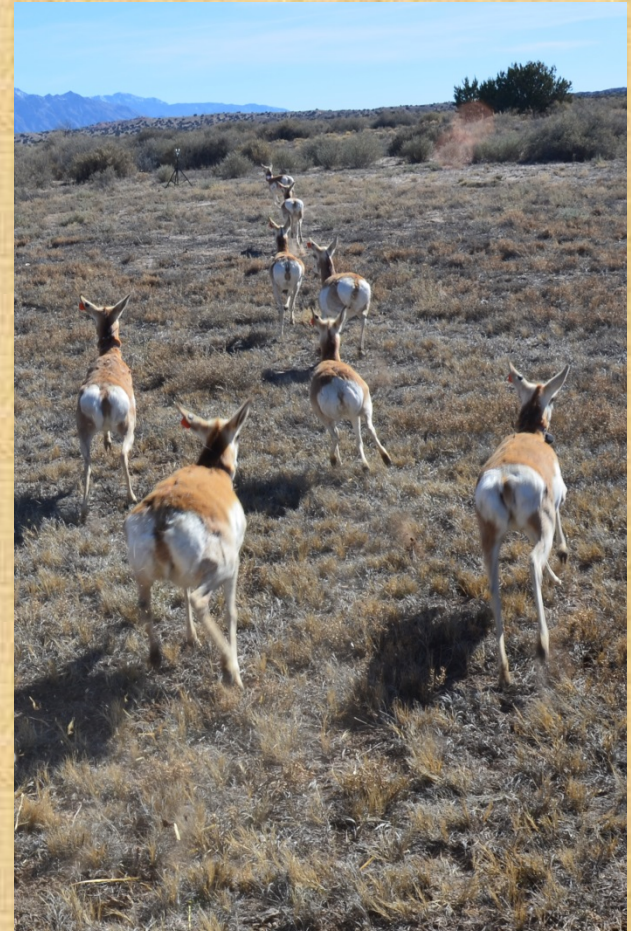
CURRENT A-PLUS HUNT STRUCTURE

- Public rifle hunters:
 - Assigned to a specific ranch
 - 3 day hunts
- Archery and muzzleloader hunters:
 - Hunt unit-wide on public land and private land with permission
- Hunting seasons: early-August through Mid-October
 - Depending on weapon type and region



OPTION 2: PRONGHORN HUNT MGMT

- OPPORTUNITY: distribute public draw & offer unlimited OTC pronghorn licenses on private land
- QUALITY: distribute public & private through draw
 - Similar to some deer hunts in NW area
- Increased opportunity for “open gate”



OPTION 2: PRONGHORN HUNT MGMT

- Input from hunters & local communities for “quality” vs “opportunity” GMUs
 - Examples:
 - Opportunity: some NE units
 - Quality: GMU 16 (Plains of San Augustine) & some NE units

County	B&C entries
Catron	63
Colfax	63
Grant	14
Lea	7
Lincoln	60
Mora	81
Otero	11
Quay	6
Sierra	8
Socorro	90
Torrance	7



Plains of San Augustine
B&C world record buck

Ranches signed up but do not qualify

GMU	# Ranches not qualifying
7	1
8	2
12	19
13	4
14	4
15	16
16	2
17	3
18	11
20	6
23	1
25	1
26	1
29	2
31	43
32	30
33	13
37	1
38	29
39	9
40	51
43	1
46	1
47	2
52	2
55	1
58	8
59	1
TOTAL	265

PROPOSED QUALITY HUNT UNITS

- Quality GMUs determined by total # B&C scores in each county
- Proposed quality GMUs
 - NE area
 - GMU 47
 - SE area
 - GMUs 28, 34/36/37
 - SW area
 - GMUs 13, 15, 16
 - NW area
 - GMU 12

<i>County</i>	<i>B&C entries</i>
Catron	63
Chaves	4
Cibola	5
Cimarron	1
Colfax	63
De Baca	5
Grant	14
Guadalupe	2
Harding	5
Henderson	2
Lea	7
Lincoln	60
Luna	3
Magdalena	1
McKinley	1
Mora	81
Otero	11
Quay	6
Roosevelt	1
San Miguel	2
Santa Fe	1
Santa Rosa	1
Sierra	8
Socorro	90
Taos	2
Torrance	7
Union	3

GMU	Public DER rifle success rate
41	0.42
42	0.29
47	0.33
56	0.63
57	0.50
58	0.46
59	0.21

GMU 48

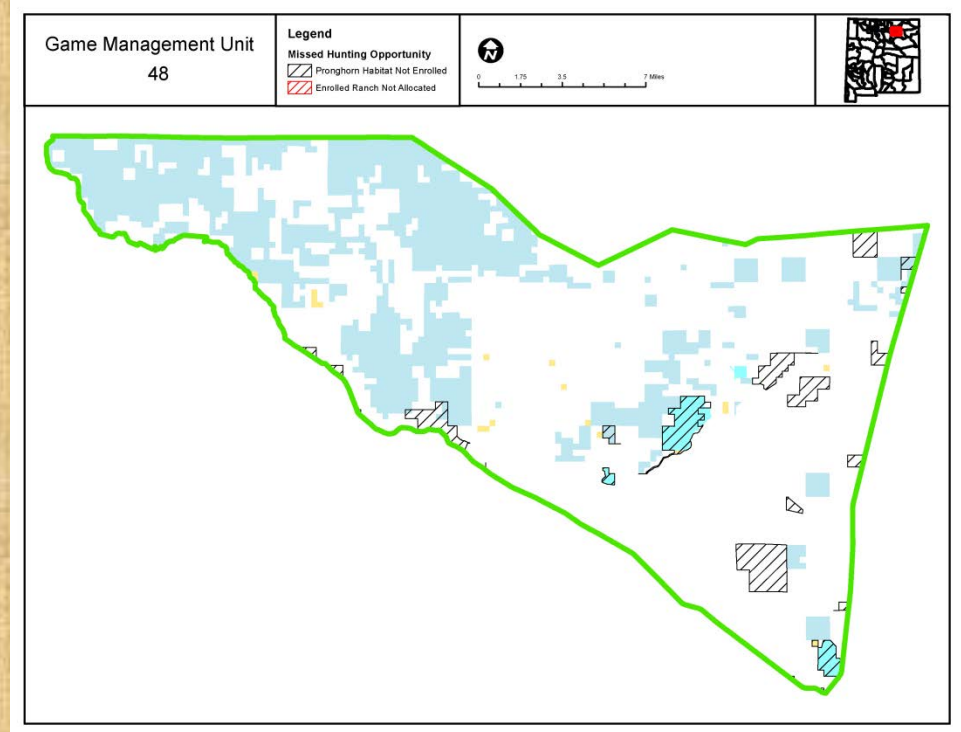
- Publicly accessible land: 28%

DEER

- Public draw deer: 85% of licenses
- Total deer licenses: 170

PRONGHORN

- Current private:
 - Allocated: 37
 - Converted: 24
 - Unconverted: 13
- Current A-PLUS public:
 - 9 licenses
- Proposed public rifle:
 - 10 licenses
- Expected private rifle:
 - ~30 licenses



<u>Proposed Public Hunt Structure</u>			
Hunt	Date	Licenses	Bag
Youth	Aug 17-21	NA	
Archery	Sept 1-24	NA	
1st Rifle	Sept 28-Oct 2	5	MB
2nd Rifle	Oct 5-9	5	MB
MIP	Oct 5-9	NA	
3rd Rifle	Oct 12-16	NA	
Total		5	

