

# **Open Gate**

## **19.34.7 NMAC**

**October 22, 2021**

**New Mexico State Game Commission Meeting**  
**Las Cruces, NM**



# Open Gate Program: Current Status

- Personnel = 1 Program Manager
- ~\$200,000.00 Annual Budget
- 54,530 Pvt. Acres Under Agreement
- 154,334 Public Acres Accessed
- 9.76 Stream Shore Miles Under Agreement
- 762 Water Surface Acres Under Agreement
- Property Types



# Open Gate Program: Current Status

- Focus – Small Game, Fishing and Access
- No dollar cap/landowner
- Attempting to gain voluntary survey Information from users
- No Sign-in system in place



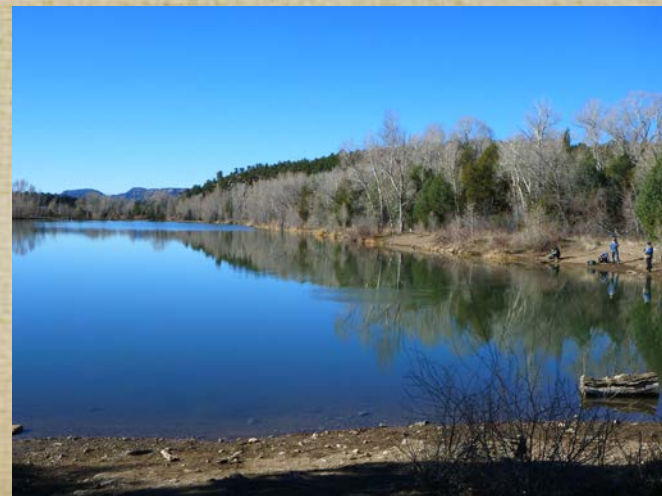
# Open Gate Program State by State Comparisons On-Site Access Only

	New Mexico	Colorado	Idaho	Montana	Oklahoma	Texas	Utah	Wyoming
<b>Acres Leased</b>	55,292*	223,000	331,215*	7.1 Million*	90,000	1,155,968	65,191*	1,703,651*
<b>Annual Cost</b>	\$169,606**	\$850,000	\$466,000	\$8,335,519**	\$1,000,000	\$1,000,000	\$100,000	\$1,170,839**
<b>Cap/Landowner</b>	No	No	No	\$25,000/Year	\$50,000/Year*	Funding Imposed		
<b>Personnel</b>	1	1*	8**	37***	2	79*		5
	*Includes Water Surface Acres (154,333 Public Acres accessed)	*Uses Vendors to Sign up Properties	*Private Acres Only – Public Opened as a result – 577,872	*Block Management Program Acres Only	*Under Consideration	*4 FTE's, 75 Part Time Field Staff	*Includes Water Surface Acres – not stream miles	*166,635 Public Access acres, 4,005 Lake Acres and 87 Stream Miles
	** Actual FY 2021 - Includes All Access Types		**1 FTE, 7 Regional Staff	** FY 20 Expenditures Through Hunting Access Program				** 2020
				***Program Bureau Chief, 6 FTE Regional Coordinators, 30+ Seasonal Staff				

# New Mexico Open Gate Program Concept

## Create 4 separate Open Gate participation agreements:

1. Public Land Access Agreement (obtain access through private to inaccessible public land)
  2. Private Land Big Game Hunting Agreement
  3. Private Land Small Game Hunting Agreement
  4. Private Land Fishing Agreement
- Can participate in one or more agreements but must qualify for each independently

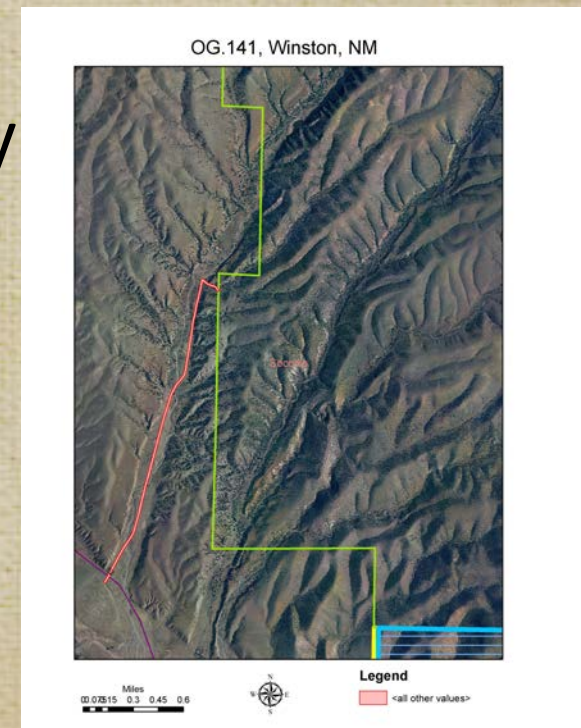


# New Mexico Open Gate Program Concept

## Public Land Access Agreement:

### Potential payment components:

- Amount of public land access currently available in that GMU (need)
- Game species abundance/GMU priority for species
- Amount of public land readily accessed by hunters



# New Mexico Open Gate Program Concept

## For all Private Land Big Game, Small Game and Fishing Agreements:

- Property may require check-in for use
- May receive bonus payments based on amount of public use on the property
- Existing landowner may be eligible for a referral bonus for neighboring property signups



# New Mexico Open Gate Program Concept

## Private Land Big Game Hunting Agreement:

- Includes:
  - Deer, Elk, Pronghorn, Bighorn, Ibex, Barbary, Javelina, Oryx, Bear and Cougar

## Private Land Small Game Hunting Agreement:

- Includes:
  - Dove, Quail, Turkey, Pheasant, Sandhill Crane and Waterfowl

## Per acre payment systems for both types of agreements based on:

- Amount of public land access available in that GMU (need)
- Local game species availability





# New Mexico Open Gate Program Concept

## Private Land Fishing Agreement:

- Includes:
  - All cold and warm water opportunities
  - Stream or lake/pond opportunities
- Payment system based on:
  - Amount of public land access available in that GMU (need)
  - Stream length access
  - Pond Surface Acreage



# New Mexico Open Gate Program Concept

- Need a Bench Mark of \$1,000,000.00 to Build Program
- Phase In of Program for Success
- Hire Two Technicians for Field Work



# *Questions?*



Big Game Habitat Value		Small Game Habitat Value		Fishing Value		Public Access Value	
Base Habitat	~\$1.50	Base Habitat	~\$.50	Surface Ac.	~\$500	Base Value	Up to \$0.50
Cropland	~\$3.00	Cropland	~\$1.25	Stream Shore	~\$2,500		
Wetland	~\$8.00	Wetland	~\$10.00				
Riparian	~\$10.00	Riparian	~\$8.00				
Inaccessible Public Land Bonus		Available Public Land		Hunting Quality			
>10%	Base X 1.25	0-25% in GMU	Base X 2	Good	Base X 2		
				Excellent	Base X 3		

