



Wildlife Management Division

EIK 19.31.14 NMAC

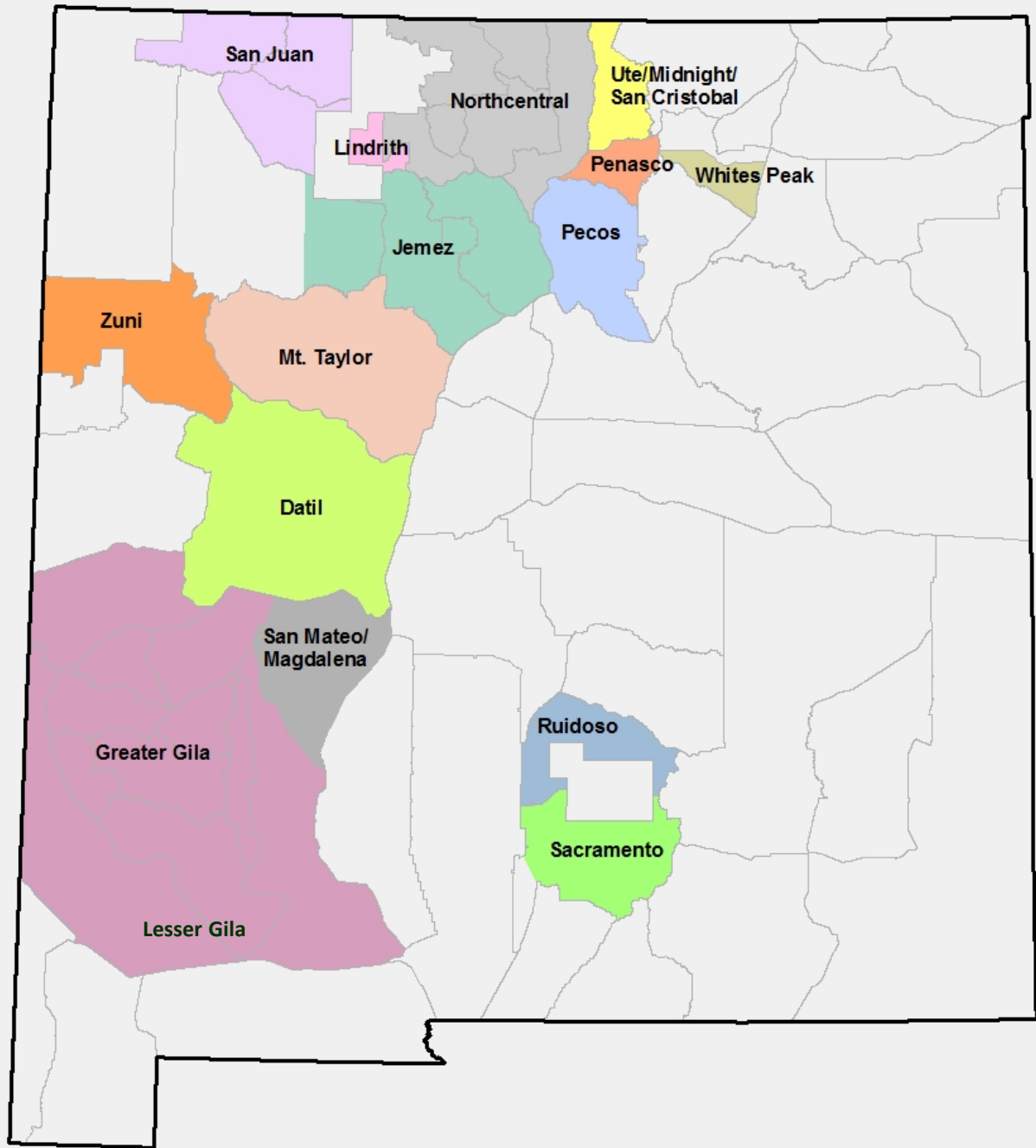
August 23, 2018

State Game Commission Meeting

Gallup, NM



NMDGF Elk Herd Units



2017 Harvest Data



- Statewide 36,704 licenses sold/converted
- 81% of hunters reported
- 39% successful in harvesting
- Estimated statewide harvest
 - Bulls = 8,367, Cows = 6,021
- Satisfaction rating = 3.66

Public Comment on Proposed Changes

- 455 attendees at 9 public meetings
- Supportive of ≥ 1 aspect of proposal (27)
- Opposed to decreasing youth opportunity (5)
- Senior hunts (support = 4, opposed = 7)
- Opposed to some specific proposals in GMUs 15, 34, 48 (4)
- COER comments (25)*
- Over-the-counter licenses on private land (oppose = 5; support = 1)
- Put EPLUS maps online (3)
- Authorization allocation to private landowners (9)*
- Unrelated/draw process comments/unable to open attachments (74)

Proposed Changes Summary

- Adjust season for calendar date shifts
- Adjust licenses to current public-private split
- Youth encouragement hunts
 - Sell to youth for 1st 14 days, then open to seniors 65 years & older
- Move APR hunts to draw
- Adjust COER boundaries in primary elk management zone

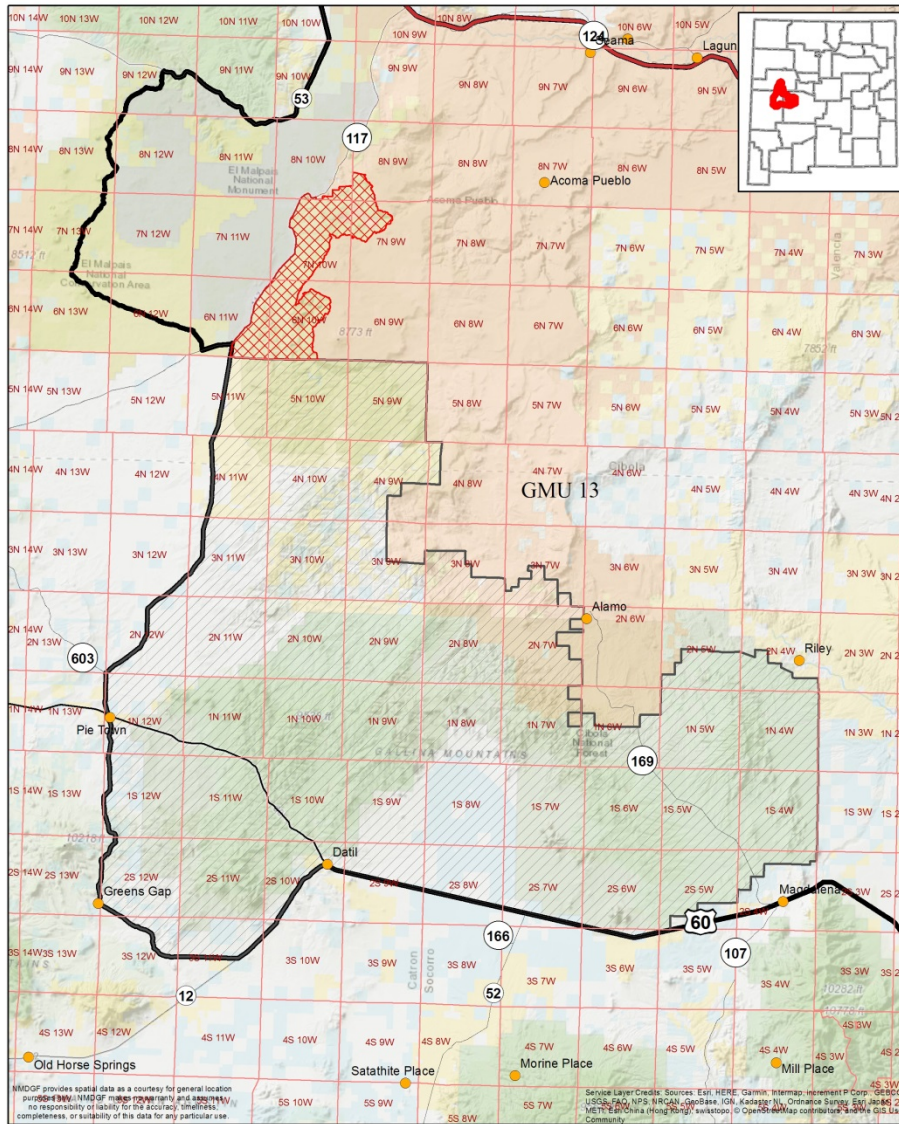


SW Area

- **GMU 13 (Datil Herd)**: Stable to slightly increasing (33:100:32)
 - COER: Extend boundary to NW (include Narrows area)
- **GMUs 15, 16A-E (Greater Gila Herd)**: Stable to slightly increasing (34:100:33)
 - No changes
- **GMU 17 (San Mateo-Magdalena Herd)**: Stable to slightly increasing (49:100:41)
 - No changes
- **GMU 19 (White Sands Missile Range)**:
 - Create a new any-legal-weapon draw hunt of 3 ES licenses
- **GMUs 21A-B, 23, 24 (Lesser Gila Herd)**: Stable to slightly increasing (42:100:38*)
 - Create late season MB archery hunts of 15 licenses in GMUs 21A, 21B, 23
 - COER: Extend 21B boundary south



GMU 13 Proposed COER Expansion



Core Occupied Elk Range (COER) Area of Game Management Unit 13

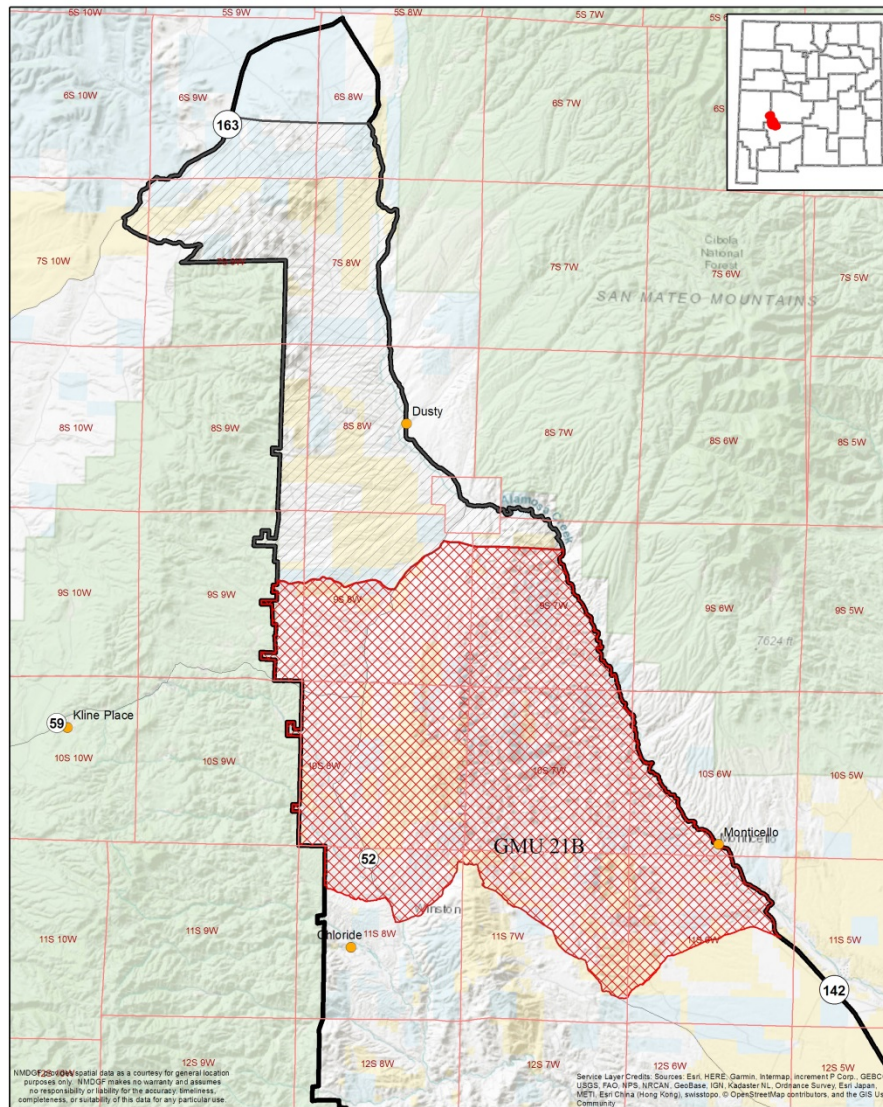
- Core Occupied Elk Range
- Proposed COER addition

1 in = 9 miles






July 2018

GMU 21B Proposed COER Expansion



Core Occupied Elk Range (COER) Area of Game Management Unit 21B

-  Core Occupied Elk Range
-  Proposed COER addition

 1 in = 4 miles



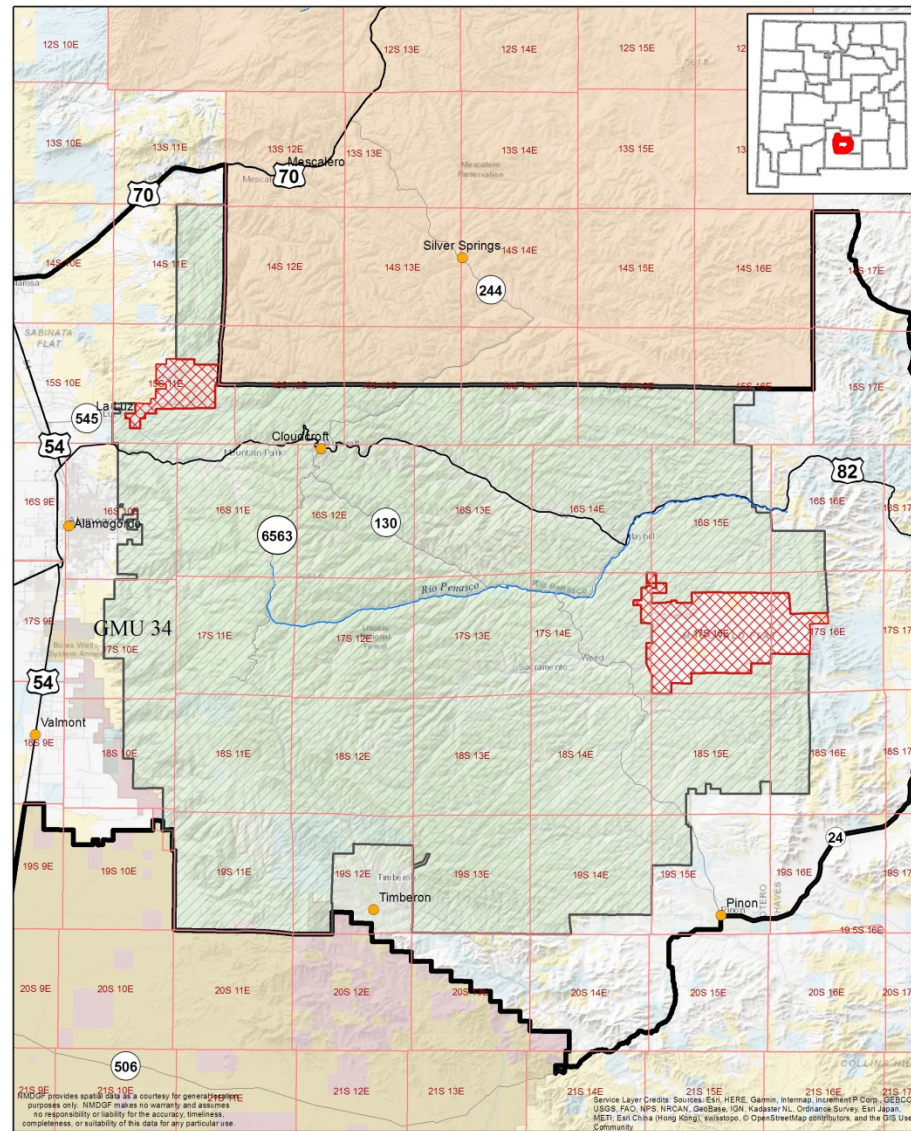
July 2018

SE Area



- **GMU 30:**
 - Create Oct. 1-5 hunt of 10 ES (any-legal-weapon) licenses
- **GMU 34 (Sacramento Herd):** Increasing (49:100:49)
 - Increase draw A licenses to 3 hunts of 350 licenses and maintain youth A licenses at 120
 - Change MB hunts to ES hunts
 - Change APR hunt to APR/A hunt and put in public draw
 - COER: Expand boundary east and west
- **GMU 36 (Ruidoso Herd):** Stable to slightly increasing (71:100:52)
 - Increase MB and ES licenses by 15%
- **GMU 37:**
 - Move 10 MB licenses to new Oct. 1-5 hunt (any-legal-weapon)
 - Put late season bow APR hunt in the draw
- **GMU 38:**
 - Create Oct. 1-5 hunt of 10 ES (any-legal-weapon) licenses




GMU 34 Proposed COER Expansion



Core Occupied Elk Range (COER) Area of Game Management Unit 34

-  Core Occupied Elk Range
-  Proposed COER addition

 1 in = 6 miles



July 2018

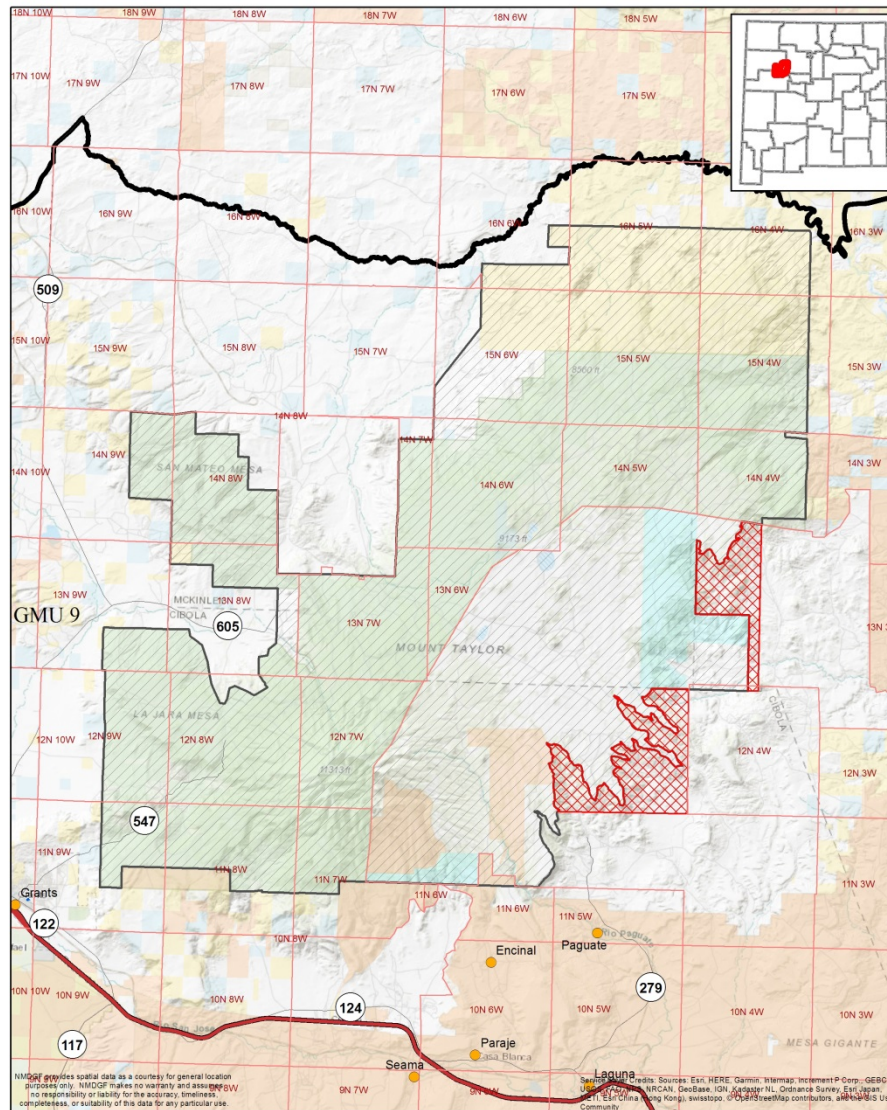
NE Area

- **Special management zone designation**
 - GMUs 46, 54, 55
- **GMU 42/47/59**
 - Combine units to create new ES hunts; 1 any-legal-weapon hunt Oct. 1-5 of 5 licenses and 2 new archery hunts in Sept. of 10 licenses each.
- **GMU 45 (Pecos Herd): Stable (27:100:27)**
 - No changes
- **GMU 48 (Whites Peak Herd): Stable (32:100:44)**
 - Move Dec MB hunt to Oct
- **GMU 55**
 - Valle Vidal: Separate YO and adult hunts
 - Colin Neblett: Combine north and south hunt zones
- **GMU 56 and 57/58**
 - Create new any-legal-weapon MB hunt Oct. 1-5 (5 licenses each)
- **GMU 53 (Ute-Midnite-San Cristobal Herd): Stable (28:100:30)**
 - No Changes



NW Area


- **GMU 2 (San Juan Herd)**: Stable to slightly increasing (34:100:36)
 - Remove from Quality designation
 - Create late season hunt in 2C of 50 licenses
- **GMUs 4, 5B, 50, 51, 52 (Northcentral Herd)**: Stable to slightly increasing (38:100:40)
 - GMU 4: Change bag limit on WMAs and private land from MB to MB/A
 - Create new A hunt of 15 licenses (any-legal-weapon) on Rio Chama WMA,
 - Include Rio Chama as part of the Humphrees archery hunt.
- **GMUs 6A-C, 7 (Jemez Herd)**: Stable (33:100:32)
 - GMU 6B: Eliminate MI hunt, increase youth hunts from 35 → 60, change MB bag limit to ES, and increase ES bow hunts by 5 licenses each
- **GMU 9 (Mt. Taylor Herd)**: Declining (25:100:16)
 - Eliminate all cow hunts, reduce MB and ES licenses by 25%
 - COER: Expand to east to include elk winter range
- **GMU 14:**
 - Create Oct. 1-5 hunt of 10 ES licenses (any-legal-weapon)

GMU 9 Proposed COER Expansion



Core Occupied Elk Range (COER) Area of Game Management Unit 9

-  Core Occupied Elk Range
-  Proposed COER addition

 1 in = 5 miles

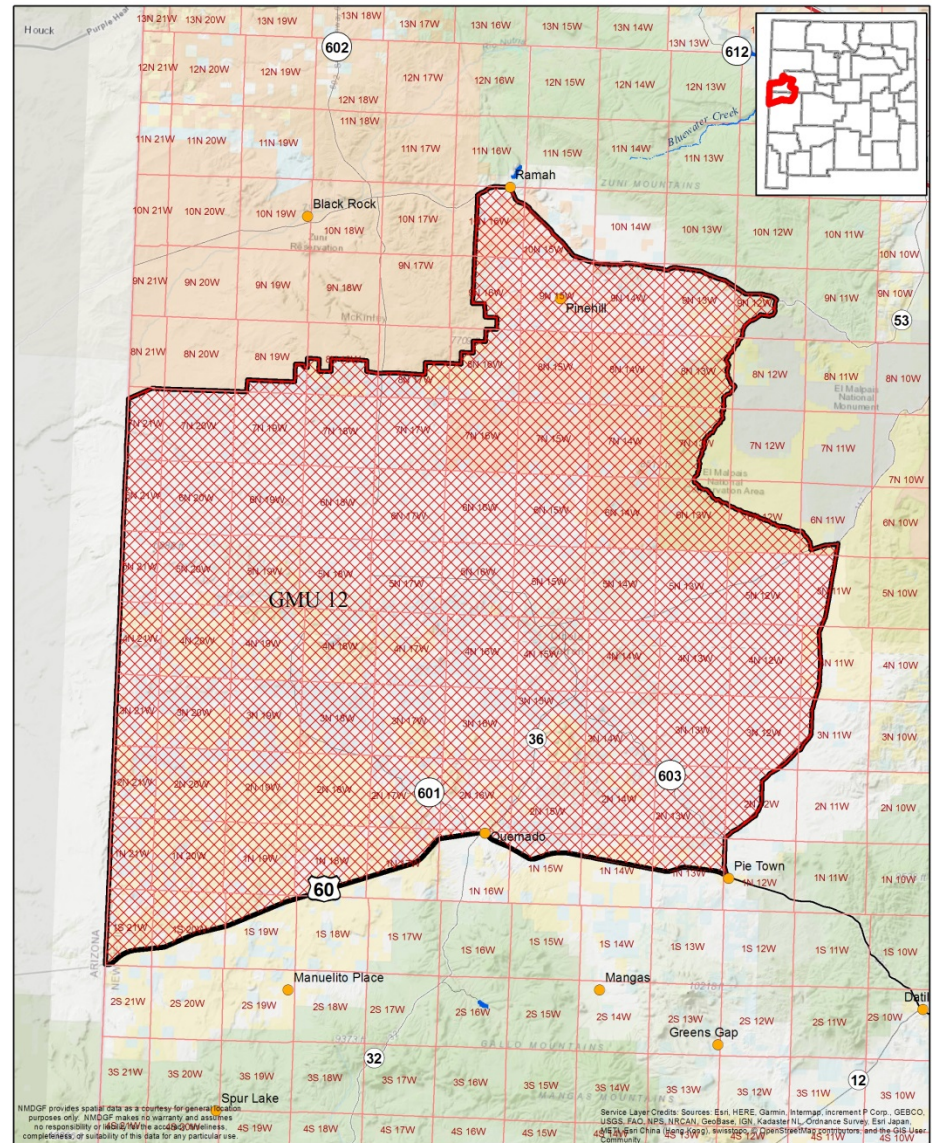


July 2018


GMU 12 Proposed COER Creation


• GMU 12 (Fence Lake Herd)

- Create COER boundary
- Quality designation
- 10% increase in licenses across all bag limits (MB/A/ES)
- Move APR hunt into draw



Core Occupied Elk Range (COER) Area
of Game Management Unit 12

 Proposed COER addition

 1 in = 10 miles



July 2018

Questions?



Land Type Breakdown

Land Type	Acres	Percent
PRIVATE	866,183	57%
PUBLIC	647,187	43%
TOTAL	1,513,370	100%

Accessibility

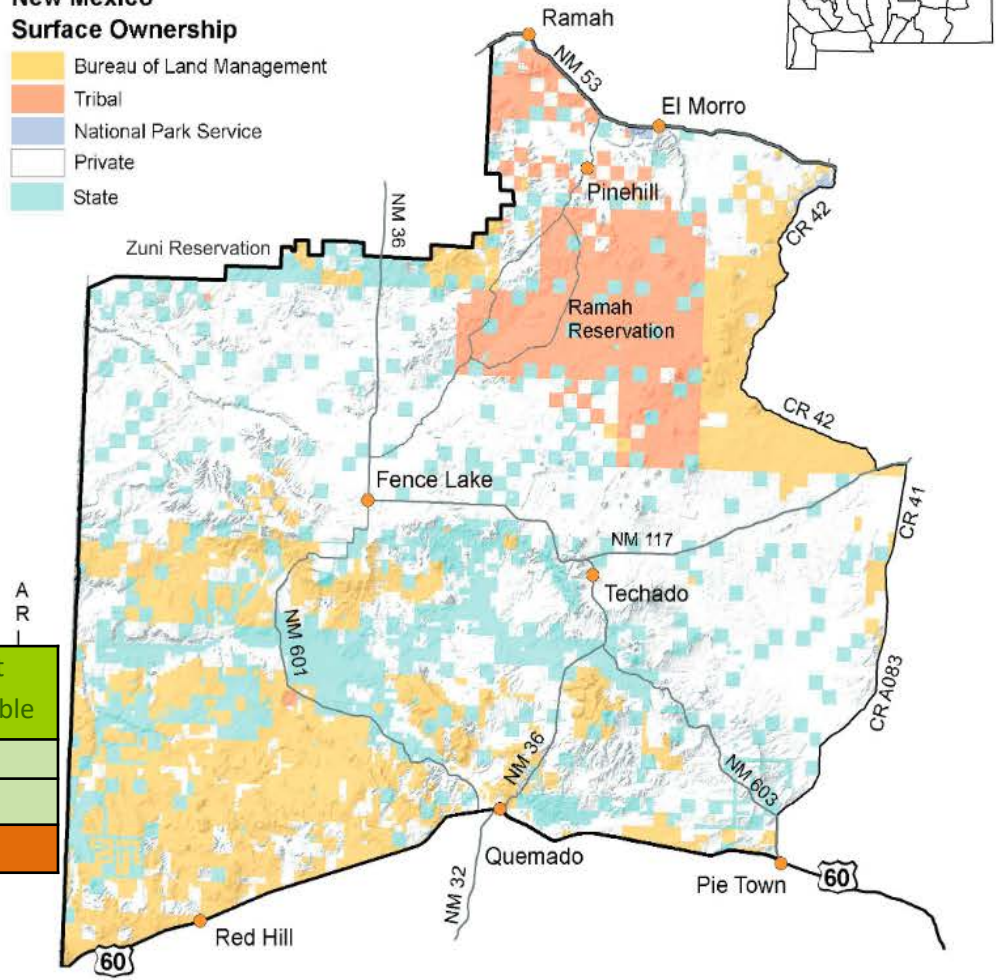
Owner	Access Questionable	Accessible by Public	Total	Percent Accessible
BLM	12,638	336,193	348,831	96.37%
STATE	59,518	238,838	298,356	80.05%
TOTAL	72,156	575,031	647,187	88.85%



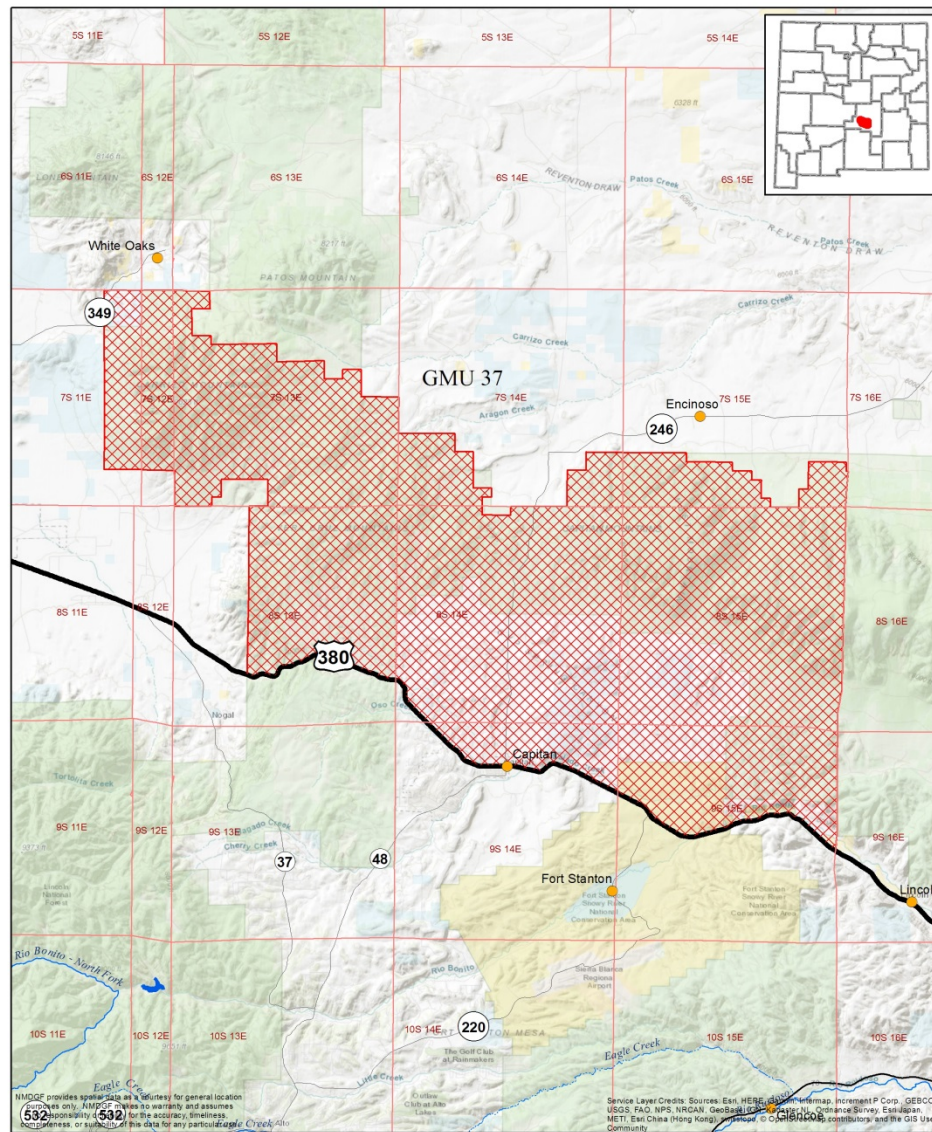
Game Management Unit 12

New Mexico Surface Ownership


- Bureau of Land Management
- Tribal
- National Park Service
- Private
- State




GMU 37 Proposed COER Creation



Core Occupied Elk Range (COER) Area
of Game Management Unit 37

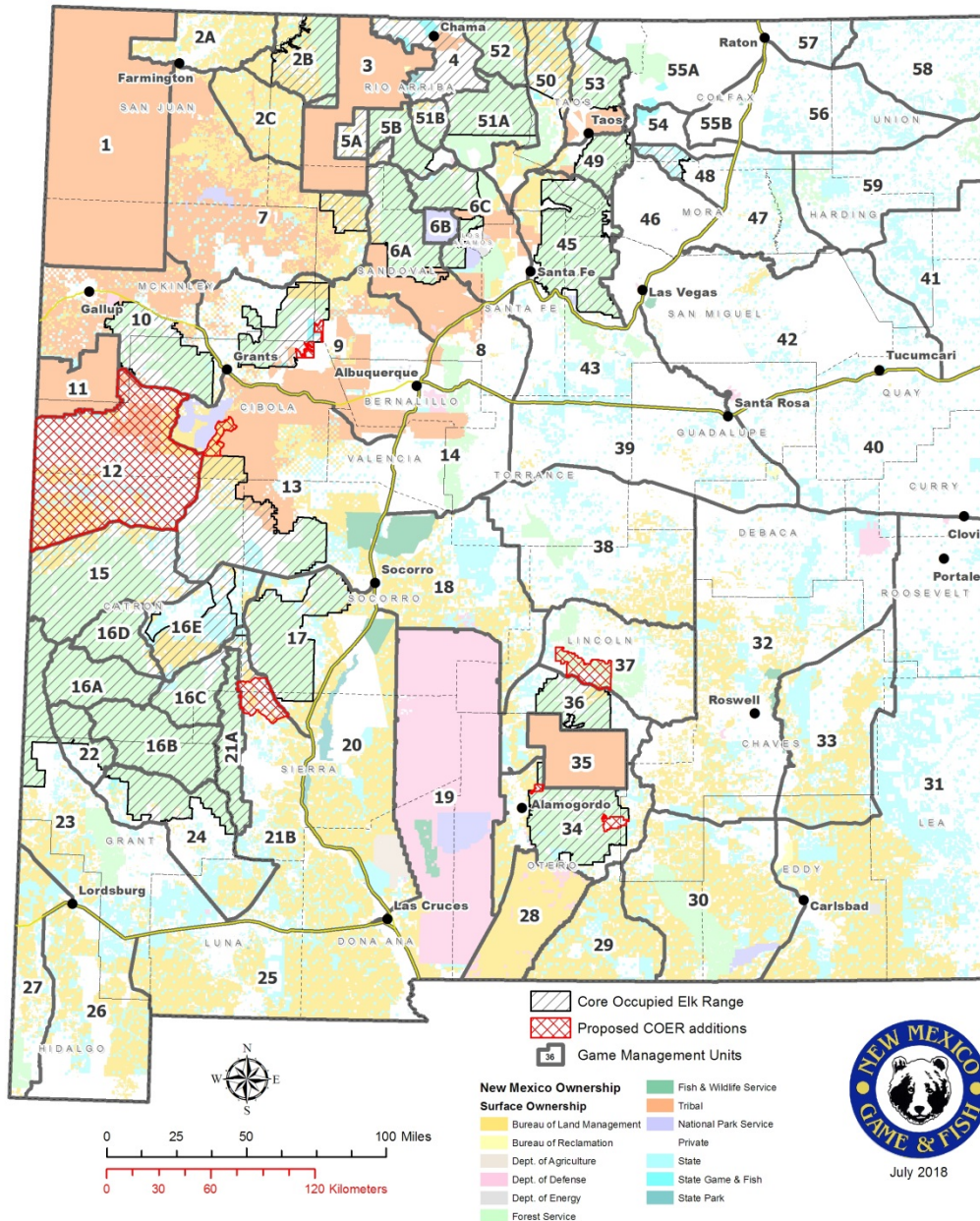
 Proposed COER addition

 1 in = 3 miles



July 2018

New Mexico COER Areas & Proposed Additions



July 2018