

Deer

19.31.13 NMAC

October 14, 2022

New Mexico State Game Commission Meeting



Summary of Public Comments

Hosted 4 hybrid in-person/virtual public meetings (78 attended in person, 74 tuned in virtually)

The Department received 113 official public comments through 10/13/22

	For	Against	Modify	Indifferent
Remove scopes from muzzleloaders*	19	37	16	1
Adjust NW Youth Hunt as proposed	7	3		
Decrease licenses in NW units	9			
Add FAWTD in 16/21/22/26	4	3		
Create GMU 7 & 9 January bow hunt**	3	1		
Support all recommendations	3			
Reduce GMU 34 and other SE licenses	2	1		
Create GMU 27 Sept archery hunt		1		
Licenses increase in 56 and 58		1		
Remove "Excluding Fort Stanton"	1			
Designate GMU 8 as quality	1			
Other***	27			



Deer Biology

- Statewide population estimate: ~80,000-100,000
- Population growth driven by female and fawn survival
- Buck harvest not limiting to population growth
- >35 fawns:100 does over the long-term required for stable populations
- 5-Year Statewide Average: 32 bucks:100 does:36 fawns (2017-2021 survey data)



2021-2022 Deer License and Harvest



- 37,182 licenses sold
 - 99% are for bucks
- 85% of hunters reported
- 28% successful in harvesting
- Estimated statewide harvest
 - Bucks = 8,689; Does = 138
- Satisfaction rating = 3.2



Proposed Adjustments: Statewide

- Remove scopes from Muzzleloader.
- Adjust season dates to account for calendar shift.
- Adjust some hunts to minimize overlap of weapons used or species hunted.



Proposed Adjustments: NW Area

- Bring back October YO hunt in 2A & 2B.
 - GMU 2A: move 25 tags from November into October, keep 15 tags in November
 - GMU 2B: move 125 tags from November into October, keep 25 tags in November
- Create November rifle hunt on L Bar/Marquez WMA (10 tags)
- Create GMUs 7 & 9 – January archery hunt
 - 15 tags each
- Designate GMU 8 as a Quality Unit



Proposed License Adjustments: NW Area

GMU	Total Change	% Change
2B	-125	-6%
5B	5	9%
6A/6C	10	3%
7	25	45%
8	15	13%
9	30	75%
12	-5	-3%
14	15	10%
51B	10	25%
NW Region Total	-20	-0.4%



Proposed Adjustments: SW Area

- Add second hunt code for WSMR
 - Rhodes Canyon and Stallion Range hunts (5 tags each)
- Create December FAWTD rifle hunts for GMUs 21 and 26
- Create September FAMD and FAWTD archery hunts for GMU 27
- Open River Ranch and Double E WMAs to deer hunting



Proposed License Adjustments: SW Area

GMU	Total Change	% Change
19 (WSMR)	5	20%
20	5	2%
21	25	1%
23	35	10%
24	55	3%
26	25	8%
27	35	10%
SW Region Total	185	2%



Proposed Adjustments: SE Area

- Reduce Huey youth antlerless licenses to 2 hunts of 5 licenses each
- Move hunts in 34 to minimize overlap of weapons used or species hunted
- Remove language “Excluding Fort Stanton”
- Open Pipkin Ranch to deer hunting



Proposed License Adjustments: SE Area

GMU	Total Change	% Change
29	-40	-7%
30	-160	-6%
31	-50	-4%
32	-125	-7%
33	-10	-2%
34	-170	-6%
37	-25	-2%
38	-35	-6%
39	-10	-6%
40	15	10%
SE Region Total	-610	-5%



Proposed Adjustments: NE Area

- Add ESWTD hunt in 55A (private land units)



Proposed License Adjustments: NE Area

GMU	Total Change	% Change
42	15	14%
43	5	9%
45	15	2%
47	5	7%
48	15	9%
49	25	9%
53	10	4%
54/55	-20	-25%
56	5	7%
58	5	3%
59	5	3%
NE Region Total	85	3%



Total Draw Deer Licenses

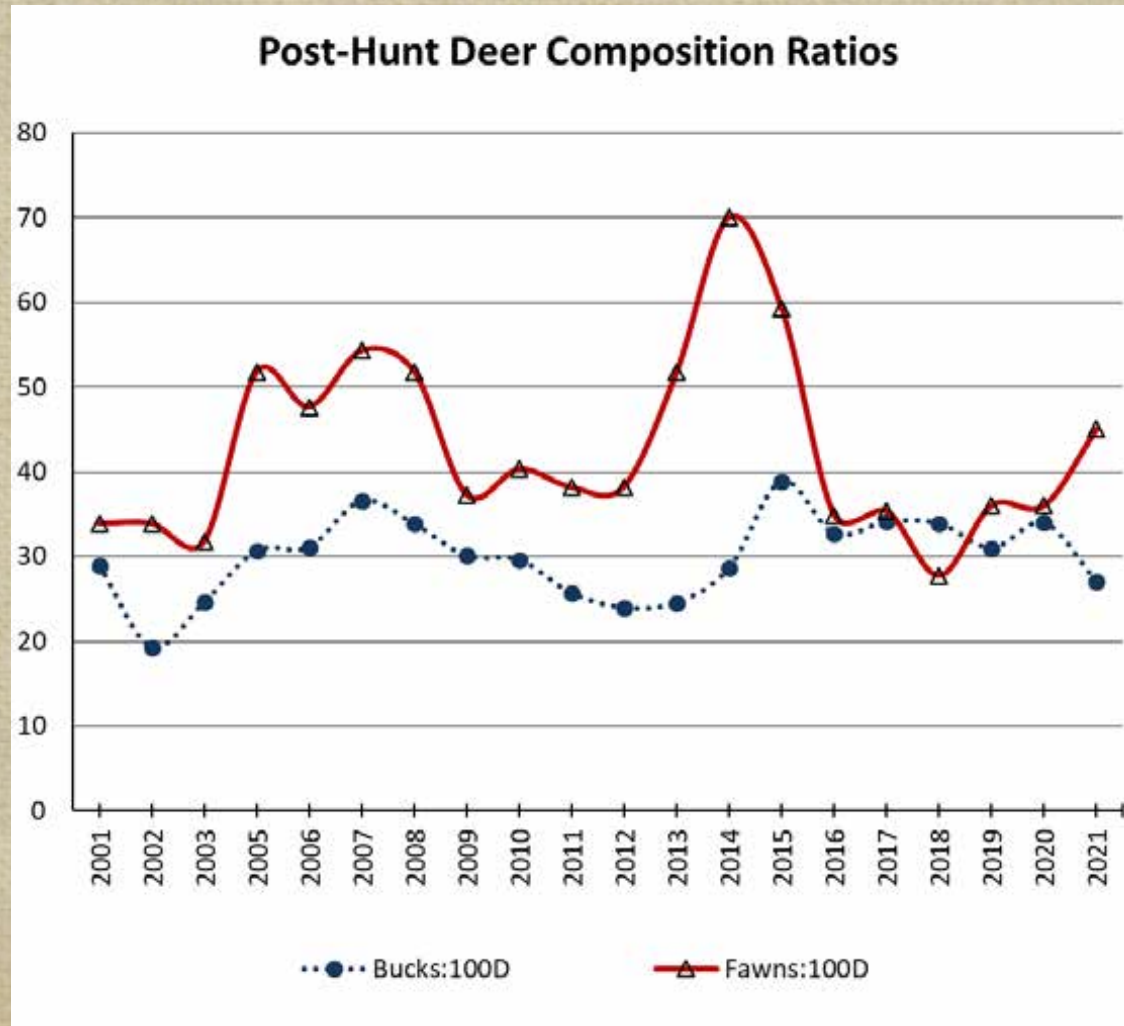
STATEWIDE TOTAL	Current	Proposed	Total Change	% Change
	31,362	31,002	-360	-1%



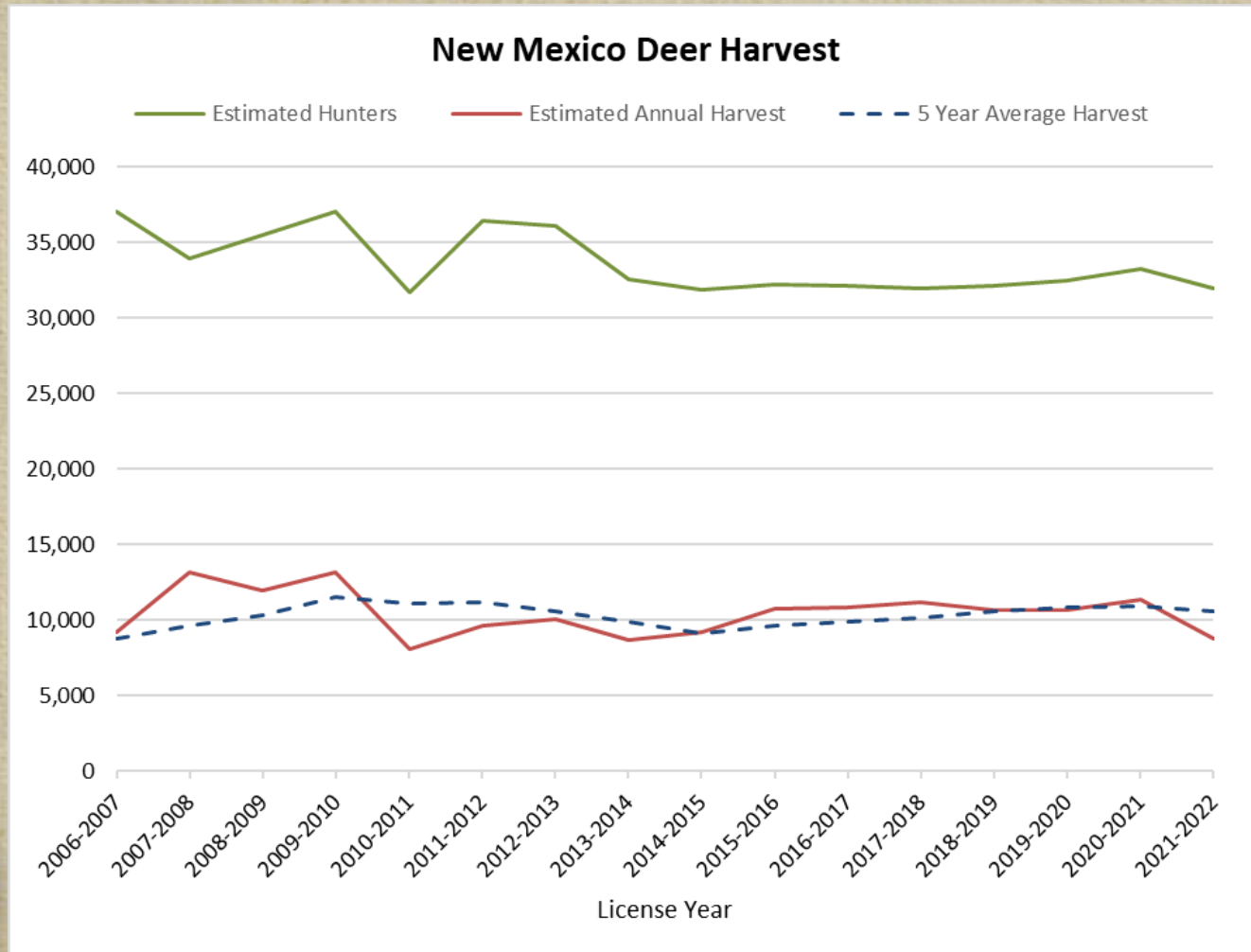
Questions



Statewide Composition Ratios



Statewide Deer License and Harvest



Management Strategies

- Standard Hunts (also defined as Opportunity Hunts)

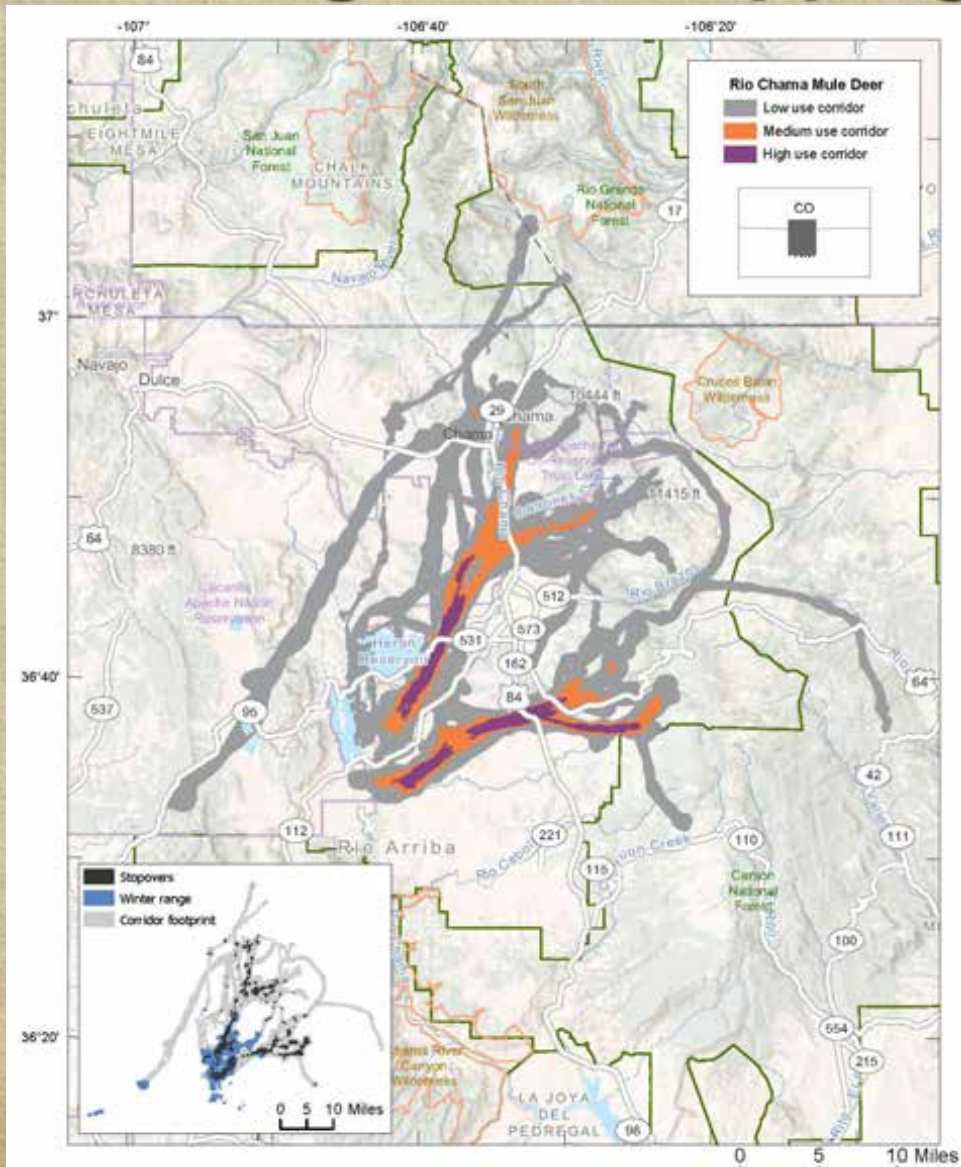


Management Strategies

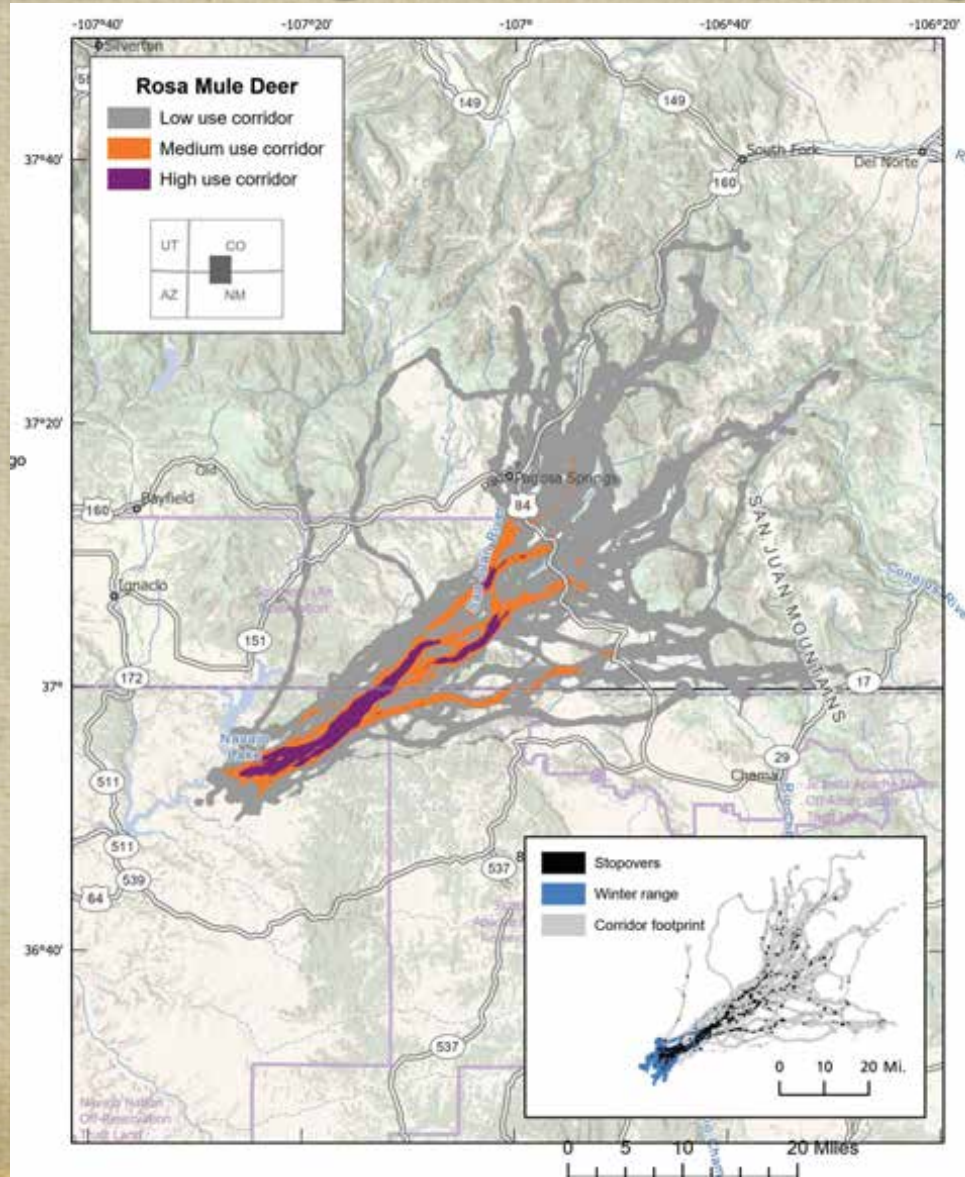
- Quality Hunts (defined in rule)



Deer Migration Mapping



Deer Migration Mapping



Summary of previous rule changes

- Adjusted seasons for calendar dates
- Adjusted draw license numbers based on biological data & management goals
 - Increased total draw licenses by ~300 statewide
- Created some new hunting opportunities
- Separated archery season into September & January (2 different seasons)
- Standardized most youth hunts to a 9 day hunt surrounding Thanksgiving week



	Parameter	Decrease	Maintain	Increase
Opportunity	Fawn:Doe ^a	<35	35 - 45	-
	Buck:Doe ^a	<15	15 - 25	>25
	Rifle and Muzzleloader Success ^b	<20%	20% - 35%	>35%
	Archery Success ^b	<10%	10 - 25%	>25%
	Hunter Density (mi ²) ^c	>1	0.5 - 1	<0.5
Quality	Fawn:Doe ^a	<35	35 - 45	-
	Buck:Doe ^a	<30	30 - 40	>40
	Rifle and Muzzleloader Success ^b	<40%	40 - 55%	>55%
	Archery Success ^b	<20%	20 - 35%	>35%
	Hunter Density (mi ²) ^c	>0.3	0.1 - 0.3	<0.1
	Population Trend ^d	Decreasing	Stable	Increasing
	Hunter Satisfaction	<3.0	3.0 – 3.5	>3.5
	Hunter Satisfaction Trend	Decreasing	Constant	Increasing



General Proposed Changes

- Adjust seasons for calendar shift
- Adjust draw license numbers based on biological data, management goals, & public comment

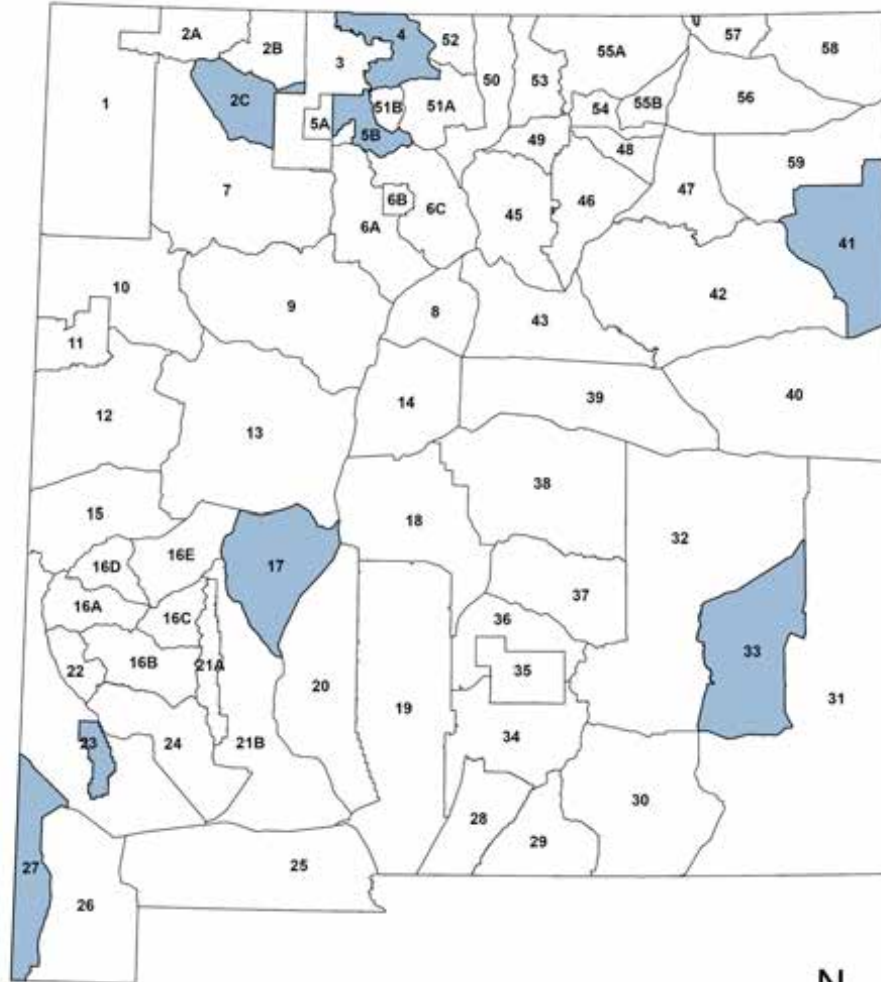


Data Collection/license determination

- Post hunt surveys
- Trends in harvest success and hunter satisfaction
- Try to maintain consistency in license allocations



Quality Deer Hunt Areas



0 20 40 80 Miles

Created 6 April 2022



S.Liley Aug. 19, 2022

9/21