

Bear and Cougar Rule Development 19.31.11 NMAC



August 22, 2019
Bear and Cougar Rule
Santa Fe, NM

Rule Development Timeline

- **July, August, & September** – present at SGC meetings
- **July** – Initial NMDGF ideas posted on the website
- **August** – Public meetings throughout the state
- **Early October** - Final NMDGF proposed rule posted on the website
- **November 21st** – Act on rule

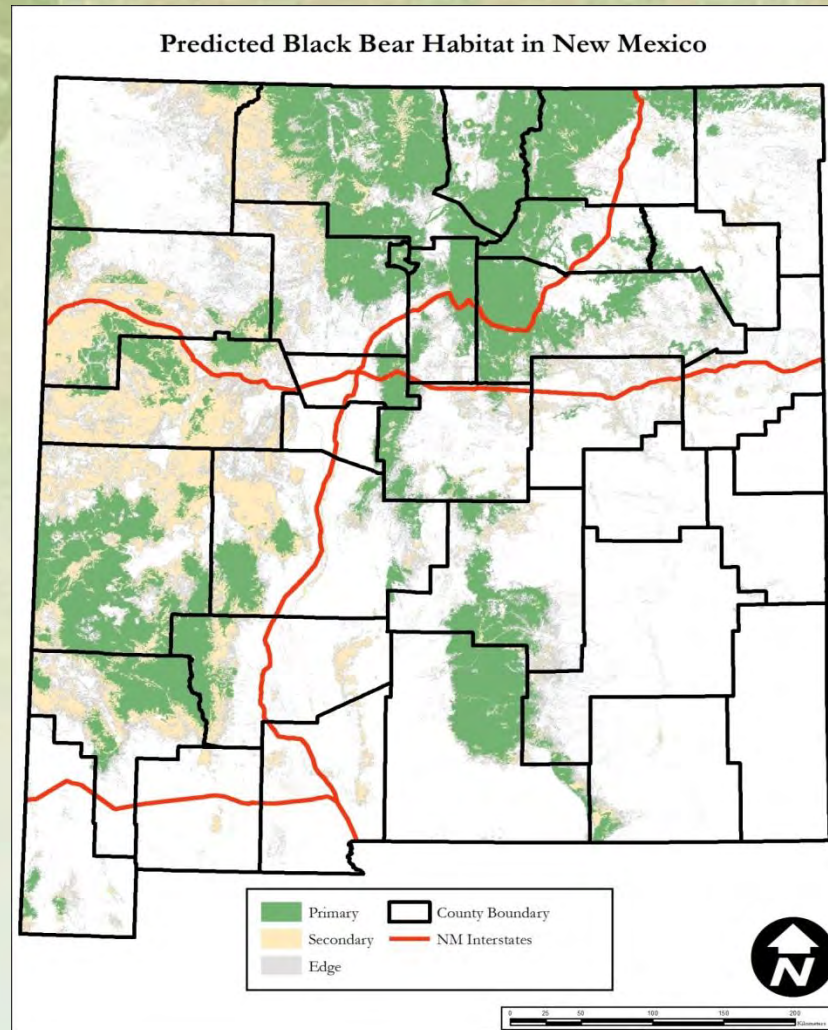
Bear Proposals



- **Not proposing changes to bear harvest limits**
- **Currently not proposing changes to Bear Management Zone boundaries**
- **Propose changing the season start and end dates for BMZs 10, 12 and 13**
- **Include Urraca in August draw hunts in NE**

Habitat Model

Primary habitat = 54,793 km²
(18% of NM)



Population Information

Mountain Range	Costello et al. (2001) Density Estimates (bears/100 km ²)	Gould et al. Density Estimate (bears/100 km ²)
Northern Sangre de Cristo	17.0	21.9*
Southern Sangre de Cristo	17.0	19.7*
Sandia	13.2	18.4†
Northern Sacramento	17.0	20.1†
Southern Sacramento	17.0	16.5*

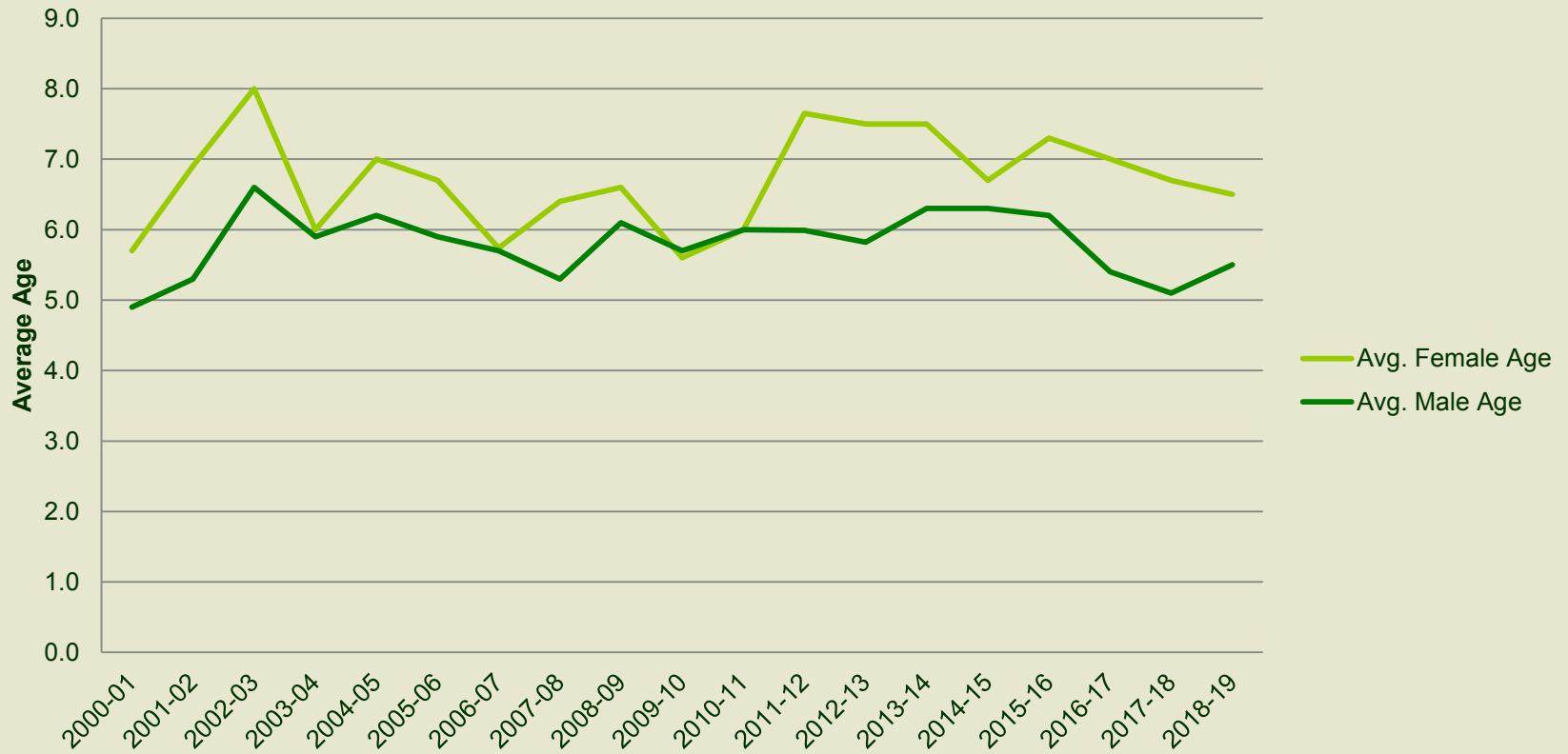
†Gould et al. 2016, *Gould et al. 2018

Bear Harvest

Year	Sport Harvest (females)	Max Allowable Harvest	Depredation	Other	Total	# of Zones Closed
2016-17	438 (154)	804	50	13	501	4
2017-18	483 (178)	804	85	56	624	5
2018-19	496 (188)	804	68	36	600	3
AVG	472 (173)	804	68	35	575	4

Bear Age at Mortality

Average Ages of Bear Mortalities from 2000-2019



Bear Harvest

Zone	Game Management Units	Estimated Primary black bear habitat (km ²)	Harvest Limit (Female Harvest Limit)
			2020 – 2024
1	4, 5, 6, 7, 51, 52	9,296	158 (63)
2	2	880	15 (6)
3	49, 50, 53	2,109	65 (26)
4	45, 46, 48	5,778	109 (43)
5	54, 55	4,723	92 (37)
6	39, 40, 41, 42, 43, 47, 59	4,689	33 (13)
7	56, 57, 58	1,645	35 (14)
8	8	719	11 (4)
9	9, 10	2,963	36 (14)
10	12, 13, 15, 16, 17, 18, 20, 21, 22, 23, 24, 26, 27	15,488	146 (58)
11	37, 38	1,811	36 (14)
12	34	2,428	33 (13)
13	36	1,184	16 (6)
14	14	1,267	19 (7)
Totals		54,793	804 (318)

Cougar Proposals



- No longer allow traps as a method for sport harvest
- Harvest limit adjustments to align with data
- Adjust Cougar Management Zone in L and J; combine B and F

Cougar Harvest

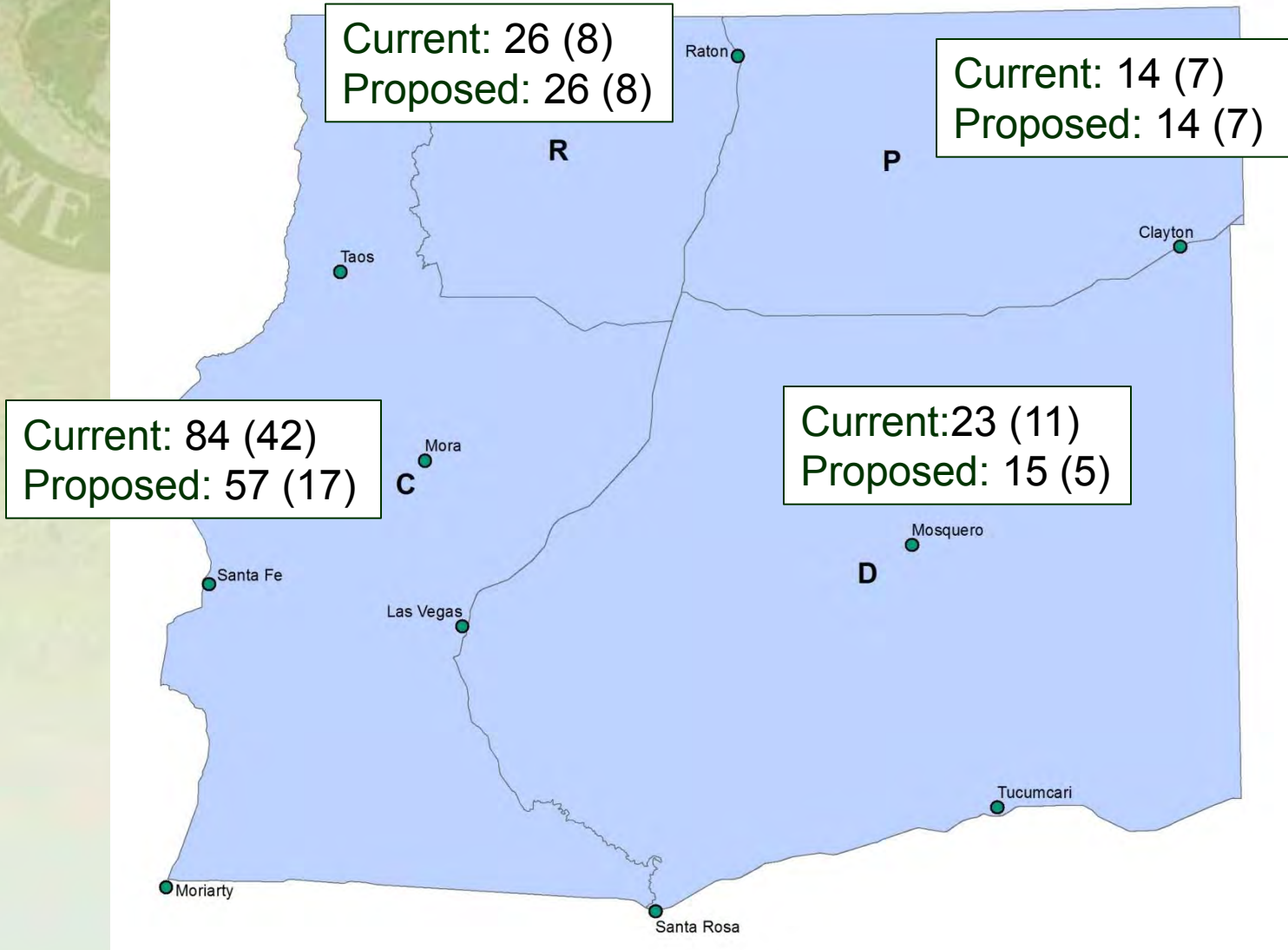
Year	Sport Harvest (females)	Max Allowable Harvest	Depredation	Other	Total	# of Zones Closed
2016-17	244 (90)	749	21	35	300	2
2017-18	238 (93)	749	20	34	292	5
2018-19	344 (117)	740	25	40	409	4
AVG	275 (100)	746	22	35	331	4

Cougar Sport Harvest Limits

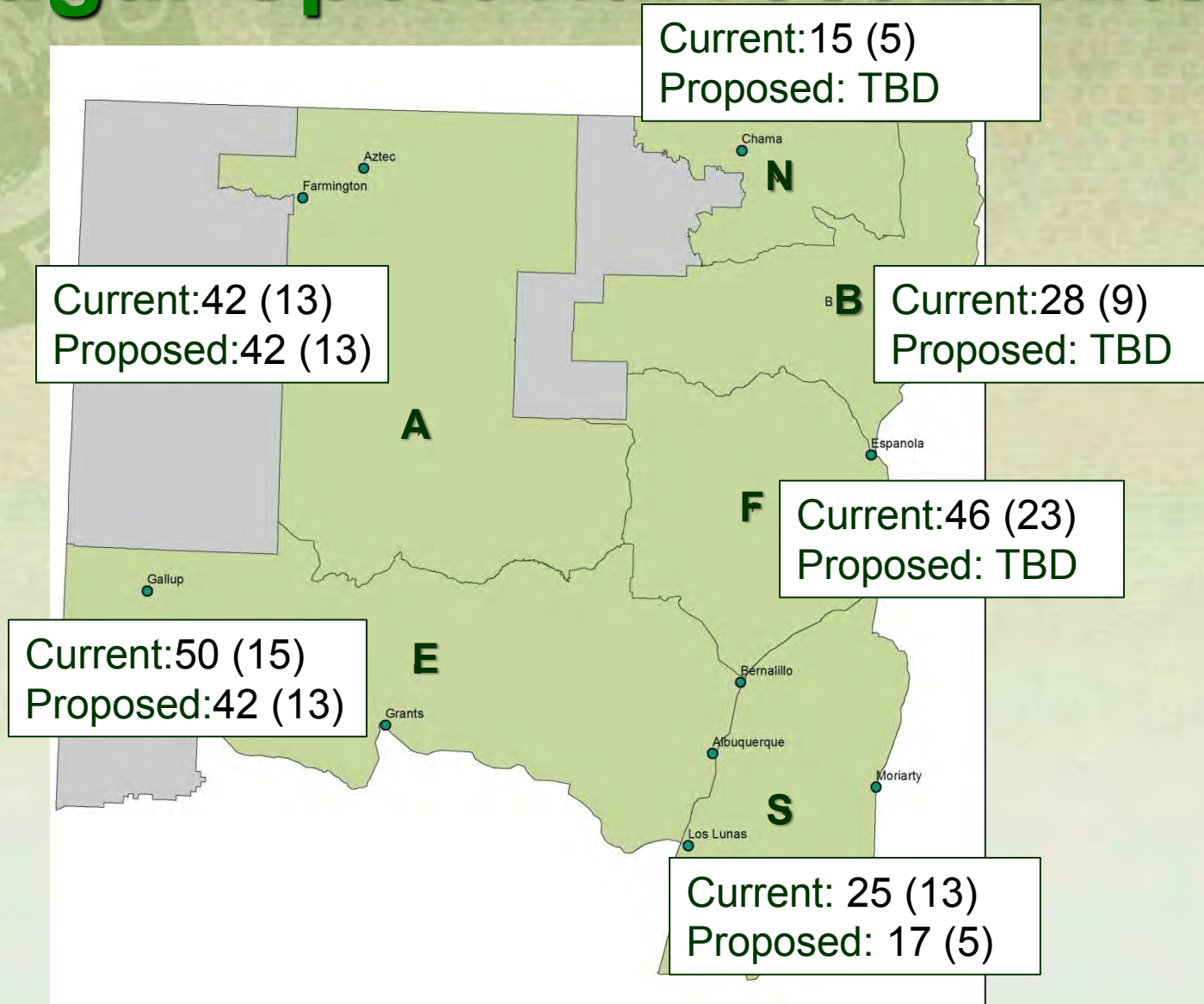


- Adjustments to harvest limits for zones based on findings from recent NMDGF research and new findings in the literature

Cougar Sport Harvest Limits



Cougar Sport Harvest Limits



Cougar Sport Harvest Limits



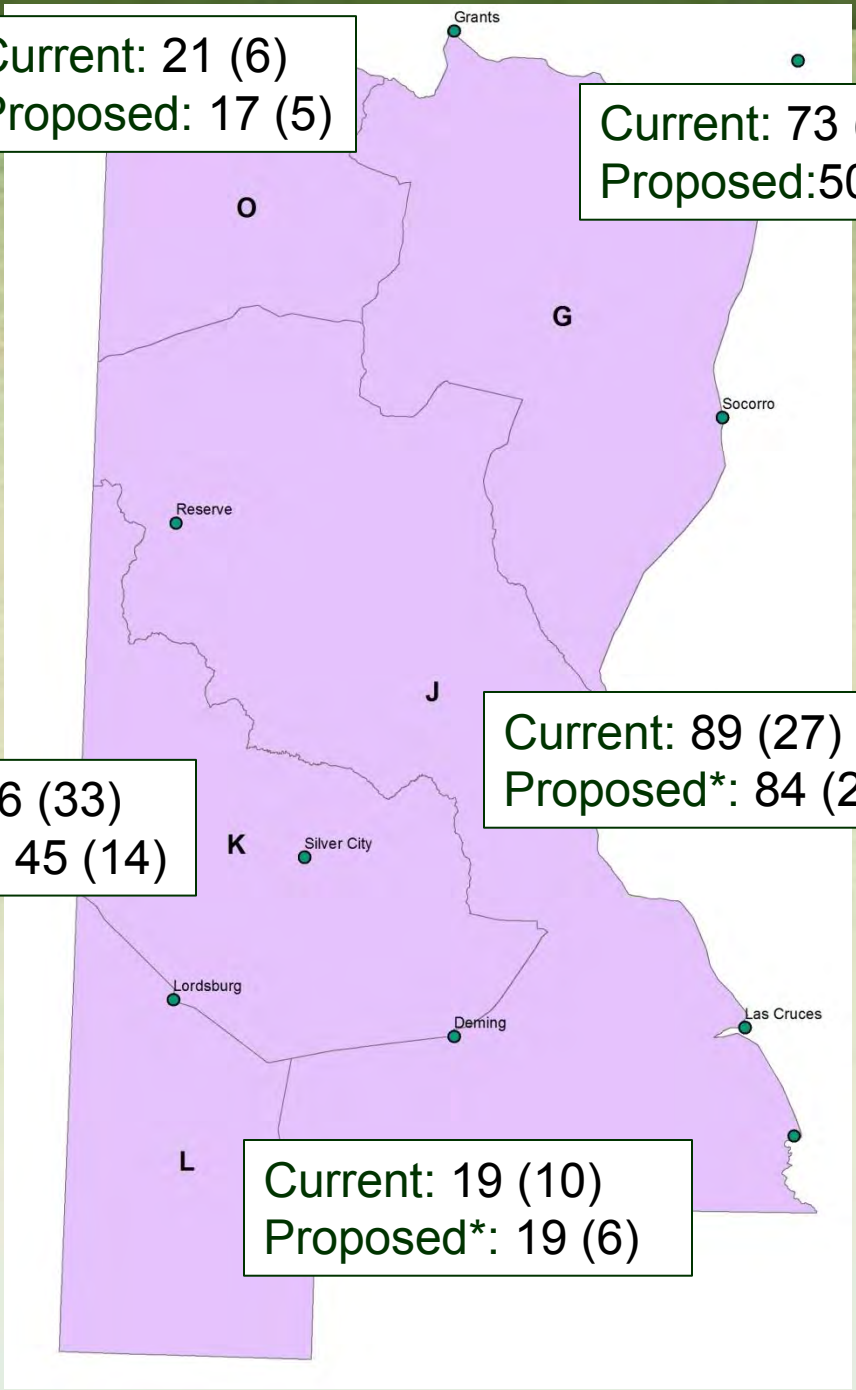
Current: 21 (6)
Proposed: 17 (5)

Current: 73 (37)
Proposed: 50 (15)

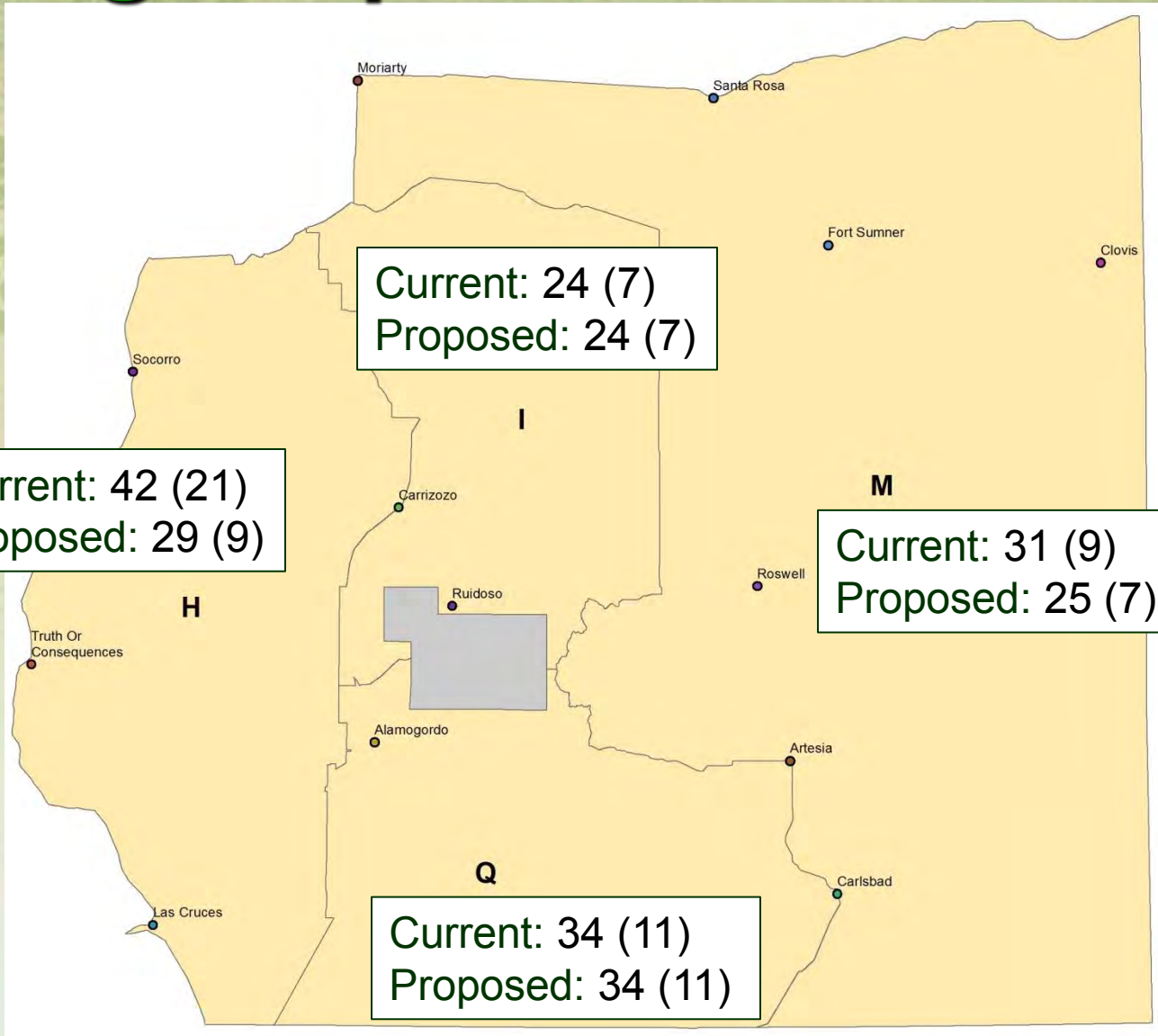
Current: 66 (33)
Proposed: 45 (14)

Current: 89 (27)
Proposed*: 84 (25)

Current: 19 (10)
Proposed*: 19 (6)



Cougar Sport Harvest Limits



Cougar: Proposal

Manner and Method Requirements and Restrictions 19.31.11.10 NMAC

- No longer allow traps and foot snares for sport harvest on private and state trust land
 - Infrequently used method of take
 - 2016 – 2017: 4 trapped (300)
 - 2017 – 2018: 20 trapped (292)
 - 2018 – 2019: 13 trapped(409)

QUESTIONS

