

**Building Design and Site Plan for  
the Albuquerque Office Complex  
Agenda Item #10**





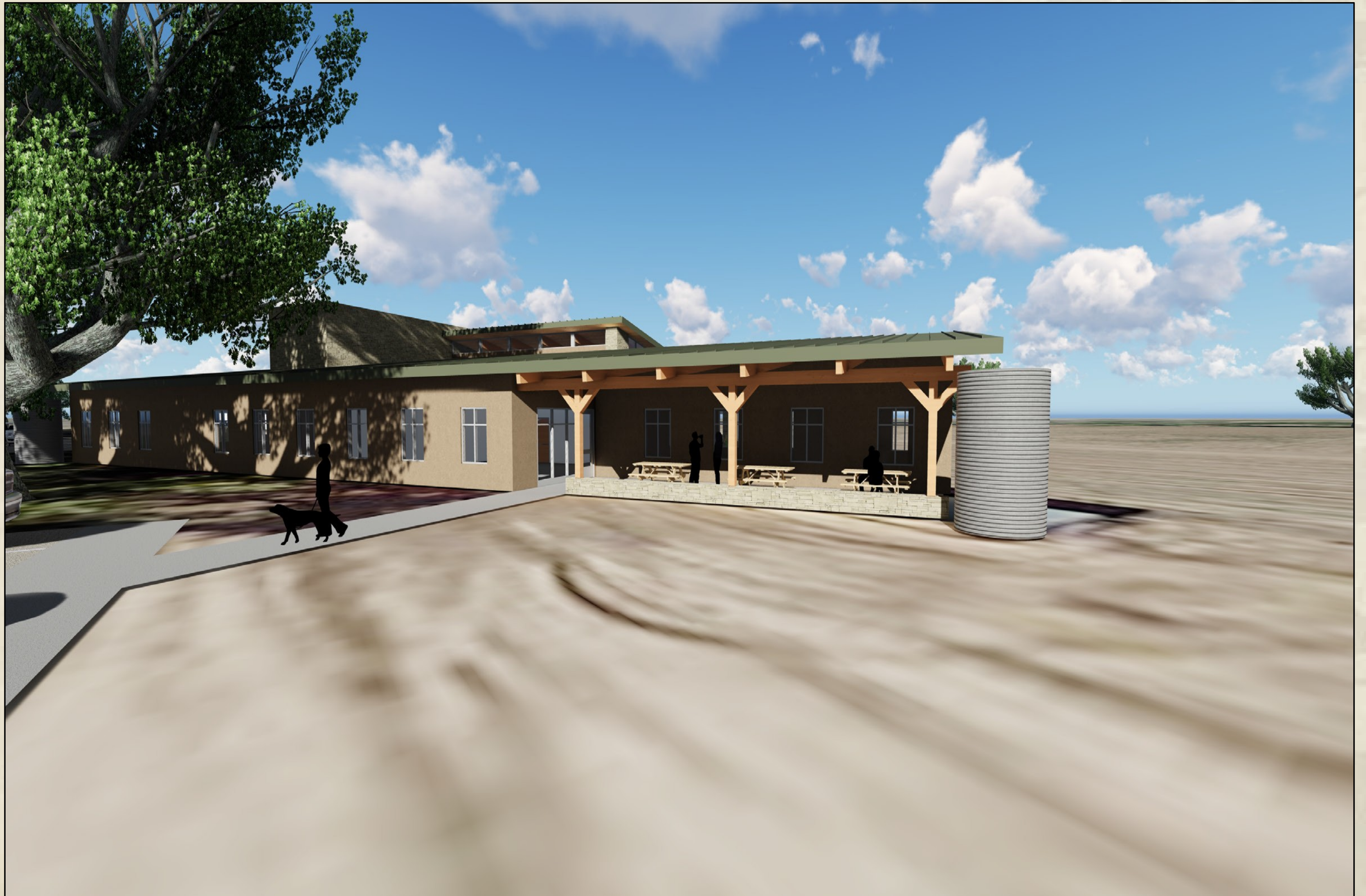
# Overhead view of site plan



# Front entrance view



# Rear entrance view



# Side view of office – East side



# Side view of office – West side



# Lobby entrance





# Lobby entrance



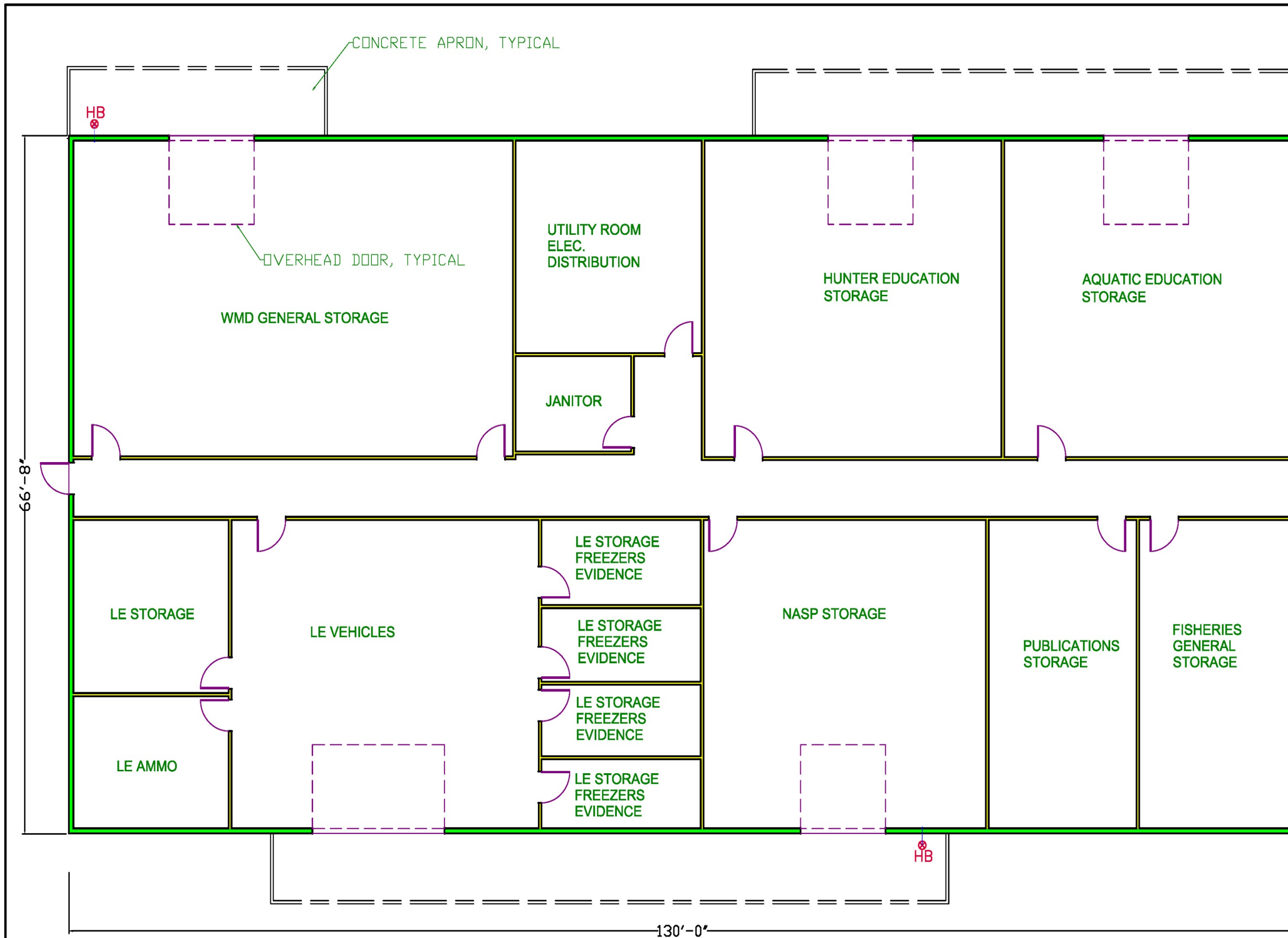
# View of the office from the street



# Discussion



# ABQ Warehouse Layout



## PRELIMINARY CODE SUMMARY

**PROJECT DATA**  
 PROJECT NAME: NMDGF ALBUQUERQUE WAREHOUSE BUILDING  
 PROJECT ADDRESS: TBD ALBUQUERQUE, NM  
 PROPOSED USE: GENERAL WAREHOUSE AND STORAGE  
 OWNER CONTACT:

**GOVERNING CODE**  
 BUILDING: 2012 International Building Code  
 MECHANICAL: 2012 International Mechanical Code  
 ELECTRICAL: 2012 National Electrical Code  
 PLUMBING: 2012 International Plumbing Code  
 FIRE: 2012 International Fire Code  
 LIFE SAFETY: 2012 NFPA 101  
 ACCESSIBILITY: 2010 ADA Stds for Accessible Design-DOJ  
 ENERGY: 2012 International Energy Conservation Code

**BUILDING CODE**  
 TOTAL GROSS SQUARE FOOTAGE: 8667 SQ FT  
 LARGEST FLOOR SF: 8667 SQ FT  
 OCCUPANCY CLASSIFICATION: S-1  
 MIXED USE (NO): NON-SEPARATED  
 CONSTRUCTION TYPE: V-B  
 AUTO. SPRINKLER SYSTEM: NOT REQUIRED

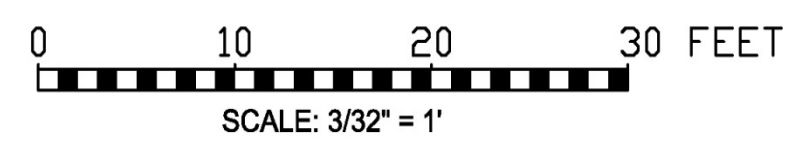
NUMBER OF FLOORS/STORIES: 1  
 HIGH RISE (YES/NO): NO  
 OVERALL PERIMETER: 393'  
 SMOKE CONTROL (YES/NO): NO  
 FIRE ALARM SYSTEM (YES/NO): YES

**CALCULATIONS**  
 SF ALLOWED PER FLOOR (BASE): 9000  
 SPRINKLERED INCREASE: N/A  
 FRONTAGE INCREASE: UNKNOWN  
 TOTAL SF/FLOOR ALLOWED: 9000  
 HEIGHT/STORY INCREASE (YES/NO): NO  
 MAXIMUM STORIES ALLOWED: 1

FIRE RESISTANCE RATING REQUIREMENTS		
BUILDING ELEMENT	RATING REQ'D	UL LISTING
STRUCTURAL FRAME	0	N/A
EXTERIOR BEARING WALLS	0	N/A
INTERIOR BEARING WALLS	0	N/A
EXTERIOR NON-BEARING WALLS	0	N/A
INTERIOR NON-BEARING WALLS	0	N/A
FLOOR CONSTRUCTION	0	N/A
ROOF CONSTRUCTION	0	N/A
VERTICAL SHAFTS	0	N/A
FIRE AREA SEPARATION WALLS	0	N/A

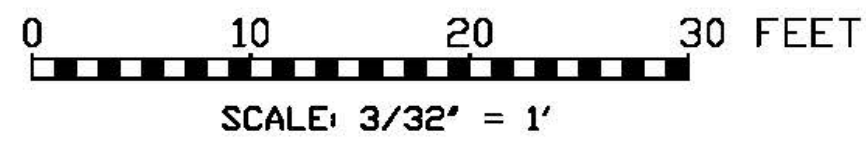
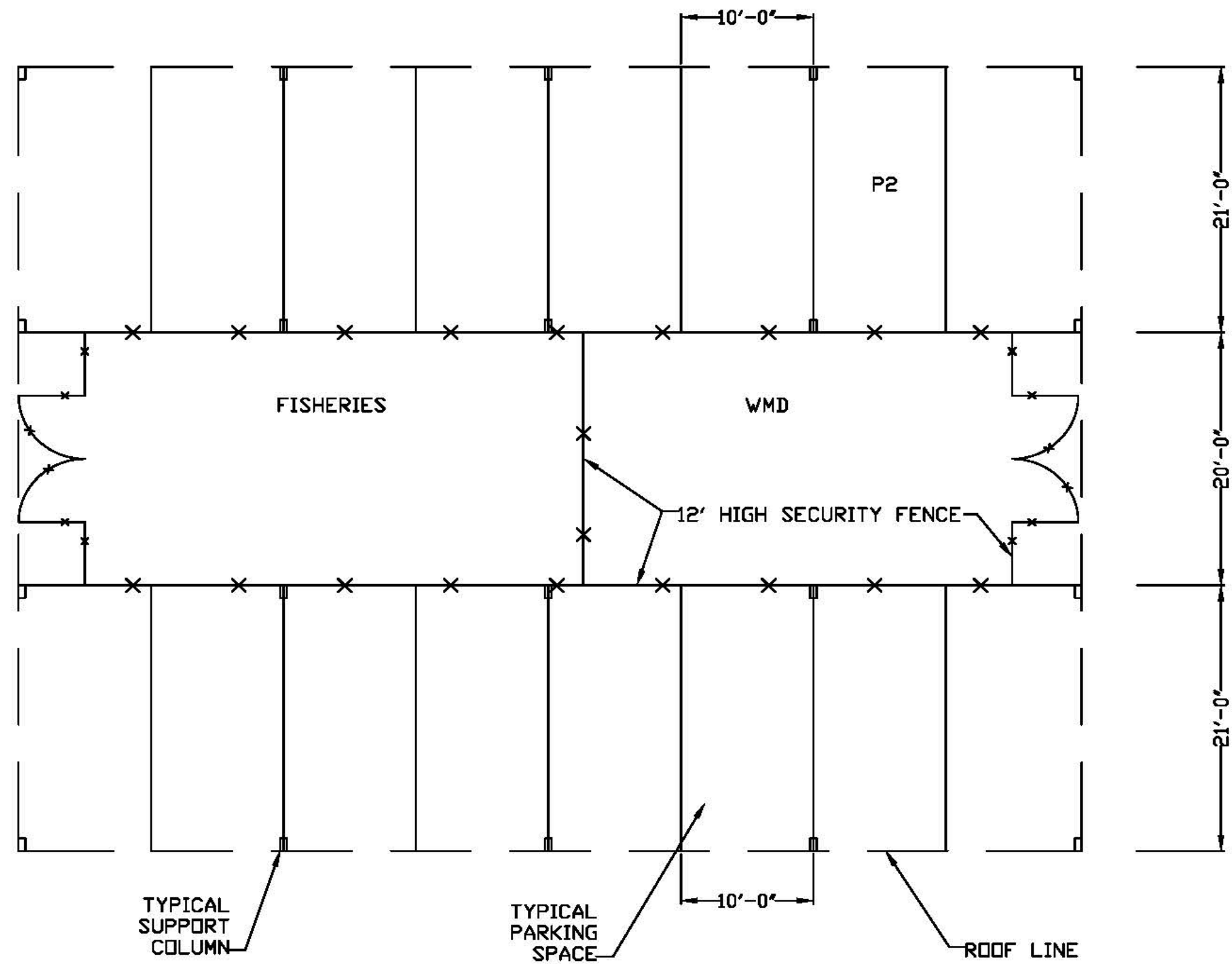
SMALL ARMS AMMUNITION TO BE PACKAGED IN ACCORDANCE WITH DOTn PACKAGING REQUIREMENTS.

FINAL DIMENSIONS TO BE DETERMINED DURING DESIGN



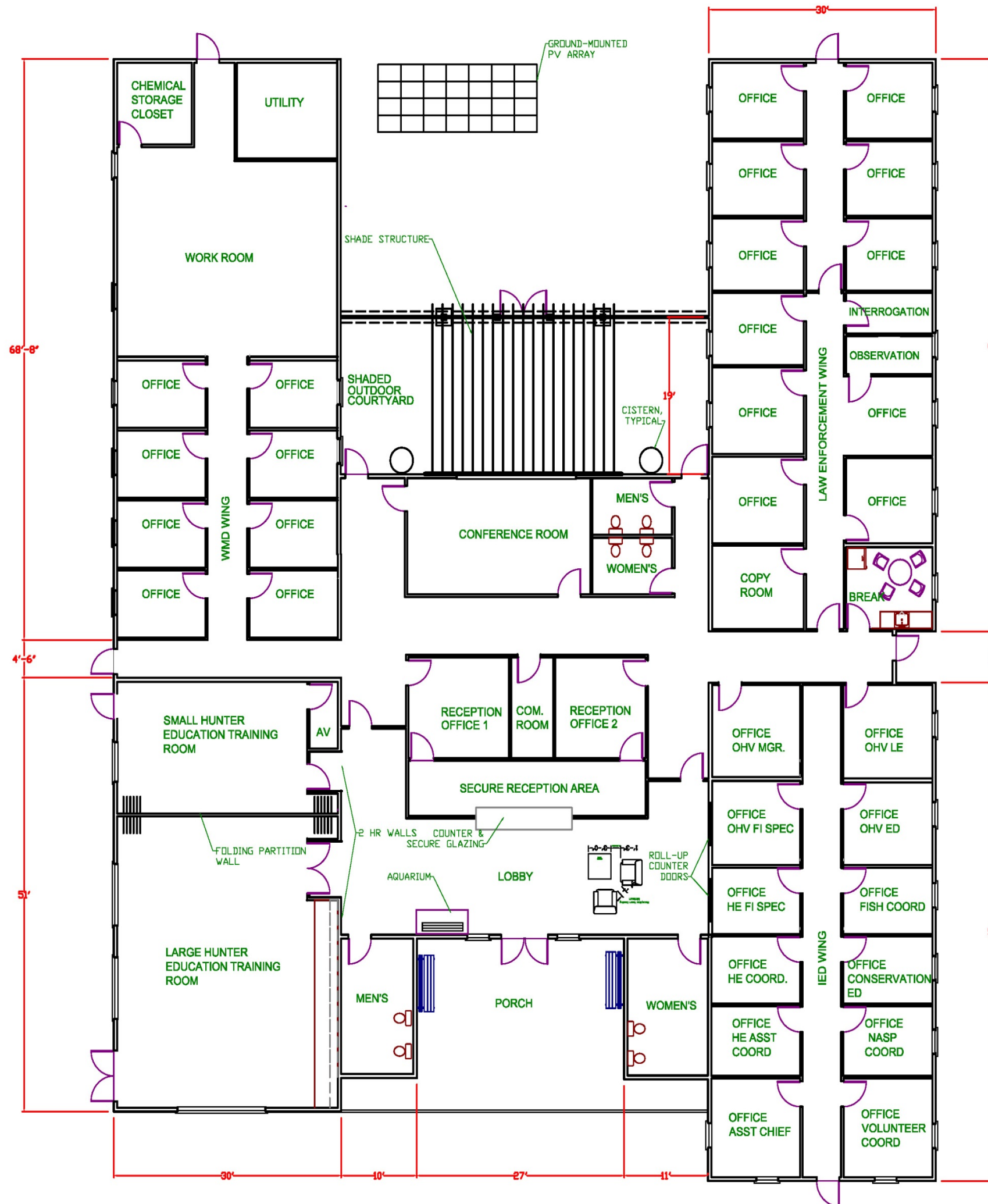
UNITED STATES DEPARTMENT OF THE INTERIOR		
U.S. FISH AND WILDLIFE SERVICE		
DIVISION OF ENGINEERING		
NEW MEXICO DEPARTMENT OF GAME & FISH		
ALBUQUERQUE		NEW MEXICO
ALBUQUERQUE OFFICE COMPLEX		
WAREHOUSE-STORAGE BUILDING		
FLOOR PLAN		
DESIGN: BENJAMIN/JOHNS	DRAWN: JOHNS	
DRAWING FILENAME AND NUMBER	DATE: 6/10/16	CHECK: BENJAMIN
DWGNO	SHT. NO. 2	SEQ. NO. 2 OF 3

# Covered storage layout



 	
UNITED STATES DEPARTMENT OF THE INTERIOR <b>U.S. FISH AND WILDLIFE SERVICE</b> DIVISION OF ENGINEERING NEW MEXICO DEPARTMENT OF GAME & FISH ALBUQUERQUE NEW MEXICO	
<b>ALBUQUERQUE OFFICE COMPLEX</b> <b>COVERED STORAGE &amp; PARKING</b> <b>FLOOR PLAN</b>	
DESIGN: BENJAMIN JOHN	CHECK: BENJAMIN
DRAWING FILENAME AND NUMBER	DATE: 12/3/15
DWGNO	SHT. NO. 3 SEQ. NO. 3 OF 3

# Original ABQ Office Layout



## PRELIMINARY CODE SUMMARY

**PROJECT DATA**  
 PROJECT NAME: NMDGF ALBUQUERQUE OFFICE BUILDING  
 PROJECT ADDRESS: TBD ALBUQUERQUE, NM  
 PROPOSED USE: ADMINISTRATION BUILDING AND TRAINING CENTER  
 OWNER CONTACT: \_\_\_\_\_

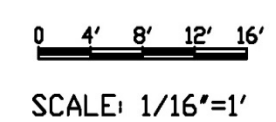
**GOVERNING CODE**  
 BUILDING: 2012 International Building Code  
 MECHANICAL: 2012 International Mechanical Code  
 ELECTRICAL: 2012 National Electrical Code  
 PLUMBING: 2012 International Plumbing Code  
 FIRE: 2012 International Fire Code  
 LIFE SAFETY: 2012 NFPA 101  
 ACCESSIBILITY: 2010 ADA Standards for Accessible Design - DOJ  
 ENERGY: 2012 International Energy Conservation Code

**BUILDING CODE**  
 TOTAL GROSS SQUARE FOOTAGE: 10,763 SQ FT  
 LARGEST FLOOR SF: 10,763 SQ FT  
 OCCUPANCY CLASSIFICATION: B AND A-3  
 MIXED USE (YES): NON-SEPARATED W/FIRE AREA SEPARATION  
 CONSTRUCTION TYPE: V-B  
 AUTO. SPRINKLER SYSTEM: YES

NUMBER OF FLOORS/STORIES: 1  
 HIGH RISE (YES/NO): NO  
 OVERALL PERIMETER: 622'  
 SMOKE CONTROL (YES/NO): NO  
 FIRE ALARM SYSTEM (YES/NO): YES

**CALCULATIONS**  
 SF ALLOWED PER FLOOR (BASE): 6000  
 SPRINKLERED INCREASE: 300%  
 FRONTAGE INCREASE: UNKNOWN  
 TOTAL SF/FLOOR ALLOWED: 18,000  
 HEIGHT/STORY INCREASE (YES/NO): NO  
 MAXIMUM STORIES ALLOWED: 1

BUILDING ELEMENT	RATING REQ'D (HR)	UL LISTING
STRUCTURAL FRAME	0	N/A
EXTERIOR BEARING WALLS	0	N/A
INTERIOR BEARING WALLS	0	N/A
EXTERIOR NON-BEARING WALLS	0	N/A
INTERIOR NON-BEARING WALLS	0	N/A
FLOOR CONSTRUCTION	0	N/A
ROOF CONSTRUCTION	0	N/A
VERTICAL SHAFTS	0	N/A
FIRE AREA SEPARATION WALLS	2	GA-WP 1841






UNITED STATES DEPARTMENT OF THE INTERIOR  
**U.S. FISH AND WILDLIFE SERVICE**  
 DIVISION OF ENGINEERING

NEW MEXICO DEPARTMENT OF GAME & FISH  
 ALBUQUERQUE NEW MEXICO

**ALBUQUERQUE OFFICE COMPLEX**  
 OFFICE BUILDING  
 FLOOR PLAN

DESIGN: BENJAMIN JOHNS	CHECK: BENJAMIN
DRAWING FILENAME AND NUMBER	DATE: 6/10/16
DWGNO	SHT. NO. 1
	SEQ. NO. 1 OF 3

# View of the office - North side



# Entrance and patio view





# Elevated view – East side



# Side view of the office – West Side

