



**UPDATE ON
DEVELOPMENT
OF SHOOTING
RANGES IN
NEW MEXICO**

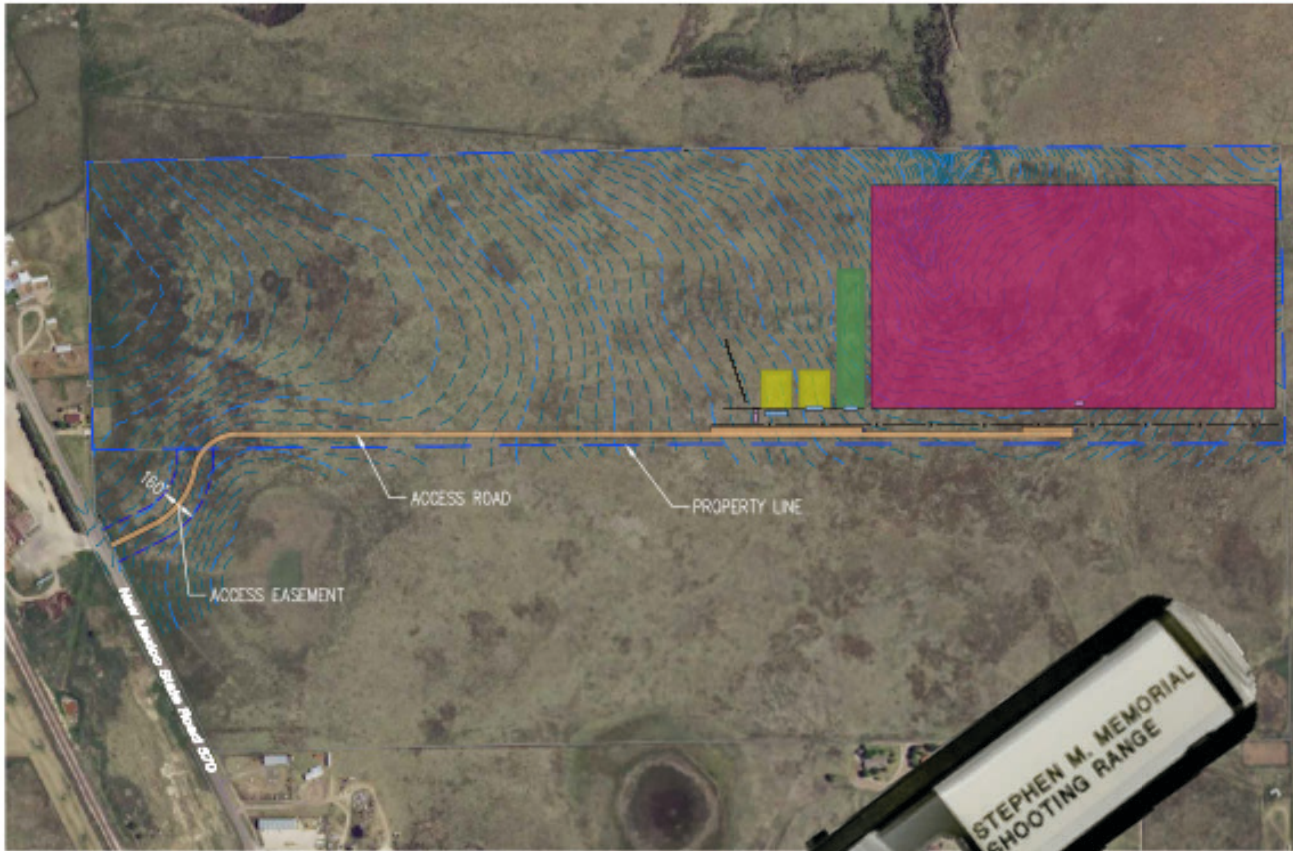
Information & Education Division



PRIVATE LAND



PRIVATE LAND



200 YD RIFLE RANGE - 10 POINTS

50 YD SMALL BORE RIFLE RANGE - 25 POINTS

50 YD PISTOL RANGE - 25 POSITIONS

AMERICAN TRAP SHOTGUN - 5 STAND FIELD

10-90 YD ARCHERY RANGE

SHADE STRUCTURE (TYP.)

PARKING AND ACCESS - 75 STALLS

CONTAINER AND STORAGE AREAS

LEGEND

- — — — — PROPERTY LINE
- x-x-x- FENCE LINE

NEW MEXICO GAME & FISH
STEPHEN M. BUSH SHOOTING RANGE
CLAYTON, NEW MEXICO

OVERALL CONCEPTUAL RANGE PLAN

DATE: December 2017

CONTOUR INTERVAL = 1'

SHEET 1 OF 2

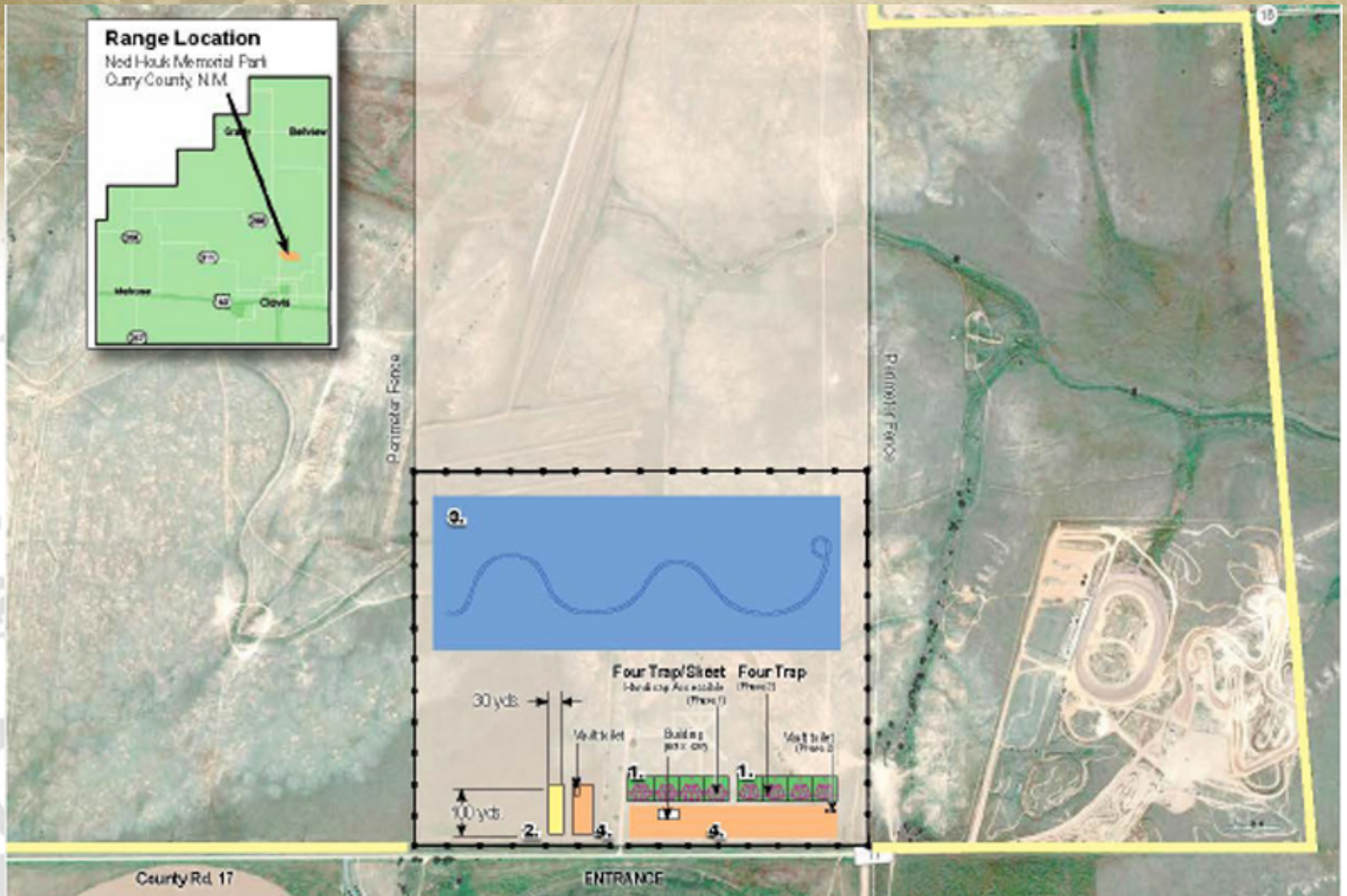
Bohannon & Huston
www.bhinc.com 888.677.6332

COMMUNITY PARTNERSHIP



&

COMMUNITY PARTNERSHIP



RANGE ENHANCEMENTS

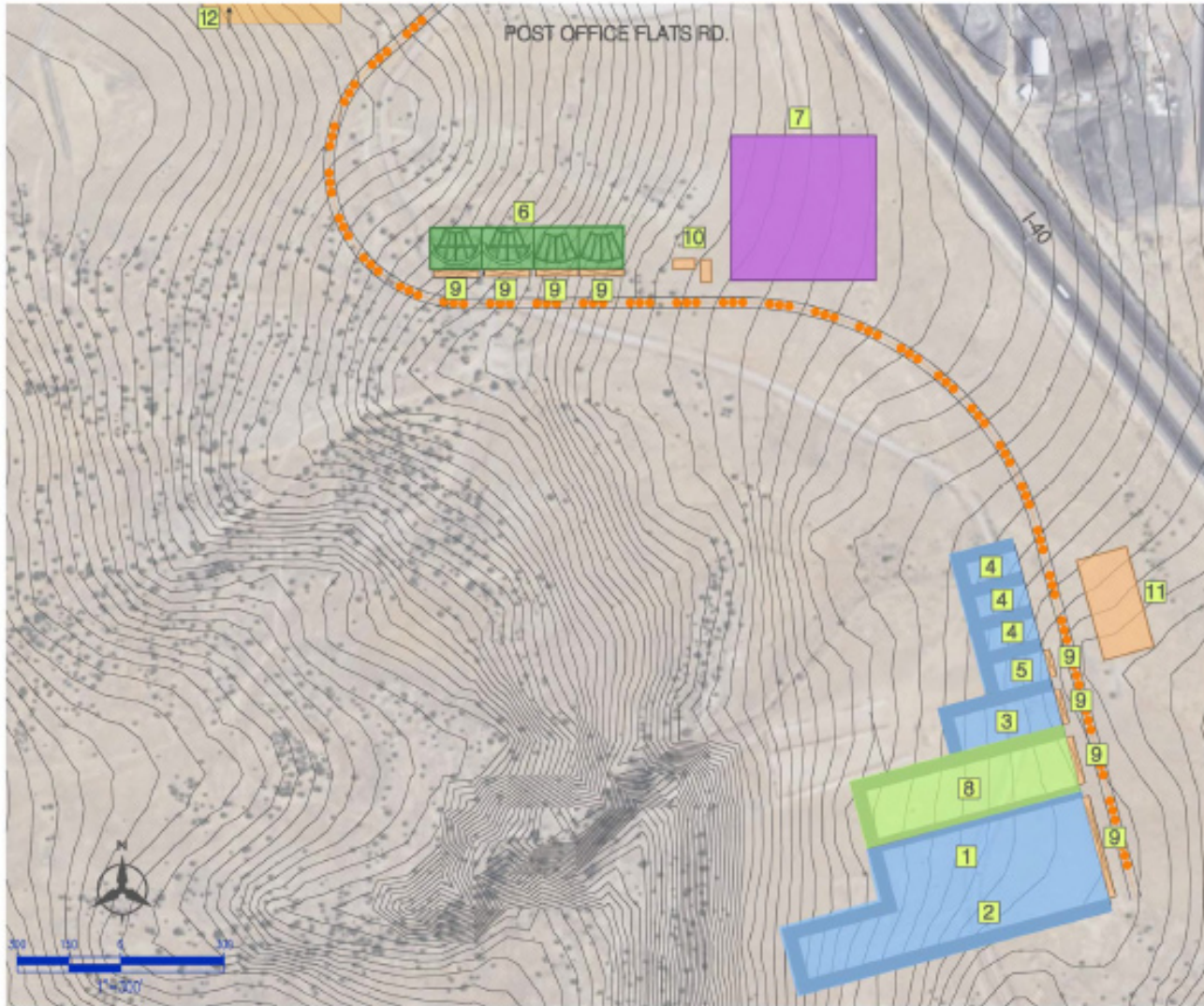


RANGE ENHANCEMENTS



&

THIRD PARTY RANGES



RIFLE & PISTOL

- 1** RIFLE RANGE
200 YD - 20 POINTS
- 2** RIFLE RANGE
300 YD - 20 POINTS, 200 YD - 20 POINTS
- 3** SMALLBORE
100 YD - 20 POINTS
- 4** PISTOL / ACTION
50 YD - 20 POINTS
- 5** PISTOL
50 YD - 20 POINTS

SHOTGUN

- 3** SKEET / TRAP
2 COMBINATION FIELDS, 2 TRAP FIELDS

ARCHERY

- 7** ARCHERY

MUZZLE LOADER

- 8** MUZZLE LOADER
200 YD - 20 POINTS

GENERAL

- 9** SHADE STRUCTURE
- 10** FUTURE CLASSROOMS
HUNTER EDUCATION
- 11** FUTURE MULTI PURPOSE BUILDING
- 12** OHV PARKING & TRAINING AREA

LEGEND

- RE-ALIGNED PROPOSED ACCESS ROAD

NEW MEXICO GAME & FISH
CIBOLA COUNTY SHOOTING RANGE
CONCEPTUAL RANGE PLAN

DATE: 12/16/15

12/16/15
 12/16/15
 12/16/15



Information & Education Division

