

Engaging
Marginalized Youth in
Hunting & Angling in
Partnership with NMDGF



OUR PARTNERS



What is Nature Ninos?



The background is a solid teal color. In the top-left and bottom-right corners, there are large, wavy yellow shapes. A dashed white line traces a path through these yellow shapes. In the top-right and bottom-left corners, there are dark teal shapes containing stylized leaf illustrations: one is a solid green leaf, and the other is a white outline of a leafy branch.

Who do we serve?

What does Marginalized mean?

Definition

adjective

(of a person, group, or concept) treated as insignificant or peripheral.

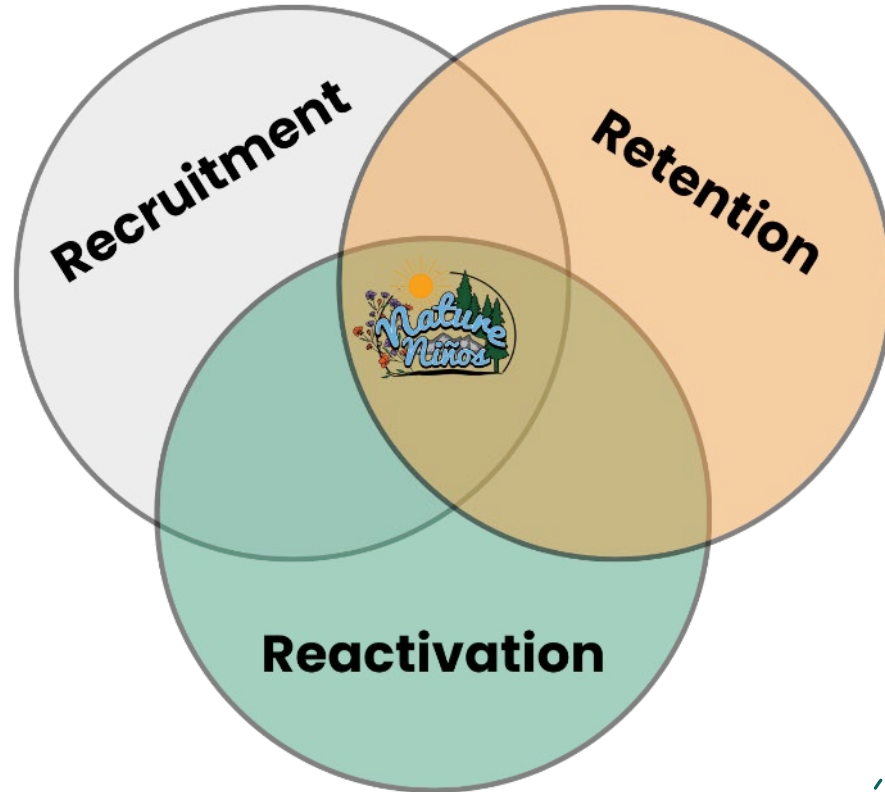
Source: Oxford Languages

What does this mean to NN communities?

- Communities who have not historically been invited to participate in activities such as hunting, fishing & archery
- Local, and varies for each community we work with.
- Recognize the need to continuously reevaluate our communities and their needs.

What does marginalized mean in your community?

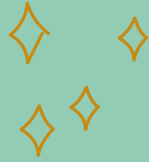
Making A Difference with R3





NMDGF Involvement

Since the conception of Nature Ninos New Mexico NMDGF has been an intrical part of building our programming and serving the community.



Research & Findings



IDENTIFIED BARRIERS



COST



ADULT MENTORS



TRANSPORTATION



COMMUNITY
PERCEPTION

Barriers differ in every community and programs are built with community driven input, collaborative meetings, listening sessions and intentionality in addressing specific topics for each group.

POTENTIAL SOLUTIONS



ACCESS



PARTNERSHIPS



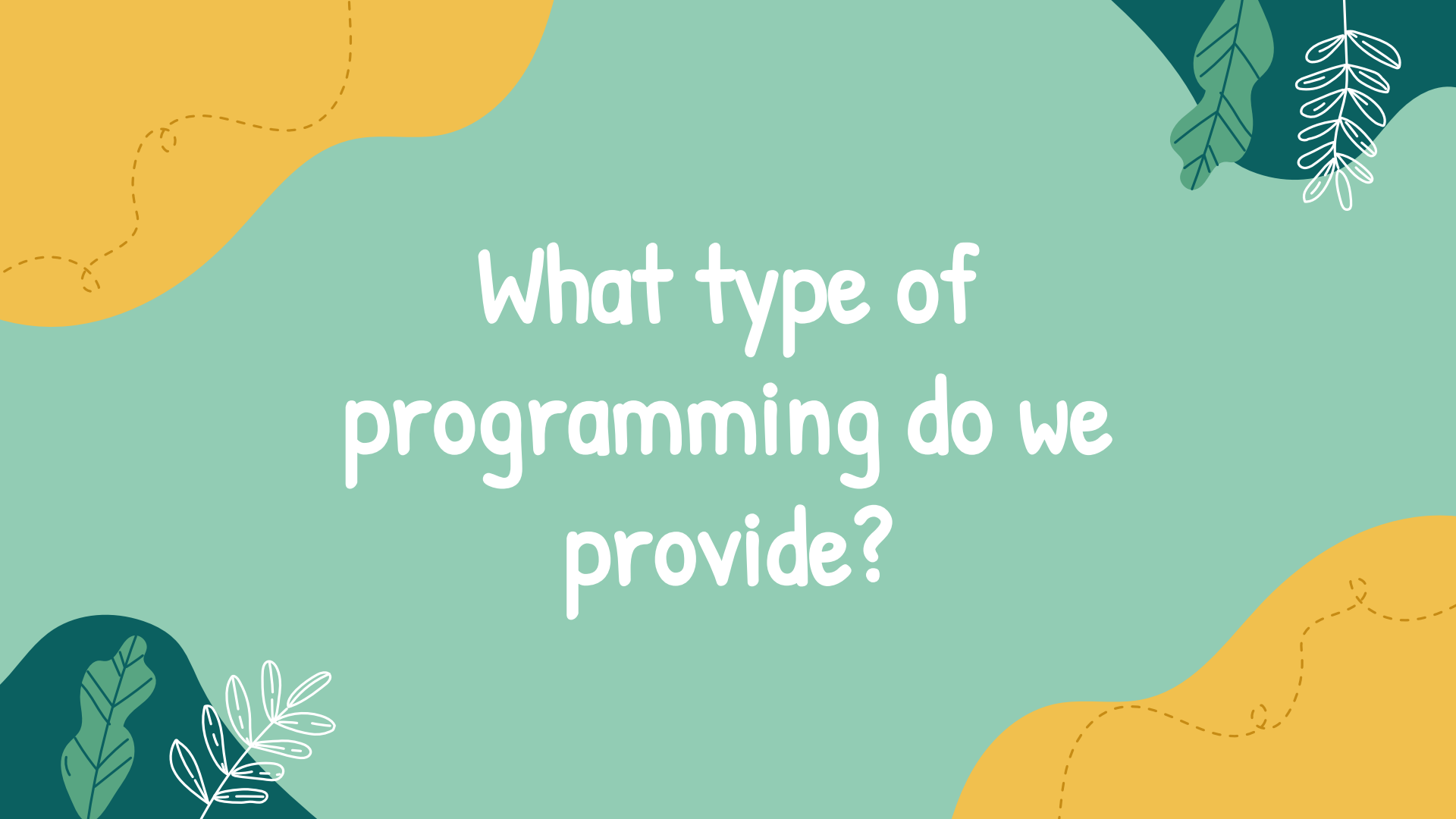
MARKETING



COMMUNICATE
SAFETY



DELIVER
QUALITY



What type of
programming do we
provide?

Various Access Points to the Outdoors

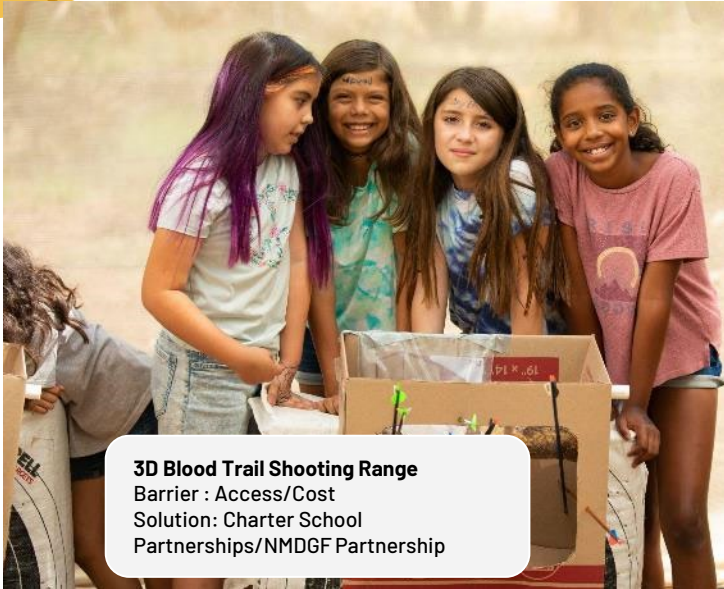
- Fishing with field-to-table lunch opportunities
- Basic & 3D Archery with blood trail tracking
- Intro to Bird Dogs & Quail Hunting
- Wilderness First Aid with Survival Techniques
- Nature Photography and Nature Journaling
- Water & Land Conservation activities
- Public Lands Hikes (Plant & Animal Identification)
- Project Wild Curriculum

And the most important thing: conservation mentors, including NMDGF staff, from all backgrounds and communities are able to come and interact with the youth and families we serve!





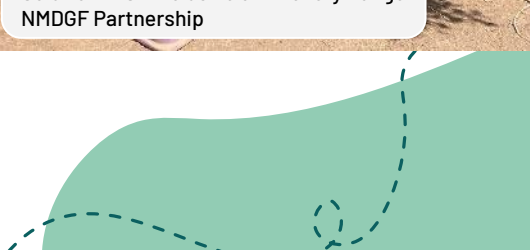
Trout Fishing & Processing
Barrier : Community Perception
Solution: Conservation Mentors
NMDGF Partnership



3D Blood Trail Shooting Range
Barrier : Access/Cost
Solution: Charter School
Partnerships/NMDGF Partnership



Inclusive Archery Range
Barrier : Access
Solution: ASL Inclusive 3D Archery Range
NMDGF Partnership





Public Lands Nature Hike
Barrier : Transportation (Access)
Solution: Non Traditional Partners
NMDGF Partnership



Scoring Lesson
Barrier : Adult Mentors
Solution: NMDGF Partnership



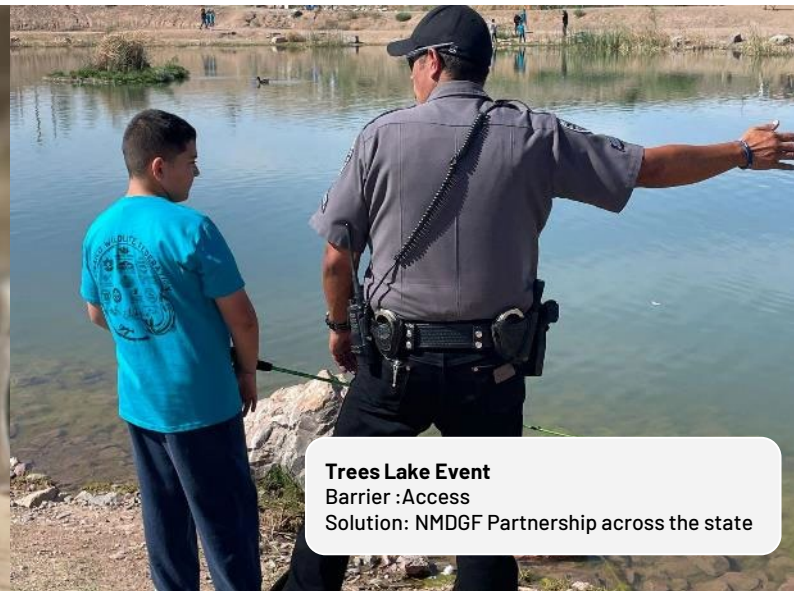
Wildlife Exposure & Lessons
Barrier : Community Perception
Solution: NMDGF Partnership



Pellet Gun Shooting
Barrier : Community Perception
Solution: NMDGF Partnership



Basic Archery Range
Barrier : Community Perception
Solution: NASP & NMDGF Partnership

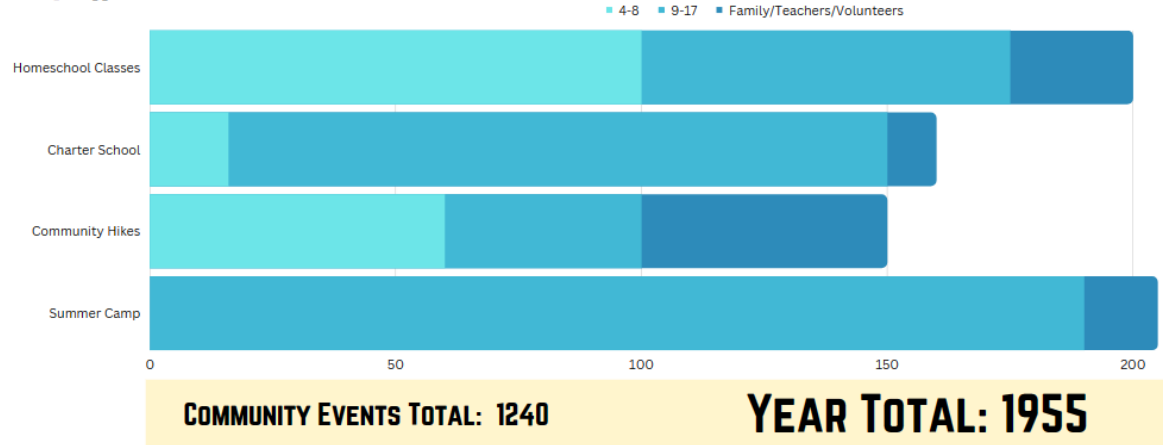


Trees Lake Event
Barrier : Access
Solution: NMDGF Partnership across the state

End of the Year Impact



EVENT PARTICIPATION

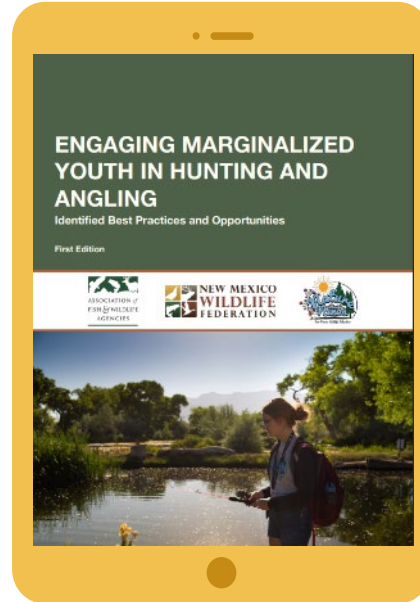
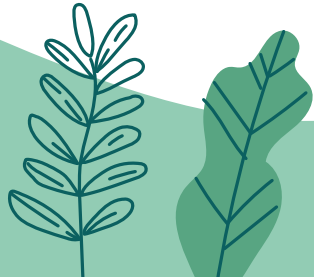


WANT TO LEARN MORE?



Review our report & How-to-Guide

www.natureninios.org





THANK YOU
NMDGF for all
your Support!!

sarah@natureinos.org

