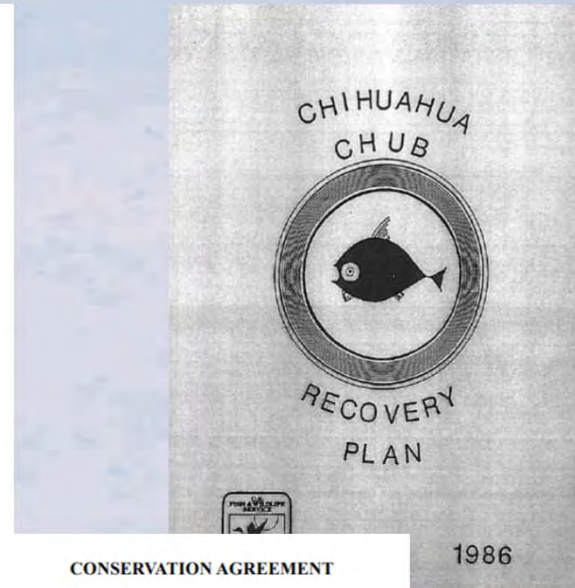
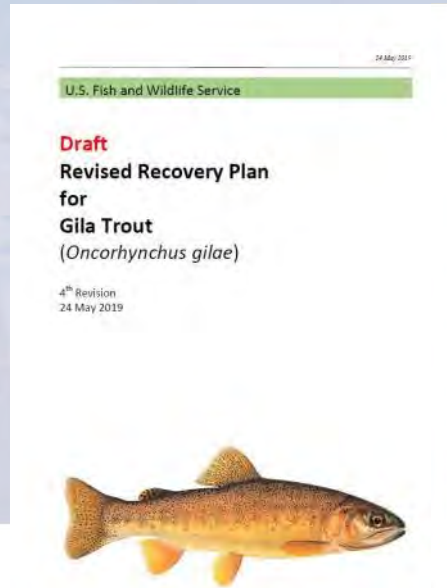


# Update on Native Fish Program Activities



# Management Guidance

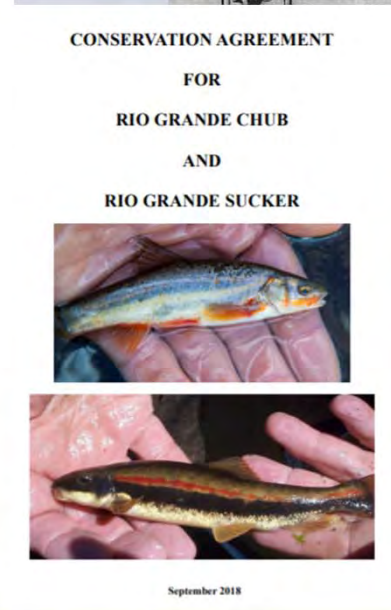


**Rio Grande Cutthroat Trout (*Oncorhynchus clarkii virginalis*) Conservation Strategy**



Photo courtesy of New Mexico Department of Game and Fish

October 2013



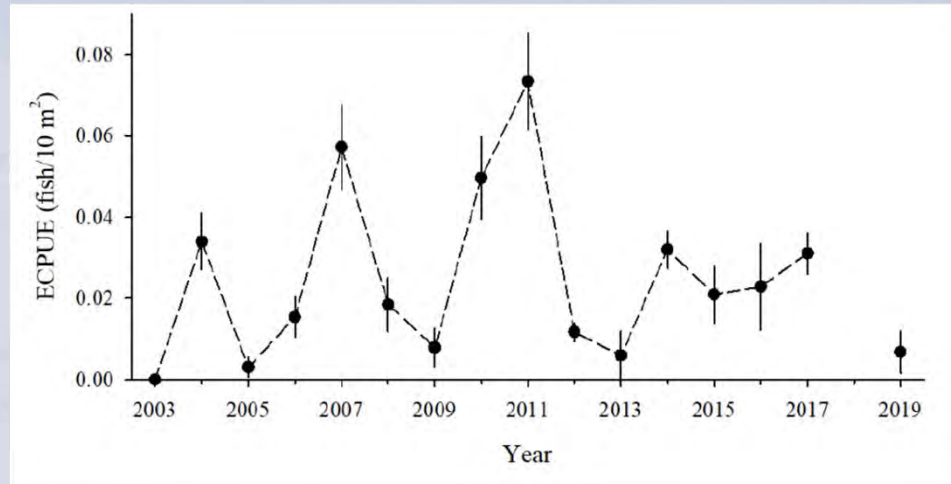
# Project Locations



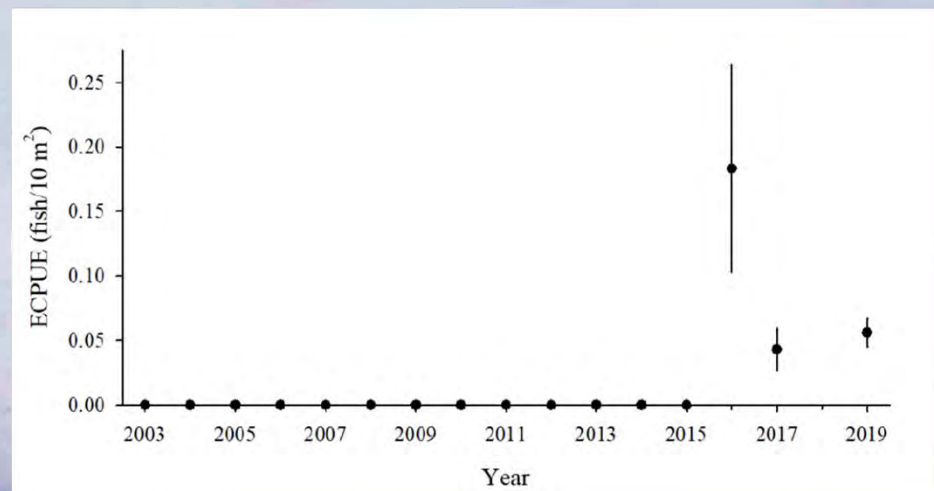
# San Juan River Recovery



## Age-1 Colorado Pikeminnow



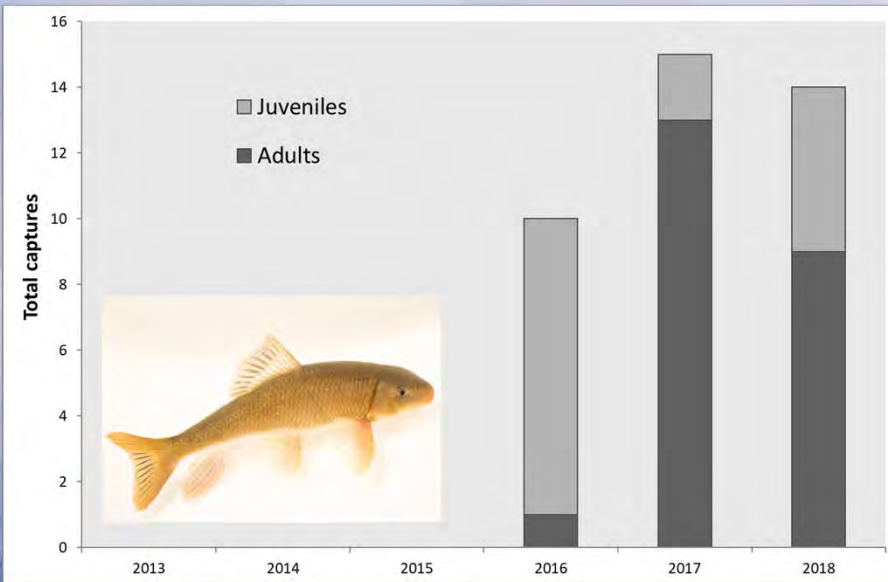
## Age-0 Colorado Pikeminnow



# Lower Pecos Projects Texas Hornshell and Host Fish



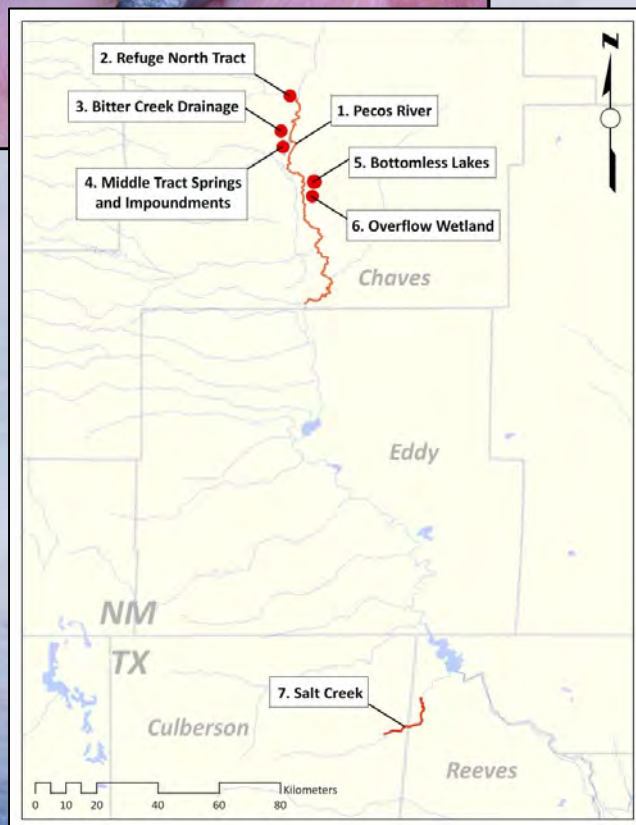
# Delaware River Restoration



# Pecos Pupfish Conservation



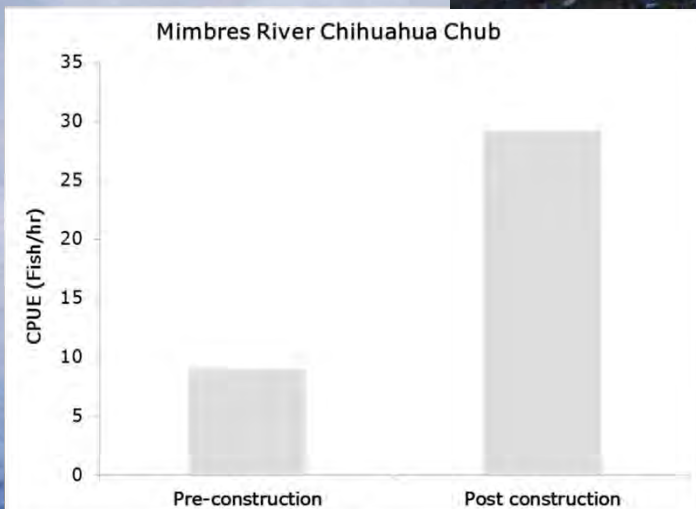
- Installed fish barriers to prevent Sheephead Minnow invasion
- Protects 30% of remaining core habitat



# Chihuahua Chub Habitat

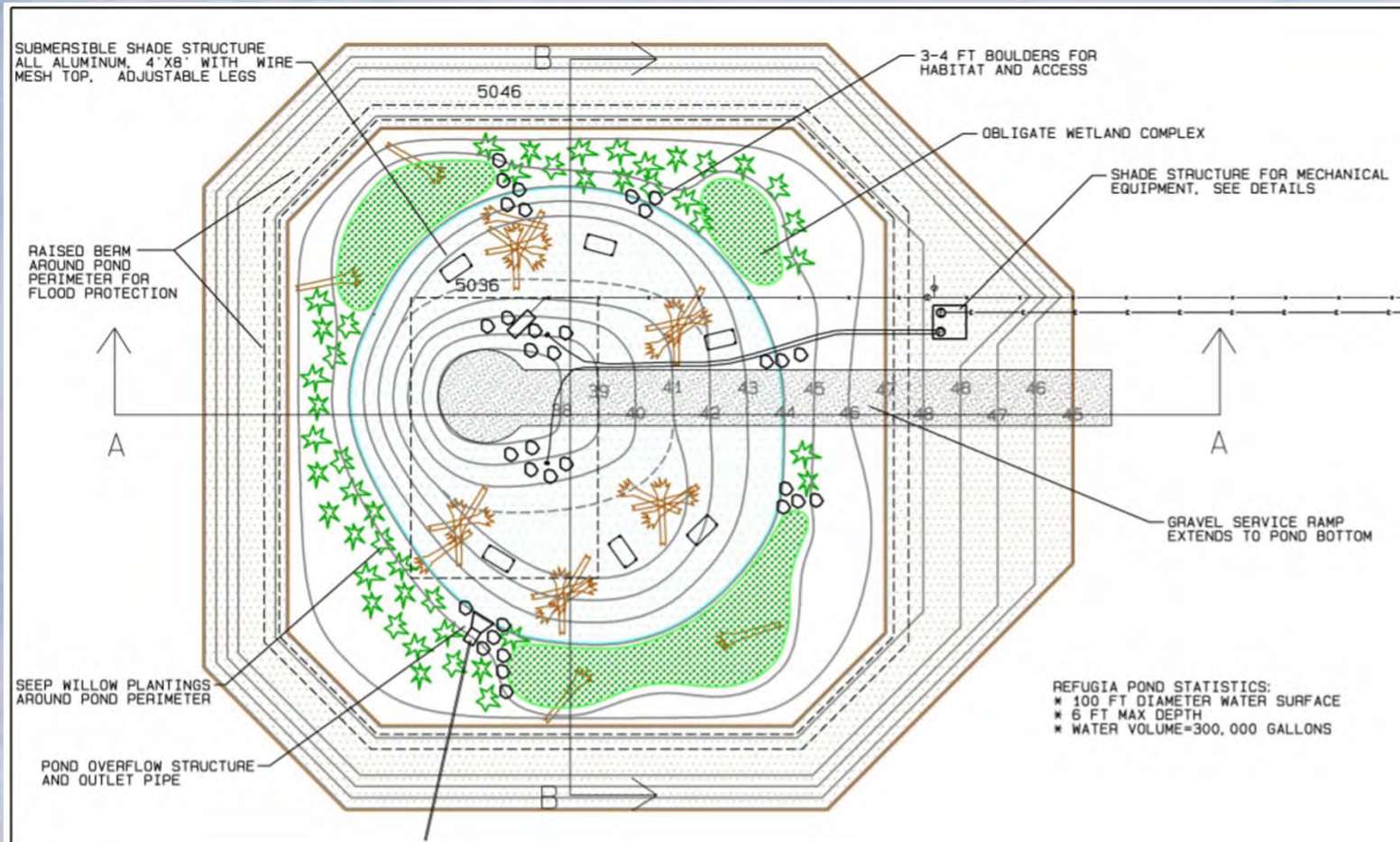


- Improved habitat quality – TNC and NMGF
- Long movement patterns
- Need refuge habitat





# Chihuahua Chub Habitat



River Ranch Refugia Pond Plans

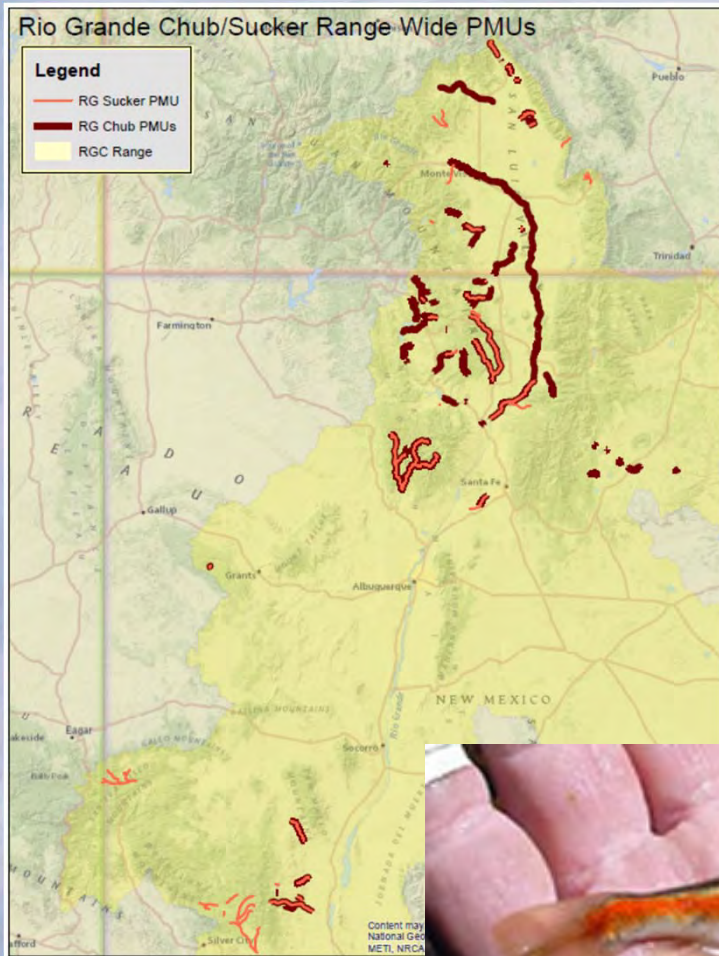
# Rio Grande Cutthroat Trout Restoration



- Rio Costilla Project
  - 90 mi., 15 lakes, Costilla Reservoir
  - Implement final phase – Fall 2020
  - Removing temp. fish barriers
- Las Animas
  - Silver Fire - 2013
  - Evidence of reproduction – Summer 2020
- Rio Frijoles
  - Evidence of reproduction – Fall 2019
- Pecos Watershed
  - Next priority watershed

Increased RGCT distribution by 20.8%  
- 2006 to present

# Rio Grande Chub and Sucker Conservation



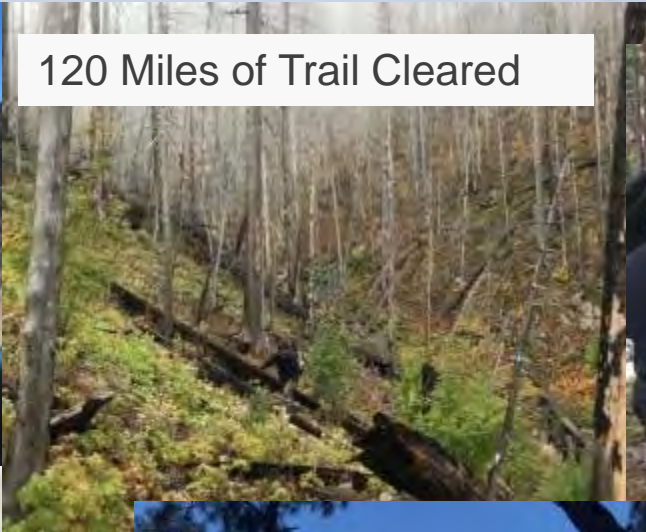
- Both petitioned for listing under ESA
- Awaiting formal 12 Month Review by USFWS
- Conservation Team, Agreement and Strategy Development
- Incorporating both species into RGCT restoration and planning
- Conducting genetic evaluations to guide repatriation decisions



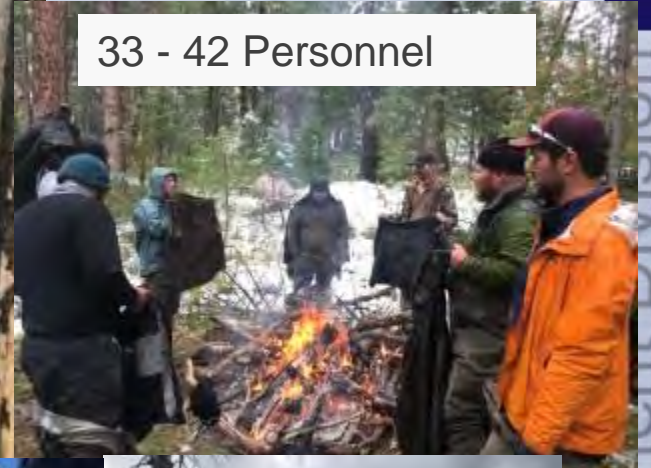
# Gila Trout Restoration - Whitewater Creek



120 Miles of Trail Cleared



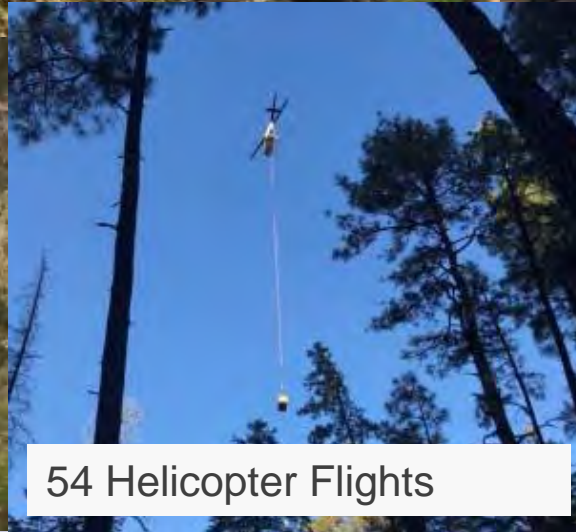
33 - 42 Personnel



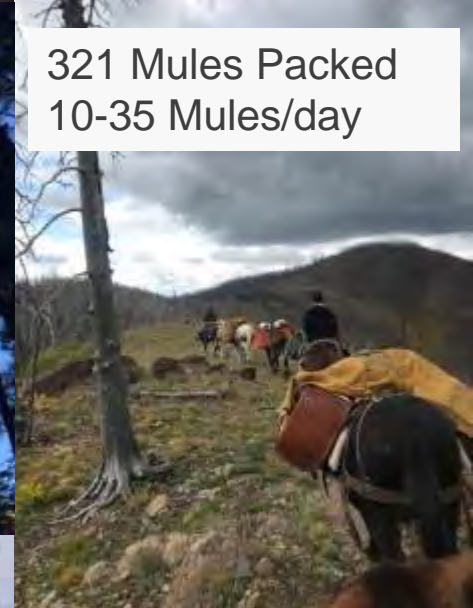
>200 eDNA samples



54 Helicopter Flights

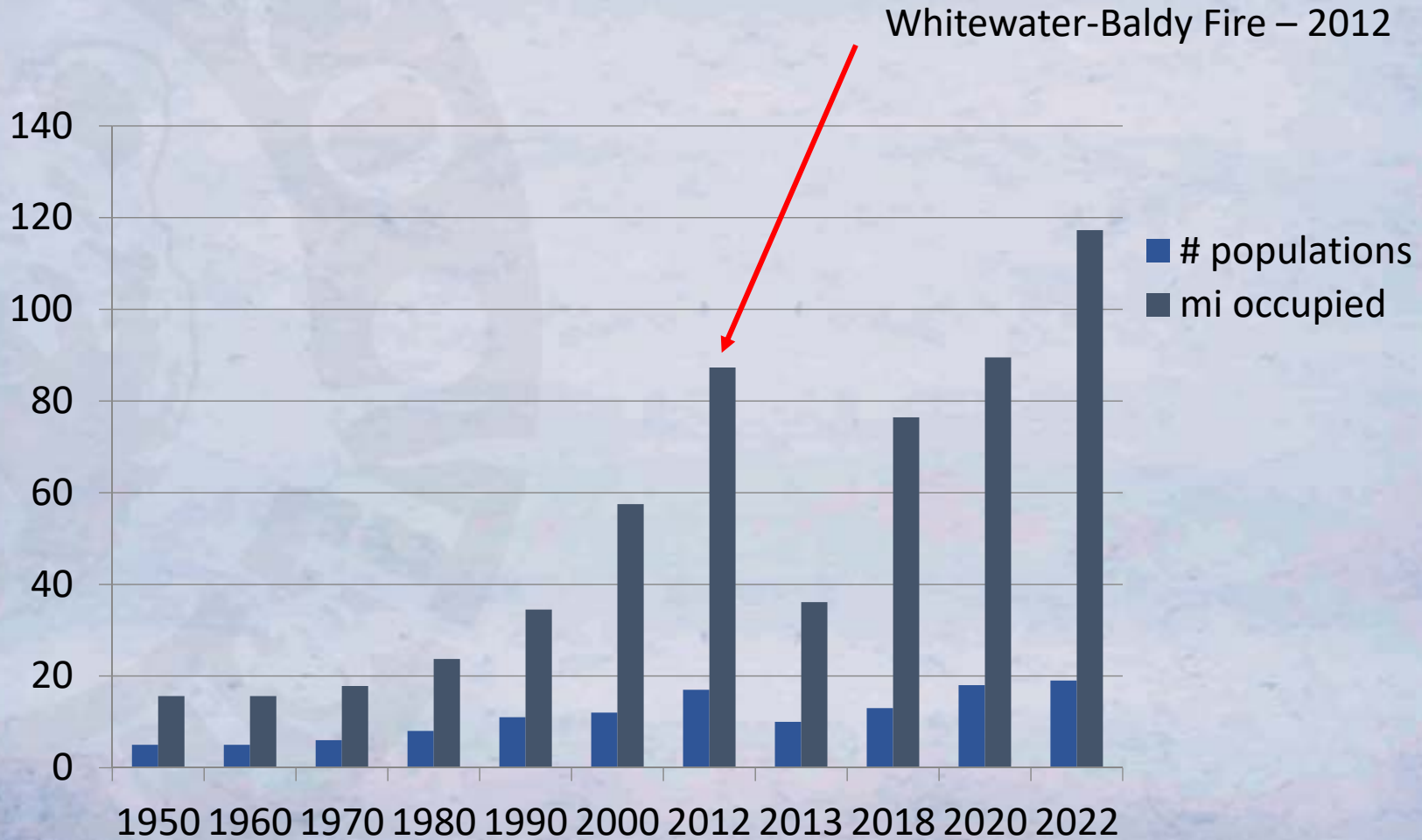


321 Mules Packed  
10-35 Mules/day



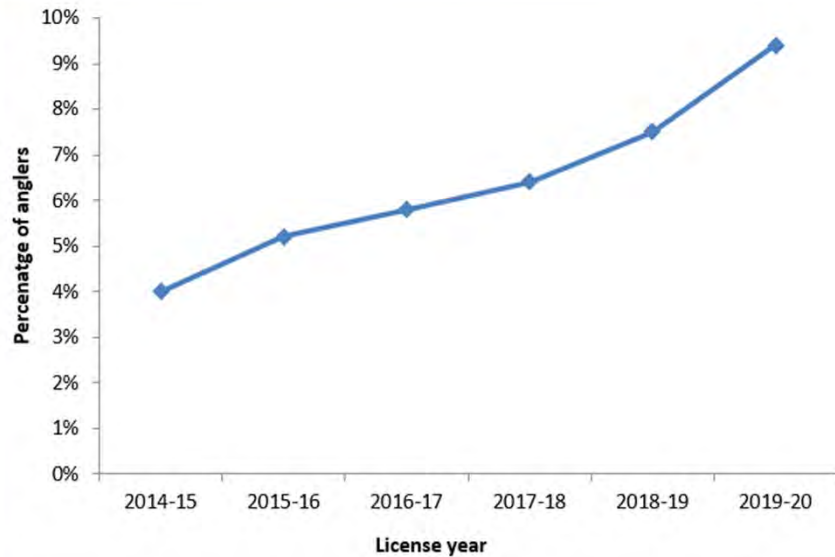
Increases GT distribution by 28 miles

# Gila Trout Status



# Gila Trout Angling

## Angler Preference for Gila Trout



## Anglers Seeking Gila Trout



# Questions



