

# ELK

## 19.31.14 NMAC

**October 14, 2022**

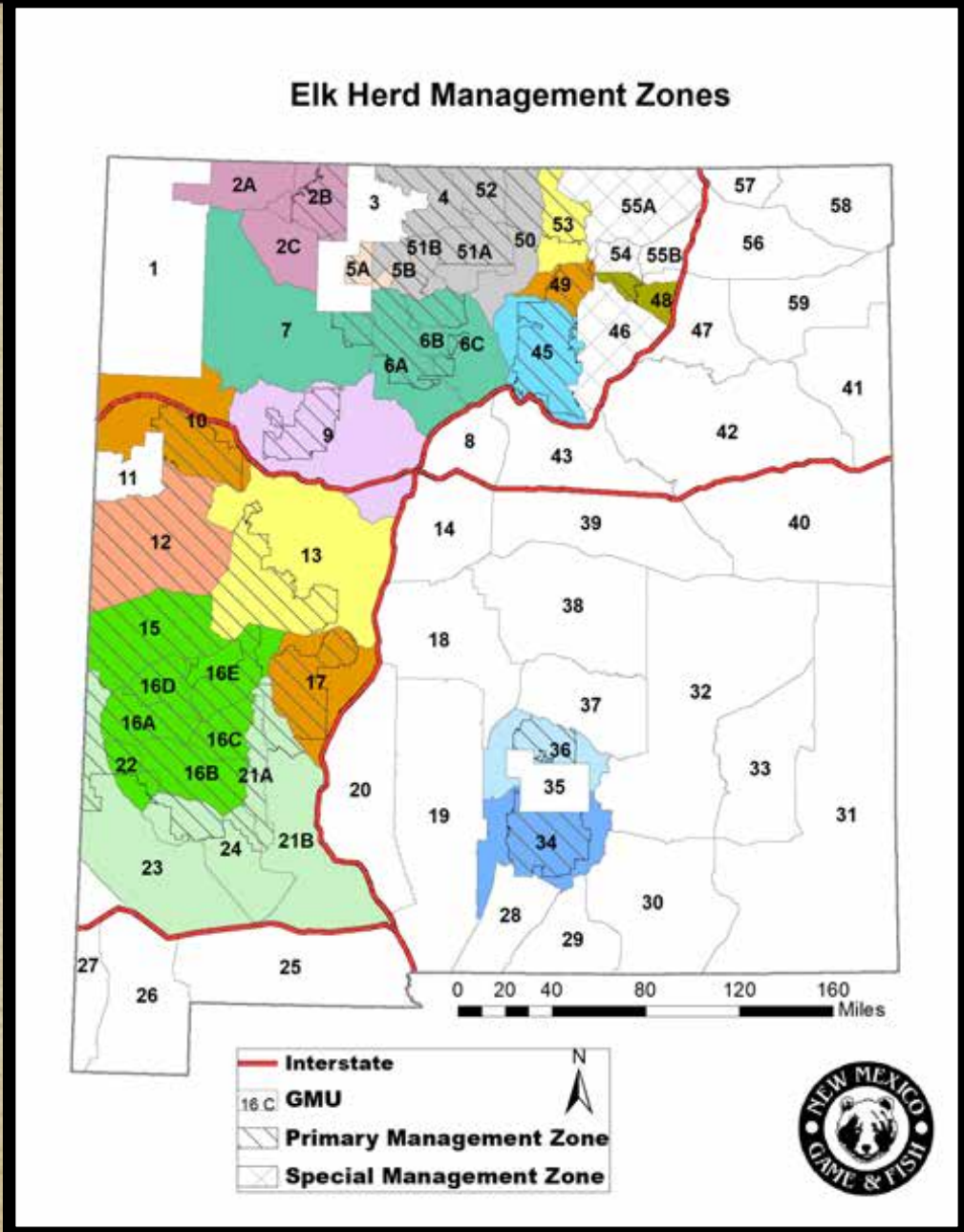
**New Mexico State Game Commission**



Primary Management Zone  
(previously COER) – 32 GMUs

Special Management  
Zone – 3 GMUs

Secondary Management  
Zone



# 2021 Elk Harvest Summary

- Statewide licences sold/converted → 38,179
  - 80% of hunters submitted harvest reports
    - 39% successful harvest
  - Estimated statewide harvest
    - Bulls → 9,076      Cows → 6,442
  - Satisfaction rating = 3.71



# Public Feedback

Hosted 4 hybrid in-person /virtual Public meetings and 1 Stakeholder meeting (GMU 34).

152 in attendance total  
(74 online)

**152 Official Comment Submissions**  
(211 comments total)



SUBJECTS FOR COMMENT	Frequency
Other recommendations	45
Muzzle loader scope removal SUPPORT	20
Muzzle loader scope removal AGAINST	61
Other Muzzle loader comment	22
GMU 34 to SMZ SUPPORT	2
GMU 34 to SMZ AGAINST	16
License adjustment SUPPORT	17
License adjustment AGAINST	7
Encouragement hunt change SUPPORT	10
Encouragement hunt change AGAINST	11

# Statewide recommendations

- Modify definition of Muzzleloader to include those muzzle-loading rifles that do not have a scope (for all big game species).
- Date shift all hunts where necessary to begin hunts on Saturday.
- Re-define “Encouragement Hunts” to be available to youth only.

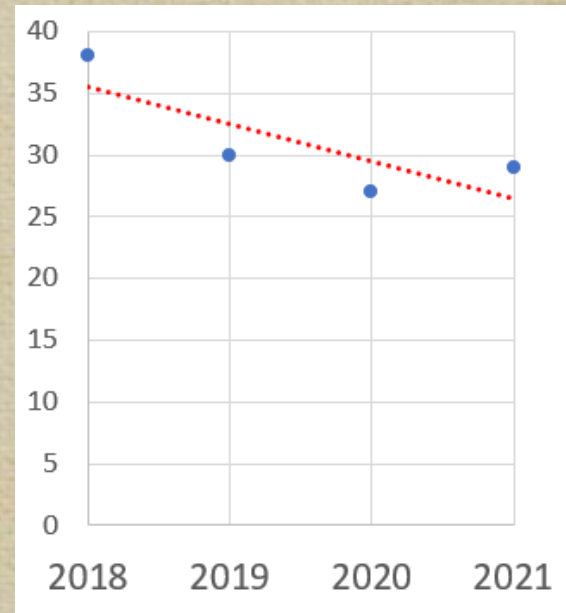


Figure: bull:cow ratios for Greater Gila 2018-2021



# Northwest Region

<b>NORTHWEST REGION TOTAL</b>			
<u>Herd Unit</u>	<u>License adj.</u>	<u>Total license change (#)</u>	<u>Total license change (%)</u>
San Juan	Increase	+95	+15%
Mt Taylor	Decrease	-67	-16%
<b>NORTHWEST REGION</b>	<b>Increase</b>	<b>+28</b>	<b>+1.6%</b>



# Northcentral Region

## NORTH CENTRAL REGION TOTAL

<u>Herd Unit</u>	<u>License adj.</u>	<u>Total license change (#)</u>	<u>Total license change (%)</u>
Chama/ San Antonio	Increase	+5	+3%
<b>NORTH CENTRAL REGION</b>	<b>Increase</b>	<b>+5</b>	<b>+0.1%</b>



# Jemez Region

## JEMEZ REGION TOTAL

<u>Herd Unit</u>	<u>License adj.</u>	<u>Total license change (#)</u>	<u>Total license change (%)</u>
Jemez	Increase	+85	+32%
<b>JEMEZ REGION</b>	<b>Increase</b>	<b>+85</b>	<b>+4.3%</b>



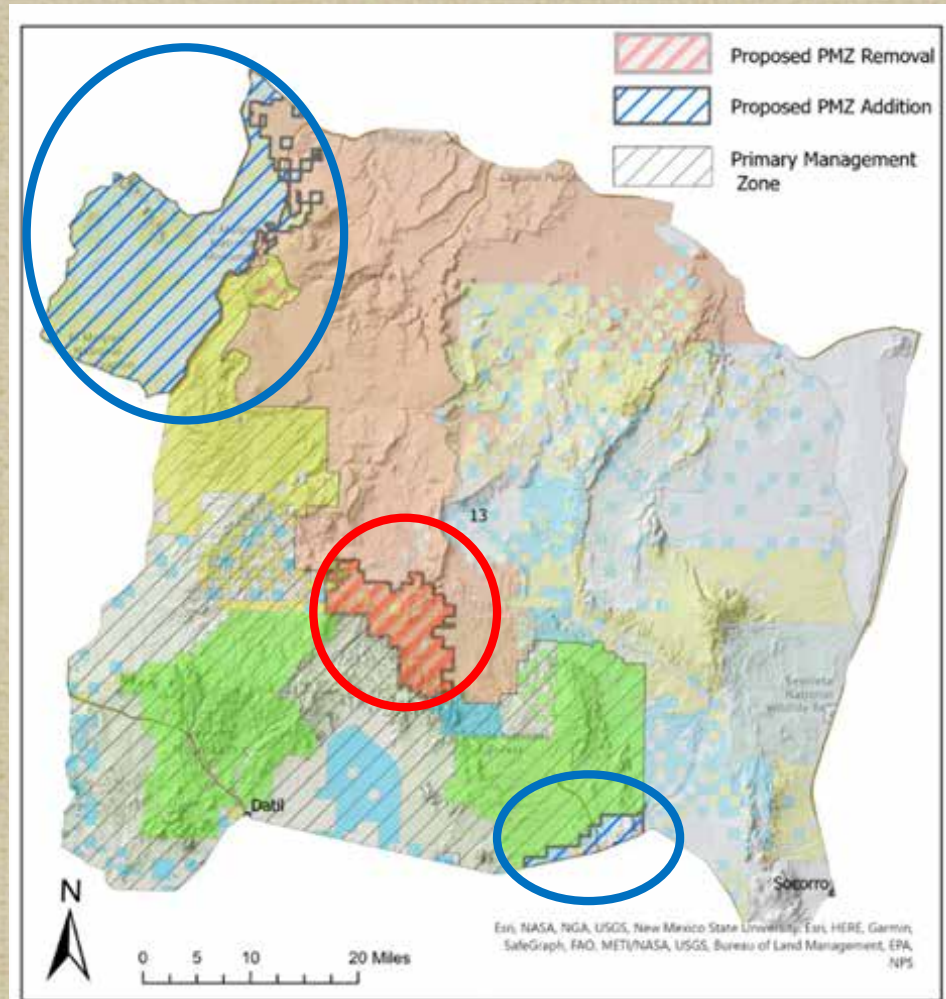


# Southwest Region

**Datil Herd Unit** Stable (53:100:33)

**GMU 13:** Expand PMZ by nearly 80k acres. Increase public licenses to reflect increase in public land within PMZ.

License Type	Proposed Change	Net Change
MB	Increase	+24
A	Increase	+15
ES	Increase	+22
Overall	Increase	+61 (6%)



## Acreage Summary

Total acreage	+78,917
Public acres	+96,439
Private acres	-17,522

## Ownership

## Percentage PMZ

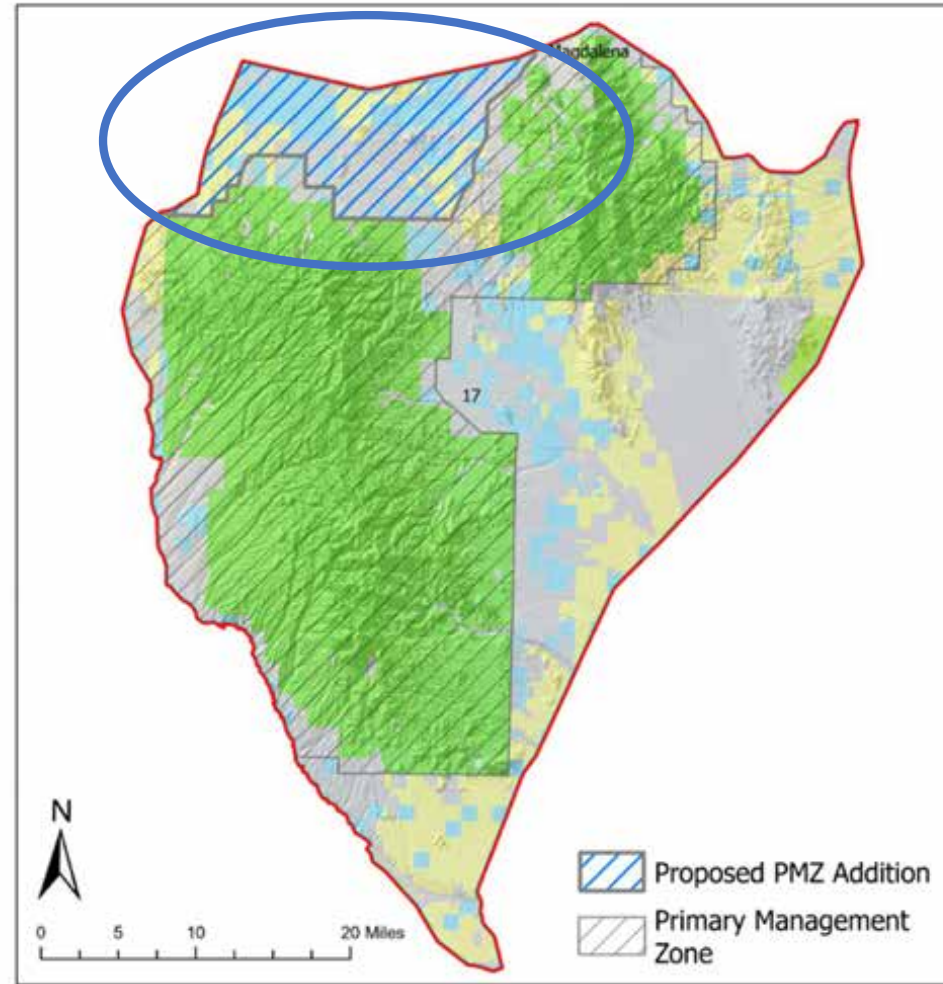
2019 RULE Public	58%
2019 RULE Private	42%
2023 RULE Public	63%
2023 RULE Private	37%



# Southwest Region

San Mateo/Magdalena Herd Unit  
Stable (51:100:38)

**GMU 17:** Expand PMZ to include NW portion.



## Acreage Summary

Total acreage	+90,605
Public acres	+55,113
Private acres	+35,492

## Ownership

2019 RULE Public	86%
2019 RULE Private	14%
2023 RULE Public	83%
2023 RULE Private	17%

## Percentage PMZ



# Southwest Region

Herd Unit	License adj.	Total license change (#)	Total license change (%)
Datil	Increase	+61	+6%
Greater Gila	Decrease	-179	-3.3%
Lesser Gila	Increase	+20	+2.7%
<b>SOUTHWEST REGION</b>	<b>Decrease</b>	<b>-98</b>	<b>-1.13%</b>



Photo: Travis Zaffarano



# Southeast Region

Herd Unit	License adj.	Total license change (#)	Total license change (%)
Sacramento	Increase	+445	+19%
Ruidoso	Increase	+155	+15%
<b>SOUTHEAST REGION</b>	<b>Increase</b>	<b>+600</b>	<b>+17.75%</b>



# Northeast Region

Herd Unit	License adj.	Total license change (#)	Total license change (%)
Ute-Midnight	Decrease	40	-5%
<b>NORTHEAST REGION</b>	<b>Decrease</b>	<b>-40</b>	<b>-1.75%</b>



# Secondary Management Zones

**GMU 19** : Remove WSMR elk hunt (-3 'ES' licenses), elk not consistently present

**GMU 30**:

- Increase 'ES' licenses (+40) to address increased elk use/expansion into Guadalupe mountains.
- Add GMU 29

**GMU 37**: Shift Oct. 1 hunt from muzzleloader to any legal sporting arm.

**GMU 43**: Expand huntable land to include GMU 39, no increase in licenses.

**GMU 42/47/59**: Increase 'ES' licenses in response to increase in accessible public lands (+9 licenses).

**GMU 57/58**: Create two archery hunts to increase archery opportunity as elk herd expands (+10 licenses)



# Special Management Zones

**GMU 46:** Shift from Special Management Zone to Secondary Management Zone.

**GMU 54: Collin Neblett WMA:** Decrease licenses by 50% for each bag limit in response to decrease in harvest success / limited presence of elk within WMA

**GMU 55: Valle Vidal:** Decrease licenses as a result of decreased calf recruitment (-40 licenses)



# Statewide Summary

Region	License adj.	Total license change (#)	Total license change (%)
<b>NORTHWEST REGION</b>	Increase	<b>+28</b>	<b>+1.6%</b>
<b>NORTH CENTRAL REGION</b>	Increase	<b>+5</b>	<b>+0.1%</b>
<b>JEMEZ REGION</b>	Increase	<b>+85</b>	<b>+32%</b>
<b>SOUTHWEST REGION</b>	Decrease	<b>-98</b>	<b>-1.13%</b>
<b>SOUTHEAST REGION</b>	Increase	<b>+600</b>	<b>+17.75%</b>
<b>NORTHEAST REGION</b>	Decrease	<b>-40</b>	<b>-1.75%</b>
<b>SECONDARY MANAGEMENT ZONE</b>	Increase	<b>+56</b>	<b>+10.5%</b>
<b>SPECIAL MANAGEMENT ZONE</b>	Decrease	<b>-140</b>	<b>-24.3%</b>
<b>STATEWIDE PUBLIC LICENSES</b>	Increase	<b>+496</b>	<b>+2%</b>





# Questions?



Photo: Nick Forman



# Northwest Region

Zuni Herd Unit Stable (35:100:32)

**GMU 10:** Shift December 'A' hunt earlier to dates prior to FS road closure (Dec 15<sup>th</sup>).  
No change in license numbers.

## NORTHWEST REGION TOTAL

<u>Herd Unit</u>	<u>License adj.</u>	<u>Total license change (#)</u>	<u>Total license change (%)</u>
San Juan	Increase	+95	+15%
Mt Taylor	Decrease	-67	-16%
<b>NORTHWEST REGION</b>	<b>Increase</b>	<b>+28</b>	<b>+1.6%</b>



# Northwest Region

**San Juan Herd Unit** Stable to Slightly Increasing (35:100:32)

**GMU 2:** Increase licenses for both 'A' and 'MB' hunts to address increased elk population and expanded range.

License Type	Proposed Change	Net Change
MB	Increase	+20
A	Increase	+75
Overall	Increase	+95 (15%)

**Mt Taylor Herd Unit** Stabilizing (26:100:28)

**GMU 9:** Increase 'MB' and 'ES' licenses on expanded Marquez/L-Bar WMA. Decrease licenses outside Marquez/L-Bar.

License Type	Proposed Change	Net Change
MB	decrease	-8
ES	decrease	-59
Overall	decrease	-67 (16%)



# Northcentral Region

## Chama/San Antonio Herd Unit

Stable (38:100:35)

**GMU 4:** Increase 'A' licenses on Rio Chama WMA.

**GMU 50:** Shift YE licenses to GMU 51 (60 'A' licenses shifted; **no net change in herd unit**)

GMU 4 License Type	Proposed Change	Net Change
A	Increase	+5
Overall	Increase	+5 (3%)

## NORTH CENTRAL REGION TOTAL

<u>Herd Unit</u>	<u>License adj.</u>	<u>Total license change (#)</u>	<u>Total license change (%)</u>
Chama/ San Antonio	Increase	+5	+3%
<b>NORTH CENTRAL REGION</b>	<b>Increase</b>	<b>+5</b>	<b>+0.1%</b>



# Northcentral Migrations

## Chama Herd

### Project Total:

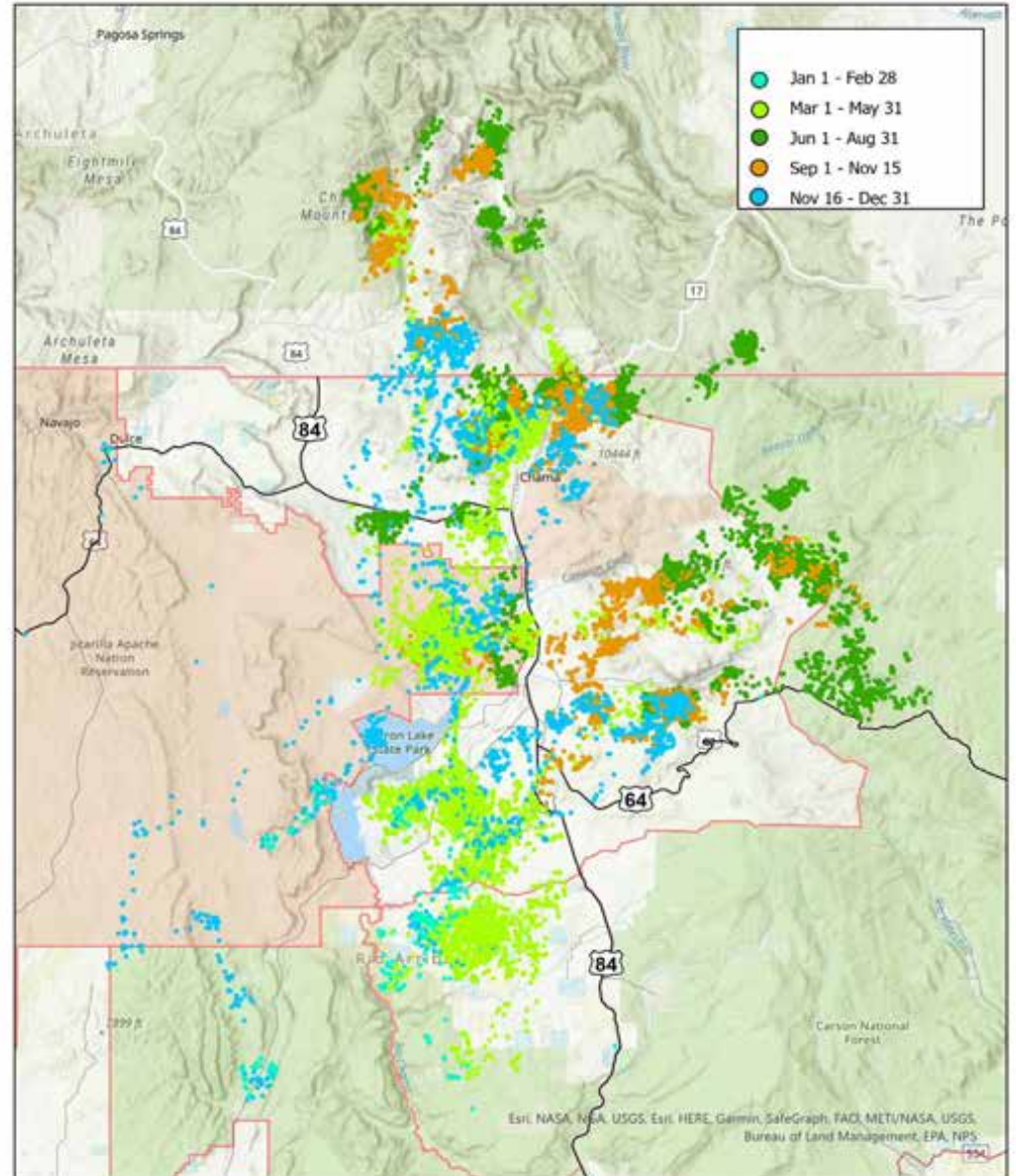
N= 41 Cow elk  
Between 2020-2022

### Shown Map:

n= 8 cow elk  
2021 data



## Long Distance Migration Elk



# Southwest Region

**Greater Gila Herd Unit** Stable (33:100:27)

**GMU 16A, 16B/22, 16C, 16E:** Decrease select MB licenses to address lower bull numbers and decreasing satisfaction for MB hunts in these units.

License type	Proposed Change	Net Change
16A (MB)	-25	-3%
16B/22 (MB)	-95	-13%
16C (MB)	-41	-6%
16E	-18	-3%
Overall, Gila herd unit	-179	-3.3%



# Southwest Region

## Lesser Gila Herd Unit Stable (39:100:37)

**GMU 21B:** Shift early October rifle hunt to begin October 1<sup>st</sup>

**GMU 23:** Create additional 'A' hunt south of HWY 78

**GMU 24:** Shift some hunts later to address later elk presence in unit

License Type	Proposed Change	Net Change
GMU 23 (Antlerless)	Add hunt	+20



# Southeast Region

**Sacramento Herd Unit** Increasing  
(52:100:39)

**GMU 34:**

- Create two new 'A' hunts in late Jan/early Feb to address increasing elk population.
- Increase license numbers in YE 'A' hunt

License Type	Proposed Change	Net Change
A	Increase	+445
Overall	Increase	+445 (19%)

**Ruidoso Herd Unit** Slightly Increasing  
(66:100:43)

**GMU 36:**

- Increase 'ES' licenses
- Increase 'A' licenses
- Create new 'A' hunt late Jan
- Change 'MB' licenses to 'ES'

License Type	Proposed Change	Net Change
MB	Change to ES	n/a
A	Increase	+140
ES	Increase	+15
Overall	Increase	+155 (15%)





# Northeast Region

**Whites Peak Herd Unit** Stable  
(35:100:32)

**GMU 48:** Shift 25 licenses from archery hunts to rifle hunts to address hunter density issues.

License Type	Proposed Change	Net Change
Archery	Decrease	-25
Rifle	Increase	+25
Overall	None	0

**Ute-Midnight-San Crystobal Herd Unit** Stable (34:100:32)

**GMU 53:** Remove 'N. Sunshine Valley Rd' hunt as need for harvest has decreased.

License Type	Proposed Change	Net Change
A	Decrease	-40
Overall	Decrease	-40 (5%)

Herd Unit	License adj.	Total license change (#)	Total license change (%)
Ute-Midnight	Decrease	40	-5%
<b>NORTHEAST REGION</b>	<b>Decrease</b>	<b>-40</b>	<b>-1.75%</b>



# Management Strategies

Optimal Opportunity  
Management (OOM):



Quality Hunt  
Management (QHM):



# Public Feedback

Hosted 4 Public meetings and 1 Stakeholder meeting (GMU 34).

152 in attendance total (74online)

**37 Other comments**



OTHER SUBJECTS	Frequency
Expand Muzzle loader definition to include NitroFire/FireStick ignition	6
Remove Unit-Wide Tag option from EPLUS	4
GMU 17 tag reduction	1
Combining GMU 29 with 30 SUPPORT	1
NMDGF to Adopt preference points to draw	1
Open EPLUS rule	3
Remove game camera use	1
Reduce 'A' licenses in Gila	4
Add elk licences in GMU 32	1
Redistribute licenses in GMU 48	1
Split GMU 34 into 2 units	1
Increase licenses in GMU 42/47/59 SUPPORT	1
Increase licenses in GMU 42/47/59 AGAINST	1
Fix the broken public draw system - more public licenses %	3
Spring bear hunt to decrease predation	1
Wolf management needs to be addressed	2
Increase in licenses (in general) AGAINST	1
Allow predator hunting in WMAs	1
"I Oppose"	3

# Proposed Rule Changes

- Adjust hunt seasons for calendar dates (5-day hunts, begin Saturday)
- Adjust licenses to reflect changes in biological and harvest trends
- Maintain current management objectives in PMZ



Photo: Travis Zaffarano



# Northcentral Migrations

## San Antonio Herd

N=31 Cow elk  
Between 2019-2022

