

**PROPOSED PRONGHORN
Rule
19.31.15 NMAC**



PRONGHORN BIOLOGY

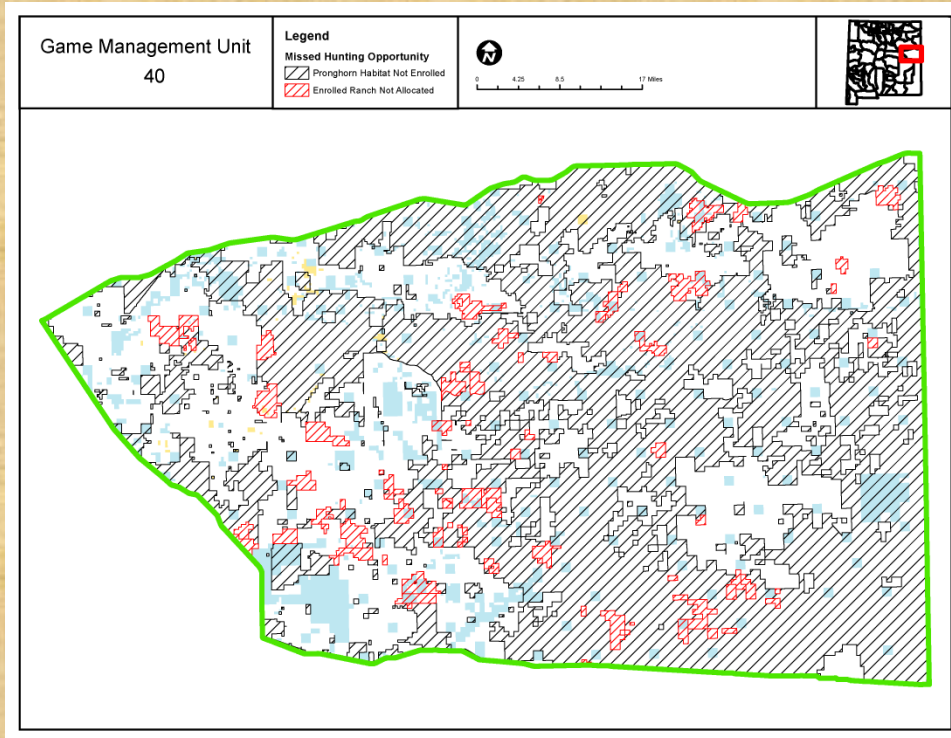
- Female & fawn survival drive population growth
- Male-only harvest is biologically sustainable
- Peak horn size @ ~2-4 years
- New survey methods (comparable B:D:F ratios)



CURRENT ISSUES

- Missed potential opportunity*
- Some ranches that sign up do not qualify
 - Based on acreage

GMU	# Ranches not qualifying
12	19
15	16
18	11
20	6
31	43
32	30
33	13
38	29
39	9
40	51
58	8
TOTAL	265

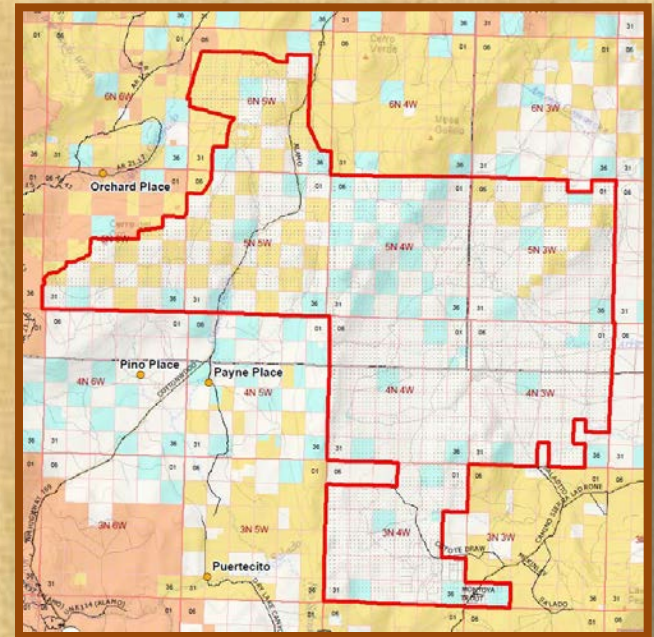


PROPOSED PRONGHORN HUNT STRUCTURE

- STATEWIDE
- Proposed statewide pronghorn hunt structure
 - Archery (9 days): 1st or 2nd Sat. in Aug.
 - 1st Rifle & Youth (3 days): 3rd or 4th Sat. in Aug.
 - 2nd Rifle and MIP (3 days): 4th or 5th Sat. in Aug.
 - 3rd Rifle (3 days): 2 options
 - Mid-week (Tues-Thurs) hunt in mid-Aug.*
 - Split some muzzleloader hunts (distribute hunting pressure)
 - Going from ~60 public hunt codes to ~160 hunt codes
 - Limited F/IM public youth hunts in NE 2nd Sat. in Oct.*
 - Private F/IM opportunity on case-by-base basis

NOTABLE CHANGES, GIVEN PUBLIC INPUT

- Checker-boarded properties
 - Unitization or ranch-wide agreements
- Adjustment of licenses
- Pronghorn conservation recognition program
- Split GMU's 31 & 32



PUBLIC COMMENT

- 4 public meetings: 71 attendees signed in
- Written responses: emailed – 111; letters – 29
 - Comments help shape proposal
- Major Comments:
 - Private Land OTC (32)
 - Public tags/opportunities (29)
 - Concerns about conflicts (26)
 - Hunt dates (21)
 - Access (14)
 - APLUS System (11)
 - Youth hunt dates (2)

NE AREA SUMMARY

- Population estimate: ~30,000 (37b:100d:40f)
- Proposed hunts
 - Rifle: 36% Increase
 - 379→515
 - Archery: 100% Increase
 - 100→200
 - Youth (Rifle): 180% Increase
 - 100→280 (50% ES, 50% F/IM)
 - Mobility Impaired (Rifle): Maintain current opportunity



Tres Piedras

- Population estimate: ~500-700 (21b:100d:41f)
 - Survey does not include high elevation areas
 - Pronghorn intermix with those in GMU 4
- Proposed hunts
 - No change to total public license numbers from current
 - Propose to separate into 2 muzzleloader hunts of 40
 - Add an archery hunt of 20 licenses
 - Open GMU 4 to hunting on private land



SE AREA

- Population estimate: ~14,000 (29b:100d:28f)
- Proposed hunts
 - Rifle: 6% Increase
 - 369→390
 - Archery: 20% Increase
 - 210→250
 - Youth (Rifle): Maintain current opportunity
 - Mobility Impaired (Rifle): Maintain current opportunity
 - Split GMU's 31 & 32



NW AREA

- Population estimate: ~1,500
- Proposed hunts
 - Rifle: 18% Increase
 - 17→20
 - Archery: 33% Increase
 - 15→20
 - Youth (Rifle): Maintain Current

SW AREA

- Population estimate: ~2,500
(44b:100d:30f)
- Proposed hunts
 - Rifle: 52% Increase
 - 122→185
 - Archery: 11% Increase
 - 122→135
 - Youth (Rifle): 14% Increase
 - 37→42
 - Mobility Impaired (Rifle): Maintain current opportunity



QUESTIONS?



NE

GMU 41

Publicly accessible land: 18%

DEER

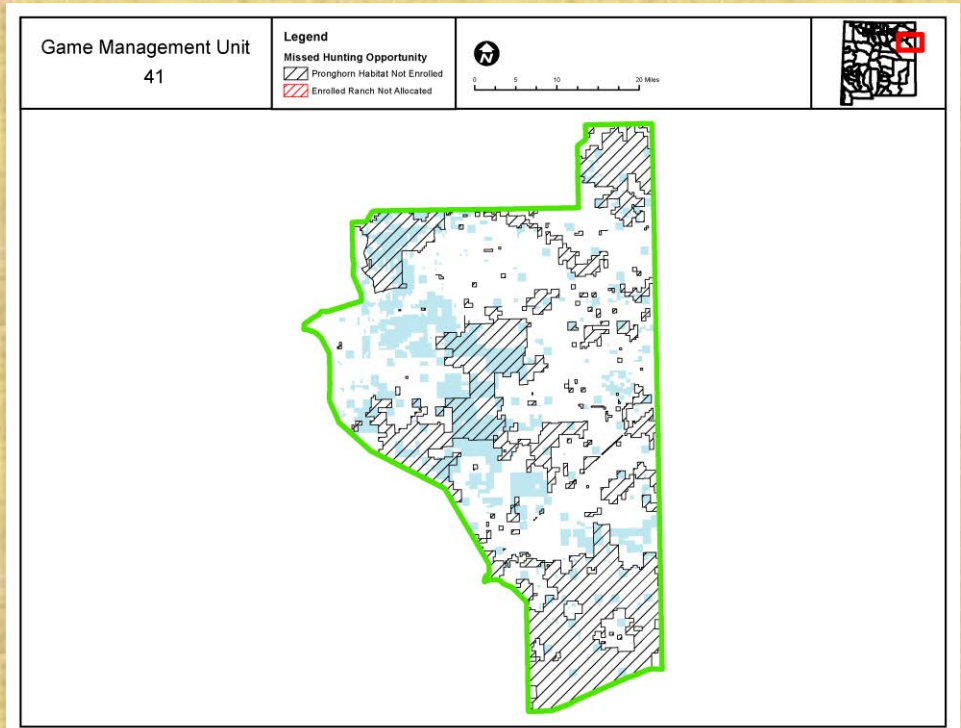
- Private licenses: 126
- Public draw licenses: 136
 - 52% of licenses are public draw on public land.

PRONGHORN Hunting opportunities currently being issued through A-PLUS

- Current Private (rifle)
 - Allocated: 247
 - **Unconverted: 35**
 - **Converted: 212**
- Current Public (rifle)
 - Draw licenses: 49
- **Total Current Opportunity: 261**

PRONGHORN PROPOSED

- Proposed Private (rifle)
 - **Expected new: 300**
- Proposed Public (rifle)
 - **Proposed: 95***
- **Total Expected Opportunity: 395**



PROPOSED PUBLIC HUNT STRUCTURE				
Hunt	Date	Duration	Licenses	Bag
Youth*	3 rd or 4 th Sat. in Aug.	3 days	5	ES
Archery	1 st or 2 nd Sat. in Aug.	9 days	35	MB
1st Rifle	3rd or 4th Sat. in Aug.	3 days	30	MB
2nd Rifle	4th or 5th Sat. in Aug.	3 days	30	MB
MIP	4 th or 5 th Sat. in Aug.	3 days	5	MB
3rd Rifle	Last Sat. in Sept. OR mid-week in Aug.	3 days	35	MB
Subtotal Rifle			95*	MB
Total all Methods			135	

GMU 42

Publicly accessible land: 6%

DEER

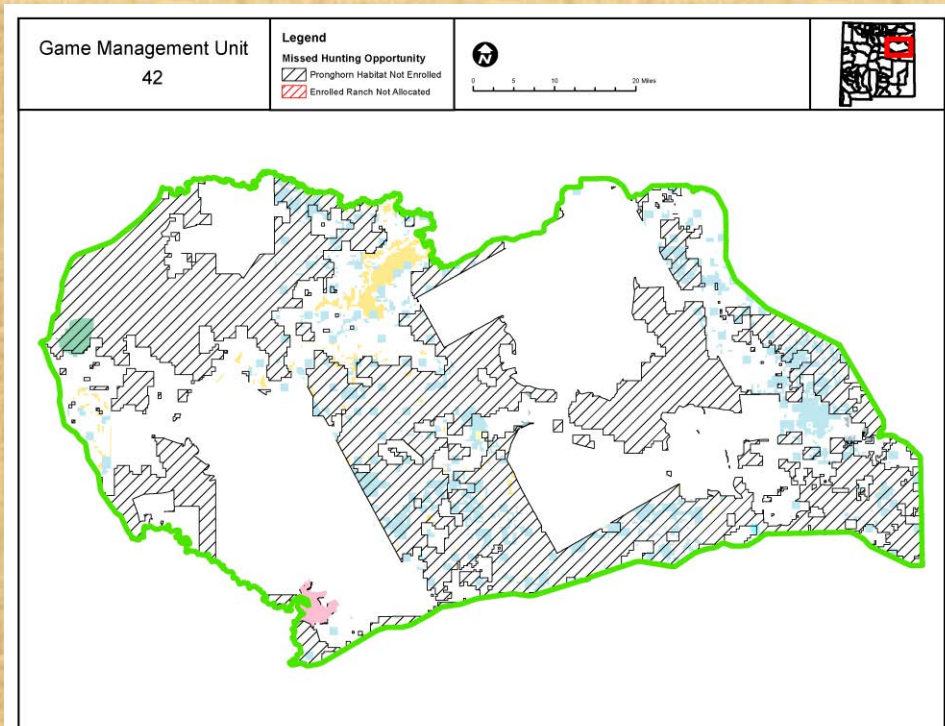
- Private licenses: 204
- Public draw licenses: 88
 - 30% of licenses are public draw on public land.

PRONGHORN Hunting opportunities currently being issued through A-PLUS

- Current Private (rifle)
 - Allocated: 128
 - **Unconverted: 56**
 - **Converted: 72**
- Current Public (rifle)
 - Draw licenses: 0
- **Total Current Opportunity: 72**

PRONGHORN PROPOSED

- Proposed Private (rifle)
 - **Expected new: 80**
- Proposed Public (rifle)
 - **Proposed: 20***
- **Total Expected Opportunity: 100**



PROPOSED PUBLIC HUNT STRUCTURE				
Hunt	Date	Duration	Licenses	Bag
Youth*	3 rd or 4 th Sat. in Aug.	3 days	10	ES
Archery	1 st or 2 nd Sat. in Aug.	9 days	5	MB
1st Rifle	3rd or 4th Sat. in Aug.		NA	
2nd Rifle	4th or 5th Sat. in Aug.	3 days	10	MB
MIP	4 th or 5 th Sat. in Aug.	3 days	NA	
3rd Rifle	Last Sat. in Sept. OR mid-week in Aug.	3 days	10	MB
Subtotal Rifle			20*	MB
Total all Methods			35	

GMU 8 & 43

Publicly accessible land: 20%

DEER

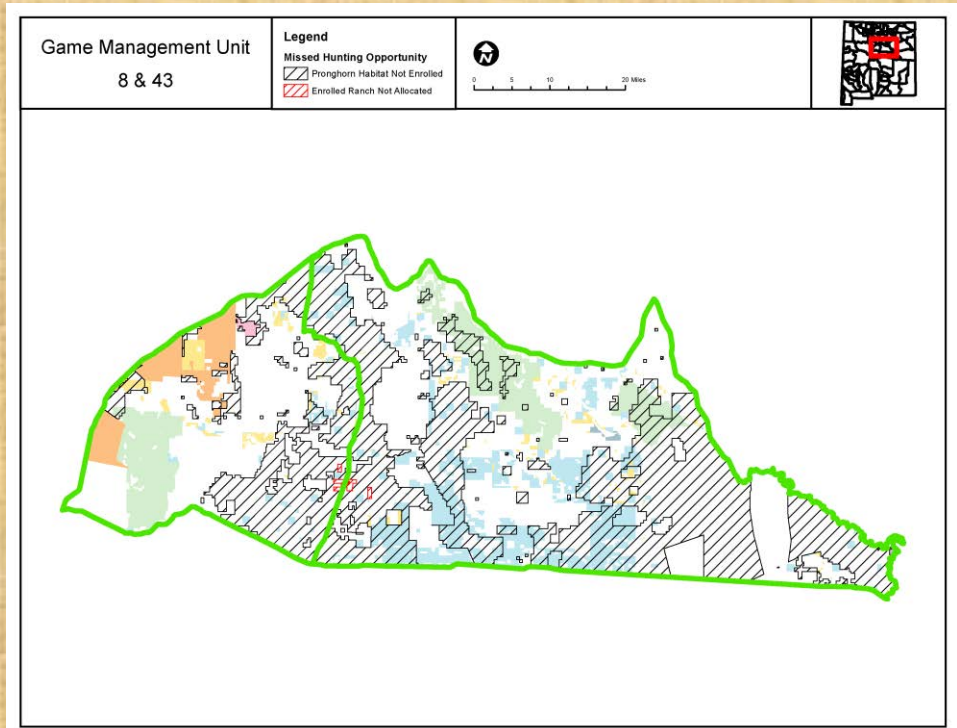
- Private licenses: 76
- Public draw licenses: 153
 - 67% of licenses are public draw on public land.

PRONGHORN Hunting opportunities currently being issued through A-PLUS

- Current Private (rifle)
 - Allocated: 38
 - **Unconverted: 13**
 - **Converted: 25**
- Current Public (rifle)
 - Draw licenses: 9
- **Total Current Opportunity: 34**

PRONGHORN PROPOSED

- Proposed Private (rifle)
 - **Expected new: 30**
- Proposed Public (rifle)
 - **Proposed: 10***
- **Total Expected Opportunity: 40**



PROPOSED PUBLIC HUNT STRUCTURE				
Hunt	Date	Duration	Licenses	Bag
Youth*	3 rd or 4 th Sat. in Aug.	3 days	NA	
Archery	1 st or 2 nd Sat. in Aug.	9 days	5	MB
1st Rifle	3rd or 4th Sat. in Aug.	3 days	10	MB
2nd Rifle	4th or 5th Sat. in Aug.	3 days	NA	
MIP	4 th or 5 th Sat. in Aug.	3 days	NA	
3rd Rifle	Last Sat. in Sept. OR mid-week in Aug.	3 days	NA	
Subtotal Rifle			10*	MB
Total all Methods			15	

GMU 47

Publicly accessible land: 20%

DEER

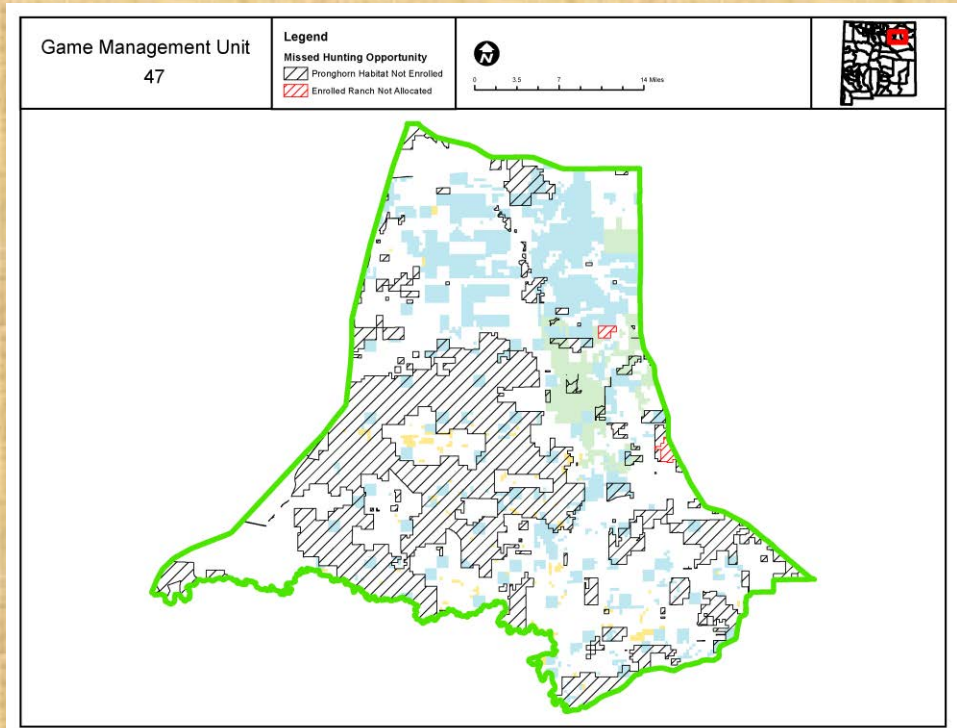
- Private licenses: 80
- Public draw licenses: 65
 - 45% of licenses are public draw on public land.

PRONGHORN Hunting opportunities currently being issued through A-PLUS

- Current Private (rifle)
 - Allocated: 114
 - **Unconverted: 48**
 - **Converted: 66**
- Current Public (rifle)
 - Draw licenses: 42
- **Total Current Opportunity: 108**

PRONGHORN PROPOSED

- Proposed Private (rifle)
 - **Expected new: 90**
- Proposed Public (rifle)
 - **Proposed: 90***
- **Total Expected Opportunity: 180**



PROPOSED PUBLIC HUNT STRUCTURE				
Hunt	Date	Duration	Licenses	Bag
Youth*	3 rd or 4 th Sat. in Aug.	3 days	5	ES
Archery	1 st or 2 nd Sat. in Aug.	9 days	10	MB
1st Rifle	3rd or 4th Sat. in Aug.	3 days	25	MB
2nd Rifle	4th or 5th Sat. in Aug.	3 days	30	MB
MIP	4 th or 5 th Sat. in Aug.	3 days	5	MB
3rd Rifle	Last Sat. in Sept. OR mid-week in Aug.	3 days	35	MB
Subtotal Rifle			90*	MB
Total all Methods			110	

GMU 56

Publicly accessible land: 19%

DEER

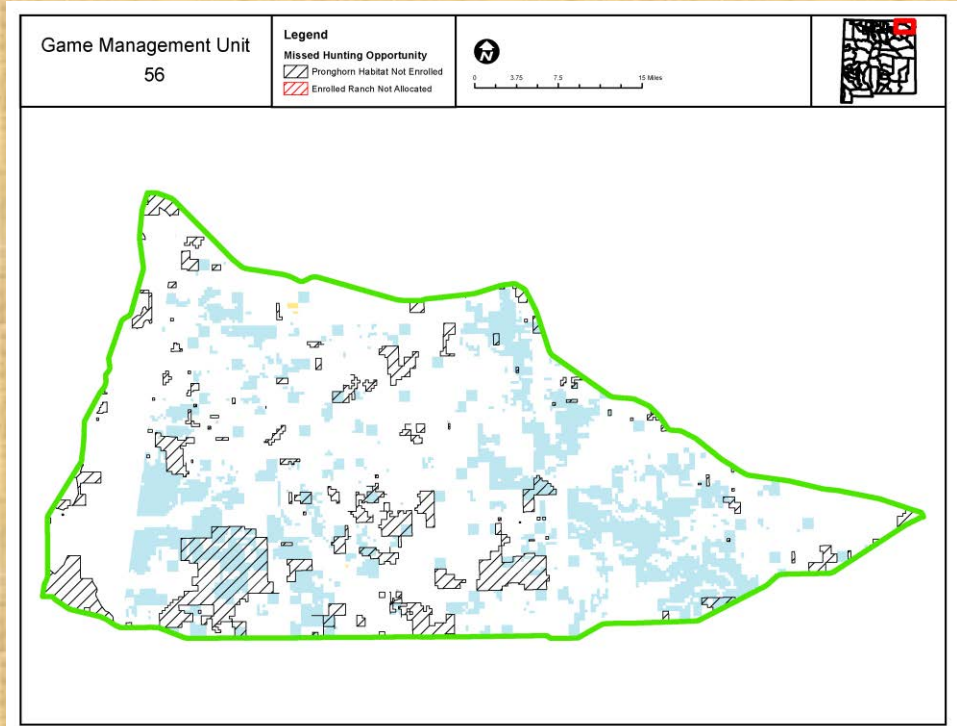
- Private licenses: 62
- Public draw licenses: 60
 - 49% of licenses are public draw on public land.

PRONGHORN Hunting opportunities currently being issued through A-PLUS

- Current Private (rifle)
 - Allocated: 703
 - **Unconverted: 177**
 - **Converted: 526**
- Current Public (rifle)
 - Draw licenses: 120
- **Total Current Opportunity: 646**

PRONGHORN PROPOSED

- Proposed Private (rifle)
 - **Expected new: 630**
- Proposed Public (rifle)
 - **Proposed: 100***
- **Total Expected Opportunity: 730**



PROPOSED PUBLIC HUNT STRUCTURE				
Hunt	Date	Duration	Licenses	Bag
Youth*	3 rd or 4 th Sat. in Aug.	3 days	50	ES
Archery	1 st or 2 nd Sat. in Aug.	9 days	50	MB
1st Rifle	3rd or 4th Sat. in Aug.	3 days	5	MB
2nd Rifle	4th or 5th Sat. in Aug.	3 days	45	MB
MIP	4 th or 5 th Sat. in Aug.	3 days	5	MB
3rd Rifle	Last Sat. in Sept. OR mid-week in Aug.	3 days	50	MB
Subtotal Rifle			100*	MB
Total all Methods			205	

GMU 57

Publicly accessible land: 11%

DEER

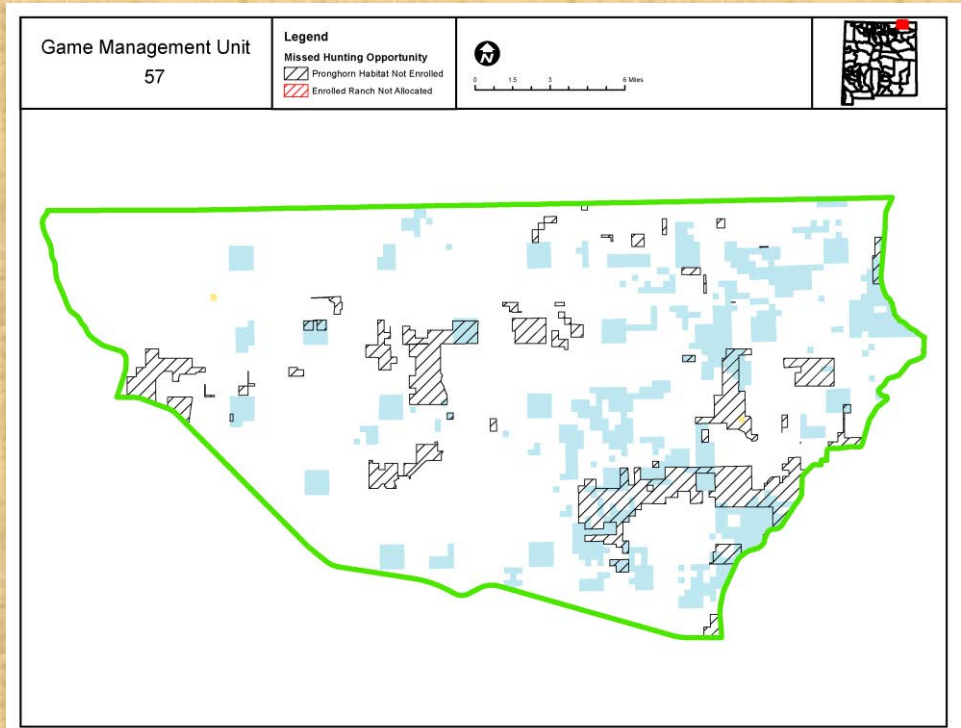
- Private licenses: 175
- Public draw licenses: 121
 - 41% of licenses are public draw on public land.

PRONGHORN Hunting opportunities currently being issued through A-PLUS

- Current Private (rifle)
 - Allocated: 71
 - **Unconverted: 18**
 - **Converted: 53**
- Current Public (rifle)
 - Draw licenses: 5
- **Total Current Opportunity: 58**

PRONGHORN PROPOSED

- Proposed Private (rifle)
 - **Expected new: 70**
- Proposed Public (rifle)
 - **Proposed: 10***
- **Total Expected Opportunity: 80**



PROPOSED PUBLIC HUNT STRUCTURE				
Hunt	Date	Duration	Licenses	Bag
Youth*	3 rd or 4 th Sat. in Aug.	3 days	10	ES
Archery	1 st or 2 nd Sat. in Aug.	9 days	10	MB
1st Rifle	3rd or 4th Sat. in Aug.	3 days	NA	
2nd Rifle	4th or 5th Sat. in Aug.	3 days	10	MB
MIP	4 th or 5 th Sat. in Aug.	3 days	NA	
3rd Rifle	Last Sat. in Sept. OR mid-week in Aug.	3 days	NA	
Subtotal Rifle			10*	MB
Total all Methods			30	

GMU 58

Publicly accessible land: 18%

DEER

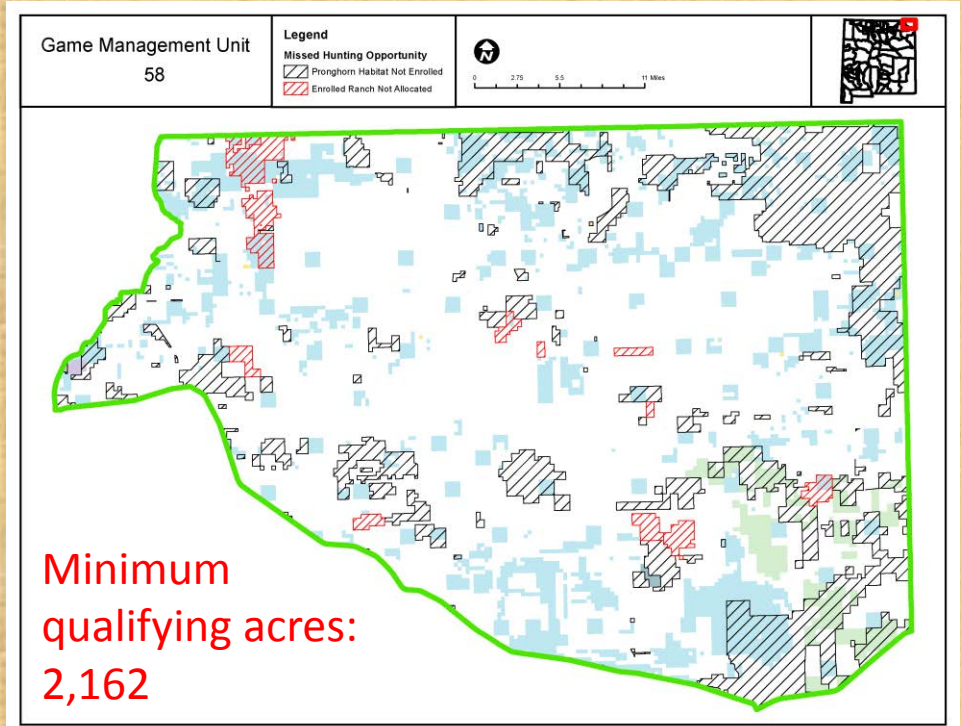
- Private licenses: 124
- Public draw licenses: 120
 - 49% of licenses are public draw on public land.

PRONGHORN Hunting opportunities currently being issued through A-PLUS

- Current Private (rifle)
 - Allocated: 213
 - **Unconverted: 43**
 - **Converted: 170**
- Current Public (rifle)
 - Draw licenses: 34
- **Total Current Opportunity: 204**

PRONGHORN PROPOSED

- Proposed Private (rifle)
 - **Expected new: 190**
- Proposed Public (rifle)
 - **Proposed: 95***
- **Total Expected Opportunity: 285**



PROPOSED PUBLIC HUNT STRUCTURE				
Hunt	Date	Duration	Licenses	Bag
Youth*	3 rd or 4 th Sat. in Aug.	3 days	15	ES
Archery	1 st or 2 nd Sat. in Aug.	9 days	35	MB
1st Rifle	3rd or 4th Sat. in Aug.	3 days	25	MB
2nd Rifle	4th or 5th Sat. in Aug.	3 days	30	MB
MIP	4 th or 5 th Sat. in Aug.	3 days	5	MB
3rd Rifle	Last Sat. in Sept. OR mid-week in Aug.	3 days	40	MB
Subtotal Rifle			95*	MB
Total all Methods			150	

GMU 59

Publicly accessible land: 22%

DEER

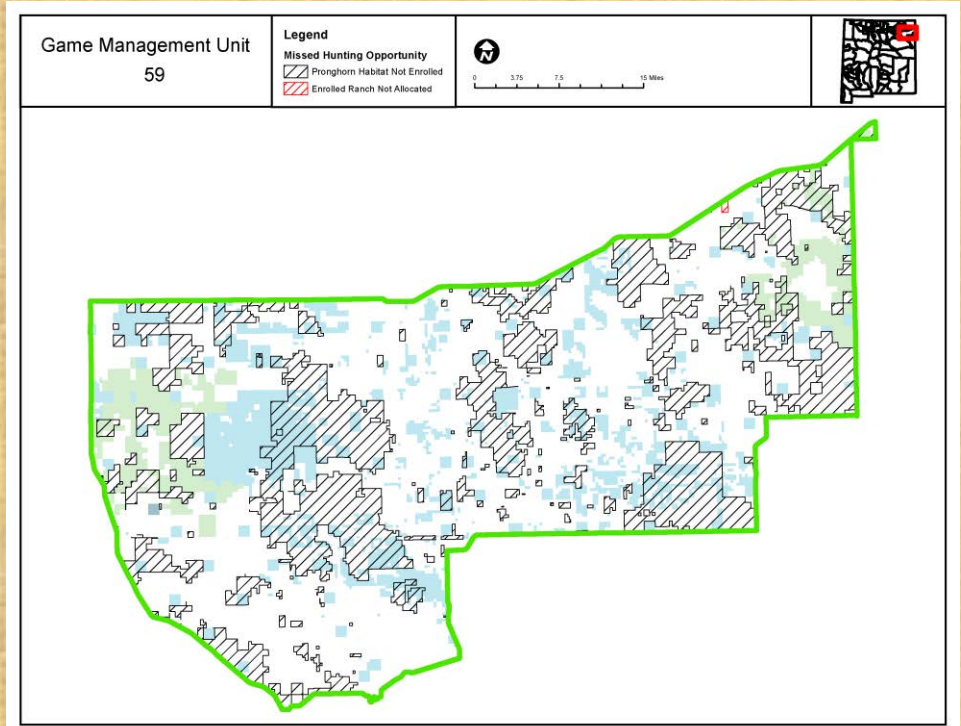
- Private licenses: 134
- Public draw licenses: 134
 - 50% of licenses are public draw on public land.

PRONGHORN Hunting opportunities currently being issued through A-PLUS

- Current Private (rifle)
 - Allocated: 398
 - **Unconverted: 121**
 - **Converted: 277**
- Current Public (rifle)
 - Draw licenses: 128
- **Total Current Opportunity: 405**

PRONGHORN PROPOSED

- Proposed Private (rifle)
 - **Expected new: 330**
- Proposed Public (rifle)
 - **Proposed: 95***
- **Total Expected Opportunity: 425**



PROPOSED PUBLIC HUNT STRUCTURE				
Hunt	Date	Duration	Licenses	Bag
Youth*	3 rd or 4 th Sat. in Aug.	3 days	45	ES
Archery	1 st or 2 nd Sat. in Aug.	9 days	50	MB
1st Rifle	3rd or 4th Sat. in Aug.	3 days	5	MB
2nd Rifle	4th or 5th Sat. in Aug.	3 days	40	MB
MIP	4 th or 5 th Sat. in Aug.	3 days	10	MB
3rd Rifle	Last Sat. in Sept. OR mid-week in Aug.	3 days	50	MB
Subtotal Rifle			95*	MB
Total all Methods			200	

GMUs 14, 46, 48, 54, and 55

- No public draw hunt
- Hunt date to match public hunt dates in surrounding GMUs

PRONGHORN

- Current private:
 - Allocated: 381
 - Converted: 180
 - Unconverted: 201
- Expected private rifle:
 - ~280 licenses

PROPOSED PUBLIC HUNT STRUCTURE			
Hunt	Date	Duration	Bag
Youth*	3 rd or 4 th Sat. in Aug.	3 days	ES
Archery	1 st or 2 nd Sat. in Aug.	9 days	MB
1st Rifle	3rd or 4th Sat. in Aug.	3 days	MB
2nd Rifle	4th or 5th Sat. in Aug.	3 days	MB
3rd Rifle	Last Sat. in Sept. OR mid-week in Aug.	3 days	MB
Total			

Tres Piedras

GMU 50 & 52*

Publicly accessible land: 80%

DEER

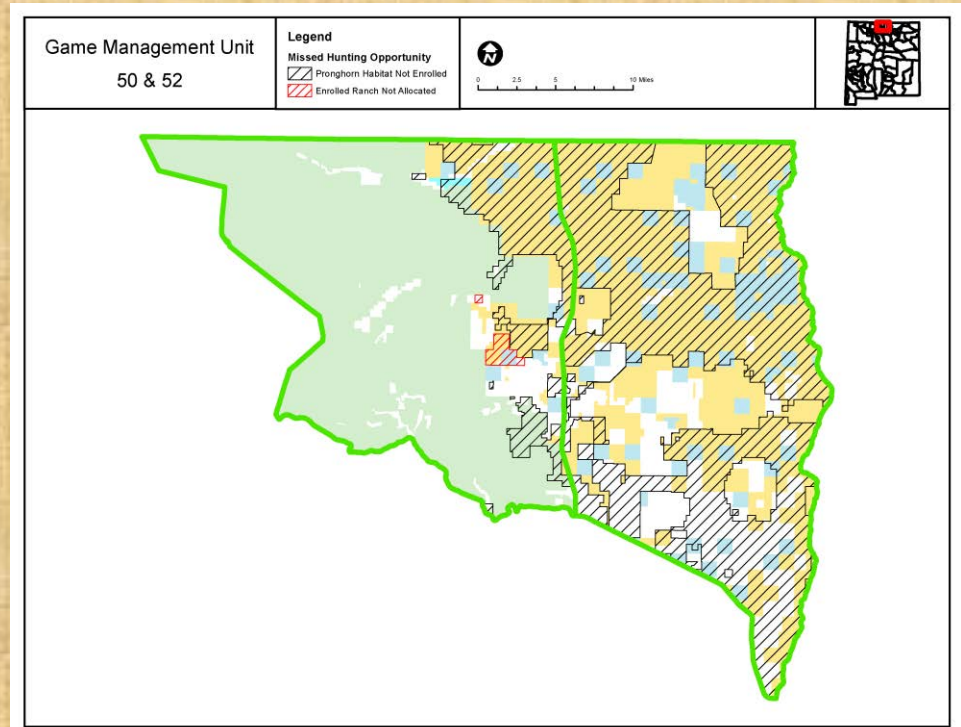
- Private licenses: 386
- Public draw licenses: 43
 - 90% of licenses are public draw on public land.

PRONGHORN Hunting opportunities currently being issued through A-PLUS

- Current Private (muzzleloader)
 - Allocated: 15
 - **Unconverted: 2**
 - **Converted: 13**
- Current Public (rifle)
 - Draw licenses: 100
- **Total Current Opportunity: 113**

PRONGHORN PROPOSED

- Proposed Private (muzzleloader)
 - *Expected new: 20*
- Proposed Public (muzzleloader)
 - *Proposed: 120**
- **Total Expected Opportunity: 140**



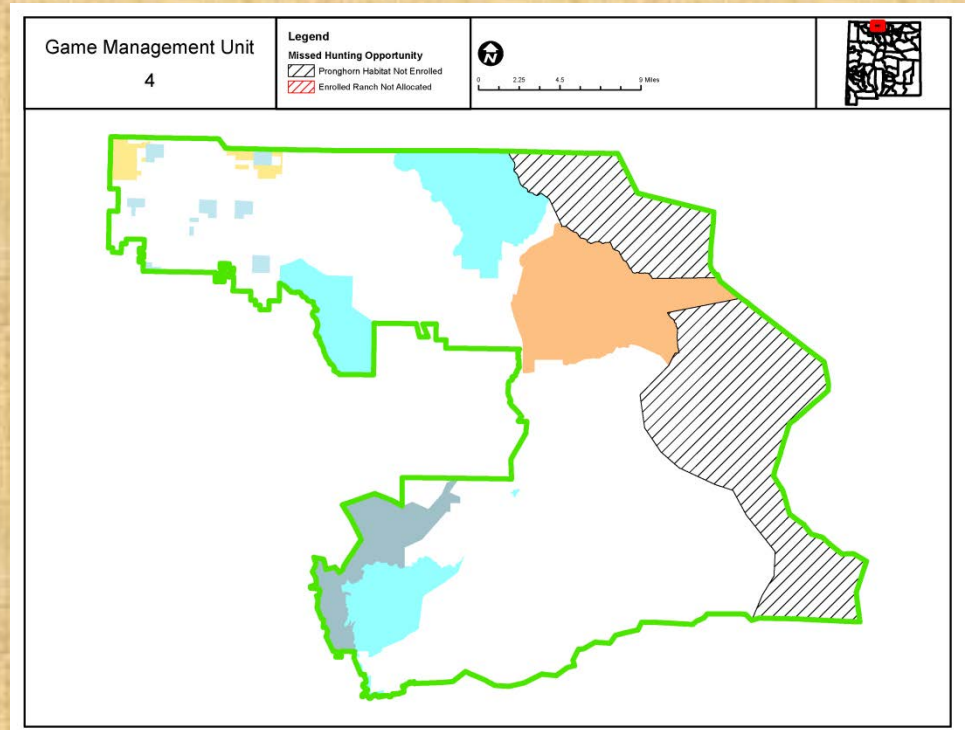
PROPOSED PUBLIC HUNT STRUCTURE				
Hunt	Date	Duration	Licenses	Bag
Youth Muzzleloader	1 st Saturday in August	3 days	40	ES
Archery	Immediately following Youth Hunt	9 days	20	MB
1 st Muzzleloader	3 rd Saturday in August	3 days	40	MB
2 nd Muzzleloader	4 th Saturday in August	3 days	40	MB
Subtotal Muzzleloader			120*	MB
Total all Methods			140	

GMU 4

- Pronghorn are on private land on eastern portion of GMU

PRONGHORN

- Not previously hunted
- Expected private rifle:
 - ~30 licenses



PROPOSED HUNT STRUCTURE			
Hunt	Date	Duration	Bag
Youth Muzzleloader	1 st Saturday in August	3 days	ES
Archery	Immediately following Youth Hunt	9 days	MB
1 st Muzzleloader	3 rd Saturday in August	3 days	MB
2 nd Muzzleloader	4 th Saturday in August	3 days	MB

SE

GMU 18

Publicly accessible land: 57%

DEER

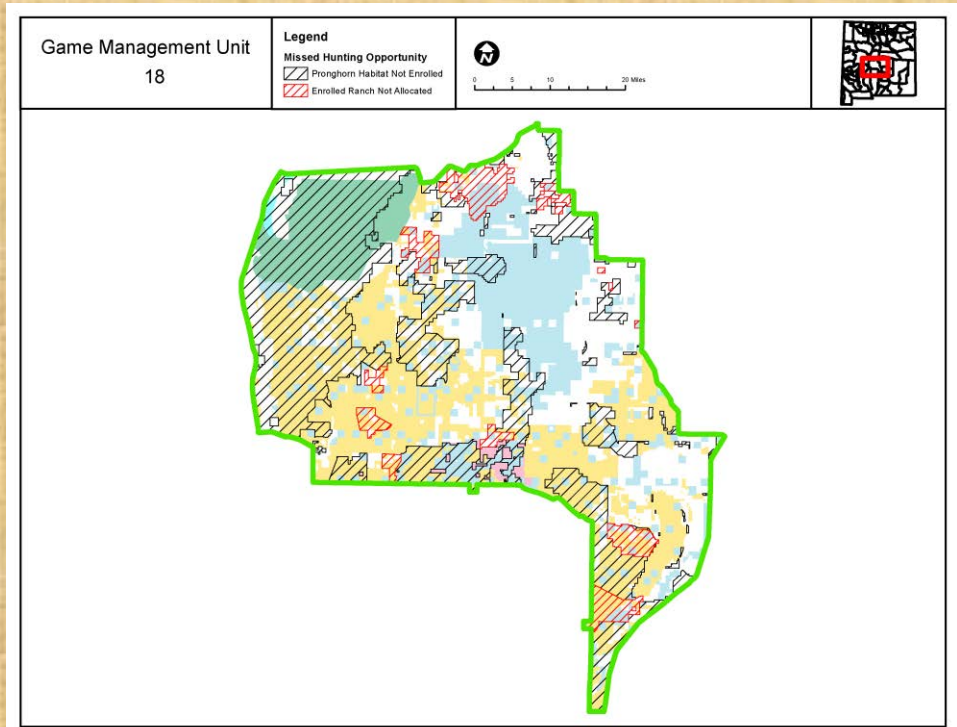
- Private licenses: 70
- Public draw licenses: 300
 - 81% of licenses are public draw on public land.

PRONGHORN Hunting opportunities currently being issued through A-PLUS

- Current Private (rifle)
 - Allocated: 82
 - **Unconverted: 21**
 - **Converted: 61**
- Current Public (rifle)
 - Draw licenses: 52
- **Total Current Opportunity: 113**

PRONGHORN PROPOSED

- Proposed Private (rifle)
 - **Expected new: 90**
- Proposed Public (rifle)
 - **Proposed: 30***
- **Total Expected Opportunity: 120**



PROPOSED PUBLIC HUNT STRUCTURE				
Hunt	Date	Duration	Licenses	Bag
Youth*	Last Sat. in Sept.	3 days	NA	
Archery	1 st or 2 nd Sat. in Aug.	9 days	25	MB
1st Rifle	3rd or 4th Sat. in Aug.	3 days	15	MB
2nd Rifle	4th or 5th Sat. in Aug.	3 days	15	MB
MIP	4 th or 5 th Sat. in Aug.	3 days	NA	
3rd Rifle	Last Sat. in Sept. OR mid-week in Aug.	3 days	NA	
Subtotal Rifle			30*	MB
Total all Methods			55	

GMU 28

- Ft. Bliss/McGregor Range
 - NMDGF and Dept. of Defense coordinate public hunting
- No proposed change to hunt structure and tag allocations

Proposed Public Hunt Structure			
Hunt	Date	Licenses	Bag
Youth	Last Sat. in Sept.	NA	
Archery	1 st or 2 nd Sat. in Aug.	NA	
1st Rifle	1st Sat. in Sept.	5	MB
MIL	1st Sat. in Sept.	10	MB
2nd Rifle	4 th or 5 th Sat. in Aug.	NA	
MIP	1 st Sat. in Sept.	NA	
3rd Rifle	Last Sat. in Sept. OR mid-week in Aug.	NA	
Total		15	

GMU 29

Publicly accessible land: 84%

DEER

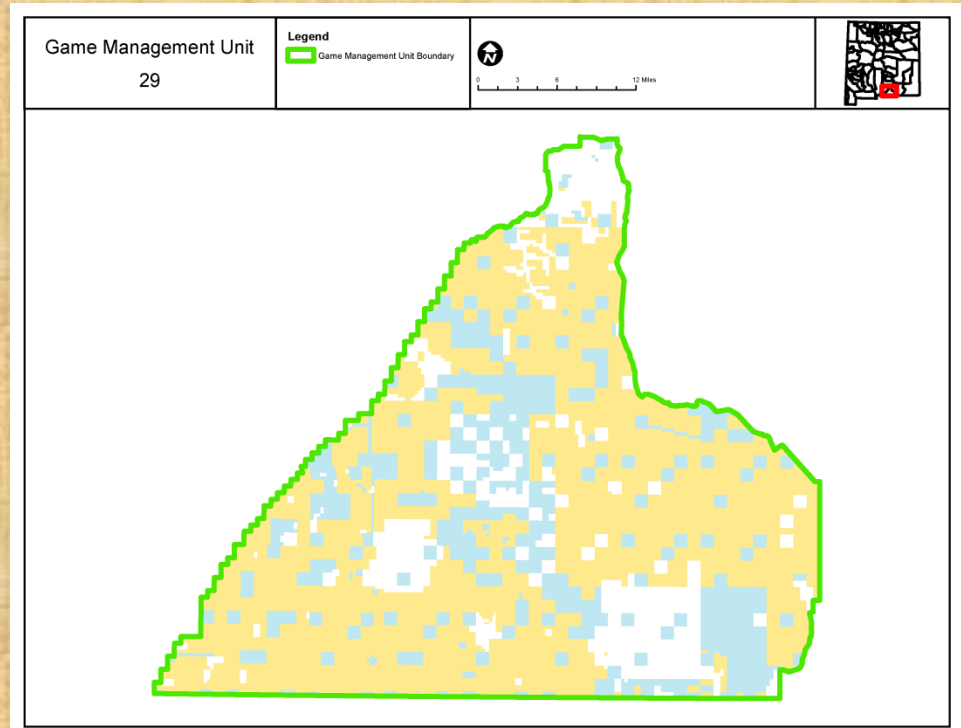
- Private licenses: 559
- Public draw licenses: 23
 - 96% of licenses are public draw on public land.

PRONGHORN Hunting opportunities currently being issued through A-PLUS

- Current Private (muzzleloader)
 - Allocated: 9
 - **Unconverted: 6**
 - **Converted: 3**
- Current Public (muzzleloader)
 - Draw licenses: 35
- **Total Current Opportunity: 38**

PRONGHORN PROPOSED

- Proposed Private (muzzleloader)
 - **Expected new: 5**
- Proposed Public (muzzleloader)
 - **Proposed: 40***
- **Total Expected Opportunity: 45**



Proposed Public Hunt Structure			
Hunt	Date	Licenses	Bag
Youth Muzzleloader	3 rd or 4 th Sat. in Aug.	5	ES
Archery		NA	
1st Muzzleloader	3rd or 4th Sat. in Aug.	15	MB
1st Rifle		NA	
2nd Rifle		NA	
MIP		NA	
2nd Muzzleloader	4th or 5th Sat. in Aug.	25	MB
3rd Rifle		NA	
Total		40	

GMU 30

Publicly accessible land: 75%

DEER

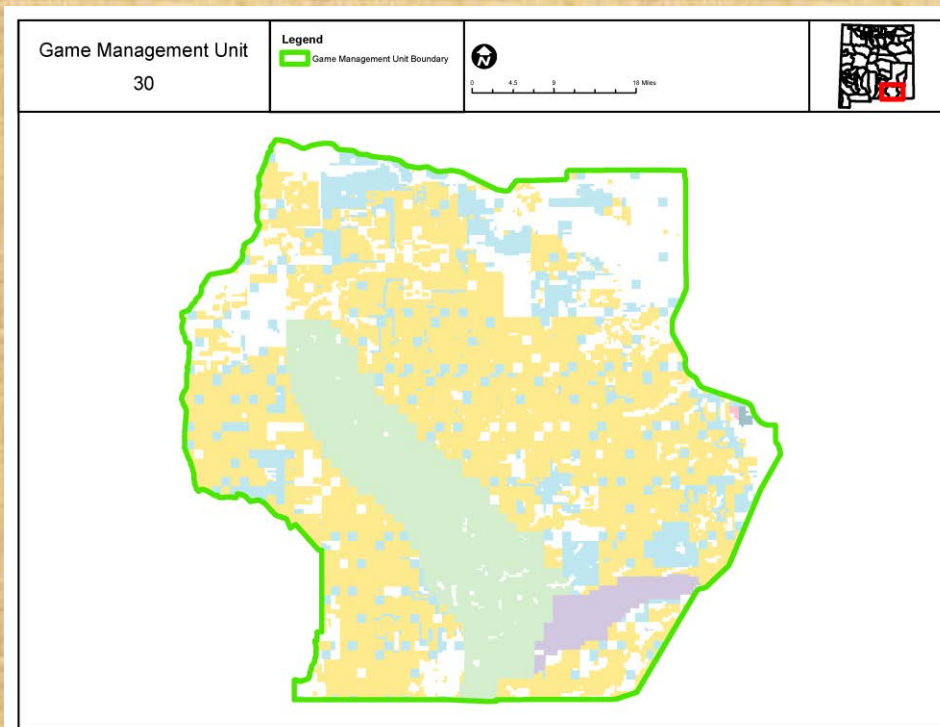
- Private licenses: 238
- Public draw licenses: 2412
 - 91% of licenses are public draw on public land.

PRONGHORN Hunting opportunities currently being issued through A-PLUS

- Current Private
 - No private-land hunts
- Current Public (archery)
 - Draw licenses: 25
- **Total Current Opportunity: 25**

PRONGHORN PROPOSED

- Proposed Private (archery)
 - *Expected new: 10*
- Proposed Public (archery)
 - *Proposed: 25**
- **Total Expected Opportunity: 35**



PROPOSED PUBLIC HUNT STRUCTURE				
Hunt	Date	Duration	Licenses	Bag
Youth*	3 rd or 4 th Sat. in Aug.	3 days	NA	
Archery	1 st or 2 nd Sat. in Aug.	9 days	25	MB
1st Rifle	3rd or 4th Sat. in Aug.	3 days	NA	
2nd Rifle	4th or 5th Sat. in Aug.	3 days	NA	
MIP	4 th or 5 th Sat. in Aug.	3 days	NA	
3rd Rifle	Last Sat. in Sept. OR mid-week in Aug.	3 days	NA	
Total			25	

GMU 31

Publicly accessible land: 47%

DEER

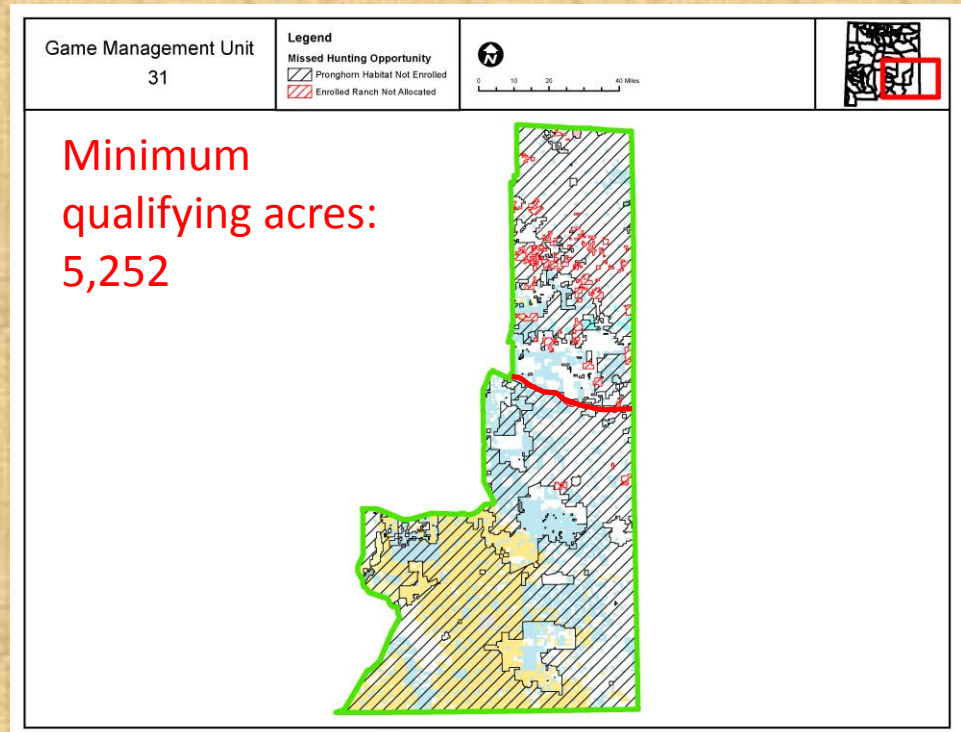
- Private licenses: 420
- Public draw licenses: 1328
 - 76% of licenses are public draw on public land.

PRONGHORN Hunting opportunities currently being issued through A-PLUS

- Current Private (rifle)
 - Allocated: 92
 - **Unconverted: 31**
 - **Converted: 61**
- Current Public (rifle)
 - Draw licenses: 62
- **Total Current Opportunity: 123**

PRONGHORN PROPOSED

- Proposed Private (rifle)
 - **Expected new: 90**
- Proposed Public (rifle)
 - **Proposed: 70***
- **Total Expected Opportunity: 160**

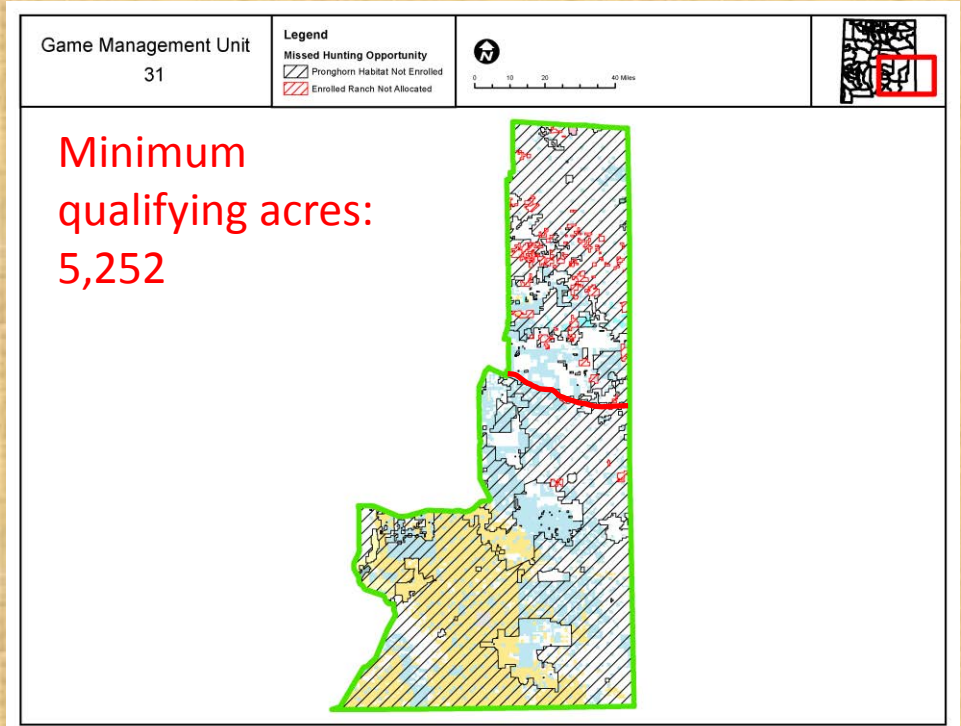


- **Border split proposed: US HWY 380**

GMU 31 North

PRONGHORN PROPOSED

- Proposed Public (rifle)
 - *Proposed: 30**

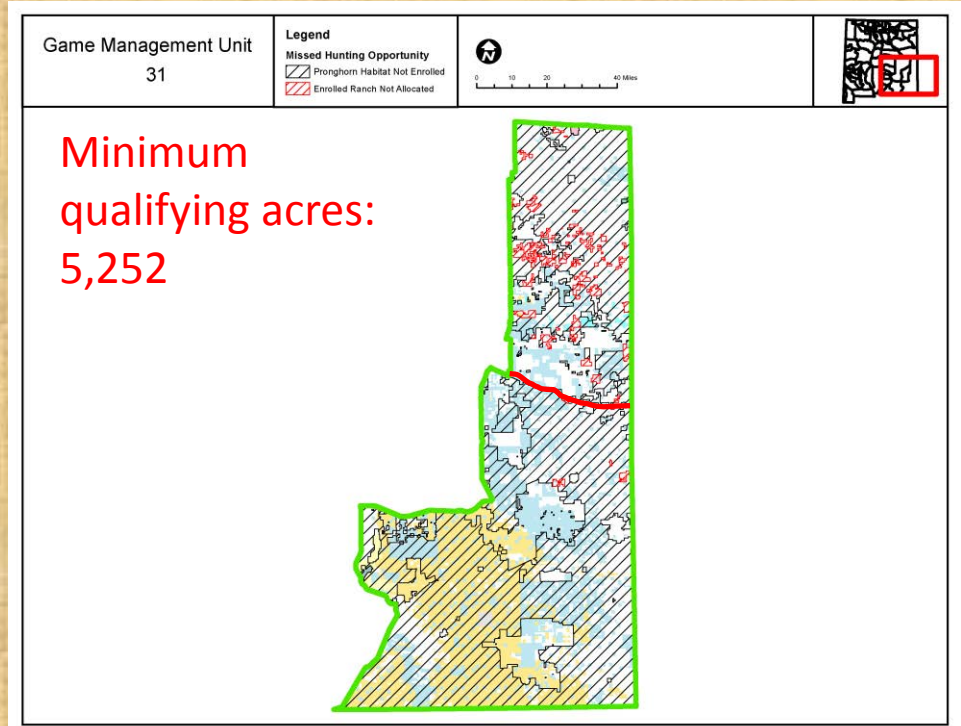


PROPOSED PUBLIC HUNT STRUCTURE				
Hunt	Date	Duration	Licenses	Bag
Youth*	3 rd or 4 th Sat. in Aug.	3 days	5	ES
Archery	1 st or 2 nd Sat. in Aug.	9 days	25	MB
1st Rifle	3rd or 4th Sat. in Aug.	3 days	5	MB
2nd Rifle	4th or 5th Sat. in Aug.	3 days	10	MB
MIP	4 th or 5 th Sat. in Aug.	3 days	5	MB
3rd Rifle	Last Sat. in Sept. OR mid-week in Aug.	3 days	15	MB
Subtotal Rifle			30*	MB
Total all Methods			65	

GMU 31 South

PRONGHORN PROPOSED

- Proposed Public (rifle)
 - *Proposed: 40**



PROPOSED PUBLIC HUNT STRUCTURE				
Hunt	Date	Duration	Licenses	Bag
Youth*	3 rd or 4 th Sat. in Aug.	3 days	5	ES
Archery	1 st or 2 nd Sat. in Aug.	9 days	50	MB
1st Rifle	3rd or 4th Sat. in Aug.	3 days	10	MB
2nd Rifle	4th or 5th Sat. in Aug.	3 days	10	MB
MIP	4 th or 5 th Sat. in Aug.	3 days	5	MB
3rd Rifle	Last Sat. in Sept. OR mid-week in Aug.	3 days	20	MB
Subtotal Rifle			40*	MB
Total all Methods			100	

GMU 32

Publicly accessible land: 31%

DEER

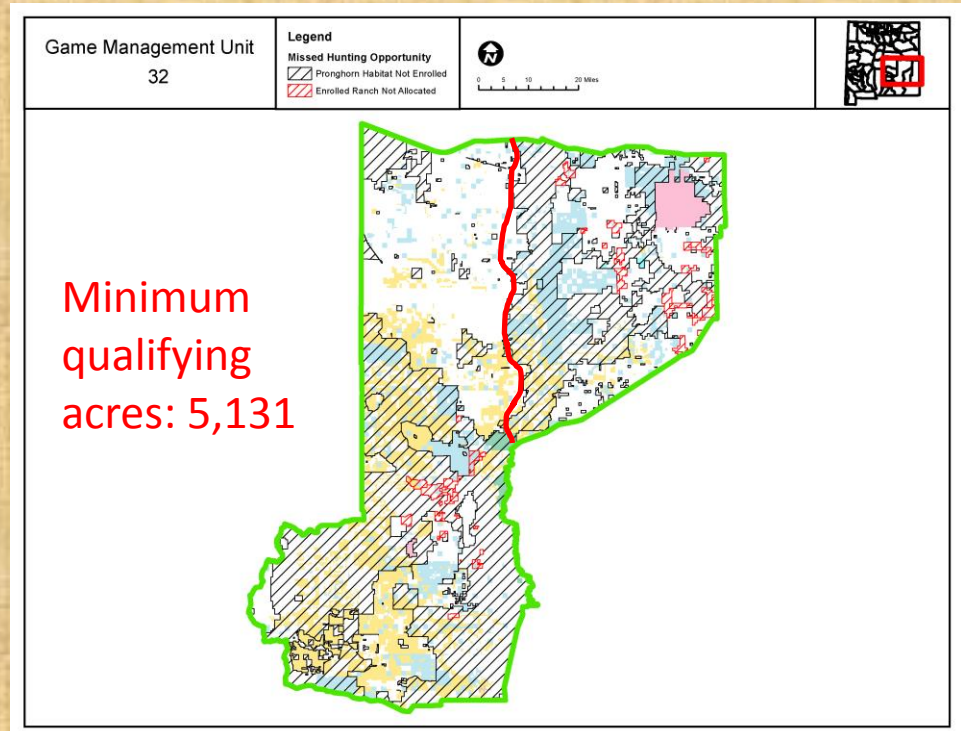
- Private licenses: 432
- Public draw licenses: 1623
 - 79% of licenses are public draw on public land.

PRONGHORN Hunting opportunities currently being issued through A-PLUS

- Current Private (rifle)
 - Allocated: 221
 - **Unconverted: 83**
 - **Converted: 138**
- Current Public (rifle)
 - Draw licenses: 69
- **Total Current Opportunity: 207**

PRONGHORN PROPOSED

- Proposed Private (rifle)
 - **Expected new: 190**
- Proposed Public (rifle)
 - **Proposed: 70***
- **Total Expected Opportunity: 260**

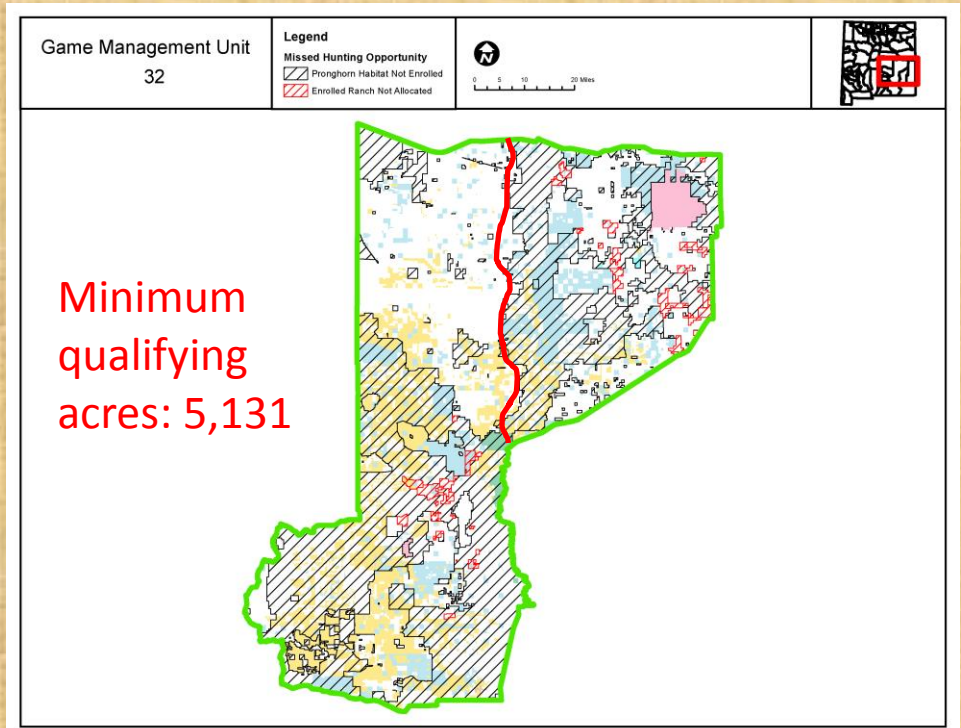


- ***Border split proposed: Pecos River***

GMU 32 East

PRONGHORN PROPOSED

- Proposed Public (rifle)
 - *Proposed: 30**

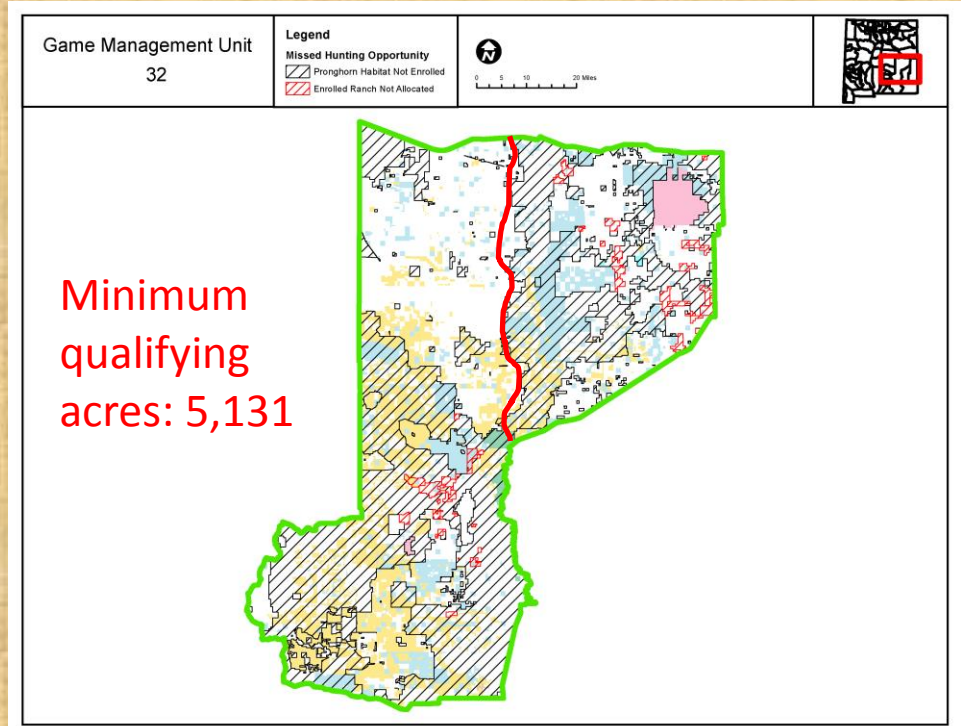


PROPOSED PUBLIC HUNT STRUCTURE				
Hunt	Date	Duration	Licenses	Bag
Youth*	3 rd or 4 th Sat. in Aug.	3 days	5	ES
Archery	1 st or 2 nd Sat. in Aug.	9 days	25	MB
1st Rifle	3rd or 4th Sat. in Aug.	3 days	10	MB
2nd Rifle	4th or 5th Sat. in Aug.	3 days	5	MB
MIP	4 th or 5 th Sat. in Aug.	3 days	5	MB
3rd Rifle	Last Sat. in Sept. OR mid-week in Aug.	3 days	15	MB
Subtotal Rifle			30*	MB
Total all Methods			65	

GMU 32 West

PRONGHORN PROPOSED

- Proposed Public (rifle)
 - *Proposed: 40**



PROPOSED PUBLIC HUNT STRUCTURE				
Hunt	Date	Duration	Licenses	Bag
Youth*	3 rd or 4 th Sat. in Aug.	3 days	NA	
Archery	1 st or 2 nd Sat. in Aug.	9 days	20	MB
1st Rifle	3rd or 4th Sat. in Aug.	3 days	15	MB
2nd Rifle	4th or 5th Sat. in Aug.	3 days	10	MB
MIP	4 th or 5 th Sat. in Aug.	3 days	5	MB
3rd Rifle	Last Sat. in Sept. OR mid-week in Aug.	3 days	15	MB
Subtotal Rifle			40*	MB
Total all Methods			65	

GMU 33

Publicly accessible land: 56%

DEER

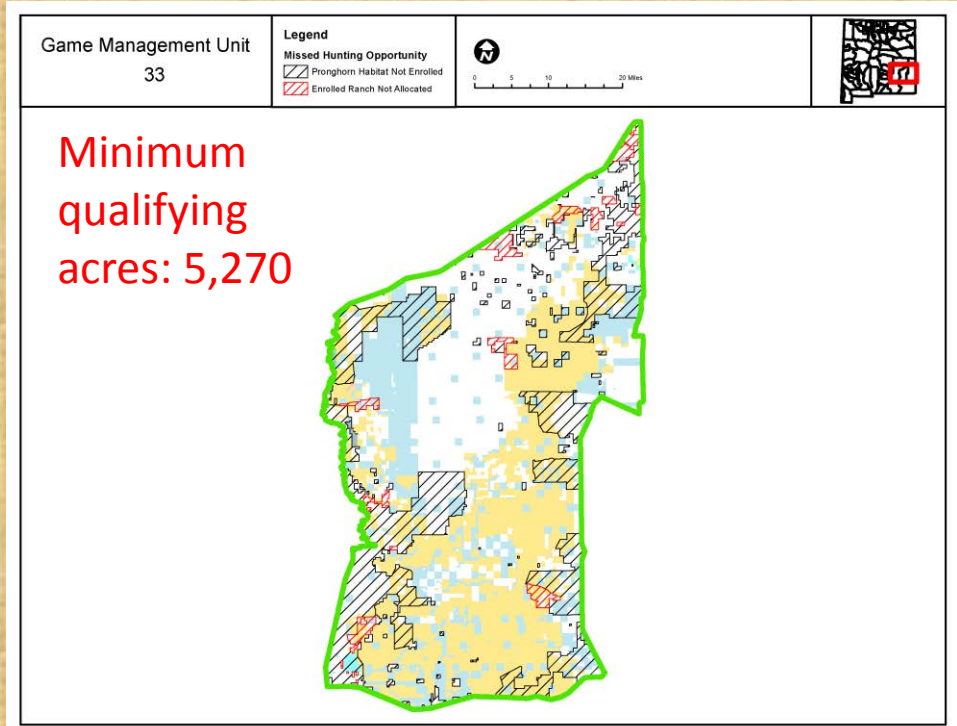
- Private licenses: 561
- Public draw licenses: 131
 - 81% of licenses are public draw on public land.

PRONGHORN Hunting opportunities currently being issued through A-PLUS

- Current Private (rifle)
 - Allocated: 60
 - **Unconverted: 20**
 - **Converted: 40**
- Current Public (rifle)
 - Draw licenses: 55
- **Total Current Opportunity: 95**

PRONGHORN PROPOSED

- Proposed Private (rifle)
 - **Expected new: 45**
- Proposed Public (rifle)
 - **Proposed: 70***
- **Total Expected Opportunity: 115**



PROPOSED PUBLIC HUNT STRUCTURE				
Hunt	Date	Duration	Licenses	Bag
Youth*	Last Sat. in Sept.	3 days	5	ES
Archery	1 st or 2 nd Sat. in Aug.	9 days	30	MB
1st Rifle	3rd or 4th Sat. in Aug.	3 days	25	MB
2nd Rifle	4th or 5th Sat. in Aug.	3 days	20	MB
MIP	4 th or 5 th Sat. in Aug.	3 days	5	MB
3rd Rifle	Last Sat. in Sept. OR mid-week in Aug.	3 days	25	MB
Subtotal Rifle			70*	MB
Total all Methods			110	

GMU 36 and 37

Publicly accessible land: 59%

DEER

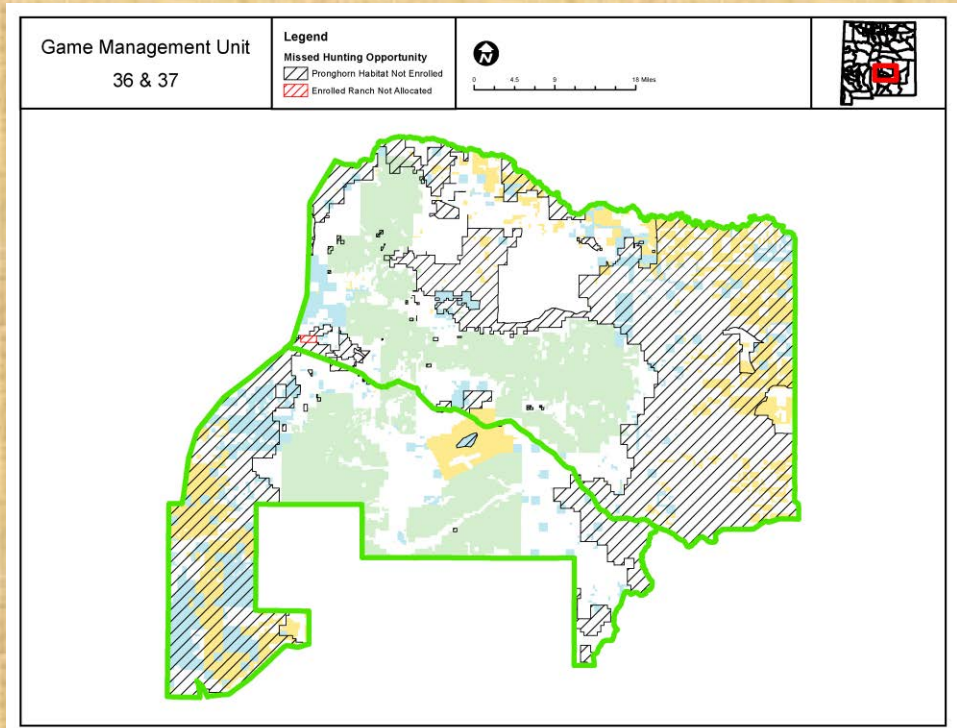
- Private licenses: 551
- Public draw licenses: 2073
 - 79% of licenses are public draw on public land.

PRONGHORN Hunting opportunities currently being issued through A-PLUS

- Current Private (rifle)
 - Allocated: 94
 - **Unconverted: 68**
 - **Converted: 26**
- Current Public (rifle)
 - Draw licenses: 18
- **Total Current Opportunity: 86**

PRONGHORN PROPOSED

- Proposed Private (rifle)
 - **Expected new: 40**
- Proposed Public (rifle)
 - **Proposed: 35***
- **Total Expected Opportunity: 75**



PROPOSED PUBLIC HUNT STRUCTURE				
Hunt	Date	Duration	Licenses	Bag
Youth*	3 rd or 4 th Sat. in Aug.	3 days	5	ES
Archery	1 st or 2 nd Sat. in Aug.	9 days	20	MB
1st Rifle	3rd or 4th Sat. in Aug.	3 days	10	MB
2nd Rifle	4th or 5th Sat. in Aug.	3 days	10	MB
MIP	4 th or 5 th Sat. in Aug.	3 days	5	MB
3rd Rifle	Last Sat. in Sept. OR mid-week in Aug.	3 days	15	MB
Subtotal Rifle			35*	MB
Total all Methods			65	

GMU 38

Publicly accessible land: 30%

DEER

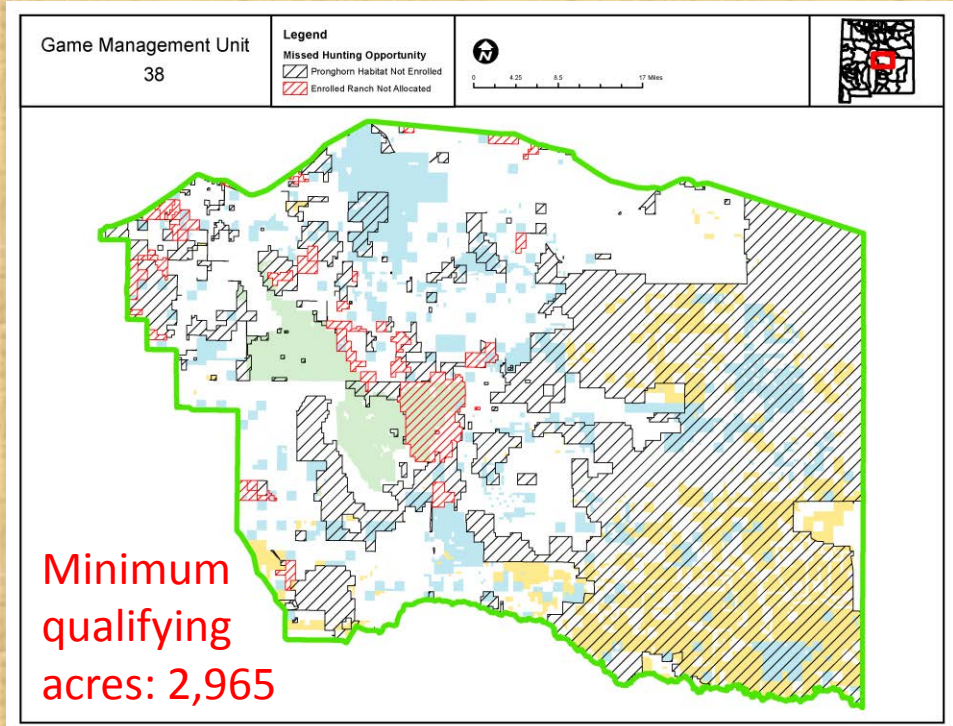
- Private licenses: 105
- Public draw licenses: 553
 - 84% of licenses are public draw on public land.

PRONGHORN Hunting opportunities currently being issued through A-PLUS

- Current Private (rifle)
 - Allocated: 186
 - **Unconverted: 65**
 - **Converted: 121**
- Current Public (rifle)
 - Draw licenses: 39
- **Total Current Opportunity: 160**

PRONGHORN PROPOSED

- Proposed Private (rifle)
 - **Expected new: 135**
- Proposed Public (rifle)
 - **Proposed: 65***
- **Total Expected Opportunity: 200**



PROPOSED PUBLIC HUNT STRUCTURE				
Hunt	Date	Duration	Licenses	Bag
Youth*	3 rd or 4 th Sat. in Aug.	3 days	10	ES
Archery	1 st or 2 nd Sat. in Aug.	9 days	20	MB
1st Rifle	3rd or 4th Sat. in Aug.	3 days	15	MB
2nd Rifle	4th or 5th Sat. in Aug.	3 days	20	MB
MIP	4 th or 5 th Sat. in Aug.	3 days	10	MB
3rd Rifle	Last Sat. in Sept. OR mid-week in Aug.	3 days	30	MB
Subtotal Rifle			65*	MB
Total all Methods			105	

GMU 39

Publicly accessible land: 15%

DEER

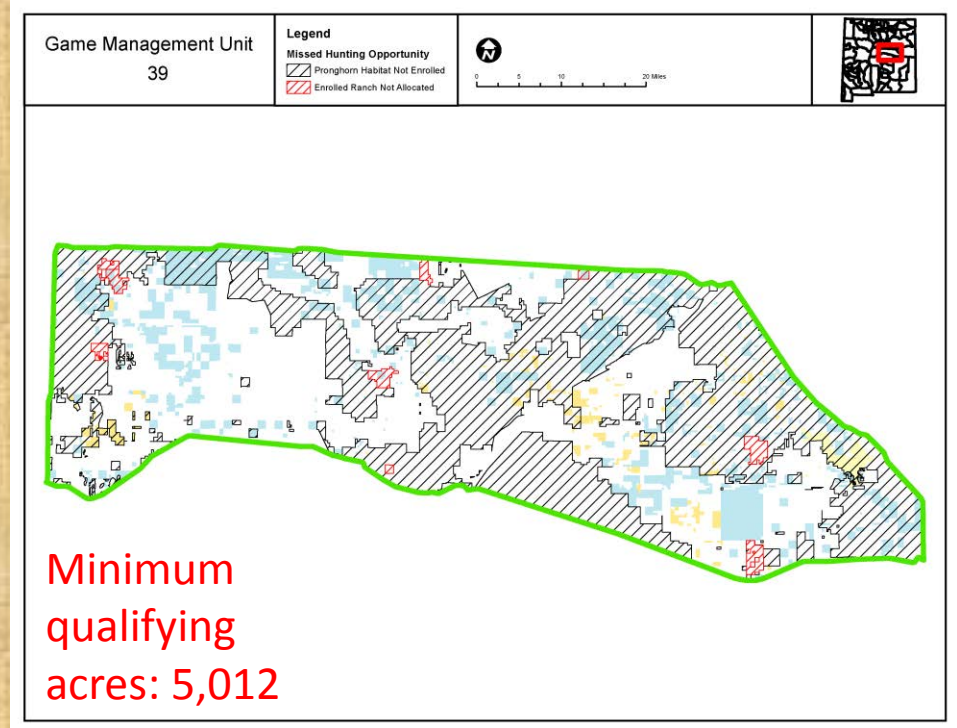
- Private licenses: 150
- Public draw licenses: 150
 - 50% of licenses are public draw on public land.

PRONGHORN Hunting opportunities currently being issued through A-PLUS

- Current Private (rifle)
 - Allocated: 120
 - **Unconverted: 27**
 - **Converted: 93**
- Current Public (rifle)
 - Draw licenses: 26
- **Total Current Opportunity: 119**

PRONGHORN PROPOSED

- Proposed Private (rifle)
 - **Expected new: 120**
- Proposed Public (rifle)
 - **Proposed: 30***
- **Total Expected Opportunity: 150**



PROPOSED PUBLIC HUNT STRUCTURE				
Hunt	Date	Duration	Licenses	Bag
Youth*	3 rd or 4 th Sat. in Aug.	3 days	5	ES
Archery	1 st or 2 nd Sat. in Aug.	9 days	5	MB
1st Rifle	3rd or 4th Sat. in Aug.	3 days	10	MB
2nd Rifle	4th or 5th Sat. in Aug.	3 days	10	MB
MIP	4 th or 5 th Sat. in Aug.	3 days	5	MB
3rd Rifle	Last Sat. in Sept. OR mid-week in Aug.	3 days	10	MB
Subtotal Rifle			30*	MB
Total all Methods			45	

GMU 40

Publicly accessible land: 7%

DEER

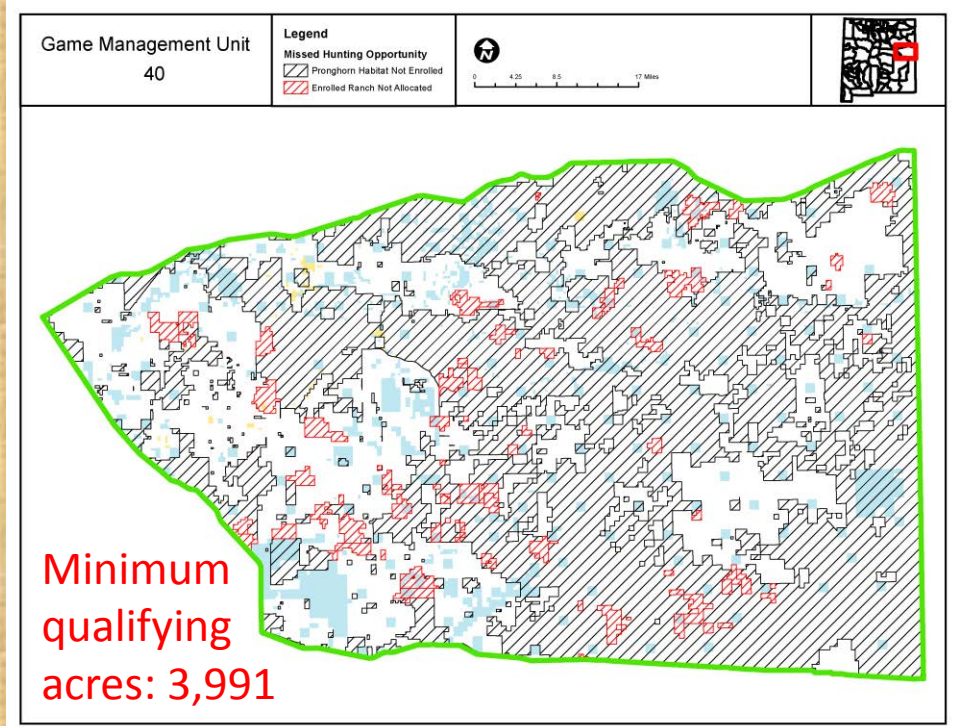
- Private licenses: 209
- Public draw licenses: 152
 - 42% of licenses are public draw on public land.

PRONGHORN Hunting opportunities currently being issued through A-PLUS

- Current Private (rifle)
 - Allocated: 195
 - **Unconverted: 52**
 - **Converted: 143**
- Current Public (rifle)
 - Draw licenses: 18
- **Total Current Opportunity: 161**

PRONGHORN PROPOSED

- Proposed Private (rifle)
 - **Expected new: 240**
- Proposed Public (rifle)
 - **Proposed: 20***
- **Total Expected Opportunity: 260**



PROPOSED PUBLIC HUNT STRUCTURE				
Hunt	Date	Duration	Licenses	Bag
Youth*	3 rd or 4 th Sat. in Aug.	3 days	NA	
Archery	1 st or 2 nd Sat. in Aug.	9 days	5	MB
1st Rifle	3rd or 4th Sat. in Aug.	3 days	10	MB
2nd Rifle	4th or 5th Sat. in Aug.	3 days	NA	
MIP	4 th or 5 th Sat. in Aug.	3 days	5	MB
3rd Rifle	Last Sat. in Sept. OR mid-week in Aug.	3 days	10	MB
Subtotal Rifle			20*	MB
Total all Methods			30	

NW

GMU 2, 7, 9, 10

Publicly accessible land: 57%

DEER

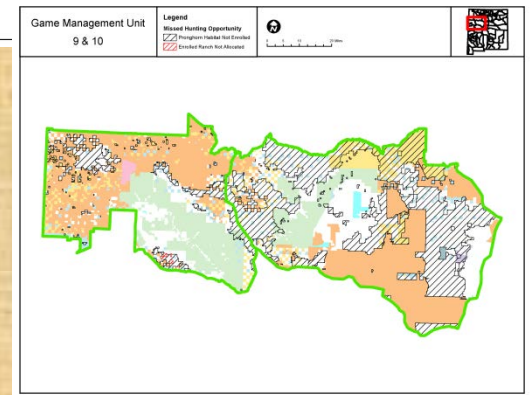
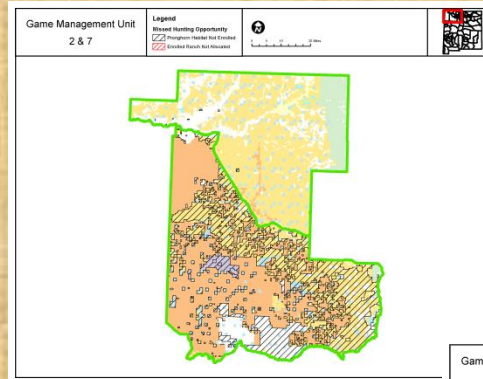
- Private licenses: 230
- Public draw licenses: 2325
 - 91% of licenses are public draw on public land.

PRONGHORN Hunting opportunities currently being issued through A-PLUS

- Current Private (rifle)
 - Allocated: 2
 - **Unconverted: 2**
 - **Converted: 0**
- Current Public (rifle)
 - Draw licenses: 2
- **Total Current Opportunity: 4**

PRONGHORN PROPOSED

- Proposed Private (rifle)
 - **Expected new: 10**
- Proposed Public (rifle)
 - **Proposed: 15***
- **Total Expected Opportunity: 25**



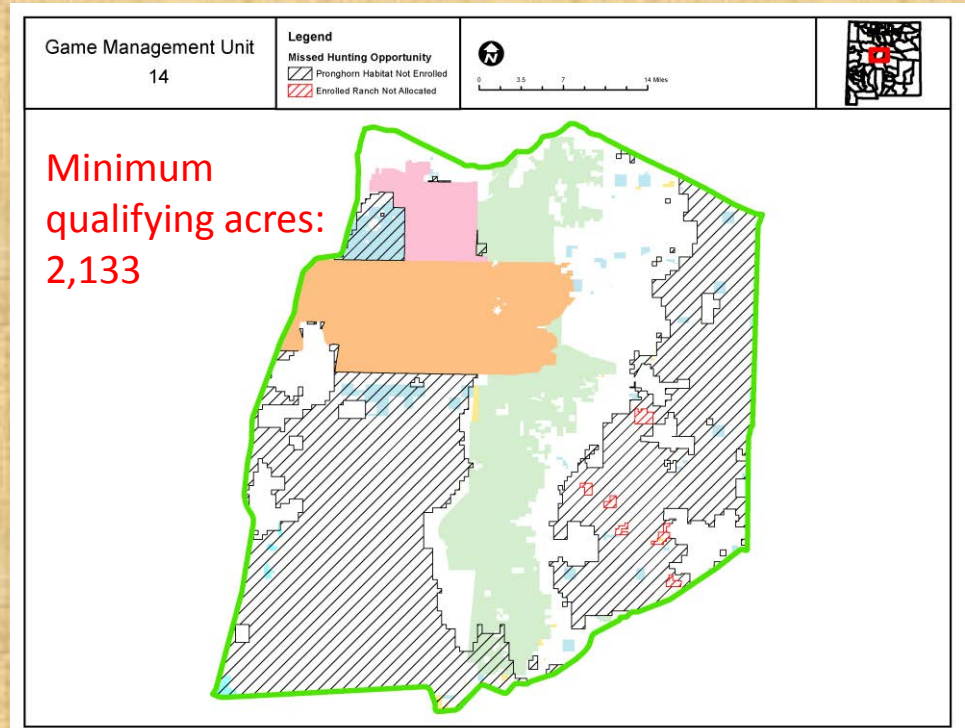
PROPOSED PUBLIC HUNT STRUCTURE				
Hunt	Date	Duration	Licenses	Bag
Youth*	3 rd or 4 th Sat. in Aug.	3 days	3	ES
Archery	1 st or 2 nd Sat. in Aug.	9 days	15	MB
1st Rifle	3rd or 4th Sat. in Aug.	3 days	15	MB
2nd Rifle	4th or 5th Sat. in Aug.	3 days	NA	
MIP	4 th or 5 th Sat. in Aug.	3 days	NA	
3rd Rifle	Last Sat. in Sept. OR mid-week in Aug.	3 days	NA	
Subtotal Rifle			15*	MB
Total all Methods			33	

GMU 14

- No public draw hunt
- Hunt date to match public hunt dates in surrounding GMUs

PRONGHORN

- Current private (rifle):
 - Allocated: 11
 - Converted: 9
 - Unconverted: 2
- Expected private (rifle):
 - ~20 licenses



PROPOSED HUNT STRUCTURE			
Hunt	Date	Duration	Bag
Youth*	3 rd or 4 th Sat. in Aug.	3 days	ES
Archery	1 st or 2 nd Sat. in Aug.	9 days	MB
1st Rifle	3rd or 4th Sat. in Aug.	3 days	MB
2nd Rifle	4th or 5th Sat. in Aug.	3 days	MB
MIP	4 th or 5 th Sat. in Aug.	3 days	MB
3rd Rifle	Last Sat. in Sept. OR mid-week in Aug.	3 days	MB
Total			

SW

GMU 12

Publicly accessible land: 37%

DEER

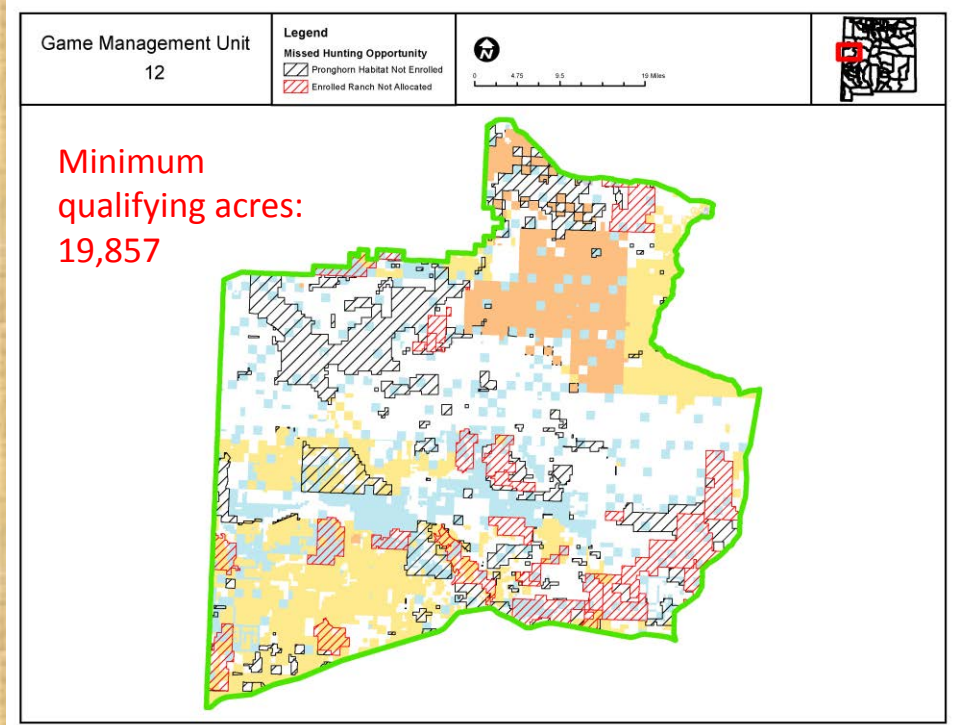
- Private licenses: 95
- Public draw licenses: 161
 - 63% of licenses are public draw on public land.

PRONGHORN Hunting opportunities currently being issued through A-PLUS

- Current Private (rifle)
 - Allocated: 12
 - **Unconverted: 2**
 - **Converted: 10**
- Current Public (rifle)
 - Draw licenses: 10
- **Total Current Opportunity: 20**

PRONGHORN PROPOSED

- Proposed Private (rifle)
 - **Expected new: 40**
- Proposed Public (rifle)
 - **Proposed: 20***
- **Total Expected Opportunity: 60**



PROPOSED PUBLIC HUNT STRUCTURE				
Hunt	Date	Duration	Licenses	Bag
Youth*	3 rd or 4 th Sat. in Aug.	3 days	3	ES
Archery	1 st or 2 nd Sat. in Aug.	9 days	10	MB
1st Rifle	3rd or 4th Sat. in Aug.	3 days	10	MB
2nd Rifle	4th or 5th Sat. in Aug.	3 days	NA	MB
MIP	4 th or 5 th Sat. in Aug.	3 days	10	MB
3rd Rifle	Last Sat. in Sept. OR mid-week in Aug.	3 days	10	MB
Subtotal Rifle			20*	MB
Total all Methods			43	

GMU 13

Publicly accessible land: 36%

DEER

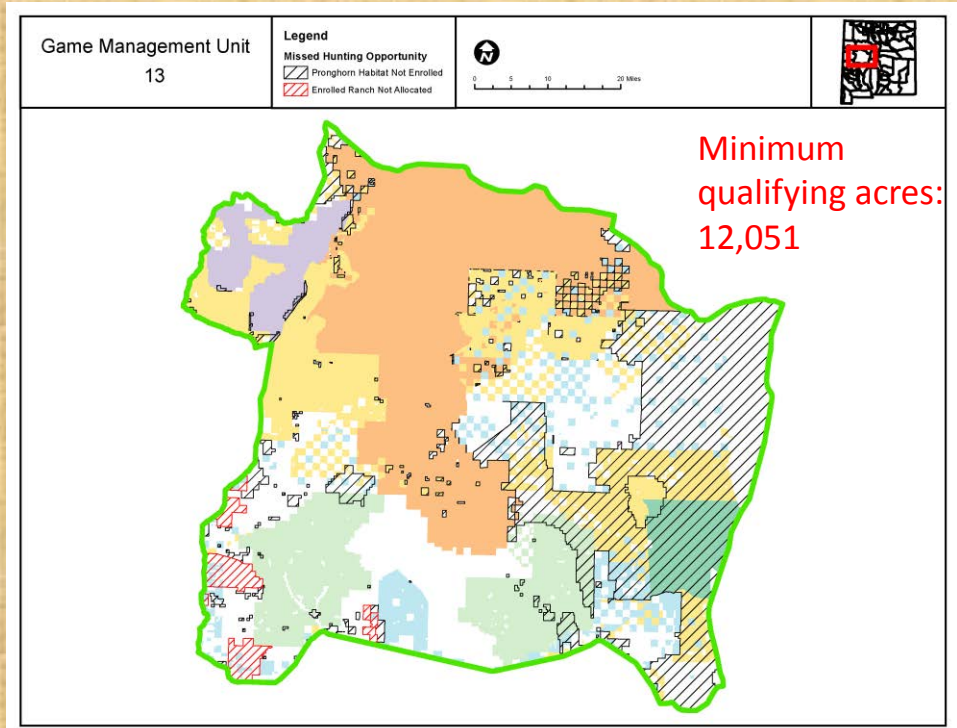
- Private licenses: 57
- Public draw licenses: 753
 - 93% of licenses are public draw on public land.

PRONGHORN Hunting opportunities currently being issued through A-PLUS

- Current Private (rifle)
 - Allocated: 15
 - **Unconverted: 8**
 - **Converted: 7**
- Current Public (rifle)
 - Draw licenses: 14
- **Total Current Opportunity: 21**

PRONGHORN PROPOSED

- Proposed Private (rifle)
 - **Expected new: 10**
- Proposed Public (rifle)
 - **Proposed: 15***
- **Total Expected Opportunity: 25**



PROPOSED PUBLIC HUNT STRUCTURE				
Hunt	Date	Duration	Licenses	Bag
Youth*	3 rd or 4 th Sat. in Aug.	3 days	2	ES
Archery	1 st or 2 nd Sat. in Aug.	9 days	10	MB
1st Rifle	3rd or 4th Sat. in Aug.	3 days	10	MB
2nd Rifle	4th or 5th Sat. in Aug.	3 days	NA	
MIP	4 th or 5 th Sat. in Aug.	3 days	10	MB
3rd Rifle	Last Sat. in Sept. OR mid-week in Aug.	3 days	5	MB
Subtotal Rifle			15*	MB
Total all Methods			27	

GMU 15

Publicly accessible land: 77%

DEER

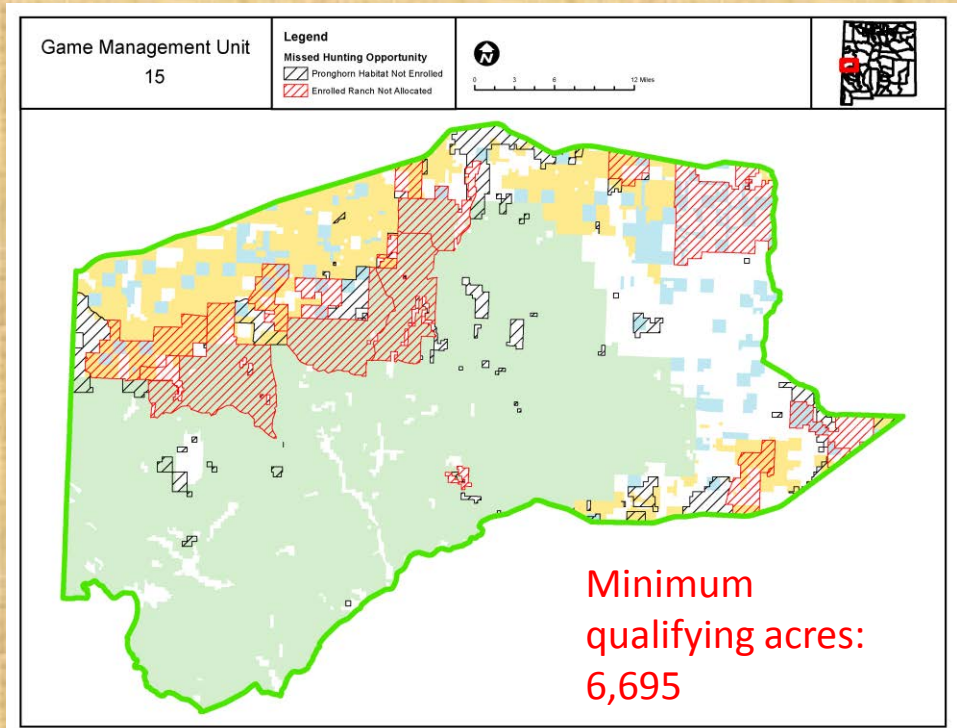
- Private licenses: 15
- Public draw licenses: 366
 - 93% of licenses are public draw on public land.

PRONGHORN Hunting opportunities currently being issued through A-PLUS

- Current Private (rifle)
 - Allocated: 8
 - **Unconverted: 2**
 - **Converted: 6**
- Current Public (rifle)
 - Draw licenses: 10
- **Total Current Opportunity: 16**

PRONGHORN PROPOSED

- Proposed Private (rifle)
 - **Expected new: 15**
- Proposed Public (rifle)
 - **Proposed: 20***
- **Total Expected Opportunity: 35**



PROPOSED PUBLIC HUNT STRUCTURE				
Hunt	Date	Duration	Licenses	Bag
Youth*	3 rd or 4 th Sat. in Aug.	3 days	5	ES
Archery	1 st or 2 nd Sat. in Aug.	9 days	20	MB
1st Rifle	3rd or 4th Sat. in Aug.	3 days	5	MB
2nd Rifle	4th or 5th Sat. in Aug.	3 days	5	MB
MIP	4 th or 5 th Sat. in Aug.	3 days	3	MB
3rd Rifle	Last Sat. in Sept. OR mid-week in Aug.	3 days	10	MB
Subtotal Rifle			20*	MB
Total all Methods			48	

GMU 16

Publicly accessible land: 83%

DEER

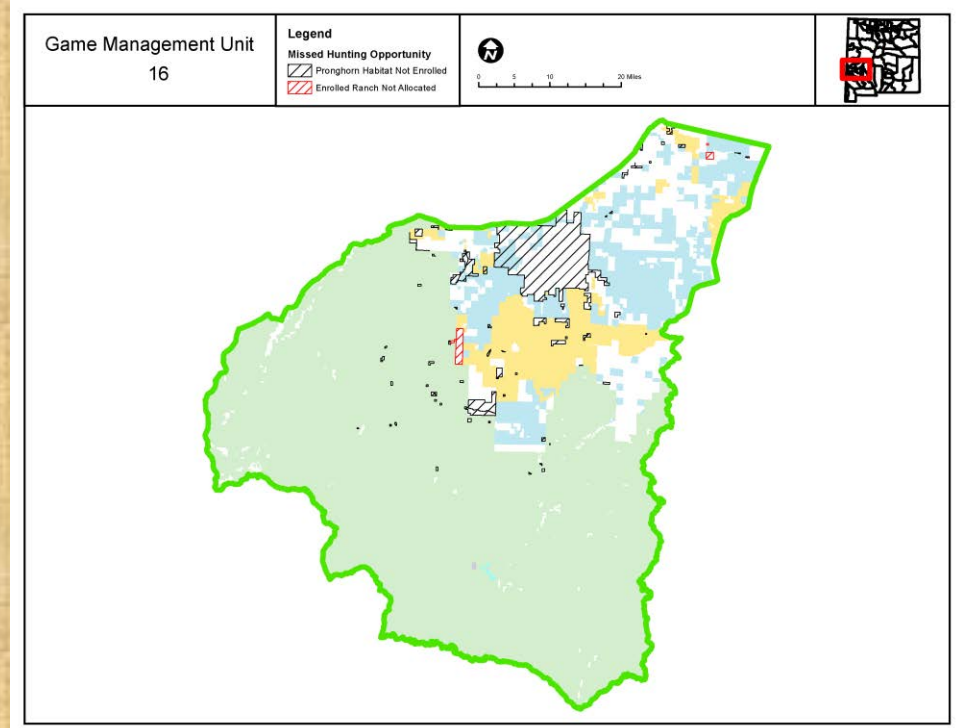
- Private licenses: 30
- Public draw licenses: 1423
 - 98% of licenses are public draw on public land.

PRONGHORN Hunting opportunities currently being issued through A-PLUS

- Current Private (rifle)
 - Allocated: 44
 - **Unconverted: 1**
 - **Converted: 43**
- Current Public (rifle)
 - Draw licenses: 54
- **Total Current Opportunity: 97**

PRONGHORN PROPOSED

- Proposed Private (rifle)
 - **Expected new: 55**
- Proposed Public (rifle)
 - **Proposed: 40***
- **Total Expected Opportunity: 95**



PROPOSED PUBLIC HUNT STRUCTURE				
Hunt	Date	Duration	Licenses	Bag
Youth*	3 rd or 4 th Sat. in Aug.	3 days	5	ES
Archery	1 st or 2 nd Sat. in Aug.	9 days	20	MB
1st Rifle	3rd or 4th Sat. in Aug.	3 days	10	MB
2nd Rifle	4th or 5th Sat. in Aug.	3 days	10	MB
MIP	4 th or 5 th Sat. in Aug.	3 days	3	MB
3rd Rifle	Last Sat. in Sept. OR mid-week in Aug.	3 days	20	MB
Subtotal Rifle			40*	MB
Total all Methods			68	

GMU 17

Publicly accessible land: 73%

DEER

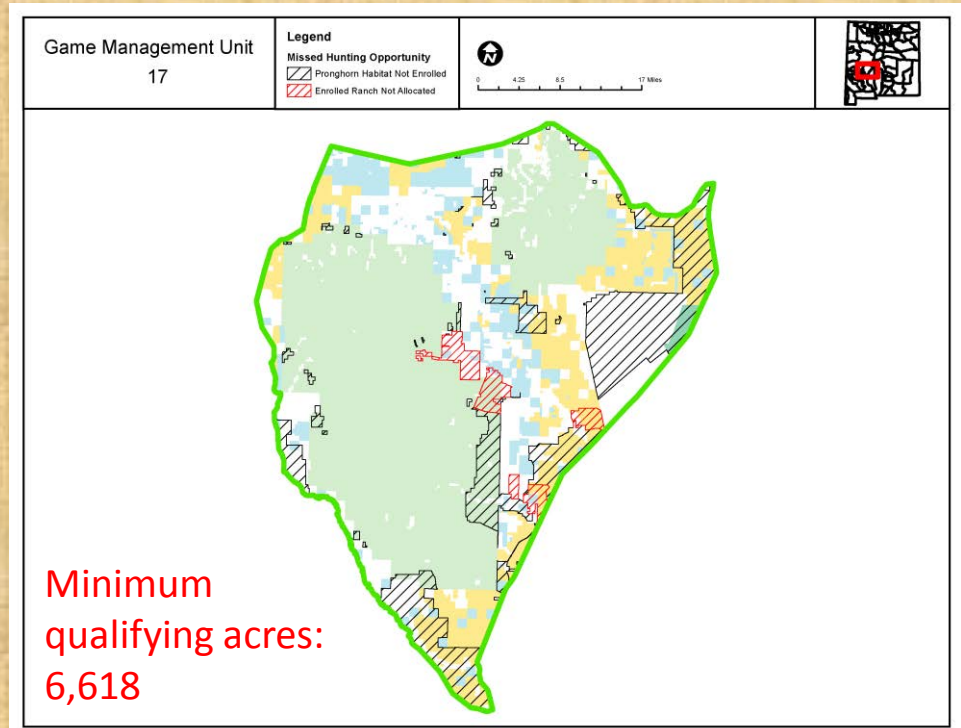
- Private licenses: 98
- Public draw licenses: 456
 - 98% of licenses are public draw on public land.

PRONGHORN Hunting opportunities currently being issued through A-PLUS

- Current Private (rifle)
 - Allocated: 15
 - **Unconverted: 0**
 - **Converted: 15**
- Current Public (rifle)
 - Draw licenses: 13
- **Total Current Opportunity: 28**

PRONGHORN PROPOSED

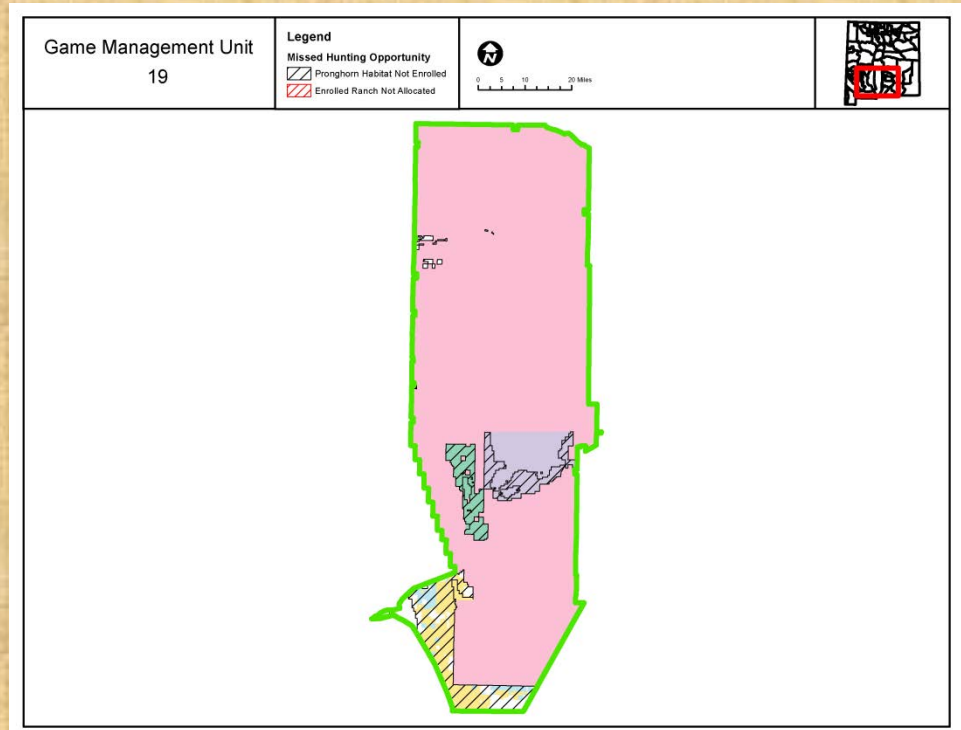
- Proposed Private (rifle)
 - **Expected new: 20**
- Proposed Public (rifle)
 - **Proposed: 20***
- **Total Expected Opportunity: 40**



PROPOSED PUBLIC HUNT STRUCTURE				
Hunt	Date	Duration	Licenses	Bag
Youth*	3 rd or 4 th Sat. in Aug.	3 days	5	ES
Archery	1 st or 2 nd Sat. in Aug.	9 days	20	MB
1st Rifle	3rd or 4th Sat. in Aug.	3 days	5	MB
2nd Rifle	4th or 5th Sat. in Aug.	3 days	5	MB
MIP	4 th or 5 th Sat. in Aug.	3 days	3	MB
3rd Rifle	Last Sat. in Sept. OR mid-week in Aug.	3 days	10	MB
Subtotal Rifle			20*	MB
Total all Methods			48	

GMU 19

- White Sands Missile Range
 - NMDGF and Dept. of Defense coordinate public hunting
- No proposed change to hunt structure and tag allocations



PROPOSED PUBLIC HUNT STRUCTURE				
Hunt	Date	Duration	Licenses	Bag
Youth*	Starting on a Weekend in October	3 days	5	ES
Archery	1 st or 2 nd Sat. in Aug.	9 days	NA	
1st Rifle	3rd or 4th Sat. in Aug.	3 days	NA	
2nd Rifle	4th or 5th Sat. in Aug.	3 days	NA	
MIP	4 th or 5 th Sat. in Aug.	3 days	NA	
3rd Rifle	Last Sat. in Sept. OR mid-week in Aug.	3 days	NA	
Total			5	

GMU 20

Publicly accessible land: 64%

DEER

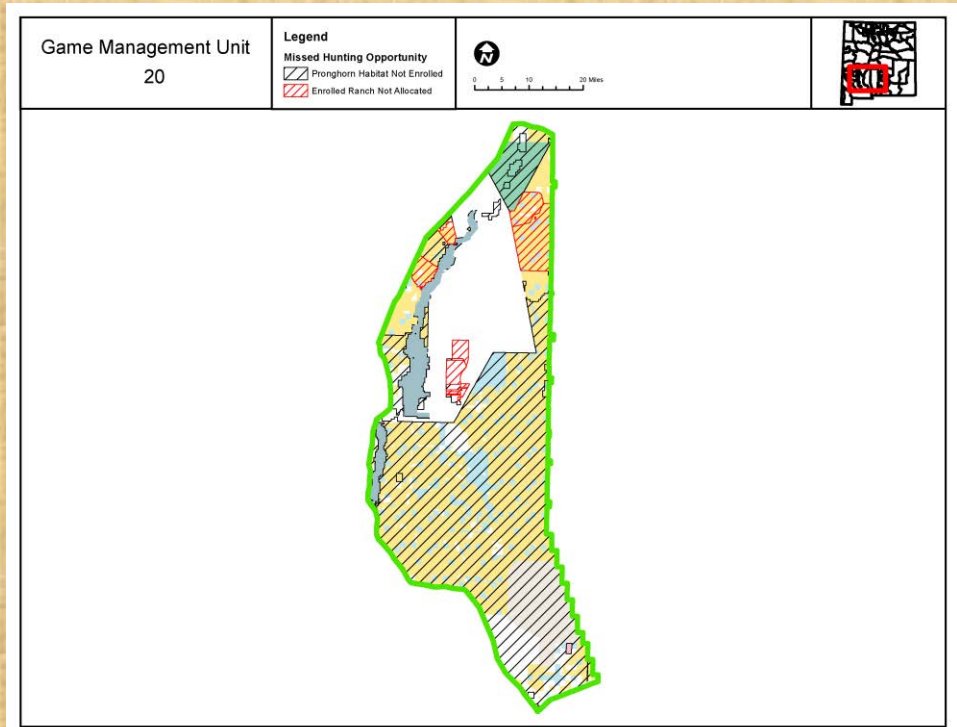
- Private licenses: 13
- Public draw licenses: 387
 - 98% of licenses are public draw on public land.

PRONGHORN Hunting opportunities currently being issued through A-PLUS

- Current Private (rifle)
 - Allocated: 15
 - **Unconverted: 14**
 - **Converted: 1**
- Current Public (rifle)
 - Draw licenses: 3
- **Total Current Opportunity: 4**

PRONGHORN PROPOSED

- Proposed Private (rifle)
 - **Expected new: 5**
- Proposed Public (rifle)
 - **Proposed: 10***
- **Total Expected Opportunity: 15**



PROPOSED PUBLIC HUNT STRUCTURE				
Hunt	Date	Duration	Licenses	Bag
Youth*	3 rd or 4 th Sat. in Aug.	3 days	2	ES
Archery	1 st or 2 nd Sat. in Aug.	9 days	10	MB
1st Rifle	3rd or 4th Sat. in Aug.	3 days	NA	
2nd Rifle	4th or 5th Sat. in Aug.	3 days	10	MB
MIP	4 th or 5 th Sat. in Aug.	3 days	NA	
3rd Rifle	Last Sat. in Sept. OR mid-week in Aug.	3 days	NA	
Subtotal Rifle			10*	MB
Total all Methods			22	

GMU 21 & 24

Publicly accessible land: 71%

DEER

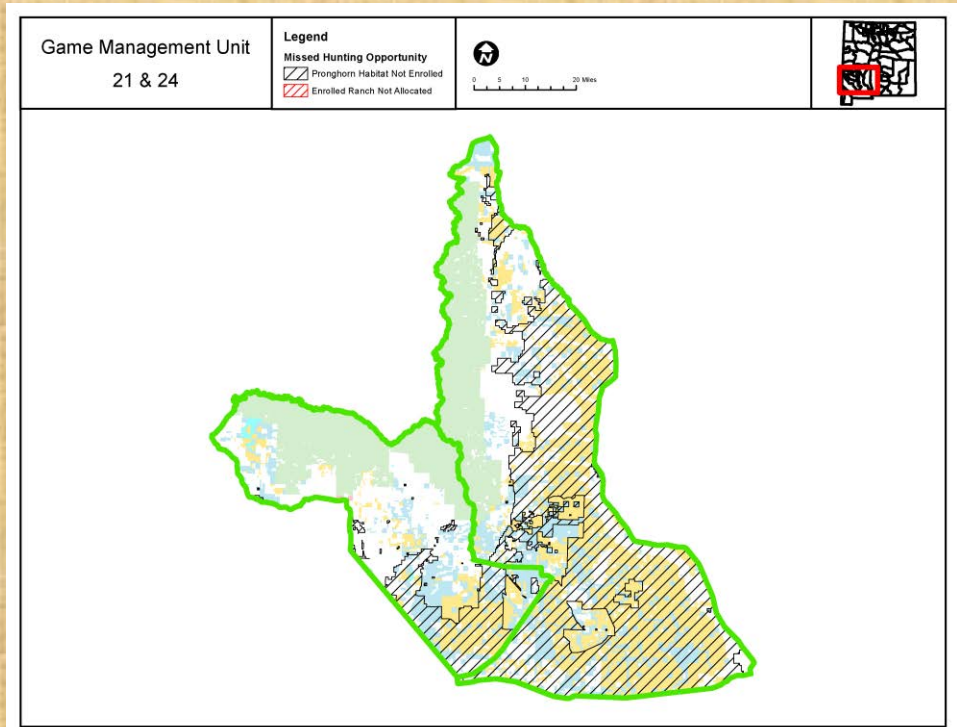
- Private licenses: 236
- Public draw licenses: 3705
 - 94% of licenses are public draw on public land.

PRONGHORN Hunting opportunities currently being issued through A-PLUS

- Current Private (rifle)
 - Allocated: 13
 - **Unconverted: 3**
 - **Converted: 10**
- Current Public (rifle)
 - Draw licenses: 12
- **Total Current Opportunity: 22**

PRONGHORN PROPOSED

- Proposed Private (rifle)
 - **Expected new: 15**
- Proposed Public (rifle)
 - **Proposed: 30***
- **Total Expected Opportunity: 45**



PROPOSED PUBLIC HUNT STRUCTURE				
Hunt	Date	Duration	Licenses	Bag
Youth*	3 rd or 4 th Sat. in Aug.	3 days	10	ES
Archery	1 st or 2 nd Sat. in Aug.	9 days	25	MB
1st Rifle	3rd or 4th Sat. in Aug.	3 days	5	MB
2nd Rifle	4th or 5th Sat. in Aug.	3 days	10	MB
MIP	4 th or 5 th Sat. in Aug.	3 days	8	MB
3rd Rifle	Last Sat. in Sept. OR mid-week in Aug.	3 days	15	MB
Subtotal Rifle			30*	MB
Total all Methods			73	

GMU 22 & 23

Publicly accessible land: 66%

DEER

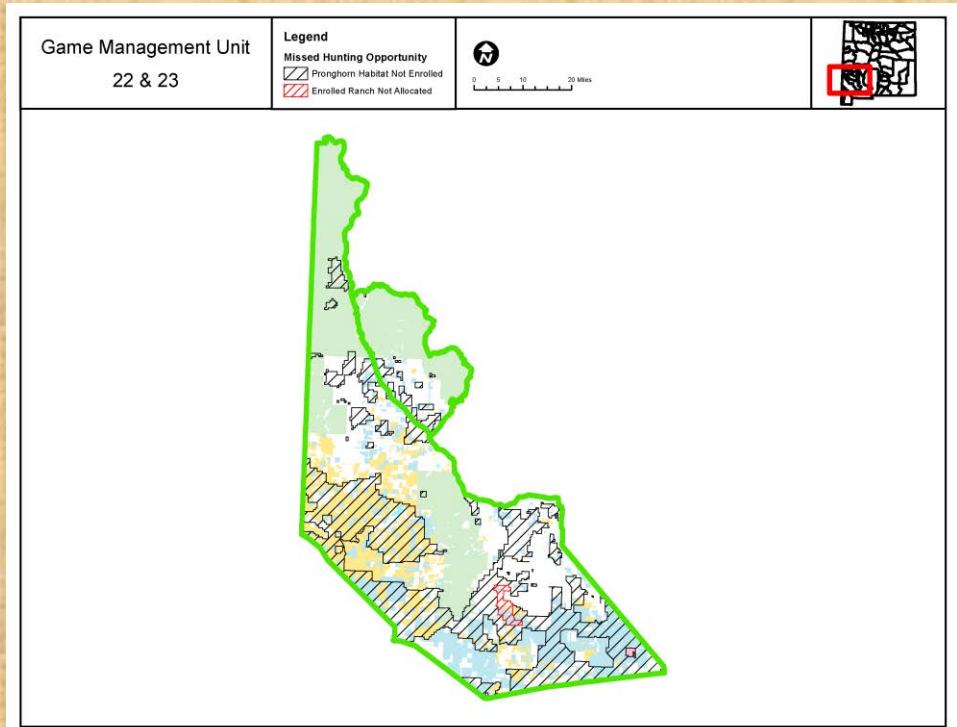
- Private licenses: 96
- Public draw licenses: 1499
 - 94% of licenses are public draw on public land.

PRONGHORN Hunting opportunities currently being issued through A-PLUS

- Current Private (rifle)
 - Allocated: 16
 - **Unconverted: 1**
 - **Converted: 15**
- Current Public (rifle)
 - Draw licenses: 11
- **Total Current Opportunity: 25**

PRONGHORN PROPOSED

- Proposed Private (rifle)
 - **Expected new: 25**
- Proposed Public (rifle)
 - **Proposed: 15***
- **Total Expected Opportunity: 40**



PROPOSED PUBLIC HUNT STRUCTURE				
Hunt	Date	Duration	Licenses	Bag
Youth*	3 rd or 4 th Sat. in Aug.	3 days	5	ES
Archery	1 st or 2 nd Sat. in Aug.	9 days	10	MB
1st Rifle	3rd or 4th Sat. in Aug.	3 days	5	MB
2nd Rifle	4th or 5th Sat. in Aug.	3 days	10	
MIP	4 th or 5 th Sat. in Aug.	3 days	3	MB
3rd Rifle	Last Sat. in Sept. OR mid-week in Aug.	3 days	NA	
Subtotal Rifle			15*	MB
Total all Methods			33	

GMU 25, 26 & 27

Publicly accessible land: 65%

DEER

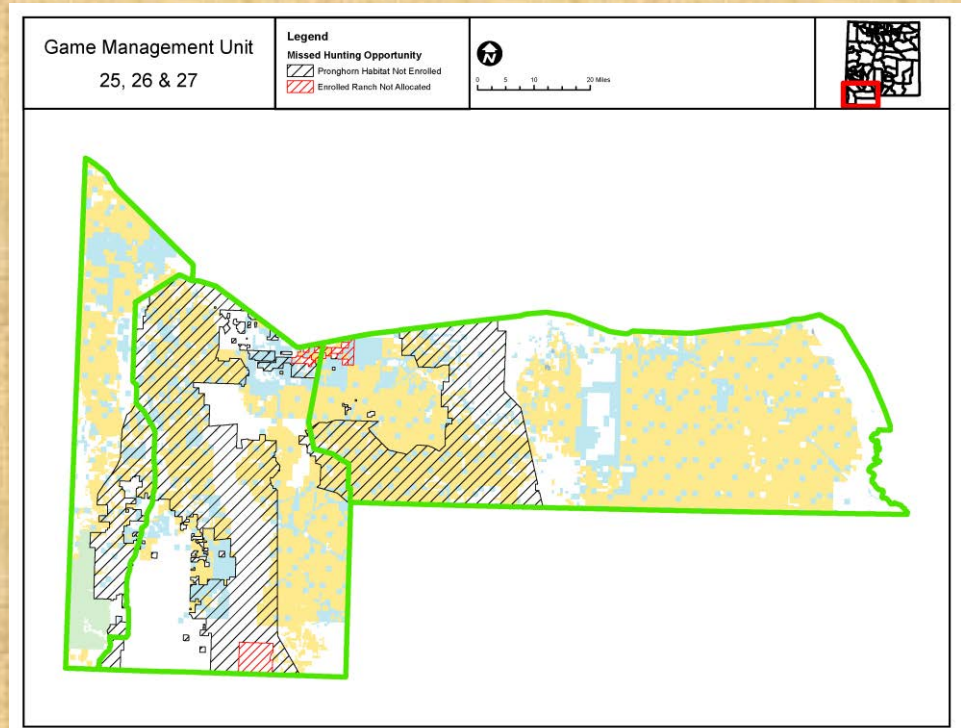
- Private licenses: 77
- Public draw licenses: 1016
 - 93% of licenses are public draw on public land.

PRONGHORN Hunting opportunities currently being issued through A-PLUS

- Current Private (rifle)
 - Allocated: 14
 - **Unconverted: 3**
 - **Converted: 11**
- Current Public (rifle)
 - Draw licenses: 9
- **Total Current Opportunity: 20**

PRONGHORN PROPOSED

- Proposed Private (rifle)
 - **Expected new: 15**
- Proposed Public (rifle)
 - **Proposed: 10***
- **Total Expected Opportunity: 25**



PROPOSED PUBLIC HUNT STRUCTURE				
Hunt	Date	Duration	Licenses	Bag
Youth*	3 rd or 4 th Sat. in Aug.	3 days	5	ES
Archery	1 st or 2 nd Sat. in Aug.	9 days	10	MB
1st Rifle	3rd or 4th Sat. in Aug.	3 days	5	MB
2nd Rifle	4th or 5th Sat. in Aug.	3 days	10	
MIP	4 th or 5 th Sat. in Aug.	3 days	3	MB
3rd Rifle	Last Sat. in Sept. OR mid-week in Aug.	3 days	NA	
Subtotal Rifle			15*	MB
Total all Methods			33	

PRIVATE LAND DEER HUNTING

- Almost exclusively unlimited OTC
 - Exception of 2, 4, & 5A
- Unlimited licenses (during established hunts)
 - Private landowners generally hunt conservatively
 - Observing good buck:doe ratios ($\geq 30:100$) during aerial surveys



PRIVATE LAND DEER HUNTING

	Public	Private
Hunted %	81%	19%
Land status %*	49%	51%
Actual hunted	29,661	6,958

- Statewide deer licenses: 36,619

*excluding tribal, DOD, DOE

