

# Bear and Cougar Rule Development 19.31.11 NMAC



November 21, 2019  
Bear and Cougar Rule  
Roswell, NM

# Bear Comments



- **As of November 19, 2019: 277 comments**
- **The proposals most commonly commented upon were:**
  - **No change in bear harvest limits**
  - **Change the start and end date in BMZs 10, 12, and 13**

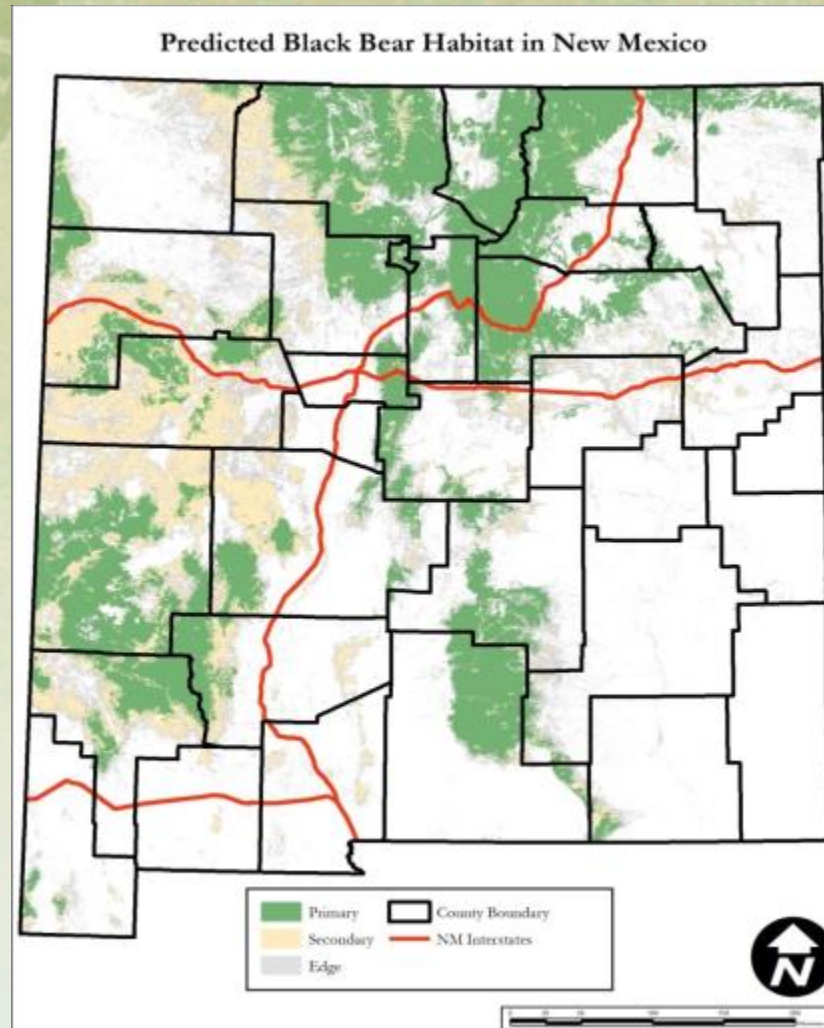
# Bear Proposals



- **Not proposing changes to bear harvest limits**
- **Propose changing the season start and end dates for BMZs 10, 12 and 13**
- **Include Urraca in August draw hunts in NE**

# Habitat Model

Primary habitat = 54,793 km<sup>2</sup>  
(18% of NM)



# Population Information

Mountain Range	Costello et al. (2001) Density Estimates (bears/100 km <sup>2</sup> )	Gould et al. Density Estimate (bears/100 km <sup>2</sup> )
Northern Sangre de Cristo	17.0	21.9*
Southern Sangre de Cristo	17.0	19.7*
Sandia	13.2	18.4†
Northern Sacramento	17.0	20.1†
Southern Sacramento	17.0	16.5*

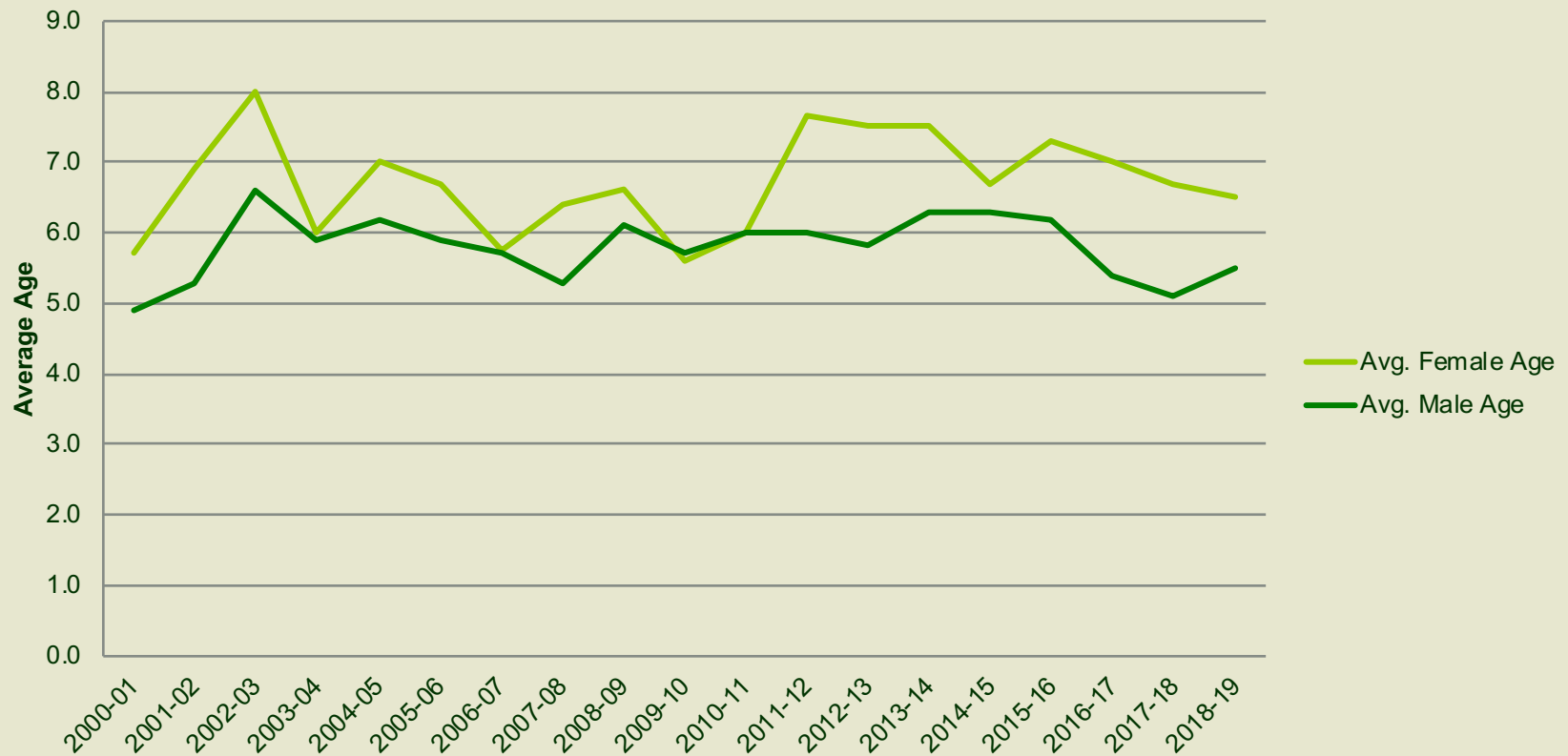
†Gould et al. 2016, \*Gould et al. 2018

# Bear Harvest

Year	Sport Harvest (females)	Max Allowable Harvest	Depredation	Other	Total	# of Zones Closed
2016-17	438 (154)	804	50	13	501	4
2017-18	483 (178)	804	85	56	624	5
2018-19	496 (188)	804	68	36	600	3
<b>AVG</b>	<b>472 (173)</b>	<b>804</b>	<b>68</b>	<b>35</b>	<b>575</b>	<b>4</b>

# Bear Age at Mortality

Average Ages of Bear Mortalities from 2000-2019



# Bear Harvest

Zone	Game Management Units	Estimated Primary black bear habitat (km <sup>2</sup> )	Harvest Limit (Female Harvest Limit)
			2020 – 2024
1	4, 5, 6, 7, 51, 52	9,296	158 (63)
2	2	880	15 (6)
3	49, 50, 53	2,109	65 (26)
4	45, 46, 48	5,778	109 (43)
5	54, 55	4,723	92 (37)
6	39, 40, 41, 42, 43, 47, 59	4,689	33 (13)
7	56, 57, 58	1,645	35 (14)
8	8	719	11 (4)
9	9, 10	2,963	36 (14)
10	12, 13, 15, 16, 17, 18, 20, 21, 22, 23, 24, 26, 27	15,488	146 (58)
11	37, 38	1,811	36 (14)
12	34	2,428	33 (13)
13	36	1,184	16 (6)
14	14	1,267	19 (7)
<b>Totals</b>		<b>54,793</b>	<b>804 (318)</b>



# Cougar Comments



- **As of November 19, 2019: 277 comments**
- **The proposals most commonly commented upon were:**
  - **No longer allow foothold traps and foot snares as a method of take for sport harvest of cougars**
  - **Reduce cougar harvest limits in certain zones**

# Cougar Proposals



- No longer allow traps as a method for sport harvest
- Harvest limit adjustments to align with data
- Adjust Cougar Management Zone L and J; combine B and F

# Cougar: Proposal

## Manner and Method Requirements and Restrictions 19.31.11.10 NMAC

- No longer allow traps and foot snares for sport harvest on private and state trust land
  - Infrequently used method of take
    - 2016 – 2017: 4 trapped (300)
    - 2017 – 2018: 20 trapped (292)
    - 2018 – 2019: 13 trapped(409)

# Cougar Harvest

Year	Sport Harvest (females)	Max Allowable Harvest	Depredation	Other	Total	# of Zones Closed
2016-17	244 (90)	749	21	35	300	2
2017-18	238 (93)	749	20	34	292	5
2018-19	344 (117)	740	25	40	409	4
<b>AVG</b>	<b>275 (100)</b>	<b>746</b>	<b>22</b>	<b>35</b>	<b>331</b>	<b>4</b>

# Cougar Sport Harvest Limits



- Adjustments to harvest limits for zones based on findings from recent NMDGF research and new findings in the literature

# Cougar Sport Harvest Limits

CMZ	Current Total Limit (Female Sub-limit)	Harvest Limit Proposal	Proposed Total Limit (Female Sub-limit)	Additional Proposals
A	42 (13)	No Change	42 (13)	
B	28 (9)	Change*	25 (8)**	Combined with CMZ F
C	84 (42)	Change	57 (17)	
D	23 (11)	Change	15 (5)	
E	50 (15)	Change	42 (13)	
F	46 (23)	Add to CMZ B	Added to CMZ B	Added to CMZ B
G	73 (37)	Change	50 (15)	
H	42 (21)	Change	29 (9)	
I	24 (7)	No Change	24 (7)	
J	89 (27)	Change*	84 (25)	GMU 25 removed
K	66 (33)	Change	45 (14)	
L	19 (10)	Change*	19 (6)	GMU 25 added
M	31 (9)	Change	25 (7)	
N	15 (5)	Change	13 (4)	
O	21 (6)	Change	17 (5)	
P	14 (7)	No Change	14 (7)	
Q	35 (11)	No Change	35 (11)	
R	26 (8)	No Change	26 (8)	
S	25 (13)	Change	17 (5)	

\*CMZ boundary adjustments; \*\* Limits set based upon research conducted in CMZ B and F

# QUESTIONS

