



Wildlife Management Division

Barbary Sheep, Oryx, and Persian Ibex 19.31.12 NMAC

August 23, 2018

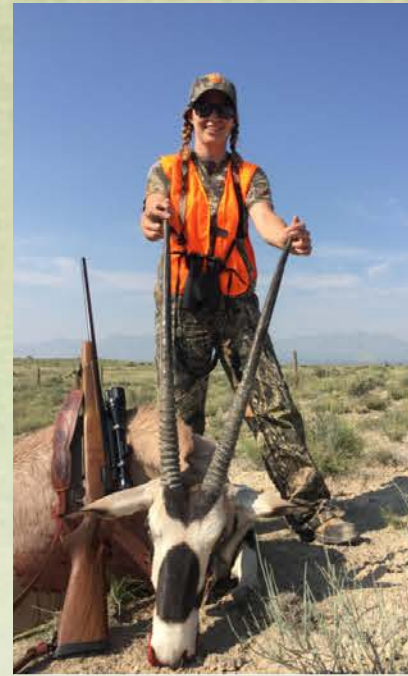
**New Mexico State Game Commission Meeting
Gallup, NM**

Public Comment on 19.31.12 NMAC (oryx)

- **3 public meetings (28 attendees)**
- **34 public comments**
- **Maintain once-in-lifetime (OIL) for oryx (17)**
- **Supportive of non-OIL hunts (10)**
- **Maintain Iraq/Afghanistan designation (3)**
- **More youth opportunities (2)**
- **More veteran opportunities (2)**
- **Support change to all veterans (1)**
- **Increase injured veteran hunt (1)**
- **Against increasing off-range licenses (1)**

Proposed Amendments: Oryx 19.31.12 NMAC

- **Add 4 new on-range hunts to accommodate more hunters**
 - **Increase OIL hunts from 270 → 605**
- **Maintain Iraq/Afghanistan veteran hunt**
 - **Increase licenses from 25 → 45**
- **Maintain youth only***
- **Eliminate Rhodes/Stallion designation**
- **Increase injured veteran hunt from 3 → up to 10 licenses**



Proposed Amendments: Oryx 19.31.12 NMAC

- **Off range**
 - **Increase statewide off range hunts by 33% (600 → 800)**
 - **Increase statewide off range youth hunts by 11% (180 → 200)**



Public Comment on 19.31.12 NMAC (ibex)

- **3 public meetings (28 attendees)**
- **34 public comments**
- **Supportive of increasing F/IM hunts in draw (7)**
- **Not supportive of increase in F/IM hunts (3)**
- **Remove incentive hunt (1)**
- **License fee too high for non residents (1)**

Proposal: Ibex 19.31.12 NMAC

- **Adjust seasons for calendar dates**
- **Increase F/IM draw licenses & add new hunt(s)**
 - **4 F/IM hunts of 75 licenses each**
- **Maintain archery, muzzleloader, & YO hunts**
- **Combine OIL hunt w/incentive hunt**



Public Comment on 19.31.12 NMAC (Barbary sheep)

- **3 public meetings (28 attendees)**
- **34 public comments**
- **Split units out, either each unit separate or keep units combined as they currently are (12)**
- **Supportive of all changes (7)**
- **Too much of an increase in license numbers (6)**
- **Supportive of increasing hunts (3)**
- **Supportive of Oct. hunt (2)**
- **Longer hunts (2)**
- **No changes (2)**
- **Unlimited licenses, 2 month season (1)**
- **Make Oct. an archery hunt (1)**

Proposal: Barbary Sheep

19.31.12 NMAC



- **Increase draw licenses by 37% in response to increasing pop. size**
 - **1,275 → 1,750**
- **Split hunts to distribute hunters (no longer a single month-long season)**

Proposal: Barbary Sheep

19.31.12 NMAC

- **Adjust seasons for calendar dates**
- **Maintain split units**
 - **GMUs 29/30**
 - **GMUs 32/24/36/37**
- **Split hunts**



Proposal: Barbary Sheep

19.31.12 NMAC

Hunt dates	# licenses (GMUs 29/30)	# licenses (GMUs 32/34/36/37)
Late Oct. (5 days)	100	75
Early Dec. (14 days)	250	225
Archery, Jan. 1-15	75	75
Late Jan. (14 days)	250	225
Mid Feb. (14 days)	250	225
TOTAL	850	750

- **Increases total hunting days; 28 → 62**

Proposal: Barbary Sheep

19.31.12 NMAC

- **Allow public hunters to hunt on private land in their units w/written permission**
- **Modify description of GMU 34 west side for clarity**
- **Increase McGregor hunts by 33%**





Questions?



Oryx

On Range Hunt Recommendation

	PROPOSED HUNT STRUCTURE				
	Once in Life ¹	ES ^x	BH ^x	Veteran ¹	Total
Sept. 13-15, 2019	65		15	5	85
Sept. 27-29, 2019 New Date	65		15	5	85
Oct. 25-27, 2019 New Date	65		15	5	85
Nov. 8-10, 2019	65		15	5	85
Dec 6-8 Dec, 2019 New Date	65		15	5	85
Jan. 3-5, 2020	65		15	5	85
Jan. 17-19, 2020	65		15	5	85
Feb. 14-16, 2020	65		15	5	85
Feb. 28-Mar. 1 2020 New Date	65		15	5	85
Oct. 11-13, 2019 (Mobility impaired)	20				20
Oct. 11-13, 2019 (Youth only)		40			40
TOTAL	605	40	135	45	825

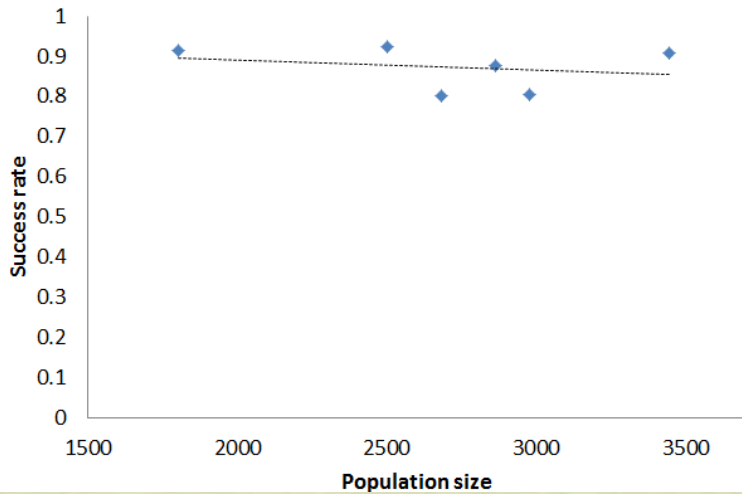
	EXISTING DRAW 2018-2019				
	Once in Life ¹	ES ^x	BH ^x	Veteran ¹	Total
Oct. 12-14, 2018	50		25	5	80
Nov. 9-11, 2018	50		25	5	80
Jan. 4-6, 2019	50		25	5	80
Jan. 18-20, 2019	50		25	5	80
Feb. 15-17, 2019	50		25	5	80
Sept. 7-9, 2018 (Mobility impaired)	20				20
Sept. 7-9, 2018 (Youth only)		40			40
TOTAL	270	40	125	25	460

¹ Hunts w/this designation are once-in-a-lifetime

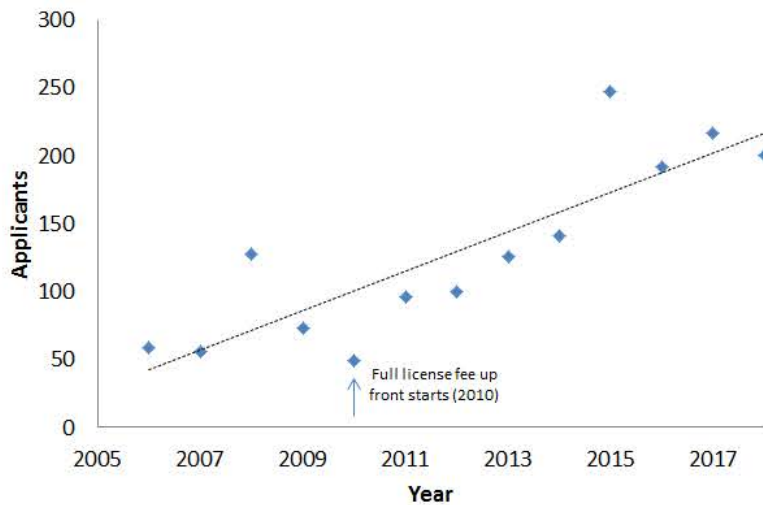
^x Hunts w/this designation are NOT once-in-a lifetime

WSMR Oryx Population & Harvest Data

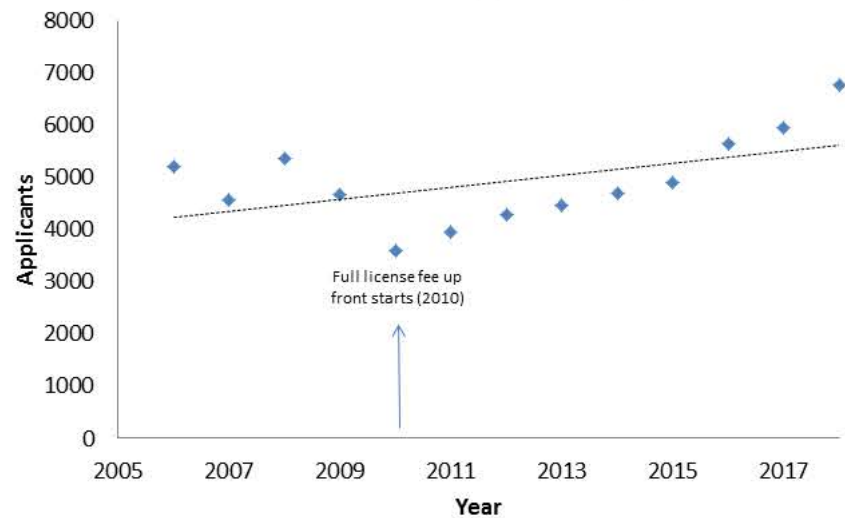
Harvest success rate by population size



Iraq/Afghanistan veteran applicants by year

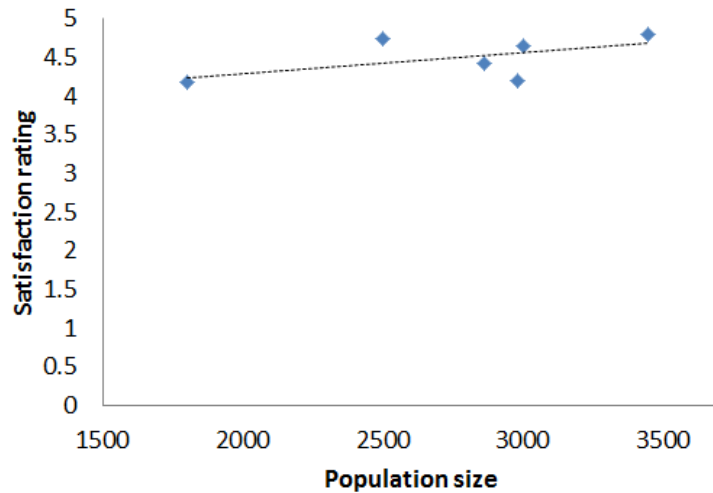


Once-in-a-lifetime applicants/year

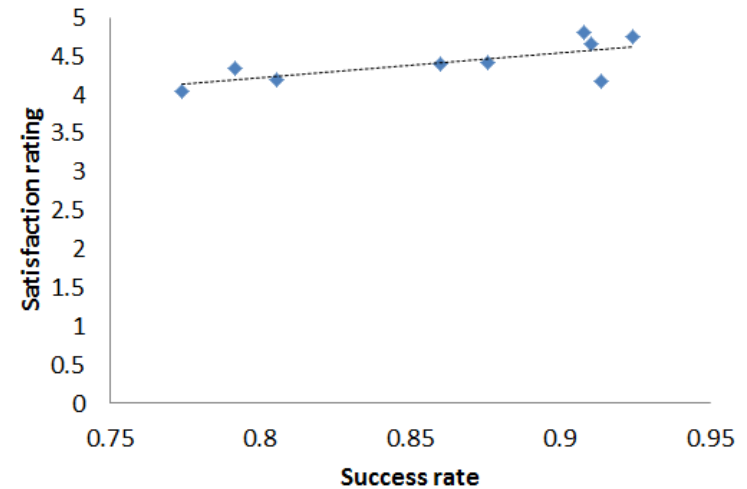


WSMR Oryx Population & Harvest Data

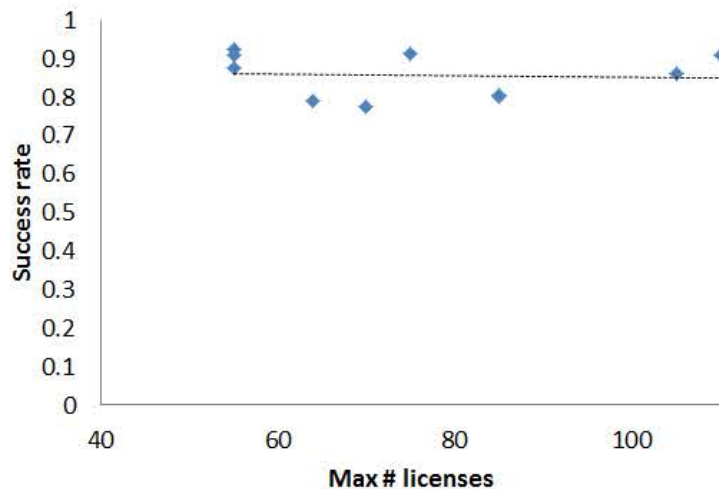
Hunter satisfaction rating by population size



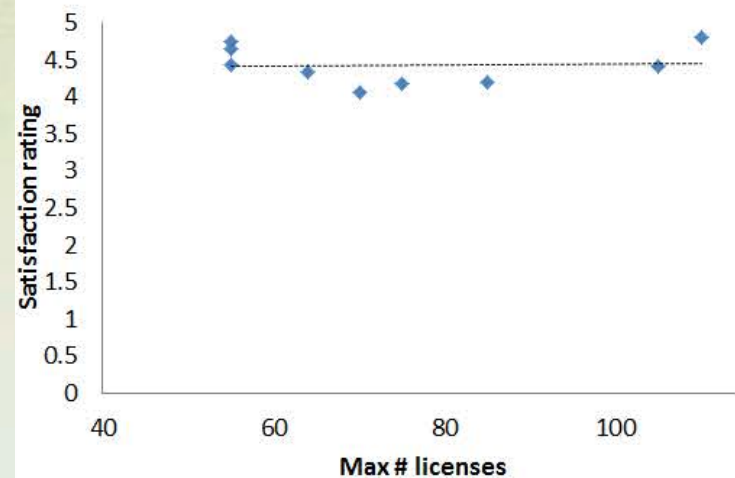
Hunter satisfaction rating by harvest success rate



Success by total licenses (during hunt period)

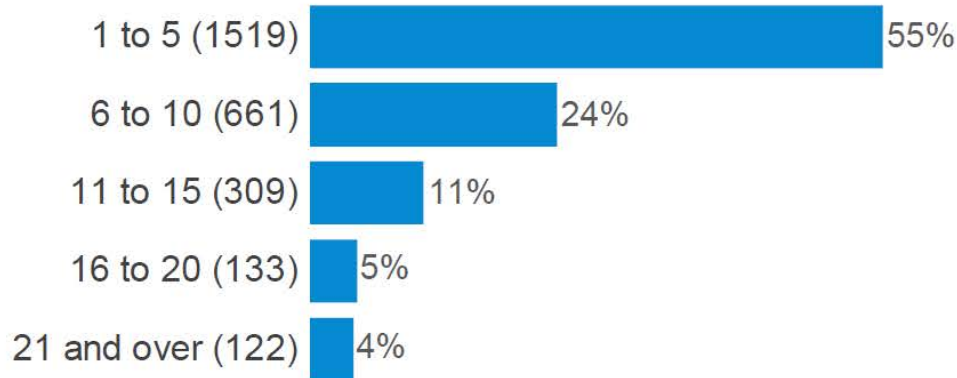


Hunter satisfaction by total licenses (during hunt period)

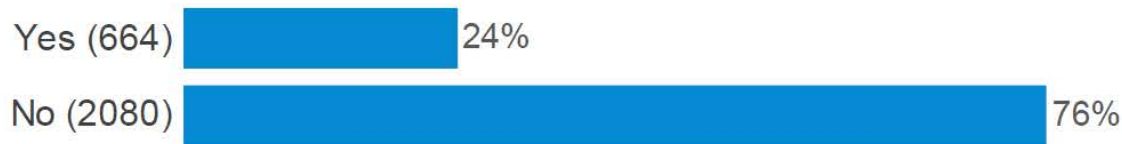


WSMR Oryx Online survey

A: Approximately how many years have you applied for a once-in-a-lifetime oryx hunt? (Years Applied?)



B: Would you be supportive of a White Sands Missile Range proposed draw strategy that increases the number of applicants for oryx hunts by allowing previous once-in-a-lifetime license holders to be able to apply for hunts on White Sands Missile Range? (Allow previous draws?)



WSMR Oryx Online survey

C: Would you like the Department to offer more once-in-a-lifetime oryx draw license in the next ~4 years? (More in 4 years?)



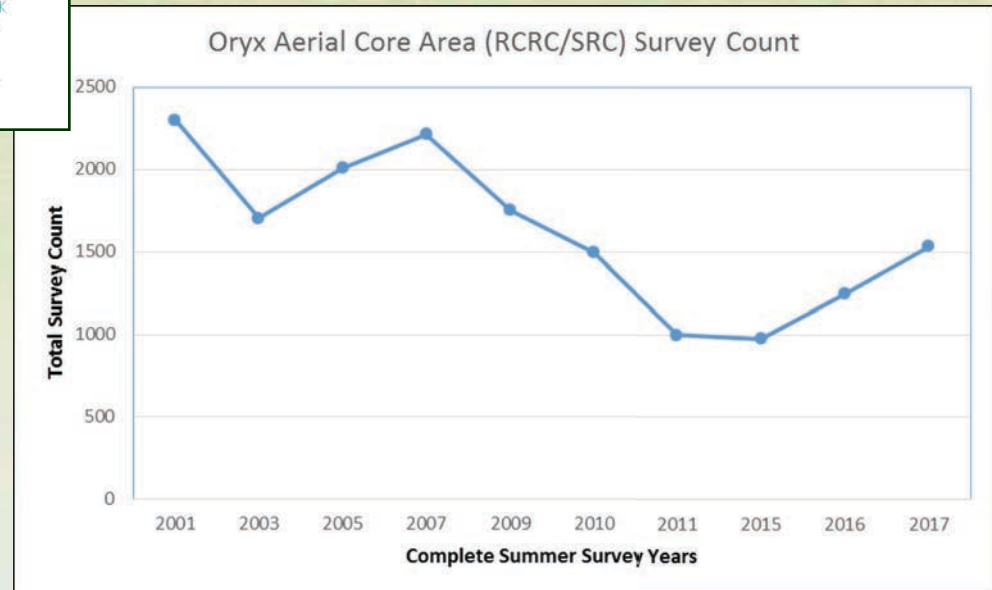
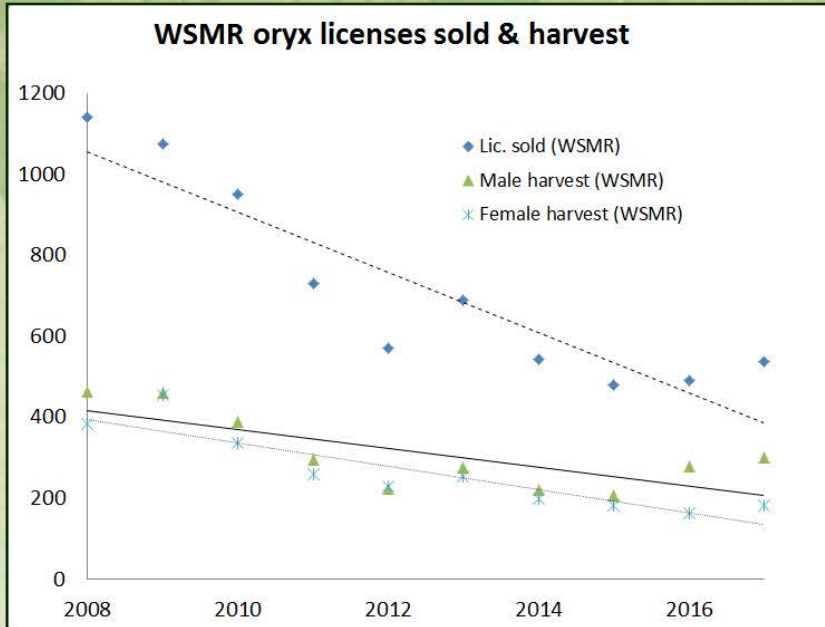
White Sands Missile Range is proposing to change the draw strategy for oryx by removing the once-in-a-lifetime designation from ~60% of the licenses on Range.

That means everyone could apply for and draw oryx licenses on Range, even those who have already held a once-in-a lifetime oryx license.

Would you support this draw strategy? (Support strategy?)

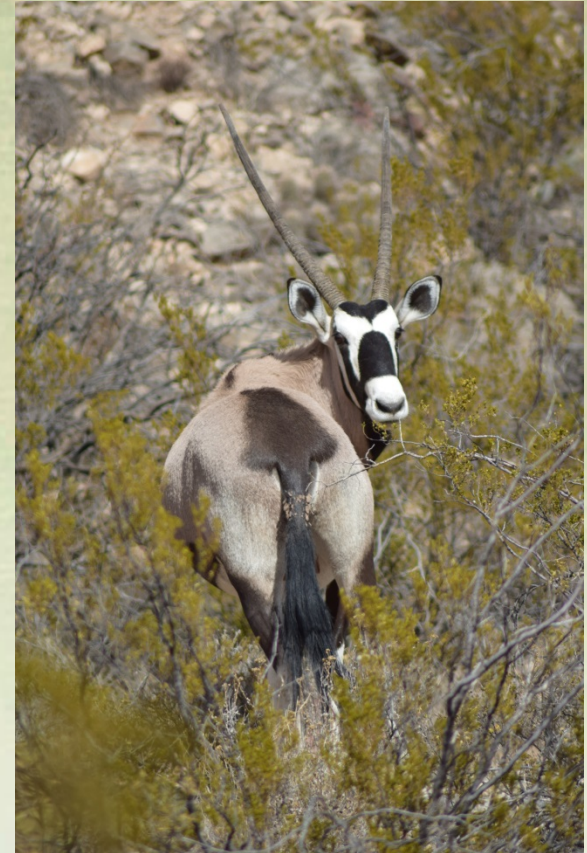


WSMR Oryx Population & Harvest Data

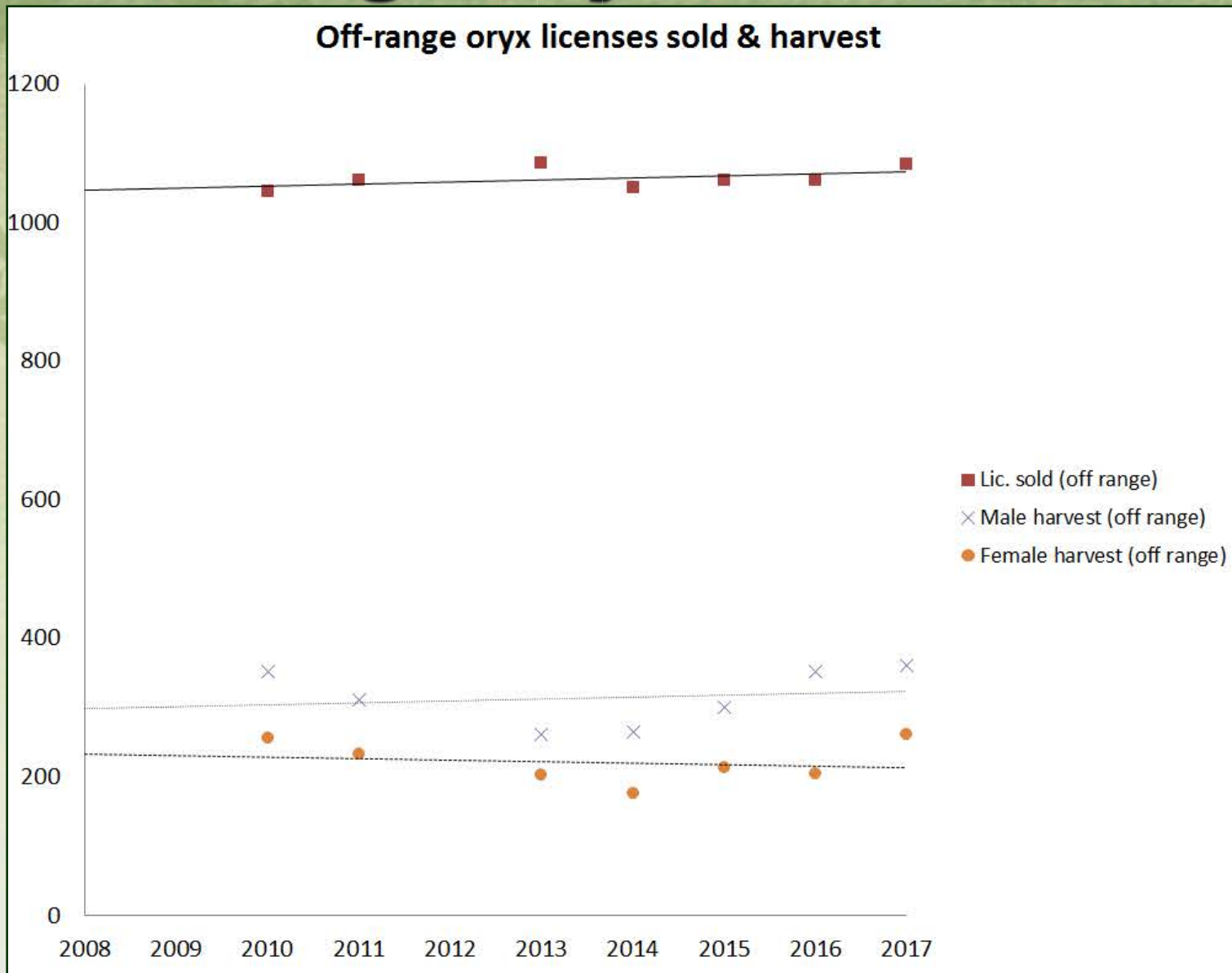


Proposed Amendments: Oryx 19.31.12 NMAC

- **On-range**
 - **Adjust seasons for calendar dates**
 - **Add 4 new on-range hunts to accommodate more hunters**
 - **Increase once in lifetime (OIL) hunts**
 - **270 → 605**
 - **Increase broken-horned hunts**
 - **125 → 135**
 - **Increase I/A veteran hunt**
 - **25 → 45**

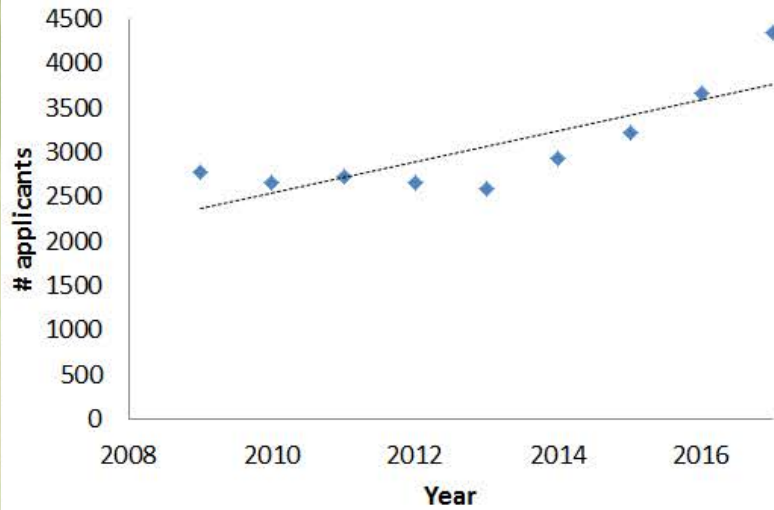


Off Range Oryx Harvest Data

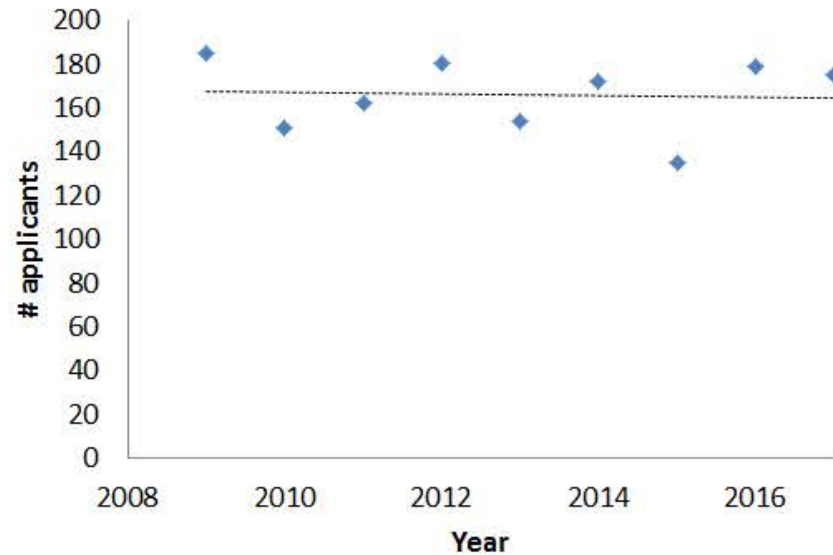


Off Range Application Data

applicants (off-range)



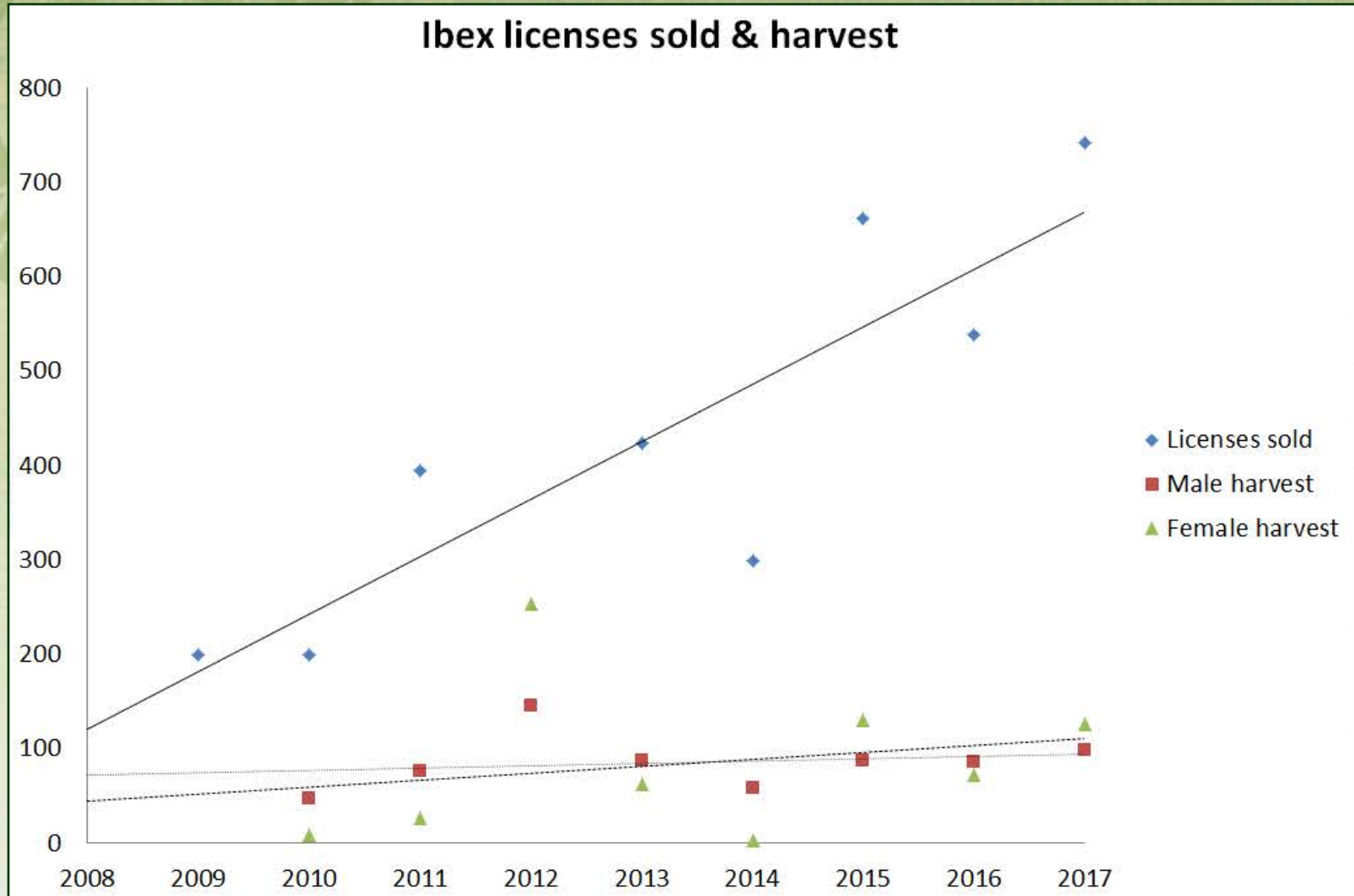
youth applicants (off-range)





Ibex

Ibex Harvest Data

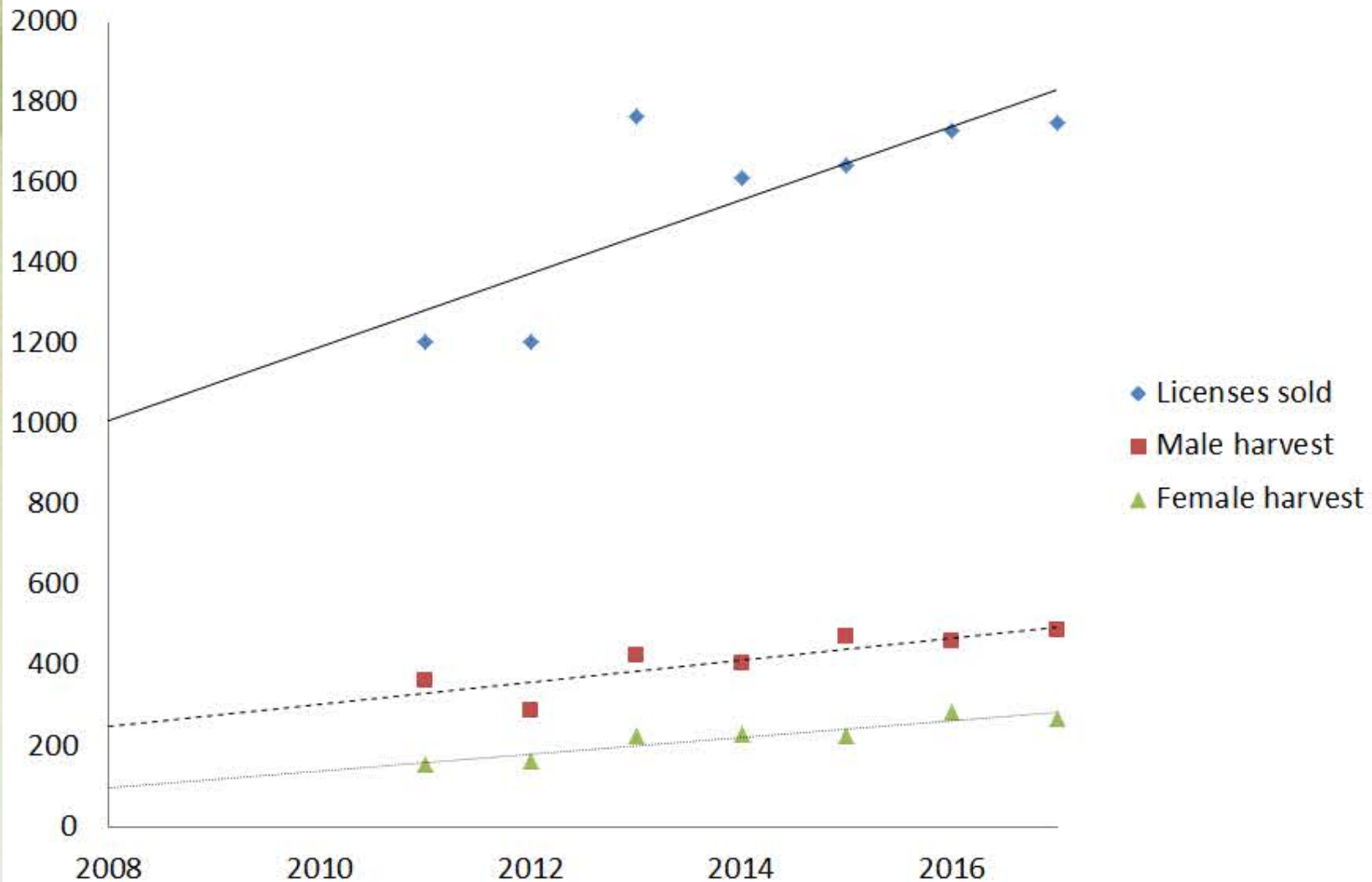




Barbary sheep

Barbary Sheep Harvest Data (draw hunts)

Barbary sheep licenses sold & harvest



Barbary Sheep Harvest Data (OTC hunts)

