



# **Wildlife Management Division**

**Bighorn  
19.31.17 NMAC**

**May 22, 2018**

**New Mexico State Game Commission Meeting**

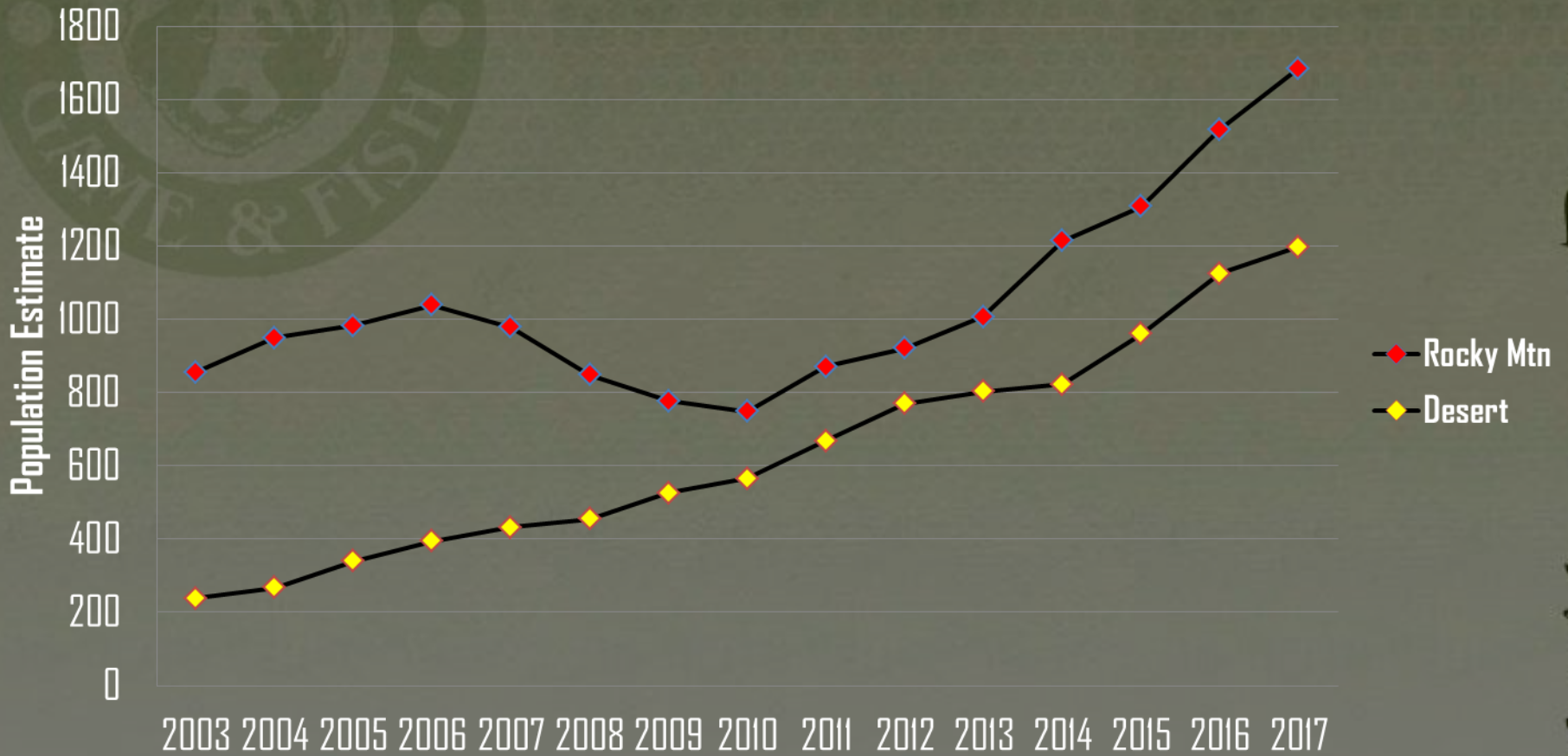
**Los Alamos, NM**

The logo for Gamma & Fish is a circular emblem featuring a bear's head in the center. The words "GAMMA & FISH" are written around the perimeter of the circle.

## To date 2017-2018 Harvest Data

- **Rocky Mountain Rams:** (27/29)
- **Desert Rams:** (28/29)
- **Estimate of Rocky ewes:** (15/30)
- **RGG ewes:** (36/43)

## Statewide Population Estimates for New Mexico Bighorn

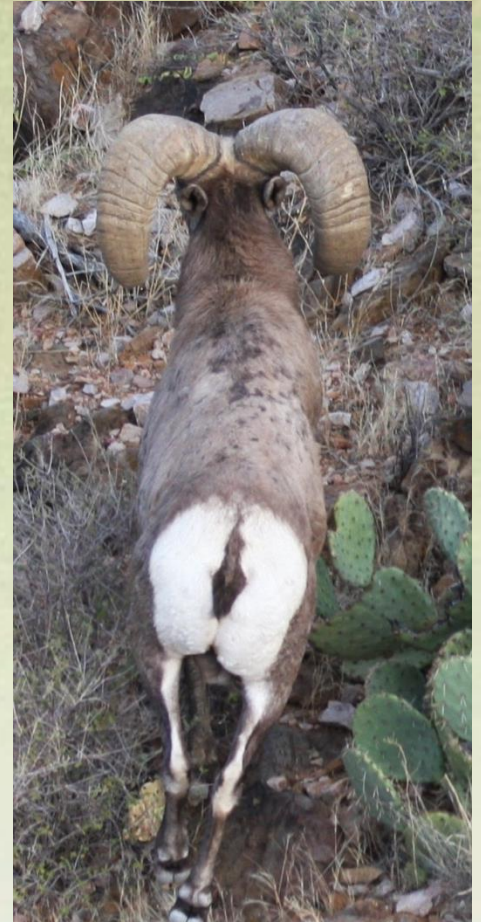


# Summary of public comment

- **Total attendees at meetings (ABQ & Las Cruces): 17**
- **Tracking wounded big game with dogs (2)**
- **Archery ewe opportunity (1)**
- **Enhancement changes (3)**
- **Feeding comment (1)**

# Proposed Amendments: Bighorn 19.31.17 NMAC

- **Adjust seasons for calendar dates**
- **Increase desert & Rocky “up to” numbers for rams**
  - Up to 60 Rocky & 60 desert licenses



# **Proposed Amendments: Bighorn 19.31.17 NMAC**

- **Modify hunt dates to accommodate more hunts, Rocky rams**
  - **MANZANOS, JEMEZ: include TBD hunts**
  - **SAN FRANCISCO RIVER: No Change**
  - **PECOS: 2 ram hunts**
  - **WHEELER: 2 ram hunts**
  - **LATIR: 2 ram hunts**
  - **RIO GRANDE GORGE: 2 ram hunts, 15 days**
  - **CULEBRES: No Change**
  - **DRY CIMARRON: No Change**

# Proposed Amendments: Bighorn 19.31.17 NMAC

- **Add new Feb. hunt date to Fra Cristobals to spread out hunters**



# Proposed Amendments: Bighorn 19.31.17 NMAC

- **Additional Rocky rifle ewe hunts (up to 150)**
  - **PECOS: 2 hunts**
  - **RIO GRANDE GORGE: 3 hunts**
  - **WHEELER: 2 hunts**
  - **LATIR: 1 hunt**





# **Proposed Amendments: Bighorn 19.31.17 NMAC**

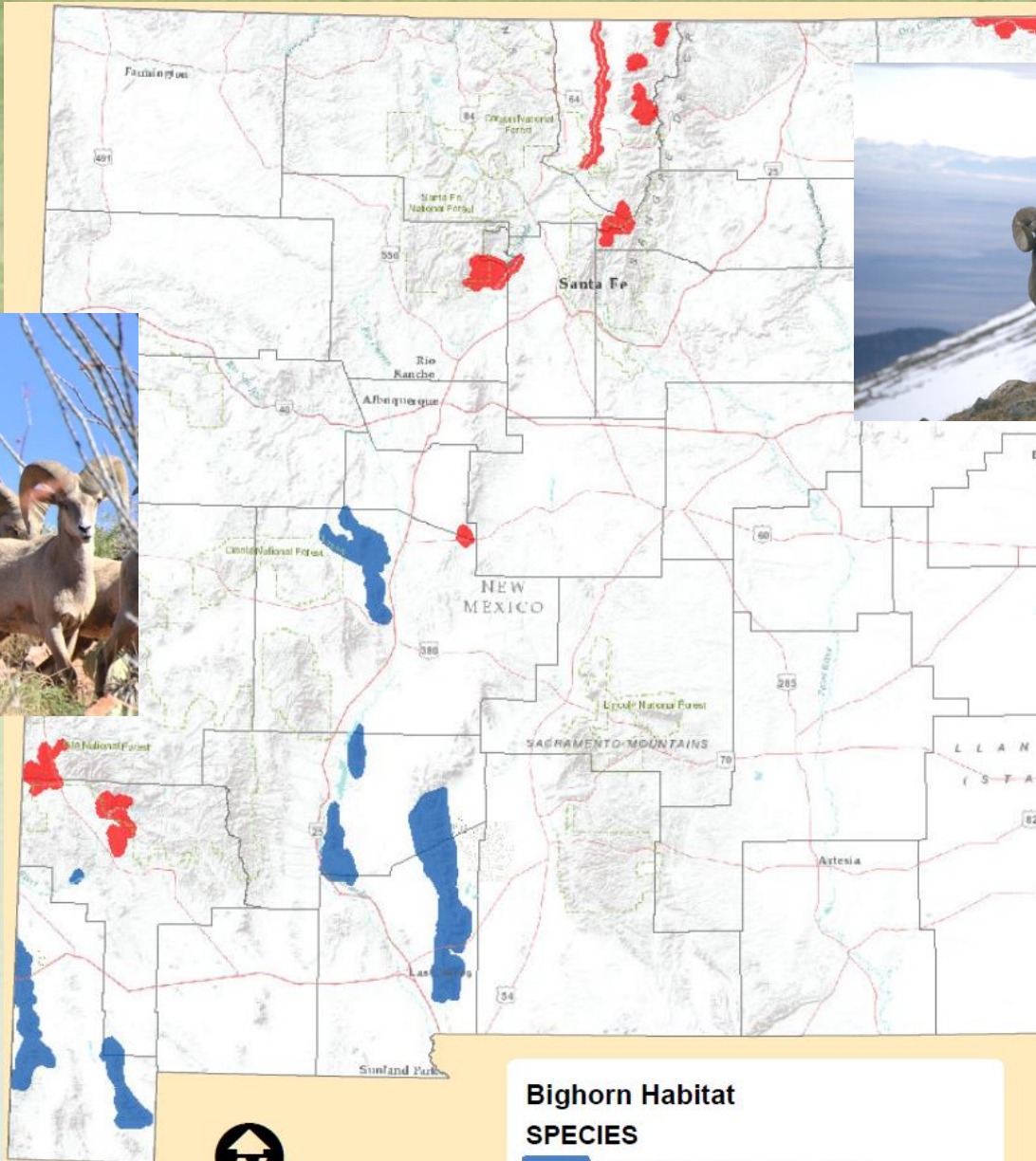
- **Additional Rocky archery ewe hunts  
(up to 60, before rifle ewe hunts begin)**
  - **PECOS: 1 hunt**
  - **RIO GRANDE GORGE: 1 hunt**
  - **WHEELER: 1 hunt**
  - **LATIR: 1 hunt**

# **Proposed Amendments: Bighorn 19.31.17 NMAC**

- **Pop. mgmt. rams potential for NOT once-in-lifetime**
  - **If identified by Dept. w/chairperson concurrence**
- **Enhancement program**
  - **Auction hunter declares June 30**
  - **Raffle hunter declares July 20**
  - **Both hunters can hunt other open areas (exception: each persons declared range)**



***Questions?***



**Bighorn Habitat**

**SPECIES**



DESERT BIGHORN SHEEP



ROCKY MOUNTAIN BIGHORN SHEEP

0 25 50 100 Miles

# Transplants

## New Mexico Desert Bighorn Transplants

YEAR	SOURCE	DESTINATION	NUMBER
2014	Fra Cristobal	Big Hatchets	40
2014	Red Rock	Big Hatchets	26
2016	Red Rock	Peloncillos	12
2017	Fra Cristobal	Ladrones	22
<b>TOTAL</b>			<b>100</b>

## New Mexico Rocky Mountain Bighorn Transplants

YEAR	SOURCE	DESTINATION	NUMBER
2012	Wheeler Peak	Manzanos	31
2014	Wheeler Peak	Jemez	45
2016	Red River	Jemez	3
2017	Red River	Jemez	33
<b>TOTAL</b>			<b>112</b>

# Rocky Population Estimates

## New Mexico Rocky Mountain Bighorn

Herd	Population Estimate
Pecos	350-400
Wheeler	230-275
Latir	55-65
Culebres	65-70
Dry Cimarron	170-190
Rio Grande Gorge	355-400
San Francisco River	75-90 did not survey 2017
Turkey Creek	20-25 did not survey 2017
Manzanos	65-80 did not survey 2017
Jemez	105-115
Red River Valley	80-100 did not survey 2017

# Desert Population Estimates

## New Mexico Desert Bighorn

Herd	Population Estimate
Fra Cristobals	280-320
Caballos	170-190
Peloncillos	130-150
Little Hatchets	60-80
Big Hatchets	135-155
Sierra Ladron	110-125 did not survey 2017
San Andres	220-260