



**EIK**

**19.31.14 NMAC**

**October 2, 2014**

**New Mexico State Game Commission Meeting**

**Socorro Fe, NM**



# Public Comment

- **386** public comments specific to elk
  - Decrease GMU 9 licenses
  - Increase nonresident opportunity specifically A
  - Restructure archery hunts
  - Restructure overlapping hunts (deer/elk)
  - Transferability of pvt tags
  - Point system/Draw structure
  - Allow seniors to hunt w/crossbow



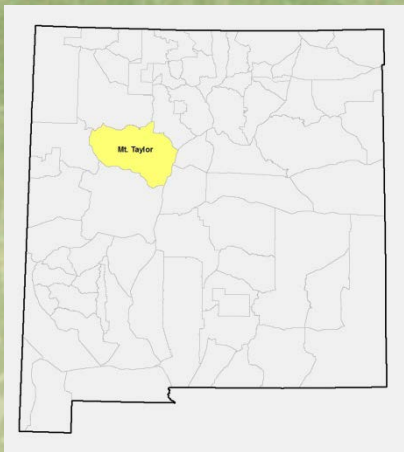
# Public Comment Continued

- Decrease female harvest in Jemez
- Add archery hunt in GMU 56
- More hunts in rut
- GMU 34/36: antler point restrictions for bulls, no license increases
- Transferability of enhancement authorizations



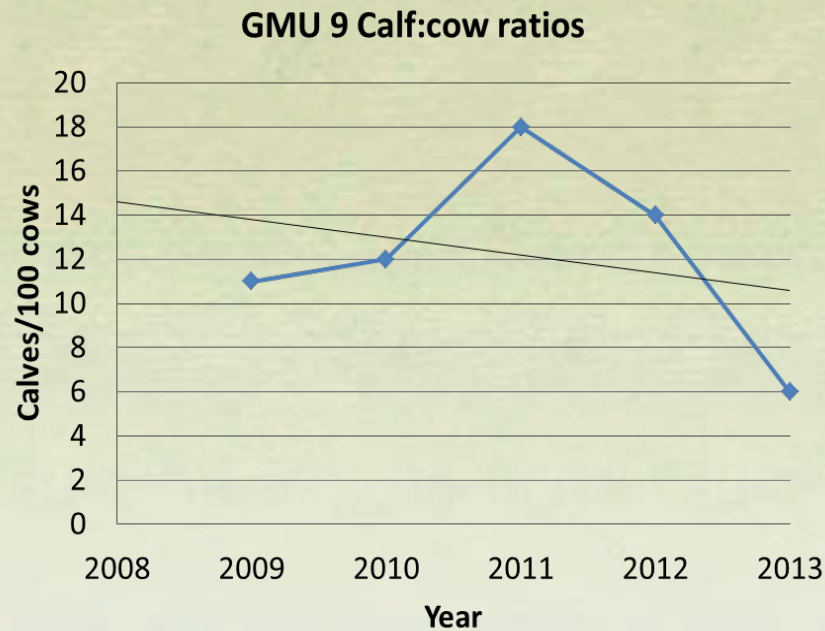
# Final Amendments:

- Adjust seasons for calendar dates
- Address overlapping deer/elk hunts
- COER changes (better reflect elk use in Northeast and Southeast)
  - GMU's 45, 49, 50, 53, 34
- Transferrable & non transferrable units
  - Include GMU 55B as transferable
  - Remove GMU's 54, 57, 58
- Standardize archery hunts
  - 2-hunt period (Sept. 1-14 & Sept. 15-24 statewide)



# Mt. Taylor herd unit

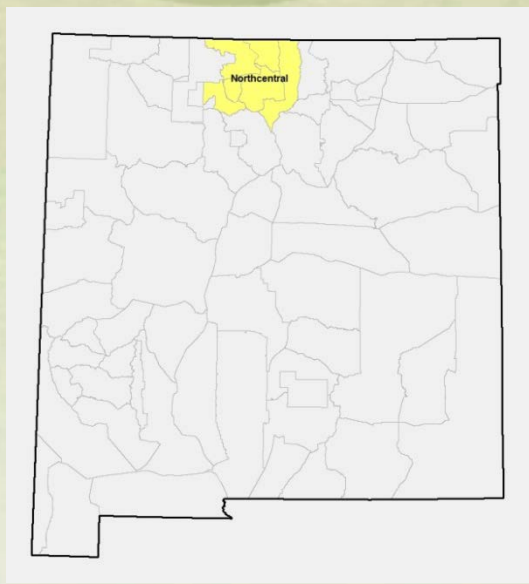
- **GMU 9: 60%** reduction in A licenses (and make muzzleloader hunts instead of rifle)
  - Low calf:cow ratios and decreasing population





# North central herd unit

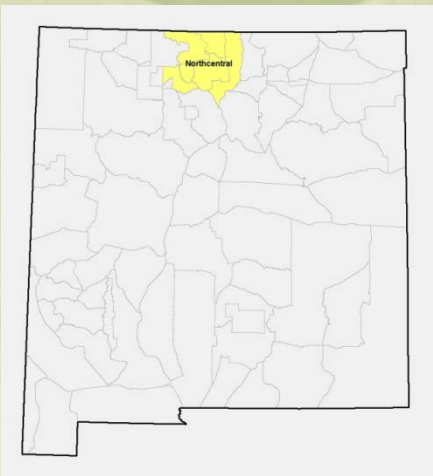
- Move GMU 50 A hunts out of MB hunts
- Redistribute antlerless licenses to account for elk distribution across Northcentral landscape
  - Increase A licenses in GMU 51 by 15%
  - Decrease GMU 5B by 12% & GMU 52 by 17%







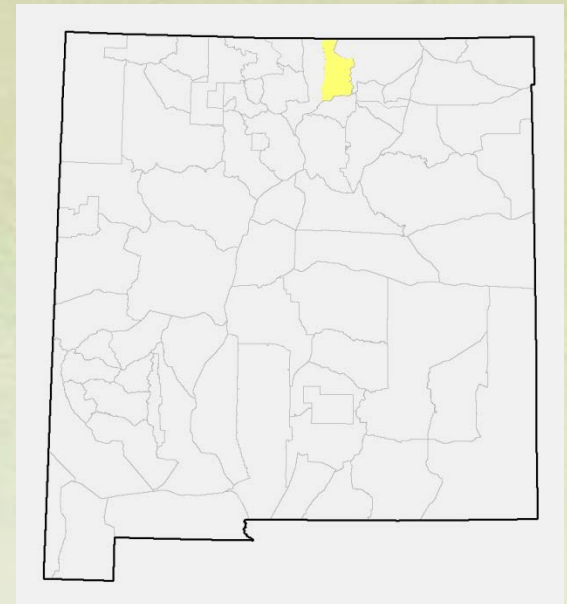
# North central herd unit



- Add new MB hunts in GMU 5B
  - Total of 4 hunts, 2 in Oct., 1 in Nov., 1 in Dec.
- Add new A hunt in GMU 5B
  - Total of 3 hunts, 2 in Oct., 1 in Nov.
  - Move 25 A licenses to GMU 51 to account for elk distribution
    - Decrease of 12% in A

# Ute / Midnight / San Cristobal herd unit

- GMU 53: Develop new hunt of 40 licenses in Northern portions to address elk movement and use.
  - Long season → 16 days (3 weekends) starting 1<sup>st</sup> week of Jan.

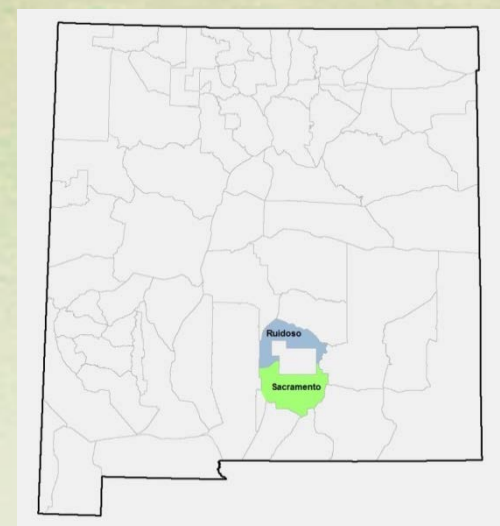




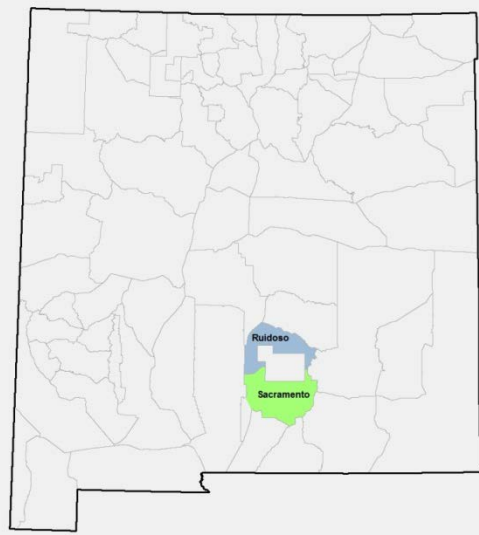


# Ruidoso / Sacramento herd unit

- GMU 34: increase A licenses by 17%
  - High & increasing calf:cow ratios (4-yr avg = 47:100)
    - Increasing population size



# Ruidoso / Sacramento herd unit

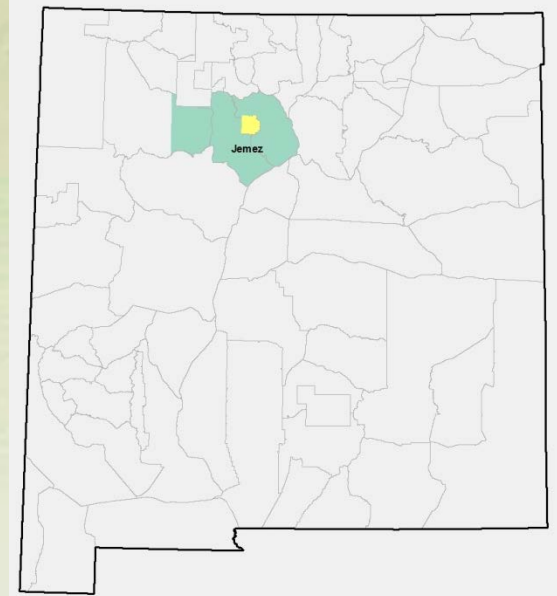


- GMU 36: increase archery licenses by 15% and MB licenses by 9%
  - High calf:cow (48:100) & bull: cow (60:100) ratios
  - Percent of MB in survey increasing (43% to 57%)
  - Bull mortality rate  $\leq$  31%



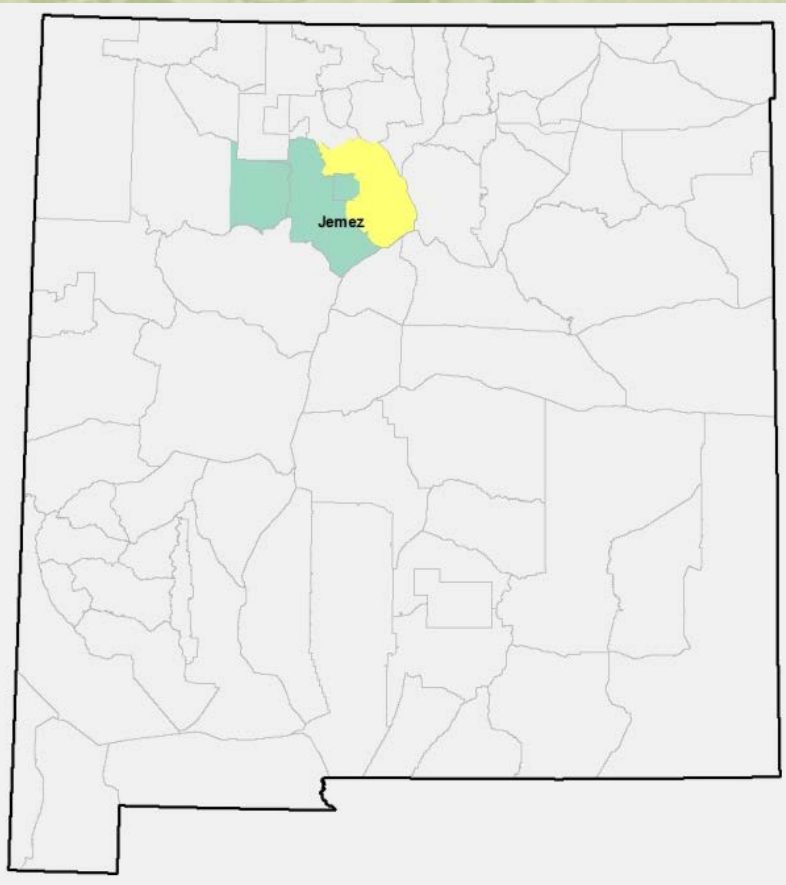
# Jemez herd unit (Valles Caldera)

- Increase 2<sup>nd</sup> archery ES hunt from 5 to 7 days
- Increase all any-weapon Antlerless hunts from 3 to 4 days
- Change 2-person hunt to 1-person hunt with Antlerless licenses
- Change 1<sup>st</sup> any-weapon Antlerless hunt to Youth Only
- Remove 2<sup>nd</sup> antlerless hunt overlapping with MB hunt and redistribute licenses
- Archery: No Change; Mature Bull 11% increase; Antlerless 3% increase





# Jemez herd unit



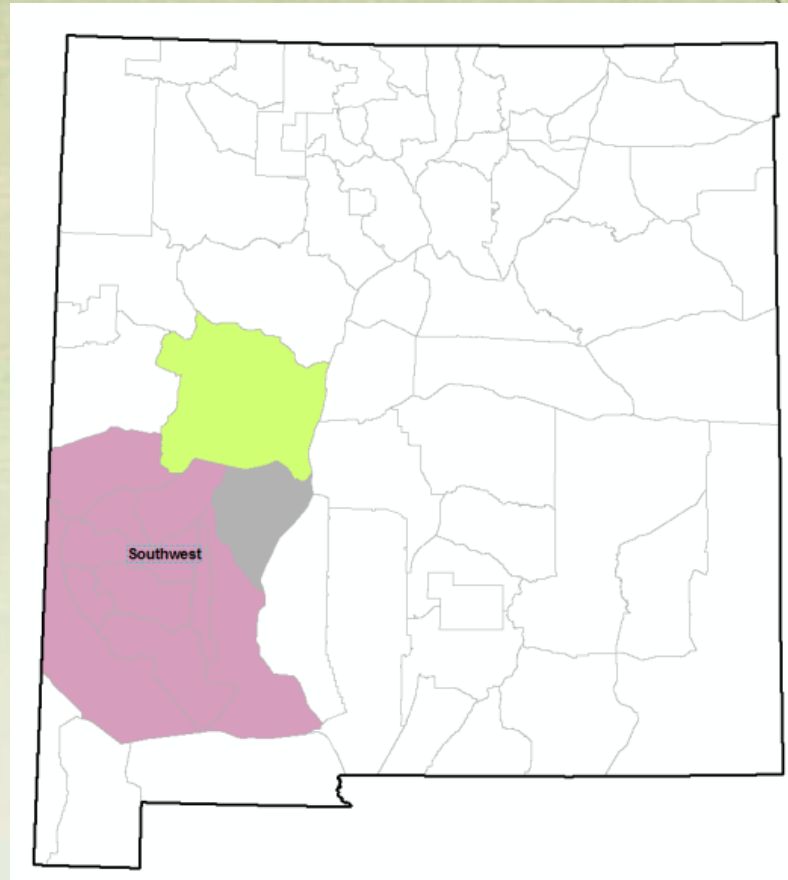
- Reduce A in GMU 6C by 15%
  - Low satisfaction & public comment in favor



# Southwest herd units

(Gila \ San Mateo-Magdalena \ Datil)

- New A hunt in GMU 21A of 30 licenses
- New A hunt in GMU 23 of 20 licenses



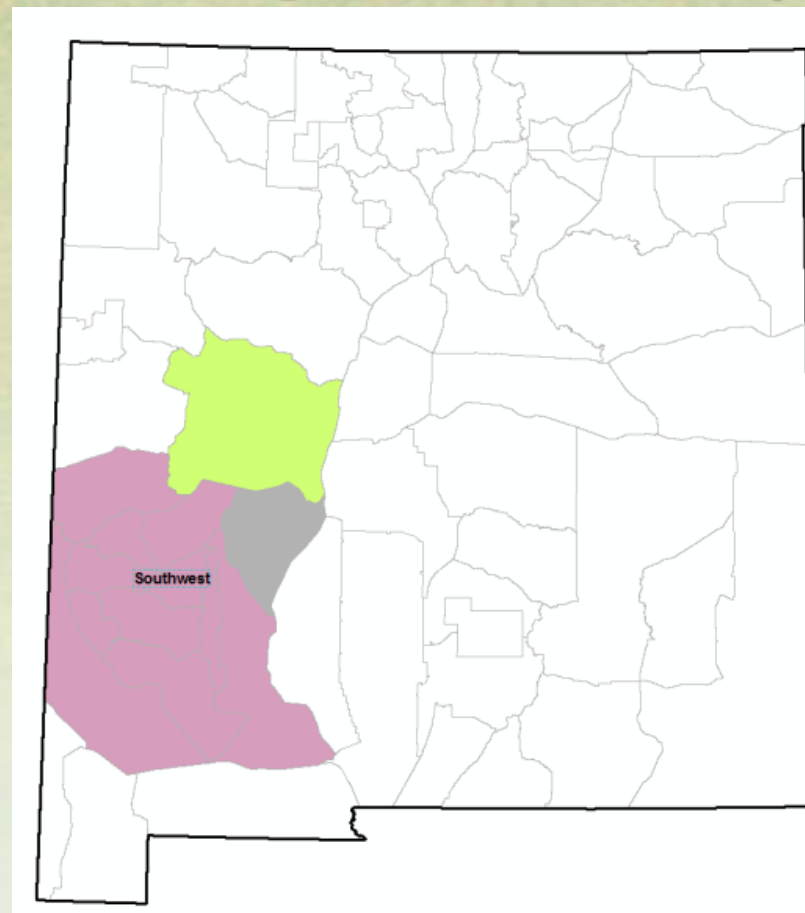
tion

11

# Southwest herd units

(Gila \ San Mateo-Magdalena \ Datil)

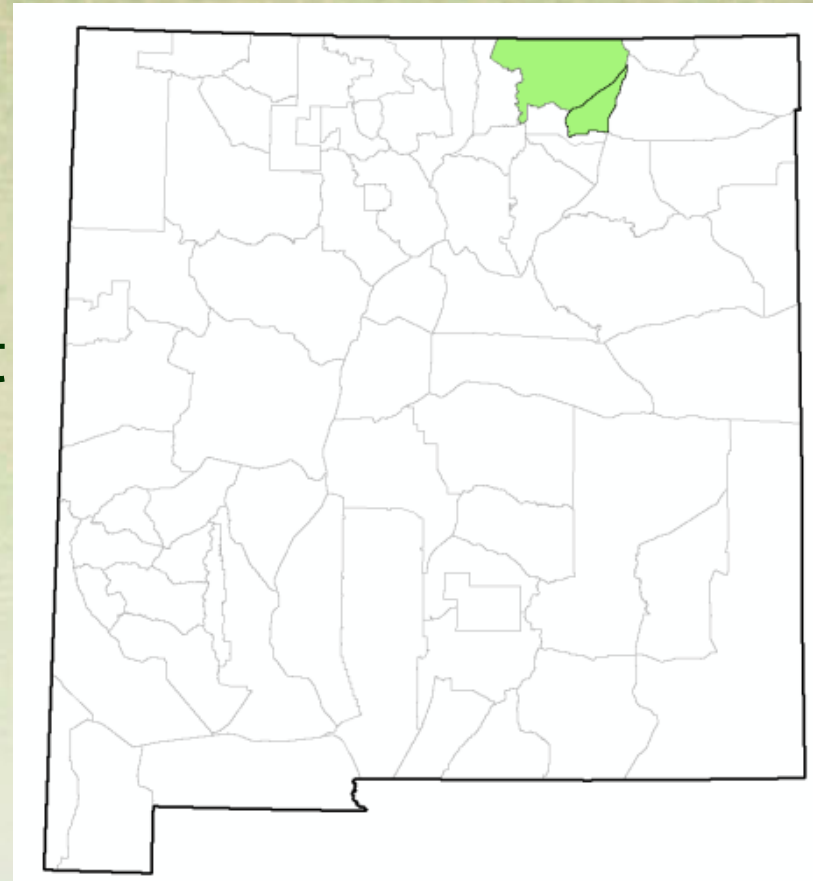
- New late A YO hunt in GMU 24 (including Ft. Bayard) of 5 licenses
- Allow **all** youth hunters in 24 to hunt Ft. Bayard





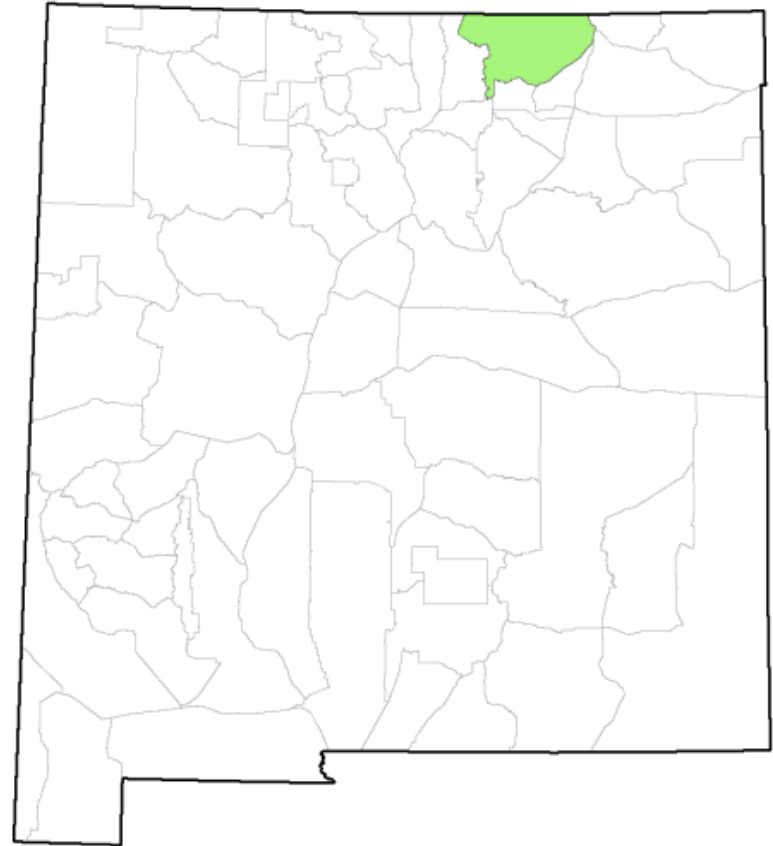
## Northeast area

- Urraca (GMU 55)
  - Move 3<sup>rd</sup> MB rifle hunt (10 licenses) to new Sept. archery hunt
- GMU 56
  - Add new Sept. 1-24 archery hunt (10 licenses)

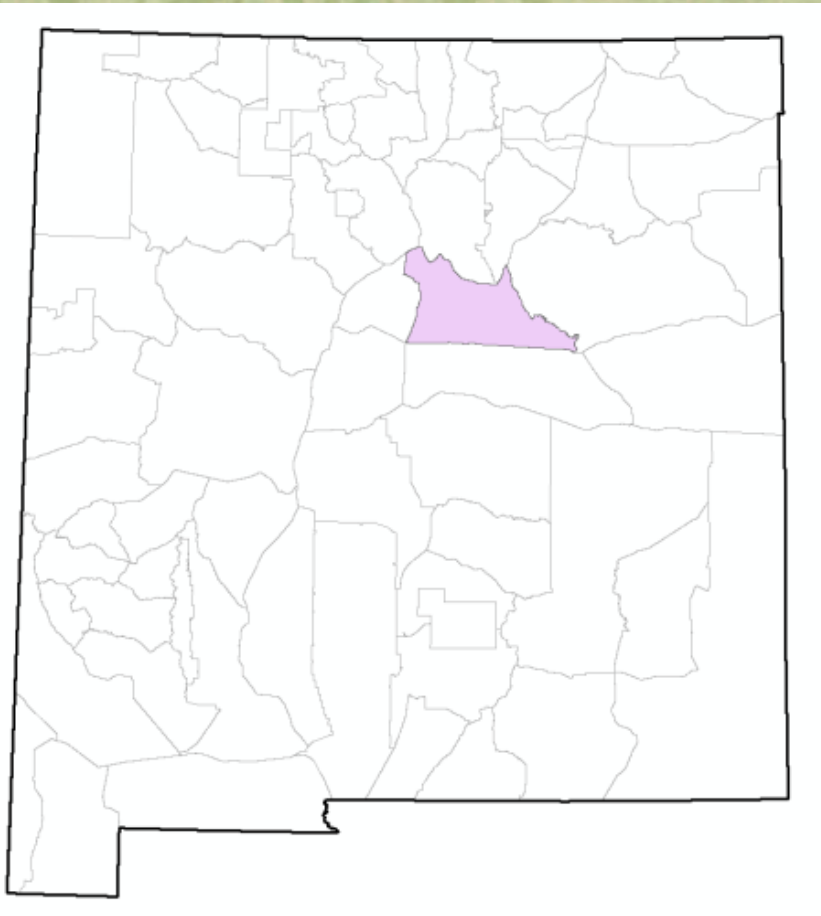


## Northeast area (Valle Vidal)

- GMU 55 (Valle Vidal):  
increase MB by 10%,  
and archery by 25%
  - increased recruitment.
- Move 20 A hunts out of  
YO period and into late  
Nov. hunt



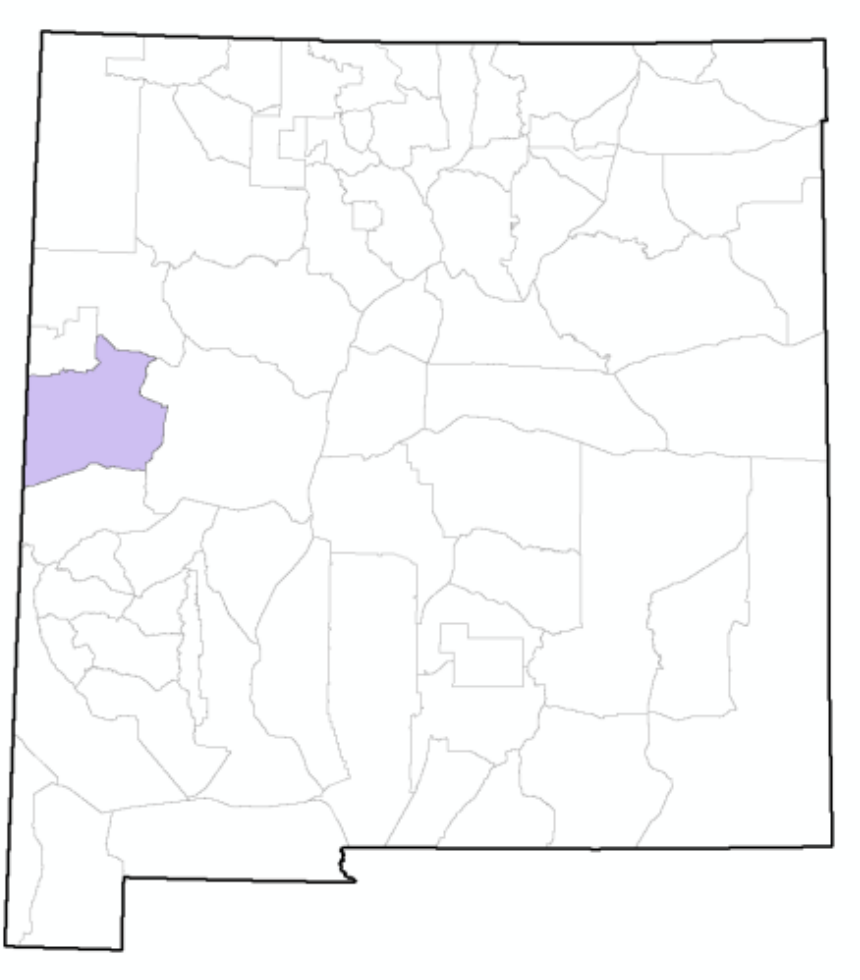
# Northeast area



- Decrease GMU 43 ES rifle licenses by 50% (60 to 30)
  - Limited opportunity to encounter elk
  - Lengthen hunt to 10-days late-Sept.



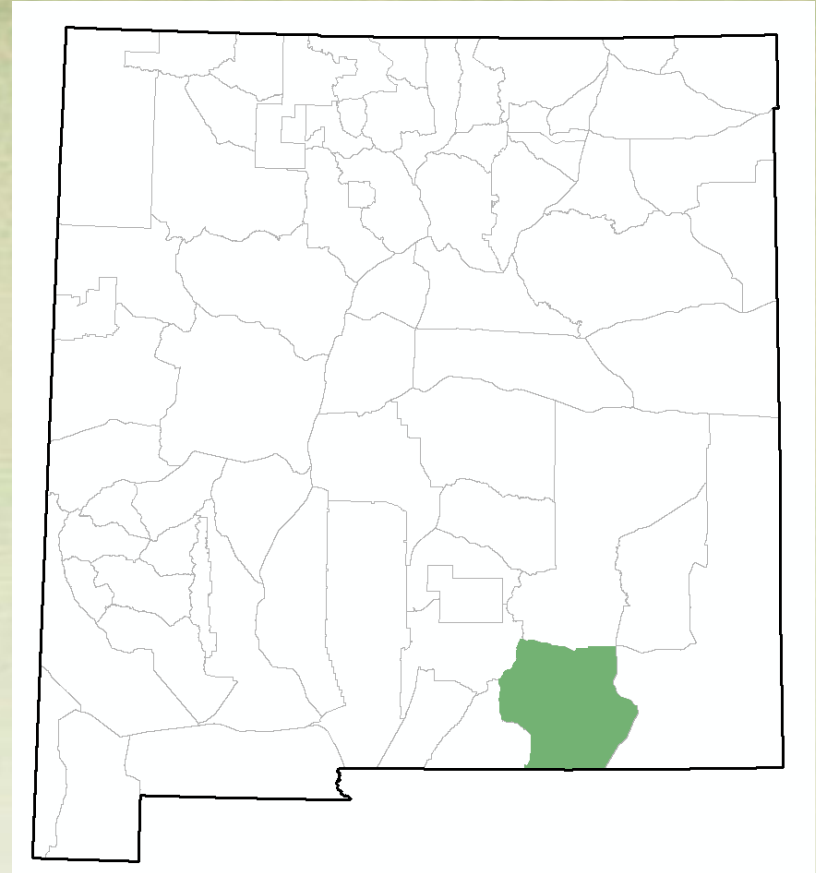
# Northwest area



- GMU 12
  - Make GMU 12 public hunt start dates consistent w/private (Oct. 1)
  - Add more public opportunity in GMU 12 (add 30 more MB & 30 more A licenses)

# Southeast area

- GMU 30
  - Currently at 30 ES rifle licenses
- Increase total public licenses 30 → 40
  - 20 archery licenses
  - 20 ES rifle licenses



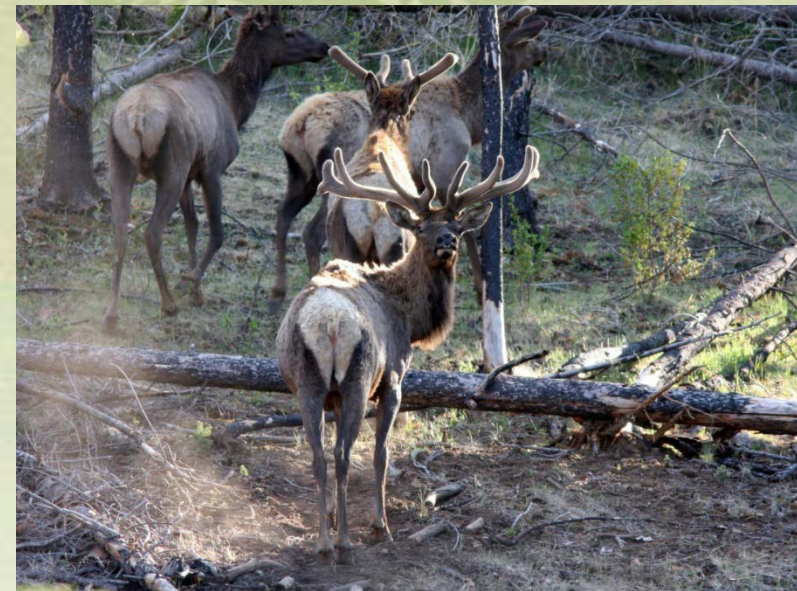


*Questions?*

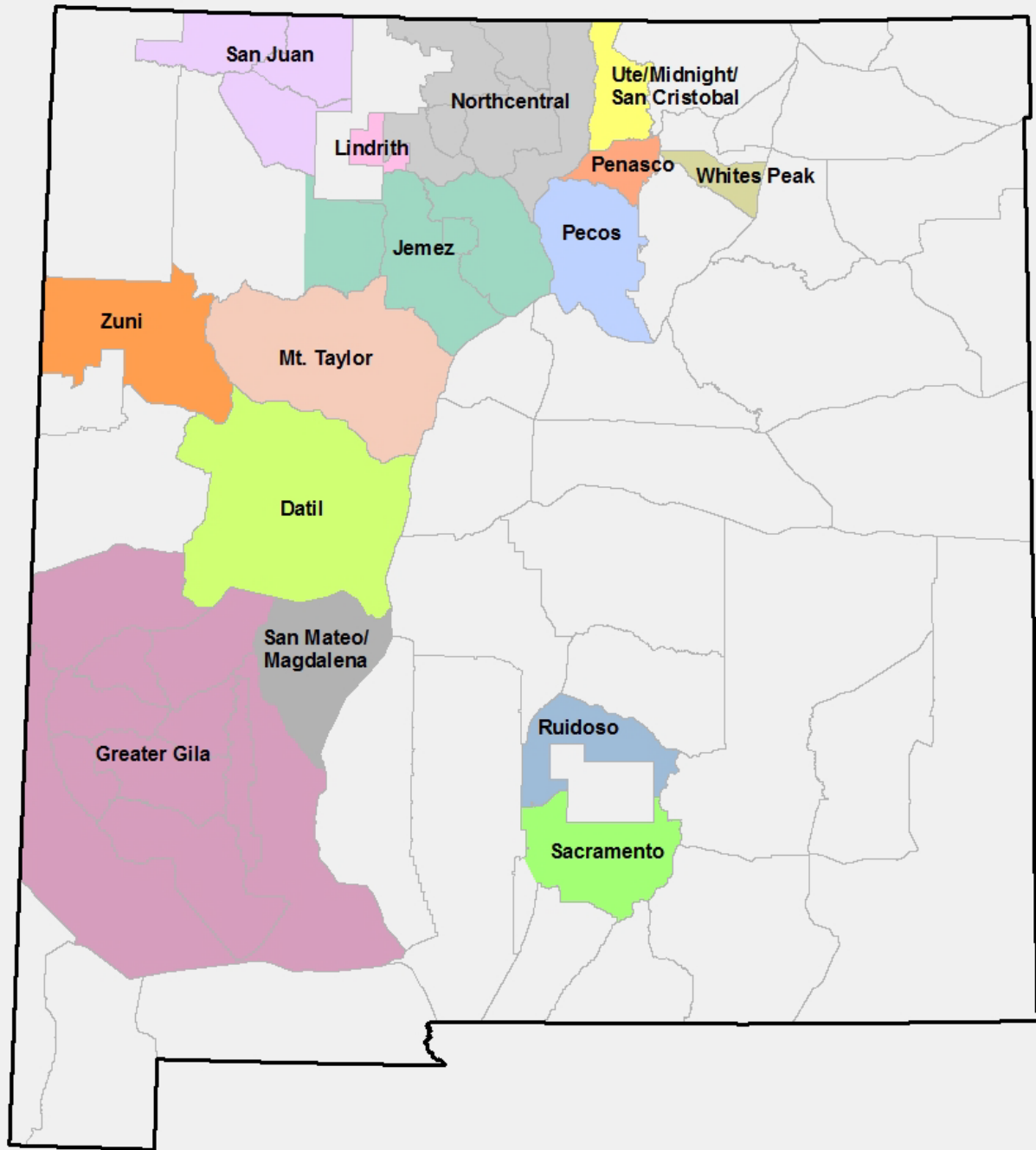


# 2013 Harvest Data

- Statewide 35,982 licenses sold/converted
- 82% of hunters reported
- 40% successful in harvesting
- Estimated statewide harvest
  - Bulls = 7,881, Cows = 6,238
- Satisfaction rating = 3.62



**NMDGF  
elk  
herd  
units**





# Antler Point Restrictions

- Antler point restrictions (APR)
  - Perceived Benefits
    - More mature bulls (but hunting pressure focused on this segment resulting in younger age structure)
    - Improves population productivity (may be true when bull:cow ratios are  $< 10:100$ )
    - More bulls in population (may occur if bull:cow ratios very low [ $<10:100$ ] but no evidence of increase in MB in NM)



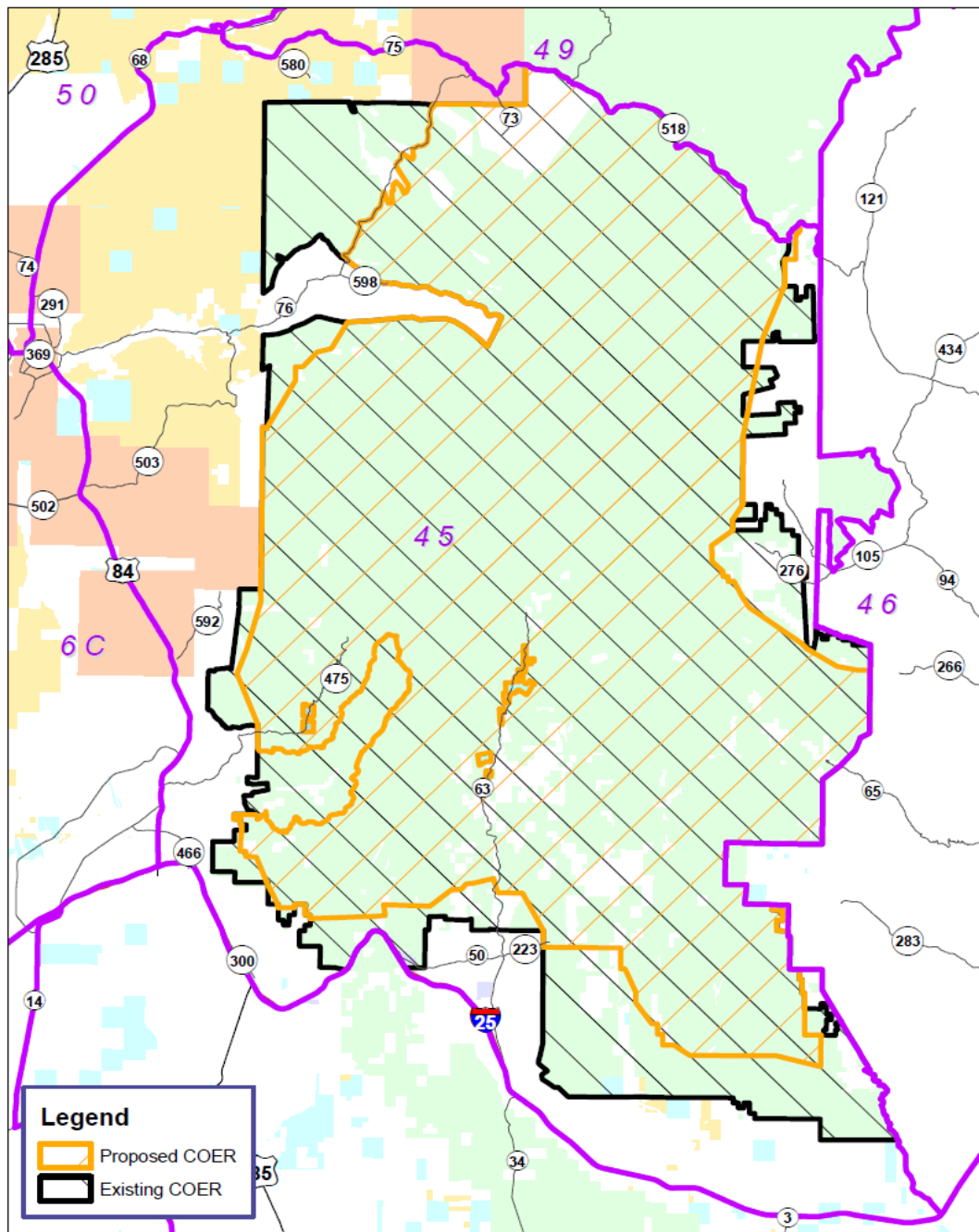
# Antler Point Restrictions

## ■ APR Reality

- Focus all hunting pressure on oldest age class, lowering average age of bulls in the population.
- Protects smaller antlered bulls (including those that will never become trophy animals)
- Most western states have discontinued the use of APR.

## ■ APR In NM

- Success 11% lower w/APR
- Bull:cow ratios did not differ w/APR

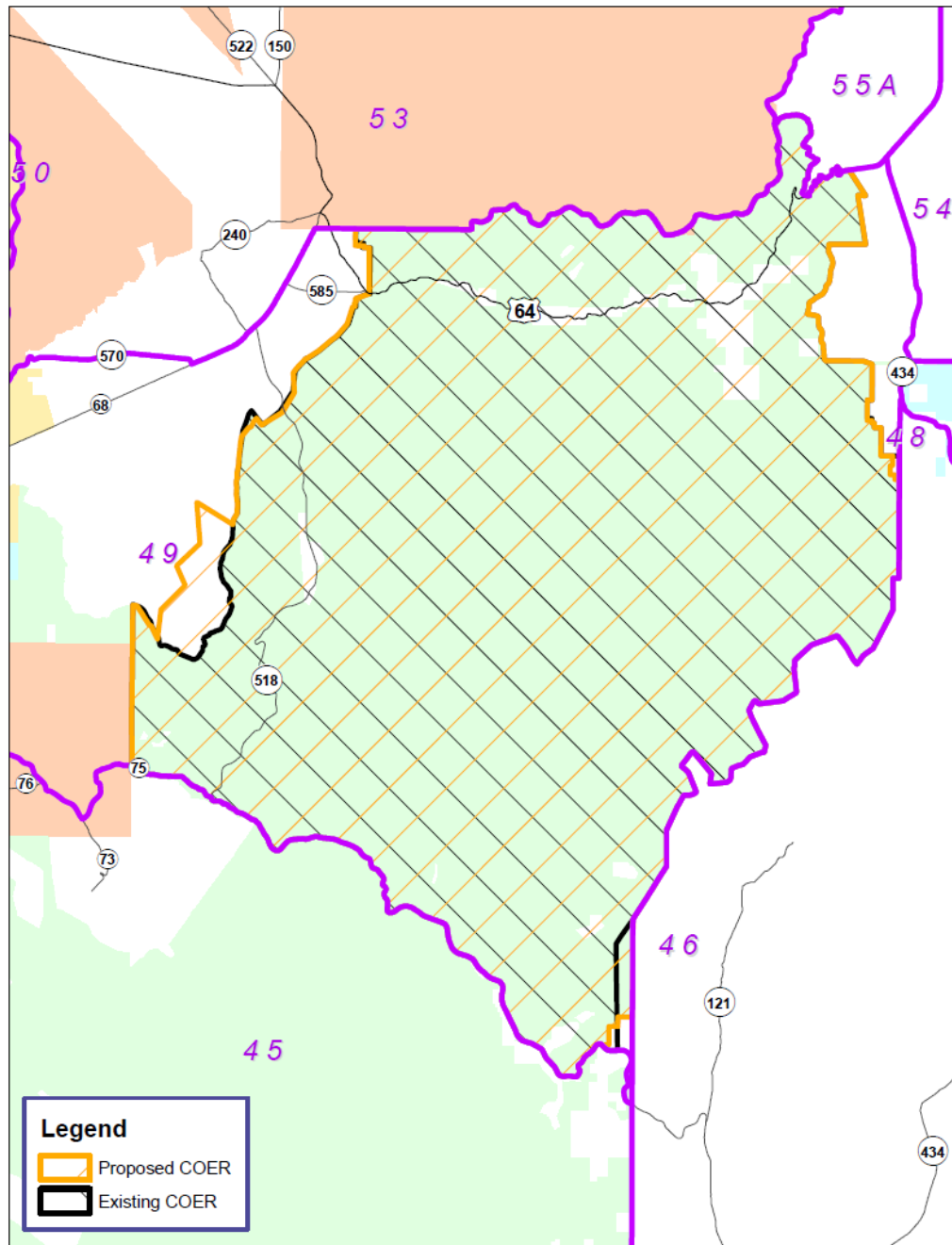


# Proposed Amendments: Elk19.31.14 NMAC

- GMU 45





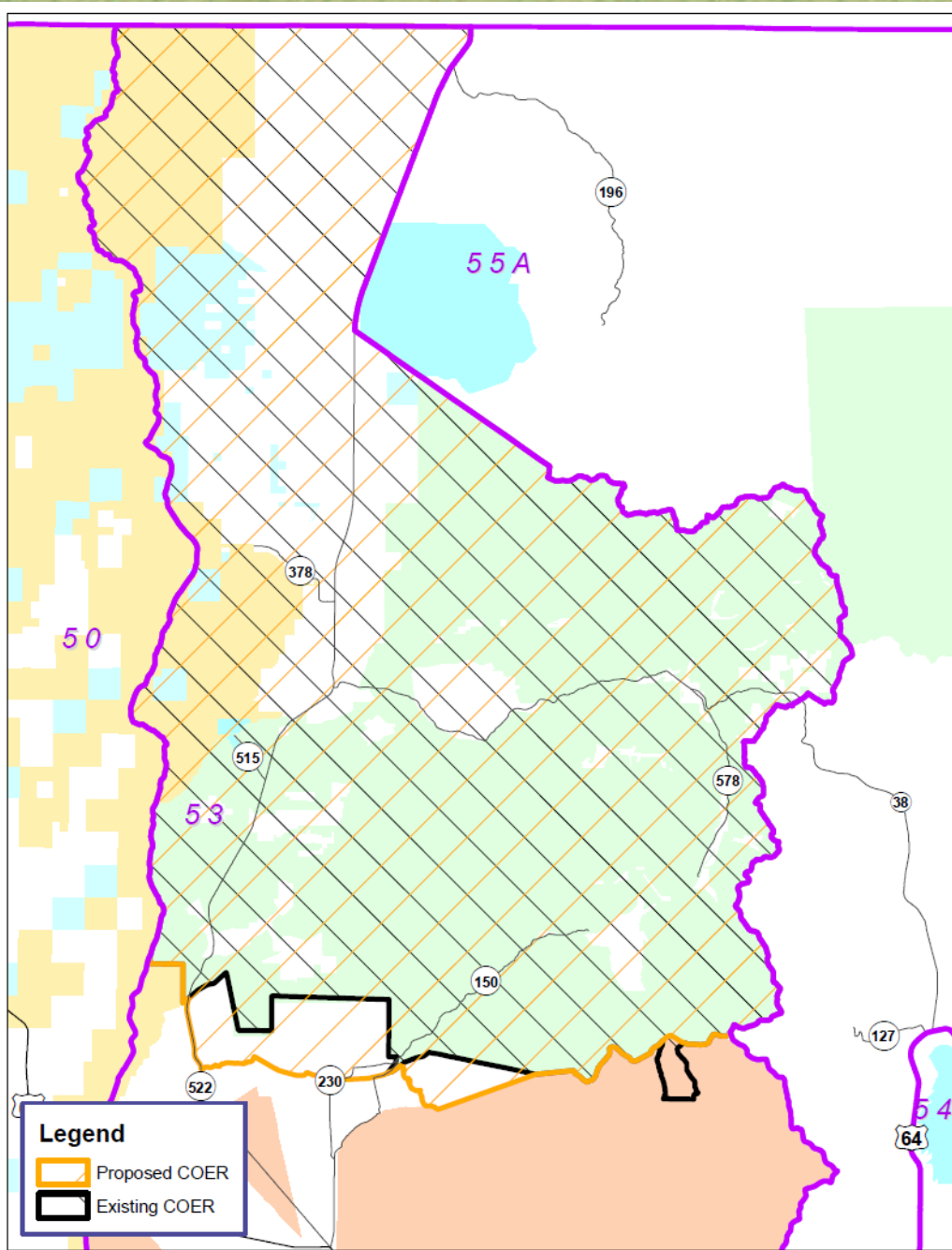


# Proposed Amendments: Elk19.31.14 NMAC

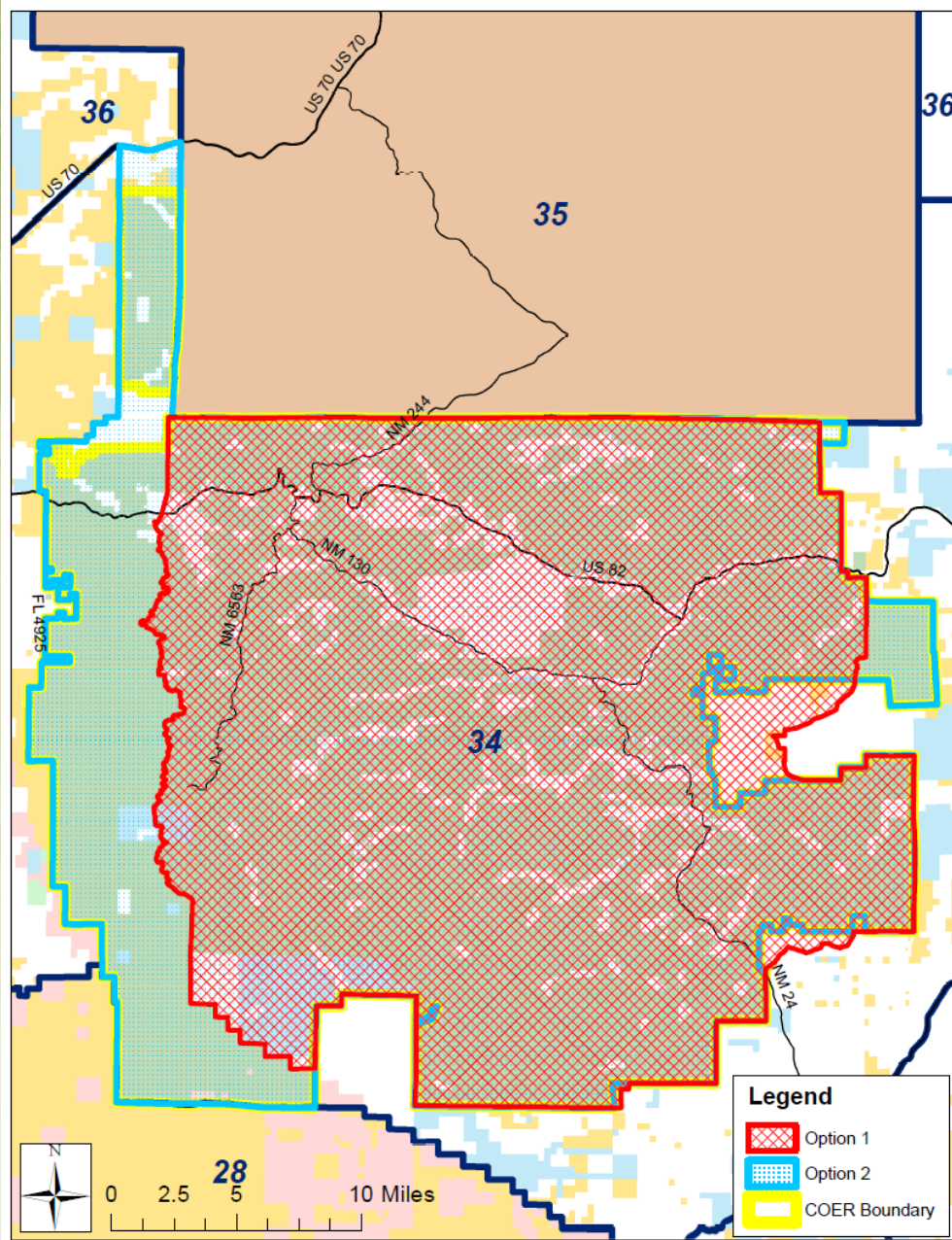
- GMU 49

# Proposed Amendments: Elk19.31.14 NMAC

- GMU 53







# Proposed Amendments: Elk19.31.14 NMAC

- GMU 34