



Bighorn

19.31.17 NMAC

August 28, 2014

New Mexico State Game Commission Meeting

Santa Fe, NM

Translocation



Eddie Moore

Moved 45 Bighorn from Wheeler to Cochiti Canyon

- 35 sheep > 1 years old (4 Rams)
- 10 Lambs



Public Meetings

Alamogordo – 47 people in attendance

Raton – 4 people in attendance

Las Cruces – 17 people in attendance

Farmington – 14 people in attendance

Silver City – 22 people in attendance

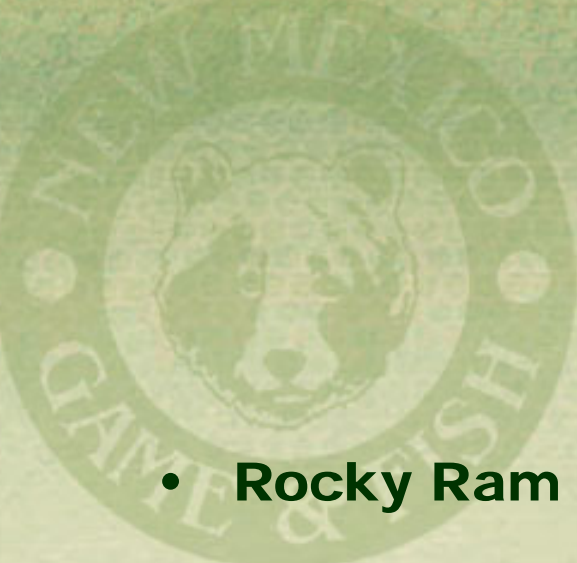
Santa Fe – 5 people in attendance

Roswell – 3 people in attendance

Public Comment

57 Comments Received


- Most comments surround resident/non-resident quota
- Support increasing desert bighorn populations and/or # of hunting licenses
- Prohibit the re-sale of auction or raffle authorization
- Support longer seasons for Rocky's
- Support opening new hunt areas
- Concern over public access in the Dry Cimarron
- Concern about RGG hunt relative to Nat'l Monument status and public viewing of this herd
- Increase youth opportunity for rams and ewes consider separate ewe hunt
- Concern about allocation of monies for waters for new herd(s)



Draw structure: Bighorn 19.31.17 NMAC

- Rocky Ram BHS hunt code with hunt selections
- Desert Ram BHS hunt code with hunt selections
- Rocky Ewe BHS hunt code
- Rocky Ewe BHS hunt code (archery only)

In all the above mentioned hunt codes the Youth hunts would be a hunt selection and limited to the YO requirements.



Draw structure: Bighorn 19.31.17 NMAC

1st Choice

BHS-1-201

1st- Wheeler
2nd- Pecos – (YO)
3rd- Latirs – 1st Hunt

2nd Choice


BHS-1-204

1st- Caballos-1st hunt
2nd- Caballos 2ndHunt
3rd- Hatchet-1stHunt

3rd Choice

BHS-1-202

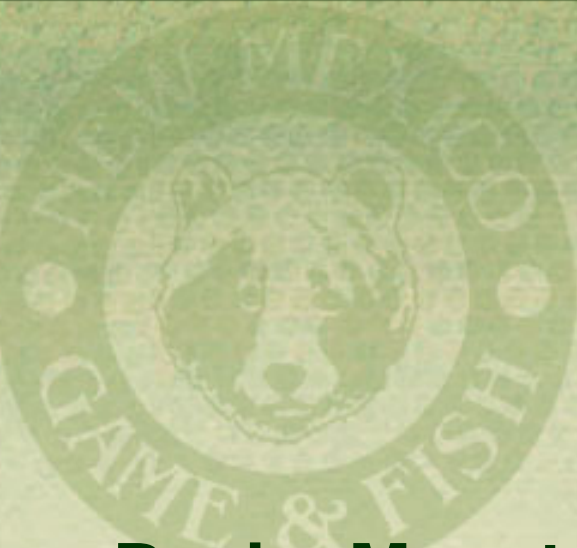
1st- Latirs



License Numbers: Bighorn 19.31.17 NMAC

Rocky Mountain Bighorn Rams (BHS -1- 201)


- Up to 24 licenses
 - Wheeler ~4 licenses
 - Pecos ~4 licenses (1 YO Lic.)
 - Latirs ~ 4 licenses
 - San Francisco/Turkey Creek ~ 1 license
 - Rio Grande Gorge ~1-6 licenses
 - Dry Cimarron ~ 2-4 licenses
 - Culebras ~ 1 license



License Numbers : Bighorn 19.31.17 NMAC

Rocky Mountain Bighorn Ewes (BHS -1- 202)


- Up to 62 licenses
 - Wheeler ~28 licenses (4 YO Lic.)
 - Pecos ~22 licenses (5 YO Lic.)
 - Latirs ~ 12 licenses (1 YO Lic.)



License Numbers :
Bighorn
19.31.17 NMAC

Rocky Mountain Bighorn Ewes (BHS -2- 203)
Archery Only

- Up to 12 licenses
 - Latirs ~ 12 licenses (1 YO Lic.)



License Numbers : Bighorn 19.31.17 NMAC

Desert Bighorn Rams (BHS -1- 204)

- Up to 27 licenses
 - Caballos ~ 2-3 Licenses
 - Fra Cristabol's ~ 12 Licenses (2 YO Lic.)
 - Ladrones ~ 1 License
 - Hatchets ~ 6 Licenses
 - Peloncillos ~2 Licenses
 - San Andres ~ 3 Licenses



Final Amendments: Bighorn 19.31.17 NMAC

- Adjust seasons for calendar dates
- Extend length of all Rocky hunts
- Split Latir ram hunts
- Create new Latir archery ewe hunt

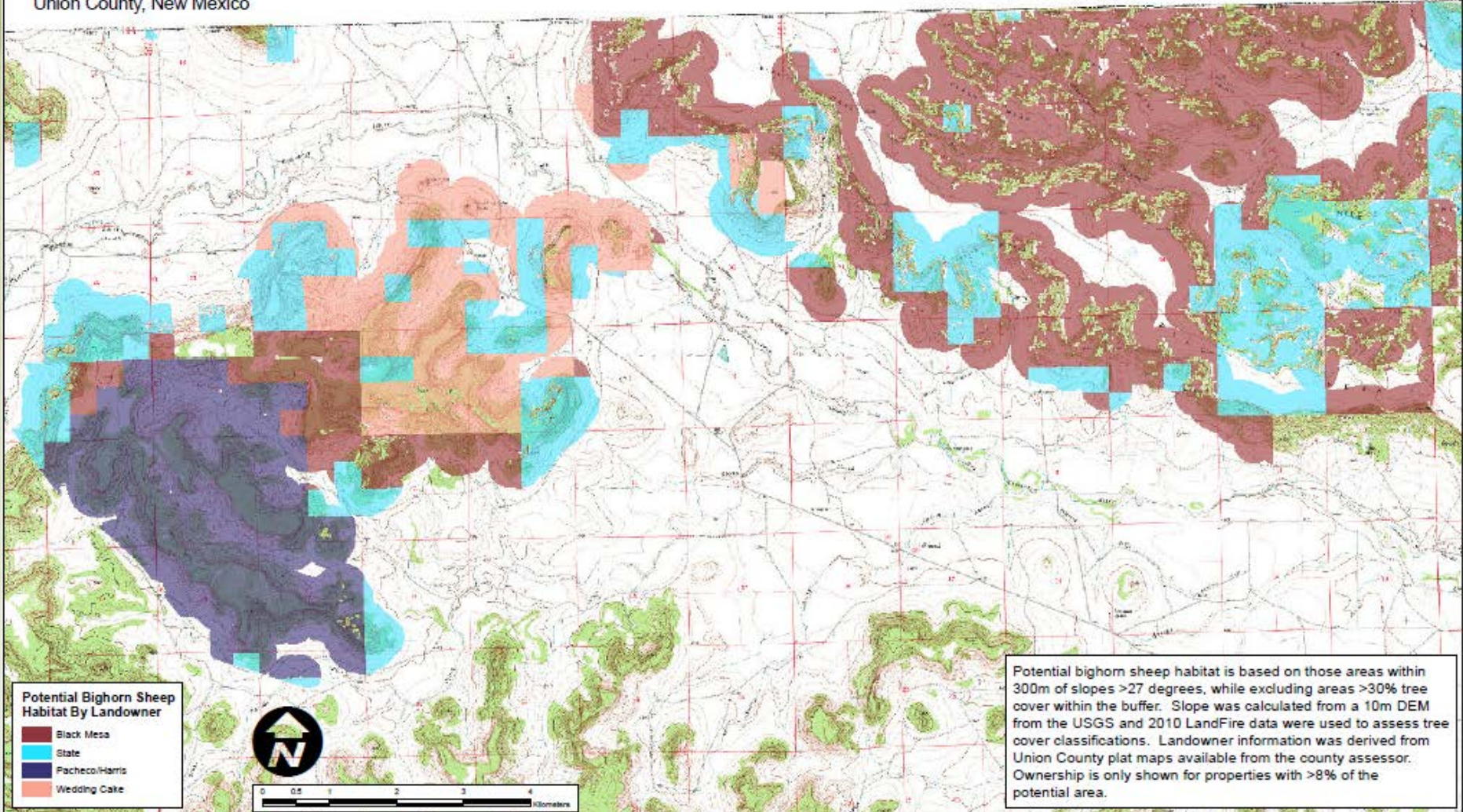


**Final Amendments:
Bighorn
19.31.17 NMAC**

- New Ram hunt in the Rio Grande Gorge
- New Ram hunt in Dry Cimarron
- Reopening Turkey Creek/San Francisco

Dry Cimarron

Potential Bighorn Sheep Habitat By Landowner
Union County, New Mexico



Wildlife Management Division



**Final Amendments:
Bighorn
19.31.17 NMAC**

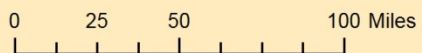
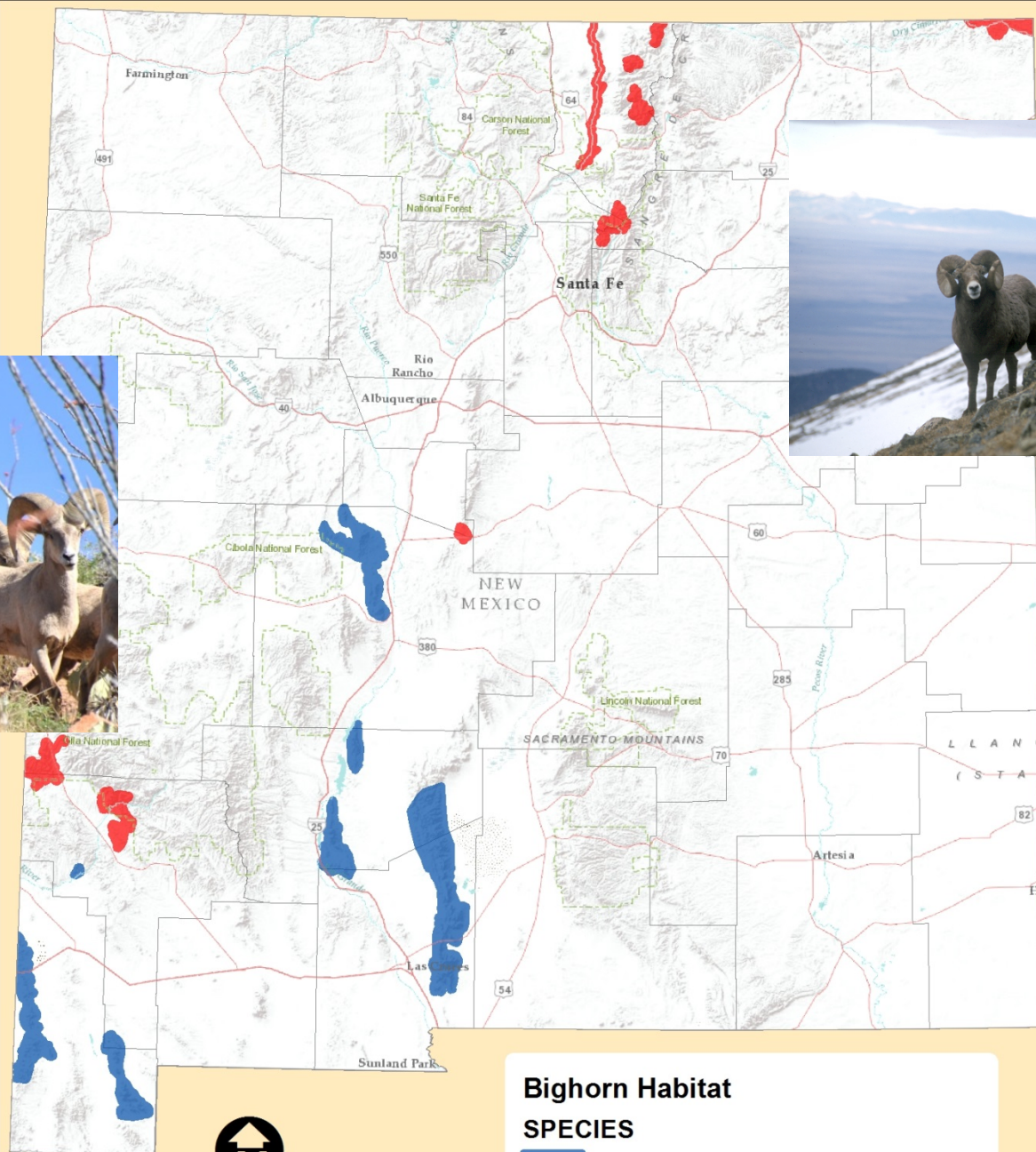
- Change boundary descriptors to GMU's not mountain range



Questions?



CW Waste Management Division



Bighorn Habitat
SPECIES

- DESERT BIGHORN SHEEP
- ROCKY MOUNTAIN BIGHORN SHEEP