



# Pronghorn Translocations

**September 26, 2013**


**New Mexico State Game Commission Meeting**

**Santa Fe, NM**

# 2013 Transplant

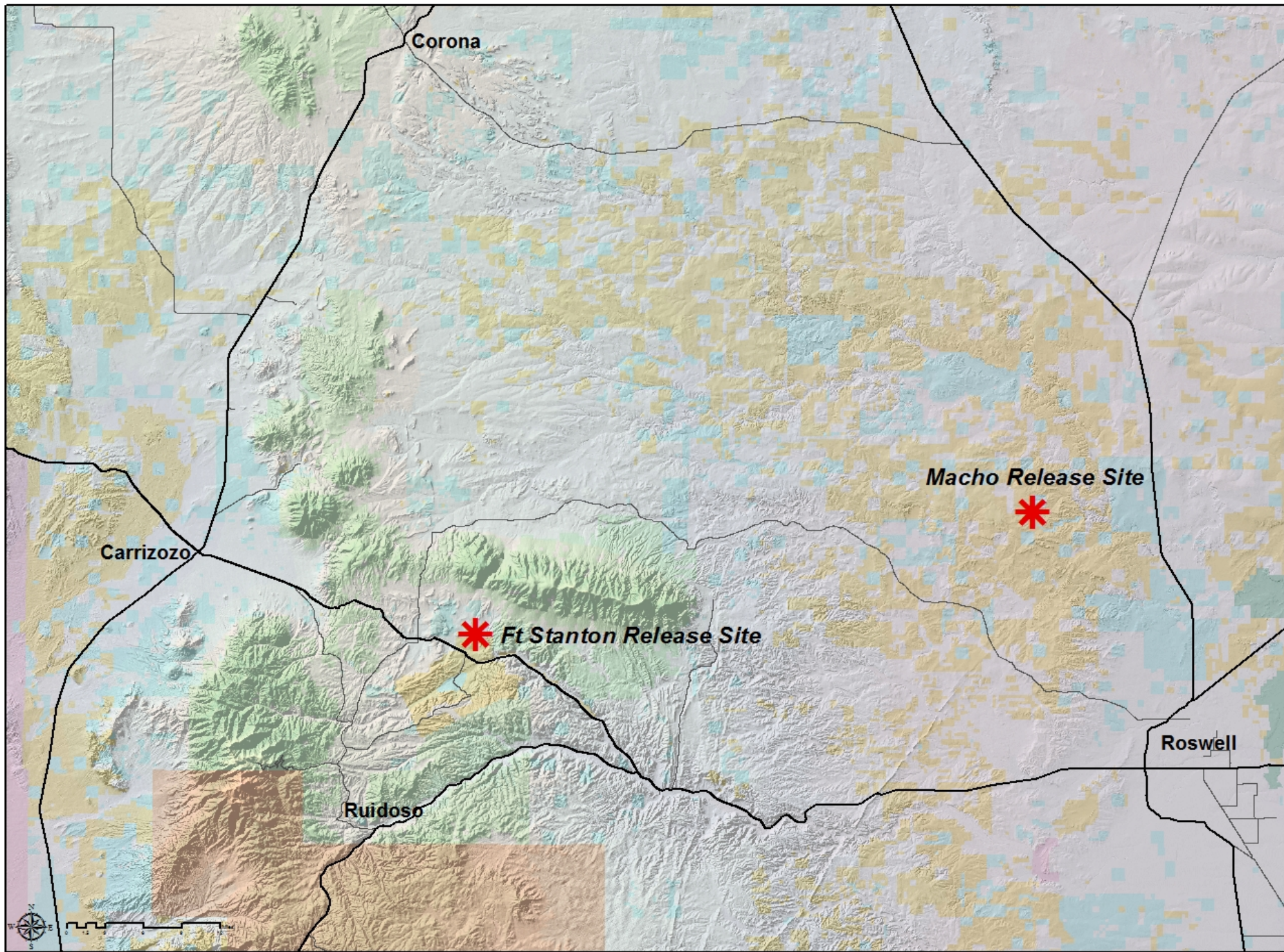
- 74 to Sand Ranch
- 73 to Ft. Stanton
- Observed a high mortality rate from early June to mid-July in Ft. Stanton
- Animals on Sand Ranch had a high Dispersal Rate and higher early mortality





# Plans for 2014 Transplant

- Capture 150-200 Animals depending upon fulfilling outside request
- 75 to Ft. Stanton (won a Shikar Safari Grant to monitor fawn survival)
- 75 to Macho area NW of Roswell
  - Site selected due to recent rains, fence modifications, water developments, agreements through the BLM with grazing permittees
  - Area has the potential to serve as source population to increase pronghorn numbers in 1,000,000 acres



Corona

Carrizozo

Ruidoso

Roswell

*Macho Release Site*

*Ft Stanton Release Site*



The seal of the California Department of Game & Fish is visible in the background. It features a bear's head in the center, surrounded by the text "CALIFORNIA DEPARTMENT OF GAME & FISH".

# Requests

- **The Department recommends allowing two years to fulfill any outside requests starting in 2014**
- **40 Pronghorn to State of Arizona in exchange for 60 Gould's Turkeys**
- **40 Pronghorn to Santa Ana**



***Questions?***

