



Reducing Wildlife-Vehicle Collisions 1995-2013

Mark Watson

Habitat Specialist

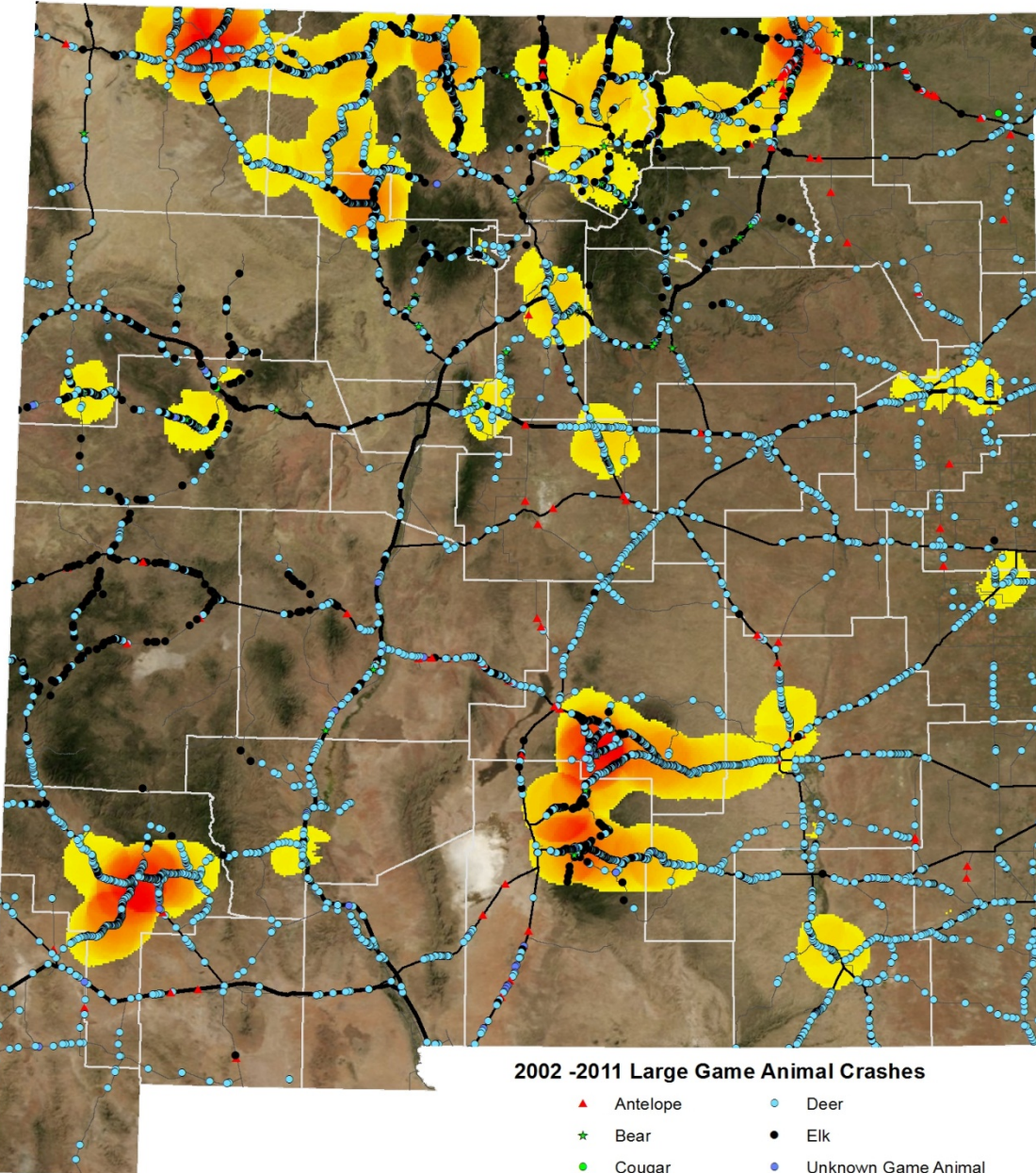
Division of Ecological and Environmental Planning

2002-2011 Large Game Animal-Vehicle Collision Accident Report Data



9685 total reports

Species	Collisions
Deer	7460
Elk	1839
Pronghorn	150
Bear	135
Cougar	8
Game Animal	93



U.S. 550 Deer Fencing Project Animas River to Colorado



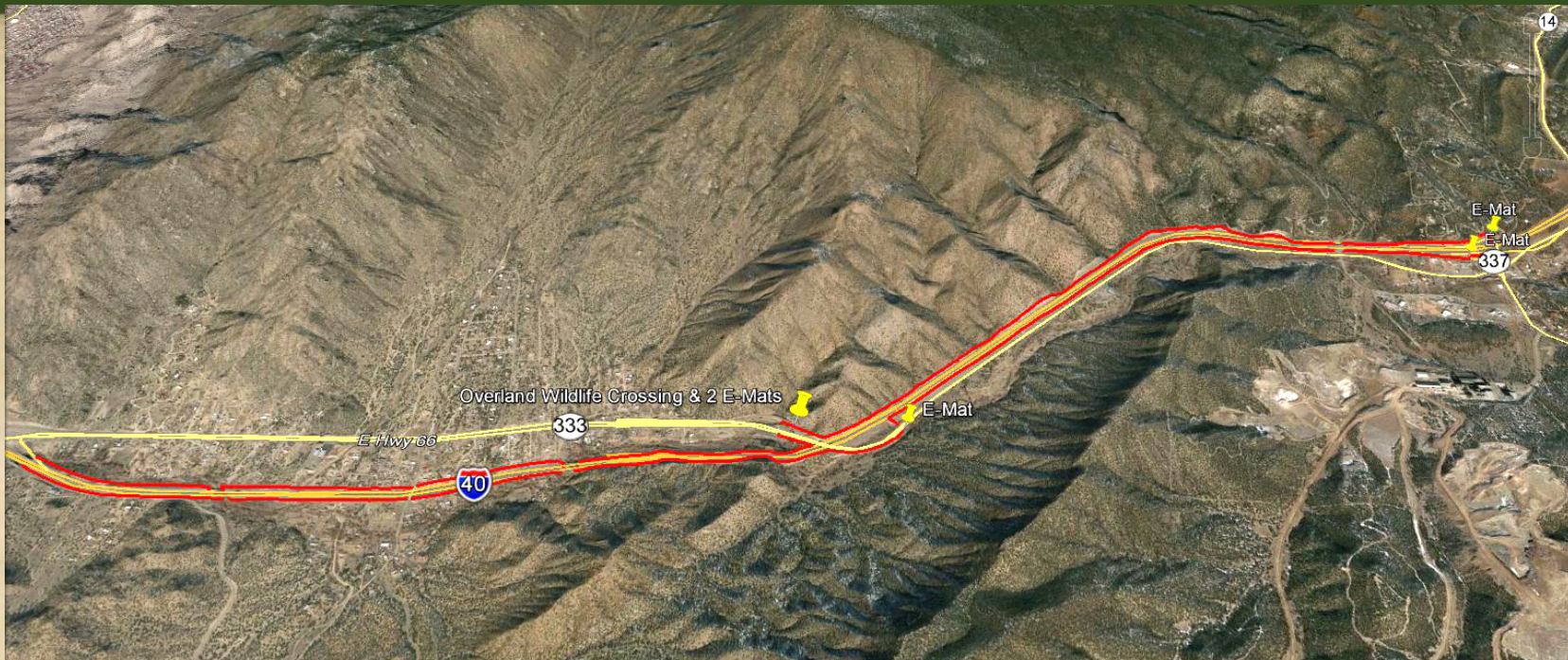
← BEFORE



AFTER →



House Joint Memorial 3 and Tijeras Canyon Safe Passage Project



3 underpasses with 2 years of track monitoring.
All underpasses used by mule deer.

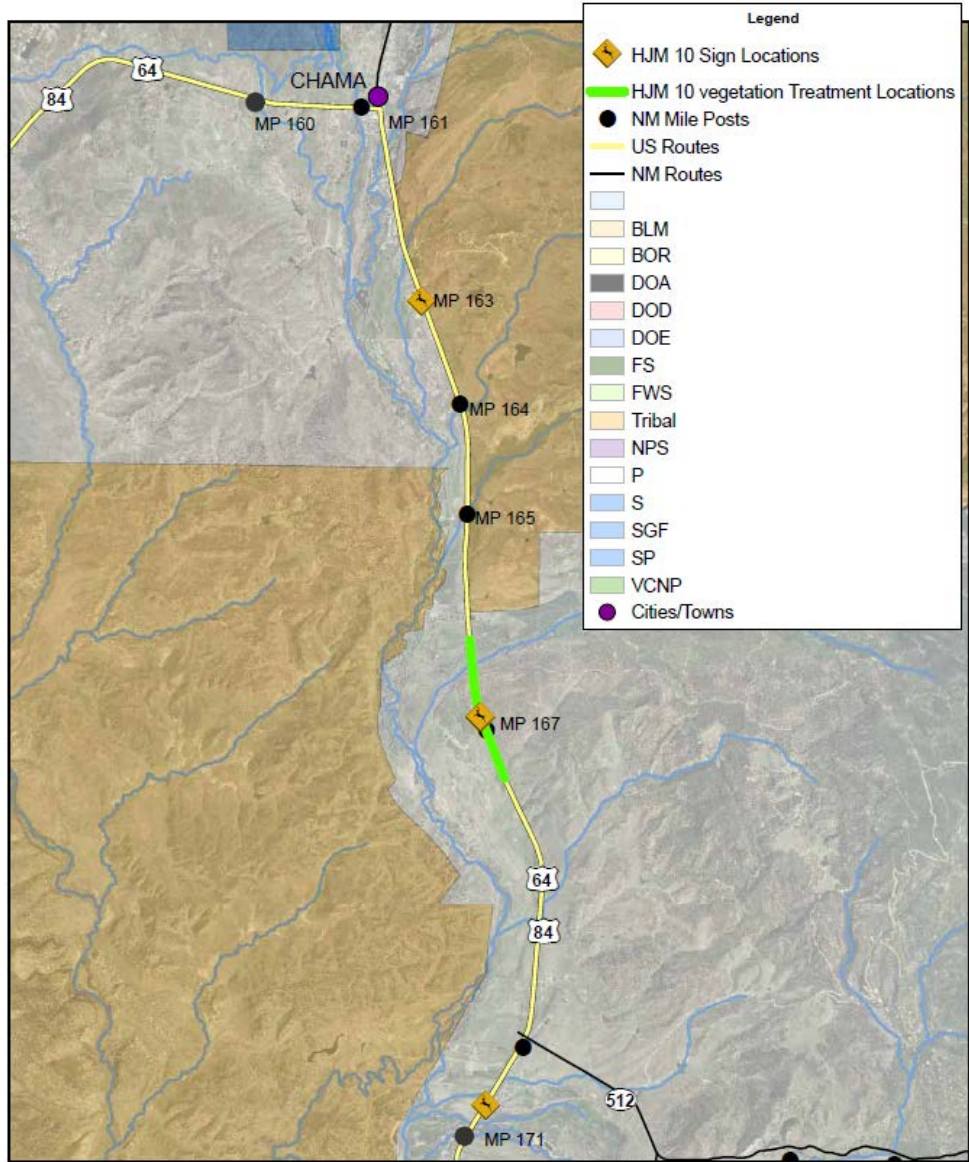
U.S. 64 Monero to Lumberton (west of Chama)



Construction and Maintenance Challenges




2011 HJM 10 Wildlife Safety Zone U.S. 64/84



Top Five Road Segments	Collisions 2006-2010
I-25 Raton Pass	83
U.S. 70 Ruidoso Downs-Hondo	77
U.S. 50 Cuba to NM Hwy 537	73
U.S. 64 Tierra Amarilla-Chama	60
U.S. 70 Tularosa to Bent	56



NM State Police Survey
Identified 150 locations


**The Legislature
of the
State of New Mexico**
FIFTY-FIRST LEGISLATURE
FIRST SESSION, 2013
SENATE MEMORIAL 11
INTRODUCED BY
SENATOR HOWIE C. MORALES
*A MEMORIAL
REQUESTING THAT THE DEPARTMENT OF TRANSPORTATION AND
THE DEPARTMENT OF GAME AND FISH HOLD A WORKSHOP
TO IDENTIFY FUTURE PROJECTS AND FUNDING
TO HELP REDUCE WILDLIFE-VEHICLE COLLISIONS;
REQUESTING THAT THE GOVERNOR DECLARE
A WILDLIFE SAFETY AWARENESS DAY*
*WHEREAS, in 2011, the New Mexico Legislature passed House Joint
Memorial 10, which requested that the Department of Transportation, the
Department of Game and Fish and New Mexico State Police work together to
create a traffic safety pilot project to reduce wildlife-vehicle collisions; and*
*WHEREAS, the pilot project, which includes tree and shrub trimming
and the installation of traffic signs and flashing lights, is underway on
United States Route 64 near Chama, New Mexico; and*
*WHEREAS, roads, such as United States Route 64, often run through
areas that wildlife has used for thousands of years, and the competition for
space poses a significant problem for wildlife on the move, especially large
animals such as deer, elk, bear, pronghorn antelope and mountain lions; and*
*WHEREAS, wildlife safety zones that incorporate measures such as
reduced speed limits, trimmed vegetation, flashing traffic lights, traffic signs
and increased fines for traffic violations, can increase driver awareness and
help protect humans and wildlife from unnecessary and brutal injury or death;
and*
*WHEREAS, reducing wildlife-vehicle collisions will, in turn, reduce the
number of collision-related deaths and injuries sustained by people and wildlife,
the number of valuable State game animals lost to collisions and the cost of
collision-related medical care, vehicle repair and insurance; and*
*WHEREAS, in Colorado, Idaho, Florida, California, Pennsylvania,
Washington and Arizona, wildlife safety zones have proven to reduce collisions
and save the lives of people and wildlife; and*

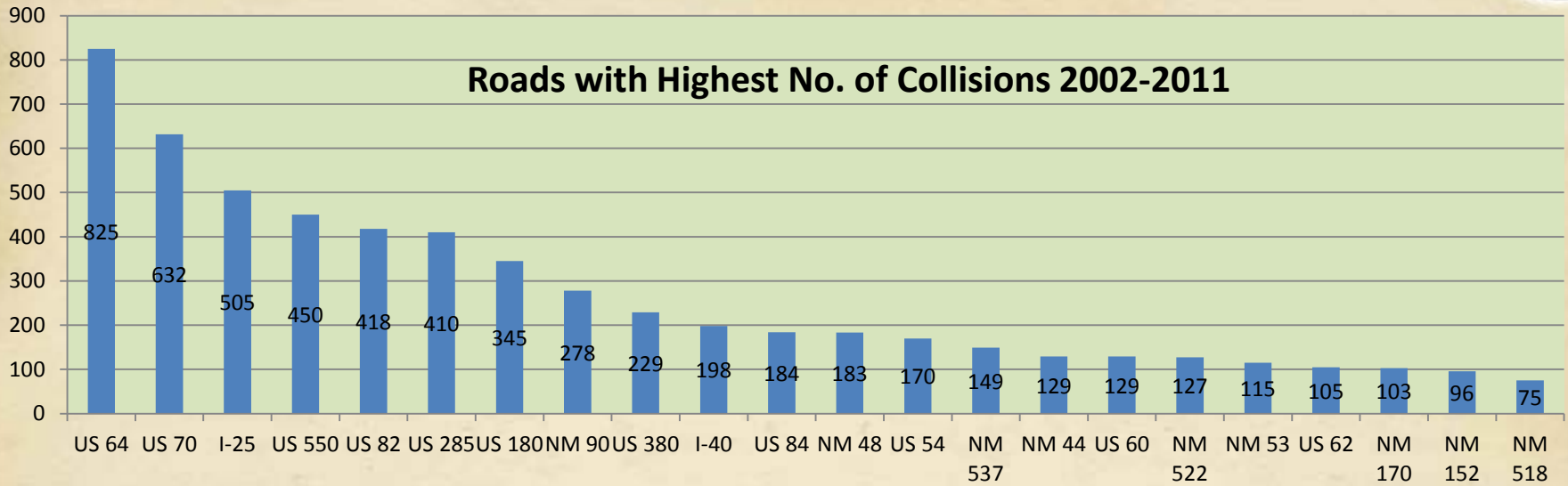


May workshop identified 38 highway segments

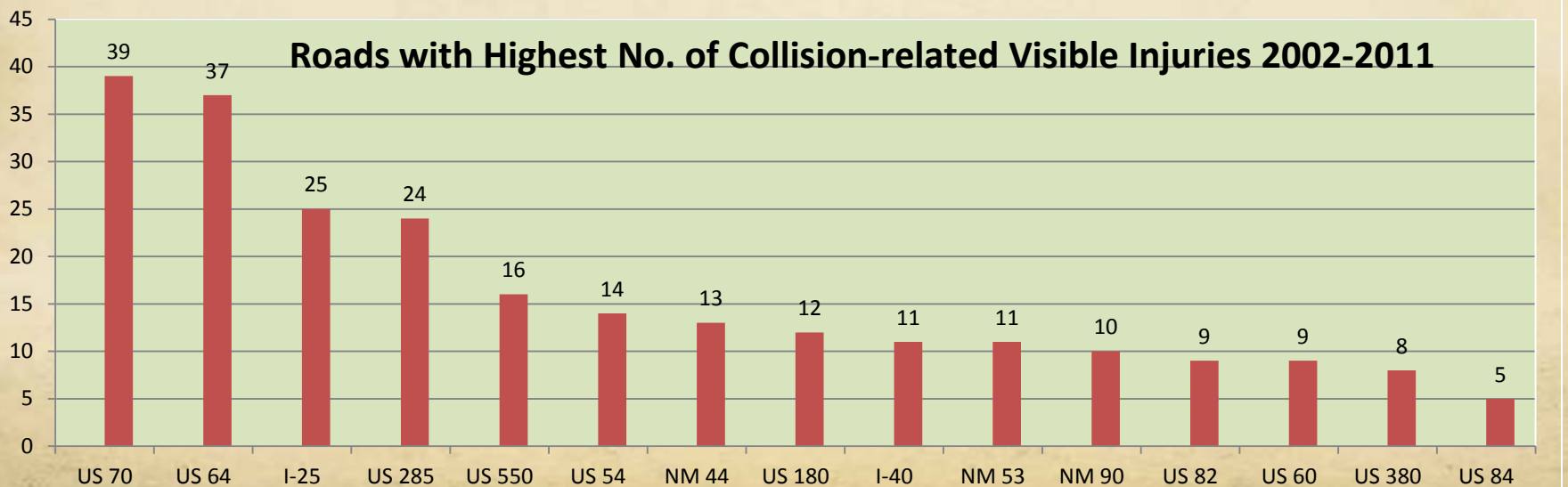
Senate Memorial 11 / House Memorial 1



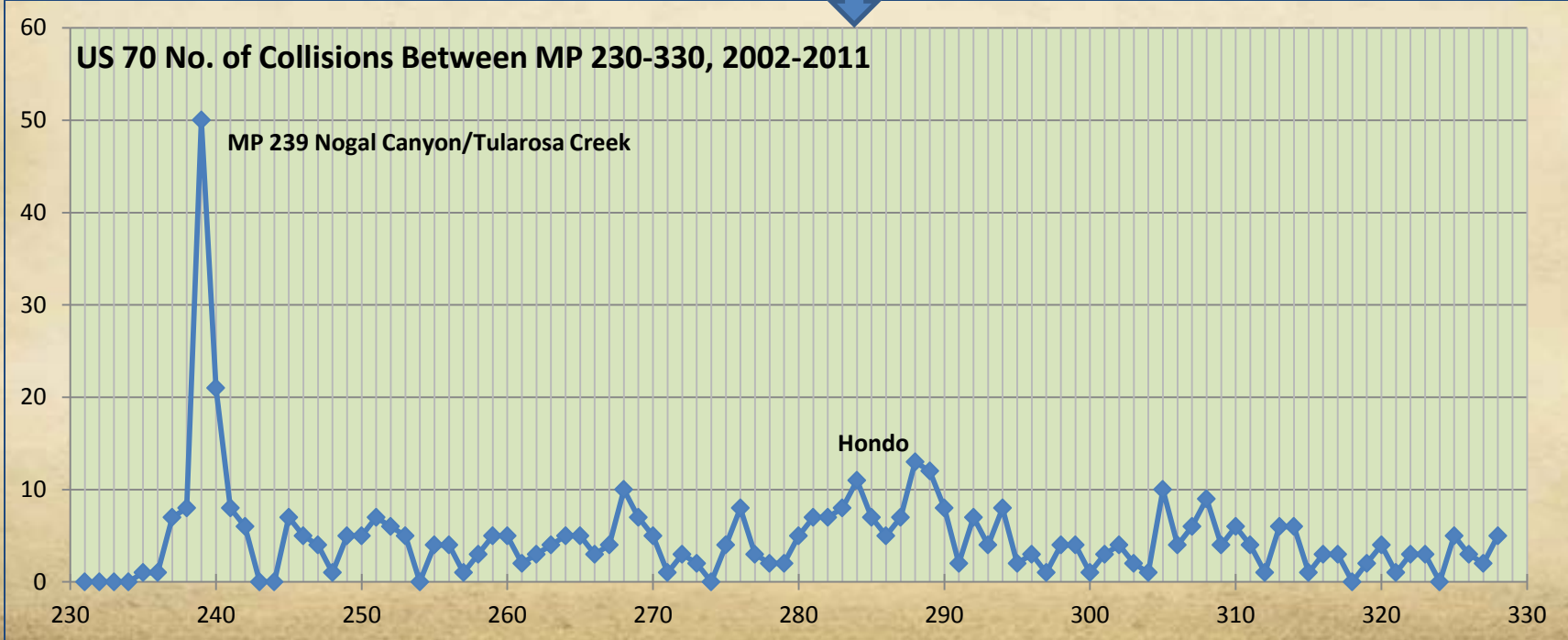
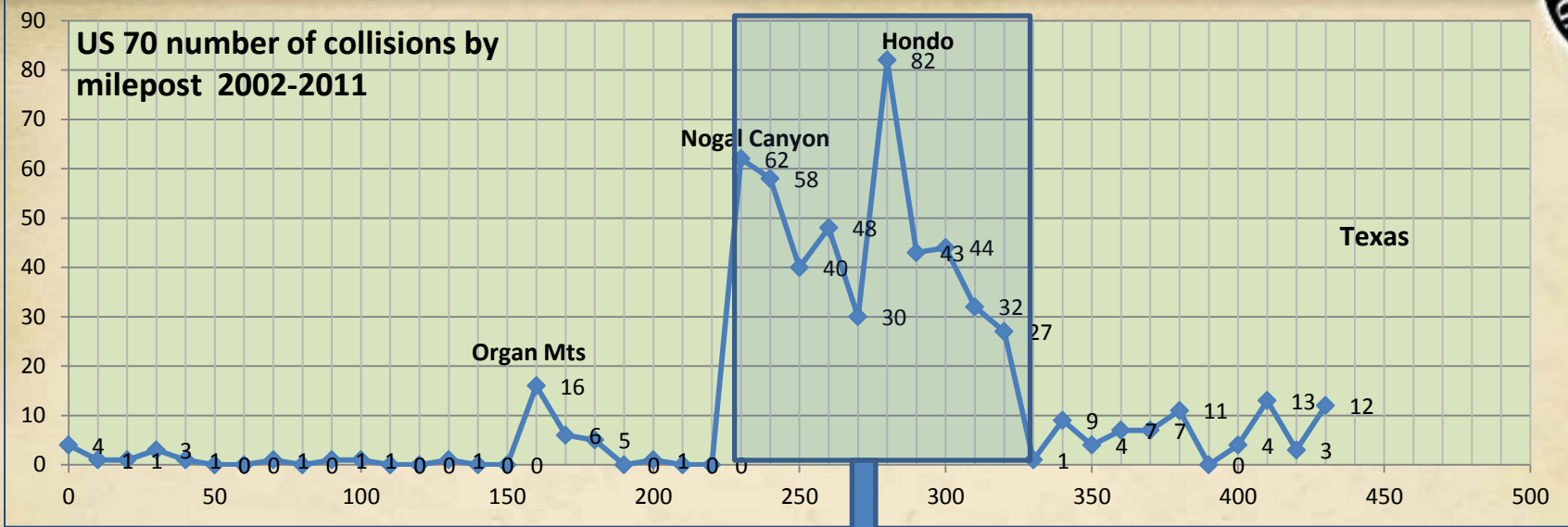
Roads with Highest No. of Collisions 2002-2011



Roads with Highest No. of Collision-related Visible Injuries 2002-2011



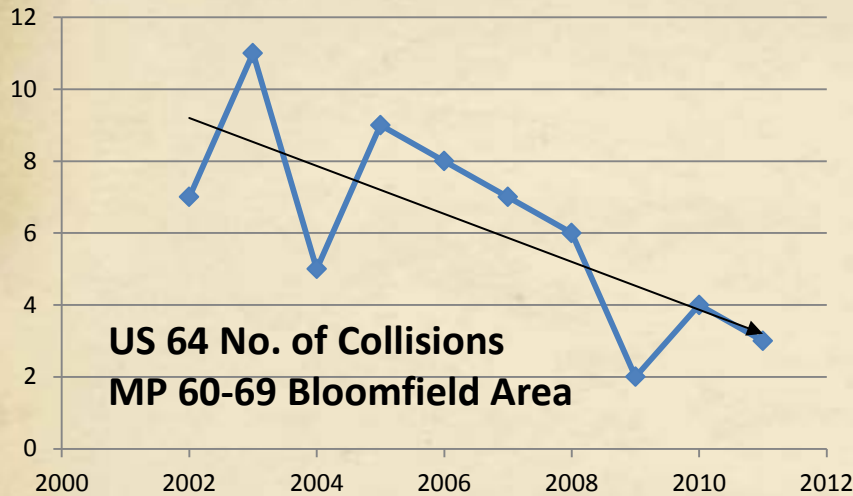
Senate Memorial 11 / House Memorial 1



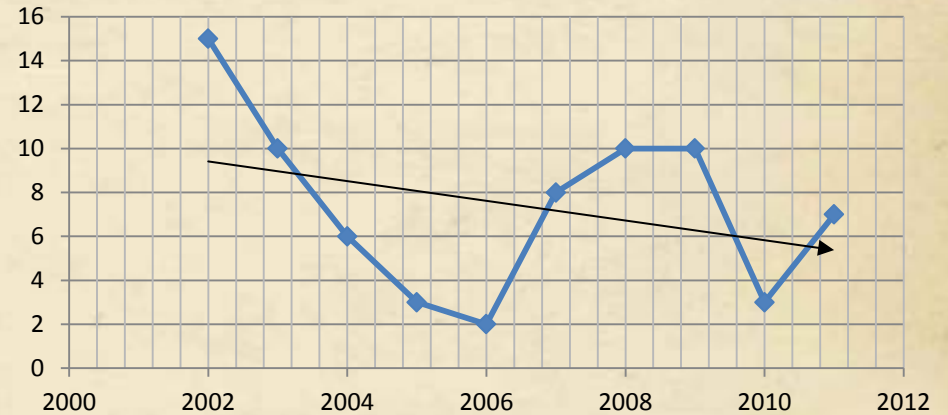
Senate Memorial 11 / House Memorial 1



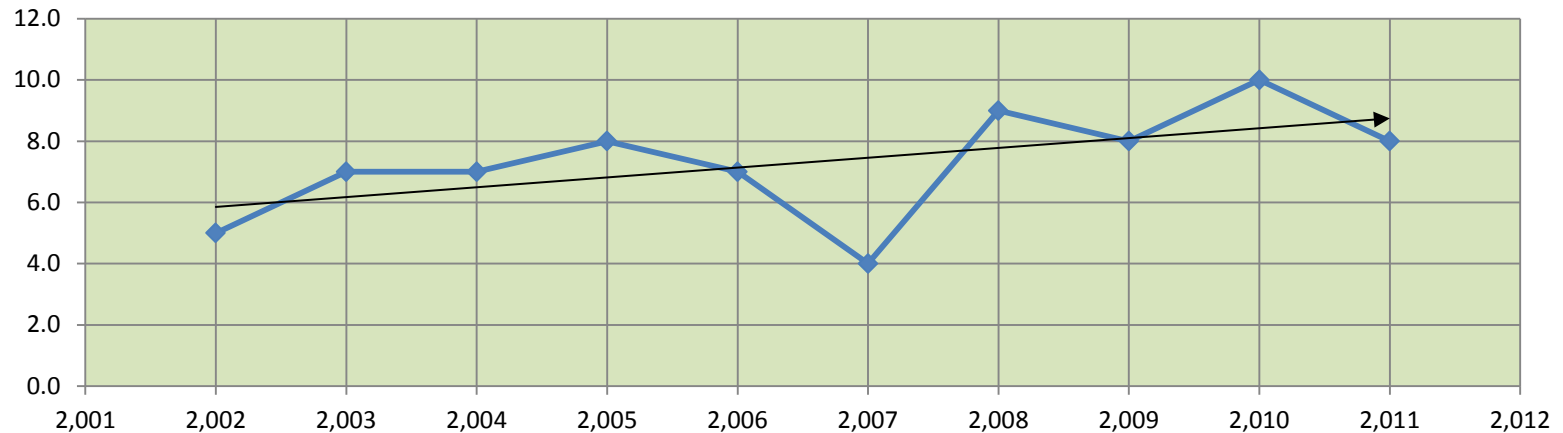
10-Year Trends



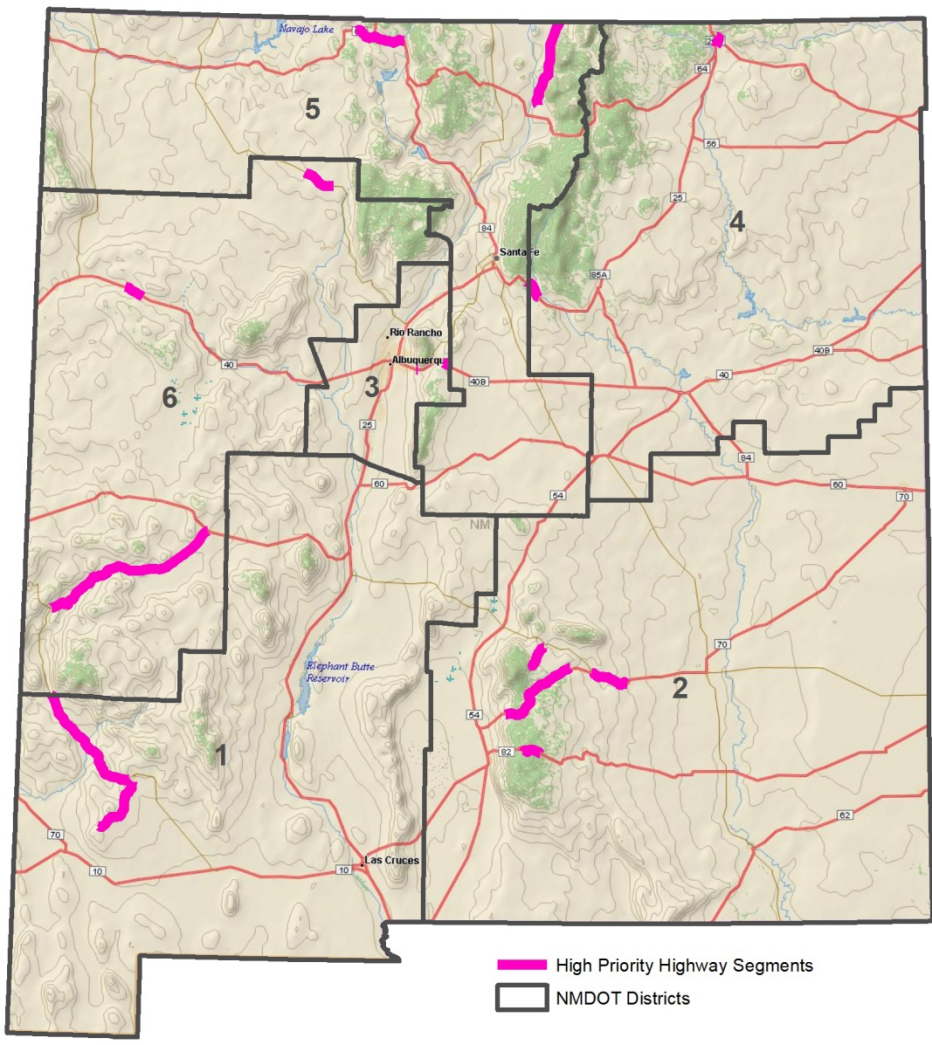
**US 180 No. of Collisions MP 116-119
East of Silver City**



**US 70 No. of Collisions MP 239-240
Nogal Canyon Tularosa Creek Area**



Senate Memorial 11 / House Memorial 1



15 Highways Evaluating for	HSIP Funding Proposal 2013
NM 90 Silver City-Lordsburg	U.S. 180 south of Cliff
U.S. 70 Tularosa to Bent	US 70 Ruidoso Downs-Hondo
U.S. 82 Cloudcroft	NM 48 Ruidoso to Capitan
I-40/NM 333 Tijeras Canyon (unfenced portion)	I-40 Zuzax to SR 306
I-25 Raton Pass	I-25 Glorieta
US 64 Chama to 64/84 junct.	NM 522 Arroyo Hondo to CO
I-40 Thoreau	U.S. 550 Cuba to NM 537
NM 12 Apache Creek	



$$\text{Openness Factor} = (H) \times (W) / (L)$$



Acknowledgements

Thanks to Coleman Burnett, Chris Cudia and all of the NMDOT Environmental Bureau staff involved in implementing Senate Memorial 11

