



Bighorn Sheep Management Update

May 23, 2013

New Mexico State Game Commission Meeting

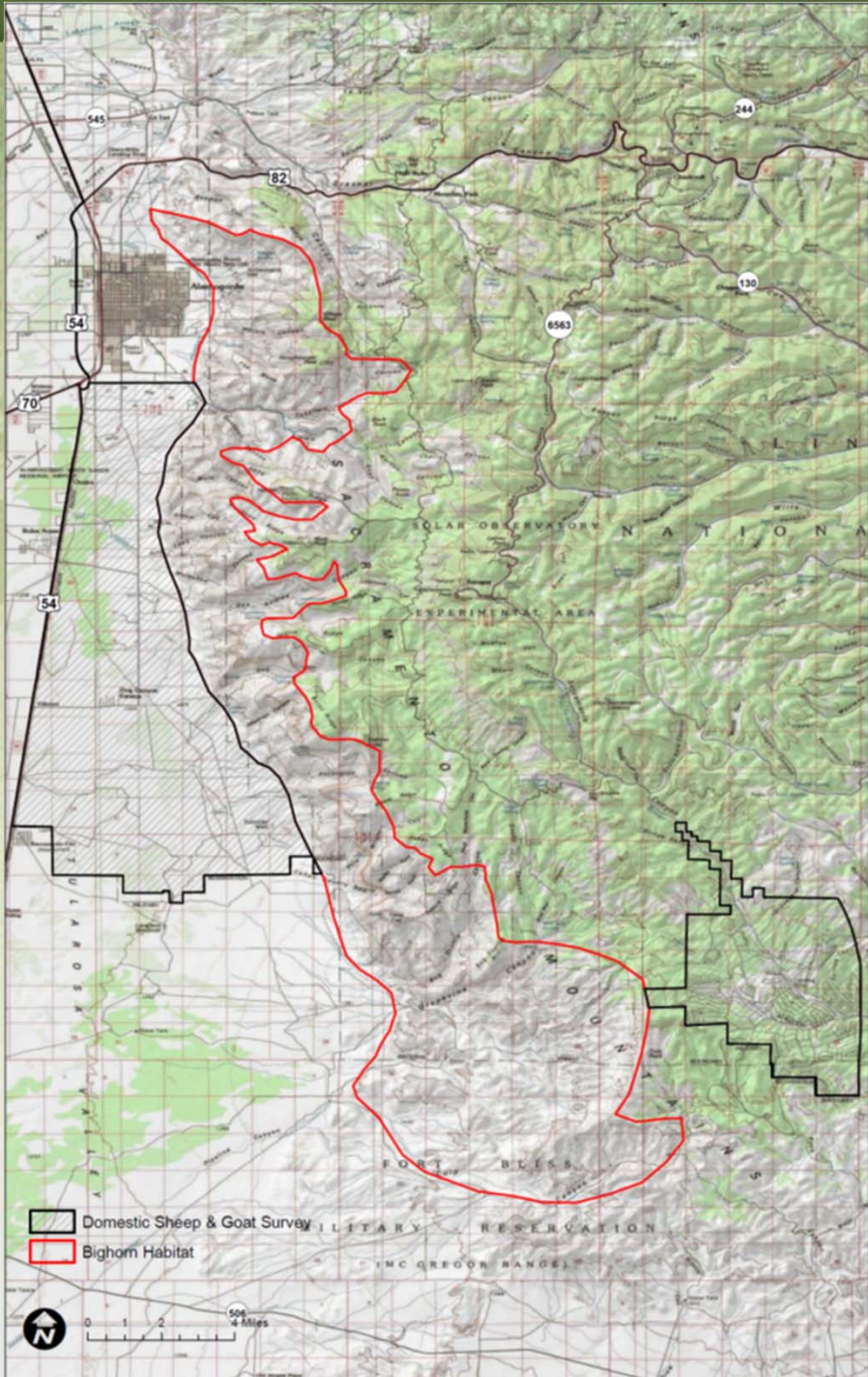
Roswell, NM

Management Highlights

- Removed from the State Threatened List 2011
- Fall 2011 to Fall 2012 – Population increase from approximately 660 - 750
- Fall 2012 trap and transplant of wild Desert BHS to another wild herd
- Conducting two research studies

Path Forward

- Evaluation of habitat in NM for reintroduction of native wildlife to include bighorn sheep
- Plans for reintroduction of BHS into the Sacramento Mountain range
- Last reintroduction occurred in 1995
- Meeting scheduled with USFS regarding compliance with NEPA and other regulations
- Meet with public to include ranchers who graze cattle in the area
- Can begin as soon as fall 2014



Proposed Release Site

Wildlife Management Division

Cost

- Provide for over the counter barbary sheep license. West of the sunspot highway
- Prerelease reduction in barbary sheep
- Prerelease, aggressive, predator control program in the release area



Questions?