

River Otter Reintroduction Update



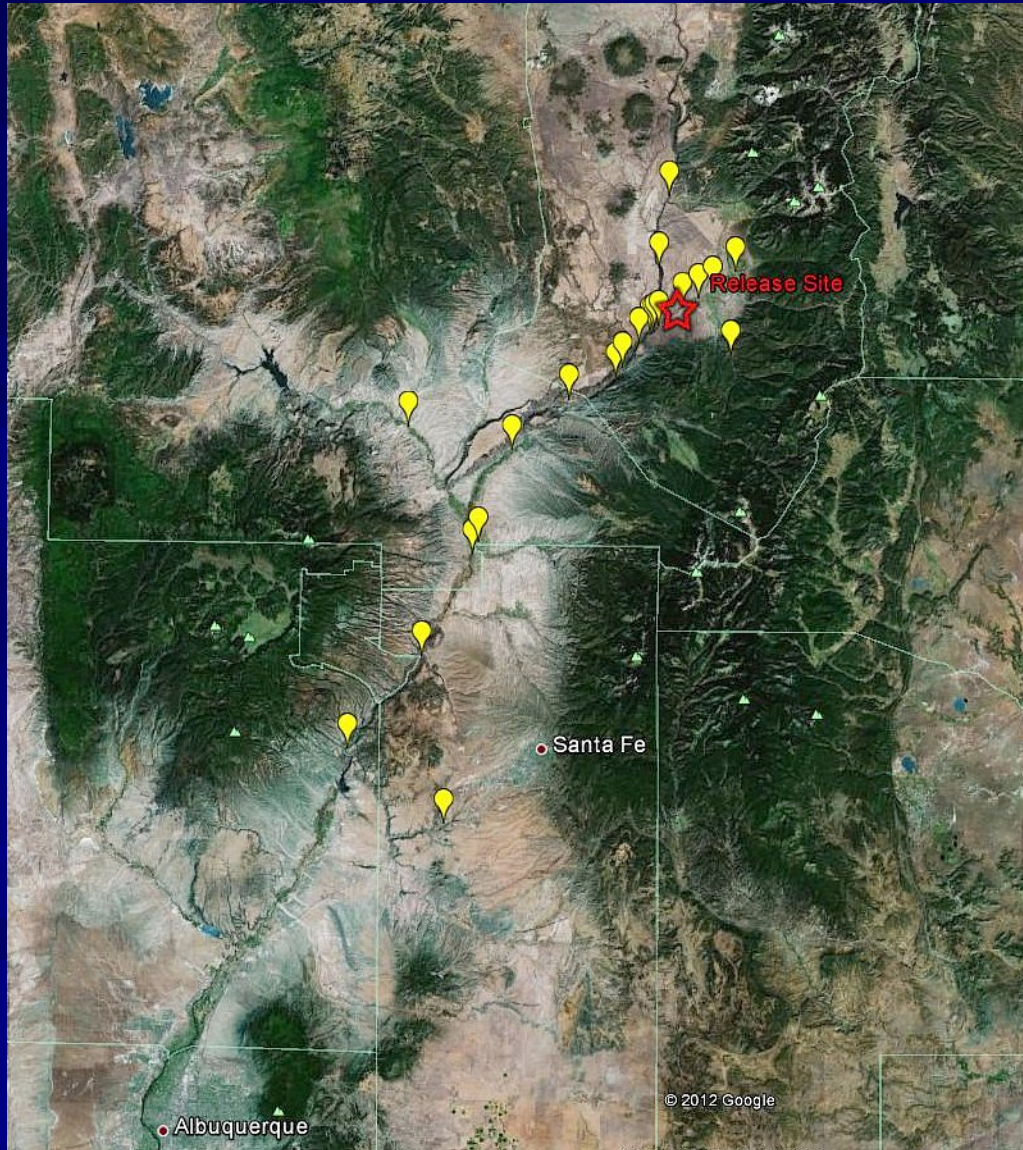
James N. Stuart
Conservation Services Division
New Mexico Department of Game & Fish

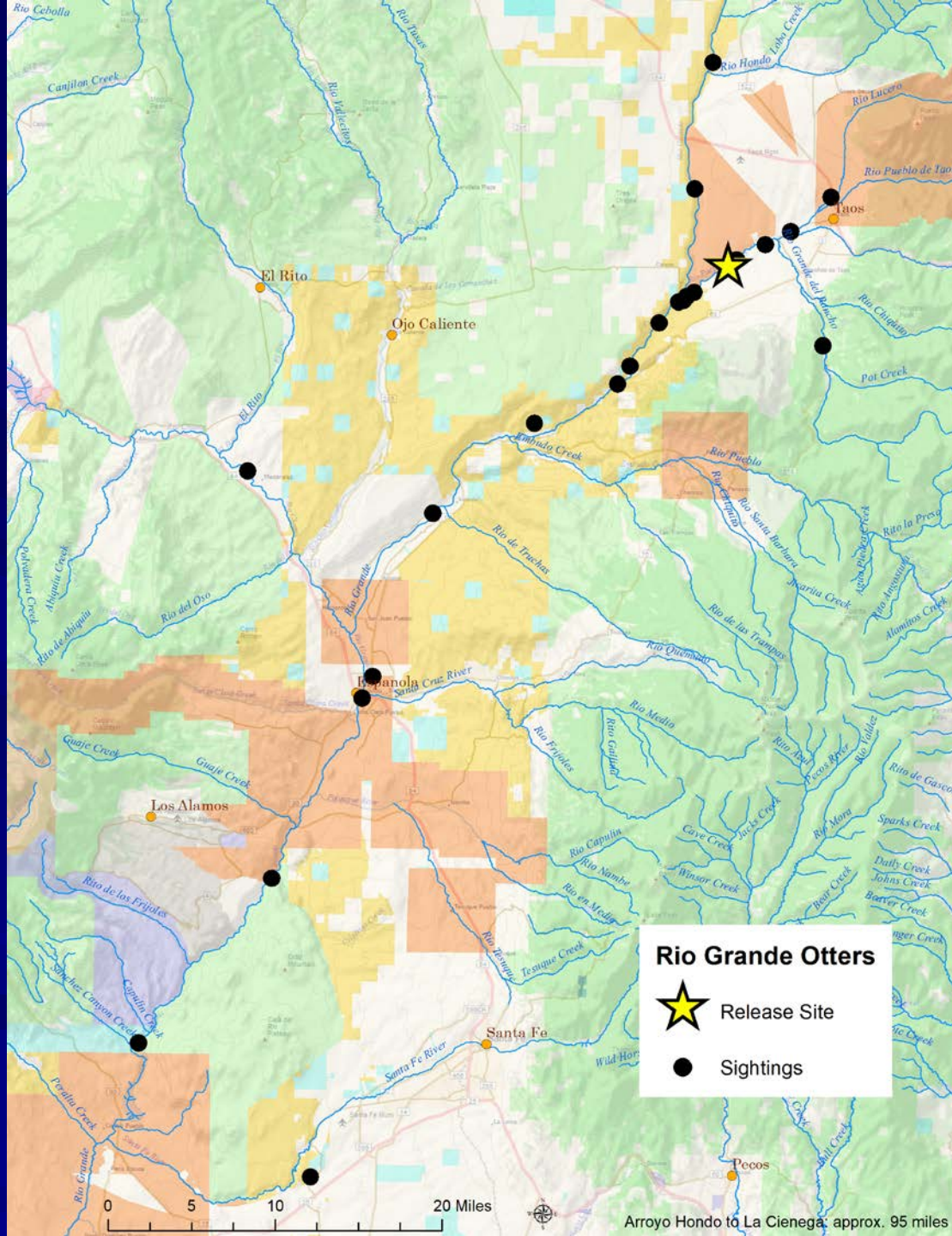
Game Commission Mtg, Hobbs – 23 February 2012

Major Steps in Otter Restoration

- **2004**: State Game Commission approved Feasibility Study process. NMGF worked with NM Friends of River Otter in developing FS
- **2006**: SGC accepted Feasibility Study and directed NMGF to proceed with reintro in Upper Rio Grande and added the Gila River Basin also.
- **2008-2010**: 33 River Otters from Washington State released at Taos Pueblo near Rio Grande, completing Rio Grande Phase
- **2009-2011**: Planning for Gila River Phase including formal consultation with USFWS for T&E species

Dispersal of Otters in Rio Grande









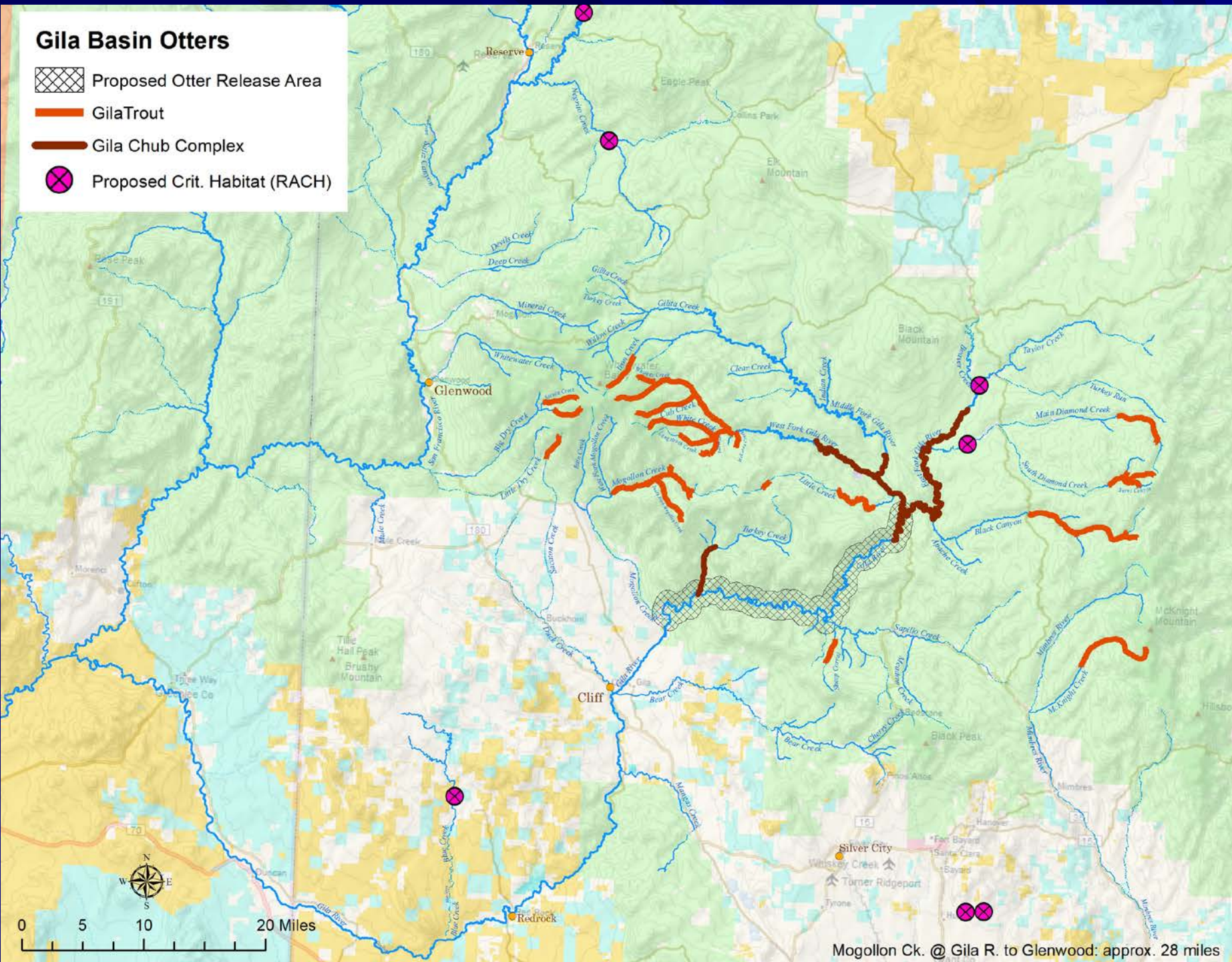
Aquatic Species in Gila Basin Federal Endangered, Threatened or Candidate

- Chiricahua Leopard Frog – Threatened
- Gila Trout -- Threatened
- Gila Chub – Endangered
- Headwater Chub – Candidate
- Roundtail Chub – Candidate

Other T&E species unlikely to be affected by otter:
Loach Minnow, Gila Topminnow, Spikedace, etc.

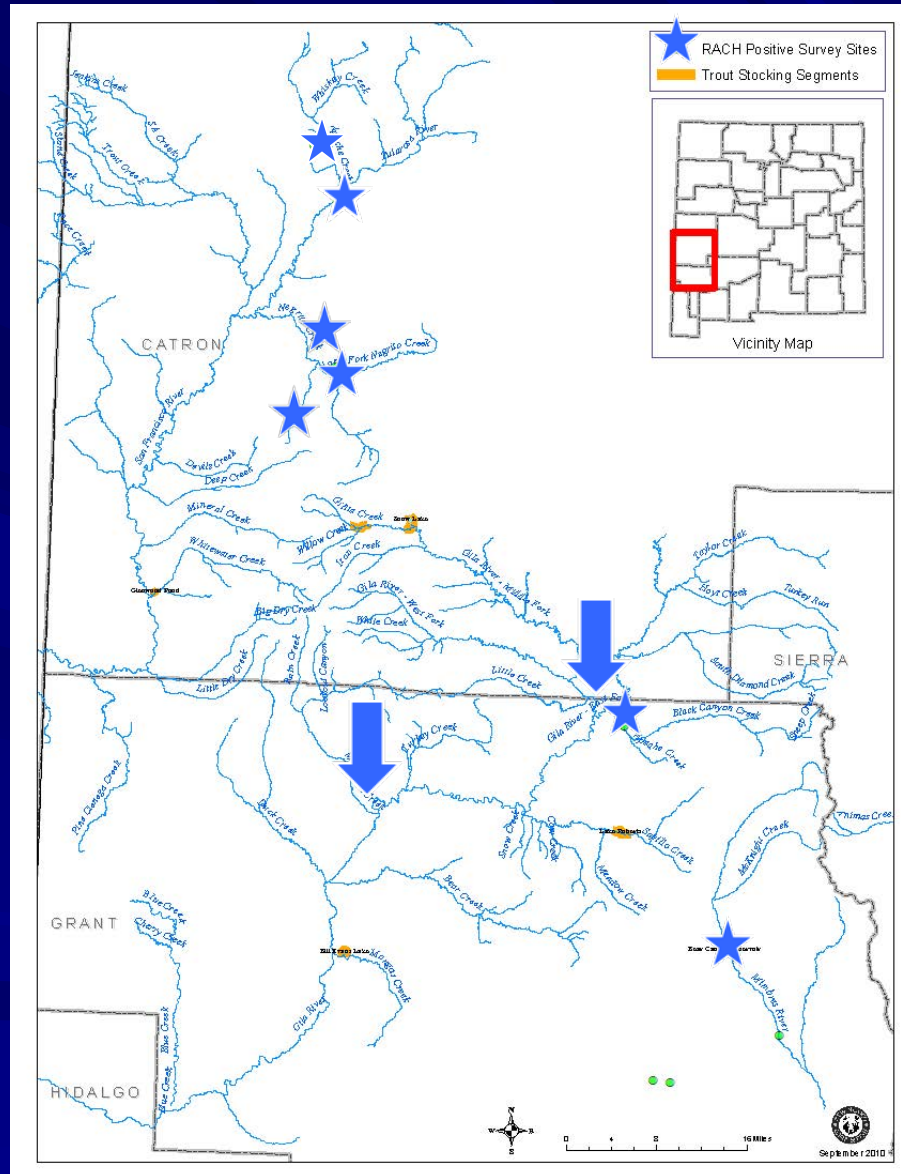
Gila Basin Otters

-  Proposed Otter Release Area
-  Gila Trout
-  Gila Chub Complex
-  Proposed Crit. Habitat (RACH)

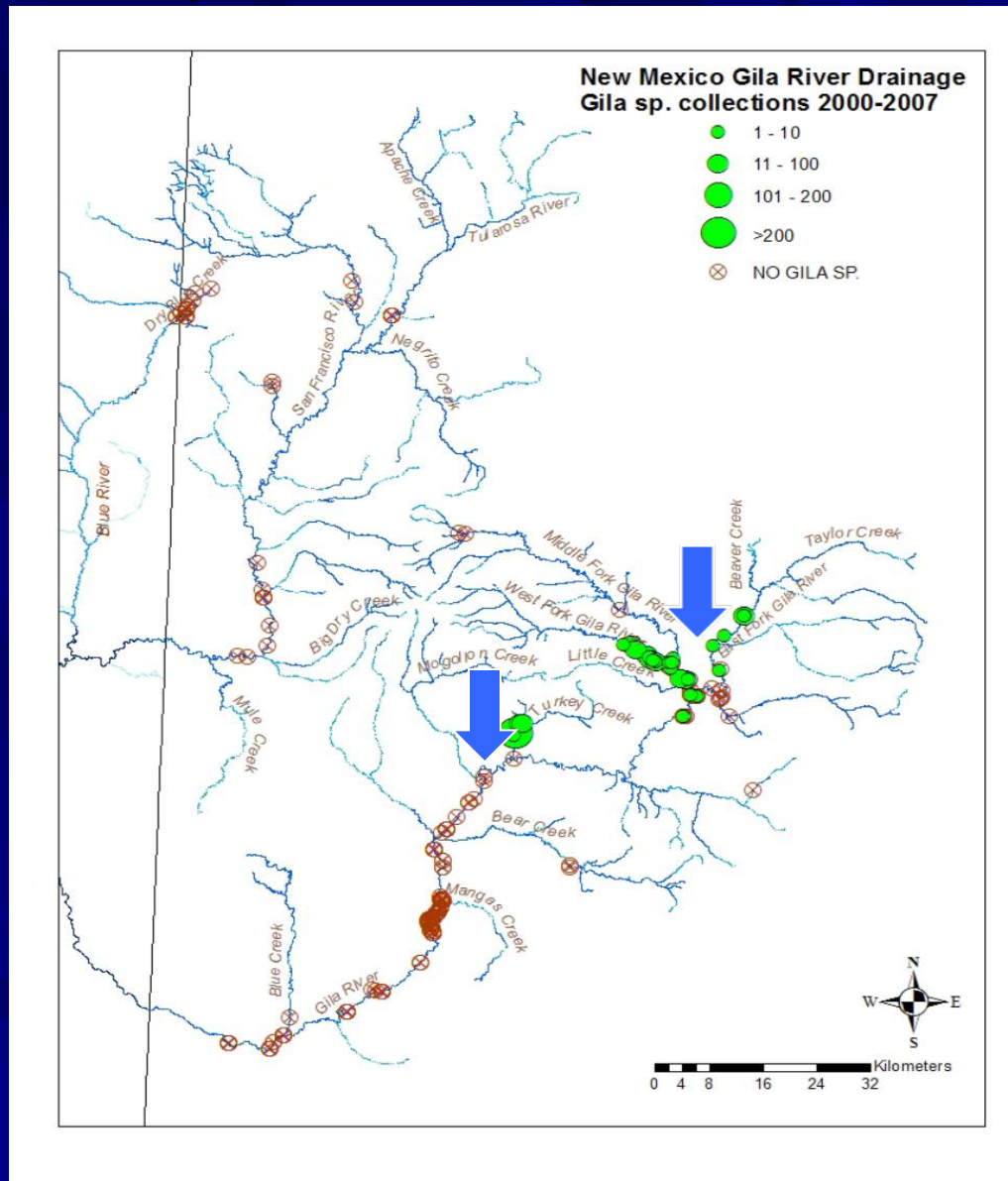


Mogollon Ck. @ Gila R. to Glenwood: approx. 28 miles

Chiricahua Leopard Frog in Gila Basin



Chub Species Complex in Gila Basin



Primary Concerns

- Possible predation impact on Gila Trout, Chub species, Leopard Frog
- Need for long-term monitoring of otters (radio-telemetry on all)
- Removal/Relocation of “problem” otters
- Otter dispersal likely throughout the basin
- NMGF resources to conduct monitoring and possible removals (live trapping)

Summary

- NMGF is working toward de-listing of Gila Trout via restoration
- Leopard Frog and Chub species require conservation efforts to prevent extirpation
- Proceeding with Otter releases in Gila basin may jeopardize actions to secure these listed species