

HABITAT STAMP PROGRAM FUND DISTRIBUTION

by R.J Kirkpatrick
February 2012

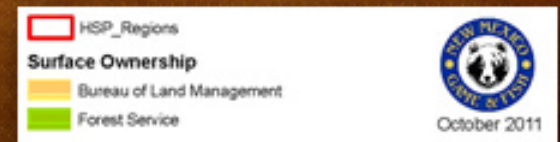
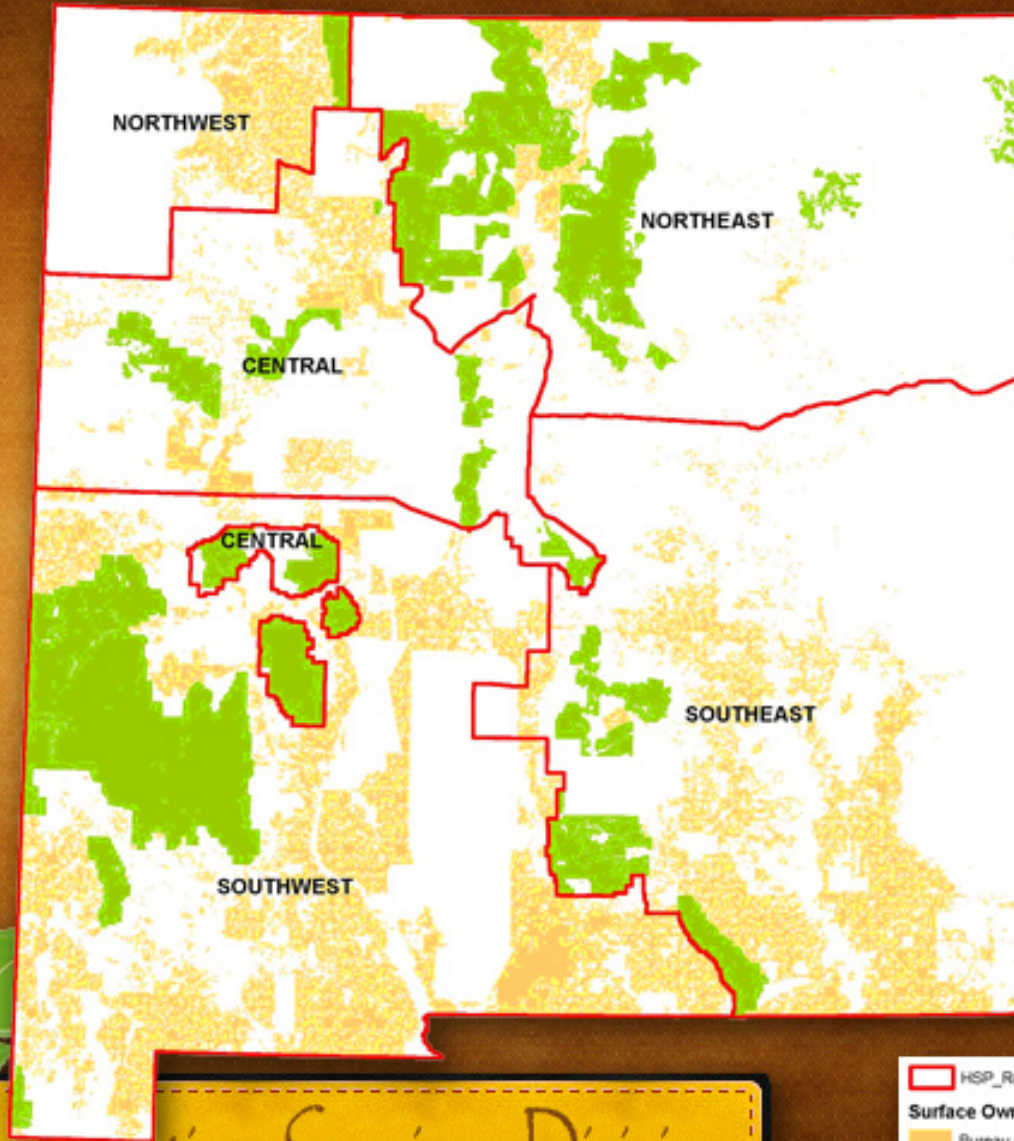


Conservation Services Division



Current Regions

Current
HSP
regional
boundaries



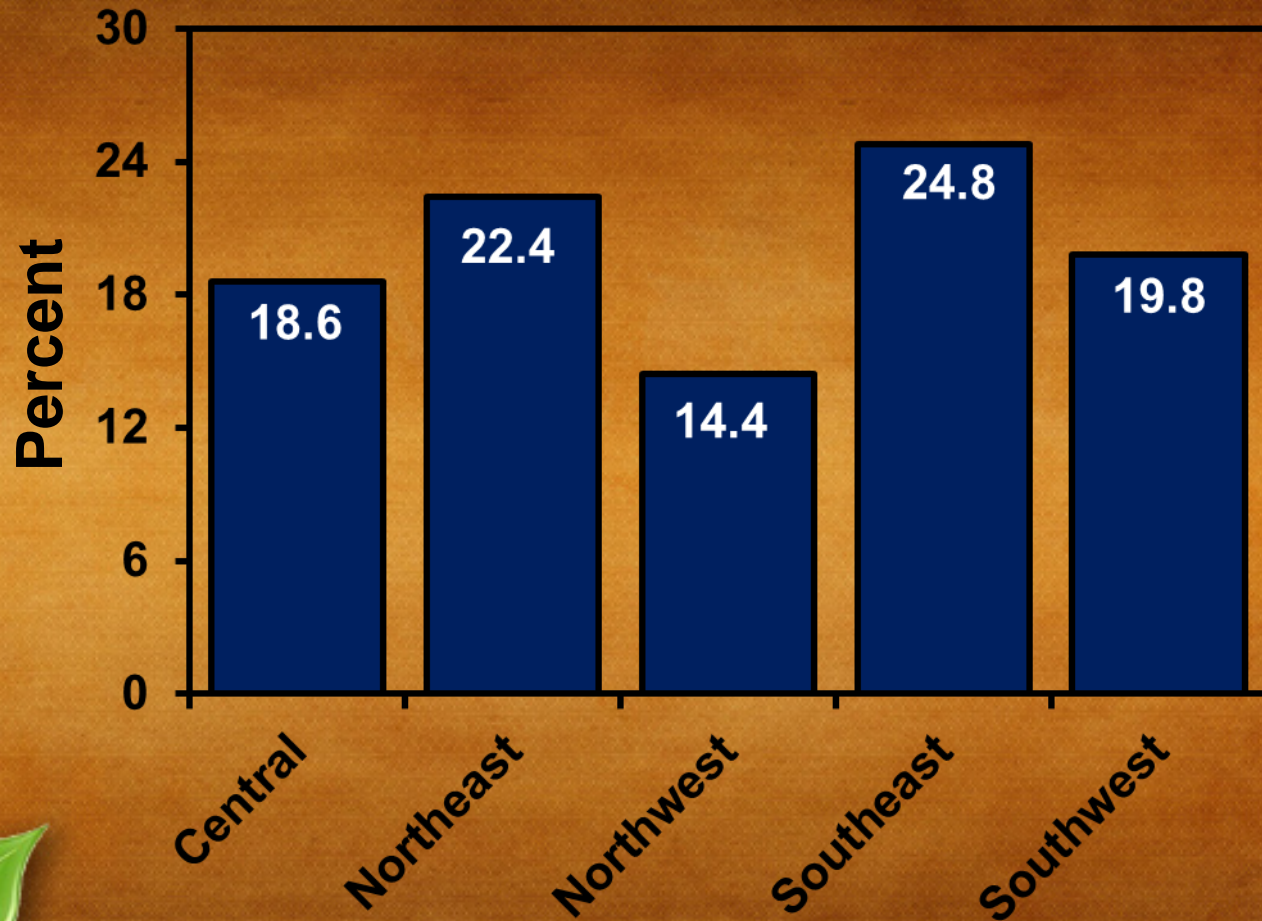
Conservation Services Division



October 2011

Current formula

Percentage of HSP funds distributed to CAC regions, 1991-present



Conservation Services Division

Proposal

Concerns
identified
and
addressed

1. Respects regional citizen participation in HSP.
2. Distributes funds based on percent of FS & BLM lands in each of five regions.
3. Injects some competition.
4. Ensures BLM dedicated funding to aid them in establishing budgets, matching funds, and workforce planning.
5. Provides a mechanism to fund larger-scale, high priority projects.



Conservation Services Division



Housekeeping

1.3 million
acres of
Socorro BLM
administrative
unit moved
from SW to
Central region



Conservation Services Division

Base Allocation

Assumes an
\$800,000
budget

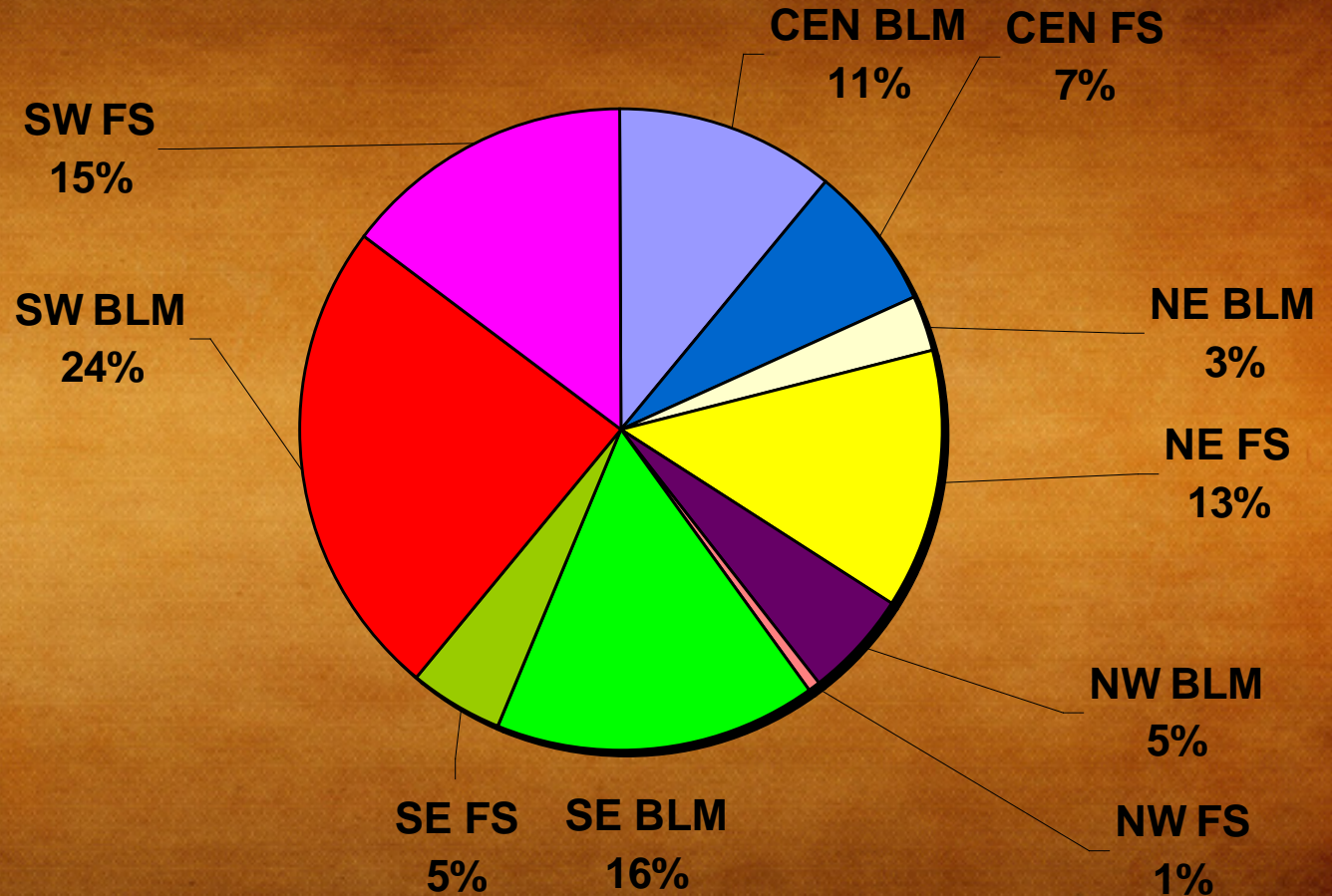
- 1/2 budget set aside as “base funds”
- Divides *base funds* equally to regions (10% to each region).
- Within region, then divides *base funds* to agencies by land mass.
- Agencies do not need to compete for base funding.
- Base allocation can be used to maintain existing HSP projects and to fund agency priority projects.



Conservation Services Division

Agency Land Mass

Percentage of land mass by agency within state



Conservation Services Division

Land Mass Allocation

Assumes an
\$800,000
budget

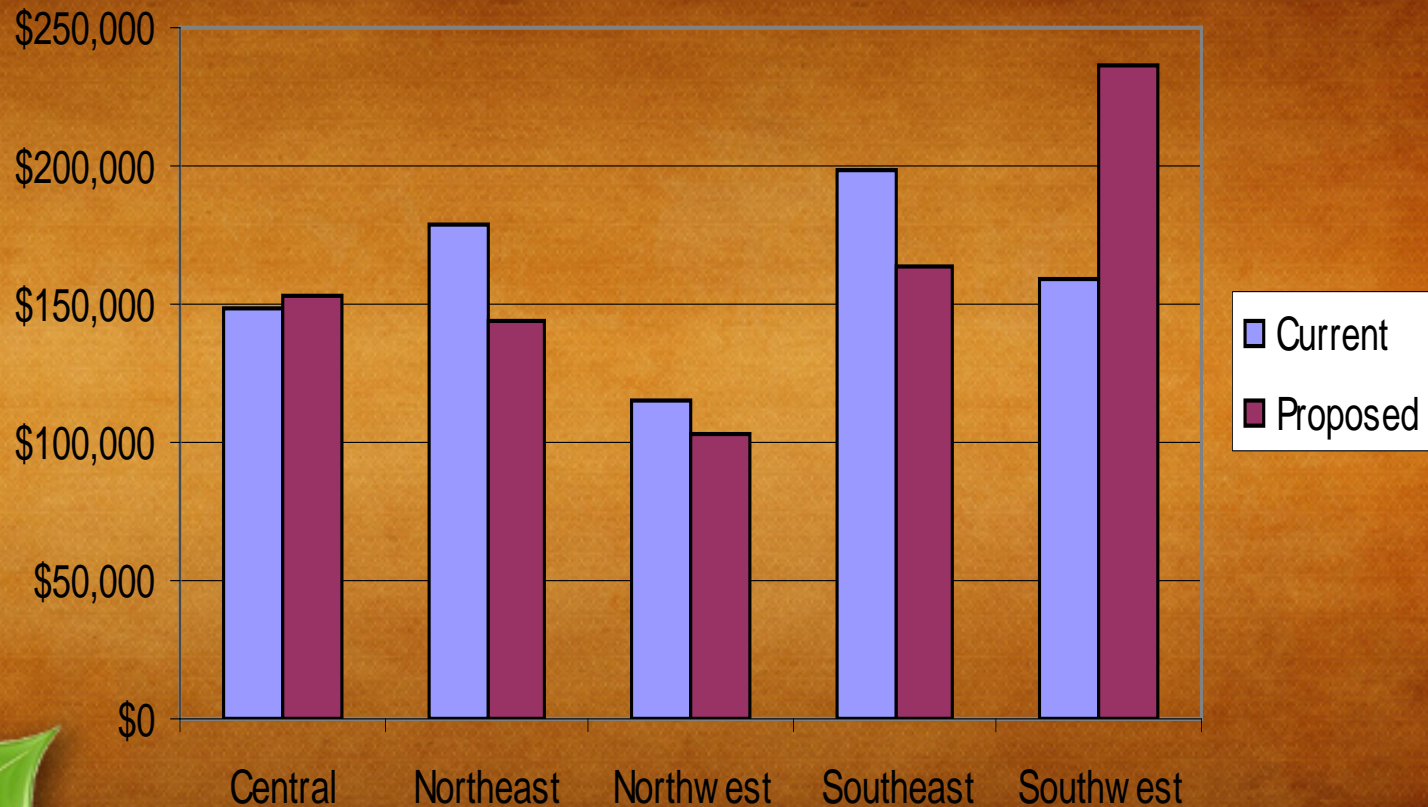
- 1/2 budget set aside as “land mass” funds.
- Distributes *land mass funds* to regions based upon their percent of land mass within the state.
- Within region, then *land mass funds* distributed on project by project basis through competition as ranked by citizens.



Conservation Services Division

Results

Comparison of current and proposed regional allocation w/ an \$800,000 budget



Conservation Services Division

Larger, Priority Projects

**Aquatic
Fisheries**

Deer

**Other
targeted
needs**

- **Unused funds from annual budget (currently 87% used by BLM & 79% by FS)**
- **Seeks those agency units that match funds and have good track record**
- **Leveraged with other state and federal funds**
- **BAR funds for surplus fund balance**
- **Explore multi-year agreements between G&F and federal agencies**



Conservation Services Division

Questions or Direction



Conservation Services Division



Conservation Services Division